



OEM R4060 Multi function Gateway User Manual

[Home](#) » [OEM](#) » OEM R4060 Multi function Gateway User Manual 

Contents

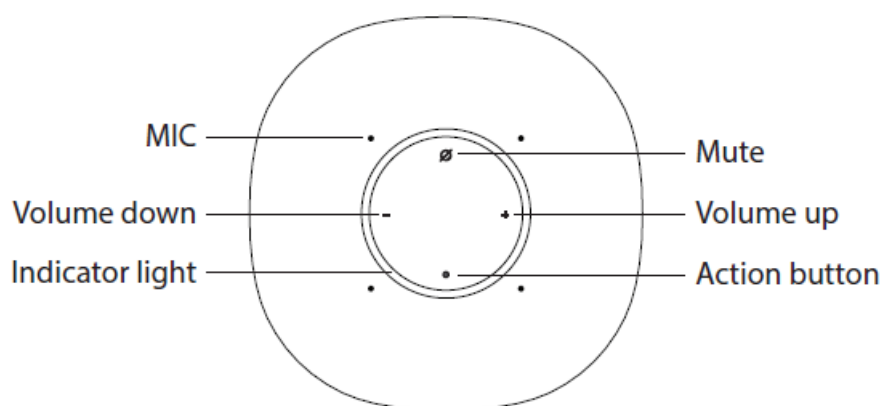
- [1 OEM R4060 Multi function Gateway](#)
- [2 Package includes](#)
- [3 Introduction](#)
- [4 Function description](#)
- [5 Technical data](#)
- [6 Documents / Resources](#)
- [7 Related Posts](#)



OEM R4060 Multi function Gateway

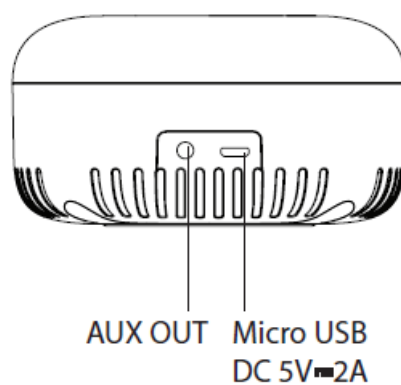


TOP



Note: the volume up/down button is only for adjusting Alexa sound.

Rear



Package includes

- Multifunction Gateway x 1
- USB cable x 1
- User manual x 1

- Power Adatper x 1
- IR Remote control x 1
- AAA battery x 2

Introduction

The R4060 is a new generation, powerful, multifunction, smart home gateway. It features Alexa-built in, Zigbee gateway, Smart IR, Siren, Bluetooth speaker.

Requirement to use

- WOOX Security app
- WLAN-enabled router: 2.4GHz (Separate band)

Set up the multifunction gateway with WOOX Security App

- Download and install the app “WOOX Security” from Apple App Store or Google Play Store on your smartphone.
 - Open Bluetooth on the smartphone.
 - Enable Bluetooth and location permission for the WOOX Security app, so that the app can find the gateway via Bluetooth.
 - Launch the app “WOOX Security”.
 - Create a new account or log in to your existing account.
 - Power on the gateway and ensure that its indicator light is quick flashing in orange. If the indicator light isn't flashing: hold and press the action button for 5 seconds until the indicator light starts to flash.
 - Tap “+” to add the device.
 - The gateway will appear on the app. If the gateway does not appear, please check if the Bluetooth and location permission of the WOOX Security app is enabled in smartphone settings.
 - Select the gateway and continue.
 - Confirm the Wi-Fi network and password.
- Note:** only 2.4GHz WiFi is supported.
- The app will now search for the device and register is to your account.
 - Enter the device name.

Note: The device name will also be used by Amazon Alexa and Google Home.

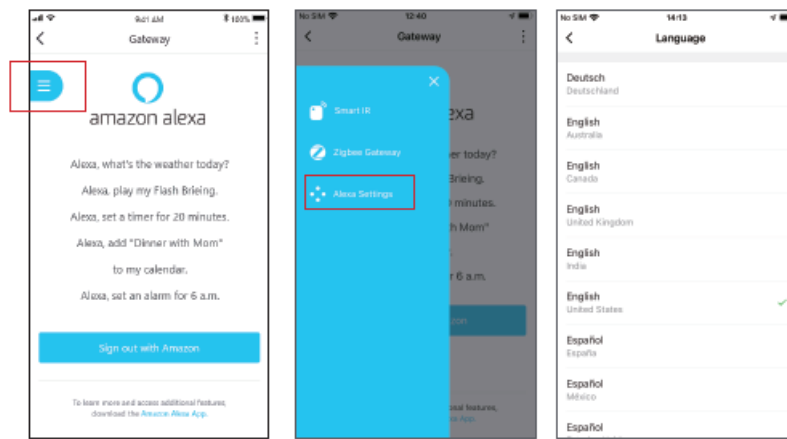
Function description

Alexa built-in

Function: Alexa built-in devices let you instantly connect to Alexa to play music, control your smart home, get information, news, weather, and more using just your voice. e.g.: you can say “Alexa, arm the gateway in home mode”.

How to control smart home device: To voice control smart home device that connected to gateway, you will need to link WOOX Security app account to Alexa. After login Alexa in app, it will check if your account is linked, if not, it will ask you to complete link process.

Change Alexa language: you can change the Alexa language in the left menu as below:

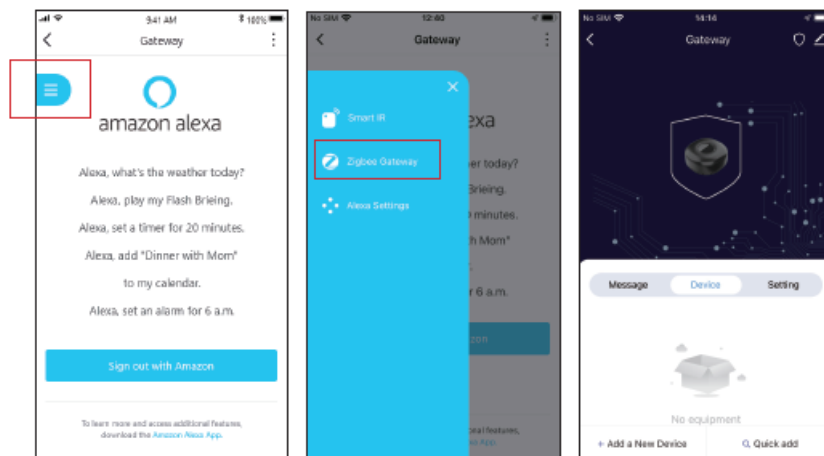


Zigbee gateway

Function: Zigbee gateway is used to connect Zigbee products to WOOX Security app, you can connect up to 100 Zigbee products from a single gateway.

Security status: Gateway has 3 security statuses: home mode, away mode, and disarm mode. You can change the gateway status with the WOOX Security app or voice control. In-home/away mode, you can select a specific product in the app to secure your home.

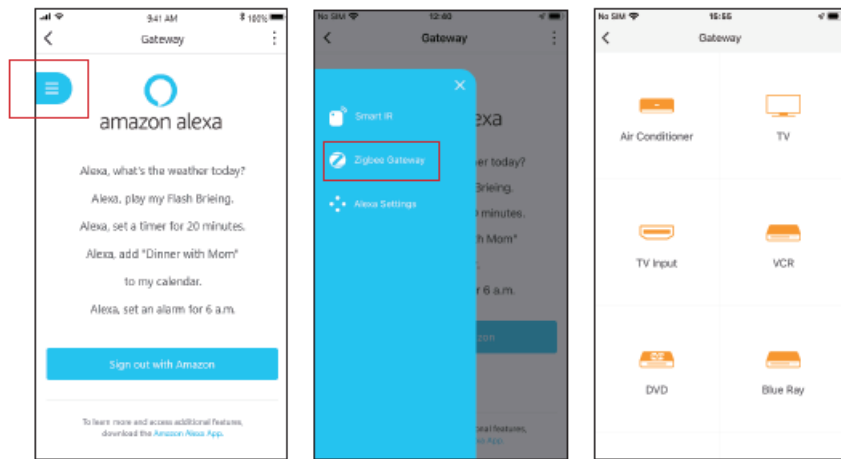
Manage Zigbee products: You can access the Zigbee gateway in the left menu as below. In the Zigbee gateway, you can add Zigbee products and check the message that occurred by Zigbee products.



Smart IR

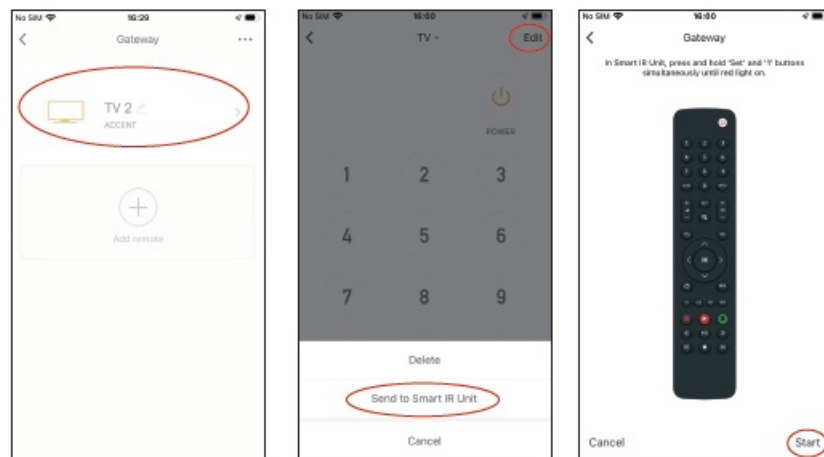
Function: R4060 supports most of home entertainment devices with IR frequency at 38K Hz with multi-angle directions in 6 meters range. It works with over 8,000 devices from 2,000+ brands, including TV, VCR, DVD, Blu-ray, AV receiver, Audio/Amplifier, CD, TV Box, Media box, SAT/Cable, Projector, Soundbar, etc. IR learning is also supported if there is no available code. More important, you can control these devices via voice, e.g.: "Alexa, turn on the TV".

Add IR device in-app: You can access Smart IR in the left menu as below.

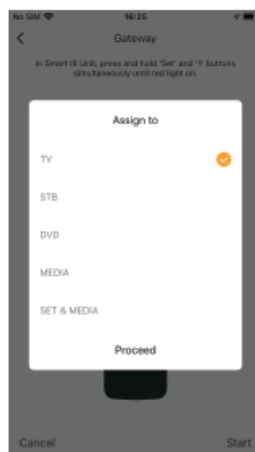


IR remote control: R4060 comes with an IR remote control accessory without IR codes inside. To use it, users need to download IR codes from the cloud through the gateway.

Download IR codes from cloud to IR remote control: open smart IR menu in the app, click “Edit” in the right top corner, then click “Send to Smart IR Unit”.



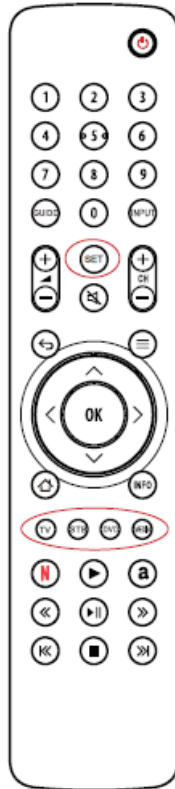
- Press and hold the “Set” SET and “1” buttons simultaneously until the power button lights on in red.
- Select the category that you want to store in IR remote control, press “Proceed” to start downloading from gateway to IR remote control via RF 433.92MHz frequency. It supports to store 5 IR remote codes: TV, STB, DVD, MEDIA, and SET&MEDIA.



- After downloading success, select the corresponding category to control your device. e.g.: if you downloaded

TV codes to the TV category when controlling your TV off, you need to press the “TV” button first, then press the power button to turn off the TV. If you downloaded TV codes to the SET&MEDIA category when controlling your TV off, you need to press the “SET” button SET and “MEDIA” button at the same time first, then press the power button to turn off the TV.

Note: you can use the IR remote control without a gateway nearby.



- Clear IR codes stored in IR remote control and reset to default: press and hold “SET” button SET and “0” button at the same time for 3 seconds until power button light on in red, then press “OK” button to set to default, LED will flash twice once completed.
- Note:
LED will flash 6 times if the download fails.
The IR remote control will exit downloading mode automatically if there is no action within the 30s.

Siren

Function: the siren function is built-in firmware, once the alarm is triggered by the app or Zigbee products, the gateway will alert with 85dB sound, the sound will not stop until the alarm is canceled.

Bluetooth speaker

Function: With Bluetooth inside, you can use it as a Bluetooth speaker, it's Bluetooth name is R4060.

Note: R4060 can not connect to other Bluetooth speakers via Bluetooth, only AUX is supported.

Technical data

- Input: DC 5V/2A
- Voice service: Alexa built-in
- Wake up: Far-field wake up
- Speaker: 3W

- Output: AUX
- Bluetooth: supported
- Zigbee: Tuya Zigbee 3.0
- Zigbee distance: indoor 20-30 meters
- Siren: 85dB alarm sound
- Wireless connection: 2.4GHz Wi-Fi & Zigbee 3.0 RF frequency: 433.92MHz
- IR frequency: 38KHz
- IR distance: Max. 6 meters
- Dimension: 100x100x53.5mm
- Working temperature: -10°C -45°C
- Working humidity: ≤85%RH

Caution:

This device complies with Part 15 of the FCC rules and Industry Canada license-exempt RSS standard(s). Operation is subject to the following two conditions: (1) this device may not cause harmful interference, and (2) this device must accept any interference received, including interference that may cause undesired operation. The manufacturer is not responsible for any radio or TV interference caused by unauthorized modifications or changes to this equipment. Such modifications or changes could void the user's authority to operate the equipment.

This radio transmitter (identify the device by certification number or model number if Category II) has been approved by Industry Canada to operate with the antenna types listed below with the maximum permissible gain indicated. Antenna types not included in this list, having a gain greater than the maximum gain indicated for that type, are strictly prohibited for use with this device.

This equipment has been tested and found to comply with the limits for a Class B digital device, pursuant to part 15 of the FCC Rules. These limits are designed to provide reasonable protection against harmful interference in a residential installation. This equipment generates, uses, and can radiate radio frequency energy and, if not installed and used in accordance with the instructions, may cause harmful interference to radio communications. However, there is no guarantee that interference will not occur in a particular installation. If this equipment does cause harmful interference to radio or television reception, which can be determined by turning the equipment off and on, the user is encouraged to try to correct the interference by one or more of the following measures:

- Reorient or relocate the receiving antenna.
- Increase the separation between the equipment and receiver.
- Connect the equipment into an outlet on a circuit different from that to which the receiver is connected.
- Consult the dealer or an experienced radio/TV technician for help.
- The device has been evaluated to meet general RF exposure requirements.

To maintain compliance with FCC's RF exposure guidelines, this equipment should be installed and operated with a minimum distance of 20cm between the radiator and your body.

Documents / Resources

<p>Multi function Gateway</p>  <p>R4060</p>	<p>OEM R4060 Multi function Gateway [pdf] User Manual R4060, 2AZDF-R4060, 2AZDFR4060, R4060, Multi function Gateway</p>
--	---