

Oelo Retrofit Controller App



Oelo Retrofit Controller App User Manual

[Home](#) » [oelo](#) » Oelo Retrofit Controller App User Manual 

Contents

- 1 Oelo Retrofit Controller App
- 2 Product Information
- 3 Product Usage Instructions
- 4 THE OELO RETROFIT
- 5 RETROFIT COMPONENTS
- 6 REMOVING THE OLD CONTROL BOARD
- 7 INSTALLING THE NEW CONTROL BOARD
 - 7.1 FINAL WIRING RESULTS
- 8 THE FINAL TOUCHES
- 9 Contact Information
- 10 Documents / Resources
 - 10.1 References

oelo

Oelo Retrofit Controller App



Product Information

Specifications:

- **Brand:** OELO
- **Product Name:** Retrofit Controller
- **Model:** Oelo Controller Retrofit Kit

Product Usage Instructions

Retrofit Components Overview:

The OELO Retrofit Controller Kit includes various components that are essential for upgrading your existing controller to the latest technology. Key components include:

- Current Control Unit
- Existing Screws and Outlet Plate
- New Control Board
- New Power Supply
- Antenna for improved communication

Tools Required:

- #2 Phillips Screwdriver
- 1/8th Flathead Screwdriver (or smaller)

Installation Process:

Step 1: Removing the Old Control Board

1. Disconnect power from the current Control Box and any connected Booster Boxes.
2. Label the wires connected to the Printed Control Board (PCB) for easier re-wiring.
3. Use a 1/8th Flathead Screwdriver to disconnect the wires from the PCB.

Step 2: Installing the New Control Board

1. Mount the new Control Board on the metal plate provided in the kit.
2. Insert the new Power Supply into the Control Box using the supplied double-sided tape.
3. Connect the wires to the corresponding terminals on the new Control Board.

Step 3: Finalizing the Installation

1. Reinstall the Outlet Plate that was removed earlier to access the Power Supply wiring.
2. Ensure all components are securely in place and cables are properly connected.
3. Power up the system and test the functionality of the new Controller.

Frequently Asked Questions (FAQ):

- **Q: Can I expand my system with additional zones using the Retrofit Kit?**

A: Yes, you can expand your system by adding more zones to accommodate additional lights and channels.

- **Q: What should I do if I encounter difficulties during the installation process?**

A: If you face any challenges during installation, refer to the troubleshooting section in the manual or contact our customer support for assistance.

THE OELO RETROFIT

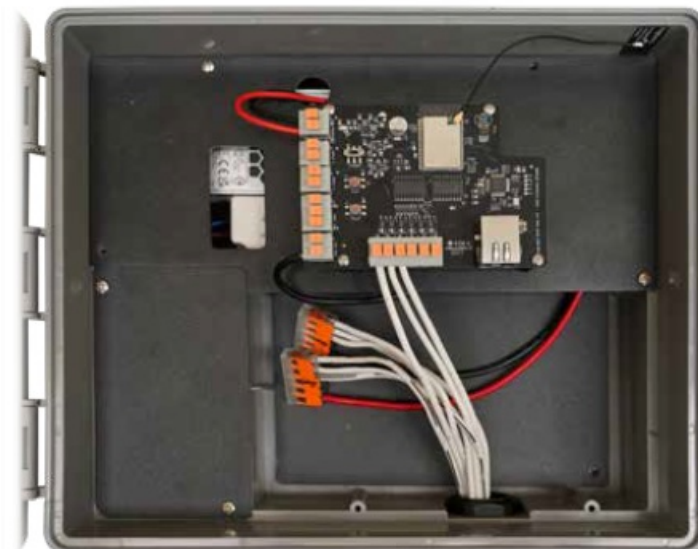
Congratulations on your Oelo Controller Retrofit Kit purchase. This manual provides step-by-step instructions to help you update your controller to Oelo's latest technology.

- Your new controller will have the ability to fit two transformers to power up to 500 linear feet of lights from a single control box.
- Plus, your controller has six (6!!) Individually controllable signal outputs, which allow you to install six different zones from one controller for creative installs, like separate out-and-down sections and front and rear zones!
- Last but not least, the new controller works with the new Oelo Evolution App!

BEFORE



AFTER



RETROFIT COMPONENTS

Below are key retrofit components you may want to familiarize yourself with before installing.

Existing Components

- **CURRENT CONTROL BOX:** Your current Control Box will be used in the retrofit. (The new Control Board will replace your current Control Board within this box.)
- **EXISTING CONTROL BOARD SCREWS:** The existing Control Board Screws, which hold the current Control Board / Metal Plate in the box, will be re-used to mount the new Control Board / Metal Plate.
- **EXISTING OUTLET PLATE:** The existing Outlet Plate will be removed to access the Power Supply wiring, and then will be re-installed upon completion.
- **WIRE, LIGHTS + CHANNEL:** The new Controller plugs directly into your existing wire, light and channel runs. (You can also decide to expand your system to add additional zones).



Retrofit Components

- **NEW CONTROL BOARD:** The new Control Board is mounted to a metal plate (which screws into the Control Box after the old board has been removed).
- **NEW LPV-20-12 POWER SUPPLY:** The new Power Supply is pre-connected to the new Control Unit Board and will be inserted into the existing Control Box with supplied double-sided 3M tape.
- **NEW ANTENNA:** The Retrofit Kit is equipped with a high-powered antenna to help your Controller communicate with your WiFi for ultimate cloud-based control.



Installation Tools

- **#2 PHILLIPS SCREWDRIVER:** Needed to remove Control Box metal plates.
- **1/8TH FLATHEAD SCREWDRIVER (OR SMALLER):** Needed to disconnect wires.



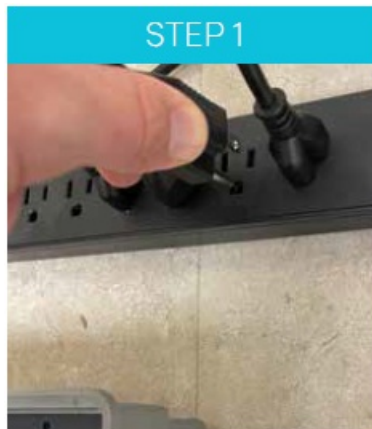
REMOVING THE OLD CONTROL BOARD

Disconnect Power

STEP 1: Disconnect power to the current Control Box and any Booster Boxes connected to the unit.

WARNING

Do NOT plug in the system until ALL wiring is complete. Wiring while the system is live will void the warranty.



Label Your PCB Wires

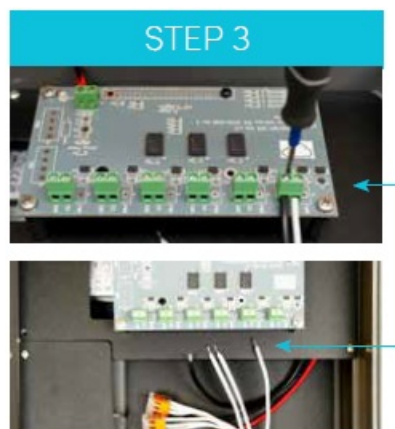
OPTIONAL STEP:

Label the wires connected to the Printed Control Board (PCB). (Note: Each wire is already labelled with a small imprinted descriptor; however, this step may help you more easily re-wire your new Control Board.)



Disconnect PCB Wires

STEP 3: Use a 1/8th Flathead Screwdriver to disconnect the Wires connected from the PCB.



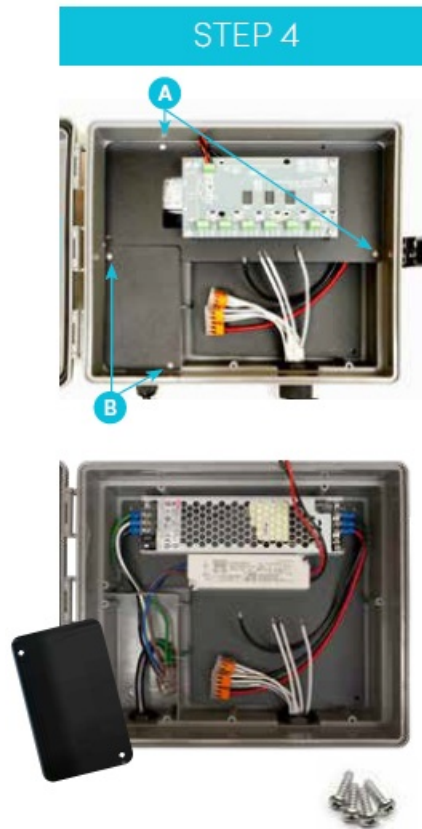
INSTALLING THE NEW CONTROL BOARD

Remove the Plates

STEP 4:

Using a Phillips Screwdriver, remove the metal plates.

- **A.** Remove the (2) screws holding the Control Plate.
- **B.** Remove the (2) screws holding the Outlet Plate. (This provides access to the Power Cord wires, which are used to wire the new Power Supply in Steps 5 and 8.)
- **C.** Keep screws for later use.



Detach Power Supply Wires

STEP 5:

Disconnect the Blue and Brown wires from the LPV-20-5.

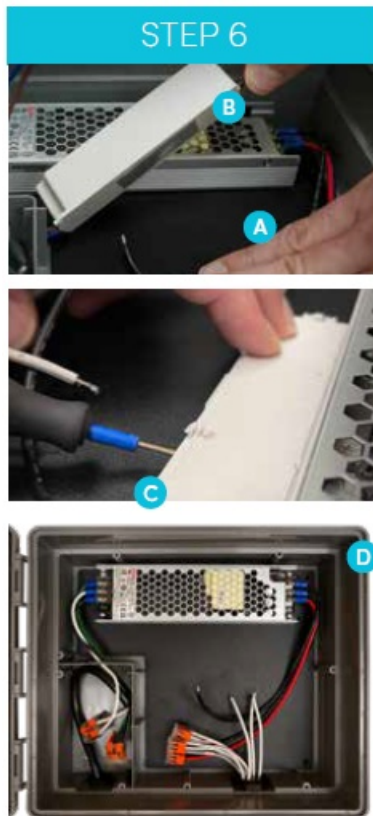
- **A.** Flip up the Wago of the Blue Wire and remove the wire.
- **B.** Flip up the Wago of the Brown Wire and remove the wire.
- **C.** Pull the Blue and Brown wires out of the Outlet Relief; leave them floating freely until Step 7.



Remove the Power Supply

STEP 6: Remove the current LPV-20-5 Power Supply.

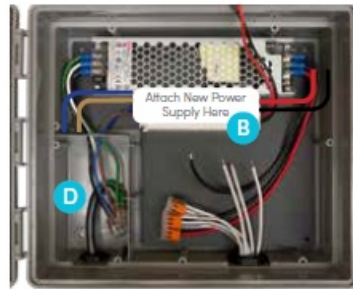
- **A.** Place your hand on the Control Box metal board, firmly holding it down.
- **B.** Grab the Red and Black wires at the base of the power supply and steadily pull the power supply off of the plate.
- **C.** If the back of the power supply stays attached to the plate, use a Phillips Screwdriver to wedge the tip underneath the backing and pry the backing off.
- **D.** Your controller will look like this after Step 6.



Install New Power Supply

STEP 7: Install the new LPV-20-12 Power Supply.

- **A.** Remove the red backing from the double-sided tape on the new LPV-20-12 Power Supply.
- **B.** Place the LPV-20-12 on the Power Supply Plate with the Blue and Brown wires facing toward the Power Outlet.
- **C.** Firmly apply pressure to the Power Supply for 10 seconds.
- **D.** Feed the Blue and Brown wires into the Outlet Relief.

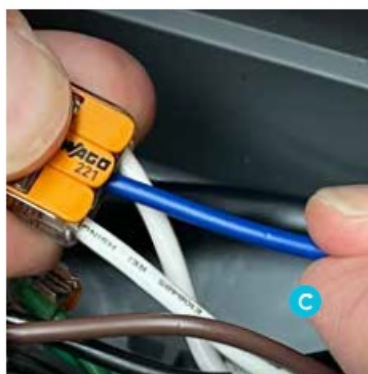
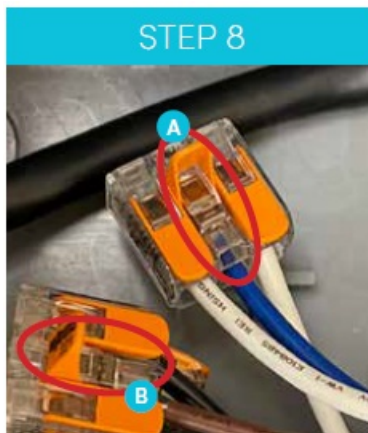


Wire the New Power Supply

STEP 8:

Insert the LPV-20-12's Blue and Brown wires that are coming from the into the designated Wagos below.

- **A.** Insert the Blue Wire into the Wago with the White Wires; flip closed.
- **B.** Insert the Brown Wire into the Wago with the Black Wires; flip closed.
- **C.** Test the connection by gently pulling on the wires.

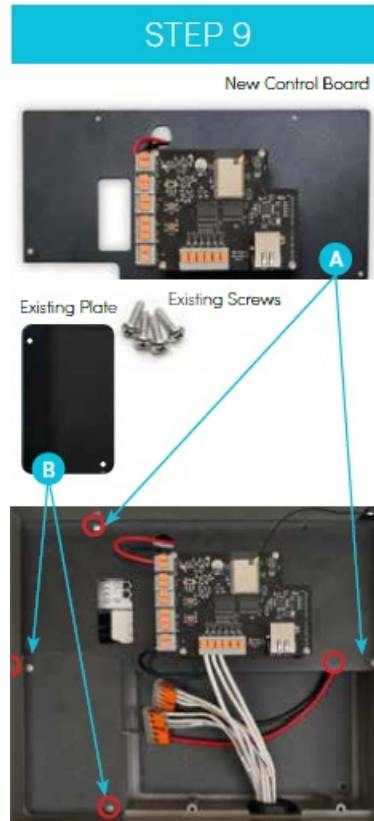


Attach the Above Plates

STEP 9:

Attach the plates (as described below) using a Phillips Screwdriver:

- **A.** Use 2 of the saved screws to secure the new Control Plate.
- **B.** Use 2 of the saved screws to secure the existing Outlet Plate.

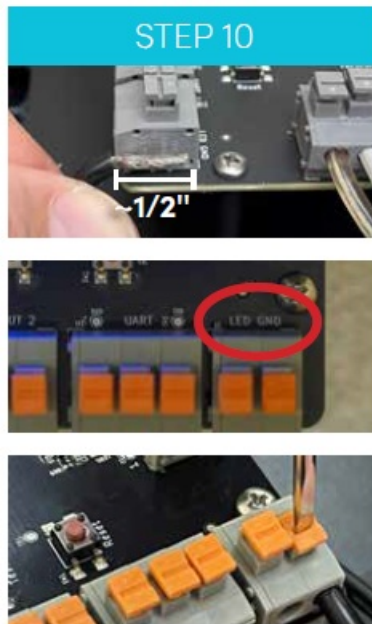


Insert the GND Wire

STEP 10:

Insert the Ground Wire into the port labelled GND on the Control Board.

- **A.** Strip the GND Wire to the length of the port, approximately 1/2". If it is too short, the wire will not stay connected.
- **B.** Press and hold the button on the GND Port.
- **C.** Insert the GND Wire into the GND Port. Do not have exposed wire showing.
- **D.** Release the button on the GND Port.
- **E.** Gently tug on the wire to confirm a secure connection.

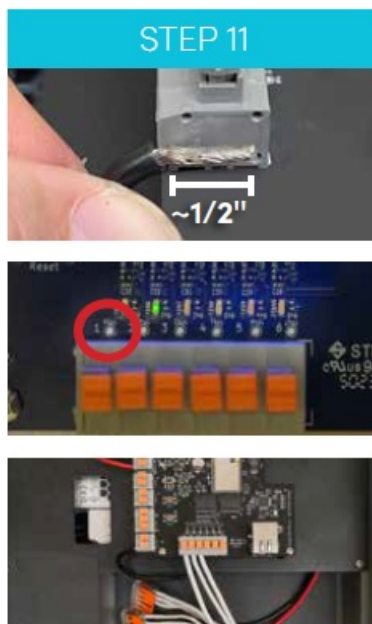


Insert the S Signal Wire(s)

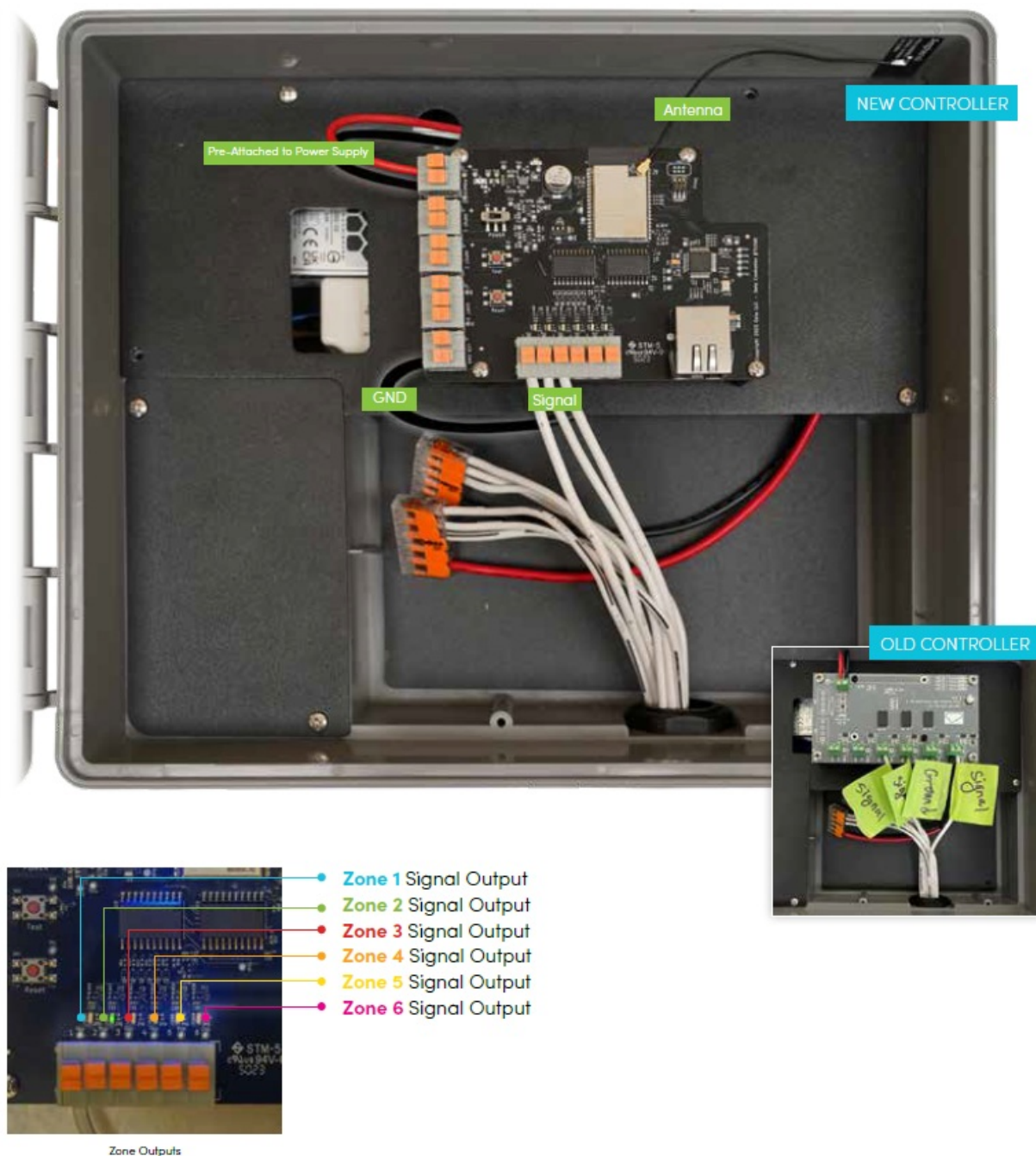
STEP 11:

Insert the Signal Wire(s) into the into the ports labelled 1-6 on the Control Board.

- **A.** Strip the S Wire(s) to the length of the port, approximately 1/2". If it is too short, the wire will not stay connected.
- **B.** Press and hold the button on the S Port #1.
- **C.** Insert the S Wire into the S Port #1. Do not have exposed wire showing.
- **D.** Release the button on the S Port #1.
- **E.** Gently tug on the wire to confirm a secure connection.
- **F.** If you have more than one Signal Wire (or want to add additional lights/zones) use the next numerical S Port.



FINAL WIRING RESULTS



THE FINAL TOUCHES

Attach Antenna

STEP 12:

Attach the Antenna to the Control Box.

- **A.** First, make sure the Antenna connection is secure by pressing on the antenna, where it connects to the Controller.
- **B.** Clean the inside corner of the box with alcohol to secure the Antenna Receiver.
- **C.** Remove the Antenna Receiver's tape backing, then press and hold onto the box for 5 seconds.



Fasten the New Sticker to the Door

STEP 13:

Fasten the supplied sticker to the inside door panel over the old label for updated instructions.

Apply the Finals Touches

STEP 14: The final steps!

- **A.** Remove your optional wire labels.
- **B.** Plug in the Control Box and Booster Boxes into power.
- **C.** Congrats! Your retrofit is complete.
- **D.** Now, it's time to set up your new controller and Oelo Evolution App: oelo.com/resources/manuals.

STEP 13



STEP 14



Contact Information

Tag us in your photos and videos, please!



@oelolightingsolutions



@oelolighting



@oelolighting




@oelo

If you have issues with your retrofit install, please contact our troubleshooting desk. 970-212-3676.

- oelo.com
- 3842 Redman Dr., Fort Collins, CO
- 970.212.3670

See an Oelo representative or authorized installer for further details. All information in this brochure is the latest available at the time of publication. Printed in the USA. 0324 ©2024 Oelo.

Documents / Resources

	<p>Oelo Retrofit Controller App [pdf] User Manual Retrofit Controller App, Controller App, App</p>
---	--

References

- [O Best Permanent Christmas Lights & Commercial LED Lighting | Oelo Lights](#)
- [O Manuals - Oelo](#)
- [User Manual](#)

[Manuals+](#), [Privacy Policy](#)

This website is an independent publication and is neither affiliated with nor endorsed by any of the trademark owners. The "Bluetooth®" word mark and logos are registered trademarks owned by Bluetooth SIG, Inc. The "Wi-Fi®" word mark and logos are registered trademarks owned by the Wi-Fi Alliance. Any use of these marks on this website does not imply any affiliation with or endorsement.