

# OP-2 OCTO Pulse Instruction Manual

[Home](#) » [OCTO](#) » **OP-2 OCTO Pulse Instruction Manual** 

## Contents

- [1 OP-2 OCTO Pulse Instruction](#)
- [2 Overview](#)
- [3 Features & Benefits](#)
- [4 Product Specification](#)
- [5 Installation](#)
- [6 Quick Start Guide](#)
- [7 Lights Status Monitor](#)
- [8 Wave Mode flow patterns](#)
- [9 Dismantling and Maintenance](#)
- [10 TroubleShooting](#)
- [11 Documents / Resources](#)
- [12 Related Posts](#)

## OP-2 OCTO Pulse Instruction



### Dear Customer

Thank you for choosing OCTO, a quality product manufactured by HONYA CO., LTD. In order for you to safely use our product for maximum results, please read the instruction prior to use. We would strongly suggest that you retain this Instruction for future reference.

#### Safety on Magnet

- CAUTION-Extremely Strong Magnets, please handle with care.
- Keep magnets out of reach of children
- Do not snap both magnets together directly
- Keep the magnets away from electronics products and magnetic storage devices such as credit cards, pacemaker etc.

### Notes

- Never handle any Electrical Component when your hands are wet.
- Ensure that all components (Power Adapter, Controller, Wires, etc) are properly set -up to prevent accidental damage
- For Indoor use ONLY.
- For Controller operation, please refer to the instructions as per this manual.
- Keep Controller Cool and Dry, do not expose to Direct Sunlight or Heat.
- Pump Protection System – if pump is detected to be running dry, it will stop operating after about a minute. To restart the Pump, off the power, re-position the pump to ensure that it is submerge in the water then turn on the power.
- Should in the unlikely event that your pump stop working, please refer to the Trouble Shooting page in this manual.
- Please maintain your pump as per this manual.

## Overview

- Introducing our new OCTO series Direct Current (DC) Wave Pump, OCTO Pulse features a Multiple Angle Adjustment, an all new controller with a 0-1 0V port, 4 pre-program pulsing patterns, high quality ceramic shaft and bearing to reduce wear and tear, and the latest variable speeds flow technology for refined control, enhanced performance, energy-efficiency and safer operations.
- With the bespoke controller, users have full control over the flow rates by selecting amongst eight preset speed settings; indicated by eight LEDs. A 15 or 60 minutes feed mode can also be engaged or disengaged with the push of a button.

## Features & Benefits

- 360° Range of Adjustment
- Low-profile Magnetic Mount
- Strong Rare-earth Magnet Impeller
- Compact & Durable Construction
- Silent operation
- 4 Preprogrammed Flow Patterns
- Dual Feed Mode – 15 or 60 min
- 0-10v External Controller Connection

## Product Specification

OCTO Pulse Wave Pump										
Item #	Product	Max Flow Rate		Power	Tank Water Volume		Suggested Tank size		Max Wall Thickness	
		LPH	GPH	W	L	US GAL	cm	in	mm	in
110401	OP-2	6000	1585	5-10	80-300	21-80	40-100	16-40	12	1/2
110402	OP-4	17000	4490	11-32	300-1800	80-475	100-180	40-71	15	5/8

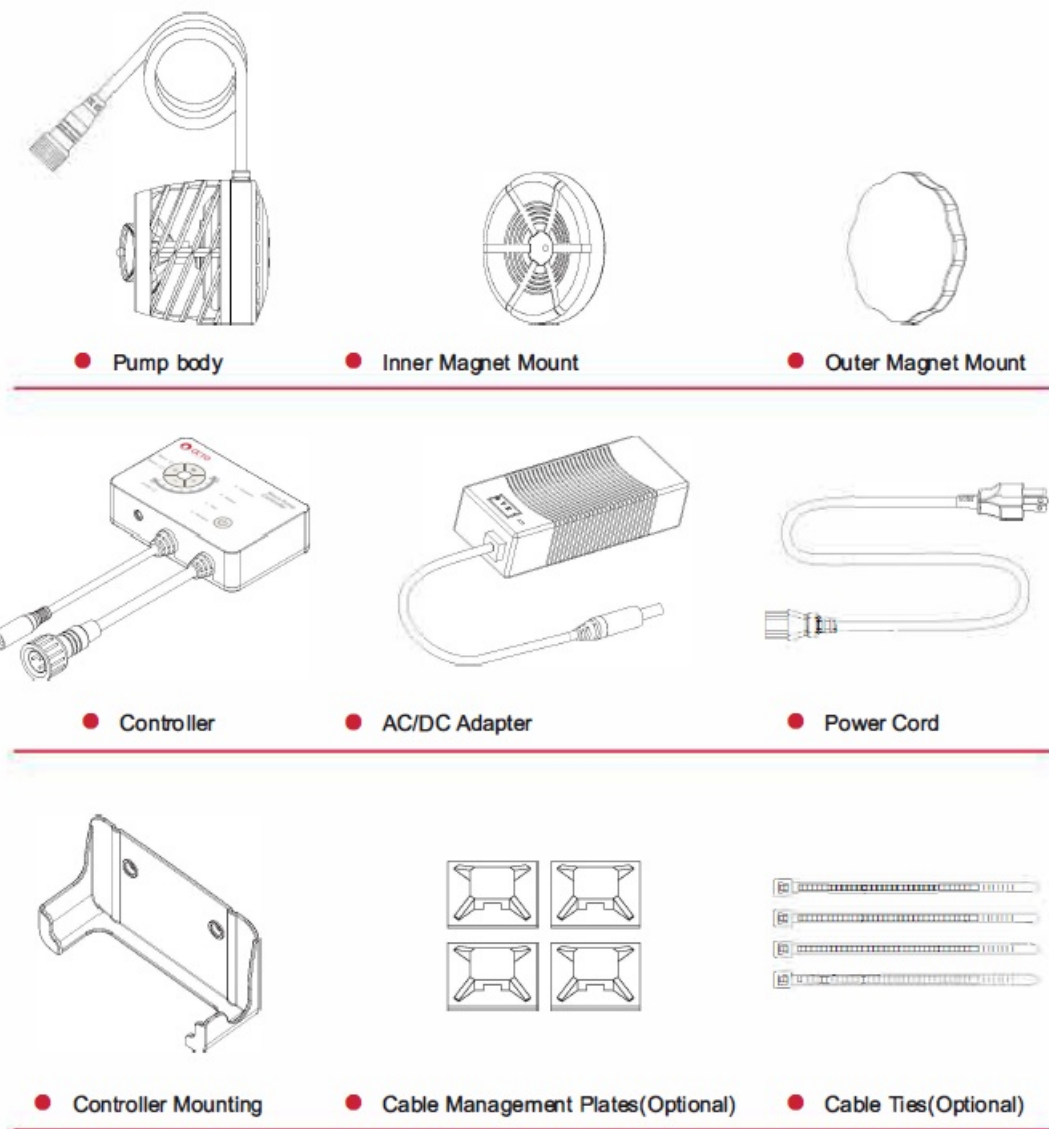
## Flow Rate Charts

OP-2			
Step	Power	Flow Rate	
	W	LPH	GPH
1	5.0	3200	845
2	6.0	3800	1000
3	6.5	4050	1070
4	7.0	4450	1170
5	7.5	4720	1250
6	8.5	5100	1350
7	9.5	5820	1540
8	10.0	6000	1585

OP-4			
Step	Power	Flow Rate	
	W	LPH	GPH
1	11	5360	1410
2	14	7900	2080
3	17	9600	2530
4	20	11300	2980
5	22	12400	3270
6	25	14100	3720
7	28	15900	4200
8	32	17000	4490

## Package

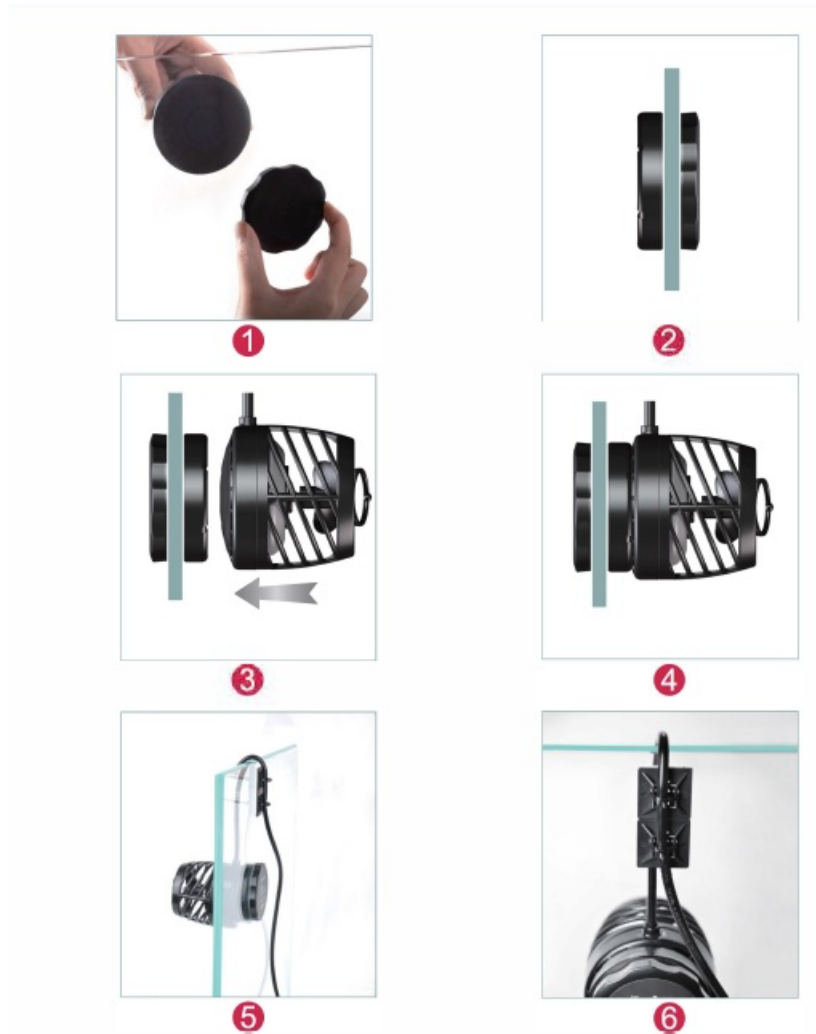
Please check the content in the package



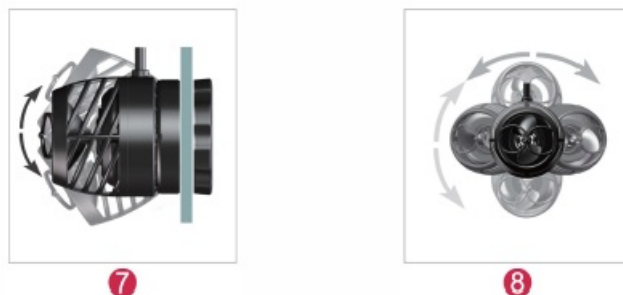
**Attention:**

DC24V /1.0A (AC/DC Adapter) suitable for OP-2 DC24V /2.5A (AC/DC Adapter) suitable for OP-4

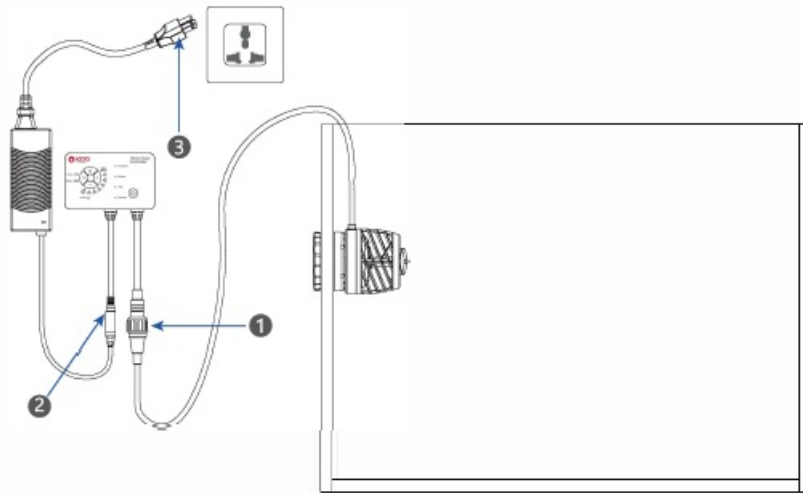
## Installation



- Slide the Inner and Outer Magnet into your desired position(image 1/2).  
DO NOT Snap both Magnets together.
- Mount the Pump to the Inner Magnet, ensuring that the power cable is on top (image 3/4).

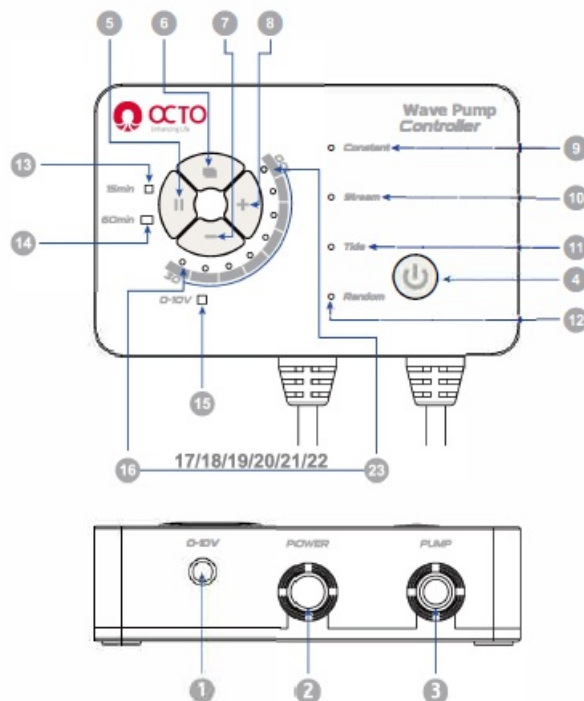


- Tie the cord to the Cable Management Plate using a Cable Tie. Do not tighten the Cable Tie till confirmation of Pump Position. Ensure to have some allowance for final adjustment of pump position before cutting off the excess Cable Tie.
- Adjust angles according to your requirements(image 7/8).



- Attention: Before starting the pump, please ensure that livestock are not near the pump.

## Quick Start Guide



## Legend

1. 0-1 0V Input (3.5mm TRS Audio port)
2. Power supply Connection (DC24V)
3. Connection for OCTO Pulse Wave Pump

### Press

4. Power ON Switch – press once to toggle unit On/Off. During “Pause” function, press once to cancel “pause” function
5. Pause function – 15mins or 60mins options. Press once for 15mins and twice for 60mins “pause” function. Once set, lights indication (13 or 14) will be lighted.

6. 0 Press 6(@) for Wave Mode Selection. Continue Pressing will select the desired modes.
7. Flow Rate Controller for Wave Pump "+" and "-" to adjust desired flow rate
8. 0 Constant
9. Stream
10. Tide
11. Random

## Lights Status Monitor

1. 0-10V light "on" = 0-10V connected
2. 8 Steps Flow Rate Indicator Lights

### Attention:

1. When using 0-10V to control DC Pump, flow rate will not be indicated on the 8 Steps
2. Flow Rate Indicator. For Constant Flow Mode, adjustment for maximum and minimum flow rate is possible. For the other Flow Modes, you can only adjust the maximum flow (indicated RED line) to a lower rate, as the minimum flow rates are prefix. See the attached flow rate charts.



### 0-10V Wiring diagram:

0-10V Dimming Cable 3.5mm TRS Audio port

## Wave Mode flow patterns

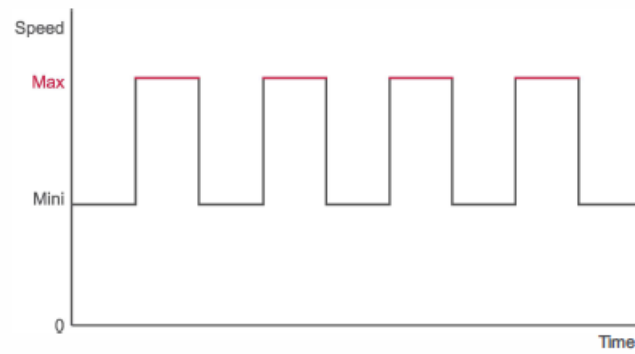
- Constant Flow Mode

Speed: Flow rate can be adjusted via (7 or 8)



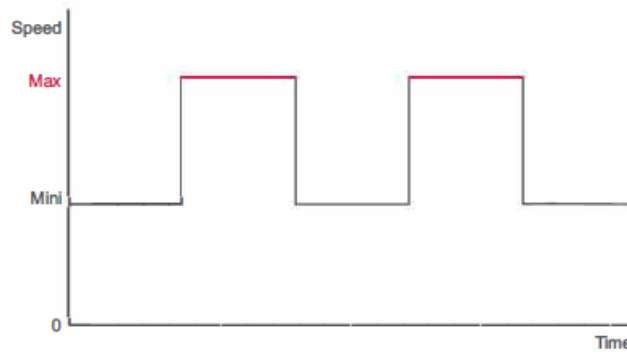
- Tide Flow Mode

Max Speed: Flow rate can be adjusted via (7 or 8)



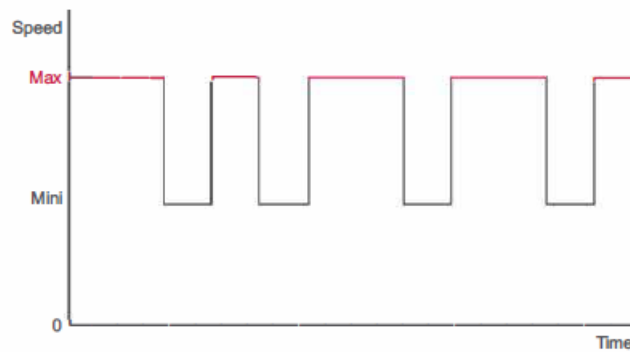
- Stream Flow Mode

Max Speed: Flow rate can be adjusted via (7 or 8)



- Random Function Mode

Random Mode will randomly select ConstansStream/Tide Max Speed: Flow rate can be adjusted via (7 or 8)





## Dismantling and Maintenance



1



2



3



4

- Turn Pump Cover Anti-Clockwise to remove cover (image 1)
- Use a Flat Tip Screwdriver to remove the impeller plate (image 2/3)
- Wash with fresh water.



5



6



7

- Snap Back the impeller cover plate evenly (image 4)
- Ensure that impeller is running smoothly before use (image 5)

## TroubleShooting

16-23 Indicator Lights Blinking	Pump Protection System Activated. Ensure pump is submerge into the water before continue operating.
	Slipping Impeller- change Impeller (wear and tear)
Both 13 & 14 Indicator Lights Blinking	Turn Off the Device and Check all connections
	Open up the Impeller Cover Plate to make sure no foreign objects is stuck within.
	Ensure that Impeller is in place and free spinning

## Documents / Resources

	<p><b><a href="#">OCTO OP-2 OCTO Pulse</a></b> [pdf] Instruction Manual OP-4, OP-2, OCTO Pulse, OP-2 OCTO Pulse</p>
--	---

