



Obsbot Tiny 4k User Manual

[Home](#) » [OBSBOT](#) » Obsbot Tiny 4k User Manual 

Contents

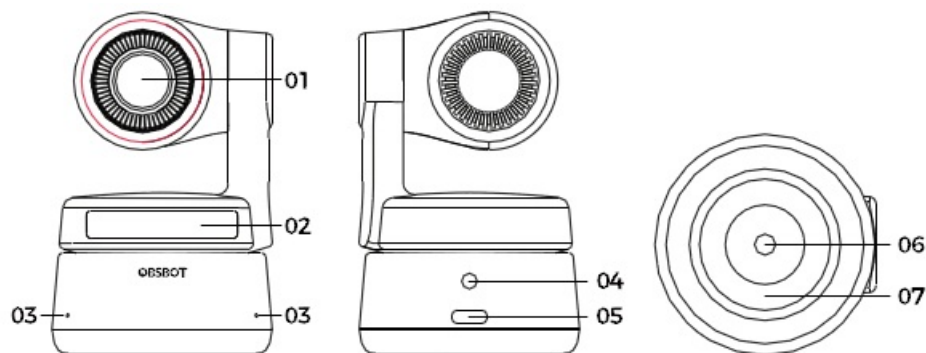
- [1 Obsbot Tiny 4k](#)
- [2 Parts Info](#)
- [3 Setting Up Tiny 4K](#)
- [4 Indicator Statuses](#)
- [5 OBSBOT TinyCam](#)
- [6 Documents / Resources](#)
 - [6.1 References](#)
- [7 Related Posts](#)

 **OBSBOT**

Obsbot Tiny 4k



Parts Info



1. 4K Ultra HD lens
2. Camera Indicator
3. Dual Microphone
4. DC Power Port
5. USB-C Port
6. UNC 1/4-20 Interface
7. Magnetic Base

Setting Up Tiny 4K

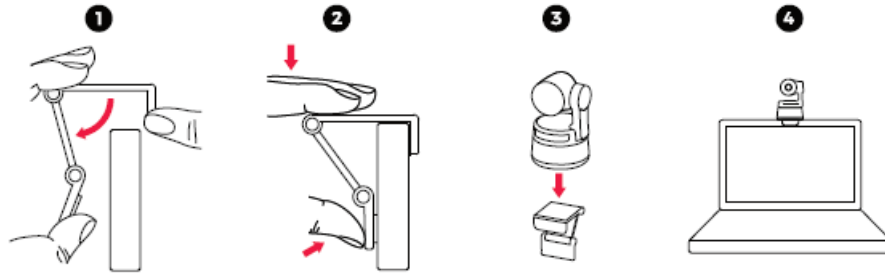
Placing Tiny 4K

The webcam has an adjustable magnetic mount to fix the device to a monitor, desktop, or tripod.

Placement on a Monitor

Please operate as shown in the following figure:

- ① Open the flexible base and mount it, attach one side of the gluing to the back of the monitor.
- ② Making sure the foot on the flexible base is flush with the back of your monitor.



Placement on a Desktop

Place OBSBOT Tiny 4K directly on your desktops.

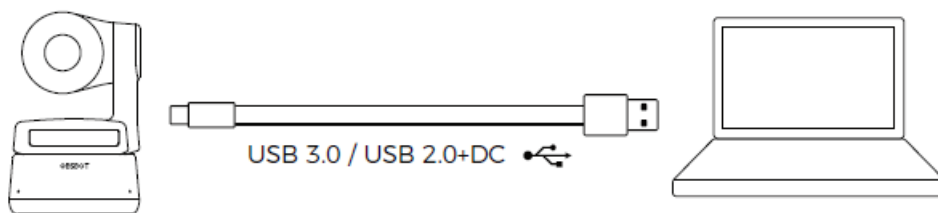
Placement on a Tripod

OBSBOT Tiny 4K is equipped with a standard UNC 1/4-20 nut connector on the base for mounting the camera to a stand/tripod.

Connecting Tiny 4K

The webcam is compatible with Windows and Mac computers. To set up your OBSBOT Tiny 4K, please use the provided USB-C data cable for connecting. In addition, please use the provided USB-C to USB-A adapter if necessary. The webcam will begin to install automatically on your device. Please allow the webcam a few seconds to finish installing before attempting to access it. Then you can feel free to use any popular calling platforms such as Zoom, Microsoft Teams, Skype, Google Meet to get Tiny 4K streaming.

- If the product is in working condition for a long time, the bottom of the product will get hot, which is normal.
- Connecting Suggestions: ① USB 3.0 Port (Recommendation); ② USB 2.0 Port + DC Port.
- 4K streaming requires compatible third-party software.



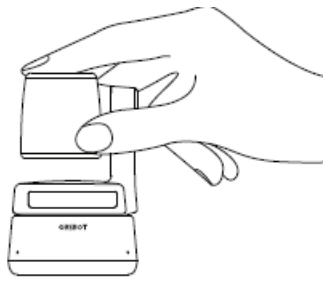
Gimbal

OBSBOT Tiny 4K is equipped with a 2-axis gimbal. The controllable rotation range for the pan is $\pm 150^\circ$, and for the tilt is $\pm 45^\circ$.

Privacy Mode

Point the lens straight down. When the indicator light is off, it means that the privacy mode is turned on.

NOTE: The product cuts off both the video and audio in the privacy mode.



Upside Down Mode

OBSBOT Tiny 4K supports using with upside-down mode. It can be mounted upside down, then the screen will rotate automatically for use.

Gesture Control

OBSBOT Tiny 4K has the first of the kind implementation of gesture control in AI webcam, empowering users to access a series of functions such as select/cancel tracking target, zoom in/out with natural simple gestures. No need to press the button or interrupt your flow. First of all, please put your hand nearby your face and keep your fingers splay out when you making gestures, and then the camera indicator light will turn blue. The three blue lights flash one by one and then all of them flash once together means your gesture is recognized successfully.

NOTE: Please go to the link below to find the tutorial video for gesture control: <https://obsbot.com/obsbot-tiny-4k/explore>



Select/Cancel Target



2x (Default) Zoom in/out

Zoom

OBSBOT Tiny 4K supports 4x digital zoom.

1. Gesture Control

By default, the zoom settings is 2x. Users can create customized zoom settings from 1x to 4x via OBSBOT TinyCam.

2. Manual Control

Users can do the manual control for zoom settings from 1x to 4x via OBSBOT TinyCam.

Focus

OBSBOT Tiny 4K supports two focusing methods.

1. Auto-Focus

Based on OBSBOT's AI technology, the auto-focus intelligently adjusts the lens in real-time so you always stay in focus, no matter you move toward or away from the camera.

2. Manual Focus

Users can close the auto-focus function and switch to manual focus in OBSBOT TinyCam.

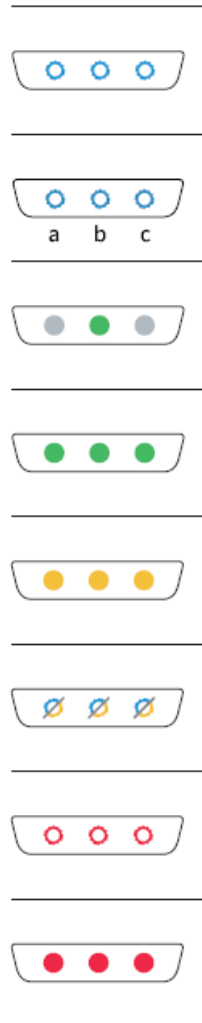
HDR

By default, HDR is off. Users can switch it in OBSBOT TinyCam. You look your best over video, even in low light and direct sunlight with HDR.

Indicator Statuses

Camera Indicator

The camera indicator is made up of four colors: red, yellow, blue and green. Different combinations of light colors and flicker frequencies represent different indications. They can show the current working status to the users.



- All three blue lights flash in a cycle which means the product is being initialized.
- The three blue lights flash one by one and then all of them flash once together means your gesture is recognized successfully.
- The middle of the green light keeps on which means no target was locked.
- All three green lights keep on which means the target was locked.
- All three yellow lights keep on which means losing target.
- During the upgrade, blue lights and yellow lights flash alternatively.
- All three red lights flash slowly which means upgrade failed.
- All three red lights keep on which means product failure including PTZ failure or AI error and so on.

OBSBOT TinyCam

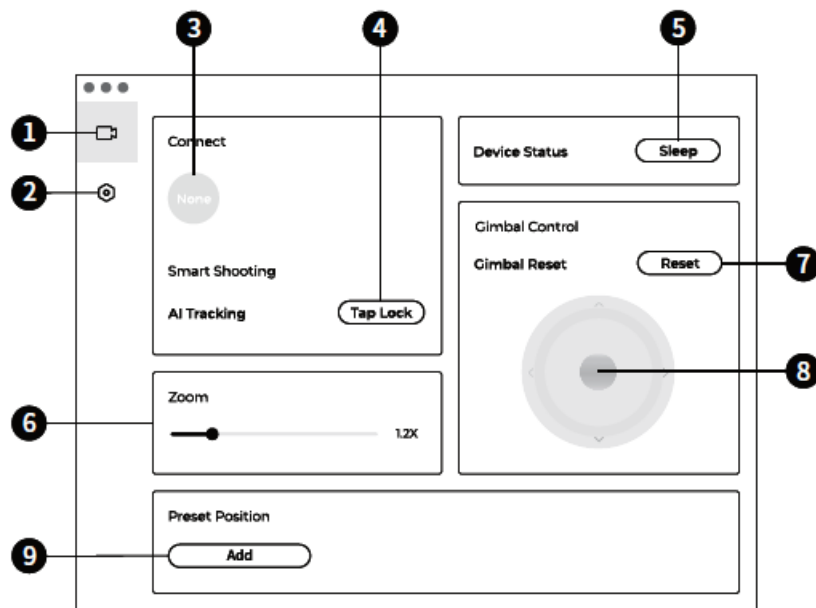
Software Overview

OBSBOT TinyCam is the software that comes with OBSBOT Tiny 4K for advanced setting. It is compatible with Windows and macOS. The users can do some control such as adjust the rotation of the gimbal, select target or unlock target, zoom in or out, set preset positions and so on.

Installation

Please visit <https://obsbot.com/download> to download the OBSBOT TinyCam to get further user experience.

Homepage



1. Homepage
2. System Setting
3. Connect
Displaying the connection status of devices. The software can connect up to 4 devices and users can also switch the connection among multiple devices.
4. Smart Shooting
One click to lock/cancel the tracking target.
5. Device Status
One click to put your device to sleep or wake it.
6. Zoom
Manually adjust the zoom settings. It supports up to 4x digital zoom.
7. Gimbal Reset
Reset the gimbal to the initial position.
8. Gimbal Control
Manually control the gimbal.
9. Preset Position
Find and open it in the system settings. There are 3 preset positions can be added. Users can also delete it and rename it by right-click.

System Setting

1. Software Version

Find the current software version. The update will be pushed to the device automatically when the new version has been released.

2. Firmware Version

Find the current firmware version. The update will be pushed to the device automatically when the new version has been released.

3. Gesture Control-Locked Target

By default, it's on. The product cannot be used with gesture control for locked the target if you close this function.

4. Gesture Control-Zoom

By default, it's on. The product cannot be used with gesture control for zoom settings if you close this function.

5. Gesture Control-Zoom Factor

By default, the zoom settings is 2x. Users can create customized zoom settings from 1x to 4x.

6. Tracking Mode

There are 3 tracking modes. By default, it's standard mode.

1. Headroom Mode: Leave more space above your head. Recommended Usage Scenario: The close-range video call.
2. Standard Mode: It provides a standardized level for the auto-frame and tracking speed, which can cover most usage scenarios.
3. Motion Mode: It adjusts the auto-frame to capture the whole body and improved the speed of Ai tracking. Recommended Usage Scenarios: Dance, Yoga and any other indoor sports.

7. Configure Video

Adjusting camera parameters, which only supports Windows.

8. Anti-Flicker

By default, it's off. This feature helps reduce flicker if you are in a room with fluorescent lights or you plan on shooting a television screen.

9. HDR

By default, it's off. The exposure difference can be automatically repaired after being turned on it.

10. Auto-Focus

By default, it's on. Users can close the auto-focus function and switch to manual focus.

11. Face Focus

By default, it's on. The focus area is on the center of the frame when you turned it off. This setting can be only supported when the auto-focus is on.

12. Initial Boot Position

Preset PTZ initial position.

13. Preset Position

By default, it's off. There are 3 preset positions that can be added to the homepage after being turned on it.

14. Global Hotkeys

By default, it's off. Click to view the list of global keys.

15. Remote Controller

By default, it's off. Users can control the Tiny 4K by remote controller after the mode is turned on. Please go for buy it on OBSBOT official online store.

16. Language Switching languages.

17. More


1. Export Log: Manually export the log file.
2. Upgrade Manual: Firmware upgrade manual.
3. Firmware Upgrade: Entry for manually firmware upgrade.
4. Restore Factory Settings.

Firmware Upgrade

OBSBOT Tiny 4K can be upgraded in OBSBOT TinyCam. A prompt will be displayed after the device is connected when the firmware is available to upgrade. Please follow the instructions.

NOTE: Do not disconnect the OBSBOT Tiny 4K during firmware upgrade. Please check the Firmware Upgrade Guide on <https://obsbot.com/service/user-guide>

Documents / Resources

	Obsbot Obsbot Tiny 4k [pdf] User Manual
---	---

References

- [🕒 OBSBOT - AI Camera - Connecting you to the future](#)
- [🕒 Download Center | OBSBOT](#)
- [🕒 Explore More About OBSBOT Tiny Series](#)