



OBERLY HB-106SDS 3 In 1 Hand Blender Multi Function Food Processor User Manual

[Home](#) » [OBERLY](#) » OBERLY HB-106SDS 3 In 1 Hand Blender Multi Function Food Processor User Manual 

Contents

- [1 OBERLY HB-106SDS 3 In 1 Hand Blender Multi Function Food Processor](#)
- [2 Product Information](#)
- [3 Product Usage Instructions](#)
- [4 FAQ](#)
- [5 User Manual](#)
- [6 Cleaning and Maintenance](#)
- [7 Name of Parts](#)
- [8 Technical Parameter](#)
- [9 How to use the hand blender](#)
- [10 Documents / Resources](#)
 - [10.1 References](#)

OBERLY

OBERLY HB-106SDS 3 In 1 Hand Blender Multi Function Food Processor



Product Information

Specifications

- **Model:** HB-106SDS
- **Rated Voltage:** 110-120V~
- **Rated Power:** 500W
- **Rated Working Time:** 1min
- **Rotational Speed:** 1min
- **Rated Frequency:** Model Depose Patent Pending
- **Rated Interval Time:** 1min

Name of Parts

The hand blender consists of the following parts:

- Motor Unit
- Blender Bar
- Beaker
- Blade Guard

Product Usage Instructions

Important Caution

- Check each accessory carefully before using this unit.
- This appliance is not intended for use by persons (including children) with reduced physical, sensory or mental

capabilities, or lack of experience and knowledge unless they have been given supervision or instruction concerning the use of the appliance by a person responsible for their safety.

- Children should be supervised to ensure that they don't play with the appliance.
- Before using this unit, check the mains power voltage corresponds to the voltage shown on the marking plate.
- Always disconnect the blender from the supply if it is left unattended and before assembling, disassembling or cleaning.
- The water temperature should not be over 60°C when cleaning the unit.
- Don't allow children to use the blender without supervision.
- Don't switch the appliance on if it appears to be faulty in any way.
- For repairs, accessories or power cord replacement, contact your dealer or an authorized Service Center.
- Don't allow to immerse the base in the water for cleaning and it is forbidden to start the unit or press the control button with wet hands.
- Don't run this unit long time, otherwise, the inner parts will be damaged.
- Don't insert your finger or other objects into the machine and container when the motor is running.
- If the supply cord is damaged, it must be replaced by the manufacturer. Its service agent or similarly qualified persons in order to avoid a hazard.
- Only use this appliance and the provided accessories. Use the appliance for its intended purposes only. Don't use the appliance and the accessories for other purposes than described in this user instruction manual.
- Care shall be taken when handling the sharp cutting blades, emptying the container and during cleaning. Don't try to use the cutting blade or accessory other than the correct purpose to prevent dangers. Misuse or assembly of the cutting blade or accessory will cause dangers.

Cleaning and Maintenance

1. Before cleaning, unplug the appliance and detach the accessories.
2. Wipe the motor unit and the whisk coupling unit with a moist cloth, but do not immerse them in water. Other accessories can be put in the dishwasher or cleaned with water.
3. If food is not easily rinsed off the blade or whisk, place a drop of dish detergent in the mixing container with water. Plug the cord into the outlet. Immerse the blade end portion or whisk and operate the unit for about 10 seconds. Unplug, rinse under running water, and then dry.
4. When not in use for a long time, keep this appliance well ventilated in a dry place to prevent the motor from being affected by dampness.

FAQ

- **Q:** How should I clean the cutting blades?
- **A:** The cutting edges of the blades are very sharp, so cleaning them must be done carefully. Follow the cleaning instructions provided in the user manual.

User Manual

Important Caution

Check each accessory carefully before using this unit.

- This appliance is not intended for use by persons (including children) with reduced physical, sensory or mental capabilities, or lack of experience and knowledge unless they have been given supervision or instruction concerning the use of the appliance by a person responsible for their safety.
- Children should be supervised to ensure that they don't play with the appliance.
- Before using this unit, check the mains power voltage corresponds to the voltage shown on the marking plate.
- Always disconnect the blender from the supply if it is left unattended and before assembling, disassembling or cleaning.
- The water temperature should not be over 60°C when cleaning the unit.
- Don't allow children to use the blender without supervision
- Don't switch the appliance on if it appears to be faulty in any way.
- For repairs, accessories or power cord replacement, contact your dealer or an authorized Service Center.
- Don't allow to immerse the base in the water for cleaning and it is forbidden to start the unit or press the control button with wet hands.
- Don't run this unit long time, otherwise, the inner parts will be damaged.
- Don't insert your finger or other objects into the machine and container when the motor is running.
- If the supply cord is damaged, it must be replaced by the manufacturer. Its service agent or similarly qualified persons in order to avoid a hazard.
- Only use this appliance and the provided accessories. Use the appliance for its intended purposes only. Don't use the appliance and the accessories for other purpose than those described in this user instruction manual.
- Care shall be taken when handling the sharp cutting blades, emptying the container and during cleaning. Don't try to use the cutting blade or accessory other than the correct purpose to prevent dangers. Misuse or assembling the cutting blade or accessory will cause dangers.

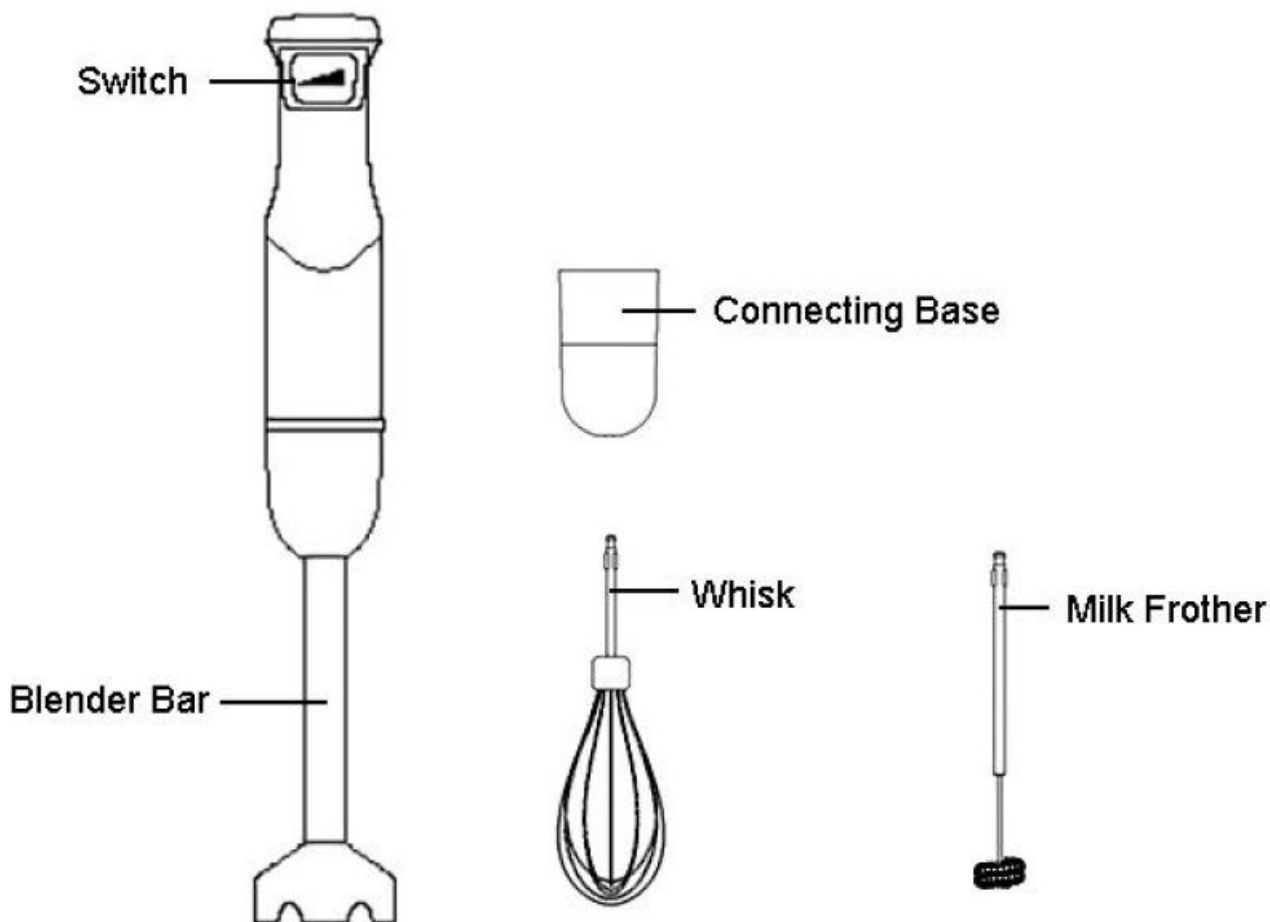
Cleaning and Maintenance

1. Before cleaning, unplug the appliance and detach the accessories.
2. Wipe the motor unit, and the whisk coupling unit with a moist cloth, don't immerse them in water. Other accessories can put the dishwasher or the water clean.
3. If food is not easily rinsed off the blade or whisk, place a drop of dish detergent in the mixing container with water. Plug the cord into the outlet. Immerse the blade end portion or whisk and operate the unit for about 10 seconds. Unplug, rinse under running water, and then dry.
4. When will not be used for a long time, keep this appliance well-ventilated at the aridity of place to prevent the motor of the appliance from being affected by dampness.

Caution

The cutting edges of the blades are very sharp, so cleaning it must be done carefully.

Name of Parts



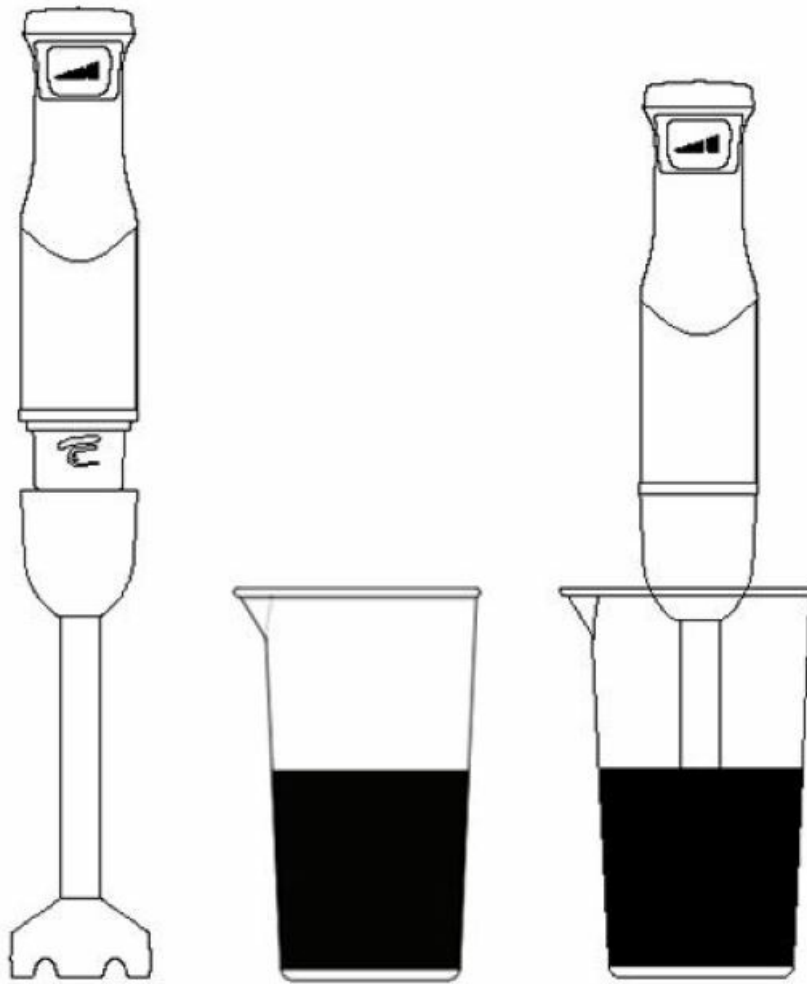
Technical Parameter

Model NO.	HB-106SDS	Rotational Speed	15000RPM±10%
Rated Voltage	110-120V~	Rated Frequency	60Hz
Rated Power	500W	Model Depose Patent Pending	
Rated Working Time	≤1min	Rated Interval Time	≥1min

How to use the hand blender

The hand blender is perfectly suited for preparing dips, sauces, mayonnaise and baby food as well as for mixing and milkshakes.

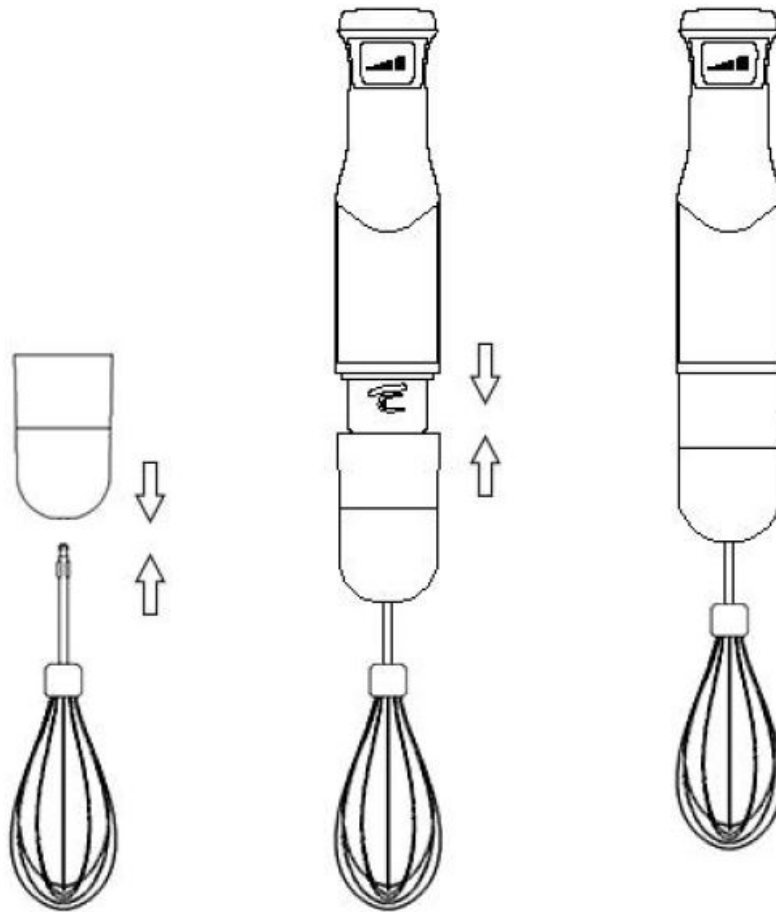
1. Insert the blender bar into the motor unit and turn clockwise to lock it into the motor unit.
2. Put ingredients in the beaker. To prevent splattering immerse the blade guard completely in the ingredients.
You can use the hand blender in the beaker and just as well in any other vessel.
3. Switch the appliance on by pressing the switch.
4. Blend the ingredients by moving the appliance slowly up down and in circles.



How to use the whisk

The whisk is intended for whipping cream, beating egg whites and mixing sponges and Ready-mix desserts.

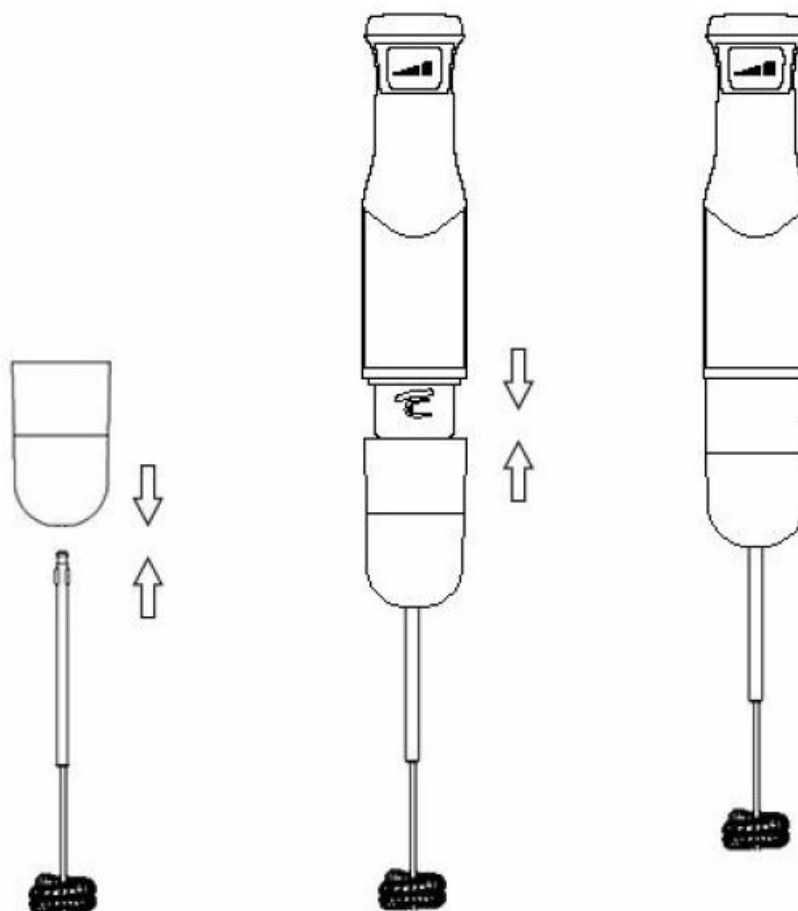
1. Insert the whisk into the connecting base coupling unit strongly.
2. Connect the coupling unit to the motor unit, installation reference "How to use the hand blender".
3. Press the switch to activate the hand blender, and loosen the switch after Approximately 30 seconds to prevent ingredients from splashing.



How to use the milk frother

The milk frother is intended for whipping cream and froth milk., froth all types of milk, create a vast array of professional-quality hot and cold foam and drinks such as cappuccinos, lattes, hot chocolate, milkshakes, cocktails (and so on).

1. Insert the milk frother into the connecting base coupling unit strongly.
2. Connect the coupling unit to the motor unit, installation reference "How to use the hand blender".
3. Press the switch to activate the hand blender, and loosen the switch after Approximately 30 seconds to prevent ingredients from splashing.



Documents / Resources



[OBERLY HB-106SDS 3 In 1 Hand Blender Multi Function Food Processor](#) [pdf] User Manual

HB-106SDS 3 In 1 Hand Blender Multi Function Food Processor, HB-106SDS, 3 In 1 Hand Blender Multi Function Food Processor, Blender Multi Function Food Processor, Multi Function Food Processor, Function Food Processor, Food Processor, Processor

References

- [User Manual](#)