



OBDII APPRO2 Key Programmer Mileage Correction Tool Instruction Manual

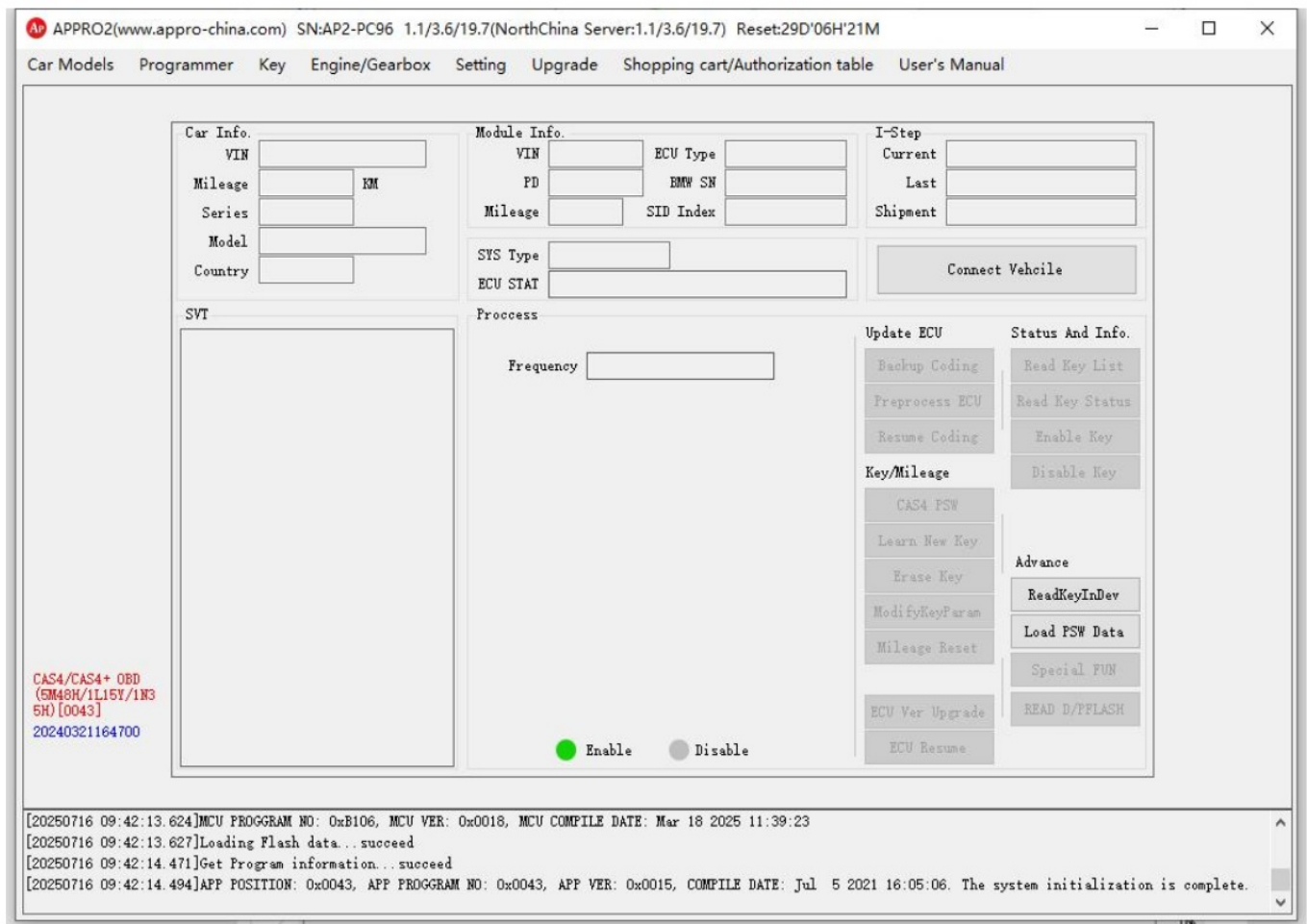
APPRO CAS4/CAS4 + 9S12XEP100 OBD Operating Instructions

2019-07-20 vs Version

At present, APPRO equipment has been upgraded to support OBD matching CAS4 model function, which supports CPU SM48H/1N35H models cover the latest CAS4 models from July 2010 to 2019.

Since the release of this function, it has been upgraded to the fifth edition after rapid iteration, providing many thoughtful and convenient functions.

After the software starts, look at the following two locations to determine the software and firmware version.

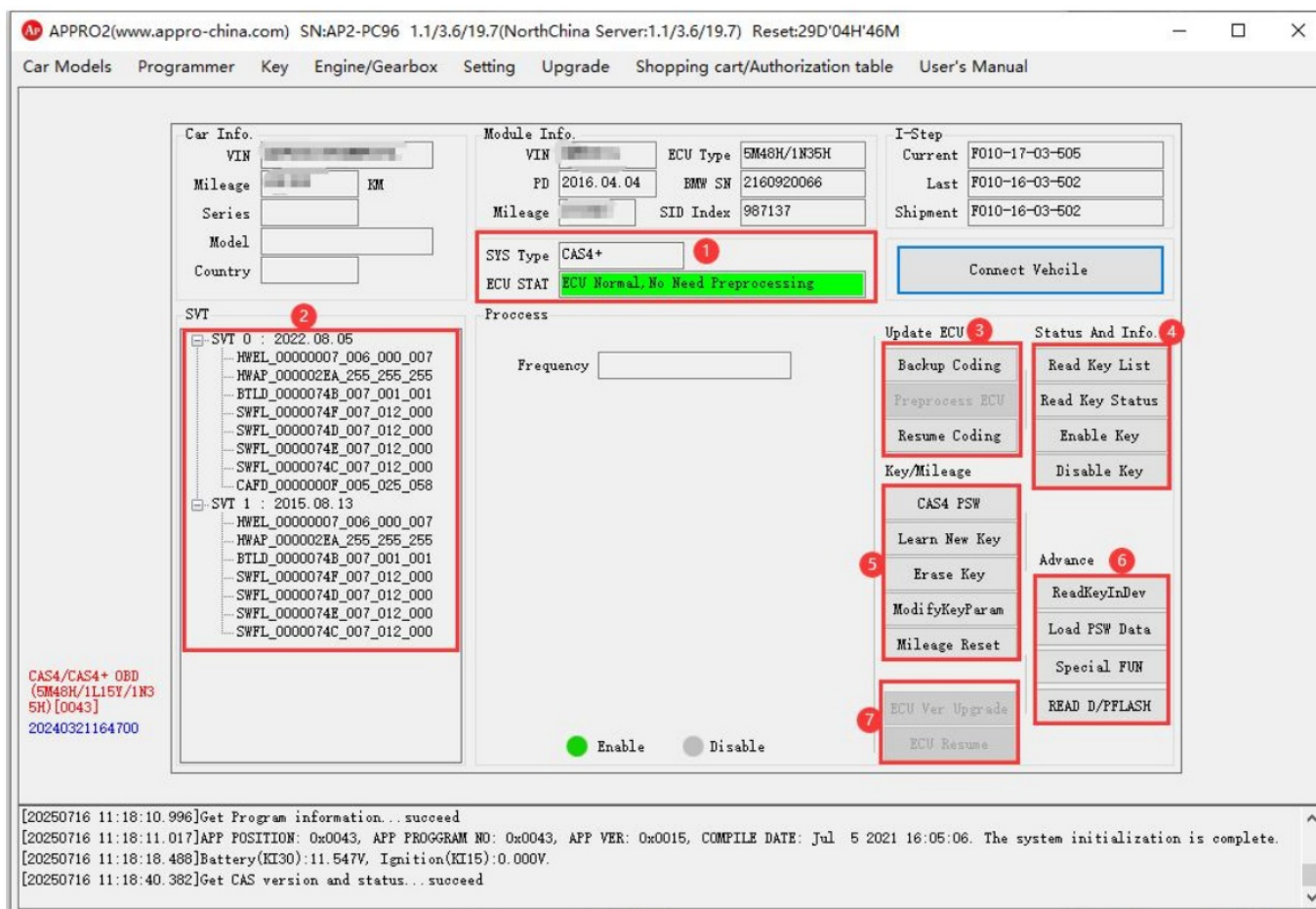


After V04, the function of “loading password” is added, which allows the user to directly load or input the CAS password, and then the key can be directly generated by OBD or programmer.

Contents [[hide](#)]

- 1 A Description of Software Interface Display
- 2 Module Pretreatment Operation Step
- 3 Matching Key Operation Steps
- 4 Operation Steps for Loading Password
 - 4.1 Password loading: OBD key generation step
 - 4.2 Loading the Password: Programmer Generates the Key Step
- 5 Documents / Resources
 - 5.1 References

A Description of Software Interface Display



Description of main operation areas of the software:

① Status Information Area: Type and Status of the Current Vehicle

The System Types:

Displayed as CAS4 indicates that the current system is of EWS4 type (DMEISN is not required for all keys lost);

Displayed as CAS4 + indicates that the current system is of EWS5 type (DMEISN is required for all keys lost);

Status:

Common statuses are as follows.

Status: ECU正常, 无需处理模块	CAS has not been preprocessed.	Perform the Module Programming operation
Status: ECU版本需先进行单编升级	CAS version needs to be upgraded	Carry out "ECU version update" operation
Status: ECU正常, 无需预处理模块	CAS has been preprocessed.	Key can be matched after "Get Password".
Status: 当前系统版本功能不支持类型	1L15Y or FEM/BDC	This function does not support this type
Status: ECU数据异常	CAS programming anomaly	Perform Module Programming again or contact Technical Support

② Vehicle Version Information Table: the Version Missing Status Can Be Quickly Located When the Vehicle Is Abnormal

③ Module programming process:

The vehicle status can be changed from “normal, preconditioning module required” to “normal, no preconditioning module required”. It can also be used as a simple data repair function to handle some non-serious programming repair operations.

④ Key Information Acquisition:

As long as the vehicle is not in an abnormal state (normal vehicle is not preconditioned or has been preconditioned), the key list, key status, and disable key activation of the vehicle can be obtained through this function.

⑤ Post-Operation Function of Pre-Processing Module:

The functions in this area can only be operated after the module preprocessing is completed, such as key matching, key deletion, key information modification (forced activation), etc. (As of V5 version: the mileage repair function is still in the testing stage)

⑥ Other Functions:

Host identification key: identify the key information through the equipment coil (support to modify the mileage in the key) and load the password:

When the CAS4 system fails to match and the CAS enters the matching state, the AP will prompt the current

CAS may not be a factory error, in which case it is necessary to rematch the key using the OBD programming key within this function. When OBD reads the key list and the frequency information displays unknown, the key (frequency) cannot be matched by OBD

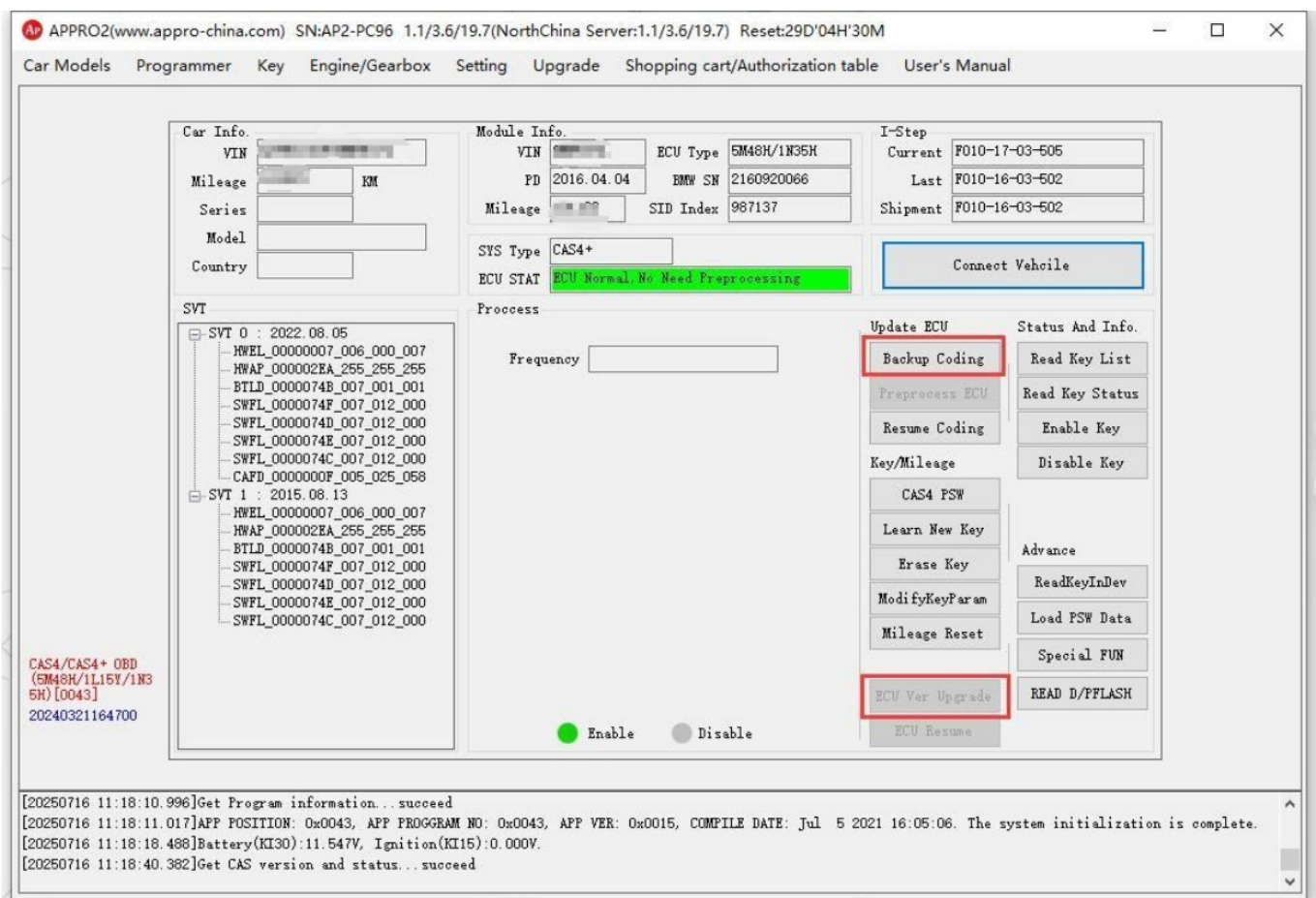
The rate cannot be matched), the vehicle can be written and started through the programmer generating key function in this function.

⑦ Version Updates and Fixes:

When the vehicle is in the state of ECU version and needs to be upgraded separately, the ECU version update function can be used to upgrade the vehicle version to the version that can be preprocessed (update the version that is not supported before 2016 to the supported version).

Module Pretreatment Operation Step

Step 1: Link the Vehicle: Link the OBD Line to the Vehicle and Click the “Connect Vehicle” Button.

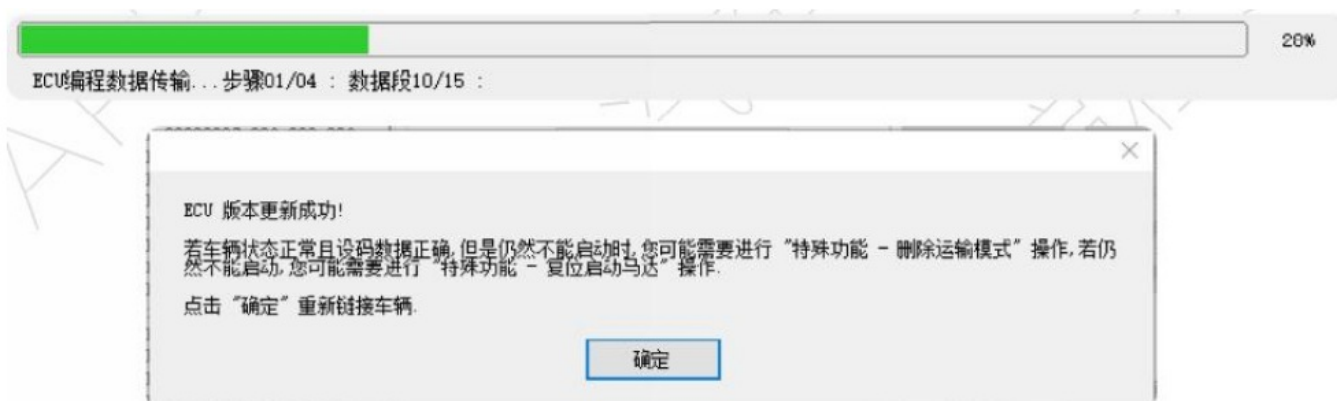


Step 2: Backup coding: After the CAS version and status are successfully obtained, we perform the backup Coding operation.

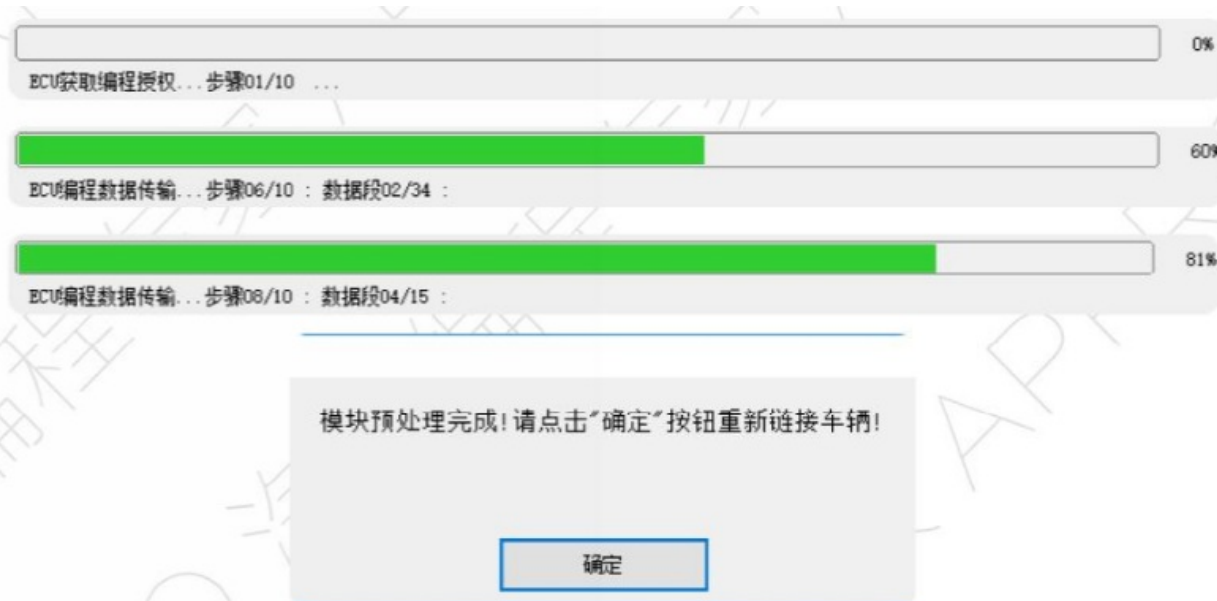
Step 3: Observe the System Status: If the Status Is “LCU Version 4”, Then Use the U Version Update Function to Process the ECU Version as the

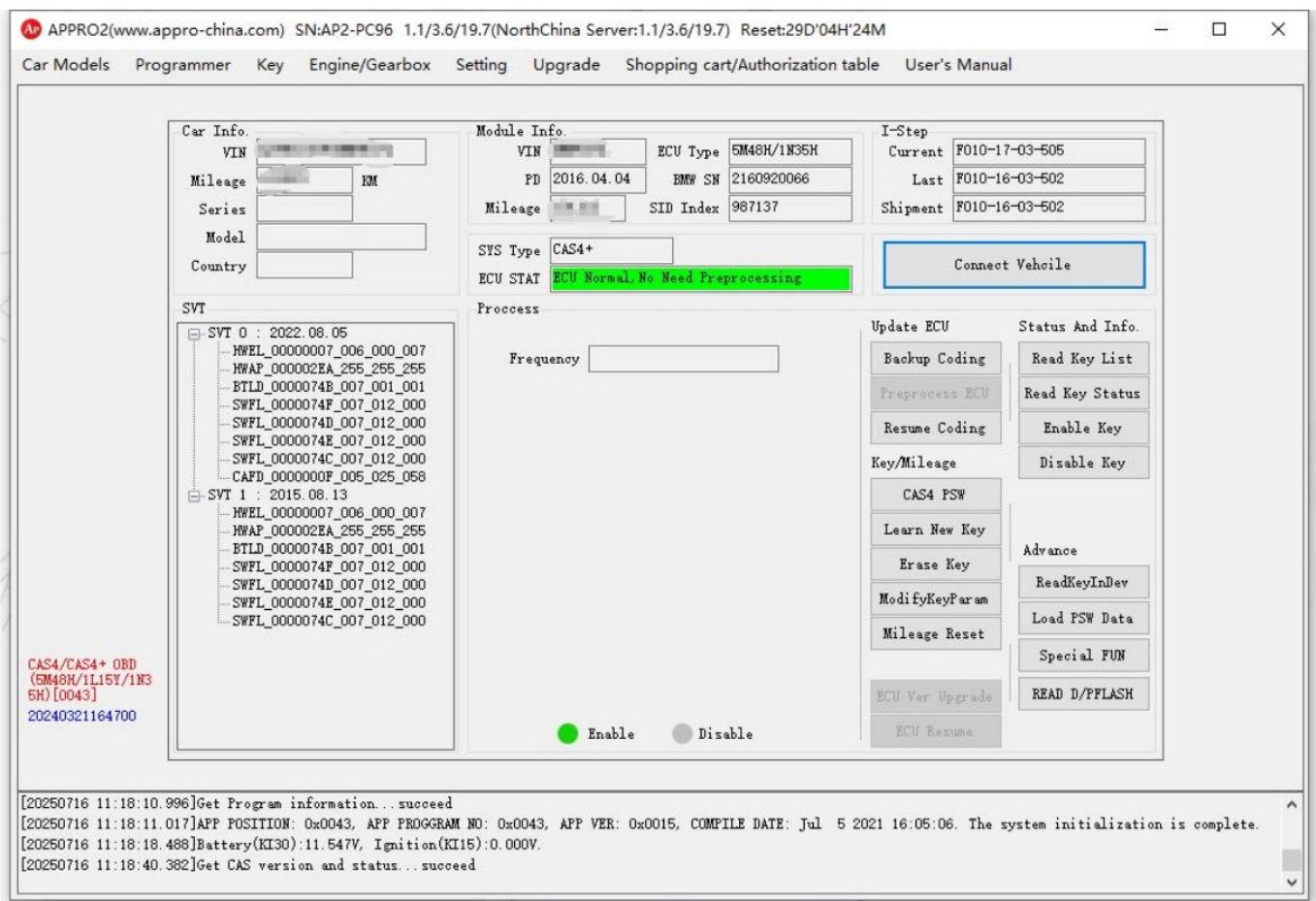
Supported Version. If the Status Is “ECU Is Normal, and the Beaver Tax Block Needs to Be Disposed in Advance”, Skip to the Next Step Directly.

ECU version update steps: Click the ECU version update button, read the relevant prompts, and then wait for the version update to be completed (about 8 minutes).



Step 4: Preprocess module: This step will pretreat and program the CAS for about 10 ~ 15 minutes, and the unprocessed CAS module cannot obtain the key password through OBD. If the ECU version is updated in the previous step, it is recommended to back up the code setting data first.





Re-connect the vehicle, the status has been “ECU is normal, no pre-processing module is required”, and the password can be obtained.

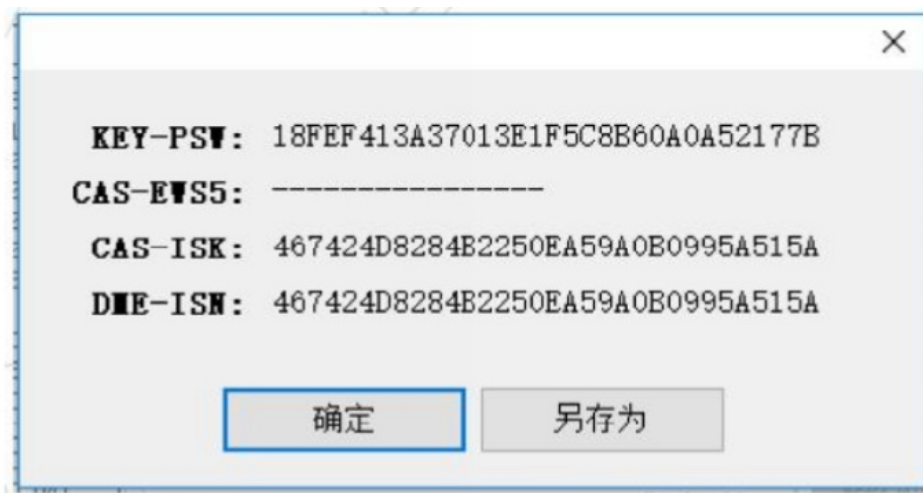
Matching Key Operation Steps

Step 1: Obtain the CAS Password: After the Module Preprocessing Is Completed, It Is Recommended to Back up the Vehicle Password Information at the First Time.

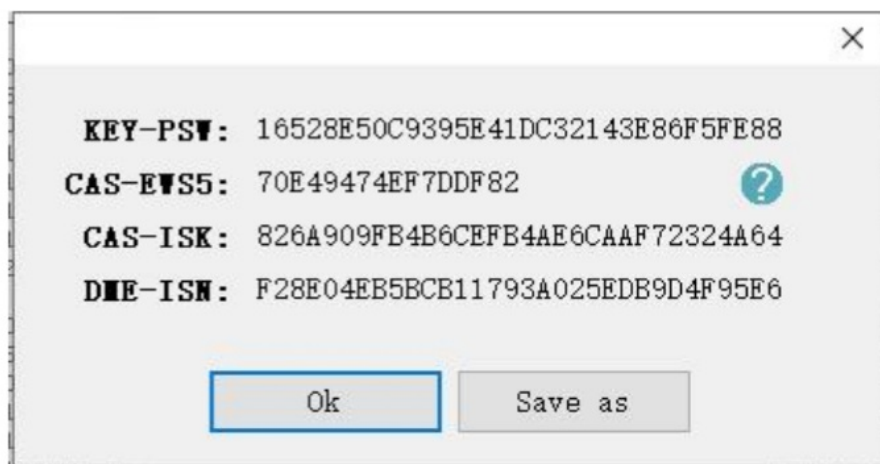
When the system type is CAS4 (i.e. EWS4), the password can be obtained directly without the original vehicle key or engine ISN;

The system type is CAS4 + (i.e. EWS5 type), and the password can only be obtained through the original vehicle key or engine ISN.

For CAS4 (EWS) system, there is no EWSSKEY data, so the password obtained is as follows:



For CA-S4 + _ (, EWS5), the password obtained is as follows:



Wherein the CAS4 system does not have the EWSSKEY field and the CAS-ISK is the same as the DME-ISH; The EWSSKEY field exists in the CAS4 + system.

If you have only one disabled key, you can use the mandatory activation function pioneered by APPRO equipment in the industry. After the key is activated, you can obtain the vehicle password through this key. The force enable function bit is in the key information button.

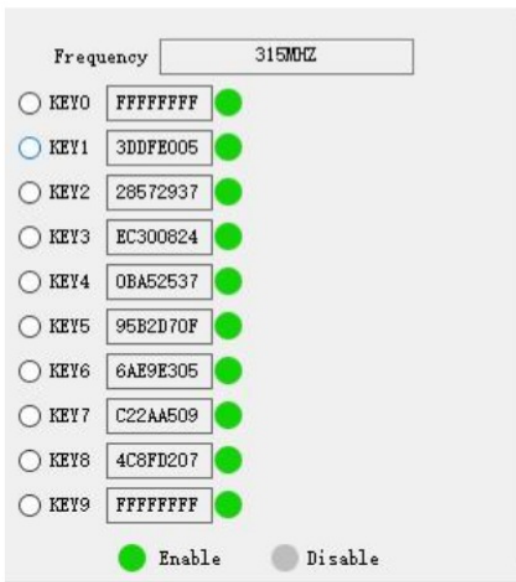
After the Password Is Obtained Successfully, Please Save the Password File for Emergency!!!

Step 2: generate the dealer key: after the password is obtained successfully, you can select the blank position to generate a new key.

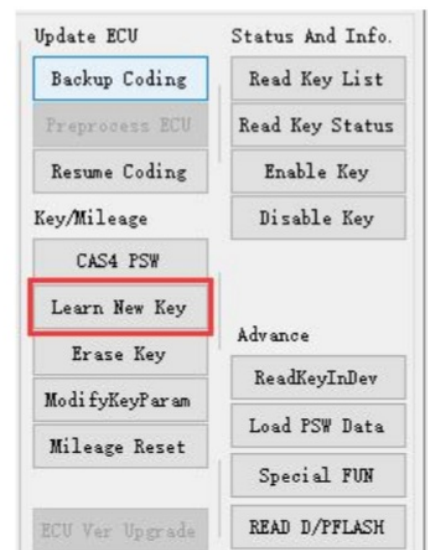
Click “Key information” button to obtain the key list of the original vehicle and the frequency information of the vehicle. We need to prepare an empty key with the same frequency. And select a blank key position.

Note: After the OBD generates the key, it will not lock the key, which means that the key can be used repeatedly and can be placed in another position without unlocking.

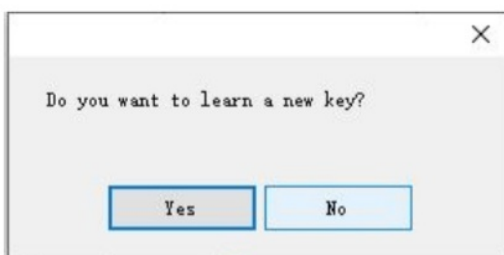
Or re-generate the dealer key on another vehicle. However, before re-generation of the same vehicle, it must be ensured that there is no key ID of this key in the current key list (that is, the ID of the key position that has been generated must be deleted before re-generation).



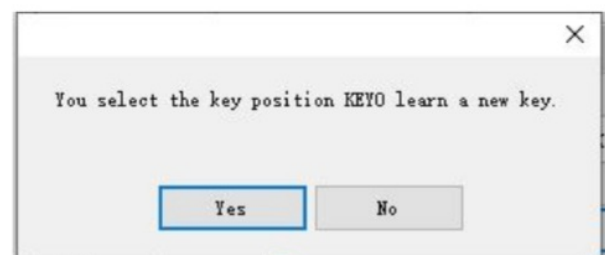
① Select a blank key position.



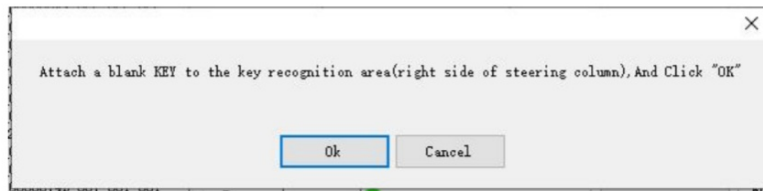
② Click Generate New Key.



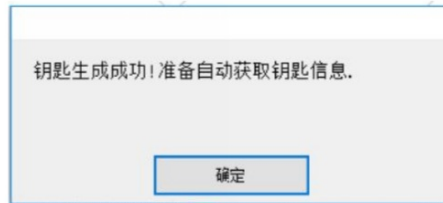
③ Confirm generation.



④ Confirm position.



⑤ Hold the key blank close to the key identification area of the steering column and click the OK button



⑥ Wait for a moment, the generation is successful. At this point, the key list is retrieved and the new key ID has been added.

At This Point, the Operation of Generating a New Dealer Key Is Completed!

Caution:

After the new key is successfully generated through OBD, the new key will not be locked, and it can be generated with the key of other vehicles without unlocking.

Operation Steps for Loading Password

The Loading Password Function Allows the User to Generate Keys Directly from the OBD Without the Need to Pre-Process the CAS Module. As Long as CAS Can Work Normally, the Corresponding Key Password Can Be Loaded and the Key Can Be Generated Directly by OBD.

It also allows the user to load the key code and directly generate the dealer's key through the programmer without operation on the vehicle (it must be ensured that the generated position is a blank position on the vehicle, otherwise the key cannot learn automatically; at the same time, it is necessary to know the remote control code information of the vehicle).

KEY-PSW: The Vehicle Password Generates the Necessary Data for the New Key;

CAS-EWS5: CAS4 + (EWS5 system) generates necessary data for new keys, which is easy to be lost, so please keep it properly;

CAS-ISK: The Vehicle Password Generates the Necessary Data for the New Key;

DME-ISBN: CAS4 + (EWS5 system) related data can be used for data repair and engine-related function processing;

Frame No.: The Programmer Generates the Necessary Data for the Dealer Key;

System Type: indicates whether the current system is CAS4 (EWS4) or CAS4 + (EWS5) (required item) and must be selected correctly; Load Password File: the password file saved in the password acquisition step can be loaded;

Obtaining the Key List by OBD: the Latest Key List Information of the Current Vehicle Can Be Obtained Directly Through OBD; OBD Key Generation: After the Password Information Is Confirmed to Be Correct, a New Key Is Generated Through OBD;

Programmer key generation: a new dealer key is generated directly through the programmer, which does not need to connect the vehicle, but needs to know the remote control code;

Password loading: OBD key generation step

CAS Can Use the Current Function to Generate the OBD Key Regardless of Whether It Has Been Preprocessed or Not, and the Key Will Not Be Locked After Generation.

<input type="radio"/> KEY0	FFFFFFF	<input type="radio"/> KEY5	9000000
<input type="radio"/> KEY1	3000000	<input type="radio"/> KEY6	6000000
<input type="radio"/> KEY2	2800000	<input type="radio"/> KEY7	C200000
<input type="radio"/> KEY3	E000000	<input type="radio"/> KEY8	4000000
<input type="radio"/> KEY4	0B00000	<input type="radio"/> KEY9	FFFFFFF

☒ 启用
 ☐ 禁用

①Select the Blank Key Position (ensure That the Current Position of the Noon Car Is Blank!)

Check carefully, Make sure the input PASSWORD data correct, error password will make ALL working key invalid!

the input cas VIN is : [REDACTED]

Current select System Type is : CAS4+

the input cas Key Password is : 16528E50 [REDACTED]

the input cas Ews5Password is : 70E49 [REDACTED]

the input cas Isk Password is : 826A9091 [REDACTED]

the input dme Isn Password is : F28E04EB [REDACTED]

Current select KeyPosition is : KEY0

Ok Cancel

② Check the Password Information Carefully. If the Password of the OBD Generation Mode Is Wrong, All Keys will Be Invalid

Ready to make a new Key by OBD, Attach a blank KEY to the key recognition area(right side of steering column), And Click "OK".

Ok Cancel

③Put the New Key Close to the Vehicle Induction Coil to Ensure That the Current Key ID Is Not in the Vehicle Key List.

钥匙生成成功! 准备自动获取钥匙信息.

确定

④Wait a moment, the generation is successful!

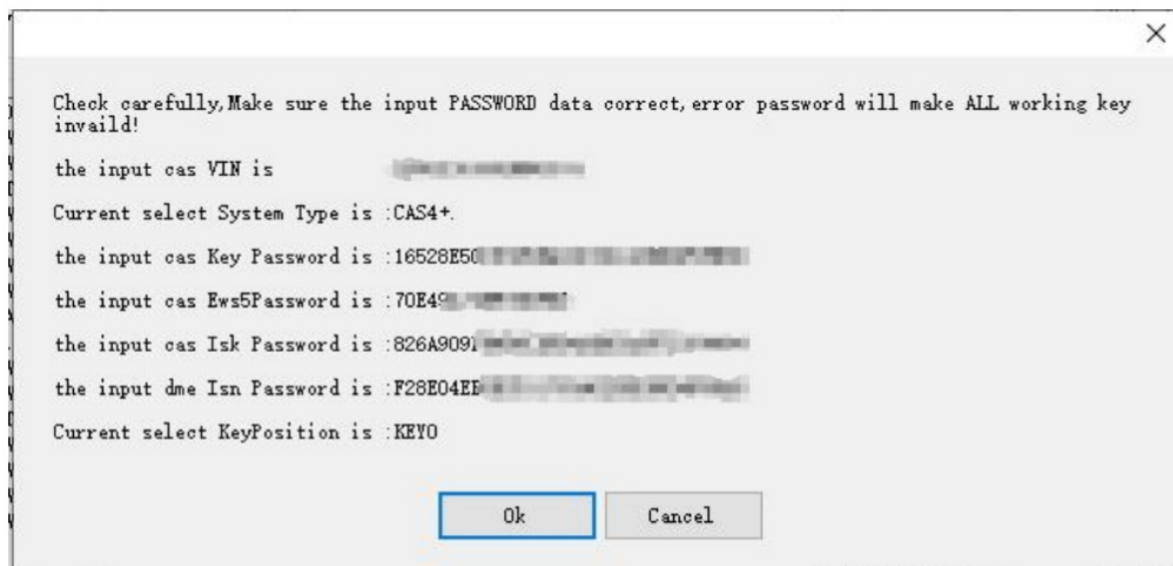
Loading the Password: Programmer Generates the Key Step

Through the password writing start function, the new key will be locked after successful generation; A key position that is blank on the current vehicle must be selected;

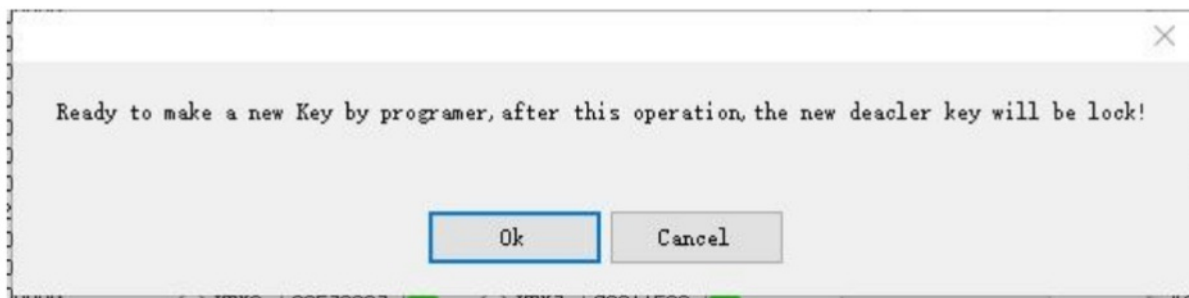
It is necessary to know the remote control code information of the current vehicle (which can be obtained by reading the current normal remote control key);



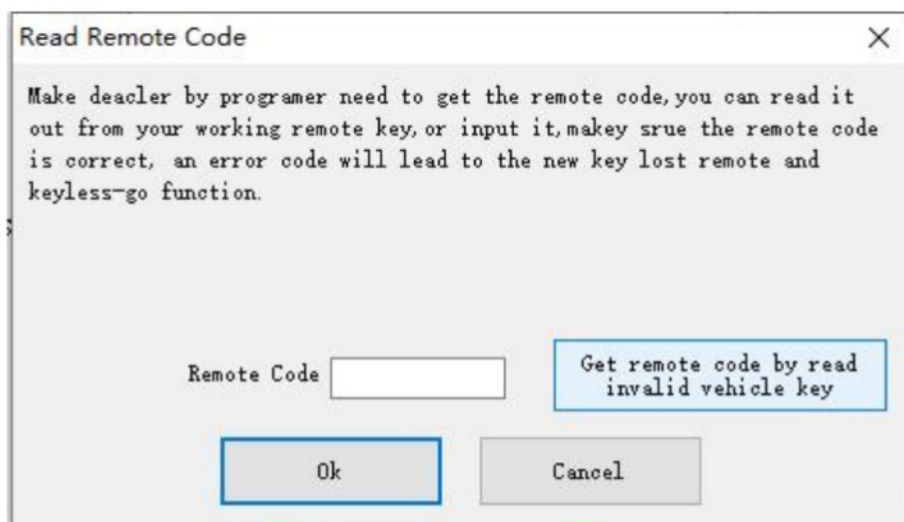
① Select the blank key position (ensure that the current position of the noon car is blank!)



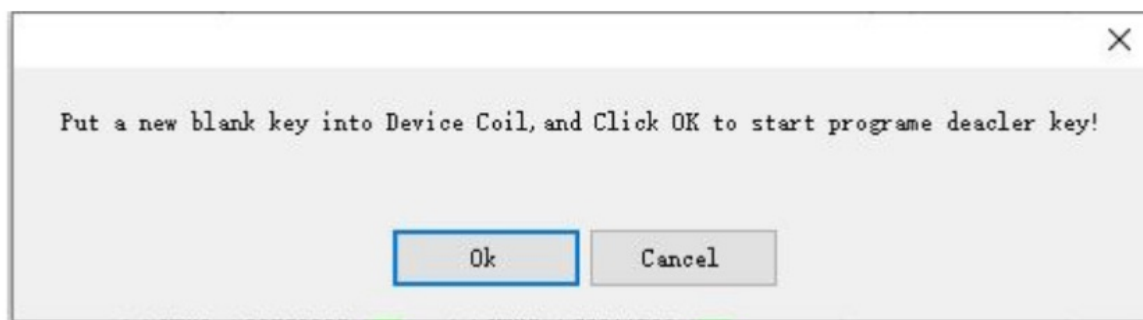
② Check the password information, the wrong password will not start the car, and the key will be locked



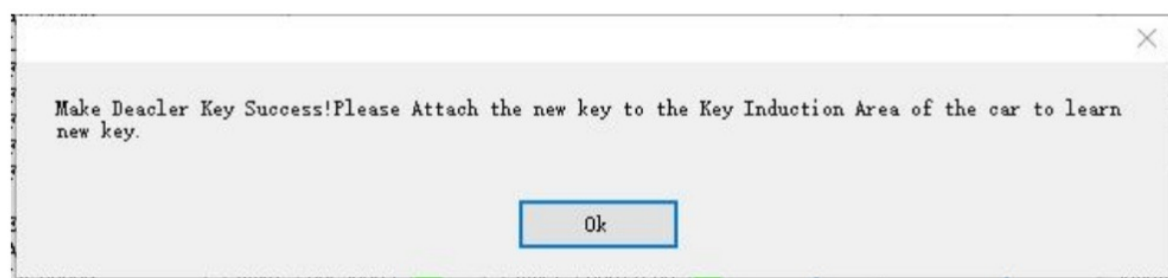
③ Confirm information, next step



④ Enter the remote control code or read the current normal remote control key.




⑤ Put the blank key close to the induction coil and confirm the key information to start generating.



⑥ Wait a moment, the generation is successful! Put the key close to the induction coil for automatic learning.

The Function of Loading the Password to Generate a New Key Not Only Provides a Variety of Ways to Generate the Key, but Also Can Be Used as an Emergency Rescue Means When the Vehicle Is Abnormal Due to an Accident in the Process of Generating the Key.

Documents / Resources

	OBDII APPRO2 Key Programmer Mileage Correction Tool [pdf] Instruction Manual APPRO2, 25071617526591616164, CB46CFC9-E72F-4C34-B700-4E0E E628C6B4, APPRO2 Key Programmer Mileage Correction Tool, APPRO2 , Key Programmer Mileage Correction Tool, Mileage Correction Tool, Correction Tool
---	---

References

- [User Manual](#)

📁 OBDII
🔍 25071617526591616164, APPRO2, APPRO2 Key Programmer Mileage Correction Tool, CB46CFC9-E72F-4C34-B700-4E0EE628C6B4, Correction Tool, Key Programmer Mileage Correction Tool, Mileage Correction Tool, OBDII

Leave a comment

Your email address will not be published. Required fields are marked *

Comment *

Name

Email

Website

☐ Save my name, email, and website in this browser for the next time I comment.

Post Comment

Search:

e.g. whirlpool wrf535swhz

Search

[Manuals+](#) | [Upload](#) | [Deep Search](#) | [Privacy Policy](#) | [@manuals.plus](#) | [YouTube](#)

This website is an independent publication and is neither affiliated with nor endorsed by any of the trademark owners. The "Bluetooth®" word mark and logos are registered trademarks owned by Bluetooth SIG, Inc. The "Wi-Fi®" word mark and logos are registered trademarks owned by the Wi-Fi Alliance. Any use of these marks on this website does not imply any affiliation with or endorsement.