

OasisSpace OS-CTS-001 Cold Therapy Machine with 2 Flexible Pads and Timer



# OasisSpace OS-CTS-001 Cold Therapy Machine with 2 Flexible Pads and Timer User Manual

[Home](#) » [OasisSpace](#) » OasisSpace OS-CTS-001 Cold Therapy Machine with 2 Flexible Pads and Timer User Manual 

## Contents

- [1 OasisSpace OS-CTS-001 Cold Therapy Machine with 2 Flexible Pads and Timer](#)
- [2 Parts List](#)
- [3 Installation Instructions](#)
- [4 Menu setting](#)
- [5 Operation Instruction](#)
- [6 Maintenance](#)
- [7 Additional Precautions](#)
- [8 Documents / Resources](#)
  - [8.1 References](#)






OasisSpace OS-CTS-001 Cold Therapy Machine with 2 Flexible Pads and Timer







Thank you for choosing OasisSpace Cold Therapy Machine !

We have a professional Customer Service Support Team. Please feel free to contact us when you have any suggestions on our products or when you need any help. We will always be here for you and be responsible for our products.

### Parts List

Number	Picture	Name	Quantity
A		Bucket	1
B		Top Lid	1
C		Hose	1

D		Knee Pad	1
E		Universal Pad	4
F		Adapter Power	1
G		3 Elastic Straps	2
H		Spare sealing ring	4

## Installation Instructions

### Before Assembly

1. Please check the Parts List carefully and remove contents from carton. And then verify that all the parts are present. When missing parts or some parts are damaged, please contact us immediately.
2. We provide replacement parts to our customers if you need any replacement parts. Please provide the order number, part number, quantity, and pictures or video clips (if applicable) so that you can get what you need as soon as possible.

### Assembly Instructions:

**Step 1.** Add cold water and ice to fill till-the fill line inside the bucket.

Then place the lid on the bucket, making sure the lip aligns into the groove. Then press front of the lid down to close and secure.



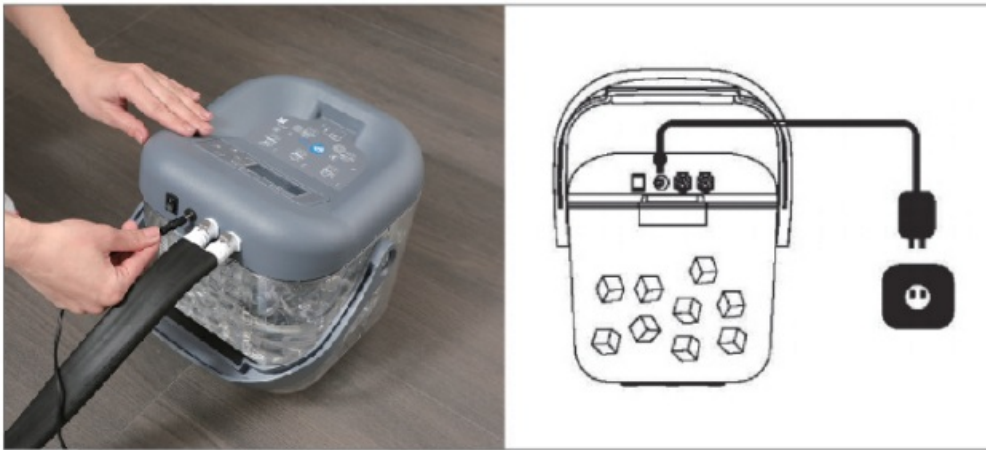
**Step 2.** Connect the hose to the interface on the top lid. To ensure a reliable connection, “snap” or “click” hoses together into place so that the fit is tight and snug.



**Step 3.** Select the required pad and connect it to the hose.



**Step 4:** Insert the adapter power into the plug and connect it to the device power socket.



**Step 5:** Place the Knee Pad and secure it with Elastic Straps.









## Menu setting

1. Connect the power adaptor to the device. Power on the device.

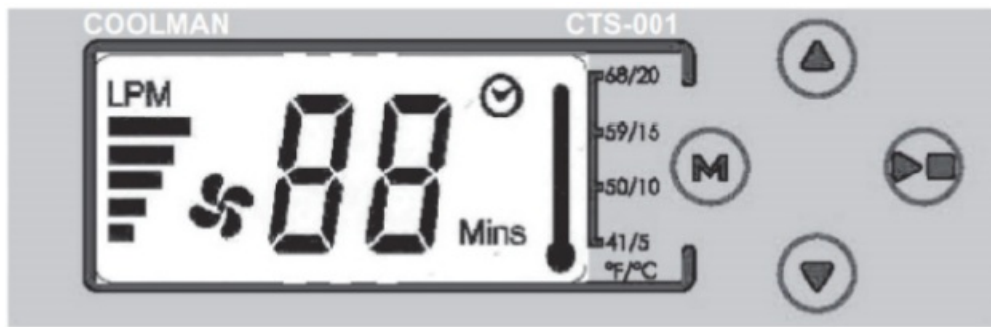
The LCD screen will light up and a short beep will indicate that the device is ready for setup and use.






2. To select or modify device setting, press and hold the “Mode” (M) button (  ) for two seconds.
  - Flow Rate setting: when the “LPM” tag is flashing on the screen, press the “Up” or “Down” (   ) arrow button to adjust the flow rate of the treatment.
  - Treatment Time setting: Pressing the “Mode”(M) (  ) button again will transition the setting screen from Flow Rate setting to Treatment. When the “Mins” tag is flashing, press the “Up” or “Down” (   )



arrow button to adjust the treatment time desired.



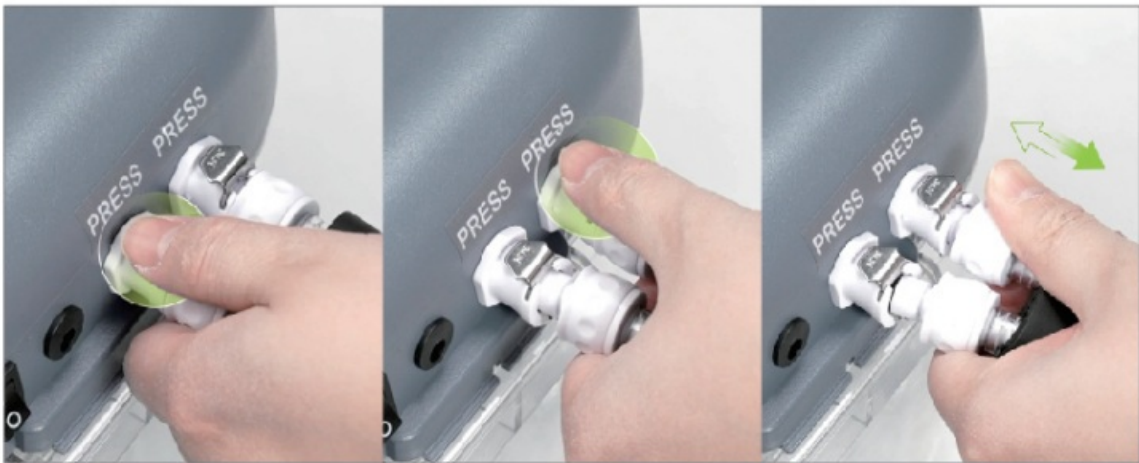
## Operation Instruction

1. Press the “Mode”(M)  button again to exit device setting. You can abort device setting at any time during the operation by pressing the “Start/Pause”  button.
2. In standby mode, press the “Start/Pause”  button to start the pump treatment. The LCD screen will display the flow rate selected and the current temperature estimate inside the ice bucket. The treatment timer count down is also shown on the screen.



## How to remove hoses or pads correctly

Press the lock first, then pull out the hose. (Note: Do not pull it directly, as it may cause damage to the hose joint)



### Using videos

If you need more detailed and clear instructions, please scan the QR code to watch the usage and installation video on Amazon.



### Maintenance

1. Always keep the rubber discs clear of oil and dust.
2. Clean the rubber discs with standard household cleaning agents.
3. Never expose the rubber discs to sunlight for long periods otherwise they will quickly lose their elasticity.
4. Check the rubber discs for possible deterioration. If the suction cups show damage, replace immediately.
5. Please check whether screws and components are loose regularly. If they are loose, tighten them in time.

### Additional Precautions

1. Inspect all parts for shipping damage before assembly. If there is shipping damage – DO NOT USE. Contact dealer/carrier for further instructions.
2. Make certain that the height adjusting snap buttons fully protrude through the same respective hole of each leg extension. This will ensure that the leg extensions are securely locked in position and an even height is achieved.
3. Ensure All thumb screws are tightened.
4. Check the rubber tips and wheels on the leg extensions for rips, wear or if they are missing. Immediately replace any or all if any of these imperfections exist.
5. All four leg extensions MUST touch the floor simultaneously at all times.

### One Year Warranty

OasisSpace brand product is warranted to be free of defects in materials and workmanship for One Year for the original purchaser.

This device was built to exacting standards and carefully inspected prior to shipment. This One Year Warranty is an expression of our confidence in the materials and workmanship of our products and our assurance to the consumer of dependable service.

In the event of a defect covered by this warranty, we will, at our option, repair or replace the device. This warranty does not cover device failure due to owner misuse or negligence, or normal wear and tear.


The warranty does not extend to non-durable components, such as rubber accessories, casters, and grips, which are subject to normal wear and need periodic replacement.

If you have a question about OasisSpace device or this warranty, please contact us.

Always accompany and care for you Health Care Brand

---

## Documents / Resources

	<p><a href="#">OasisSpace OS-CTS-001 Cold Therapy Machine with 2 Flexible Pads and Timer</a> [pdf] User Manual</p> <p>OS-CTS-001 Cold Therapy Machine with 2 Flexible Pads and Timer, OS-CTS-001, Cold Therapy Machine with 2 Flexible Pads and Timer, 2 Flexible Pads and Timer, Pads and Timer</p>
---	--

## References

- [User Manual](#)

[Manuals+.](#) [Privacy Policy](#)

This website is an independent publication and is neither affiliated with nor endorsed by any of the trademark owners. The "Bluetooth®" word mark and logos are registered trademarks owned by Bluetooth SIG, Inc. The "Wi-Fi®" word mark and logos are registered trademarks owned by the Wi-Fi Alliance. Any use of these marks on this website does not imply any affiliation with or endorsement.