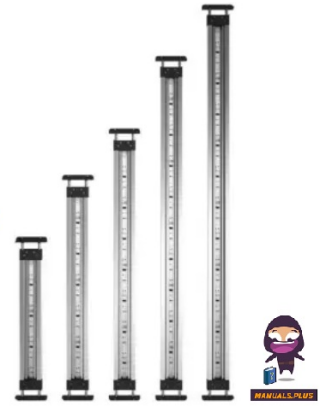


# Oase

## oase 45 Motion Control LED Set



## oase 45 Motion Control LED Set Instruction Manual

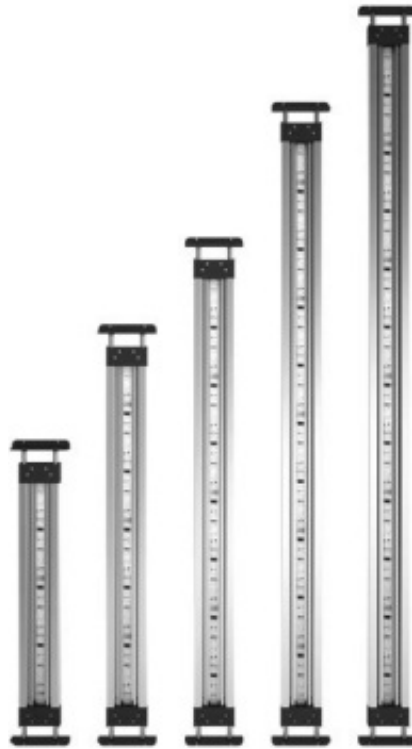
[Home](#) » [Oase](#) » oase 45 Motion Control LED Set Instruction Manual 

### Contents

- 1 oase 45 Motion Control LED Set
- 2 Specifications
- 3 FAQ
- 4 Safety information
- 5 Product Description
- 6 Accessories
- 7 Description of product-specific symbols
- 8 Installation
- 9 Connection
- 10 Malfunction remedy
- 11 Cleaning
- 12 Technical data
- 13 Disposal
- 14 Documents / Resources
  - 14.1 References

# Oase

oase 45 Motion Control LED Set



## Specifications

- Connection voltage: 24 V DC
- Luminous flux of all LEDs:
  - 45: 1020 lm
  - 65: 1670 lm
  - 80: 2370 lm
  - 100: 2980 lm
  - 120: 3760 lm
- Power: 30W (45), 47W (65), 67W (80), 83W (100), 105W (120)
- Protection: IP68
- Length: 440mm (45), 610mm (65), 640mm (80), 830mm (100), 1040mm (120)
- Weight: 0.58kg (45), 0.77kg (65), 0.96kg (80), 1.16kg (100), 1.44kg (120)

## FAQ

### **Q: Can the LED light source be replaced?**

A: No, the light source (LED) in the LED spotlight cannot be replaced.

### **Q: What is the protection rating of the LED lamp?**

A: The LED lamp has an IP68 protection rating, making it dust-tight and suitable for permanent immersion in water.

### **Q: Is it safe to operate the LED lamp with safety-low voltage?**

A: Yes, only operate the LED lamp with safety-low voltage for safe operation.

## **WARNING**

Original manual. This manual belongs with the unit and must always be passed on together with the unit.

## **Safety information**

### **Correct electrical installation**

- Only plug the unit into a correctly installed outlet.
- Only connect the unit if the electrical data of the unit and the power supply correspond. The unit data is to be found on the unit type plate, on the packaging or in this manual.
- Route lines in such a way that they are protected from damage and do not present a tripping hazard.
- Extension cables and power distributors (e.g. outlet strips) must be suitable for outdoor use (splash-proof).
- Protect the plug connection from moisture.

### **Safe operation**

- Disconnect all electrical devices in the water from the power supply before reaching into the water. Otherwise there is a risk of severe injuries or death by electrocution.
- Always unplug the unit before working on it.
- Do not use the unit, if electrical lines or the housing are damaged.
- Never pull on electric cables. In particular, never carry units on their cables.
- If a power connection cable is damaged, have it immediately replaced by OASE, an authorised customer service or a qualified electrician to prevent electric shock.
- Do not look directly into the light source.
- This unit can be used by children aged 3 and above and by persons with reduced physical, sensory or mental capabilities or lack of experience and knowledge if they are supervised or have been instructed on how to use the unit in a safe way and they understand the hazards involved. Do not allow children to play with the unit. Only allow children to carry out cleaning and user maintenance under supervision.
- Never carry out technical changes to the unit.
- Only use original spare parts and accessories.

### **Intended use**

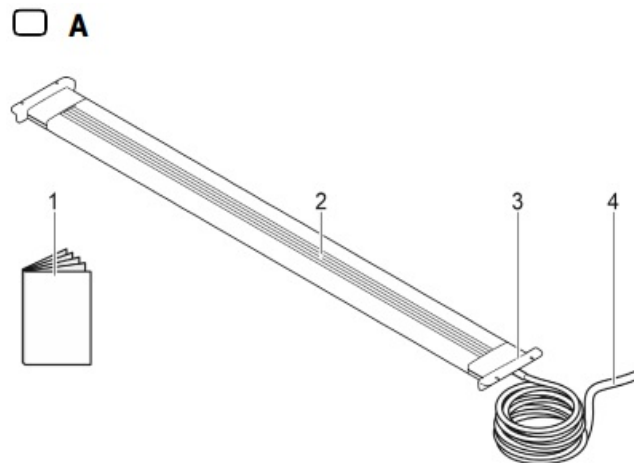
Only use the product described in this manual as follows:

- For illumination and facilitating biological processes in aquariums.
- While adhering to the technical specifications. (→ Technical data)  
The following restrictions apply to the unit:
- Indoors and for private aquarium-keeping purposes.
- Only suitable for freshwater aquariums.

## **Product Description**

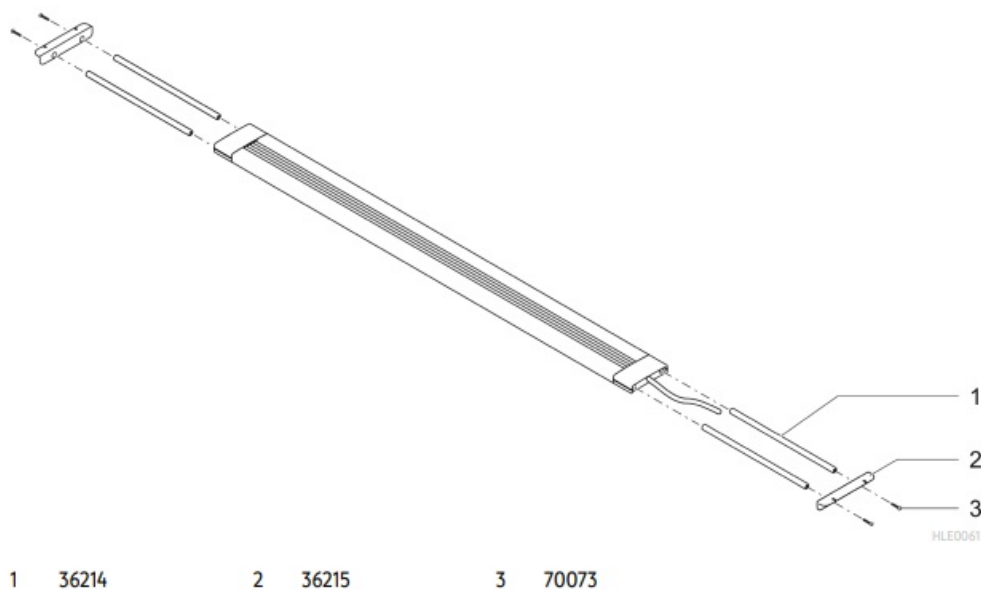
### **Overview**

## A



1. MotionControl LED
2. Operating instructions
3. LED spotlight
4. Universal adapter
5. Connection cable

MotionControl LED is a water-proof LED lamp for natural sunlight simulation in OASE HighLine aquariums.



### Easy Aquarium Control System (EAC)

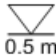





This product can communicate with the Easy Aquarium Control System (EAC). EAC allows convenient control via smartphone or tablet, and ensures maximum convenience and reliability. For information on EAC and the possibilities it offers, visit: [www.oase.com](http://www.oase.com)

### Accessories

- EAC Aquarium Controller (33885) for controlling up to five EAC-compatible devices using the app.
- Swing adapter (33917) for fastening the LED lamp on open aquariums.
- Cable suspension set (33918) for fastening the LED lamp on the ceiling.
- EAC transformer (INT 33888, GB 33889) for the power supply.

- EAC Y adapter (33897) for operating multiple LED lamps.
- Power adapter (33898) for integration of an additional EAC transformer.
- IR Control Set (33886) as remote control of up to two EAC-compatible LED lamps.

## Description of product-specific symbols

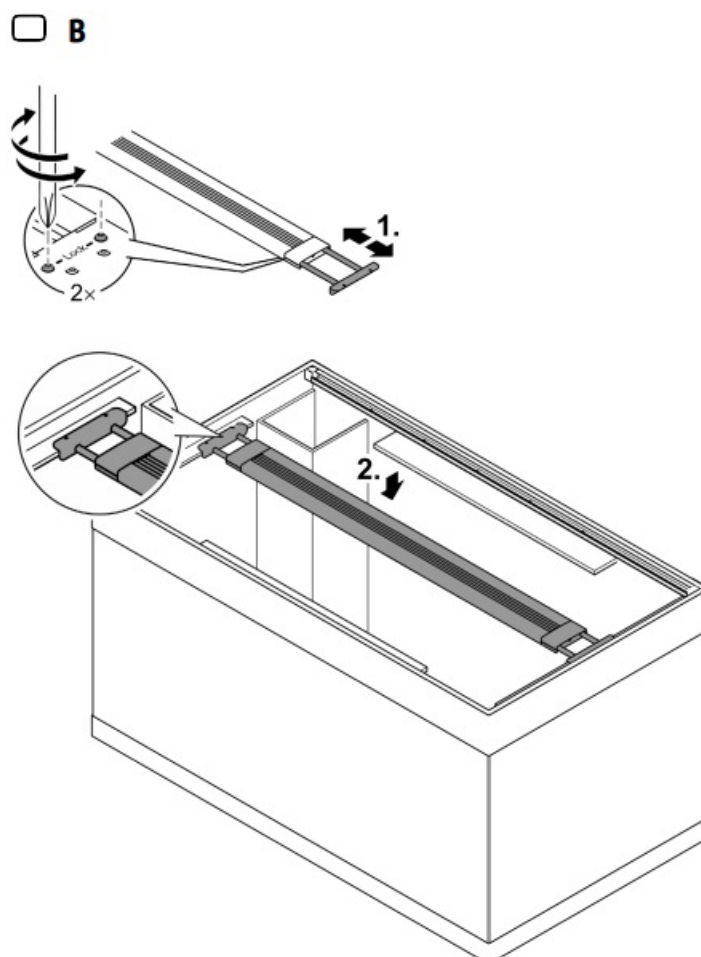
<b>IP68</b> 	The unit is dust-tight and protected against the results of permanent immersion in water to a depth of 0.5 m.
	The unit has protection rating III. Only operate the unit with safety-low voltage.
	The light source (LED) in the lamp can be replaced.
	Only use the unit in indoor spaces.
	Do not dispose of the unit with normal household waste.
	Read the operating instructions.

## Installation

### Installing the LED lamp with a universal adapter

How to proceed:

**B**



1. Undo the fastening screws on both sides. Push the universal adapter to the desired length and tighten the fastening screws.
2. Place the LED lamp on the side of the aquarium.

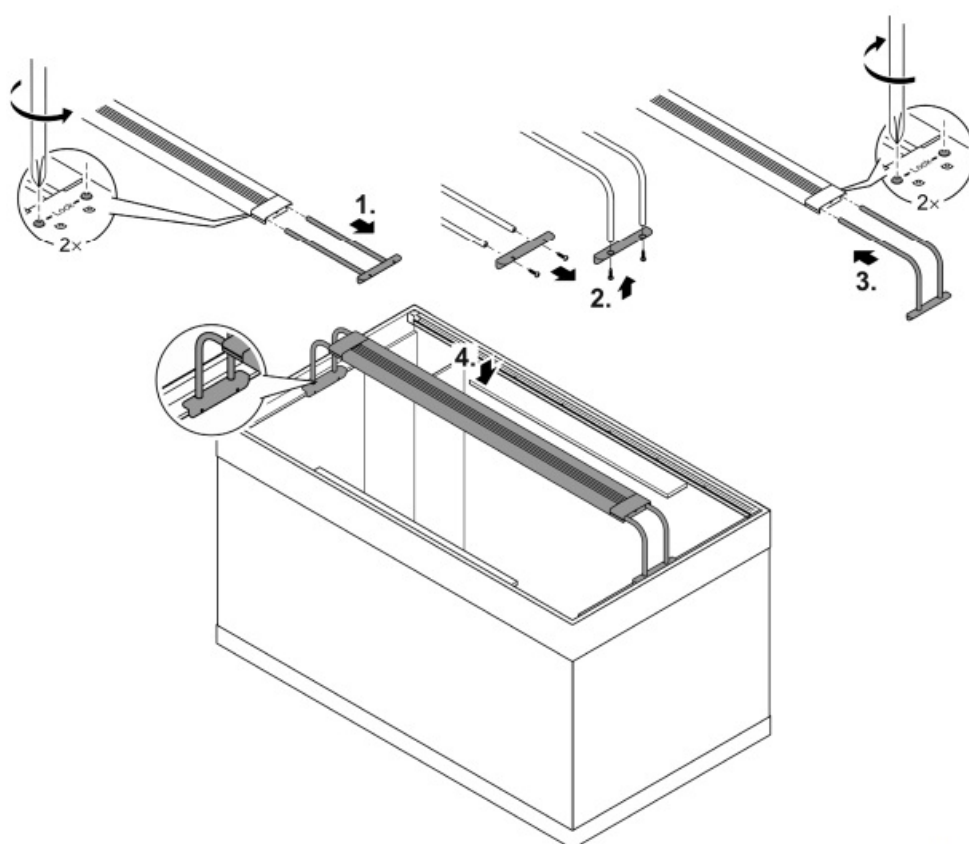
### Installing the LED lamp with a swing adapter

The optionally available swing adapter (33917) is required for installation on an open aquarium (aquarium without a lid).

**How to proceed:**

**C**

☐ **C**



1. Undo the fastening screws on both sides. Pull out both universal adapters.
2. Unscrew the holding fixture of the universal adapter and fasten it on the swing adapter.
3. Plug in the swing adapter, push it to the desired length and tighten the fastening screws.
4. Place the LED lamp on the side of the aquarium.

### Installing the LED lamp with the cable suspension set

The optionally available cable suspension set (33918) is required for installing the LED lamp on the ceiling.

#### **CAUTION**

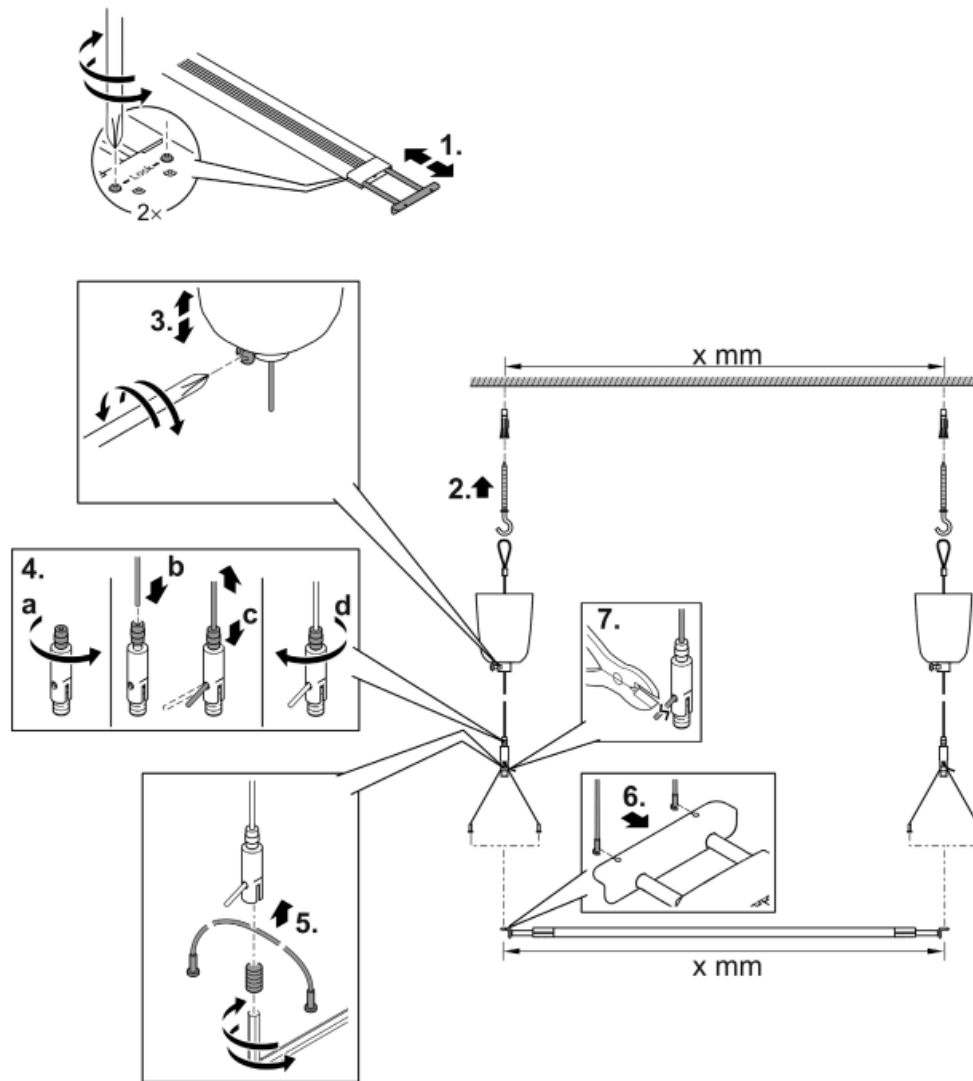
Risk of injury caused by falling lamp.

Use suitable dowels and screw hooks for installation on the ceiling. The dowels and screw hooks in the cable suspension set are not suitable for all substrates.

## How to proceed:

D

☐ D



1. Undo the fastening screws on both sides. Push the universal adapter to the desired length and tighten the fastening screws.
2. Install the screw hooks.  
Spacing between the bores equals the set spread of the LED lamp with the universal adapter.
3. Suspend the wire cable with the canopy on the screw hook. Fasten the canopy in place.
4. Fit wire cable holder.
  - a: Undo the knurled nut.
  - b: Insert wire cable, if there is resistance push with force, until the wire cable emerges. Set the wire cable to the desired length.
  - c: Push down the knurled nut to pull back the wire cable.
  - d: Tighten the knurled nut to fasten the wire cable in place.
5. Unscrew the threaded pin, insert the short wire cable in the centre of the slot in the wire cable holder, screw in

and tighten the threaded pin

Ensure that both ends of the wire cable are the same length.

6. Ensure that the sealed ends of the short wire cables are attached to the universal adapter.
7. If required, re-adjust all wire cables, so that the LED lamp is straight when suspended. Then cut off the length of wire cable protruding from the wire cable holder.

## Connection

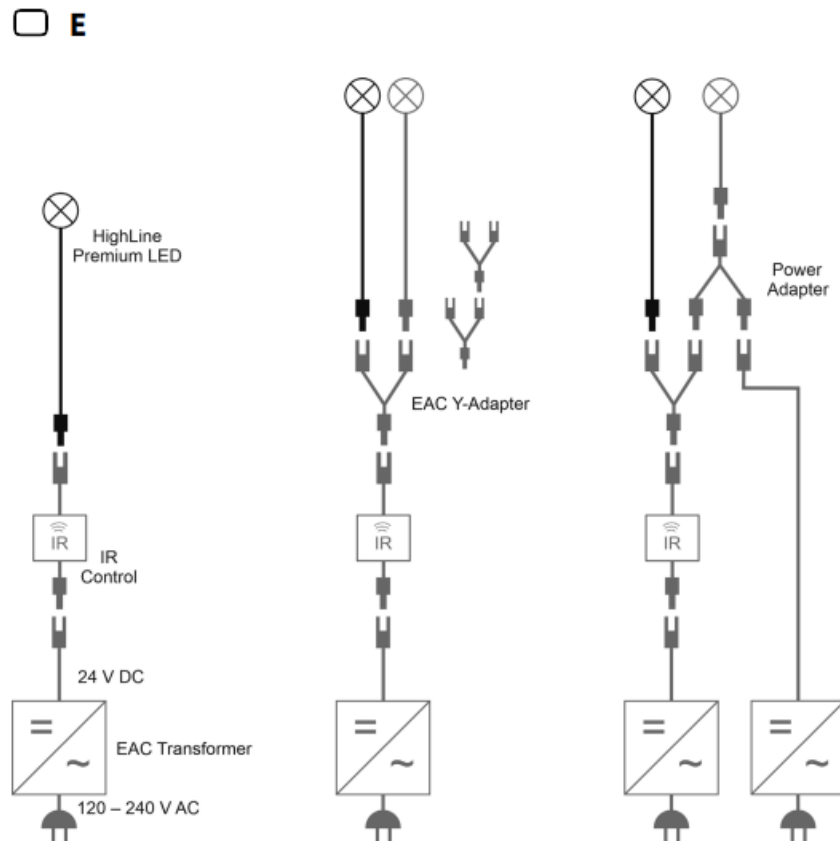
### CAUTION

Strong LED light can lead to flash burn injuries of the eyes.  
Never look into the light source.

### NOTE

Never connect or disconnect the plugs and sockets of the connection cables when they are un-der load! This could damage the contacts.  
First isolate the unit (switch off and disconnect from the power supply), then start work on the unit.

E, F



- The EAC transformer is required for the power supply. (→ Accessories)
- The optionally available EAC Y adapter can be used to connect multiple LED lamps.
- Always adhere to the maximum connected load of the EAC transformer. If this load is exceeded, an additional power adapter and EAC transformer can be used.

The connected load is calculated from the total power consumption of the individual LED lamps. (→ Technical data)

## Malfunction remedy



Malfunction	Cause	Remedy
LED lamp does not light up.	LED lamp not connected	Check connections
	No supply voltage	Connect the EAC transformer to the power supply
	LED lamp faulty	Replace LED lamp

## Cleaning

### WARNING

Risk of severe injuries or death by electric shock.

Disconnect the unit from the mains before you start working on it.

### Cleaning the device

Clean the unit as required but at least twice per year.

If necessary, clean the unit with clear water using a soft brush.

Do not use cleaning agents or chemical solutions. We recommend using OASE PumpClean to remove calcium deposits.

### Repair work

The light source (LED) in the LED spotlight cannot be replaced.

## Technical data

MotionControl LED		45	65	80	100	120
Mains voltage	V DC	24	24	24	24	24
Light flux all LEDs lit	lm	1020	1670	2370	2980	3760
White 4000 K	lm	460	750	1080	1370	1800
White 6000 K	lm	440	730	1040	1360	1820
Red	lm	70	110	160	210	270
Blue	lm	80	130	170	230	300
Beam angle	°	120	120	120	120	120
Power consumption	W	30	47	67	83	105
Protection type		IP 68	IP 68	IP 68	IP 68	IP 68
Connection    Length cable	m	3	3	3	3	3
Dimensions    Length	mm	440	640	830	1040	1330
Width	mm	100	100	100	100	100
Height	mm	15	15	15	15	15
Spread with min.	mm	410	610	800	1000	1300
universal max.	mm	610	810	1000	1200	1500
Weight	kg	0.58	0.77	0.96	1.16	1.44
Suitable for HighLine aquarium	—	125	175	200	300	400

## Disposal

### NOTE

Do not dispose of this unit with household waste.

- Dispose of the unit by using the return system provided for this purpose.
- Should you have questions, please contact your local disposal company. They will give you information on how to correctly dispose of the unit.
- Render the unit unusable by cutting the cables.

### OASE GmbH

Tecklenburger Straße 161

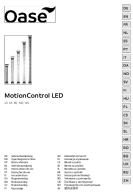
48477 Hörstel | Germany

+49 (0) 5454 80-0

+49 (0) 5454 80-9353

[info@oase.com](mailto:info@oase.com)

## Documents / Resources

	<p><a href="#">oase 45 Motion Control LED Set</a> [pdf] Instruction Manual</p> <p>45, 65, 80, 100, 120, 45 Motion Control LED Set, 45, Motion Control LED Set, Control LED Set, LED Set, Set</p>
--	--

## References

- [User Manual](#)

### Manuals+, [Privacy Policy](#)

This website is an independent publication and is neither affiliated with nor endorsed by any of the trademark owners. The "Bluetooth®" word mark and logos are registered trademarks owned by Bluetooth SIG, Inc. The "Wi-Fi®" word mark and logos are registered trademarks owned by the Wi-Fi Alliance. Any use of these marks on this website does not imply any affiliation with or endorsement.