

NZXT Function 2 MiniTKL Optical Gaming Keyboard



NZXT Function 2 MiniTKL Optical Gaming Keyboard Instruction Manual

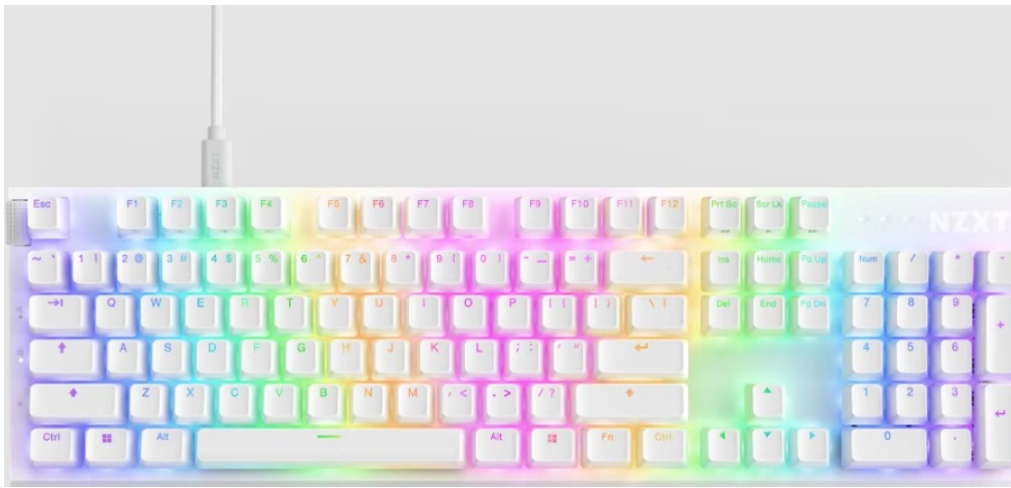
[Home](#) » [Nzxt](#) » NZXT Function 2 MiniTKL Optical Gaming Keyboard Instruction Manual 

Contents

- 1 NZXT Function 2 MiniTKL Optical Gaming Keyboard
- 2 Product Information
- 3 Product Usage Instructions
- 4 INTRODUCTION FUNCTION
- 5 ABOUT THE FUNCTION 2 KEYBOARD
- 6 PACKAGE CONTENTS & DESCRIPTION
- 7 SETTING UP THE KEYBOARD
- 8 CHANGING KEYCAPS AND KEY SWITCHES
- 9 USING THE NZXT FUNCTION 2 KEYBOARD WITH CAM SOFTWARE
- 10 USING THE KEYBOARD IN HARDWARE MODE
- 11 NZXT GLOBAL WARRANTY POLICY
- 12 UKCA DECLARATION OF CONFORMITY
- 13 FCC, ISED STATEMENT
- 14 TEMPERATURE AND RATING INFORMATION:
- 15 Documents / Resources
 - 15.1 References
- 16 Related Posts

NZXT

NZXT Function 2 MiniTKL Optical Gaming Keyboard



Specifications

- Model: NZXT Function 2
- Switches: Linear Optical Switches
- Polling Rate: 8,000 Hz
- Extra Switches: 4 x 35g Yellow Linear Optical Switches, 4 x 45g Red Linear Optical Switches

Product Information

The NZXT Function 2 is an optical gaming keyboard designed for lightning-fast performance. It features linear optical switches and an 8,000 Hz polling rate to ensure precise and rapid key presses. Users can enjoy the tactile feedback of each keystroke and easily customize the keyboard by hot-swapping with the included extra switches.

Product Usage Instructions

Setup

1. Connect the USB cable to your computer.
2. Place the keyboard on a flat surface.
3. Optionally attach the wrist rest for added comfort.

Switch Customization

1. Use the Keycap Removal Tool to remove existing keycaps.
2. Use the Keyswitch Removal Tool to remove switches.
3. Insert the desired extra switches (35g Yellow or 45g Red) into the keyboard.

Functionality

1. Experience the fast and responsive keystrokes of the linear optical switches.
2. Take advantage of the high polling rate for precise input recognition.
3. Customize key feel by swapping switches as desired.

Frequently Asked Questions (FAQ)

- **Q: Can I use the Function 2 keyboard with a Mac computer?**

A: Yes, the Function 2 keyboard is compatible with Mac computers, but some key functions may differ from PC usage.

- **Q: How do I clean the keyboard?**

A: To clean the keyboard, gently remove keycaps and switches using the provided tools, then use compressed air or a soft brush to remove dust and debris.

- **Q: Can I program custom macros on this keyboard?**

A: Yes, you can use the software provided by NZXT to program custom macros and key functions on the Function 2 keyboard.

INTRODUCTION FUNCTION

Congratulations on owning your very own NZXT Function 2 Keyboard! Whether you are a professional streamer or a casual player, we're excited to welcome you to the family of NZXT peripherals.

ABOUT THE FUNCTION 2 KEYBOARD

Function 2

Experience lightning-fast performance with the NZXT Function 2—an optical gaming keyboard equipped with linear optical switches and an 8,000 Hz polling rate to ensure every key press is registered with speed and precision. Savor the satisfying sound and tactile feedback of each keystroke, and switch up the feel at any time by easily hot-swapping with the included extra switches.

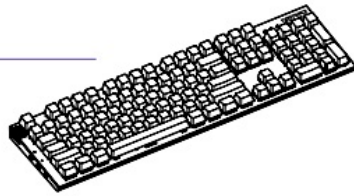
Function 2 MiniTKL

Experience lightning-fast performance in a compact design with the NZXT Function 2 MiniTKL. This space-saving keyboard packs the full tenkeyless key count into the smallest footprint possible. Linear optical switches and an 8,000 Hz polling rate ensure unmatched in-game responsiveness. Enjoy the sound and feel of every keystroke, and customize it by hot-swapping with the extra switches.

PACKAGE CONTENTS & DESCRIPTION

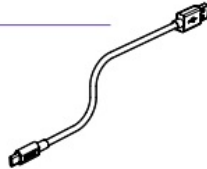
A Keyboard

x1



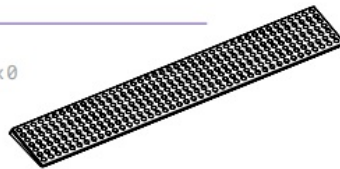
B USB Cable

x1



C Wrist Rest

Function 2 x1
Function 2 MiniTKL x0



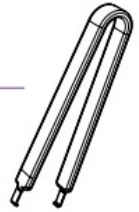
D Keycap Removal Tool

x1



E Keyswitch Removal Tool

x1



F 35g Yellow Linear Optical Switches

x4

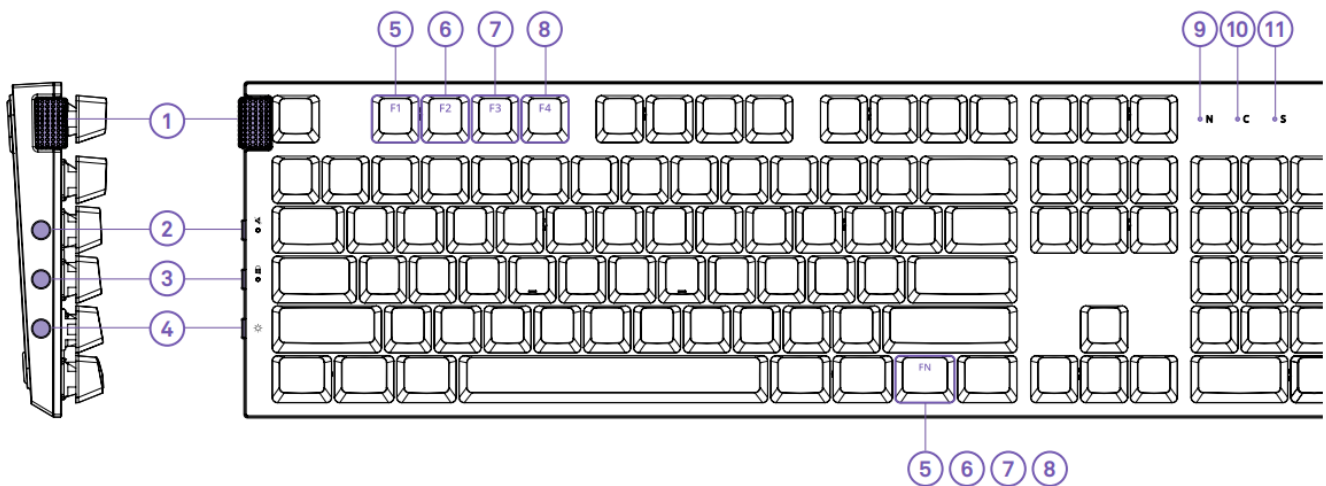


G 45g Red Linear Optical Switches

x4

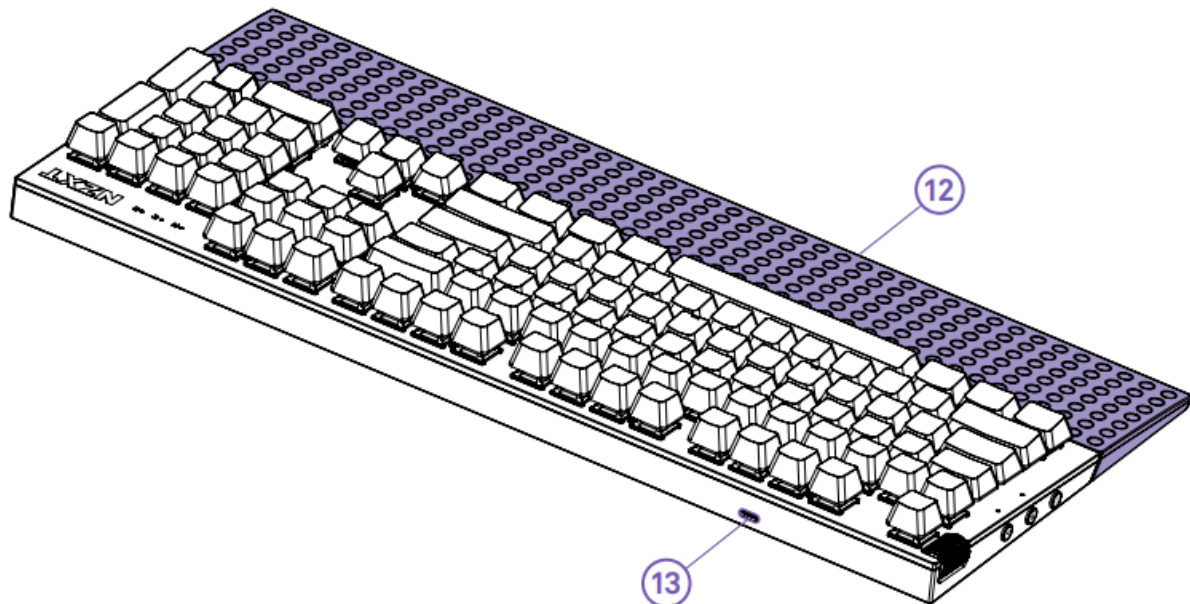


NZXT FUNCTION 2 KEYBOARD



1. Volume Wheel
2. Speaker Deafen/Mute Button
3. Winlock Button
4. Brightness Button
5. Profile 1 (FN + F1 Key)
6. Profile 2 (FN + F2 Key)

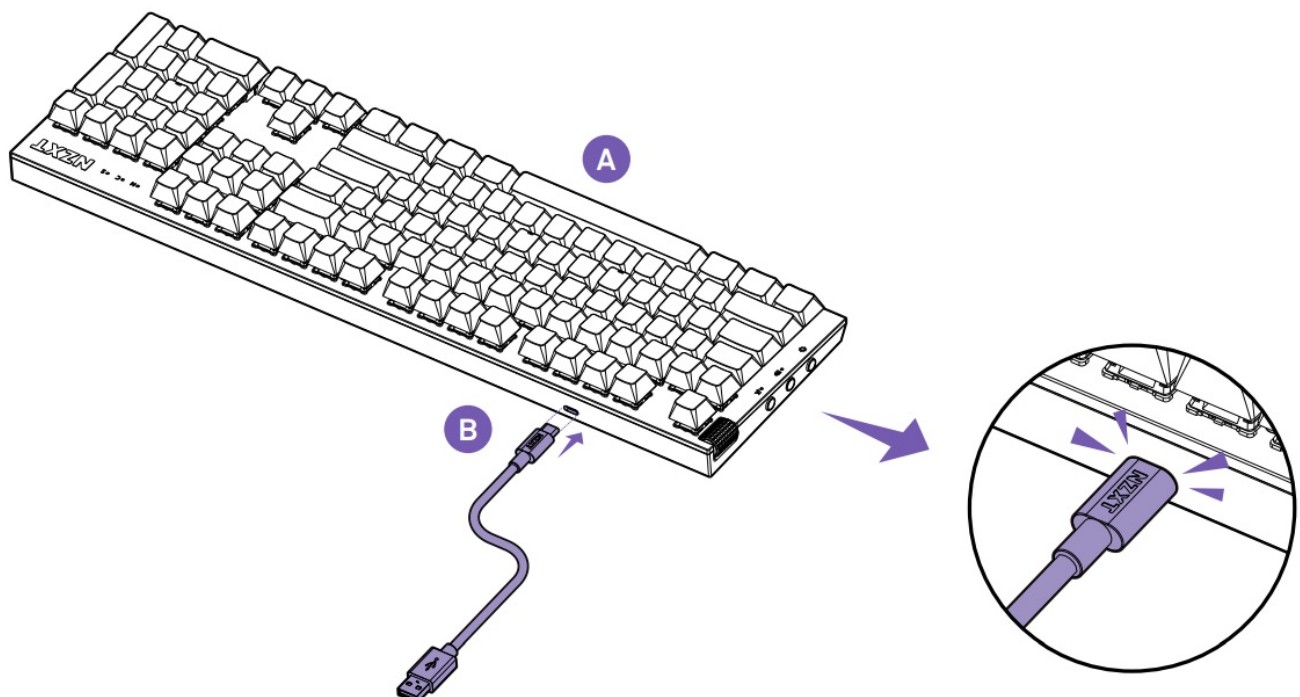
- 7. Profile 3 (FN + F3 Key)
- 8. Profile 4 (FN + F4 Key)
- 9. Numlock Indicator
- 10. Caps lock Indicator
- 11. Scroll Lock Indicator
- 12. Wrist Rest
- 13. USB-C Port



SETTING UP THE KEYBOARD

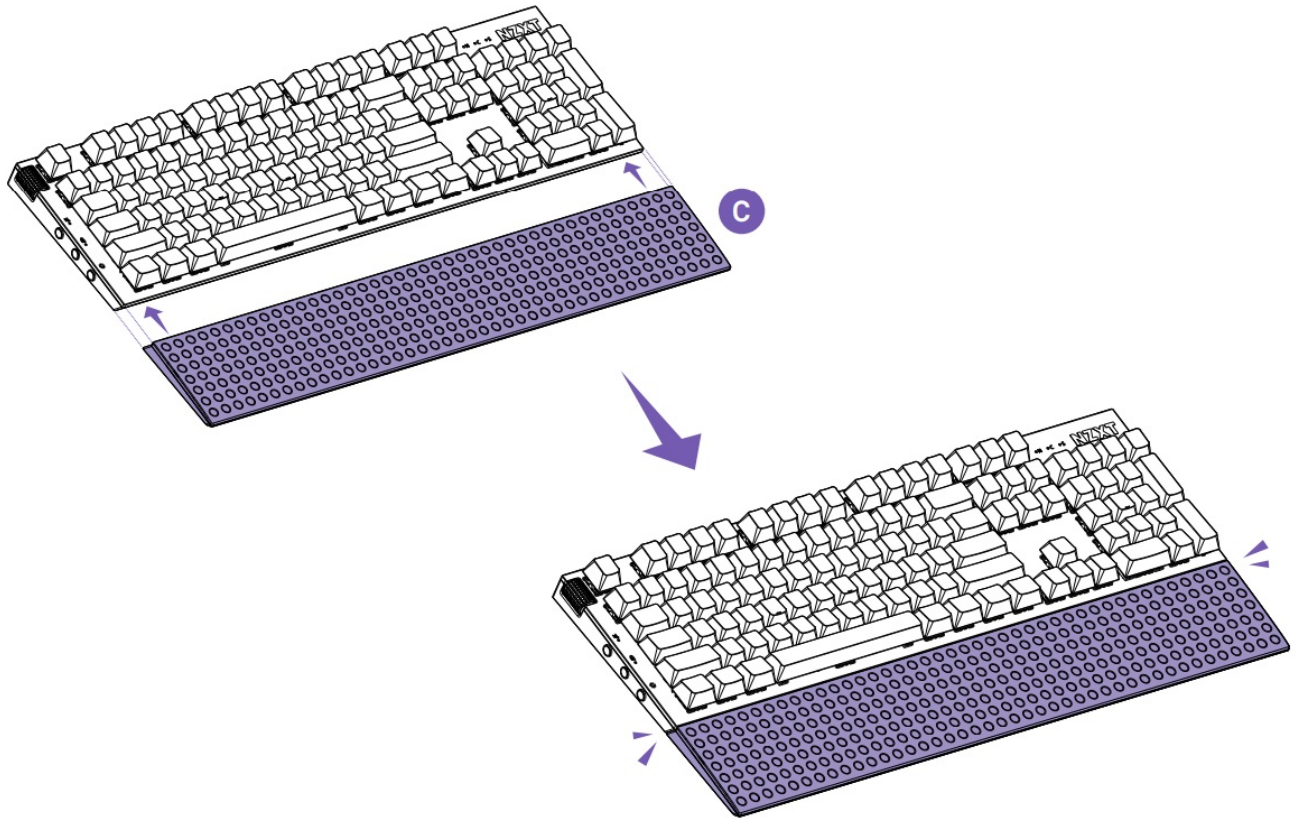
1. STEP 1

Connect the USB-C Cable to the port on the rear of the keyboard, and the other end to any available USB 2.0 (or faster) port on your PC.



2. STEP 2

Attach the wrist rest to the front of the keyboard. The wrist rest is magnetic—it will connect and center itself automatically.



3. STEP 3

Deploy the angled rear feet on the bottom of the keyboard if you want a greater amount of typing angle. There are two nested feet for medium or high degrees of typing angle.



4. **STEP 4**

The polling rate is set to 1000Hz by default, but you can adjust it with the NZXT Cam software to better suit your needs. With options ranging from 125Hz to 8000Hz, you can customize your keyboard for optimal performance whether you're a gamer or a professional.

5. **STEP 5**

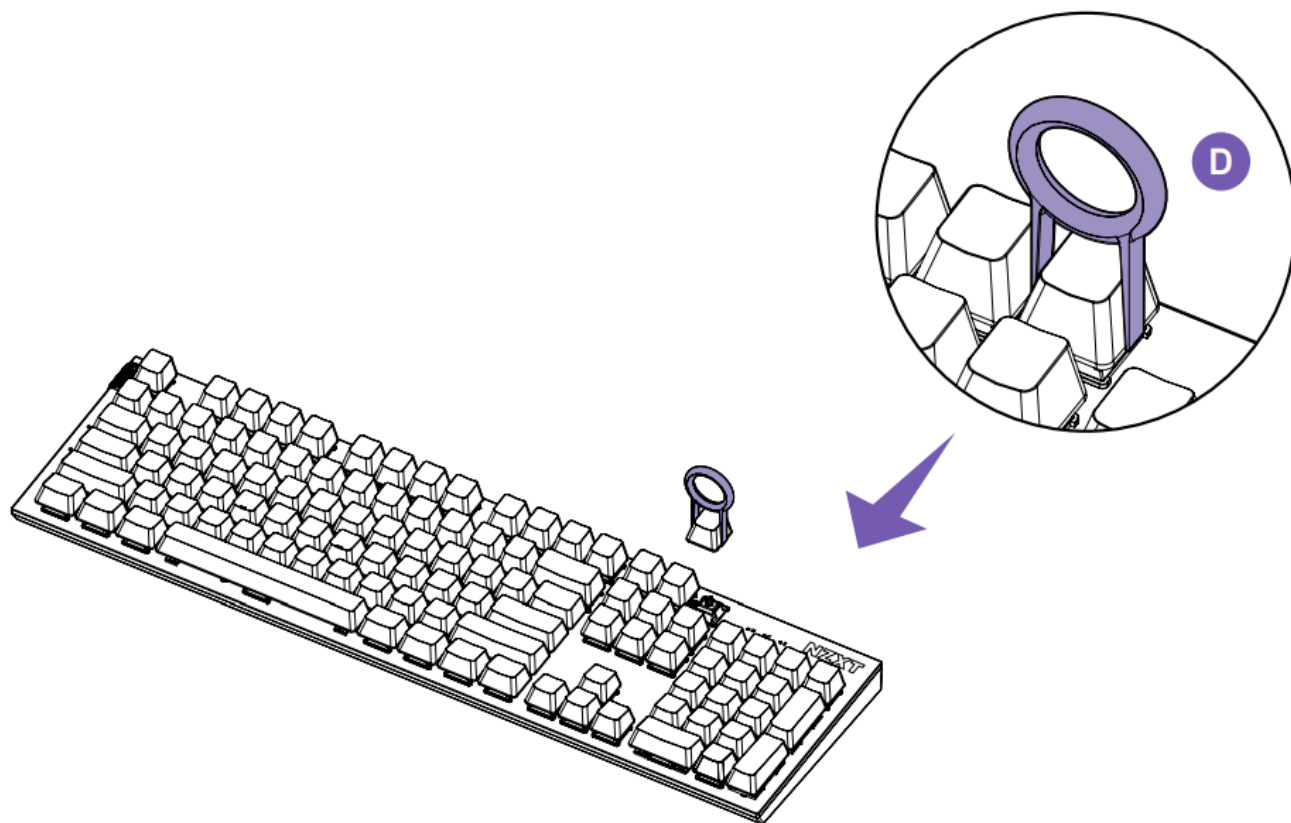
The NZXT Swift Linear Optical Switches have a default actuation point of 1.0mm, but you can adjust to 1.5mm with the NZXT Cam software.

CHANGING KEYCAPS AND KEY SWITCHES

1. **STEP 1**

REMOVING/REINSTALLATION OF KEYCAPS

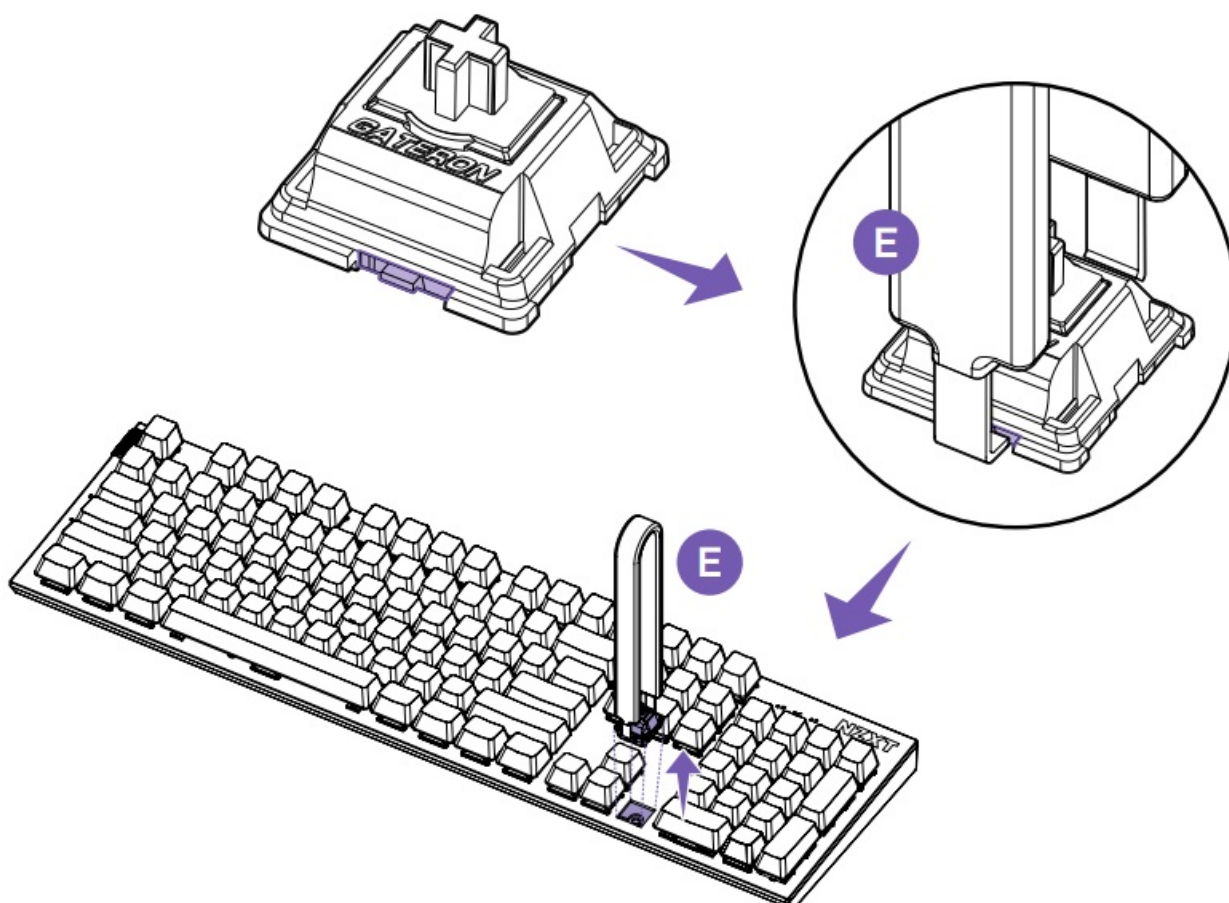
Using the included keycap puller tool, affix the tool over the top of the keycap and gently pull to remove. If the keyswitch comes out along with the keycap, follow the below guide for reinstallation.



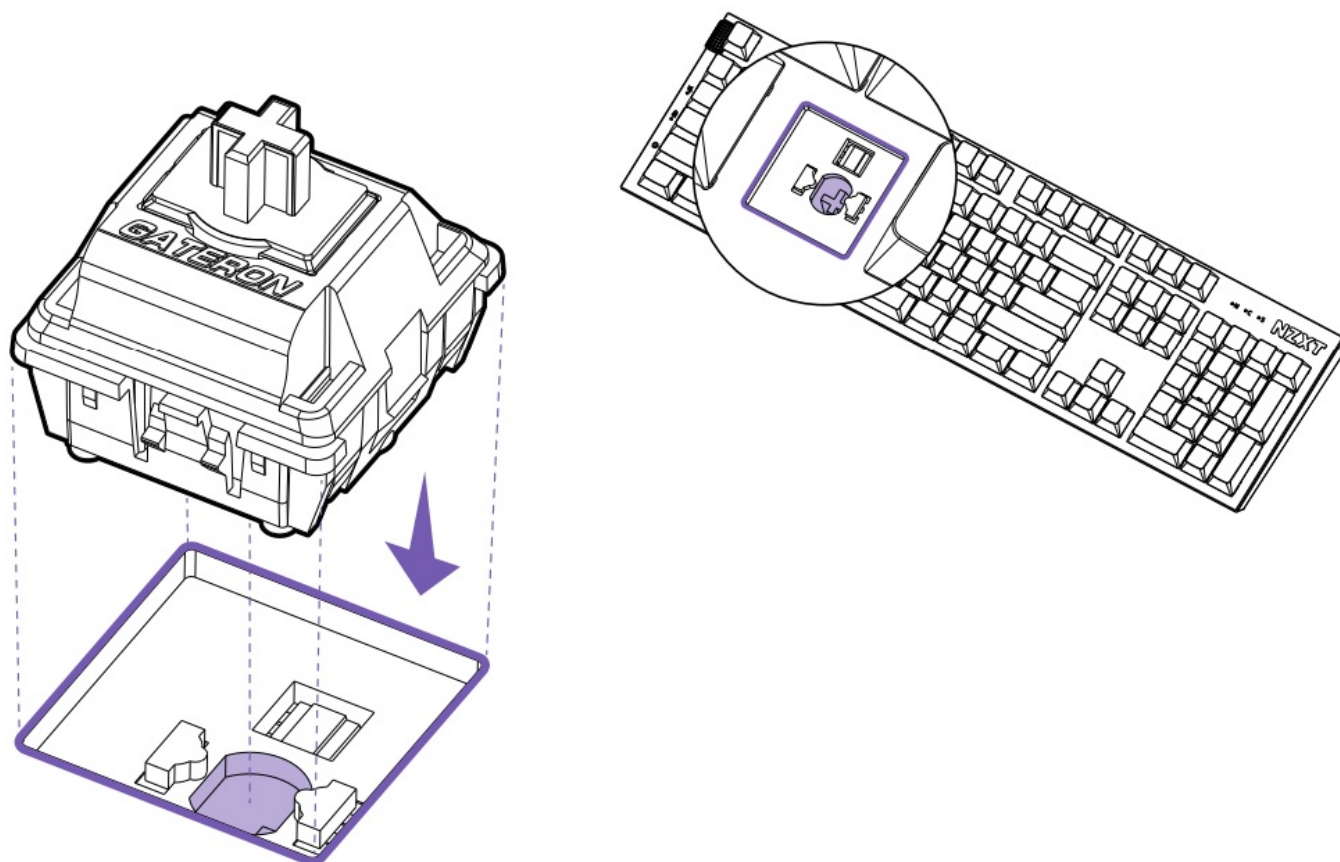
2. STEP 2

REMOVING/REINSTALLATION OF KEYSWITCHES

Using the included keyswitch removal tool, grip the keyswitch from the top, orienting the ends of the tool along the back and front of the keyswitch. There are two tabs that retain the keyswitch into the plate, and when depressed, allow removal. Note that the tool should not scrape the top plate, and it is unnecessary to grip underneath the switch. Grip the sides of the plastic housing only, near the bottom.



In order to reinstall key switches into the keyboard first make sure that all of the pins are straight and not kinked or folded against the bottom housing of the switch. Visually check that the two metal prongs on the keyswitch correspond with the two sockets on the keyswitch socket on the keyboard. Insert the switch into the keyboard socket firmly using direct overhead pressure. The sides of the switch housing should be against the top plate of the keyboard when inserted correctly.



USING THE NZXT FUNCTION 2 KEYBOARD WITH CAM SOFTWARE

• DOWNLOADING AND INSTALLING CAM SOFTWARE

Go to nzxt.com/software/cam for the latest version of CAM

• SETUP OF CAM PROFILES AND STORING ON THE KEYBOARD

The Function Keyboard has four onboard profiles that can be setup and stored via CAM software. After profile information is stored, it is not necessary to run CAM to operate stored lighting, macros, etc.

• CONTROLLING PROFILE SWITCHING

Depressing the FN (short for “Function”) key + one of the F1, F2, F3, or F4 keys will change to the profile stored at that number value (1 through 4, respectively).

• LIGHTING MODES

There are four default lighting modes stored on profiles #1 through #4 and can be accessed by depressing the FN key + F1, F2, F3, or F4.

• CUSTOMIZING RGB LIGHTING

By using CAM/Keyboard/Lighting, users are able to customize lighting per key, and set up lighting under profiles (if desired), as described in SECTION B.

• CUSTOMIZING KEYBOARD MACROS

By using CAM/Keyboard/Macros, users are able to create both simple and complex macros, and store them

under profiles (if desired), as described in SECTION B.

• **REBINDING KEYS**

By using CAM/Keyboard/Key Remapping, users are able to create new and customized key bindings, and store them under profiles (if desired), as described in SECTION B

USING THE KEYBOARD IN HARDWARE MODE

• **CONTROLLING RGB LIGHTING**

There are four default lighting modes stored on profiles #1 through #4 and can be accessed by depressing the FN key + F1, F2, F3, or F4. If customized lighting has been set up, and assigned custom lighting to one of the onboard profiles, custom lighting will activate when switching to a custom profile.

• **SWITCHING TO STORED PROFILES (1-4)**

Depressing the FN (short for “Function”) key + one of the F1, F2, F3, or F4 keys will change to the profile stored at that number value (1 through 4, respectively).

NZXT GLOBAL WARRANTY POLICY

This NZXT Global Warranty Policy governs the sale of products by NZXT to you.

WARRANTY LENGTH

New NZXT Product	Warranty Length
KEYBOARD	2 Years

Any replacement product will be covered under warranty for the remainder of the warranty period or thirty days, whichever is longer. Proof of purchase is required for warranty service.

WHO IS PROTECTED

The Warranty covers only NZXT products purchased by the original consumer.

WHAT IS AND IS NOT COVERED

Please note that our warranty is not an unconditional guarantee. If the product, in NZXT’s reasonable opinion, malfunctions within the warranty period, NZXT will provide you at its sole discretion with a repaired or replacement product, either new or refurbished, with a similar function that is equal or greater in value depending on supply. Our warranty does not cover the following:

- any product or serial number/warranty sticker modification applied without permission from NZXT;
- any damage that is not a manufacturing defect;
- damage, deterioration or malfunction resulting from: accident, abuse, misuse, neglect, fire, water, lightning, or other acts of nature, unauthorized product modification or failure to follow instructions included with the product;
- improper installation, unauthorized alterations or modifications, or repair or attempted repair by anyone not authorized by NZXT;
- shipping or transport damage (claims must be made with the carrier);
- normal wear and tear.

NZXT does not warrant that this product will meet your requirements. It is your responsibility to determine the

suitability of this product for your purpose. For NZXT Store orders, we cover two way return shipping for all exchanges and returns. For all other authorized dealers, NZXT Support does not cover return shipping and only covers one way shipping from NZXT back to the end user for exchanges. Two way expedited shipping is provided for all PSUs covered under the Less Than Three program, indiscriminate of purchase location, provided the location is an approved NZXT reseller.

EXCLUSION OF DAMAGES (DISCLAIMER)

NZXT's sole obligation and liability under this warranty is limited to the repair or replacement of a defective product with either a new or refurbished product with a similar function that is equal or greater in value at our option. NZXT shall not, in any event, be liable for any incidental or consequential damage, including but not limited to damages resulting from interruption of service and loss of data, business, or for liability in tort relating to this product or resulting from its use or possession.

LIMITATIONS OF IMPLIED WARRANTIES

There are no other warranties, expressed or implied, including but not limited to those of merchantability or fitness for a particular purpose. The duration of implied warranties is limited to the warranty length specified in Paragraph I.

TO OBTAIN TECHNICAL SUPPORT

If you have already referenced your product owner's manual and still need help, you may contact us by phone at +1 (800) 228-9395, by email at service@nzxt.com, or visit the NZXT Support site at nzxt.com/customer-support.

HOW TO OBTAIN A WARRANTY SERVICE FROM NZXT

To receive a warranty service for your product when purchased directly from NZXT, you must submit a request via the NZXT Support site outlining the problem. If a technician deems the product defective or requiring testing, you will be required to provide a copy of your proof of purchase, which will enable you to submit a Return Merchandise Authorization "RMA" request.

Once approved, you'll receive an RMA number, upon which you will be asked to ship the defective item back to NZXT with the RMA number clearly marked or labelled on the package. NZXT recommends that appropriate measures are taken to safeguard the product from damage during shipping.

APPLICABLE LAW AND ADDITIONAL LEGAL RIGHTS FOR CONSUMERS

This warranty gives you specific legal rights. These conditions are governed and construed in accordance with the laws of California (with exception of its conflict of law provisions), and the application of the United Nations Convention of Contracts for the International Sale of Goods is expressly excluded. The non-exclusive jurisdiction of the courts of California is agreed, which means that you may bring a claim to enforce your consumer protection rights in connection with this Global Warranty in the country which you have your habitual residence where you may have additional rights. These rights may vary.

For original consumers who are covered by consumer protection laws or regulations in their country, state, or province of purchase or, if different, their country, state, or province of residence, the benefits conferred by this warranty are in addition to all rights and remedies conveyed by such consumer protection laws and regulations. To the extent that liability under such consumer laws can be limited, NZXT's liability is limited, and its sole option, to repair or replacement, either new or refurbished, with a similar function that is equal or greater in value depending on supply.

In the United Kingdom:

- For NZXT products sold to customers in the UK, during the expected lifespan of your product your legal rights entitle you to the following:
 - Up to 30 days: if your goods are faulty, then you can get an immediate refund.
 - Up to six months: if your goods can't be repaired or replaced, then you're entitled to a full refund, in most cases.
 - Up to six years: if your goods do not last a reasonable length of time you may be entitled to some money

back.

- If the person seeking to rely on the guarantee is not the original consumer, the NZXT Warranty will cover the product in relation to that person provided that they are able to provide proof of the transfer of the benefit of the guarantee from the original consumer.
- The implied warranties under the Consumer Rights Act 2015 says that your goods must be as described, fit for all purposes for which such goods are usually supplied, and of satisfactory quality.

In the EU:

If you are a consumer and have your habitual residence in the EU, you additionally enjoy the protection afforded to you by provisions that cannot be derogated from by agreement by virtue of the law where you have your habitual residence.

WARRANTY SERVICE FROM RESELLERS

In the event that a warranty service is sought, you must provide proof of purchase (store receipt or invoice) in order to receive the service and if deemed necessary, repair or replacement product.

In North America:

Within the first 60 days after purchase, please return your product (or for power supplies installed within our enclosures, just the failed power supply) to your dealer or reseller for a replacement. If the product is still within warranty and you can no longer return it to your dealer, please contact NZXT Customer Support (see above) for assistance and instructions. NZXT will not accept returns without prior approval and an RMA number.

In Europe:

Within the first year after purchase, please return your product (or for power supplies installed within our enclosures, just the failed power supply) to your dealer or reseller for a replacement. If the product is still within warranty and you can no longer return it to your dealer, please contact NZXT Customer Support (see above) for assistance and instructions. NZXT will not accept returns without prior approval.

In Australasia:

Within the first two years after purchase, please return your product (or for power supplies installed within our enclosures, just the failed power supply) to your dealer or reseller for a replacement. If the product is still within warranty and you can no longer return it to your dealer, please contact NZXT Customer Support (see above) for assistance and instructions. NZXT will not accept returns without prior approval.

The cost of shipping will be borne at the first instance by you; however, if the purchased item is defective, NZXT will reimburse reasonable postage or transportation of costs.

Outside North America, Europe, and Australasia:

If your product needs to be returned within the warranty period, please contact the retailer or distributor from whom you purchased the product.

NZXT.COM STORE RETURNS/EXCHANGE POLICY

Eligible products under this NZXT Warranty qualify for a full refund or exchange only with an authorized RMA number and if the item is returned to the [NZXT.com](https://nzxt.com) store inventory within 30 days of purchase. Returns are not allowed beyond 30 days of the purchase date. The [NZXT.com](https://nzxt.com) Store reserves the right to deny any return or exchange. Refunds will be credited to the original method of payment. To initiate a return, simply submit a request via NZXT support site.

Visit nzxt.com/warranty and support.nzxt.com for information on warranty coverage and service.

NZXT, Inc. | 15736 E. Valley Blvd, City of Industry, CA 91744, USA

NZXT Europe GmbH | Ammerthalstrasse 32 Kirchheim bei Muenchen 85551, Germany NZXT UK Ltd. | First Floor
5 Fleet Place London EC4M 7RD, GB United Kingdom

+1 (800) 228-9395 / service@nzxt.com / nzxt.com

REGULATORY STATEMENT



UKCA DECLARATION OF CONFORMITY

The object of the declaration described above is in conformity with the relevant UK harmonisation legislation:

- Electromagnetic Compatibility Regulations 2016
- Electrical Equipment (Safety) Regulations 2016
- The Restriction of the Use of Certain Hazardous Substances in Electrical and Electronic Equipment Regulations 2012

ROHS STATEMENT

This product is compliant to implemented RoHS (Restriction of Hazardous Substances) type regulations worldwide

REACH STATEMENT

EU REACH SVHC Disclosure on Candidate List

REACH (Registration, Evaluation, Authorization and Restriction of Chemicals, EC 1907/2006) is the European Union's (EU) chemical substances regulatory framework. REACH requires NZXT Inc. to provide customers with sufficient information on Substances of Very High Concern (SVHC) contained in products in concentration above 0.1% weight by weight (w/w) to allow safe use of the product.

DECLARATION OF CONFORMITY

The device complies with the requirements set out in the Council Directives relevant Union harmonization legislation:

- EMC Directive 2014/30/EU
- LVD Directive 2014/35/EU
- RoHS Directive 2011/65/EU & (EU) 2015/863

To protect the global environment and as an environmentalist, NZXT must remind you that:

Under the European Union ("EU") Directive on Waste Electrical and Electronic Equipment, Directive 2002/96/EC, which takes effect on August 13, 2005, products of "electrical and electronic equipment" cannot be discarded as municipal waste anymore and manufacturers of covered electronic equipment will be obligated to take back such products at the end of their useful life. NZXT will comply with the product take back requirements at the end of life of NZXT-branded products that are sold into the EU. You can return these products to local collection points.



FCC, ISSED STATEMENT

This device complies with Part 15 of the FCC Rules. Operation is subject to the following two conditions:

1. This device may not cause harmful in-terference, and
2. this device must accept any interference received, including interference that may cause undesired operation.
- CAN ICES-003(B) / NMB-003(B)

TEMPERATURE AND RATING INFORMATION:

Operating Temperature	0~40 °C
Input	DC 5V, 900mA

ROHS COMPLIANCE

产品名称：鍵盤						
(型号：KB-2202, KB-001NB-US, KB-001NB-UK, KB-001NB-DE, KB-001NB-ND, KB-001NW-US, KB-001NW-UK, KB-001NW-DE, KB-001NW-ND)						
有害物质及其化学符号						
单元Unit	铅 Lead(Pb)	汞 Mercury(Hg)	镉 Cadmium(Cd)	六价铬 Hexavalent chromium(Cr ⁺⁶)	多溴联苯 Polybrominated biphenyls(PBB)	多溴二苯醚 Polybrominated diphenyl ethers (PBDE)
外壳	○	○	○	○	○	○
线材	○	○	○	○	○	○
电路板	○	○	○	○	○	○
电子零件	○	○	○	○	○	○

設備名稱：鍵盤						
(型號：KB-2202, KB-001NB-US, KB-001NB-UK, KB-001NB-DE, KB-001NB-ND, KB-001NW-US, KB-001NW-UK, KB-001NW-DE, KB-001NW-ND)						
限用物質及其化學符號						
單元Unit	鉛 Lead(Pb)	汞 Mercury(Hg)	鎘 Cadmium(Cd)	六價鉻 Hexavalent chromium(Cr ⁺⁶)	多溴聯苯 Polybrominated biphenyls(PBB)	多溴二苯醚 Polybrominated diphenyl ethers (PBDE)
外殼	○	○	○	○	○	○
電路板	○	○	○	○	○	○
線材	○	○	○	○	○	○
電子零件	○	○	○	○	○	○

产品名称：鍵盤						
(型号：KB-2203, KB-002NB-US, KB-002NB-UK, KB-002NB-DE, KB-002NB-ND, KB-002NW-US, KB-002NW-UK, KB-002NW-DE, KB-002NW-ND)						
有害物质及其化学符号						
单元Unit	铅 Lead(Pb)	汞 Mercury(Hg)	镉 Cadmium(Cd)	六价铬 Hexavalent chromium(Cr ⁺⁶)	多溴联苯 Polybrominated biphenyls(PBB)	多溴二苯醚 Polybrominated diphenyl ethers (PBDE)
外壳	○	○	○	○	○	○
线材	○	○	○	○	○	○
电路板	○	○	○	○	○	○
电子零件	○	○	○	○	○	○

設備名稱：鍵盤

(型號：KB-2203, KB-002NB-US, KB-002NB-UK, KB-002NB-DE, KB-002NB-ND, KB-002NW-US, KB-002NW-UK, KB-002NW-DE, KB-002NW-ND)

限用物質及其化學符號

單元 Unit	鉛 Lead(Pb)	汞 Mercury(Hg)	鎘 Cadmium(Cd)	六價鉻 Hexavalent chromium(Cr ⁺⁶)	多溴聯苯 Polybrominated biphenyls(PBB)	多溴二苯醚 Polybrominated diphenyl ethers (PBDE)
外殼	○	○	○	○	○	○
電路板	○	○	○	○	○	○
線材	○	○	○	○	○	○
電子零件	○	○	○	○	○	○

SUPPORT AND SERVICE

If you have any questions or problems with the NZXT product you purchased, please don't hesitate to contact us using our support system.

service@nzxt.com support.nzxt.com

Please include a detailed explanation of your problem and your proof of purchase. For comments and suggestions, you can e-mail our design team, designer@nzxt.com.

Lastly we would like to thank you for your support by purchasing this product. For more information about NZXT, please visit us online. NZXT Website: [NZXT.com](https://nzxt.com)

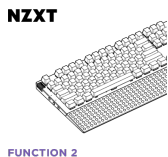
NZXT, Inc. | 15736 E. Valley Blvd, City of Industry, CA 91744, USA

NZXT Europe GmbH | Ammerthalstrasse 32 Kirchheim bei Muenchen 85551, Germany NZXT UK Ltd. | First Floor

5 Fleet Place London EC4M 7RD, GB United Kingdom

+1 (800) 228-9395 / service@nzxt.com / nzxt.com

Documents / Resources

	NZXT Function 2 MiniTKL Optical Gaming Keyboard [pdf] Instruction Manual Function 2 MiniTKL Optical Gaming Keyboard, Function 2, MiniTKL Optical Gaming Keyboard, Optical Gaming Keyboard, Gaming Keyboard, Keyboard
---	---

References

- [NZXT Custom & Prebuilt Gaming PCs, Parts, Peripherals | NZXT](#)
- [Customer Support | Gaming PCs | NZXT](#)
- [NZXT CAM | PC Monitoring and Configuration Software](#)
- www.nzxt.com
- [User Manual](#)

[Manuals+](#), [Privacy Policy](#)

This website is an independent publication and is neither affiliated with nor endorsed by any of the trademark owners. The "Bluetooth®" word mark and logos are registered trademarks owned by Bluetooth SIG, Inc. The "Wi-Fi®" word mark and logos are registered trademarks owned by the Wi-Fi Alliance. Any use of these marks on this website does not imply any affiliation with or endorsement.