

NYX
1SZD Dreadbox
Analog Synthesizer



NYX 1SZD Dreadbox Analog Synthesizer Instruction Manual

[Home](#) » [NYX](#) » NYX 1SZD Dreadbox Analog Synthesizer Instruction Manual 

Contents

- [1 NYX 1SZD Dreadbox Analog Synthesizer](#)
- [2 In the box you will find](#)
- [3 FAQ](#)
- [4 Documents / Resources](#)
 - [4.1 References](#)

NYX

NYX 1SZD Dreadbox Analog Synthesizer



Product Specifications

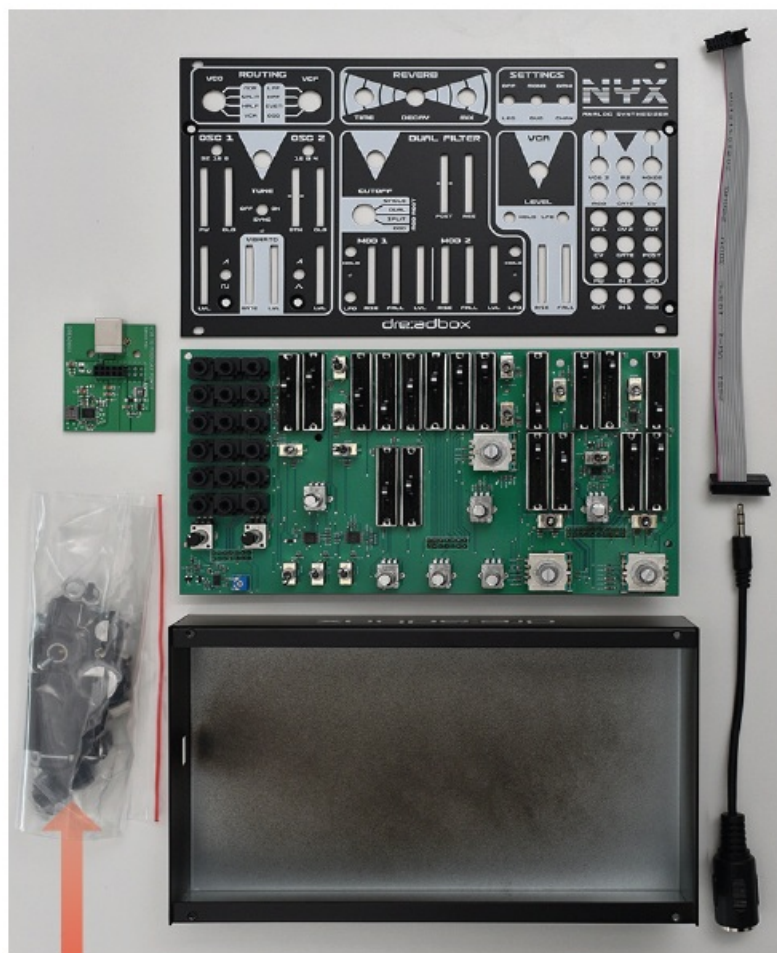
- 3x PCB boards
- Metal enclosure with panel
- Midi to 3.5mm adapter
- Ribbon cable for modular use

In the box you will find

- 3x PCB boards
- A plastic bag with the parts
- The metal enclosure with the panel
- Midi to 3,5mm adapter
- 1 ribbon cable for modular use

Bag contains:

- 4x rubber feet
- 1x 2mm Allen key
- 11x M3 brass screws
- 4x M3 black screws for panel mounting
- 5x M3 black screws countersunk type
- 2x metal spacers 12mm long M3
- 6x metal spacers 10mm long M3
- 2x plastic spacers 11mm long M3 double-ended
- 6x M8 nuts and washers
- 3x M10 nuts and washers
- 1x M3 washer
- 6x small knob
- 3x big knob
- 3x LED lens



Bag contains:



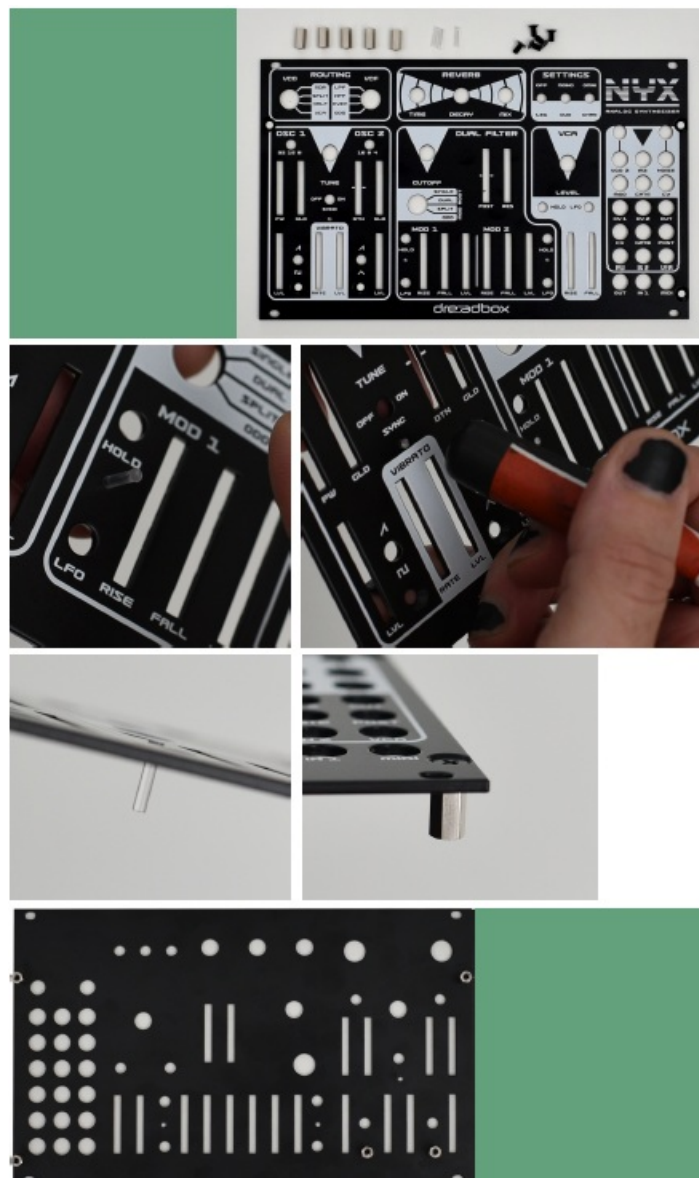
Additionally, you will need to have:

- A flat 1,5mm wide screwdriver for the knobs
- A PH1 screwdriver
- A 10mm Allen key
- A 11mm Allen key

Product Usage Instructions

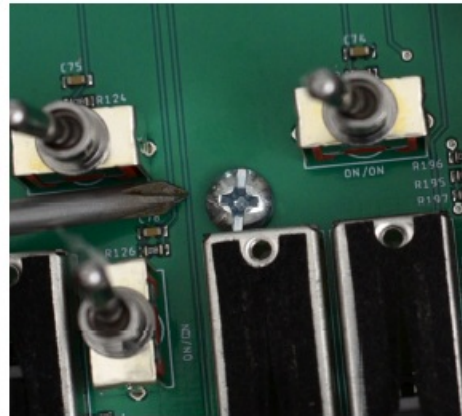
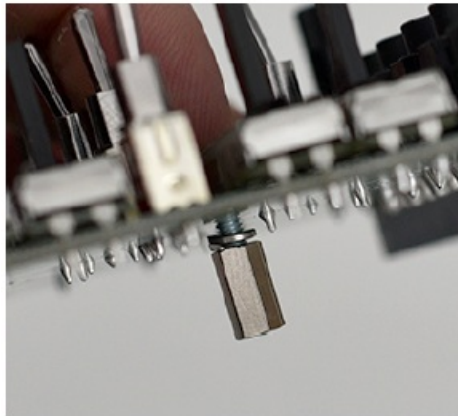
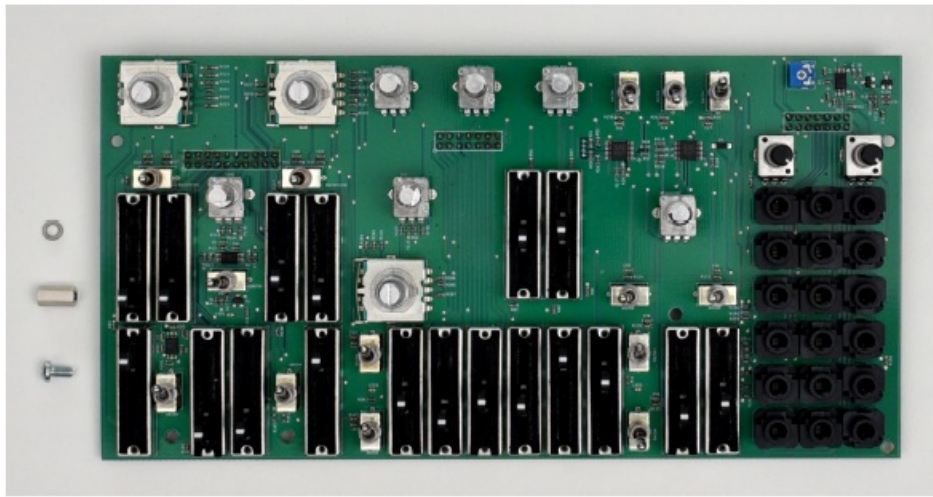
1. Step 1: Front Panel Assembly

On the front panel add the LED lens and push them with the soft end of the screwdriver so that they stick firmly in place. Then add 5x10mm metal spacers with 5xM3 black screws as shown.



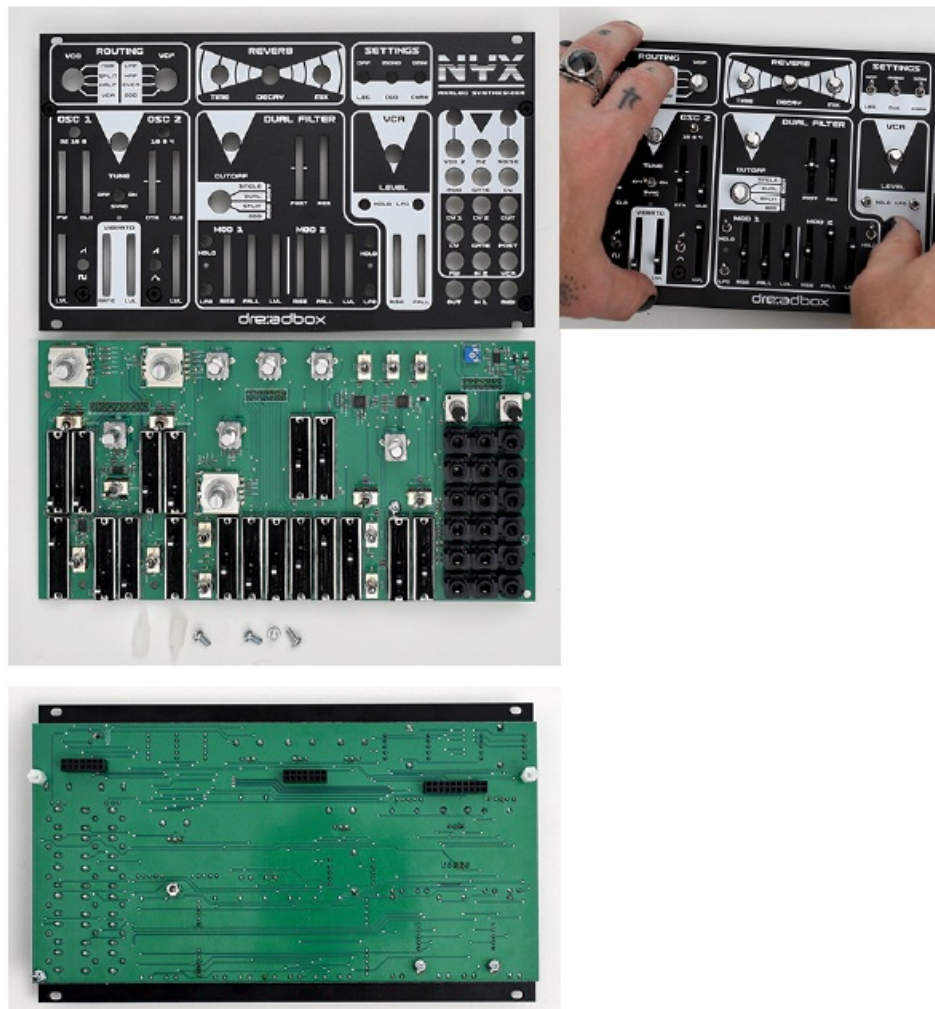
2. Step 2: Top PCB Assembly

On the top PCB above the 2nd slider to the right as shown in the picture, add an M3 brass screw through the front side and secure it with the M3 washer + a 10mm metal spacer from the bottom side. Make sure the screw is tight enough to straighten the washer.



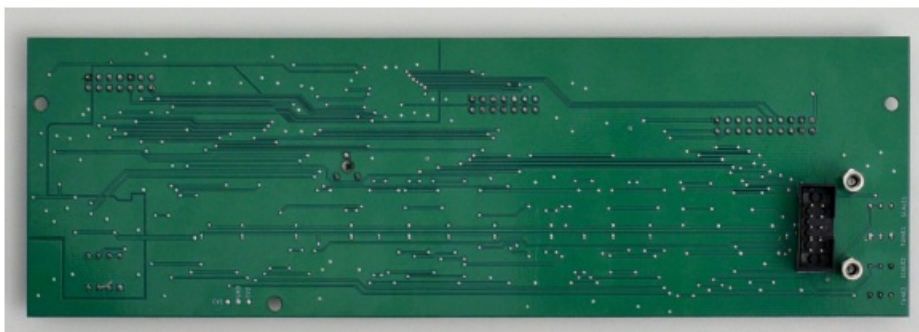
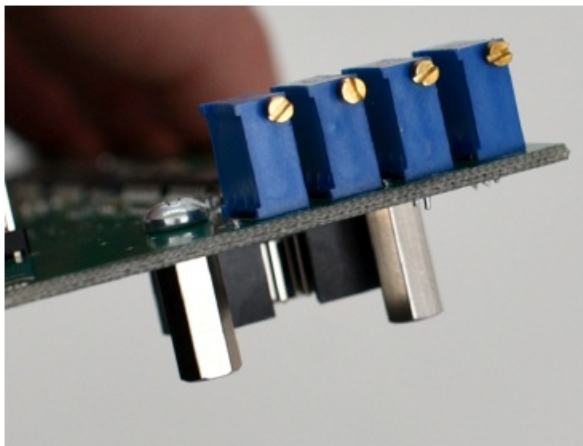
3. Step 3: Panel Attachment

Insert the top PCB to the panel as shown, it needs some pressure and alignment of the switches. You will need 2x11mm long M3 plastic spacers to be screwed into the 2 top corner holes and 3xM3 brass screws to be screwed into the 3 bottom holes. All from the underside of the top PCB to attach the panel to the top PCB as shown.



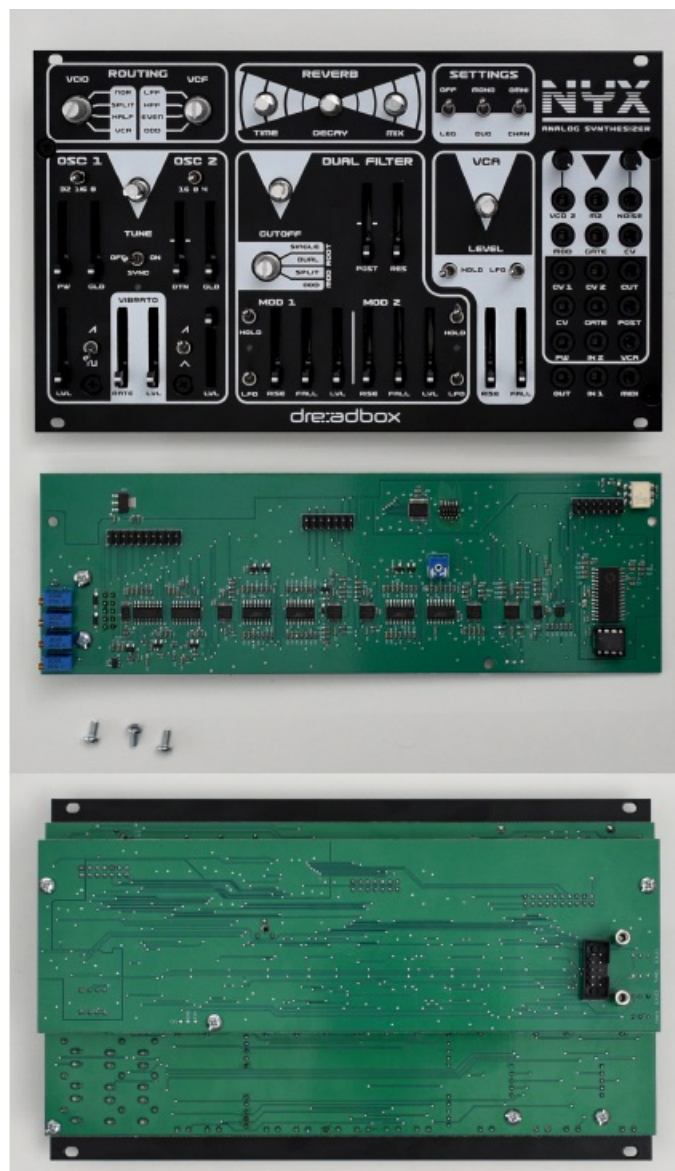
4. Step 4: Bottom PCB Setup

On the bottom PCB, screw the 2x12mm metal spacers with 2xM3 brass screws as shown (they will serve as the power supply base).



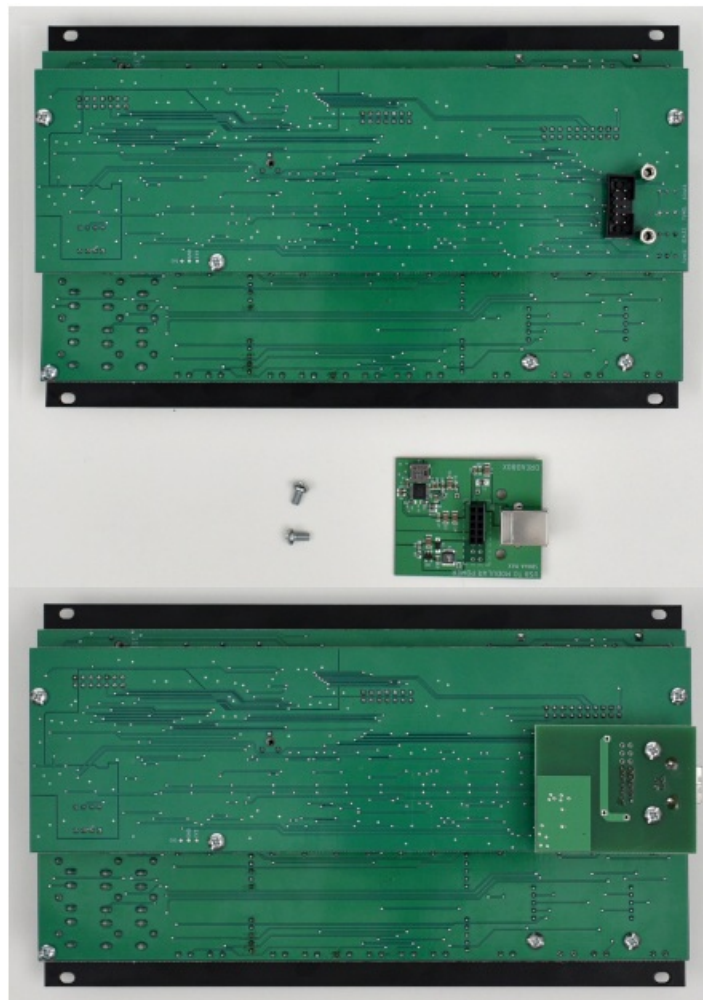
5. Step 5: Connect PCBs

Connect the bottom PCB to the top PCB and fix them with 3xM3 brass screws as shown.



6. Step 6: Power Board Attachment

Attach the power board to the assembly as shown and secure with 2xM3 brass screws.



7. Step 7: Adhesive Feet

Add the adhesive feet to the enclosure.



8. Step 8: Unit Placement

Place the unit in the metal enclosure. To easily achieve this, place the unit with the USB side first, and then push down the rest.



9. Step 9: Enclosure Fixation

Screw in 4xM3 black screws to secure the unit inside the enclosure.



10. Step 10: Knob and Switch Installation

Screw in the pots and rotary switches, taking care that the rotary switches should not be overtightened but not too loose. The M10 nuts are for the rotary switches and the M8 for the pots.



11. Step 11: Knob Attachment

Screw the knobs to the pots and rotary switches as shown.



Congratulations! Enjoy your new synth unit!

FAQ


Q: What tools do I need for assembly?

A: You will need a flat 1.5mm wide screwdriver, PH1 screwdriver, 10mm Allen key, and an 11mm Allen key for assembly.

Q: How do I attach the LED lens to the front panel?

A: Use the soft end of a screwdriver to push the LED lens firmly into place on the front panel.

Documents / Resources

	<p>NYX 1SZD Dreadbox Analog Synthe Izer [pdf] Instruction Manual</p> <p>1SZD Dreadbox Analog Synthe Izer, 1SZD, Dreadbox Analog Synthe Izer, Analog Synthe Izer, Synthe Izer</p>
---	--

References

- [User Manual](#)

[Manuals+.](#) [Privacy Policy](#)

This website is an independent publication and is neither affiliated with nor endorsed by any of the trademark owners. The "Bluetooth®" word mark and logos are registered trademarks owned by Bluetooth SIG, Inc. The "Wi-Fi®" word mark and logos are registered trademarks owned by the Wi-Fi Alliance. Any use of these marks on this website does not imply any affiliation with or endorsement.