



NXT TECHNOLOGIES 2.4G Bluetooth Wireless Mouse User Manual

[Home](#) » [NXT TECHNOLOGIES](#) » **NXT TECHNOLOGIES 2.4G Bluetooth Wireless Mouse User Manual** 

Contents

- [1 NXT TECHNOLOGIES 2.4G Bluetooth Wireless Mouse](#)
- [2 Overview](#)
- [3 2.4G Connection](#)
- [4 Bluetooth Connection](#)
- [5 Mac OS System](#)
- [6 Ways of Mode Switching](#)
- [7 FCC Statement](#)
- [8 Documents / Resources](#)
- [9 Related Posts](#)

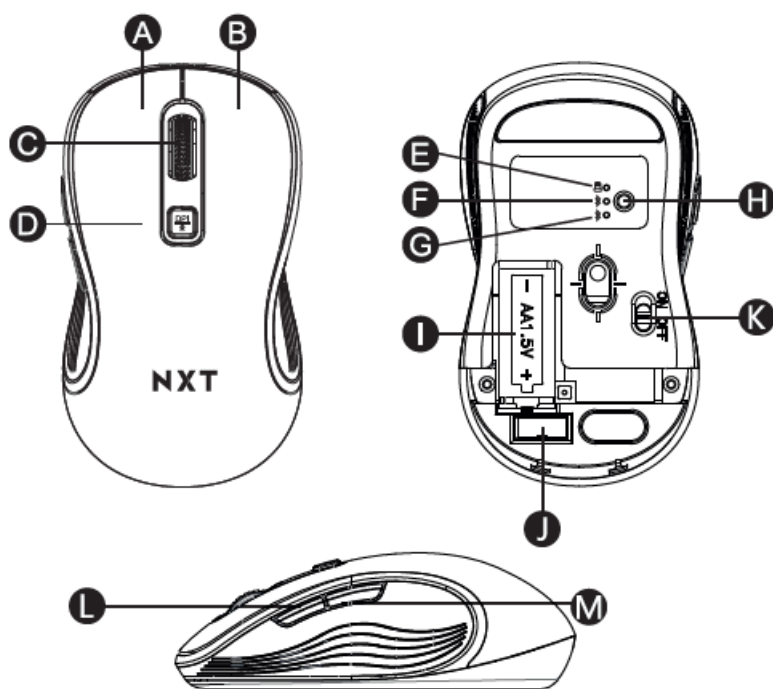
NXT

NXT TECHNOLOGIES 2.4G Bluetooth Wireless Mouse



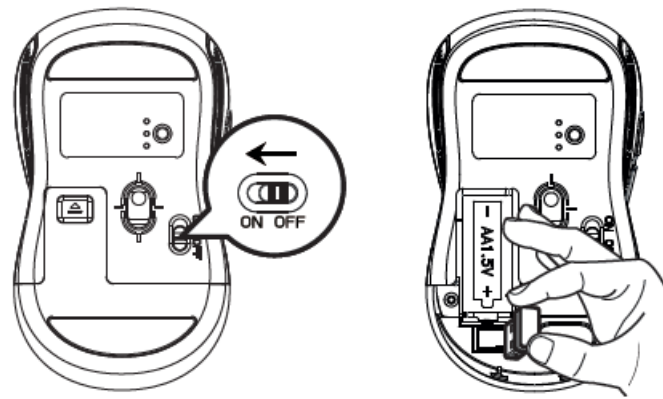
Please read the user's manual before installation

Overview

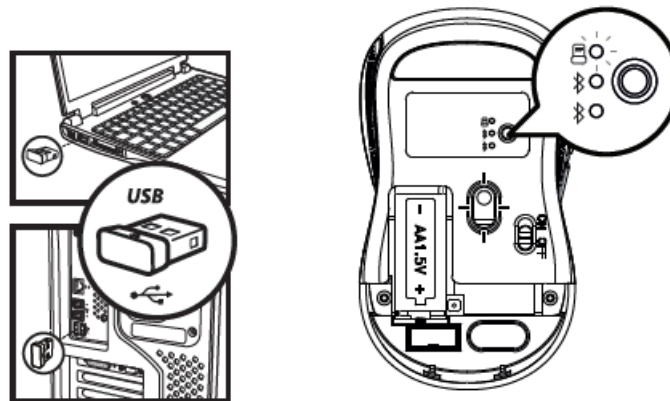


- Left Button
- Scroll Wheel
- USB Indicator Bluetooth
- Indicator Battery Bay
- On/Off
- Back Button
- Right Button
- DPI/Hyper
- Scroll Bluetooth
- Indicator Mode
- Switch Button
- USB Receiver
- Forward Button

2.4G Connection

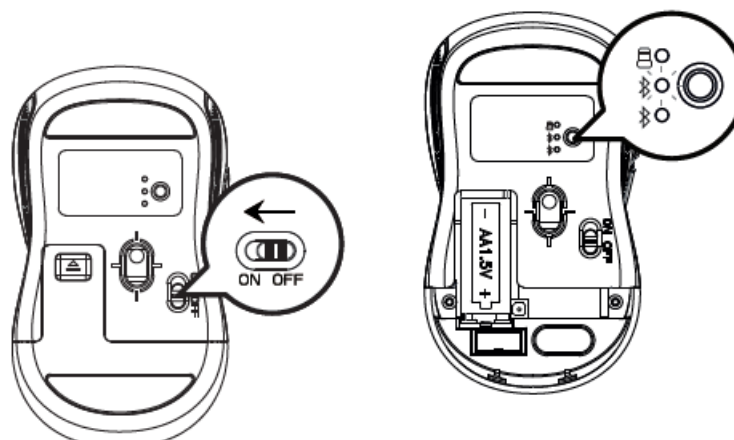


1. Turn on the mouse.
2. Remove the USB receiver.
3. Insert the USB receiver into computer USB port.
4. Press the mode switch to 2.4G mode until red LED is on.



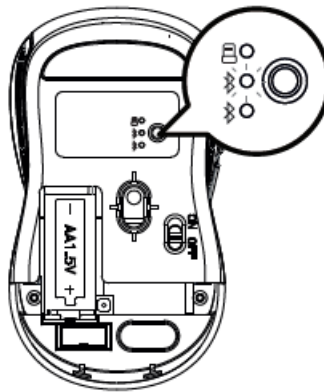
Bluetooth Connection

Windows System (Take Windows 10 and Bluetooth 1 as an example)

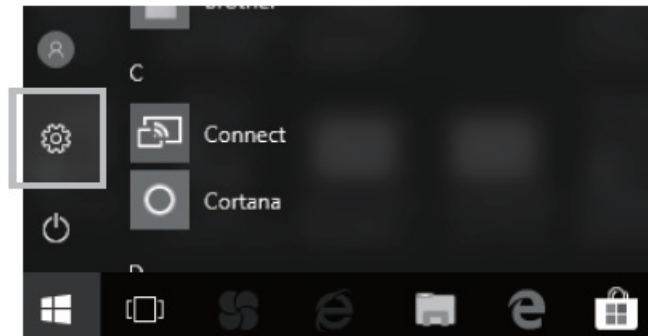


1. Turn on the mouse
2. Press the toggle button until the blue light flashes slowly.
3. Press the toggle button for 3~5 seconds until the blue light flashes quickly. The mouse will be at Bluetooth

pairing mode this moment.



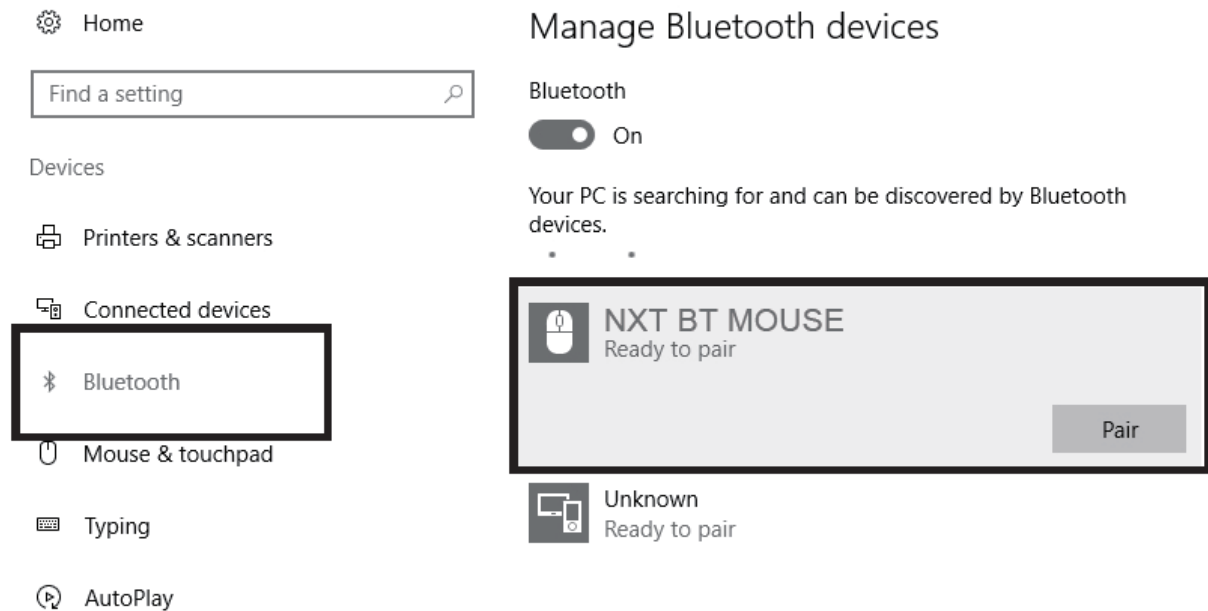
4. Click the “Bluetooth devices”button in the computer.



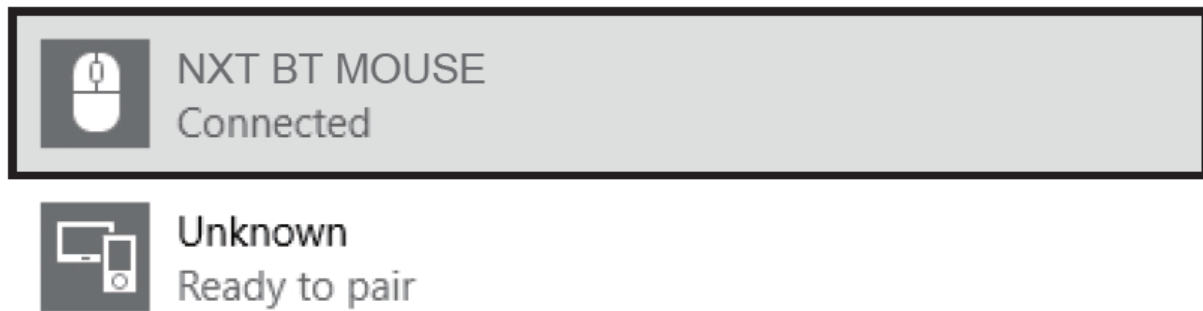
5. Click the “Add or remove Bluetooth devices”button.



6. Search the Bluetooth “NXT BT MOUSE”,and click Pairing button.



7. While the Bluetooth “NXT BT MOUSE” is connected, the mouse can be used normally.

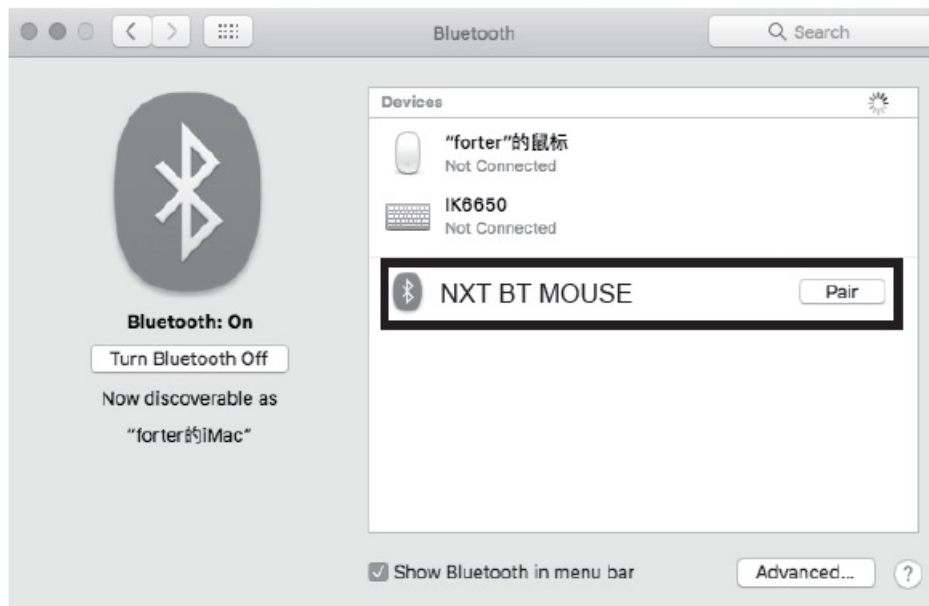


Mac OS System

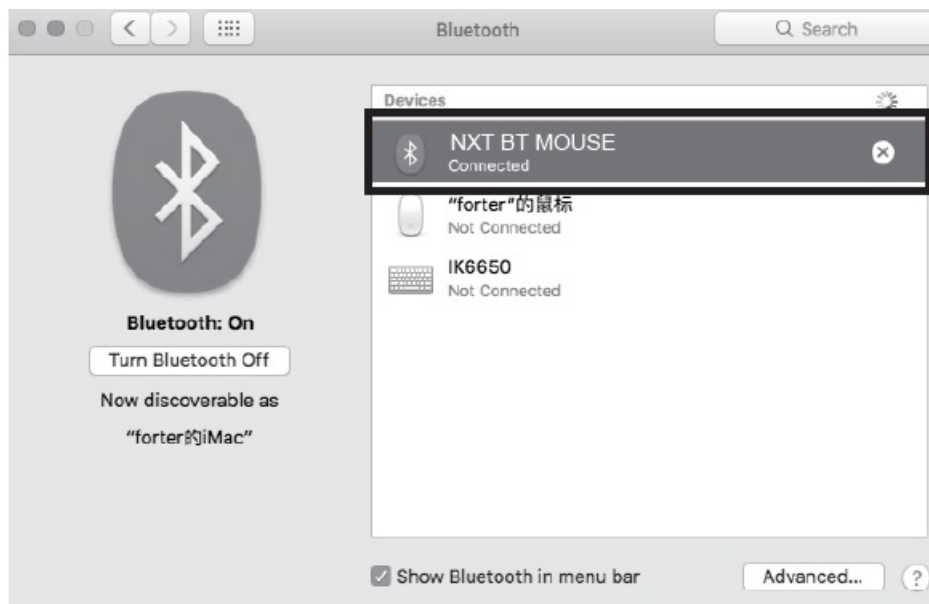
Please operate the Bluetooth installation steps(1~3) before pairing. Click the “system preferences” button on the Mac.



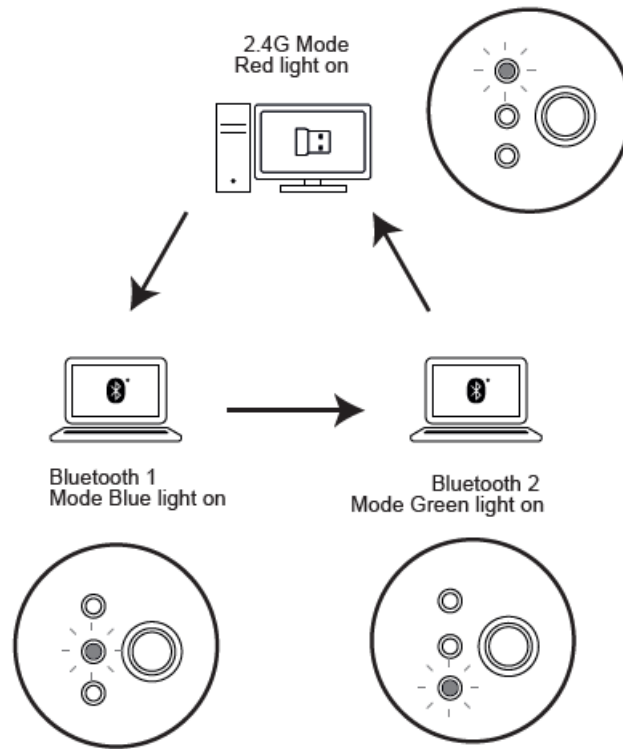
Click the Bluetooth button on the system preference folder.



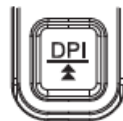
Search the Bluetooth “NXT BT MOUSE”,and click Pairing button.If installed completely,the mouse can be used normally.



Ways of Mode Switching



When Bluetooth and 2.4G connected successfully, shortly press the multi-mode toggle button, and you can switch the modes easily. Shortly press the multi-mode toggle button at the bottom of mouse. Ways of switching DPI and hyper scroll function



1. Short press this button to enter hyper scroll mode, then scroll the wheel, the hyper scroll function starts to work. Hyper scroll function will last for 16 seconds and then stop.
2. You could short press this button again to stop the hyper scroll function. Or you could slightly scroll the wheel again to stop it.
3. Long press this button for 3 seconds to switch the DPI. The indicators under the scroll wheel will flash once to show 1000 DPI, flash twice to show 2400 DPI and flash three times to show 3200 DPI. (Colors of the indicator depend on the modes you are connecting)

Please note: The indicator beneath the scroll wheel will flash when the mouse battery is low.
Basic Parameters

- Mouse Resolution: 1000-2400-3200 DPI
- Mouse Size: 10.85*6.13*3.71 CM
- Mouse Button Life: Over 3 million
- Transmission Distance: 8 meters
- Work Voltage: 1.5V
- System needs
 - Bluetooth receiver device
 - USB interface
 - Windows® 8, Windows® 10 or higher versions

- Mac OS X 10.10 or higher versions
- Android 4.3 or higher versions

Package Include

1. 1 x Wireless Mouse
2. 1 x USB Receiver
3. 1 x User Manual
4. 1 x AAA Battery

FCC Statement

This device complies with part 15 of the FCC Rules. Operation is subject to the following two conditions:

1. This device may not cause harmful interference, and
2. This device must accept any interference received, including interference that may cause undesired operation.

Any Changes or modifications not expressly approved by the party responsible for compliance could void the user's authority to operate the equipment.

Note: This equipment has been tested and found to comply with the limits for a Class B digital device, pursuant to part 15 of the FCC Rules. These limits are designed to provide reasonable protection against harmful interference in a residential installation. This equipment generates uses and can radiate radio frequency energy and, if not installed and used in accordance with the instructions, may cause harmful interference to radio communications. However, there is no guarantee that interference will not occur in a particular installation. If this equipment does cause harmful interference to radio or television reception, which can be determined by turning the equipment off and on, the user is encouraged to try to correct the interference by one or more of the following measures:

- Reorient or relocate the receiving antenna.
- Increase the separation between the equipment and receiver.
- Connect the equipment into an outlet on a circuit different from that to which the receiver is connected.
- Consult the dealer or an experienced radio/TV technician for help.

IC Statement

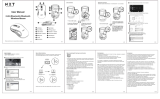
This device contains license-exempt transmitter(s)/receiver(s) that comply with Innovation, Science and Economic Development Canada's license exempt RSS(s). Operation is subject to the following two conditions:

1. This device may not cause harmful interference, and
2. This device must accept any interference received, including interference that may cause undesired operation of the device.

CAN ICES-3 (B)/NMB-3(B)

This device meets the exemption from the routine evaluation limits in section 2.5 of RSS 102 and compliance with RSS 102 RF exposure users can obtain Canadian information on RF exposure and compliance. The device has been evaluated to meet general RF exposure requirement. The device can be used in portable exposure condition without restriction.

Documents / Resources



[NXT TECHNOLOGIES 2.4G Bluetooth Wireless Mouse](#) [pdf] User Manual
D1123A7, 2AAVD-D1123A7, 2AAVDD1123A7, 2.4G Bluetooth Wireless Mouse, Wireless Mouse