



# NXT Power Emily2 USB Monitoring Software User Manual

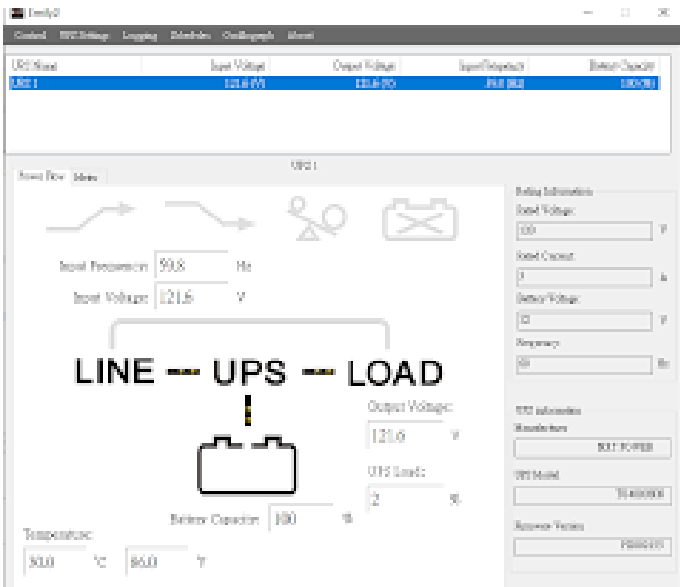
[Home](#) » [NXT POWER](#) » [NXT Power Emily2 USB Monitoring Software User Manual](#) 

## Contents

- 1 [NXT Power Emily2 USB Monitoring Software](#)
- 2 [Product Information](#)
- 3 [Product Usage Instructions](#)
- 4 [Installation Instructions](#)
- 5 [Uninstall Emily2](#)
- 6 [Function Descriptions](#)
- 7 [Documents / Resources](#)



## NXT Power Emily2 USB Monitoring Software



## Product Information

- **Product Name:** Emily2
- **Compatibility:** Microsoft Windows XP, Microsoft Windows Vista, Microsoft Windows 7, Microsoft Windows 8, Microsoft Windows 10, Microsoft Windows Server 2003, Microsoft Windows Server 2008, Microsoft Windows Server 2012, Microsoft Windows Server 2016, Microsoft Windows Server 2019
- **Functions:** Real Time Information, UPS Rating and Information, Function Selection, Pop-up Message

## Product Usage Instructions

### Installation Instructions

System requirements

- **Operating OS:** Windows XP / Vista / 7 / 8 / 10, Windows Server 2003/2008/2012/2016/2019
- **Peripherals:** RS-232 or

### USB 1.2 Install Emily2

- Step 1. Please login as an Administrator.
- Step 2. Double click Setup.msi to Install the Emily2.
- Step 3. Click Next to proceed to the next step.
- Step 4. If the user wants to change the installing directory, click Browse. Otherwise, click Next to proceed.
- Step 5. Click Next to proceed.
- Step 6. The Emily2 program will be installed.
- Step 7. Click Close to finish the installation.

### Uninstall Emily2

- Step 1. Go to Settings on your computer and select Apps & features.
- Step 2. Select Emily2 and click Uninstall.
- Step 3. Click Uninstall to confirm the removal of Emily2.
- Step 4. The Emily2 icon will disappear from the Apps & features page after the uninstallation process.

### Function Descriptions

Real-Time Information

- This section provides information about Flow Format Page & Meter Format Page, including
- Input Voltage of UPS
- Output Voltage of UPS
- Input Frequency of UPS
- Load level of UPS
- UPS status
- Power Flow Format Page & Meter Format Page 2.2 UPS Rating and Information

### Display Area

- This section provides details about UPS rating and information.

## Function Selection Area

- This section provides details about the function selection area.

## Pop-up Message

- This section provides information about pop-up messages.

**Note:** For detailed information and descriptions of each function, please refer to the respective sections mentioned in the user manual.

## Installation Instructions

### System requirements

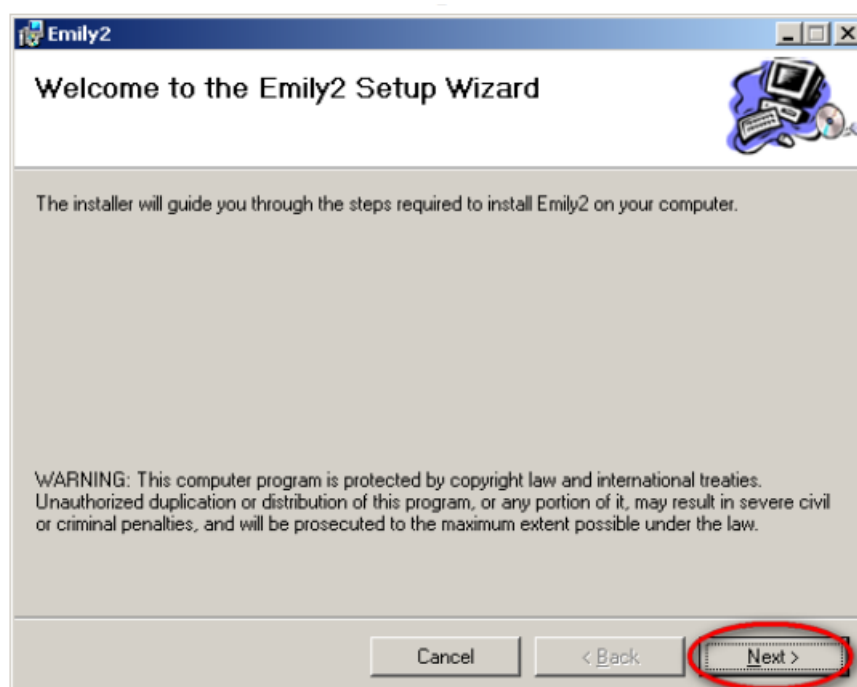
- **Operating OS:** Windows XP / Vista / 7 / 8 / 10, Windows Server 2003/2008/2012/2016/2019
- **Peripherals:** RS-232 or USB

### Install Emily2

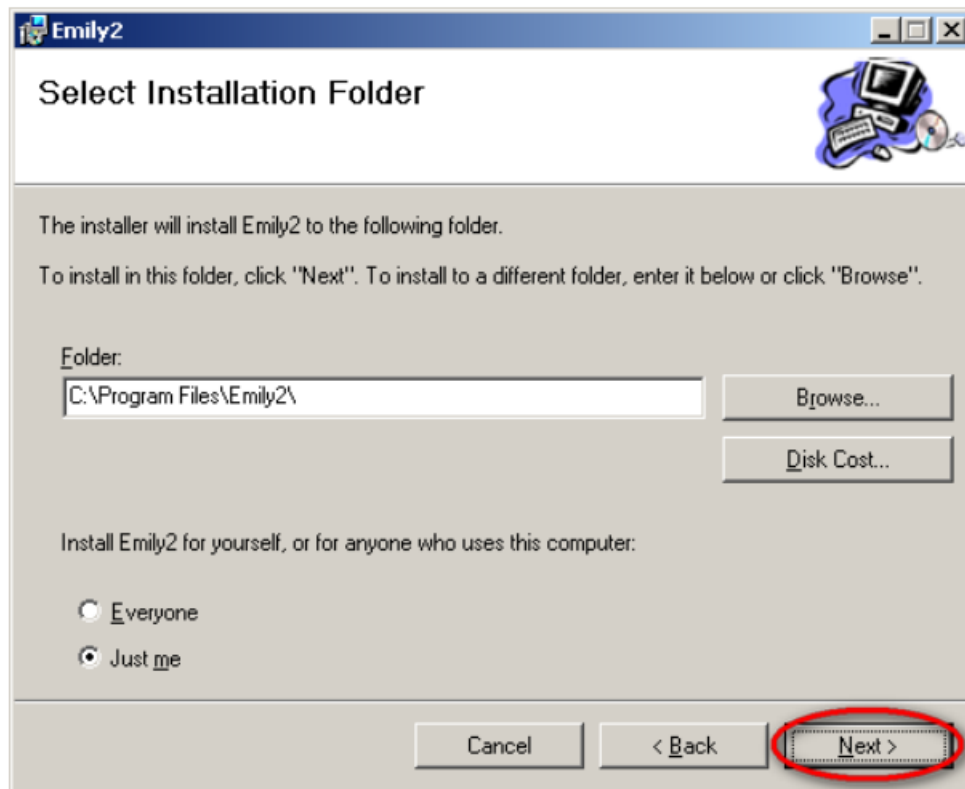
- Step1. Please login as an Administrator.
- Step2. Double click "Setup.msi" to Install the Emily2.



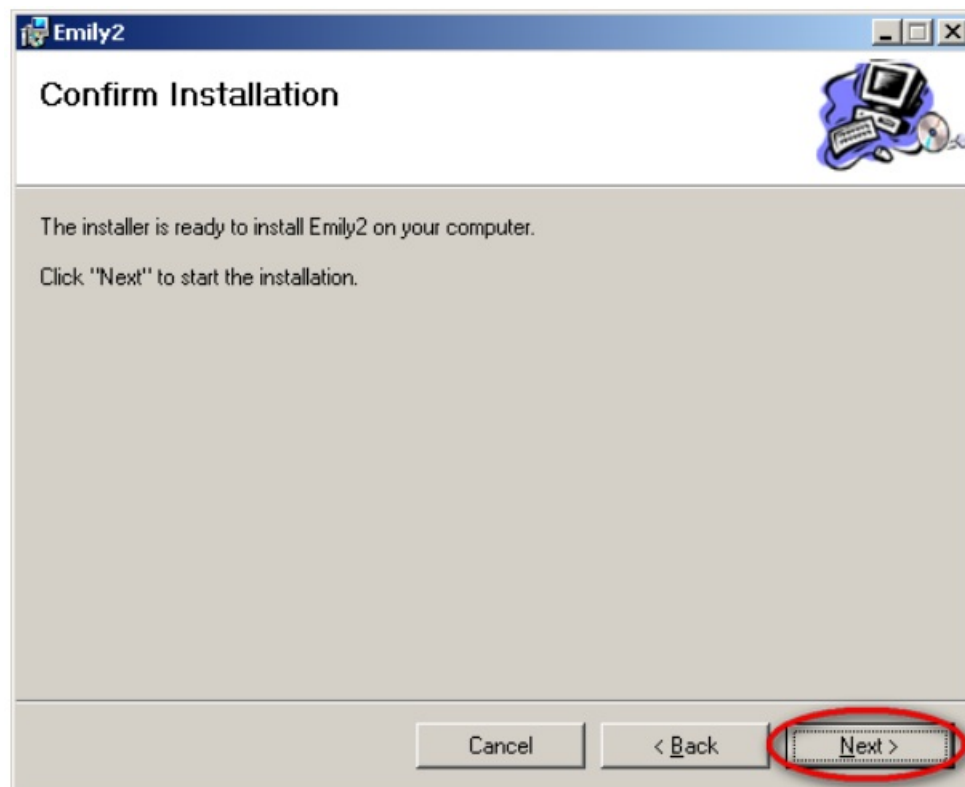
- Step3. Click "Next" to the next step.



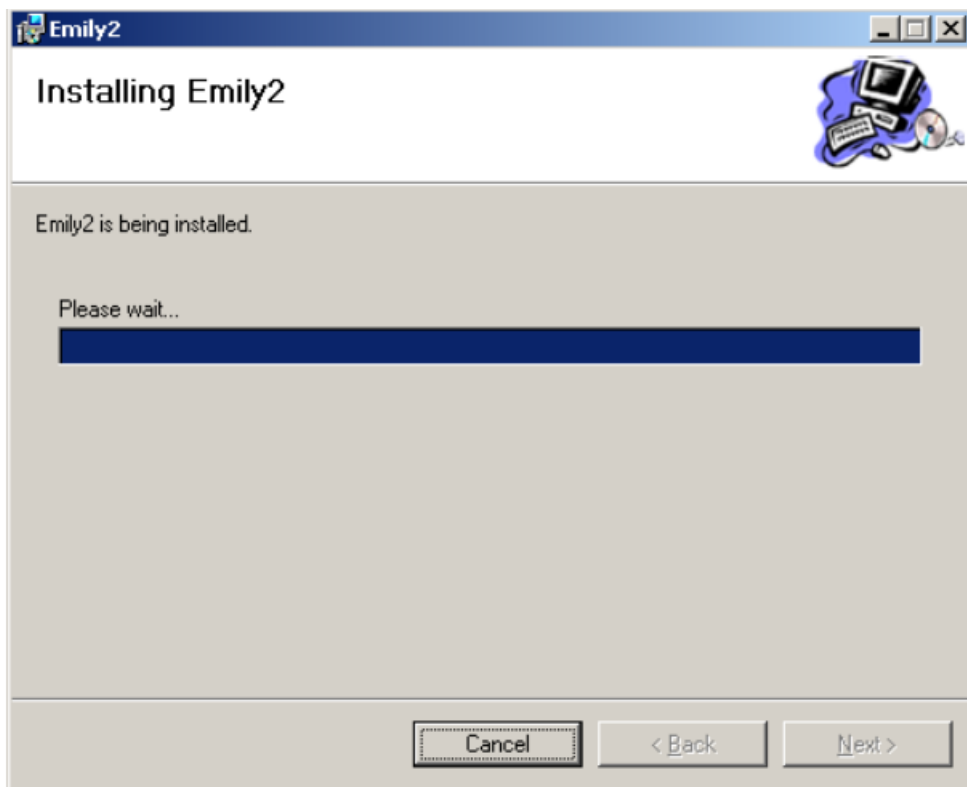
- Step4. Click "Browse", if user wants to change the installing directory. Otherwise, click "Next" to next step.



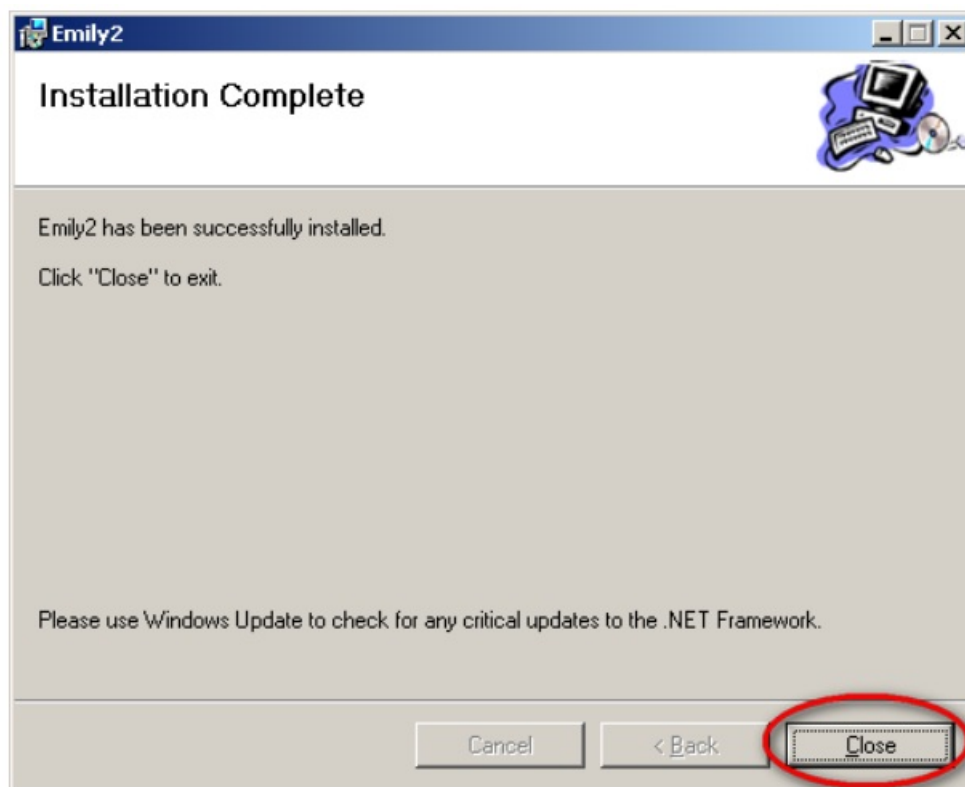
- Step5. Click "Next" to next step.



- Step6. Installing Emily2 program.



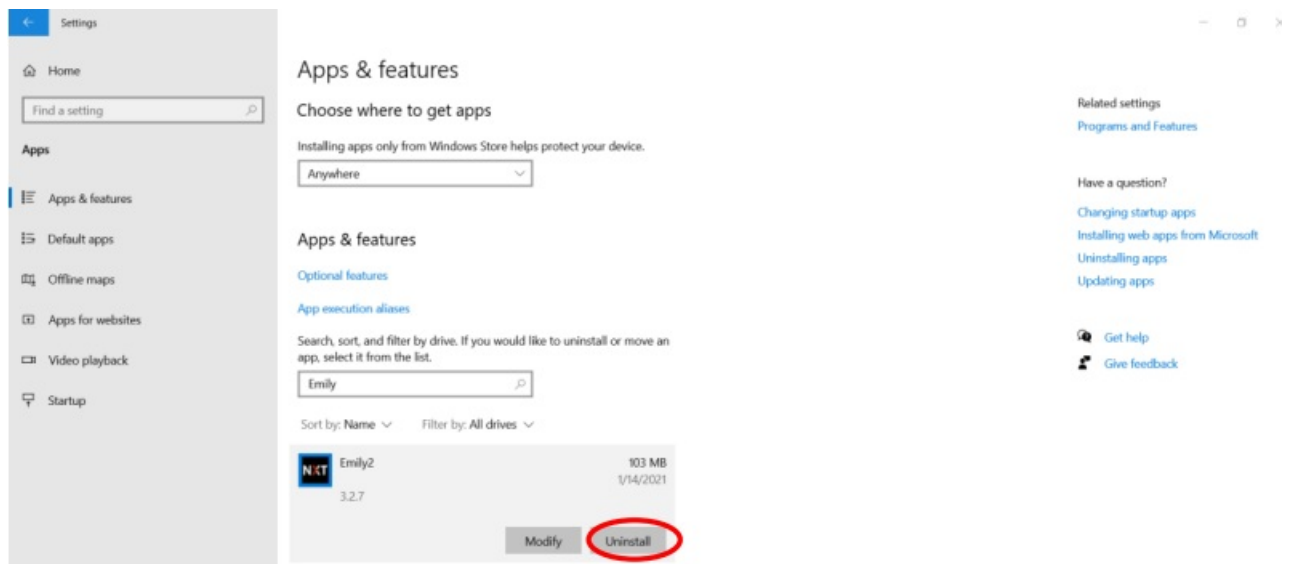
- Step7. Click "Close" to finish the installation.



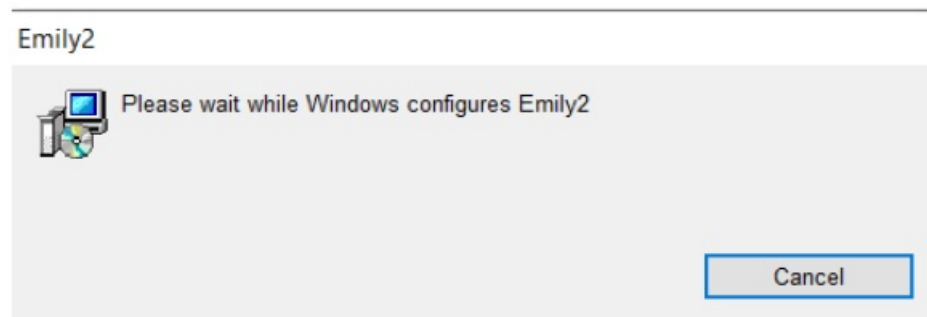
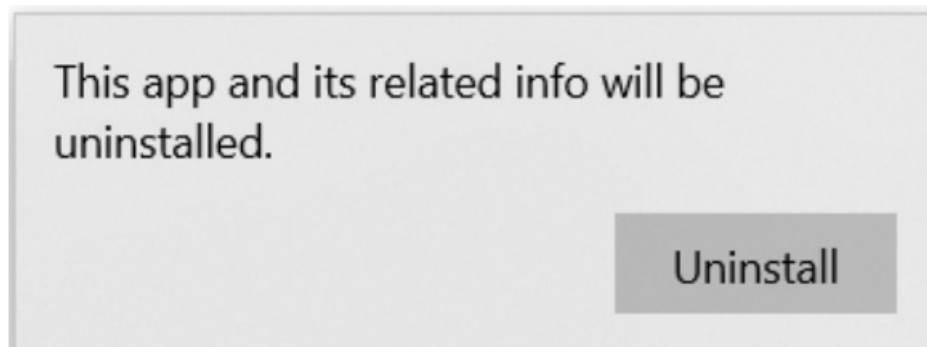
## Uninstall Emily2

### Remove Emily2

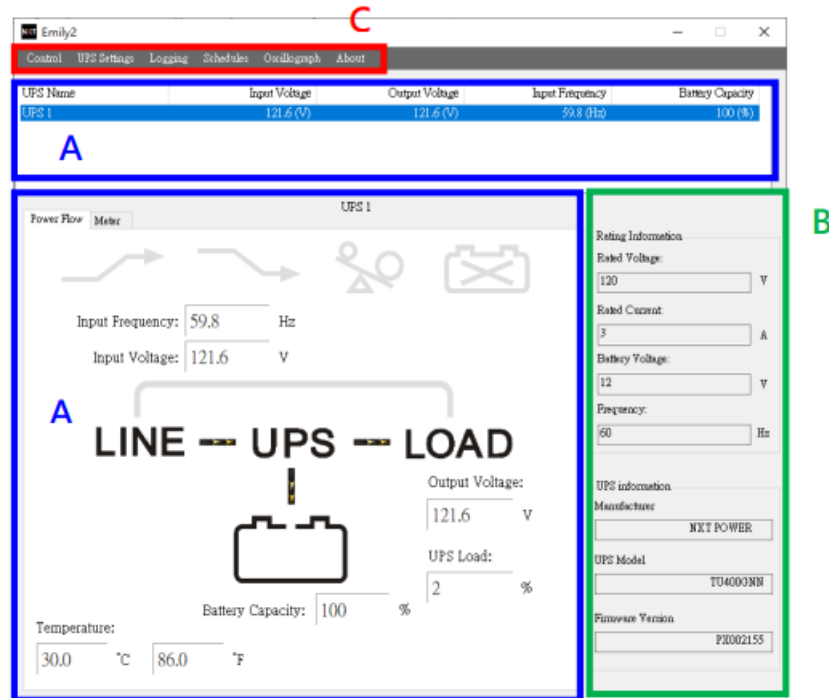
- Step1. Go to Settings from your computer and select "Apps & features". Step2. Select "Emily2" and click "Uninstall" as the following picture.



- Step3. Click “Uninstall” to confirm removing the Emily2.
- Step4. Emily2 icon will disappear in the “Apps & feature” page after uninstall process uninstall.



## Function Descriptions



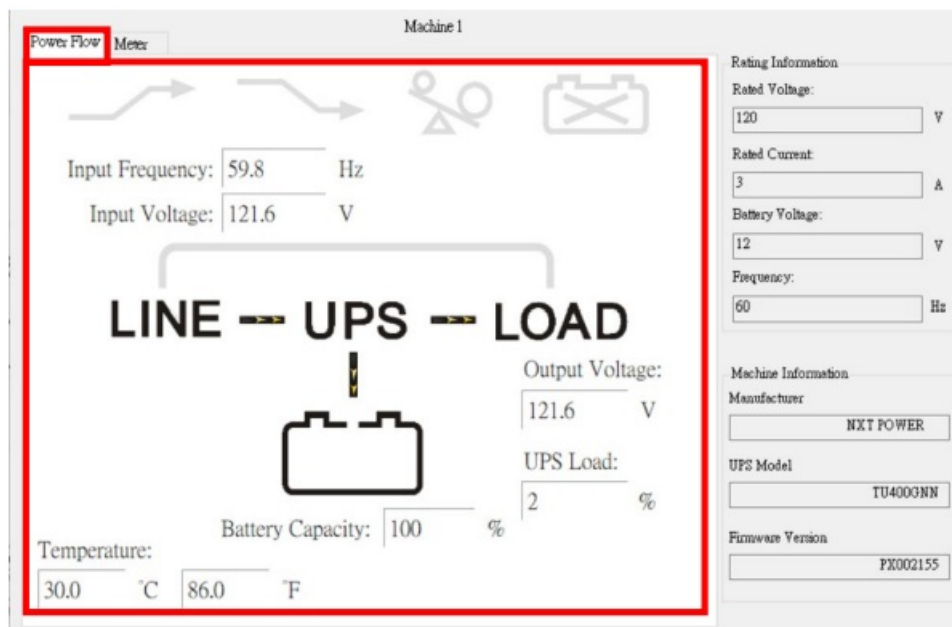
- **A. UPS real-time information and status:** Detail in section 2.1
- **B. UPS rating and information display area:** Detail in section 2.2
- **C. Function selection area:** Detail in section 2.3

### Real-Time Information

Please refer below section for Flow Format Page & Meter Format Page.

- Input Voltage of UPS
- Output Voltage of UPS
- Input Frequency of UPS
- Load level of UPS
- UPS status
- Power Flow Format Page & Meter Format Page

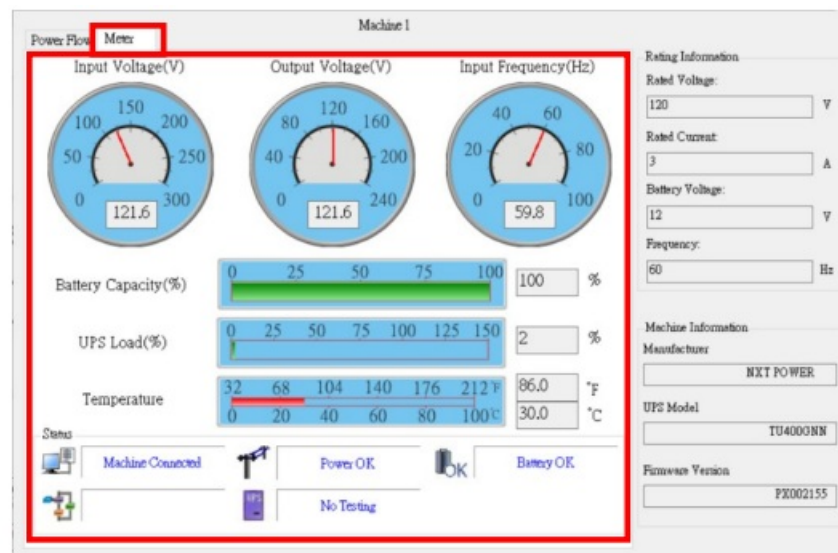
### Power Flow page



## Symbols Description



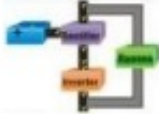




Item	Symbols	Description
1		Boost
2		Buck
3		UPS Overloading
4		Battery Abnormal
5		Battery Normal
		Battery Low
6		Power flow figure





## Symbols Description

Item	Symbols	Description
1		UPS is connected successfully to the computer
		The connection between the UPS & the Computer is disrupted
2		Utility Power Normal
		The utility power is absent or abnormal conditions
3		Battery Level Normal
		Battery Low. The UPS battery is near to end of discharge or is

		at low power level (2 Icon swap)
		UPS Battery Abnormal
4		ON Line Model
		OFF Line Model
5		Under self test
6		Bypass mode(2 Icon swap)
		

## UPS Rating and Information

### Rating Information

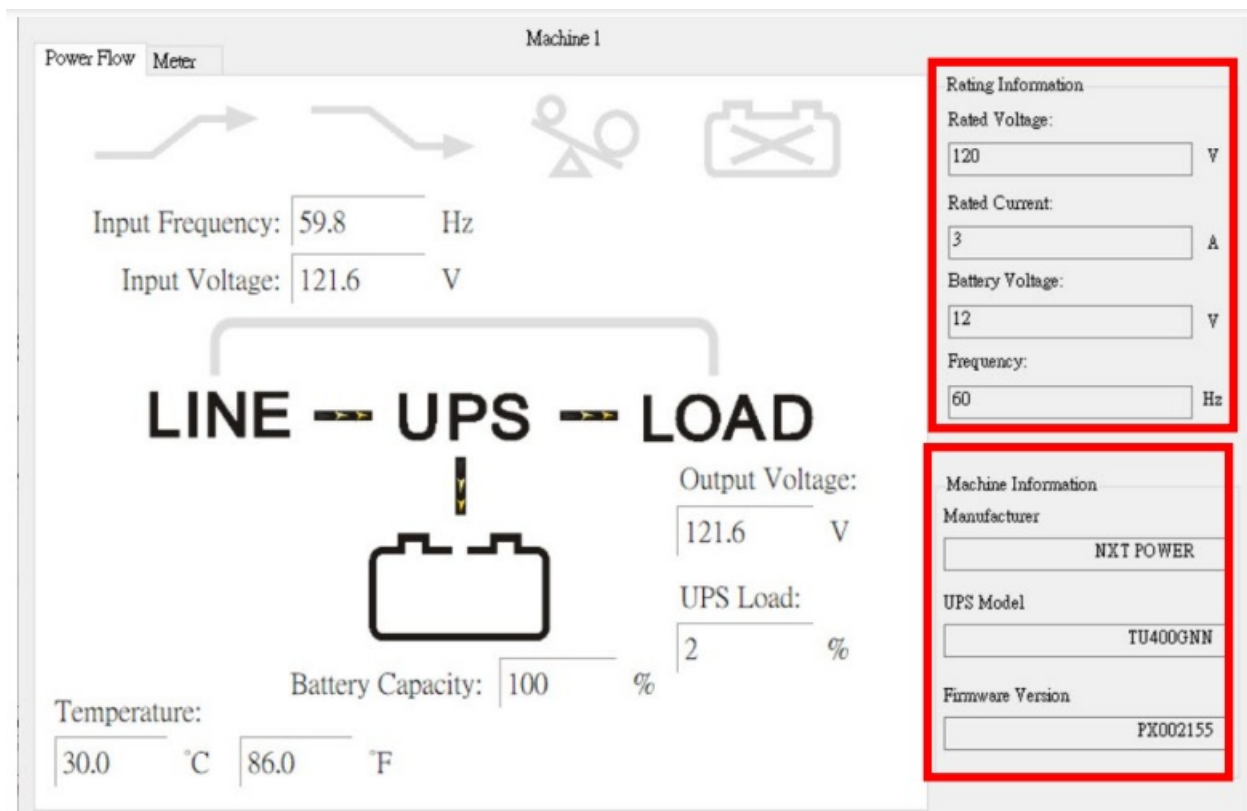
Provides rating of UPS such as

- Rating Voltage
- Rating Current
- Battery Voltage
- Frequency

### Machine Information

Provides information of UPS such as

- Manufacturer
- UPS Model
- Firmware Version



### Function selection

This chapter will introduce how to use or configure for those specific function "Control", "General Setting", "E-mail", "Data Log", "Event Log", "Scheduling", "Oscillograph" and "About".

### Control

Command UPS directly for the following test.

- UPS Self-Test
- UPS Self-Test Test to battery low
- Cancel UPS Self-Test



### General Settings

Allows user to select and set the connecting RS-232/USB or Remote, set to Data Log function and set to turn of UPS or OS condition etc.

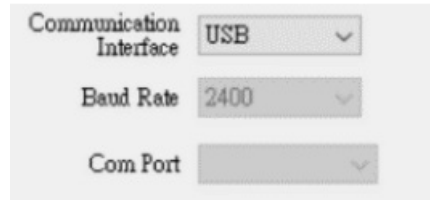
### Choose the Protocol.

**Standard:** for RS-232 or USB



Please refer to 2.3.2.5 for detail if choose the Remote.

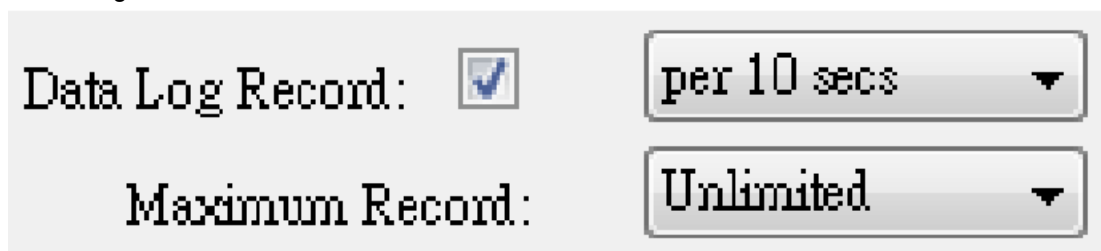
### Setting Communication Interface



- **Communication Interface** : USB / RS232
- **Baud Rate** : 2400bps/4800bps/9600bps
- **Con Port** :COM1~COMX

### Log Record setting

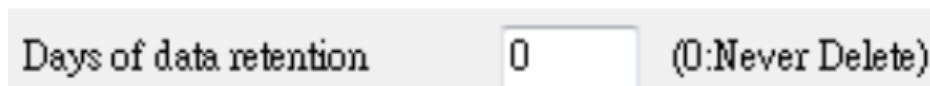
Enable the Data Log Record function



- Set Record timer interval
- Set data storage count of record list

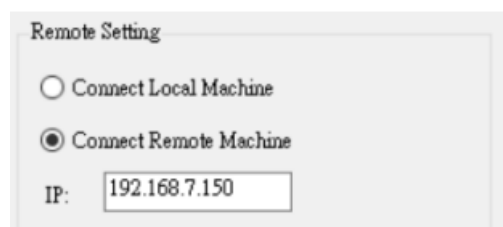
### Data retention setting

The time of data stored in a database can set by the user. If the value is “0”, it means database will never be deleted.



### Remote Setting

The “Connect Remote Machine” is for connecting the Emily2, which installed on another computer, and the IP address should be the master PC, which connected UPS.



### Note

With “Connect Remote Machine” you cannot send commands like Scheduling or UPS turn off.

### Unfinished APP log

If auto saving function is set, the Emily2 will display the closed record after restart.

☐ Display Closed Files Record on Emily2 Restart

Unfinished Log

### Optional command

Set the file to be executed before the system shutdown. The selectable time is from 0 min. to 2880 min.

Browse

1

Minute

OS Shutdown Delay After The Warning Time (Range: 0-2880)

### When Power Failure, OS Shutdown Warning Time

Set the Warning Time for system shutdown operation after Power Failure. The selectable time is from 0 min. to 2880 min.

☐ When Power Failure, OS Shutdown Warning Time (Range:0-2880)

10

Minute

### When Battery Low, OS Shutdown Warning Time

Set the Warning Time for system shutdown operation after Battery Low. The selectable time is from 0 min. to 2880 min.

☐ When Battery Low, OS Shutdown Warning Time (Range:0-2880)

0

Minute

### When Battery Capacity less than or equal the setting level, OS Shutdown Warning Time

Set the Warning Time for system shutdown operation after Battery Low. The selectable time is from 0 min. to 2880 min. The selectable time is from 0 min. to 2880min.

The selectable battery Capacity is form 0% to 90%.

☐ When Battery Capacity is less or equal (0-90)

20

%

OS Shutdown Warning Time (Range:0-2880)

1

Minute

### Turn off

UPS, UPS Output Shutdown Delay After warning Time time Set time interval from Windows shutdown to UPS turn-off. The selectable time is from 0.2 min. to 99min.

☒ Turn Off UPS

UPS Output Shutdown Delay After The Warning Time (Range: 0-99):

2

▼

Minute

### E-Mail Configuration

Configure to send the event message (e.g. AC Power Fail) to specific one by E-mail. The following section is for the detail configuration approach.

**E-Mail Configuration**

User Name: XXX

User Email Address: XXX@XXX.com

SMTP Server: XXX.com

Receiver Name: XXX

Subject: TEST Email

Mail To: XXXX@XXXX.com

Password:

SMTP Server Port:

**Send Setting**

<input type="checkbox"/> Communication Established	Mail message UPS connect
<input type="checkbox"/> Communication Lost	Mail message UPS disconnect
<input type="checkbox"/> OS Shutdown Started	Mail message System shutdown
<input type="checkbox"/> Power Failed	Mail message Power failure
<input type="checkbox"/> Low Battery	Mail message Battery low
<input type="checkbox"/> Power Restored	Mail message Power restored
<input type="checkbox"/> UPS Shutdown Started	Mail message UPS shutdown
<input type="checkbox"/> Over Load	Mail message Over load
<input type="checkbox"/> Battery Error	Mail message Battery weak
<input type="checkbox"/> UPS Self Testing	Mail message UPS test

OK Cancel

- A. Email Test

Click to send a test message to confirm the settings are correct.

- B. Account Settings

- **User Name:** Sender
- **User Email Address:** select a sender E-Mail
- **Password:** Password of your email server
- **SMTP Server:** SMTP server or IP address
- **SMTP Server port:** SMTP Server port
- **Receiver Name:** name of receiver
- **Mail To:** Mail address of receiver
- Subject: Subject of E-Mail

**Note** If you want to send an email to more than 1 email address, you must use “;” to separate email addresses.

- C. Send Setting

You can use the default message or set or modify your own in English.

- D. Save Setting

- Click “OK” to save and apply settings.
- **Note:** Internet Firewall may not allow this E-Mailing function.

## Data Log

The data log can be read directly via Emily2 or export to an file with xls or txt format for application. The following section is for the detail operation.

**Data Log**

UPS Name: UPS 1

Date: 2021/05/27

Update

Work Progress:

Export First Last

	Time	Input Voltage	Output Voltage	UPS Load	Input Frequency	Battery Capacity	Temperature
▶	2021/05/27 10:57:13	121.6	121.6	2	59.8	100	30
	2021/05/27 10:57:02	121.6	121.6	2	59.8	100	30
	2021/05/27 10:56:51	121.6	121.6	2	59.8	100	30
	2021/05/27 10:56:40	121.6	121.6	2	59.8	100	30
	2021/05/27 10:56:29	121.6	121.6	2	59.8	100	30
	2021/05/27 10:56:18	121.6	121.6	2	59.8	100	30
	2021/05/27 10:56:07	121.6	121.6	2	59.8	100	30
	2021/05/27 10:55:56	121.6	121.6	2	59.8	100	30
	2021/05/27 10:55:45	121.6	121.6	2	59.8	100	30
	2021/05/27 10:55:34	121.6	121.6	2	59.8	100	30
	2021/05/27 10:55:23	121.6	121.6	2	59.8	100	30
	2021/05/27 10:55:12	121.6	121.6	2	59.8	100	30
	2021/05/27 10:55:01	121.6	121.6	2	59.8	100	30
	2021/05/27 10:54:50	121.6	121.6	2	59.8	100	30
	2021/05/27 10:54:39	121.6	121.6	2	59.8	100	30

#### A area

Choose the “Date”, and click “Update” for data refreshing.

UPS Name: UPS 1

Date: 2021/05/18

Update

#### B area

- **Export:** Click to export the current data into “xls” or “txt” format.
- **First:** Click to go to the first recorded entry.
- **Last:** Click to go to the last recorded entry.

#### Event log

The event log can be read directly via Emily2 or export to an file with xls or txt format for application. The following section is for the detail operation.

The screenshot shows the 'Event Log' window. At the top, there's a header with 'UPS Name : UPS 1' and a date selector set to '2021/01' with a 'Select' button. Below this is a filter section (labeled 'B') with checkboxes for various events: Connect UPS, Disconnect UPS, Power Failure, Battery Low, UPS Failed / Battery disconnect, Self Test, Shutdown UPS, Over Load, Power Restored, Execute App, and Error Code. To the right of the filters are 'Select All', 'Clear', and 'Filter' buttons. Below the filters is a 'Work Progress' bar and three buttons: 'Export', 'First', and 'Last' (labeled 'C'). The main area is a table with columns 'Data Time', 'UPS Name', and 'Event'. The table contains 14 rows of event logs.

Data Time	UPS Name	Event
2021/01/14 12:48:13	UPS 1	Communication Lost
2021/01/14 12:48:33	UPS 1	Communication Established
2021/01/14 13:13:36	UPS 1	Power Failed
2021/01/14 13:13:45	UPS 1	Power Restored
2021/01/14 13:13:45	UPS 1	Shutdown Cancelled
2021/01/14 13:14:06	UPS 1	Power Failed
2021/01/14 13:14:07	UPS 1	OS Shutdown Started
2021/01/14 13:15:07	UPS 1	UPS Shutdown Started
2021/01/14 13:16:51	UPS 1	Communication Lost
2021/01/14 13:18:57	UPS 1	Communication Established
2021/01/14 13:20:04	UPS 1	Power Failed
2021/01/14 13:20:05	UPS 1	OS Shutdown Started

#### A area

Choose the “Date”, and click “Select” for data refreshing.

This close-up shows the 'Date : 2021/01' dropdown menu and the 'Select' button.

#### B area

Event log filter for read or export

#### C area

- **Export:** Click to export the current data into “xls” or “txt” format.
- **First:** Click to go to the first recorded entry.
- **Last:** Click to go to the last recorded entry.

#### Schedules

Emily2 supports the scheduling self test, turn-on and turn-off function for UPS. The following section is for the detail configuration approach.



Schedules

[UPS 1]	2021/01/30 15:13 Saturday	UPS Self-Test 10 second	Once
[UPS 1]	2021/01/30 17:13 Saturday	Shutdown Operating System and UPS	2021/01/30 17:15 Saturday Turn On UPS Once

A

Next Test Time

Next Shutdown Time

Next Restart Time

Add

Delete

Edit

Exit

### A area

- **Add:** Create a new task. Please refer to section 2.3.6.1 for detail
- **Delete:** Delete a task
- **Edit:** Edit a task Please refer to section 2.3.6.2 for detail
- **Exit:** Exit the Schedules

### Add Schedules

- A. Executive Time
  - **Date:** Date Setting.
  - **Time:** Time Setting.
  - **Frequency:** Set execute cycle of the schedule.
- B. Control
  - Self-test for 10 seconds.
  - Self-test for (1-99) minutes.
  - Self-test until Battery condition xx%
  - Self-test until Low Battery condition.
  - Shutdown Operating System and UPS or Turn on UPS
- C. **Function:** Add or Cancel schedule

Task

UPS Name : UPS 1

Date : 2021/01/14 Thursday

Time : 15:15

Frequency ☒ Once ☐ Daily ☐ Weekly ☐ Monthly

Control

☒ UPS Self-Test 10 second

☐ UPS Self-Test (1 - 99) 1 Minute

☐ UPS Self-Test until Battery condition 20 %

☐ UPS Self-Test until Low Battery condition

☐ Shutdown Operating System and UPS

☒ Turn On UPS

Add Cancel

### Edit Schedules

Frist, Select the schedule you want to modify. And click "Edit" to modify task.

Schedules

[UPS 1]	2021/01/30 15:13 Saturday	UPS Self-Test 10 second	Once
[UPS 1]	2021/01/30 17:13 Saturday	Shutdown Operating System and UPS	2021/01/30 17:15 Saturday Turn On UPS Once

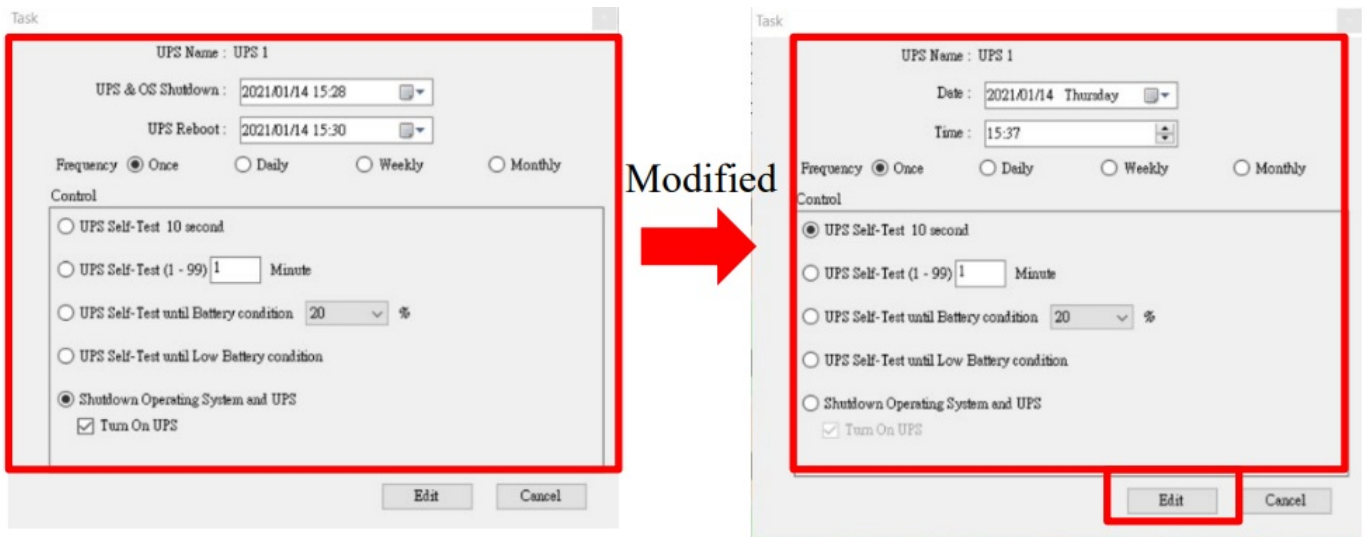
Next Test Time 1/30/2021 3:13:00 PM

Next Shutdown Time 1/30/2021 5:13:00 PM

Next Restart Time 1/30/2021 5:15:00 PM

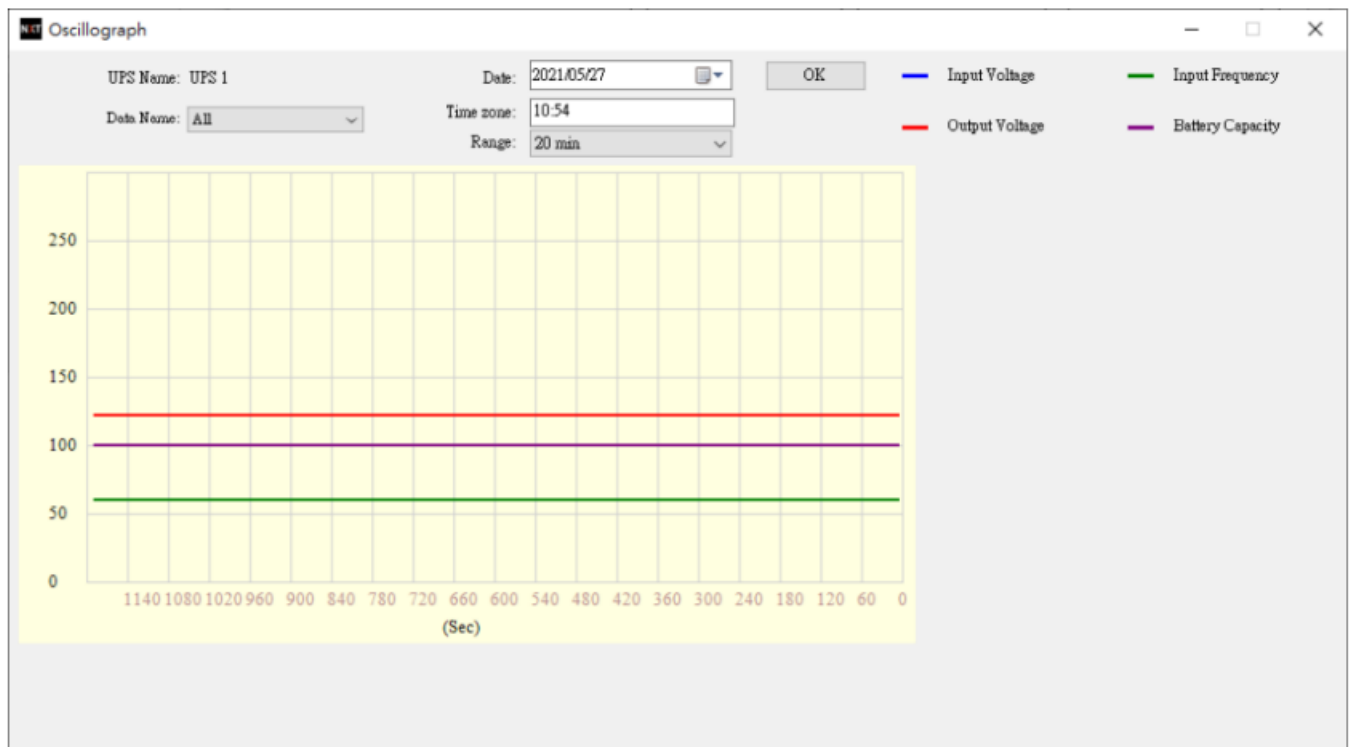
Add Delete Edit Exit

Click "Edit" to modify and save this task.



## Oscilloscope

It is visual data curve for easy check.



## About

It displays copyright and version information of Emily2.




### Pop-up message

When event occurred (e.g. power fail battery low ... etc.), Emily2 will pop up a message to remind the user to handle it.



### Documents / Resources

 <p>Emily2 User Manual</p> <p>For  Microsoft Windows 10  Microsoft Windows Vista  Microsoft Windows 7  Microsoft Windows 8  Microsoft Windows 10  Microsoft Windows Server 2008  Microsoft Windows Server 2008 R2  Microsoft Windows Server 2012  Microsoft Windows Server 2012 R2  Microsoft Windows Server 2016</p>	<p><a href="#">NXT Power Emily2 USB Monitoring Software</a> [pdf] User Manual</p> <p>Emily2 USB Monitoring Software, Emily2, USB Monitoring Software, Monitoring Software, Software</p>
--	---