



---

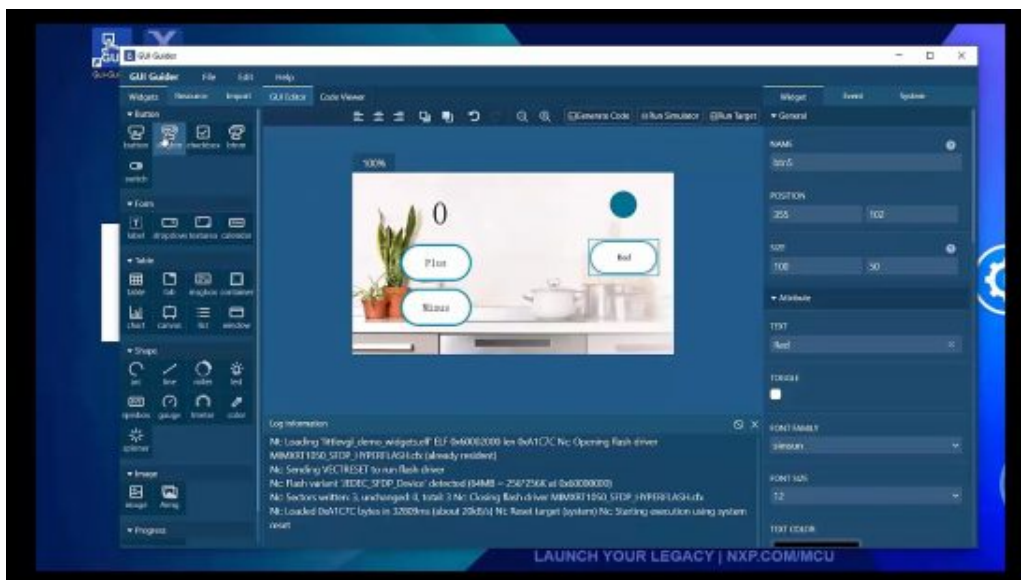
[Home](#) » [NXP](#) » **NXP V1.9.1 GUI Guider User Manual** 



## Contents [ [hide](#) ]

1	NXP V1.9.1 GUI Guider User Manual
2	1 Overview
3	2 V1.9.1 GA (Released on 30 April 2025)
4	3 V1.9.0 GA (Released on 22 January 2025)
5	4 V1.8.1 GA (Released on 30 September 2024)
6	5 V1.8.0 GA (Released on 31 July 2024)
7	6 V1.7.2 GA (Released on 19 April 2024)
8	7 V1.7.1 GA (Released on 29 March 2024)
9	8 V1.7.0 GA (Released on 31 January 2024)
10	9 V1.6.1 GA (Released on 28 September 2023)
11	10 V1.6.0 GA (Released on 31 July 2023)
12	11 V1.5.1 GA (Released on 31 March 2023)
13	12 V1.5.0 GA (Released on 18 January 2023)
14	13 V1.4.1 GA (Released on 30 September 2022)
15	14 V1.4.0 GA (Released on 29 July 2022)
16	15 V1.3.1 GA (Released on 31 March 2022)
17	16 V1.3.0 GA (Released on 24 January 2022)
18	17 V1.2.1 GA (Released on 29 September 2021)
19	18 V1.2.0 GA (Released on 30 July 2021)
20	19 V1.1.0 GA (Released on 17 May 2021)
21	20 V1.0.0 GA (Released on 15 January 2021)
22	21 Revision history
23	Legal information
24	Documents / Resources
	24.1 References

# NXP V1.9.1 GUI Guider User Manual



## Document information

Information	Content
Keywords	GUI_GUIDER_RN, IDE, GUI, MCU, MPU, LVGL, RTOS, Yocto Linux, QNX, FreeMASTER, VIT
Abstract	This document describes the released version of GUI Guider along with the features, bug fixes, and known issues.

# 1 Overview

GUI Guider is a user-friendly graphical user interface development tool from NXP that enables the rapid development of high-quality displays with the open-source LVGL graphics library. The drag-and-drop GUI Guider editor makes it easy to utilize the many features of LVGL, such as widgets, animations, and styles, to create a GUI with minimal or no coding at all.

With the click of a button, you can run your application in a simulated environment or export it to a target project. Generated code from GUI Guider can easily be added to an MCUXpresso IDE project, accelerating the development process and allowing you to add an embedded user interface to your application seamlessly.

GUI Guider is free to use with the NXP general purpose MCUs, crossover MCUs,

wireless MCUs, and MPUs. GUI Guider includes built-in project templates for supported platforms.

## 2 V1.9.1 GA (Released on 30 April 2025)

### 2.1 New features (Released on 30 April 2025)

- **UI development tool**

- Support more characters in the project name
- Custom folder path for code generation
- Code editor: autosave custom code change
- Video support and demo for i.MX
- Camera support and demo for i.MX
- Industrial demo on MCX: agriculture control
- Image converter: dither mode, stride auto-align

- **Benchmarking**

- VGLite demo: i.MX RT700 (800×480, 462×462, 392×392)
- Render performance optimization demo on i.MX RT1060EVKC with LVGL v9

- **Toolchain**

- MCUX SDK 25.03.00
- MCUX IDE 25.03.00/VSCode/ARMGCC/IAR/Keil upgrade

- **Targets**

- FRDM-MCXA276
- FRDM-RW612
- FRDM-IMX91

### 2.2 Known issues

- **LGLGUIB-1613:** An error message in the log window appears after successfully running “Run Target” on macOS

An error message appears on the log window when “Run Target” is completed on macOS, even if the application is deployed successfully on the board.

# 3 V1.9.0 GA (Released on 22 January 2025)

## 3.1 New features (Released on 22 January 2025)

- **UI development tool**

- Integrated VIT for voice driven HMI with LVGL v8: i.MX RT1060EVKC, i.MX RT1170EVKB
- Relative path reference to resource files
- Resizable simulator window for LVGL v9
- FreeMASTER support for LVGL v9
- Add smart building demo
- Improve aircon and progress bar demo
- New device and application prompt
- Unify the style of setting window

- **Library**

- LVGL v9.2.1

- **Toolchain**

- MCUXpresso SDK 24.12.00
- MCUXpresso IDE 24.12.00
- MCUXpresso for VSCode
- ARMGCC/IAR/Keil upgrade
- Zephyr v4.0 support for LVGL v8.3.10
- Upgrade to Linux BSP to 6.6.36-2.1.0

- **Target**

- i.MX RT700EVK
- i.MX91EVK 9x9
- i.MX93 FRDM
- i.MX: DRM and Wayland backend

- **Bug fix**

- LGLGUIB-2495: The simulator display of the RT1176 (720x1280) demo is out of screen

When the width or height of the simulator exceeds the monitor's size, part of the

simulator is out of the monitor.

### 3.2 Known issues

- **LGLGUIB-1613:** An error message in the log window appears after successfully running “Run Target” on macOS

An error message appears on the log window when “Run Target” is completed on macOS, even if the application is deployed successfully on the board.

## 4 V1.8.1 GA (Released on 30 September 2024)

- **UI development tool**
  - NXP SSO login
  - Widgets statistic for screen
  - Widgets statistic for project
  - Seamless simulator run in FreeMASTER
  - Retry mechanism of read FreeMASTER variable
  - Support the copy event target
  - Add the event trigger editor
  - Survey: allow input details for ‘other’ option
  - Highlight select image in the image window
  - Unify generated code style
  - EV charger demo
- **Library**
  - Video for i.MX RT1160/70
- **Toolchain**
  - MCUX IDE 11.10.0
  - ARMGCC 13.2.1
  - IAR 9.60.1
  - Keil MDK 5.39.0
- **Target**
  - i.MX91EVK 11×11

- Remove landscape mode of 1280×720 for i.MX RT1160/1170

## 4.2 Known issues

- **LGLGUIB-1613:** An error message in the log window appears after successfully running “Run Target” on macOS

An error message appears on the log window when “Run Target” is completed on macOS, even if the application is deployed successfully on the board.

- **LGLGUIB-2495:** The simulator display of the RT1176 (720×1280) demo is out of the screen

When running the simulator of the RT1176 demo with default display (720×1280), the simulator is out of the screen and cannot display all content. The workaround is to change the host display scale setting to 100%.

# 5 V1.8.0 GA (Released on 31 July 2024)

## 5.1 New features (Released on 31 July 2024)

- **UI development tool**

- Style manage, import, export
- HTML converter
- Optimized widgets window
- Widget lockdown
- Terminate build
- Visualized events setting
- Enhanced digital cluster
- Moved project setting to Project menu
- Improved code viewer/editor
- Improved Ctrl+A and mouse right click

- **Library**

- Removed v7
- LED: color changes by event

- **Toolchain**

- MCUX IDE11.10/SDK 2.16
- ARMGCC/IAR/Keil upgrade

– Zephyr 3.6

- **Target**

- FRDM-MCXN236
- FRDM-MCX: portrait mode

- **Document**

- More description of demos

- **Bug fix**

- **LGLGUIB-4383:** Exception after project upgrade

When a project based on a camera preview template is created and then upgraded with v1.7.2, the upgraded project is different. The camera part is removed and the project cannot run as expected.

- **LGLGUIB-4145:** The camera preview template does not work properly

A project is created based on the default configuration of the camera preview template for i.MX RT1170- EVK. Nothing is displayed on the screen when the application is running on the target board.

- **LGLGUIB-4404:** GUI Guider hangs when generating code after deleting the background image of a widget through the resource manager

When the background image of a widget is removed through the resource manger, the GUI Guider IDE hangs when generating code.

## 5.2 Known issues

- **LGLGUIB-1613:** An error message in the log window appears after successfully running “Run Target” on macOS

An error message appears on the log window when “Run Target” is completed on macOS, even if the application is deployed successfully on the board.

- **LGLGUIB-2495:** The simulator display of the RT1176 (720×1280) demo is out of the screen

When running the simulator of the RT1176 demo with default display (720×1280), the simulator is out of the screen and cannot display all content. The workaround is to change the host display scale setting to 100 %.



## 6 V1.7.2 GA (Released on 19 April 2024)

### 6.1 New features (Released on 19 April 2024)

- **Bug fix**

- When the FreeMASTER debug function is enabled, the FreeMASTER related source code cannot be generated correctly.
- When designing a complex application, the GUI editor does not get refreshed when adding new widgets.

### 6.2 Known issues

- **LGLGUIB-1613:** An error message in the log window appears after successfully running “Run Target” on macOS

An error message appears on the log window when “Run Target” is completed on macOS, even if the application is deployed successfully on the board.

- **LGLGUIB-2495:** The simulator display of the RT1176 (720×1280) demo is out of the screen

When running the simulator of the RT1176 demo with default display (720×1280), the simulator is out of the screen and cannot display all content. The workaround is to change the host display scale setting to 100 %.

## 7 V1.7.1 GA (Released on 29 March 2024)

### 7.1 New features (Released on 29 March 2024)

- **UI development tool**

- Video converter
- Display widget coordinate and size
- Support button text format
- Template download status prompt

- Display SDK and toolchain version
- Separate generate code, build, run simulator
- Multiple widgets selection in widget tree
- Menu of shortcut key
- Dither mode of gradient background color
- Support LVGL symbols
- Pass guider\_ui structure as userdata of event callback function
- Multi-language demo
- Digital cluster reference design
- **Performance**
  - Optimized performance for screen transition
- **Bug fix**
  - **LGLGUIB-2520:** The panel type is wrong when running the demo on the target  
With an RT1160-EVK with RK043FN02H panel, create an example of GUI Guider and select the RT1060- EVK board and RK043FN66HS panel. Then, execute “RUN” > Target “MCUXpresso”. The GUI can be shown on the display. When exporting the project and deploying it by MCUXpresso IDE, there is no GUI display on the panel.

## 7.2 Known issues

- **LGLGUIB-1613:** An error message in the log window appears after successfully running “Run Target” on macOS  
An error message appears on the log window when “Run Target” is completed on macOS, even if the application is deployed successfully on the board.
- **LGLGUIB-2495:** The simulator display of the RT1176 (720×1280) demo is out of the screen  
When running the simulator of the RT1176 demo with default display (720×1280), the simulator is out of the screen and cannot display all content. The workaround is to change the host display scale setting to 100 %.

# 8 V1.7.0 GA (Released on 31 January 2024)

## 8.1 New features (Released on 31 January 2024)

- **UI development tool**

- Double-click project file to open the GUI Guider
- Change display type in project settings
- Move keyboard setting to project settings
- New widgets demo
- Categorize demo and reference design
- Added view menu
- Prompt during “Run Target” if no device is connected
- Incremental build for simulator
- More attributes, style, event, and action
- More shortcut keys
- Optimized redundant code
- GUI Guider survey

- **FreeMASTER Integration**

- WYSIWYG debug GUI design
- Widgets and variables binding
- Variable reading and writing
- Remote debug in simulator

- **Library**

- LVGL v8.3.10
- Animation image/3D image: color format setting

- **Toolchain**

- MCUX IDE 11.9.0
- MCUX SDK 2.15.000
- ARMGCC 12.3.1
- IAR 9.50.1
- Keil MDK 5.38
- Zephyr 3.5
- RT-Thread 5.0.2
- Yocto SDK 6.1-mickledore.

- **Targets**

- LPC55S36

– MCX-N947-FRDMX + X-LCD-PAR-S035 panel

- **Bug fix**

– **LGLGUIB-3546:** Undo does not work properly when multiple elements are selected  
Undo does not work properly when multiple elements are selected and moved (only some of them return to the previous position when pressing undo). The workaround is to do undo for each element.

– **LGLGUIB-3549:** The GIF image stops animating

When using an Aimg widget to display a GIF image, the animation stops after one round image iteration on the target board when using an ARMGCC build. The workaround is to use MCUXpresso IDE, IAR, or Keil IDE.

– **LGLGUIB-3831:** The text in the label widget is not displayed correctly

The text in the label widget is not displayed correctly in the simulator and board LCD.

## 8.2 Known issues

- **LGLGUIB-1613:** An error message in the log window appears after successfully running “Run Target” on macOS

An error message appears on the log window when “Run Target” is completed on macOS, even if the application is deployed successfully on the board.

- **LGLGUIB-2495:** The simulator display of the RT1176 (720×1280) demo is out of the screen

When running the simulator of the RT1176 demo with default display (720×1280), the simulator is out of the screen and cannot display all content. The workaround is to change the host display scale setting to 100 %.

- **LGLGUIB-2520:** The panel type is wrong when running the demo on the target  
With an RT1160-EVK with RK043FN02H panel, create an example of GUI Guider and select the RT1060-EVK board and RK043FN66HS panel. Then, execute “RUN” > Target “MCUXpresso”. The GUI can be shown on the display. When exporting the project and deploying it by MCUXpresso IDE, there is no GUI display on the panel.

# 9 V1.6.1 GA (Released on 28 September 2023)

## 9.1 New features (Released on 28 September 2023)

- **UI development tool**

- New template layout in new project wizard
- Adding sub-menu for menu widget
- Double-click widget to edit text: button, label, and text area
- New release notification mechanism
- Supports changing editor shape
- More attributes and styles
- More animation setting parameters
- Sets background images of different states of the switch widget
- Adds indicator part for meter widget
- New widget demo: canvas
- New reference design: smart watch
- Updated default line style
- Selectable zoom options
- QNX support for i.MX93
- More shortcut keys
- Improved UX of number and text input
- Optimized structure of user guide

- **Performance**

- SRAM frame buffer for i.MX RT1040 EVK and i.MX RT1064 EVK
- Performance optimized templates

- **Widgets**

- Text area: one line and password mode
- Enhanced canvas: draw multiple widgets

- **Targets**

- i.MX RT1060 EVKC
- i.MX RT1170 EVKB: RPI Panel

- **Bug fix**

- **LGLGUIB-3545:** Simulators do not work properly for the smart appliance demo  
The smart appliance demo does not work in the Micro-Python simulator. The workaround is to use a C simulator.

## 9.2 Known issues

- **LGLGUIB-1613:** An error message in the log window appears after successfully running “Run Target” on macOS  
An error message appears on the log window when “Run Target” is completed on macOS, even if the application is deployed successfully on the board.
- **LGLGUIB-2495:** The simulator display of the RT1176 (720×1280) demo is out of the screen  
When running the simulator of the RT1176 demo with default display (720×1280), the simulator is out of the screen and cannot display all content. The workaround is to change the host display scale setting to 100 %.
- **LGLGUIB-2520:** The panel type is wrong when running the demo on the target  
With an RT1160-EVK with RK043FN02H panel, create an example of GUI Guider and select the RT1060-EVK board and RK043FN66HS panel. Then, execute “RUN” > Target “MCUXpresso”. The GUI can be shown on the display. When exporting the project and deploying it by MCUXpresso IDE, there is no GUI display on the panel.
- **LGLGUIB-3546:** Undo does not work properly when multiple elements are selected  
Undo does not work properly when multiple elements are selected and moved (only some of them return to the previous position when pressing undo). The workaround is to do undo for each element.
- **LGLGUIB-3549:** The GIF image stops animating  
When using Aimg widget to display a GIF image, the animation stops after one round image iteration on the target board when using an ARMGCC build. The workaround is to use MCUXpresso IDE, IAR, or Keil IDE.

## 10 V1.6.0 GA (Released on 31 July 2023)

### 10.1 New features (Released on 31 July 2023)

- **UI development tool**
  - Cloud templates
  - Predefined style
  - Allow same widget name in different screens
  - 1 bit and 8 bits color depth

- Enable and disable flags
- More attributes, styles, and events, for example, gesture
- Set background image for widgets
- New widget demo: Lottie, menu, carousel
- New reference designs: smart appliance, smart label
- Improved widget demo: SDcardStorage
- Selected screen as startup screen
- Code editor of custom source files
- Widget can be larger than screen
- Add custom code after setup\_screen
- Unified format of board name
- Remove Java dependency
- Online documents
- Version control for project upgrade
- **Library**
  - LVGL v8.3.5
  - Barcode widget
- **Benchmark optimization**
  - SRAM frame buffer support for MCX-N9-BRK and i.MX RT1050
  - Improved installation speed
  - Optimized speed of code generation
- **Toolchain**
  - MCUX IDE 11.8.0
  - MCUX SDK 2.14.0
  - ARMGCC 12.2
  - IAR 9.40.1
  - Keil MDK 5.38
- **Target**
  - MCX-N5xx-EVK
  - RW6102
  - KW45
  - i.MX93(A core)
- **Host**

– ARM64 Mac

- **Bug fix**

- **LGLGUIB-3334:** Cannot use same widget name in different screens

The same widget name cannot be used in different screen. For example, btn\_1 is used as name of a button in screen 1, btn\_1 should be used as name of button in screen 2.

- **LGLGUIB-3335:** When undoing screen copy, the source screen is overridden

When copying a screen, then undo the copy operation, the original screen is overridden.

- **LGLGUIB-3351:** Unable to change the name of tab titles

We are not able to change the tab titles. The tab title uses corresponding variable name which cannot include spaces and has some other constraints.

## 10.2 Known issues

- **LGLGUIB-1613:** An error message in the log window appears after successfully running “Run Target” on macOS

An error message appears on the log window when “Run Target” is completed on macOS, even if the application is deployed successfully on the board.

- **LGLGUIB-2495:** The simulator display of the RT1176 (720×1280) demo is out of the screen

When running the simulator of the RT1176 demo with default display (720×1280), the simulator is out of the screen and cannot display all content. The workaround is to change the host display scale setting to 100 %.

- **LGLGUIB-2520:** The panel type is wrong when running the demo on the target  
With an RT1160-EVK with RK043FN02H panel, create an example of GUI Guider and select the RT1060- EVK board and RK043FN66HS panel. Then, execute “RUN” > Target “MCUXpresso”. The GUI can be shown on display. When exporting the project and deploying it by MCUXpresso IDE, there is no GUI display on the panel.

- **LGLGUIB-3545:** Simulators do not work properly for the smart appliance demo  
Smart appliance demo does not work in MicroPython simulator. The workaround is to use C simulator.

- **LGLGUIB-3546:** Undo does not work properly when multiple elements are selected  
Undo does not work properly when multiple elements are selected and moved (only



some of them return to the previous position when pressing undo). The workaround is to do undo for each element.

- **LGLGUIB-3549:** The GIF image stops animating

When using Aimg widget to display a GIF image, the animation stops after one round images iteration on target board when using ARMGCC build. The workaround is to use MCUXpresso IDE, IAR, or Keil IDE.

## 11 V1.5.1 GA (Released on 31 March 2023)

### 11.1 New features (Released on 31 March 2023)

- **UI development tool**

- Multi-instance
- Event setting for image and textarea
- Enable runtime memory monitor
- Widget visibility setting
- Move widgets between screens
- Container inside tabview and tileview
- Custom options for lv\_conf.h
- Improved prompt of “Run Simulator” / “Run Target”
- Progress bar of “export project”
- Save custom color
- Add widgets by mouse click in expand mode
- Horizontal/vertical widgets distribution
- More shortcut functions in mouse right-click
- Support direct project deletion
- Flexible resource tree window
- New demos: air conditioner and progress bar
- Improved existent demos
- Supplement entry arrow for subitems

- **Benchmark optimization**

- i.MX RT595: defaults to SRAM frame buffer
- Reduce redundant code of GUI application
- **Toolchain**
  - MCUX IDE 11.7.1
  - MCUX SDK 2.13.1
- **Target**
  - i.MX RT1060 EVKB
  - i.MX RT595: SRAM frame buffer
  - i.MX RT1170: 24b color depth
  - Host OS
    - Ubuntu 22.04
- **Bug fix**
  - **LGLGUIB-2517:** The image position is not displayed correctly in the simulator  
Set the image to one position. It shows a little deviation in the simulator. The position is correct when running on the development board.

## 11.2 Known issues

- **LGLGUIB-1613:** An error message in the log window appears after successfully running “Run Target” on macOS  
An error message appears on the log window when “Run Target” is completed on macOS, even if the APP is deployed successfully on the board.
- **LGLGUIB-2495:** The simulator display of the RT1176 (720×1280) demo is out of the screen  
When running the simulator of the RT1176 demo with default display (720×1280), the simulator is out of the screen and cannot display all content. The workaround is to change the host display scale setting to 100 %.
- **LGLGUIB-2520:** The panel type is wrong when running the demo on the target  
With an RT1160-EVK with RK043FN02H panel, create an example of GUI Guider and select the RT1060- EVK board and RK043FN66HS panel. Then, execute “RUN” > Target “MCUXpresso”. The GUI can be shown on display. When exporting the project and deploying it by MCUXpresso IDE, there is no GUI display on the panel.

# 12 V1.5.0 GA (Released on 18 January 2023)

## 12.1 New features (Released on 18 January 2023)

- **UI development tool**

- Image converter and binary merger
- Resource manager: image, font, video, and lottie json
- Shortcut of bringing widget to top or bottom
- Display base template in project information window
- Store image binary in QSPI flash
- Single keyboard instance
- Prompt of project backup before upgrade
- Widget actions on-screen load
- Screen events setting
- Display GUI Guider version
- Memory size optimization for multi-pages application
- Display icon and line in resource tree
- Flexible widgets window
- Resize window by mouse dragging
- Comments in lv\_conf.h

- **Library**

- LVGL v8.3.2
- Video widget (selected platforms)
- Lottie widget (selected platforms)
- QR code
- Text progress bar

- **Toolchain**

- MCUX IDE 11.7.0
- MCUX SDK 2.13.0

- **Target**

- MCX-N947-BRK
- i.MX RT1170EVKB
- LPC5506
- i.MX RT1060: SRAM frame buffer

- **Bug fix**

- **LGLGUIB-2522:** Must reset the platform manually after running Target with Keil  
When creating an example (printer) of GUI Guider, which selects RT1060-EVK board and RK043FN02H panel, execute “RUN” > Target “Keil”. The log window shows “undefined”, so the board must be reset manually to run the example.

- **LGLGUIB-2720:** The behavior of Carousel widget in MicroPython simulator is incorrect

When adding an image button in the carousel and clicking the widget, the status of the image button is displayed abnormally.

## 12.2 Known issues

- **LGLGUIB-1613:** An error message in the log window appears after successfully running “Run Target” on macOS

An error message appears on the log window when “Run Target” is completed on macOS, even if the APP is deployed successfully on the board.

- **LGLGUIB-2495:** The simulator display of the RT1176 (720×1280) demo is out of the screen

When running the simulator of the RT1176 demo with default display (720×1280), the simulator is out of the screen and cannot display all content. The workaround is to change the host display scale setting to 100 %.

- **LGLGUIB-2517:** The image position is not displayed correctly in the simulator  
Set the image to one position. It shows a little deviation in the simulator. The position is correct when running on the development board.

- **LGLGUIB-2520:** The panel type is wrong when running the demo on the target  
With an RT1160-EVK with RK043FN02H panel, create an example of GUI Guider and select the RT1060- EVK board and RK043FN66HS panel. Then, execute “RUN” > Target “MCUXpresso”. The GUI can be shown on display. When exporting the project and deploying it by MCUXpresso IDE, there is no GUI display on the panel.

## 13 V1.4.1 GA (Released on 30 September 2022)

### 13.1 New features (Released on 30 September 2022)

- **UI development tool**

- Non-deformation screen preview
- Display size of imported image
- Description, type, and doc link in attribute window
- Move editor's position with mouse
- Pixel scale in editor window
- Demo of runtime image (SD) decode: i.MX RT1064, LPC54S018M
- Demo of video (SD) play: i.MX RT1050
- Improved name, default value, and prompt for attributes
- Submenu of license
- Prompt of code override
- Auto focus on new widget in editor
- Improved mouse-based image rotation feature
- Auto-detect for custom.c and custom.h
- Improved robustness and stability

- **Library**

- Data text box widget
- Calendar: highlight selected date

- **Target**

- NPI: i.MX RT1040

- **Toolchain**

- MCUXpresso IDE 11.6.1
- MCUXpresso SDK 2.12.1

- **RTOS**

- Zephyr

- **Bug fix**

- **LGLGUIB-2466:** [Widget: Slider] V7&V8: Slider outline opacity works abnormally in editor

When setting the outline opacity of slider widget to 0, the outline is still visible in editor.

## 13.2 Known issues

- **LGLGUIB-1613:** An error message in the log window appears after successfully

running “Run Target” on macOS

An error message appears on the log window when “Run Target” is completed on macOS, even if the APP is deployed successfully on the board.

- **LGLGUIB-2495:** The simulator display of the RT1176 (720×1280) demo is out of the screen

When running the simulator of the RT1176 demo with default display (720×1280), the simulator is out of the screen and cannot display all content. The workaround is to change the host display scale setting to 100 %.

- **LGLGUIB-2517:** The image position is not displayed correctly in the simulator  
Set the image to one position. It shows a little deviation in the simulator. The position is correct when running on the development board.
- **LGLGUIB-2520:** The panel type is wrong when running the demo on the target  
With an RT1160-EVK with RK043FN02H panel, create an example of GUI Guider and select the RT1060- EVK board and RK043FN66HS panel. Then, execute “RUN” > Target “MCUXpresso”. The GUI can be shown on display. When exporting the project and deploying it by MCUXpresso IDE, there is no GUI display on the panel.
- **LGLGUIB-2522:** Must reset the platform manually after running Target with Keil  
When creating an example (printer) of GUI Guider, which selects RT1060-EVK board and RK043FN02H panel, execute “RUN” > Target “Keil”. The log window shows “undefined”, so the board must be reset manually to run the example.
- **LGLGUIB-2720:** The behavior of Carousel widget in MicroPython simulator is incorrect  
When adding image button in carousel and clicking the widget, the status of image button is displayed abnormally.

## 14 V1.4.0 GA (Released on 29 July 2022)

### 14.1 New features (Released on 29 July 2022)

- **UI development tool**
  - Unified layout of attribute setting UI
  - Shadow settings

- Custom ratio of GUI resize
- More themes and system settings
- Zoom out < 100 %, mouse control
- Easily set default screen
- Horizontal align and align line
- Screen and image preview
- Batch image import
- Rotate image by mouse
- Defaults to new display
- Project restructure
- RT-Thread
- **Widgets**
  - LVGL v8.2.0
  - Public: menu, rotary switch(arc), radio button, Chinese input
  - Private: carousel, analog clock
- **Performance**
  - Optimized performance template of i.MX RT1170 and i.MX RT595
  - Size optimization by compiling used widgets and dependency
- **Target**
  - LPC54628: external flash storage

– i.MX RT1170: landscape mode

- RK055HDMIPI4MA0 display

- **Toolchain**

- MCUXpresso IDE 11.6
- MCUXpresso SDK 2.12
- IAR 9.30.1
- Keil MDK 5.37

- **Bug fixes**

- **LGLGUIB-1409**: Random framing error

Occasionally the top menus may be cut off after widgets adding and deleting operation in the UI editor.

Currently, no other detail regarding this issue is available. The only known solution if this issue occurs is to close and reopen the GUI Guider application.

– **LGLGUIB-1838:** Sometimes svg image is not imported correctly

Sometimes the svg image is not imported correctly in GUI Guider IDE.

– **LGLGUIB-1895:** [Shape:color] lvgl-v8: Color widget distorts when it has large size  
When using color

widget of LVGL v8, the widget distorts when the color widget size is large.

– **LGLGUIB-2066:** [imgbtn] Can select multiple images for a state

When selecting images for the different states of an image button (Released, Pressed, Checked Release, or Checked Pressed), it is possible to select multiple images in the selection dialog box. The selection box should only highlight the last selected image.

– **LGLGUIB-2107:** [GUI Editor] GUI Editor design area not the same as simulator or target results

When designing a screen with a chart, the GUI editor design may not match the results when viewing in the simulator or on a target.

– **LGLGUIB-2117:** GUI Guider simulator generates an unknown error, and the UI application could not respond to any event

When developing multi-screen applications with GUI Guider, the three screens can be switched by clicking a button. After several times of screen switching, the simulator or board excites abnormally and reports an unknown error, and the demo could not respond to any event.

– **LGLGUIB-2120:** Filter recolor does not work on the design screen

The filter recolor feature does not show correctly in the design windows. When an image is added with the original color of white, the filter changes the color to blue. The design window shows that all the images, including their background, switch to the new color. The expectation is that the background should not change.

– **LGLGUIB-2121:** Font size could not be larger than 100

The font size could not be larger than 100. In some GUI applications, larger font size is needed.

– **LGLGUIB-2434:** Calendar display misplaced

When using the tab view as the overall background, after adding the calendar in content2, it is not shown correctly, no matter how the calendar is resized. The same issue occurs in both the simulator and board.

– **LGLGUIB-2502:** Unable to change the BG color of the list item on the drop-down list widget

The background color for the list label in the drop-down list widget cannot be changed.



## 14.2 Known issues

- **LGLGUIB-1613:** An error message in log window appears after successfully running “Run Target” on macOS

An error message appears on the log window when “Run Target” is completed on macOS, even if the APP is deployed successfully on the board.

- **LGLGUIB-2495:** The simulator display of the RT1176 (720×1280) demo is out of the screen

When running the simulator of RT1176 demo with default display (720×1280), the simulator is out of the screen and cannot display all content. The workaround is to change the host display scale setting to 100 %.

- **LGLGUIB-2517:** The image position is not displayed correctly in the simulator  
Set the image to one position. It shows a little deviation in the simulator. The position is correct when running on the development board.

- **LGLGUIB-2520:** The panel type is wrong when running the demo on target  
With an RT1160-EVK  
with RK043FN02H panel, create an example of GUI Guider and select the RT1060-EVK board and RK043FN66HS panel. Then execute “RUN” > Target “MCUXpresso”.  
The GUI can be shown on display.

When exporting the project and deploying it by MCUXpresso IDE, there is no GUI display on the panel.

- **LGLGUIB-2522:** Must reset the platform manually after running Target with Keil  
When creating an example (printer) of GUI Guider which selects RT1060-EVK board and RK043FN02H panel, execute “RUN” > Target “Keil”. The log window shows “undefined” and therefore the board must be reset manually to run the example.

## 15 V1.3.1 GA (Released on 31 March 2022)

### 15.1 New features (Released on 31 March 2022)

- **UI development tool**
  - Wizard for creating project

- GUI auto scaling
- Selectable display with custom option
- 11 new fonts: including Arial, Abel, and more
- Defaults to Arial font in demos
- Memory monitor
- Camera preview APP on i.MX RT1170
- Group widgets move
- Container copy
- Incremental compile

### • **Widgets**

- Animated analog clock
- Animated digital clock

### • **Performance**

- Build time optimization
- Perf option: size, speed, and, balance
- Performance chapter in User Guide

### • **Target**

- i.MX RT1024
- LPC55S28, LPC55S16

### • **Toolchain**

- MCU SDK v2.11.1
- MCUX IDE v11.5.1

### • **Bug fixes**

- LGLGUIB-1557: The copy/paste function of container widget should apply for all its child widgets GUI Guider copy and paste operation were applicable only for the widget itself and was not included for the children. For example, when a container was created and a slider was added as a child, copying and pasting the container, resulted in a new container. However, the container was without a new slider. The copy/paste function of the container widget is now applied to all the child widgets.
- LGLGUIB-1616: Improve the UX of widget move up/down in resource window On the

Resource tab, a screen may contain many widgets. It was inefficient and inconvenient to move up a widget resource from the bottom to the top in widgets list of the screen. It was only possible after step-by-step mouse click. To provide a better experience, the drag-and-drop feature is now supported for it.

– LGLGUIB-1943: [IDE] The start position of line is incorrect in the editor

When setting the start position of line to (0, 0), the start position of the widget is incorrect in the editor.

However, the position is normal in simulator and target.

– LGLGUIB-1955: No previous screen button on the second screen of screen transition demo

For the screen transition demo, the text of button in the second screen should be “previous screen” instead of “next screen”.

– LGLGUIB-1962: Memory leak in auto-generated code

There is memory leak in the code generated by GUI Guider. The code creates a screen with `lv_obj_create()` but calls `lv_obj_clean()` to delete it. `Lv_obj_clean` deletes all the children of an object but not the object causing the leak.

– LGLGUIB-1973: Code of events and actions of the second screen is not generated

When a project is created including two screens with one button on each, and the event and action are set to navigate between these two screens by the button event; the code of “Load Screen” event of second screen’s button is not generated.

## 15.2 Known issues

- LGLGUIB-1409: Random framing error

Occasionally the top menus may be cut off after widgets adding and deleting operation in the UI editor.

Currently, no other detail regarding this issue is available. The only known solution if this issue occurs is to close and reopen the GUI Guider application.

- LGLGUIB-1613: An error message in log window appears after successfully running “Run Target” on macOS

An error message appears on the log window when “Run Target” is completed on macOS, even if the APP is deployed successfully on the board.

- LGLGUIB-1838: Sometimes svg image is not imported correctly

Sometimes the svg image is not imported correctly in GUI Guider IDE.

- LGLGUIB-1895: [Shape:color] lvgl-v8: Color widget distorts when it has large size

When using color widget of LVGL v8, the widget distorts when the color widget size is large.

## 16 V1.3.0 GA (Released on 24 January 2022)

### 16.1 New features

- UI development tool
  - Two LVGL version
  - 24-bit color depth
  - Music player demo
  - Multi-themes
  - Enable/disable FPS/CPU monitor
  - Screen attributes setting

#### • Widgets

- LVGL 8.0.2
- MicroPython
- 3D animation for JPG/JPEG
- Drag and drop design for tileview

#### • Toolchain

- New: Keil MDK v5.36
- Upgrade: MCU SDK v2.11.0, MCUX IDE v11.5.0, IAR v9.20.2

#### • Supported OS

- macOS 11.6

#### • Bug fixes

- LGLGUIB-1520: Blank screen appears when Gauge is added in tabview and needle value is changed

A blank screen appears in the IDE on clicking the editor after adding the gauge widget as a child of the tabview object and setting the needle value. The workaround is to

restart GUI Guider.

– LGLGUIB-1774: Issue adding calendar widget to project

Adding a calendar widget to a project causes an unknown error. Apparently the name of the widget is not properly updated. GUI Guider attempts to process a widget name `screen_calendar_1` but the calendar is on `scrn2`. It should be `scrn2_calendar_1`.

– LGLGUIB-1775: Typo in the system information

In the “System” setting of GUI Guider IDE, there is typo in “USE PERE MONITOR”, it should be “REAL TIME PERF MONITOR”.

– LGLGUIB-1779: Build error when project path contains space character

When there is space character in the project path, the project build fails in GUI Guider.

– LGLGUIB-1789: [MicroPython simulator] Blanks space added in the roller widget

The roller widget simulated with MicroPython adds a blank space between the first and last list item.

– LGLGUIB-1790: ScreenTransition template fails in 24 bpp building in IDE

To create a project in GUI Guider, select `lvgl7`, `RT1064 EVK` board template, `ScreenTransition` app template, 24-bit color depth and `480*272`. Generate the code and then export the code to IAR or MCUXpresso IDE. Copy the generated code to SDK `lvgl_guider` project and build in IDE. An incorrect screen appears and the code gets stuck in `MemManage_Handler`.

## 16.2 Known issues

- LGLGUIB-1409: Random framing error

Occasionally the top menus may be cut off after widgets adding and deleting operation in the UI editor.

Currently, no other detail regarding this issue is available. The only known solution if this issue occurs is to close and reopen the GUI Guider application.

- LGLGUIB-1613: An error message in log window appears after successfully running “Run Target” on macOSAn error message appears on the log window when “Run Target” is completed on macOS, even if the APP is deployed successfully on the board.

# 17 V1.2.1 GA (Released on 29 September 2021)

## 17.1 New features

- UI development tool
  - LVGL built-in themes
- Toolchain
  - MCU SDK 2.10.1
- New Target / Device Support
  - i.MX RT1015
  - i.MX RT1020
  - i.MX RT1160
  - i.MX RT595: TFT Touch 5" display

- Bug fixes
  - LGLGUIB-1404: Export files to specified folder

When using the code export function, GUI Guider forces the exported files in a default folder instead of the folder specified by users.

- LGLGUIB-1405: Run Target does not reset and run the application

When IAR is selected from the “Run Target” feature, the board does not reset automatically after image programming. The user must manually reset the EVK using the reset button once the programming has completed.

- LGLGUIB-1407: [Tileview] Child widgets are not updated in real time

When a new tile is added in tileview widget, the widgets tree in the left panel of GUI Guider is not refreshed if no child widget is added in the new tile. A child widget must be added to the tile for it to appear in the leftmost panel.

- LGLGUIB-1411: ButtonCounterDemo application performance issue

When buttonCounterDemo is built for LPC54S018 by using IAR v9.10.2, the poor application performance may be experienced. When pressing one button and then the other, there is a noticeable delay of ~500 ms before the screen updates.

- LGLGUIB-1412: Building demo applications may fail

If the Export code feature is used to export code of GUI APP without running “Generate

Code” first, the build fails after importing the exported code in MCUXpresso IDE or IAR.

– LGLGUIB-1450: Error in GUI Guider uninstaller

If there are multiple installations of GUI Guider on a machine, the uninstaller fails to distinguish between those installations. For example, running the uninstaller of v1.1.0 may result in the removal of v1.2.0.

– LGLGUIB-1506: The state of previously pressed image button is not refreshed after pressing another image button

When one button is pressed, and another one is also pressed, the state of the last pressed button does not change. The resulting effect is that multiple image buttons are in the pressed state simultaneously.

## 17.2 Known issues

- LGLGUIB-1409: Random framing error

Occasionally the top menus may be cut off after widgets adding and deleting operation in the UI editor.

Currently, no other details are available regarding this issue. The only known solution if this issue occurs is to close and reopen the GUI Guider application.

- LGLGUIB-1520: Blank screen appears when Gauge is added in tabview and needle value is changed

A blank screen appears in the IDE on clicking the editor after adding the gauge widget as a child of the tabview object and setting the needle value. The workaround is to restart GUI Guider.

# 18 V1.2.0 GA (Released on 30 July 2021)

## 18.1 New features

- UI development tool
  - Widget search
  - Custom font size
  - UG for board support without template

- Widgets

- LVGL 7.10.1
- Events for buttons of list
- Memory leak check
- Toolchain
  - IAR 9.10.2
  - MCUX IDE 11.4.0
  - MCUX SDK 2.10.x
- Acceleration
  - Image converter for VGLite performance augment
- New target / device support
  - LPC54s018m, LPC55S69
  - i.MX RT1010
- Bug fixes
  - LGLGUIB-1273: Simulator cannot display full screen when screen size is greater than host resolution
 

When the target screen resolution is greater than the PC screen resolution, the entire simulator screen cannot be viewed. In addition, the control bar is not visible so it is impossible to move the simulator screen.
  - LGLGUIB-1277: The simulator is blank for i.MX RT1170 and RT595 project when large resolution is selected
 

When the large resolution, for example 720×1280, is used to create project for i.MX RT1170 and i.MX RT595, the simulator is blank when GUI APP is running in simulator. The reason is that only partial screen is displayed when device screen size is larger than the PC screen resolution.
  - LGLGUIB-1294: printer demo: Click does not work when icon image is clicked
 

When the printer demo is running, there is no response when the icon image is clicked. This happens because the event trigger and action are not configured for the icon image.
  - LGLGUIB-1296: Size of text style is not to be exported in the list widget



After setting the text size of the list widget in the attributes window of GUI Guider, the configured text size does not take effect when the GUI APP is running.

## 18.2 Known issues

- LGLGUIB-1405: Run Target does not reset and run the application  
When IAR is selected from the “Run Target” feature, the board is not reset automatically after image programming. The user must manually reset the EVK using the reset button once the programming has completed.
- LGLGUIB-1407: [Tileview] Child widgets are not updated in real time  
When a new tile is added in tileview widget, the widgets tree in the left panel of GUI Guider is not refreshed if no child widget is added in the new tile. A child widget must be added to the tile for it to appear in the left-most panel.
- LGLGUIB-1409: Random framing error  
Occasionally the top menus may be cut off after widgets adding and deleting operation in the UI editor. No other details regarding this issue are available at this time. The only known solution if this issue occurs is to close and reopen the GUI Guider application.
- LGLGUIB-1411: ButtonCounterDemo application performance issue  
When buttonCounterDemo is built for LPC54S018 by using IAR v9.10.2, the poor application performance may be experienced. When pressing one button and then the other, there is a noticeable delay of ~500 ms before the screen updates.
- LGLGUIB-1412: Building demo applications may fail  
If the Export code feature is used to export code of GUI APP without running “Generate Code” first, the build will fail after importing the exported code in MCUXpresso IDE or IAR.
- LGLGUIB-1506: The state of previously pressed image button is not refreshed after pressing another image button

When one button is pressed, and another one is also pressed, the state of the last pressed button does not change. The resulting effect is that multiple image buttons are in the pressed state simultaneously. The workaround is to enable Checked state for image button through GUI Guider IDE.

# 19 V1.1.0 GA (Released on 17 May 2021)

## 19.1 New features

- UI development tool
  - Menu shortcut and keyboard control
  - New states: FOCUSED, EDITED, DISABLED
  - Frame rate customization
  - Screen transition configuration
  - Parent / children widgets
  - Callback function setting for animation image
  - VGLite enablement on IDE
  - Header path auto-config

### • Widgets

- BMP and SVG assets
- 3D animation for PNG
- Support tileview as standard widget

### • Acceleration

- Initial VGLite for RT1170 and RT595

### • New target / device support

- i.MX RT1170 and i.MX RT595

### • Bug fixes

- LGLGUIB-675: Animation refresh may not work well in simulator sometimes

The images of animation are not refreshed correctly in simulator sometimes, the root cause is that animation image widget does not handle image source changing properly.

- LGLGUIB-810: Animation image widget may have distorted hues

During the operation of an animation widget, the animated image may have a discolored hue in the background. The issue is caused due to the unhandled style properties.

- LGLGUIB-843: Erratic mouse operation when moving widgets when UI editor is zoomed in

When the UI editor is zoomed in, there may be erratic mouse operation when moving

widgets in the editor.

– LGLGUIB-1011: The screen overlay effect is incorrect when screens of different sizes are switched

When a second screen with opacity value 100 is created to cover the current screen (which is not deleted), the background screen effect is not displayed correctly.

– LGLGUIB-1077: Cannot display Chinese in Roller widget

When Chinese characters are used as row text in roller widget, the Chinese are not displayed when the APP is running.

## **19.2 Known issues**

- LGLGUIB-1273: Simulator cannot display full screen when screen size is greater than host resolution

When the target screen resolution is greater than the PC screen resolution, the entire simulator screen cannot be viewed. In addition, the control bar is not visible so it is impossible to move the simulator screen.

- LGLGUIB-1277: The simulator is blank for i.MX RT1170 and RT595 project when large resolution is selected GUI\_GUIDER\_RN\_1.9.1 When the large resolution, for example 720×1280, is used to create project for i.MX RT1170 and i.MX RT595, the simulator is blank when GUI APP is running in simulator. The reason is that only partial screen is displayed when device screen size is larger than the PC screen resolution.

- LGLGUIB-1294: printer demo: Click does not work when icon image is clicked  
When the printer demo is running, there is no response when the icon image is clicked. This happens because the event trigger and action are not configured for the icon image.

- LGLGUIB-1296: Size of text style is not to be exported in the list widget  
After setting the text size of the list widget in the attributes window of GUI Guider, the configured text size does not take effect when the GUI APP is running.

## **20 V1.0.0 GA (Released on 15 January 2021)**

## 20.1 New features

### • UI development tool

- Supports Windows 10 and Ubuntu 20.04
- Multi-language (English, Chinese) for IDE
- Compatible with LVGL v7.4.0, MCUXpresso IDE 11.3.0, and MCU SDK 2.9
- Project management: create, import, edit, delete
- What You See Is What You Get (WYSIWYG) UI design by drag and drop
- Multi-page application design
- Shortcut of bring forward and backward, copy, paste, delete, undo, redo
- Code viewer for UI definition JSON file
- Navigation bar to view the selected source file
- LVGL C code auto-generation
- Widget attributes group and setting
- Screen copy function
- GUI editor zoom in and zoom out
- Multiple fonts support and 3rd party fonts import
- Customizable Chinese character scope
- Widgets alignment: left, center, and right
- PXP acceleration enable and disable
- Support default style and custom style
- Integrated demo applications
- Compatible with MCUXpresso project
- Real-time log display

### • Widgets

- Supports 33 widgets
- Button (5): button, image button, checkbox, button group, switch
- Form (4): label, drop-down list, text area, calendar
- Table (8): table, tab, message box, container, chart, canvas, list, window
- Shape (9): arc, line, roller, led, spin box, gauge, line meter, color, spinner
- Image (2): image, animation image
- Progress (2): bar, slider
- Others (3): page, tile view, keyboard

- Animation: animation image, GIF to animation, animation easing, and path
- Support event trigger and action selection, custom action code
- Chinese display
- Support default style and custom style

- **New target / device support**

- NXP i.MX RT1050, i.MX RT1062, and i.MX RT1064
- NXP LPC54S018 and LPC54628
- Device template, auto-build, and auto-deploy for supported platforms
- Run simulator on X86 host

## 20.2 Known issues

- LGLGUIB-675: Animation refresh may not work well in simulator sometimes  
The images of animation are not refreshed correctly in simulator sometimes, the root cause is that animation image widget does not handle image source changing properly.
- LGLGUIB-810: Animation image widget may have distorted hues  
During the operation of an animation widget, the animated image may have a discolored hue in the background. The issue is caused due to the unhandled style properties.
- LGLGUIB-843: Erratic mouse operation when moving widgets when UI editor is zoomed in  
When the UI editor is zoomed in, there may be erratic mouse operation when moving widgets in the editor.
- LGLGUIB-1011: The screen overlay effect is incorrect when screens of different sizes are switched  
When a second screen with opacity value 100 is created to cover the current screen (which is not deleted), the background screen effect is not displayed correctly.
- LGLGUIB-1077: Cannot display Chinese in Roller widget  
When Chinese characters are used as row text in roller widget, the Chinese are not displayed when the APP is running.

# 21 Revision history

Table 1 summarizes the revisions to this document.

Table 1. Revision history

Document ID	Release date	Description
GUI_GUIDER_RN_1.9.1 v.20.0	30 April 2025	Added <a href="#">Section 2 "V1.9.1 GA (Released on 30 April 2025)"</a>
GUI_GUIDER_RN_1.9.0 v.19.0	22 January 2025	Updated for v1.9.0
GUI_GUIDER_RN_1.8.1 v.18.0	30 September 2024	Updated for v1.8.1
GUI_GUIDER_RN_1.8.0 v.17.0	31 July 2024	Updated for v1.8.0
GUI_GUIDER_RN_1.7.2 v.16.0	19 April 2024	Updated for v1.7.2
GUI_GUIDER_RN_1.7.1 v.15.0	29 March 2024	Updated for v1.7.1
GUI_GUIDER_RN_1.7.0 v.14.0	31 January 2024	Updated for v1.7.0
GUI_GUIDER_RN Rev. 1.0.0	15 January 2021	Initial release

## Legal information

### Definitions

Draft — A draft status on a document indicates that the content is still under internal review and subject to formal approval, which may result in modifications or additions. NXP Semiconductors does not give any representations or warranties as to the accuracy or completeness of information included in a draft version of a document and shall have no liability for the consequences of use of such information.

### Disclaimers

Limited warranty and liability — Information in this document is believed to be accurate and reliable. However, NXP Semiconductors does not give any representations or warranties, expressed or implied, as to the accuracy or completeness of such information and shall have no liability for the consequences of use of such information. NXP Semiconductors takes no responsibility for the content in this document if provided by an information source outside of NXP Semiconductors.

In no event shall NXP Semiconductors be liable for any indirect, incidental, punitive, special or consequential damages (including – without limitation – lost profits, lost savings, business interruption, costs related to the removal or replacement of any products or rework charges) whether or not such damages are based on tort (including negligence), warranty, breach of contract or any other legal theory.

Notwithstanding any damages that customer might incur for any reason whatsoever, NXP Semiconductors' aggregate and cumulative liability towards customer for the products described herein shall be limited in accordance with the Terms and conditions of commercial sale of NXP Semiconductors.

Right to make changes — NXP Semiconductors reserves the right to make changes to information published in this document, including without limitation specifications and product descriptions, at any time and without notice. This document supersedes and replaces all information supplied prior to the publication hereof.

Suitability for use — NXP Semiconductors products are not designed, authorized or warranted to be suitable for use in life support, life-critical or safety-critical systems or equipment, nor in applications where failure or malfunction of an NXP Semiconductors product can reasonably be expected to result in personal injury, death or severe property or environmental damage. NXP Semiconductors and its suppliers accept no liability for inclusion and/or use of NXP Semiconductors products in such equipment or applications and therefore such inclusion and/or use is at the customer's own risk.

**Applications** — Applications that are described herein for any of these products are for illustrative purposes only. NXP Semiconductors makes no representation or warranty that such applications will be suitable for the specified use without further testing or modification.

Customers are responsible for the design and operation of their applications and products using NXP Semiconductors products, and NXP Semiconductors accepts no liability for any assistance with applications or customer product design. It is customer's sole responsibility to determine whether the NXP Semiconductors product is suitable and fit for the customer's applications and products planned, as well as for the planned application and use of customer's third party customer(s). Customers should provide

appropriate design and operating safeguards to minimize the risks associated with their applications and products.

NXP Semiconductors does not accept any liability related to any default, damage, costs or problem which is based on any weakness or default in the customer's applications or products, or the application or use by customer's third party customer(s). Customer is responsible for doing all necessary testing for the customer's applications and products using NXP Semiconductors products in order to avoid a default of the applications and the products or of the application or use by customer's third party customer(s). NXP does not accept any liability in this respect.

**Terms and conditions of commercial sale** — NXP Semiconductors products are sold subject to the general terms and conditions of commercial sale, as published at <https://www.nxp.com/profile/terms>, unless otherwise agreed in a valid written individual agreement. In case an individual agreement is concluded only the terms and conditions of the respective agreement shall apply. NXP Semiconductors hereby expressly objects to applying the customer's general terms and conditions with regard to the purchase of NXP Semiconductors products by customer.

**Export control** — This document as well as the item(s) described herein may be subject to export control regulations. Export might require a prior authorization from competent authorities.

**Suitability for use in non-automotive qualified products** — Unless this document expressly states that this specific NXP Semiconductors product is automotive qualified, the product is not suitable for automotive use. It is neither qualified nor tested in accordance with automotive testing or application requirements. NXP Semiconductors accepts no liability for inclusion and/or use of non-automotive qualified products in automotive equipment or applications.

In the event that customer uses the product for design-in and use in automotive applications to automotive specifications and standards, customer (a) shall use the product without NXP Semiconductors' warranty of the product for such automotive applications, use and specifications, and (b) whenever customer uses the product for



automotive applications beyond NXP Semiconductors' specifications such use shall be solely at customer's own risk, and (c) customer fully indemnifies NXP Semiconductors for any liability, damages or failed product claims resulting from customer design and use of the product for automotive applications beyond NXP Semiconductors' standard warranty and NXP Semiconductors' product specifications.

**HTML publications** — An HTML version, if available, of this document is provided as a courtesy. Definitive information is contained in the applicable document in PDF format. If there is a discrepancy between the HTML document and the PDF document, the PDF document has priority.

**Translations** — A non-English (translated) version of a document, including the legal information in that document, is for reference only. The English version shall prevail in case of any discrepancy between the translated and English versions.

**Security** — Customer understands that all NXP products may be subject to unidentified vulnerabilities or may support established security standards or specifications with known limitations. Customer is responsible for the design and operation of its applications and products throughout their lifecycles to reduce the effect of these vulnerabilities on customer's applications and products. Customer's responsibility also extends to other open and/or proprietary technologies supported by NXP products for use in customer's applications. NXP accepts no liability for any vulnerability. Customer should regularly check security updates from NXP and follow up appropriately.

Customer shall select products with security features that best meet rules, regulations, and standards of the intended application and make the ultimate design decisions regarding its products and is solely responsible for compliance with all legal, regulatory, and security related requirements concerning its products, regardless of any information or support that may be provided by NXP.

NXP has a Product Security Incident Response Team (PSIRT) (reachable at [PSIRT@nxp.com](mailto:PSIRT@nxp.com)) that manages the investigation, reporting, and solution release to security vulnerabilities of NXP products.

**NXP B.V.** — NXP B.V. is not an operating company and it does not distribute or sell

products.

## **Trademarks**

Notice: All referenced brands, product names, service names, and trademarks are the property of their respective owners.

NXP — wordmark and logo are trademarks of NXP B.V.

AMBA, Arm, Arm7, Arm7TDMI, Arm9, Arm11, Artisan, big.LITTLE, Cordio, CoreLink, CoreSight, Cortex, DesignStart, DynamiQ, Jazelle, Keil, Mali, Mbed, Mbed Enabled, NEON, POP, RealView, SecurCore, Socrates, Thumb, TrustZone, ULINK, ULINK2, ULINK-ME, ULINKPLUS, ULINKpro,  $\mu$ Vision, Versatile — are trademarks and/or registered trademarks of Arm Limited (or its subsidiaries or affiliates) in the US and/or elsewhere. The related technology may be protected by any or all of patents, copyrights, designs and trade secrets. All rights reserved.

**© 2025 NXP B.V.**

For more information, please visit: <https://www.nxp.com>

**All rights reserved.**


Document feedback

Date of release: 30 April 2025

Document identifier: GUI\_GUIDER\_RN\_1.9.1

**Read More About This Manual & Download PDF:**

## **Documents / Resources**

	<p><a href="#">NXP V1.9.1 GUI Guider [pdf]</a> User Manual</p> <p>V1.9.1, V1.9.0, V1.8.1, V1.8.0, V1.9.1 GUI Guider, V1.9.1, GUI Guider, Guider</p>
---	---

## References

- [User Manual](#)

GUI Guider, Guider, NXP, v1.8.0, V1.8.1, V1.9.0, V1.9.1, V1.9.1 GUI

NXP Guider

## Leave a comment

Your email address will not be published. Required fields are marked \*

Comment \*

Name

Email

Website

☐ Save my name, email, and website in this browser for the next time I comment.

**Post Comment**

## Search:

e.g. whirlpool wrf535swhz

**Search**

[Manuals+](#) | [Upload](#) | [Deep Search](#) | [Privacy Policy](#) | [@manuals.plus](#) | [YouTube](#)

This website is an independent publication and is neither affiliated with nor endorsed by any of the trademark owners. The "Bluetooth®" word mark and logos are registered trademarks owned by Bluetooth SIG, Inc. The "Wi-Fi®" word mark and logos are registered trademarks owned by the Wi-Fi Alliance. Any use of these marks on this website does not imply any affiliation with or endorsement.