



nVent T-Series Horizontal Transition Splice Kit Instruction Manual

[Home](#) » [nVent](#) » nVent T-Series Horizontal Transition Splice Kit Instruction Manual 



**T-SERIES HORIZONTAL TRANSITION SPLICE KIT,
TOP FILL, 57 MM, 36 MM,
#18, #11, 55M, 35M, 254 MM**

Contents

- [1 T-Series Horizontal Transition Splice Kit](#)
- [2 FEATURES](#)
- [3 PRODUKTMERKMALE](#)
- [4 ADDITIONAL PRODUCT DETAILS](#)
- [5 DIAGRAMS](#)
- [6 Documents / Resources](#)
 - [6.1 References](#)

T-Series Horizontal Transition Splice Kit

CATALOG NUMBER

RBT1118101H



T-Series splice kits contain the following: Sleeve, filler material kit (filler material, packing, pouring basin ceramic insert and disk, pouring basin ceramic guide tube), pouring basin and pouring basin crucible. Splice kits are ordered based on the quantity of splices needed. Sleeves and filler material kits are one-time use parts. Pouring basins and crucibles are prorated based on their anticipated life. Ordering splice kits simplifies ordering, reduces order errors and helps ensure proper sizing of components. Kits can be ordered with longer (extended) sleeves for use when the reinforcing steel deformation pattern or spacing does not meet the minimum product specifications.

FEATURES

- Simplifies ordering
- Used to splice different diameter bars
- Available with extended sleeve lengths

PRODUKTMERKMALE

- Sleeve: Standard Length
- Rebar Size, Metric: 57 mm;36 mm
- Rebar Size, US: #18;#11
- Rebar Size, Canada: 55M;35M
- Length 1: 260 mm
- Length 2: 254 mm
- Length 3: 171 mm
- Height 1: 552 mm
- Height 2: 108 mm
- Diameter: 178 mm

ADDITIONAL PRODUCT DETAILS

Prior to installation, please read and understand all of the detailed instructions and safety notices provided in the nVent LENTON Cadweld Rebar Splicing System instruction manual.

All dimensions are for reference only.

Components can also be purchased separately: (1) Sleeve, (2) Filler Material Kit (filler material, packing, pouring

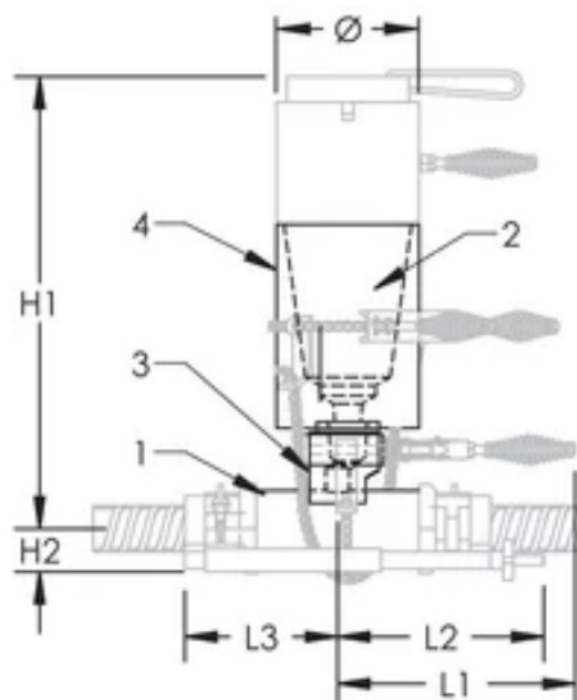
basin ceramic insert and disk, pouring basin ceramic guide tube), (3) Pouring Basin, and (4) Pouring Basin Crucible.

Splice Kit Components							
V er bi nd un gs ga rni tu r	Filler Material	Packing (2 Required)	Pouring Basin Cera mic Insert and Disk	Pouring Basin Ce ramic Guide Tube	S le e v e	Pouring Basin	Pouring Ba sin Crucible
R B T6 71 01 1 H	RBF80	RBS35477 RBS35478	RBS5037	RBS5038	R B T 7 1 0 1 1 H A	RBWS1467 A	RBWS2277 4
R B T6 71 01 H	RBF55	RBS35478	RBS5037	RBS5038	R B T 7 1 0 1 H A	RBWS1467 A	RBWS2277 4
R B T7 81 01 H	RBF70	RBS354710	RBS5037	RBS5038	R B T 8 1 0 1 H A	RBWS1467 C	RBWS2277 4
R B T7 91 01 H	RBF90	RBS354712 RBS35479	RBS5037	RBS5038	R B T 9 1 0 1 H A	RBWS1467 D	RBWS2277 5

R B T8 91 01 H	RBF90	RBS354711	RBS5037	RBS5038	R B T 9 1 0 1 H A	RBWS1467 D	RBWS2277 5
R B T8 10 10 1 H	RBF105	RBS354712	RBS5037	RBS5038	R B T 1 0 9 1 H A	RBWS1467 E	RBWS2277 5
R B T1 01 11 01 H	RBF125	RBS354712	RBS5037	RBS5038	R B T 1 1 1 0 1 H A	RBWS1467 F	RBWS2277 6
R B T1 11 41 01 H	RBF125	RBS354715	RBS5037	RBS5039	R B T 1 1 1 4 1 0 1 H A	RBWS1467 G	RBWS2277 6
R B T1 11 81 01 H	RBF240	RBS354712	RBS5037	RBS5039	R B T 1 4 1 8 1 0 1 H A	RBWS1467 K	RBWS2277 7

R B T1 41 81 01 H	RBF195	RBS354720	RBS5037	RBS5039	R B T 1 4 1 8 1 0 1 H A	RBWS1467 K	RBWS2277 6
-------------------------------------	--------	-----------	---------	---------	--	---------------	---------------

DIAGRAMS



WARNING

nVent products measure in accordance with nVent product information sheets and training materials installed and used. Information sheets are available at www.nVent.com and from your nVent representative. Customer Service Representative. Improper installation, misuse, misapplication or other actions inconsistent with nVent's instructions and warnings may result in malfunction, equipment damage, serious personal injury, or Death and/or result in the cancellation of the guarantee.

Nordamerika +1.800.753.9221 Option 1 – Customer Care Option 2 – Technical Support	Europa Netherlands: +31 800-0200135 France: +33 800 901 793
Europa Germany: 800 1890272 Other Countries: +31 13 5835404	APAC Shanghai: + 86 21 2412 1618/ Sydney: +61 2 9751 8500

nVent.com


Our powerful portfolio of brands:

CADDY
ERICO
HOFFMAN
RAYCHEM
SCHROFF
TRACER


© 2023 nVent. All nVent marks and logos are owned or licensed by nVent Services GmbH or its affiliates. All other trademarks are the property of their respective owners.
nVent reserves the right to change specifications without notice.



Documents / Resources

	<p>nVent T-Series Horizontal Transition Splice Kit [pdf] Instruction Manual T-Series Horizontal Transition Splice Kit, T-Series, Horizontal Transition Splice Kit, Transition Splice Kit, Splice Kit, Kit</p>
---	--

References

-  [Building a more Sustainable and Electrified World | nVent](#)
-  [Building a more Sustainable and Electrified World | nVent](#)
- [User Manual](#)