



# nVent RBWS2223M Angular Pouring Basin Instructions

[Home](#) » [nVent](#) » nVent RBWS2223M Angular Pouring Basin Instructions 

## Contents

- [1 nVent RBWS2223M Angular Pouring Basin](#)
- [2 Features](#)
- [3 Additional Product Details](#)
- [4 Warnings](#)
- [5 Product Usage Instructions](#)
- [6 Installation](#)
- [7 FEATURES](#)
- [8 SPECIFICATIONS](#)
- [9 ADDITIONAL PRODUCT DETAILS](#)
- [10 DIAGRAMS](#)
- [11 FAQ](#)
- [12 Documents / Resources](#)
  - [12.1 References](#)
- [13 Related Posts](#)



## nVent RBWS2223M Angular Pouring Basin



## Features

- Made from heat-resistant graphite
- Durable, reusable, and long-lasting
- Designed for use with T-Series and B-Series horizontal top fill sleeves

## **Additional Product Details**

RBWS2223 pouring basins require one RBW167 pouring basin frame (sold separately). Before installation, please read and understand all of the detailed instructions and safety notices provided in the nVent LENTON Cadweld Rebar Splicing System Instruction Manual. Sizes not shown may be available by special order. Contact your nVent LENTON representative for more information.

## **Warnings**

nVent products shall be installed and used only as indicated in nVent's product instruction sheets and training materials.

Instruction sheets are available at [www.nvent.com](http://www.nvent.com) and from your nVent customer service representative.

Improper installation, misuse, misapplication, or other failure to completely follow nVent's instructions and warnings may cause product malfunction, property damage, serious bodily injury and death, and/or void your warranty.

## **Product Usage Instructions**

### **Installation**

1. Ensure that the structure allows for the use of top fill pouring basins on angular installations.
2. Choose the appropriate RBWS2223 pouring basin based on the desired specifications (length, width, height, and angle).
3. If required, purchase the RBW167 pouring basin frames separately.
4. Before installation, thoroughly read and understand the nVent LENTON Cadweld Rebar Splicing System Instruction Manual for detailed instructions and safety notices.
5. Follow the installation instructions provided in the nVent LENTON Cadweld Rebar Splicing System Instruction Manual.

### **ANGULAR POURING BASIN, TOP FILL, 30°**

Top fill pouring basins should be used on angular installations whenever the clearances of the structure allow. The compact size of the top fill pouring basins help ensure the best possible flow of filler material.

## **FEATURES**

- Made from heat-resistant graphite
- Durable, reusable and long-lasting
- Designed for use with T-Series and B-Series horizontal top-fill sleeves

## **SPECIFICATIONS**

**Material:** Graphite

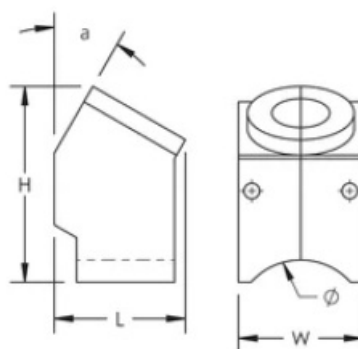
Table 1/1

Catalog Number	Diameter (Ø)	Length (L)	Width (W)	Height (H)	Angle (a)
RBWS2223E	2.25"	3.69"	3.5"	5.5"	30 °
RBWS2223F	2.5"	3.69"	3.5"	5.5"	30 °
RBWS2223M	3.75"	3.69"	3.5"	5.5"	30 °

## ADDITIONAL PRODUCT DETAILS

- RBWS2223 pouring basins require one RBW167 pouring basin frame (sold separately).
- Prior to installation, please read and understand all of the detailed instructions and safety notices provided in the nVent LENTON
- Cadweld Rebar Splicing System Instruction Manual.
- Sizes not shown may be available by special order. Contact your nVent LENTON representative for more information

## DIAGRAMS



## WARNING

nVent products shall be installed and used only as indicated in nVent's product instruction sheets and training materials. Instruction sheets are available at [www.nvent.com](http://www.nvent.com) and from your nVent customer service representative. Improper installation, misuse, misapplication, or other failure to completely follow nVent's instructions and warnings may cause product malfunction, property damage, serious bodily injury, and death and/or void your warranty.

## North America

- +1.800.753.9221
- Option 1 – Customer Care
- Option 2 – Technical Support

## Europe

### Netherlands:

- +31 800-0200135

### France:

- +33 800 901 793

## Europe Germany:

- 800 1890272

## Other Countries:

- +31 13 5835404

## APAC

### Shanghai:

- + 86 21 2412 1618/19

### Sydney:

- +61 2 9751 8500

## FAQ

- **Q: What are the RBWS2223 pouring basins made of?**

A: The RBWS2223 pouring basins are made from heat-resistant graphite.

- **Q: Can RBWS2223 pouring basins be used with any horizontal top-fill sleeves?**

A: RBWS2223 pouring basins are specifically designed for use with T-Series and B-Series horizontal top fill sleeves.

- **Q: Where can I find the nVent LENTON Cadweld Rebar Splicing System Instruction Manual?**

A: The nVent LENTON Cadweld Rebar Splicing System Instruction Manual can be found at [www.nvent.com](http://www.nvent.com) or obtained from your nVent customer service representative.

Our powerful portfolio of brands: [nVent.com](http://nVent.com)  
CADDY ERICO HOFFMAN RAYCHEM SCHROFF

© 2023 nVent. All nVent marks and logos are owned or licensed by nVent Services GmbH or its affiliates. All other trademarks are the property of their respective owners. nVent reserves the right to change specifications without notice.



**[nVent RBWS2223M Angular Pouring Basin](#)** [pdf] Instructions  
RBWS2223E, RBWS2223F, RBWS2223M, RBWS2223M Angular Pouring Basin,  
RBWS2223M, Angular Pouring Basin, Pouring Basin, Basin

References

- [🌟 The Future of Connection and Protection | nVent](#)
- [🌟 The Future of Connection and Protection | nVent](#)
- [User Manual](#)