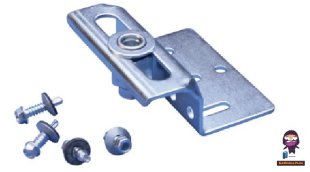



EB0856 Tooless
Mounting
Button



nVent EB0856 Tooless Mounting Button Instruction Manual

[Home](#) » [nVent](#) » nVent EB0856 Tooless Mounting Button Instruction Manual 

Contents

- [1 nVent EB0856 Tooless Mounting Button](#)
- [2 Product Overview](#)
- [3 Technical Specifications:](#)
- [4 Features:](#)
- [5 Environmental Conditions:](#)
- [6 Installation:](#)
- [7 FAQ:](#)
- [8 Documents / Resources](#)
 - [8.1 References](#)



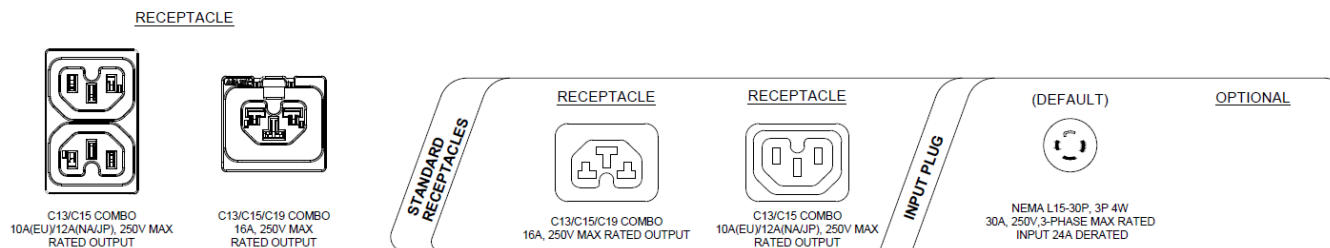
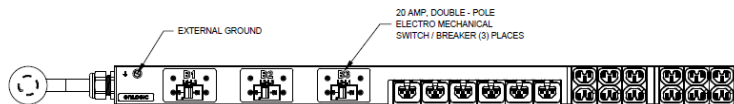
nVent EB0856 Tooless Mounting Button



Product Overview

Installation:

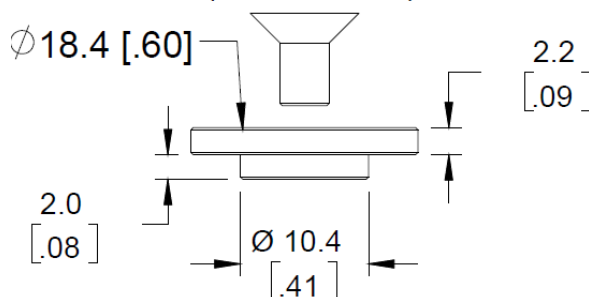
1. Installation shall comply with all applicable national, state, and local codes.
2. Primary dimensions are in millimeters. Secondary dimensions are in inches.
3. Universal mounting bracket is an alternative mounting method to the toolless mount for 3rd party enclosures.
Bracket is provided with the unit.



NOTES:

1. INSTALLATION SHALL COMPLY WITH ALL APPLICABLE NATIONAL, STATE AND LOCAL CODES.
2. PRIMARY DIMENSIONS ARE IN MILLIMETERS. SECONDARY DIMENSIONS ARE IN [INCHES]
3. UNIVERSAL MOUNTING BRACKET IS AN ALTERNATIVE MOUNTING METHOD TO THE TOOLLESS MOUNT FOR 3RD PARTY ENCLOSURES. BRACKET IS PROVIDED WITH THE UNIT.
4. DETAILED INSTALLATION INSTRUCTIONS CAN BE FOUND IN THE QUICK START GUIDE
5. CONNECT EXTERNAL EARTH GROUND TO THE 10-32 SIZE THREADED NUT
6. SEE PRODUCT DOCUMENTATION FOR FURTHER INFORMATION
7. INPUT PLUG CONFIGURATION (SEE IDENTIFICATION TABLE) FOR DUALRATED UNITS, NEMA PLUGS ARE NAM RATED ONLY AND CAPTIVE AUS/NZ PLUGS ARE EMEARATED ONLY.

BUTTON MOUNTING SCREW (INCLUDED)



NOTES:

1. INSTALLATION SHALL COMPLY WITH ALL APPLICABLE NATIONAL, STATE AND LOCAL CODES.
2. SEE PRODUCT DOCUMENTATION FOR FURTHER INFORMATION

Power Connection:

Connect external earth ground to the 10-32 size threaded nut.

Detailed Installation:

Detailed installation instructions can be found in the quick start guide.

Product Documentation:

Refer to the product documentation for further information.

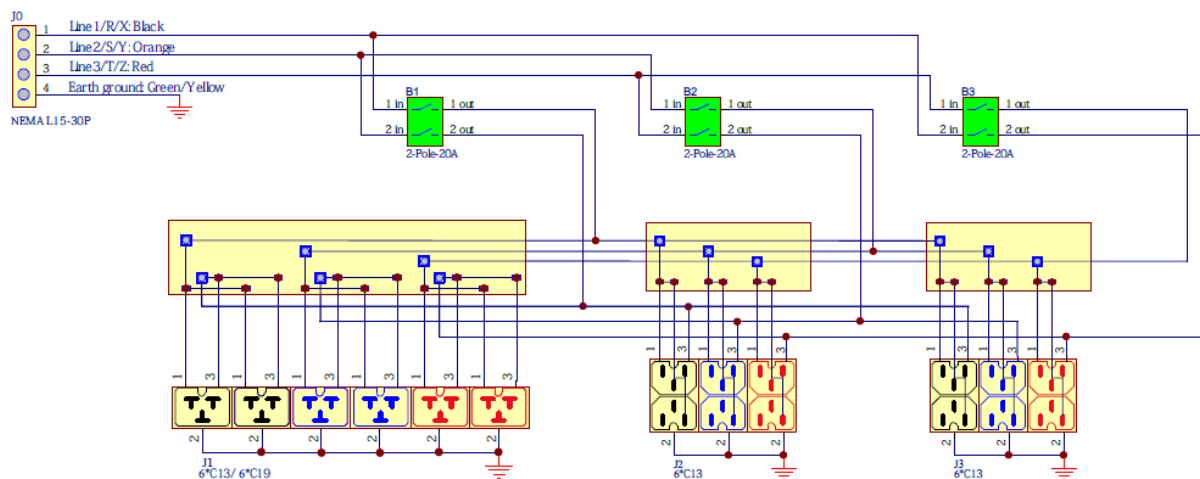
COMPLIANCE LABEL

NOTES:

1. INTERNAL WIRING

- WIRE TYPE: UL AWM 1015, 10 & 12 & 18 AWG
- LINE 1/R/X COLOR: BLACK
- LINE 2/S/Y COLOR: ORANGE
- LINE 3/T/Z COLOR: RED
- EARTH GROUND COLOR: GREEN/YELLOW

2. FOR FINISHED GOOD PART NUMBER SEE IDENTIFICATION



INTERNAL WIRING SCHEMATIC DIAGRAM

NOTES:

1. INSTALLATION SHALL COMPLY WITH ALL APPLICABLE NATIONAL, STATE AND LOCAL CODES.
2. SEE PRODUCT DOCUMENTATION FOR FURTHER INFORMATION.
3. THIS DRAWING DEPICTS THE POWER SYSTEM CONNECTIONS AND IS NOT REPRESENTATIVE OF THE PHYSICAL LAYOUT. PLEASE REFER TO MECHANICAL DRAWINGS FOR PHYSICAL LAYOUT.

FAQ:

Q: What is the input voltage range for this product?

A: The input voltage range is 200-240VAC.

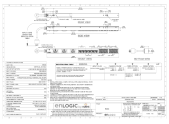
Q: How many outlets and what types are available?

A: There are (12) C13/C15 outlets and (6) C13/C15/C19 outlets.

Q: What is the rated power of the product?

A: The rated power is 8.6 KVA.

Documents / Resources



[nVent EB0856 Tooless Mounting Button](#) [pdf] Instruction Manual
EB0856, EB0856 Tooless Mounting Button, Tooless Mounting Button, Mounting Button, Button

References

- [User Manual](#)

Manuals+. Privacy Policy

This website is an independent publication and is neither affiliated with nor endorsed by any of the trademark owners. The "Bluetooth®" word mark and logos are registered trademarks owned by Bluetooth SIG, Inc. The "Wi-Fi®" word mark and logos are registered trademarks owned by the Wi-Fi Alliance. Any use of these marks on this website does not imply any affiliation with or endorsement.