



nVent CSBMA050050 CSBMA Structural Attachment Fitting Instruction Manual

[Home](#) » [nVent](#) » nVent CSBMA050050 CSBMA Structural Attachment Fitting Instruction Manual 

Contents

- [1 nVent CSBMA050050 CSBMA Structural Attachment Fitting](#)
- [2 Product Information](#)
- [3 Product Usage Instructions](#)
- [4 Part Number](#)
- [5 INFORMATION](#)
- [6 WARNING](#)
- [7 INSTALLATION](#)
- [8 Documents / Resources](#)
 - [8.1 References](#)



nVent CSBMA050050 CSBMA Structural Attachment Fitting



Product Information

- Product Name: CSBMA050050(XX) and CSBMA050075(XX)
- Part Number: CSBMA050050(XX) and CSBMA050075(XX)
- Attachment Hole: 1/2 inch (13 mm) and 3/4 inch (19 mm)
- Finish Specifier: (XX)
- Load Ratings:
 - **UL Loads (Listed for Structural Attachment):**
 - Parallel to Structure, Perpendicular to Beam: 680 lb (3,025 N)
 - Perpendicular to Structure, Perpendicular to Beam: 1,100 lb (4,893 N)
 - Parallel to Structure, Parallel to Beam: 1,300 lb (5,783 N)
 - **FM Horizontal Load Ratings:**
 - Installation Angle 30 – 44: 3,290 lb (14,630 N)
 - Installation Angle 45 – 59: 4,520 lb (20,100 N)
 - Installation Angle 60 – 74: 5,540 lb (24,640 N)
 - Installation Angle 75 – 90: 6,200 lb (27,570 N)

Product Usage Instructions

1. Ensure that the Sway Brace assemblies are installed in accordance with NFPA-13 and the manufacturer's installation instructions.
2. Use the required type, number, and size of fasteners for the structure attachment fitting in accordance with NFPA-13.
3. Only use SAE grade 5 or higher strength fasteners when assembling other structural fittings or braces to CSBMA.
4. Combine CSBMA with CSBUNIV050(XX) and CSBU1 for proper installation.
5. CSBMA050050(XX) and CSBMA050075(XX) do not include Structure Attachment Fittings.
6. For concrete installation, use a cast-in-place anchor, wedge, pre-set, or concrete anchor screw.

Part Number

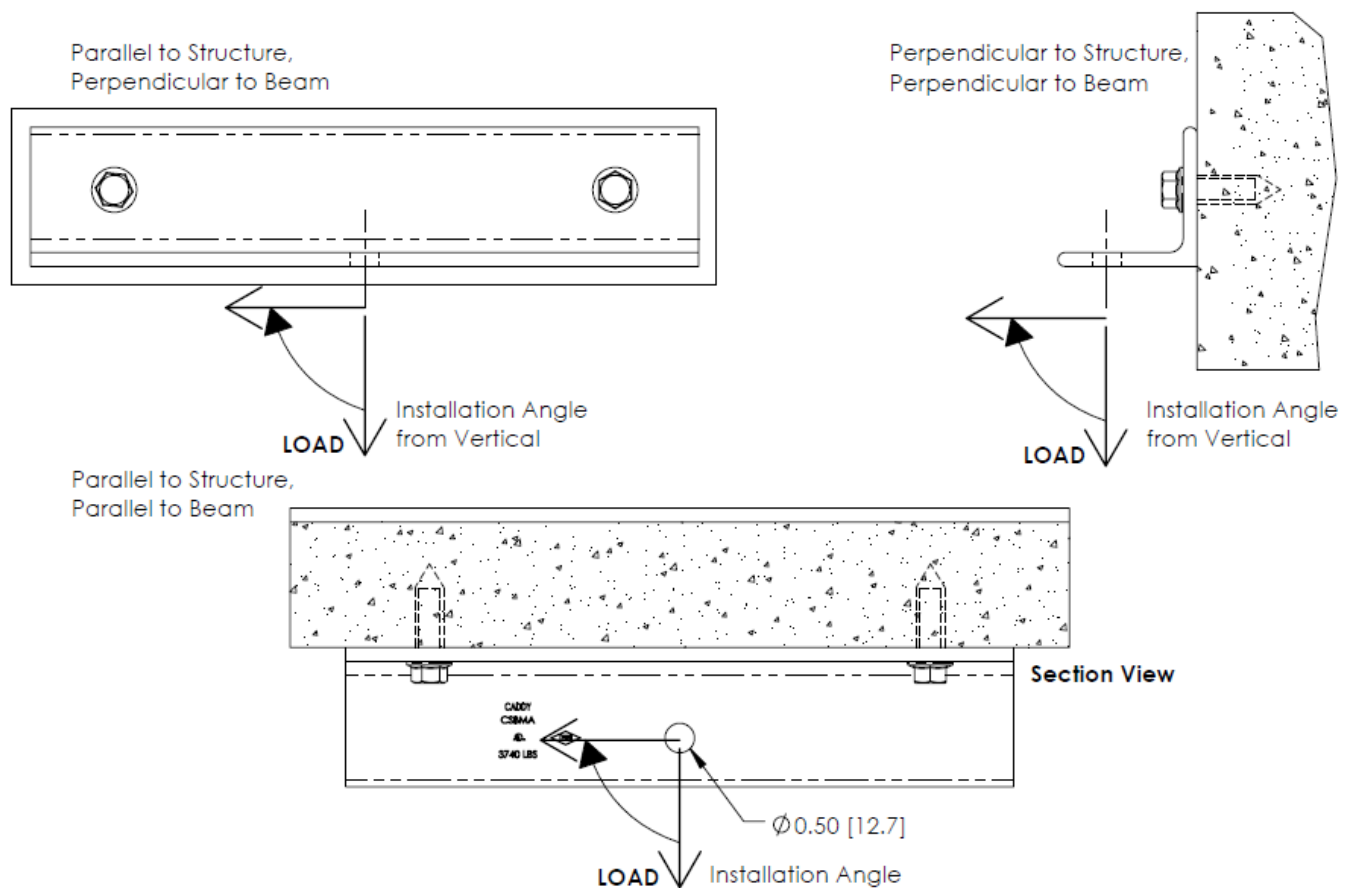
*Part Number	Attachment Hole	
	Inch	mm
CSBMA050050(XX)	1/2	13
CSBMA050075(XX)	3/4	19

*(XX) = Finish Specifier

INFORMATION

- Sway Brace assemblies are intended to be installed in accordance with NFPA-13 and the manufacturer's installation instructions.
- The required type, number, and size of fasteners used for the structure attachment fitting shall be in accordance with NFPA-13.
- Only SAE grade 5 or higher strength fasteners are to be used when assembling other structural fittings or braces to CSBMA.

- CSBMA is a Structural Attachment Fitting. It is intended to be combined with CSBUNIV050(XX) and CSBU1.



WARNING

nVent products shall be installed and used only as indicated in nVent product instruction sheets and training materials.

1. Instruction sheets are available at www.nVent.com and from your nVent customer service representative.
2. nVent products must never be used for a purpose other than the purpose for which they were designed or in a manner that exceeds specified load ratings.
3. All instructions must be completely followed to ensure proper and safe installation and performance.
4. Improper installation, misuse, misapplication or other failure to completely follow nVent's instructions and warnings may cause product malfunction, property damage, serious bodily injury and/or death, and void your warranty.
5. Products that are manufactured using spring steel components shall be used only in a non-corrosive indoor environment.
6. All pipe supports, hangers, intermediate components and structural attachments must ONLY be used as described herein and are NEVER to be used for any other purpose.

NOTE: All load ratings are for static conditions and do not account for dynamic loading such as wind, water, or seismic loads, unless otherwise noted.

The customer is responsible for:

- **a.** Conformance to all governing codes.
- **b.** The integrity of structures to which the products are attached, including their capability of safely accepting

the loads imposed, as evaluated by a qualified engineer.

- c. Using appropriate industry-standard hardware as noted above.

SAFETY INSTRUCTIONS:

All governing codes and regulations and those required by the job site must be observed. Always use appropriate safety equipment such as eye protection, hard hat, and gloves as appropriate to the application.

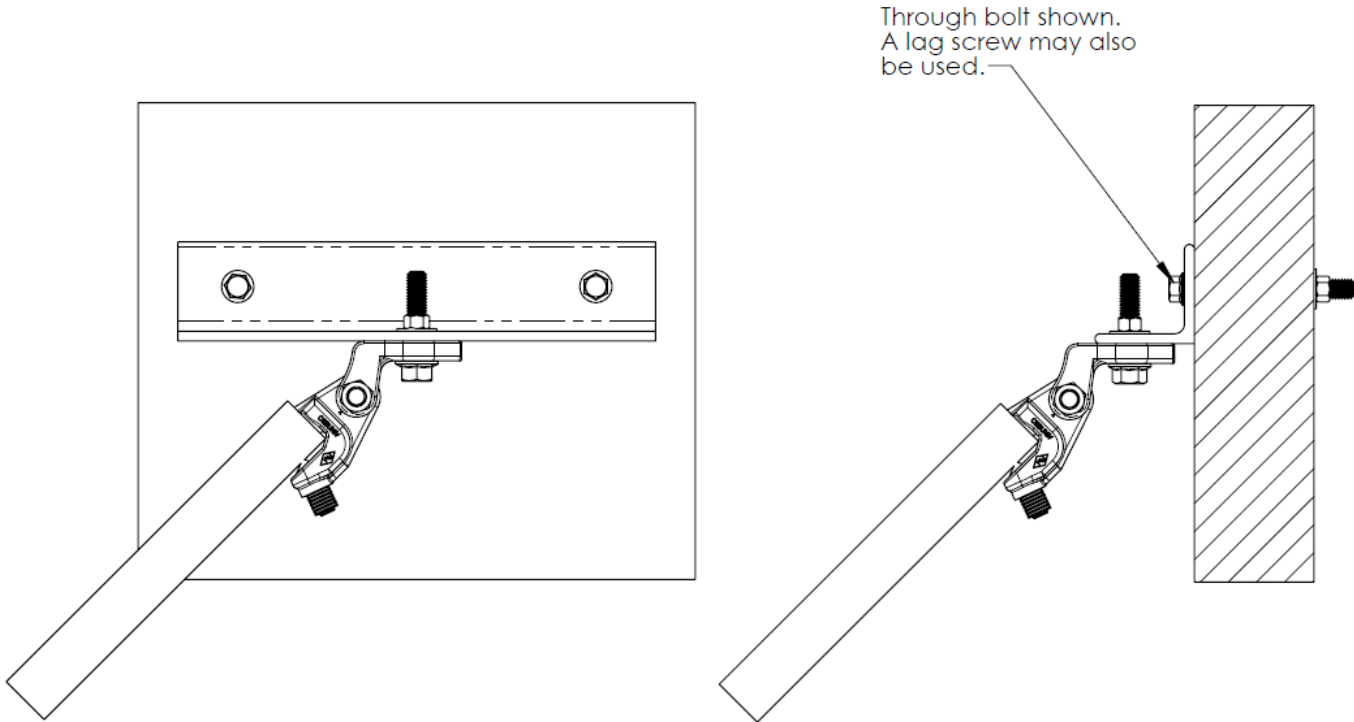
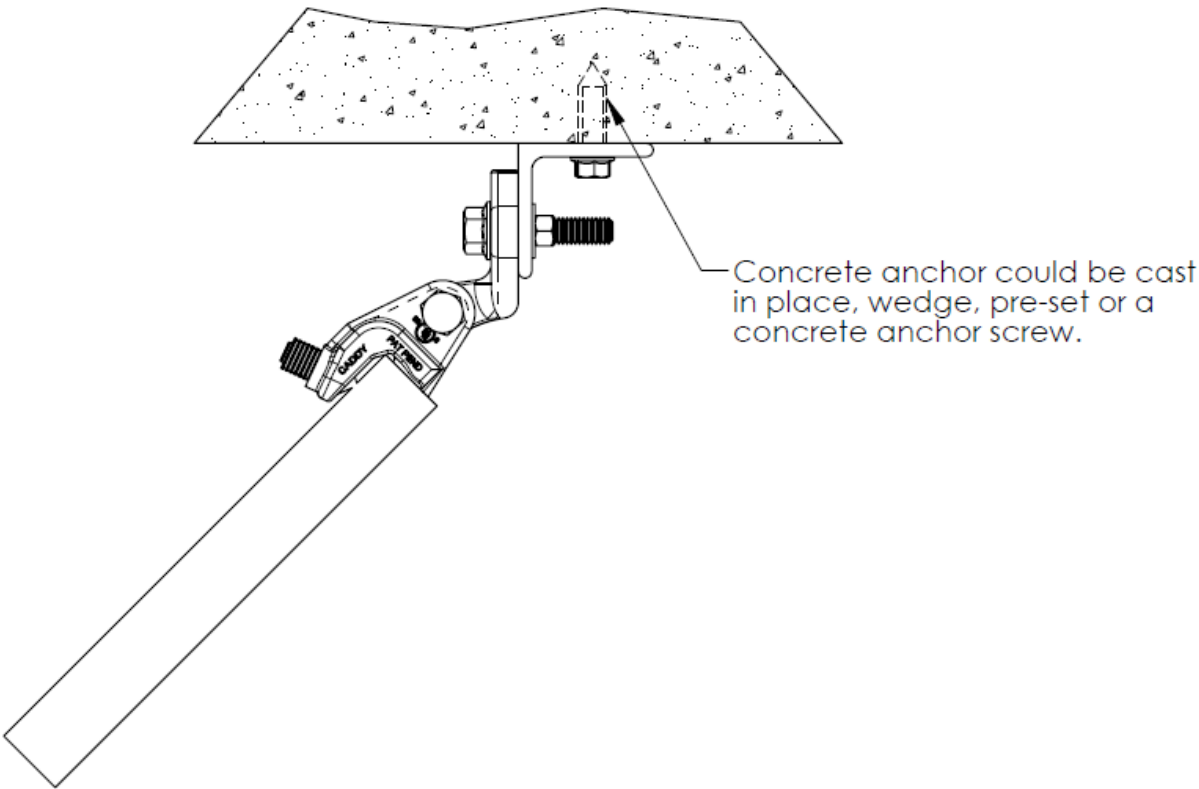
INSTALLATION

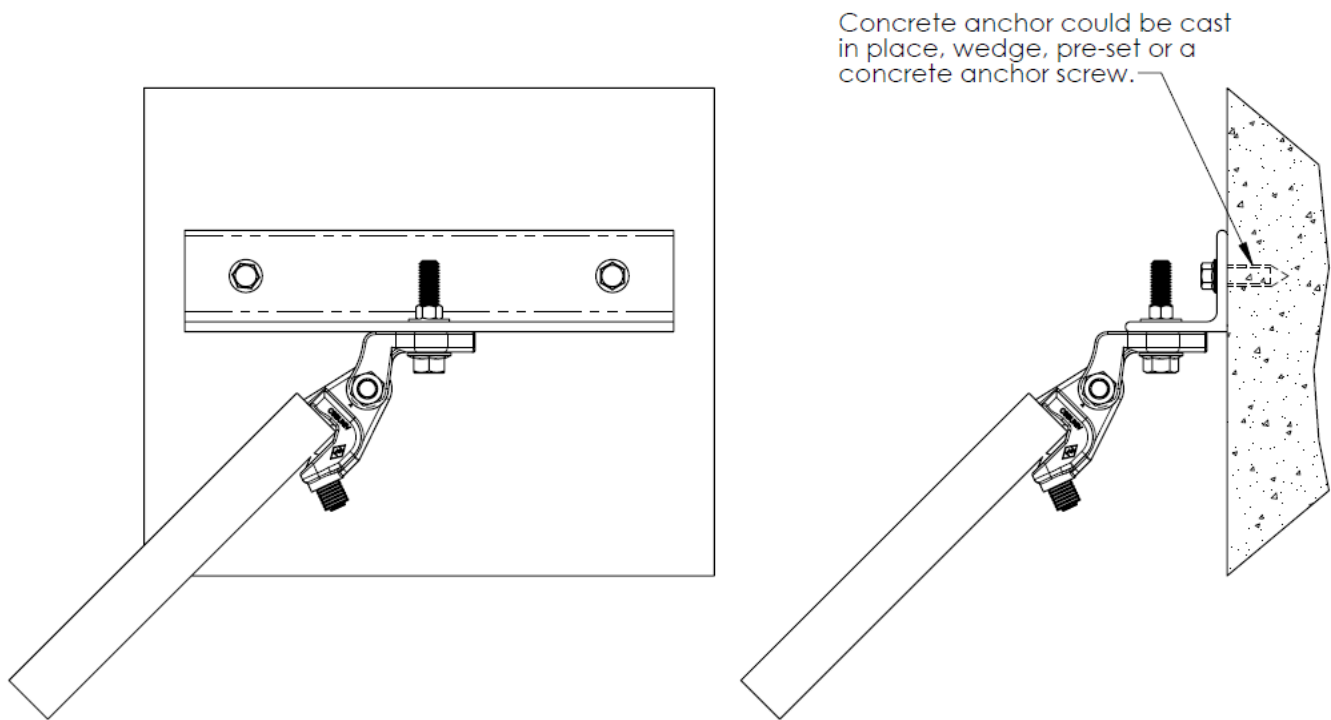
UL Loads (Listed for Structural Attachment)

UL Loads (Listed for Structural Attachment)				
Part Number	Structure Attachment Fitting	Parallel to Structure Perpendicular to Beam	Perpendicular to Structure Perpendicular to Beam	Parallel to Structure Parallel to Beam
CSBMA050050(XX)	CSBUNIV050(XX)	680 lb (3,025 N)		
	CSBU1			
	CSBURC12	1,100 lb (4,893 N)		
	CSBNPC12	1,300 lb (5,783 N)		
CSBMA050075(XX)	CSBUNIV050(XX)	680 lb (3,025 N)		
	CSBU1			
	CSBURC12	1,100 lb (4,893 N)		
	CSBNPC12	1,300 lb (5,783 N)		

1. Structure Attachment Fittings are not included with CSBMA050050(X 1. X) and CSBMA050075(XX)

Part Number	FM Horizontal Load Ratings			
	Installation Angle			
	30° - 44°	45° - 59°	60° - 74°	75° - 90°
CSBMA050050(XX)	3,290 lb	4,520 lb	5,540 lb	6,200 lb
CSBMA050075(XX)	(14,630 N)	(20,100 N)	(24,640 N)	(27,570 N)

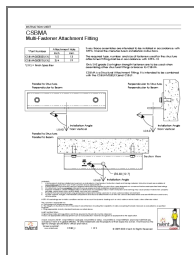




nVent, nVent CADDY, nVent ERICO Cadweld, nVent ERICO Critec, nVent ERICO, nVent ERIFLEX, and nVent LENTON are owned by nVent or its global affiliates. All other trademarks are the property of their respective owners. nVent reserves the right to change specifications without prior notice.

TECHNICAL SUPPORT: www.nVent.com

Documents / Resources



[nVent CSBMA050050 CSBMA Structural Attachment Fitting](#) [pdf] Instruction Manual
CSBMA050050 CSBMA Structural Attachment Fitting, CSBMA050050, CSBMA Structural Attachment Fitting, Structural Attachment Fitting, Attachment Fitting

References

- [🔥 The Future of Connection and Protection | nVent](#)