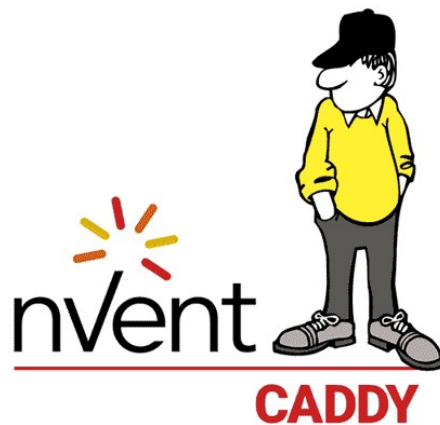




nVent 8PSF Push In Conduit Clamp with Shot Fire Bracket 1 2 Inch Emt Owner's Manual

[Home](#) » [nVent](#) » nVent 8PSF Push In Conduit Clamp with Shot Fire Bracket 1 2 Inch Emt Owner's Manual 



**PUSH IN CONDUIT CLAMP WITH SHOT-FIRE BRACKET, 1/2" EMT,
0.709"—0.866" OD**

Contents

- [1 CATALOG NUMBER](#)
- [2 FEATURES](#)
- [3 PRODUCT ATTRIBUTES](#)
- [4 ADDITIONAL PRODUCT DETAILS](#)
- [5 DIAGRAMS](#)
- [6 WARNING](#)
- [7 Documents / Resources](#)
 - [7.1 References](#)

CATALOG NUMBER

8PSF



FEATURES

- Push-in installation of conduit
- Eliminates need for offset bending conduit
- Complete with shot-fire bracket and pre-assembled drive pin from DEWALT®
- Quickly and easily attaches to concrete, steel or composite metal decking
- Integrated pin installs easily using powder-actuated or single-shot gas-actuated tools
- ICC-ES ESR-2024 evaluation report available for drive pin from DEWALT®

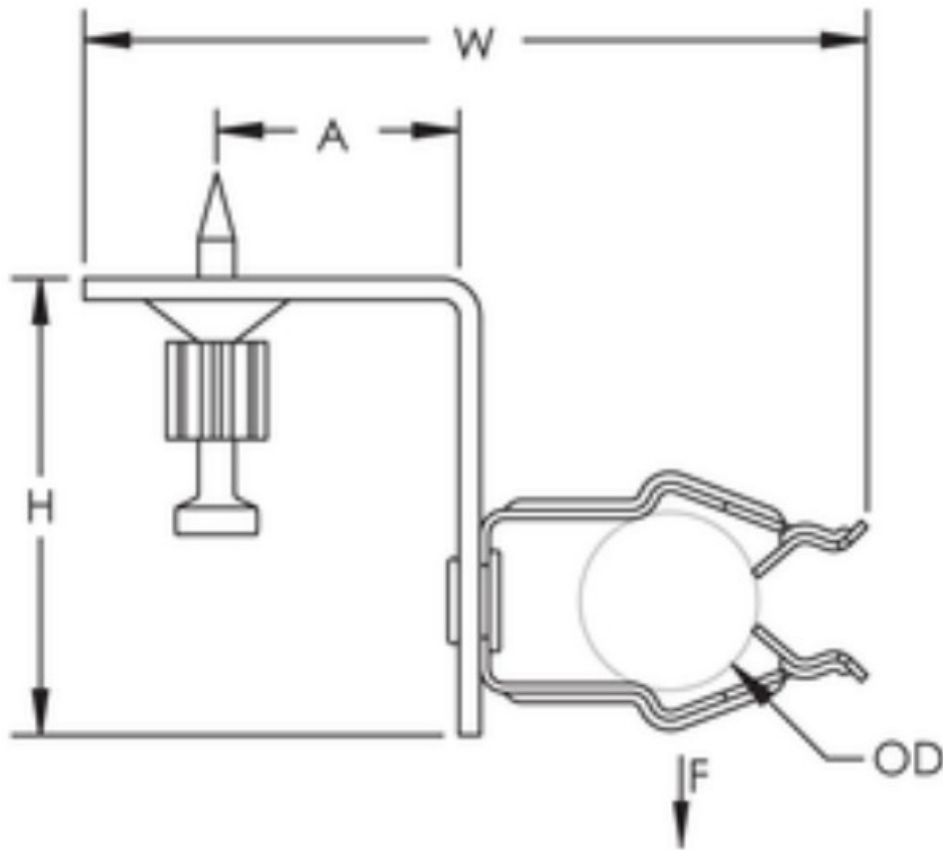
PRODUCT ATTRIBUTES

- Material: Steel;Spring Steel
- Finish: Electrogalvanized;nVent CADDY Armour
- EMT Conduit Size: 1/2"
- Outer Diameter: 0.709" – 0.866"
- Height: 1 11/16"
- Width: 2 15/16"
- A: 1.300"
- Ultimate Static Load: 15 lb

ADDITIONAL PRODUCT DETAILS

Uses Powers Fasteners, Inc. part number 50032.
Static load was established based on a 1" (25.4 mm) embedment depth and 3,000 psi (20.68 MPa) lightweight concrete. For variations in embedment and material please consult anchors.dewalt.com.
Pre-assembled drive pin from Powers Fasteners, Inc. works with Powers® C4CZ, Simpson® GCN-MEPKT, SPIT® P1000, P200, P2201, P3500 / PA3500, P35s, P45, P60, P7201, Sniper; Ramset® 721, Cobra, D45 / D60 / D60L, M70, SA270, T3SS, TS750P, TS60P, Viper; Hilti® DX35, DX350 / DX351 / DX36M, DX100 / DX200, DX460, DXA40, DXA41, DXE72 / DX400; Würth® Diva-1, BST-1, BST-2 or equivalent nailers.

DIAGRAMS



WARNING

nVent products shall be installed and used only as indicated in nVent's product instruction sheets and training materials.

Instruction sheets are available at www.nvent.com and from your nVent customer service representative. Improper installation, misuse, misapplication or other failure to completely follow nVent's instructions and warnings may cause product malfunction, property damage, serious bodily injury and death and/or void your warranty.

North America +1.800.753.9221 Option 1 – Customer Care Option 2 – Technical Support	Europe Germany: 800 1890272 Other Countries: +31 13 5835404
Europe Netherlands: +31 800-0200135 France: +33 800 901 793	APAC Shanghai: + 86 21 2412 1618/19 Sydney: +61 2 9751 8500

Our powerful portfolio of brands:

nVent.com CADDY ERICO HOFFMAN RAYCHEM SCHROFF
TRACER

© 2023 nVent. All nVent marks and logos are owned or licensed by nVent Services GmbH or its affiliates. All other trademarks are the property of their respective owners.




nVent reserves the right to change specifications without notice.



Documents / Resources

	<p>nVent 8PSF Push In Conduit Clamp with Shot Fire Bracket 1 2 Inch Emt [pdf] Owner's Manual</p> <p>8PSF Push In Conduit Clamp with Shot Fire Bracket 1 2 Inch Emt, 8PSF, Push In Conduit Clamp with Shot Fire Bracket 1 2 Inch Emt, Conduit Clamp with Shot Fire Bracket 1 2 Inch Emt, Fire Bracket 1 2 Inch Emt, Bracket 1 2 Inch Emt</p>
---	---

References

-  [Anchoring and Fastening Systems from DEWALT Anchors & Fasteners](#)
-  [Building a more Sustainable and Electrified World | nVent](#)
-  [Building a more Sustainable and Electrified World | nVent](#)
- [User Manual](#)