



nvent 60130-885 Controller Box Instruction Manual

[Home](#) » [nVent](#) » nvent 60130-885 Controller Box Instruction Manual 

Contents

- [1 nvent 60130-885 Controller Box](#)
- [2 Product Information](#)
- [3 Product Usage Instructions](#)
- [4 Front](#)
- [5 Rear](#)
- [6 Functional overview](#)
- [7 Electrical drawing](#)
- [8 Item numbers](#)
- [9 Documents / Resources](#)
- [10 Related Posts](#)



nvent 60130-885 Controller Box



Product Information

- The Controller Box is a device designed to control the opening and closing of the top cover for aisle containment in server rooms or data centers. The device can be mounted on a 19-inch rack with 1U height or on the top cover of the cabinet using Velcro.
- The Controller Box comes with a plug for connection of 2 potential-free contacts (normally closed) to control the top cover, which is delivered with bypass. The top covers can be opened using the test button or an external signal.
- It is important to note that only persons familiar with the system and instructed with respect to dangers and risks involved, also having the required qualifications, should carry out the commissioning of the system and maintenance works. Regular checks should be made to ensure that the controller box is working correctly.

Product Usage Instructions

1. Mount the Controller Box on a 19-inch rack with 1U height or on the top cover of the cabinet using Velcro.
2. Connect the plug for 2 potential-free contacts (normally closed) to control the top cover.
3. Use the test button or an external signal to open and close the top covers for aisle containment.
4. Regularly check if the controller box works correctly.
5. Carry out instructed maintenance works only to avoid danger through faulty commissioning.
 - **Warning:** There is an increased risk of injury to persons who perform tasks for which they are not suitably qualified or trained. Only persons familiar with the system and instructed with respect to dangers and risks involved, also having the required qualifications, should carry out the commissioning of the system and maintenance works.
 - **Disclaimer:** Pentair shall not be held liable for any errors that may be included in this documentation. Liability for direct and indirect damage that occurs in connection with the supply or use of this documentation is excluded to the extent permitted by law. Pentair reserves the right to change this document, including the disclaimer of liability, at any time and Pentair shall not be liable for the potential consequences of these changes.

WARNING

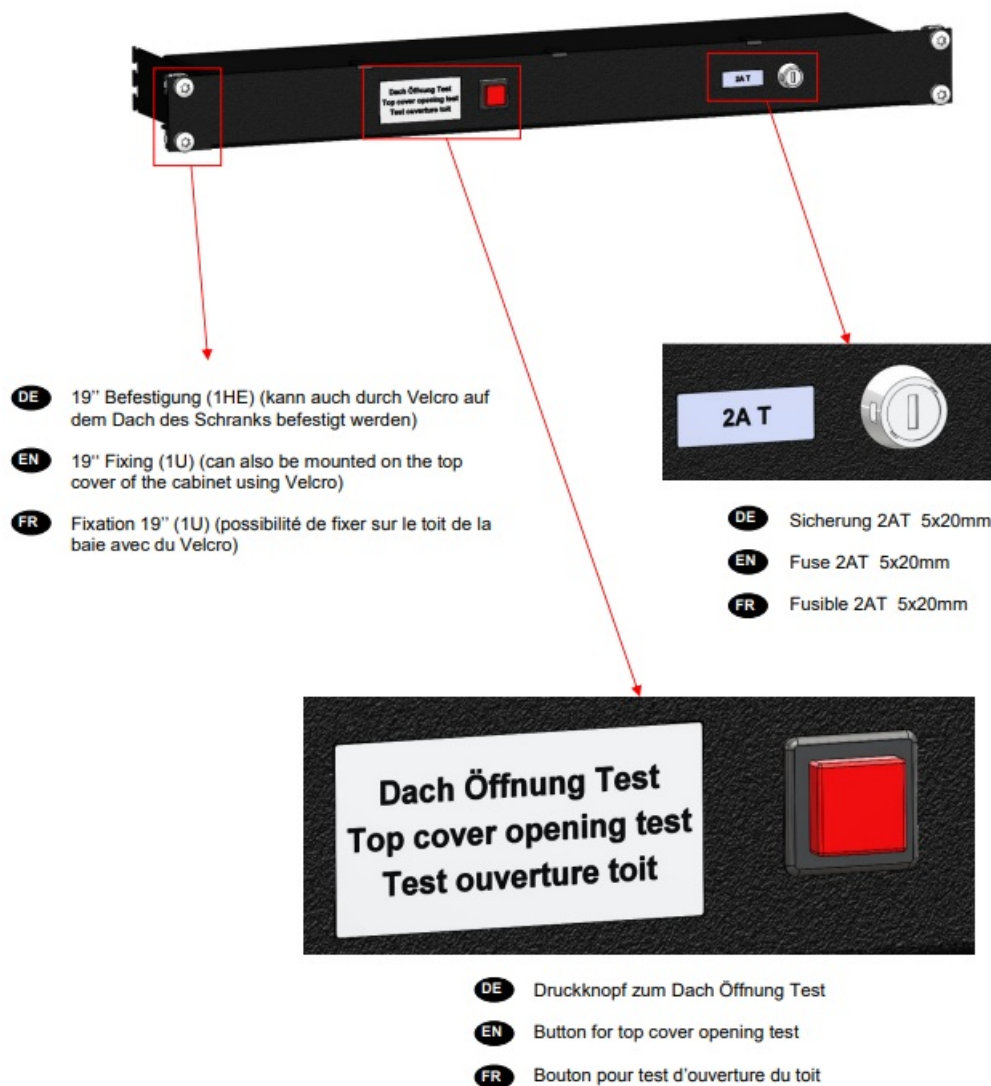
- **Danger through faulty commissioning! Carry out instructed maintenance works only!**

- There is an increased risk of injury to persons who perform tasks for which they are not suitably qualified or trained.
- The commissioning of the system and maintenance works shall only be carried out by persons familiar with the system and instructed with respect to dangers and risks involved, also having the required qualifications.
- Check regularly if the controller box works correctly.

- **Disclaimer**

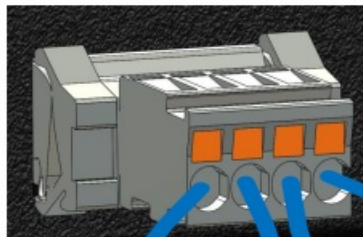
- Pentair shall not be held liable for any errors that may be included in this documentation. Liability for direct and indirect damage that occurs in connection with the supply or use of this documentation is excluded to the extent permitted by law.
- Pentair reserves the right to change this document, including the disclaimer of liability, at any time and Pentair shall not be liable for the potential consequences of these changes.

Front



Rear

- DE** Stecker für den Anschluss von 2 potentialfreien Kontakten (Öffner) zur Steuerung der Dächer. Geliefert mit Brücken.
- EN** Plug for connection of 2 potential free contacts (normally closed) to control the top cover. Delivered with bypass.
- FR** Connecteur servant au branchement de 2 contacts secs (normalement fermé) pour la commande des toits. Livré avec ponts.



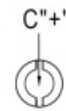
- DE** Winkel für Kabel Befestigung (Zugentlastung)
- EN** Bracket for cable fixing (Strain relief)
- FR** Equerre pour fixation de câble (Anti-traction)



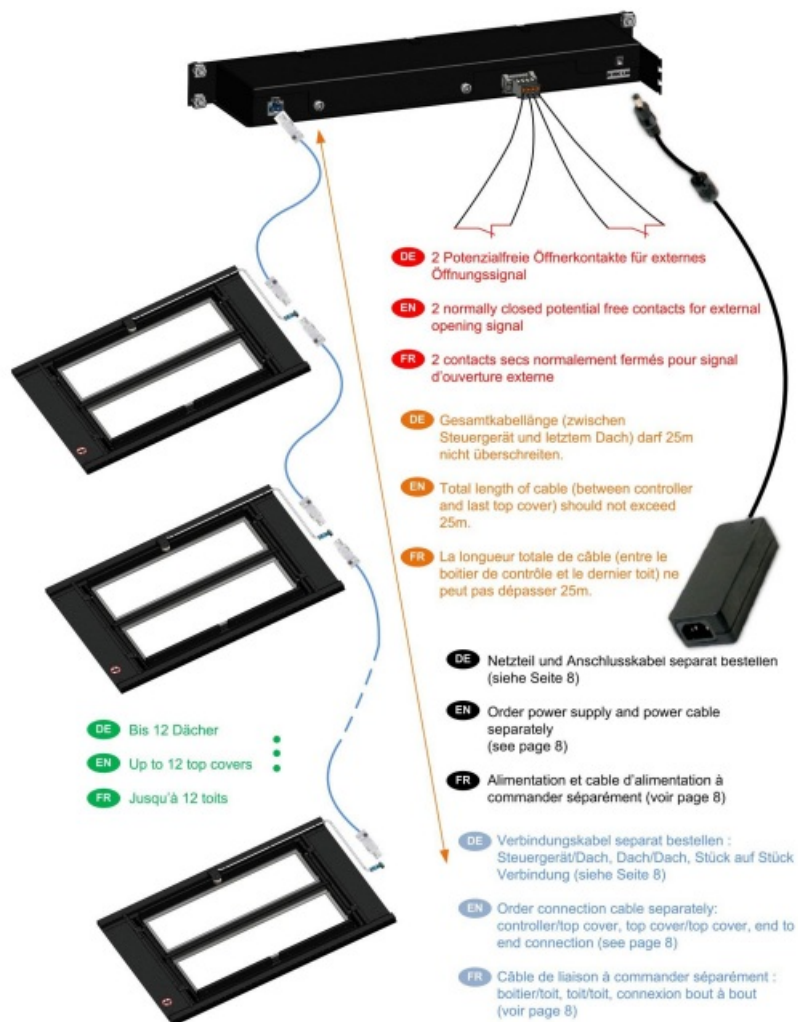
- DE** Stecker für Dach Anschluss
- EN** Socket for top cover connection
- FR** Prise pour connexion du toit

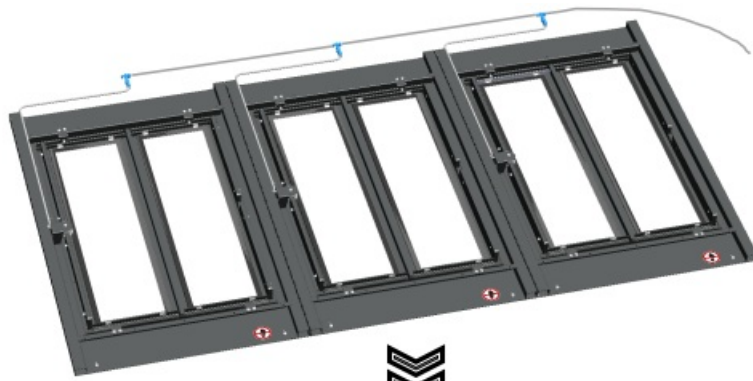


- DE** DC Buchse (2.1x5.5 mm) für Netzteil 24VDC, 1.5A
- EN** DC socket (2.1x5.5 mm) for 24VDC, 1.5A power supply
- FR** Connecteur DC (2.1x5.5 mm) pour alimentation 24VDC, 1.5A



Functional overview

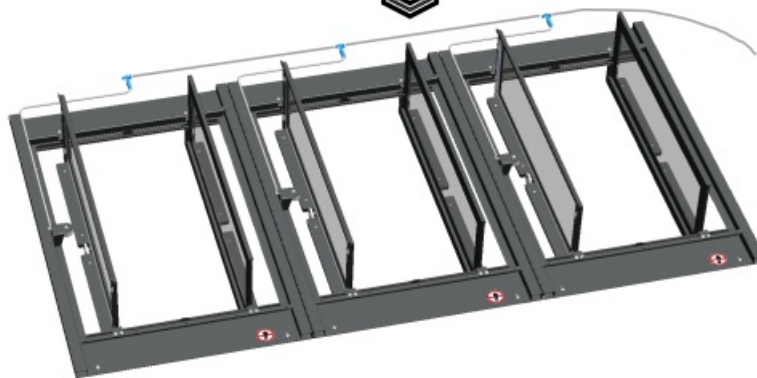
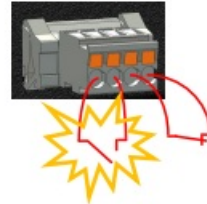




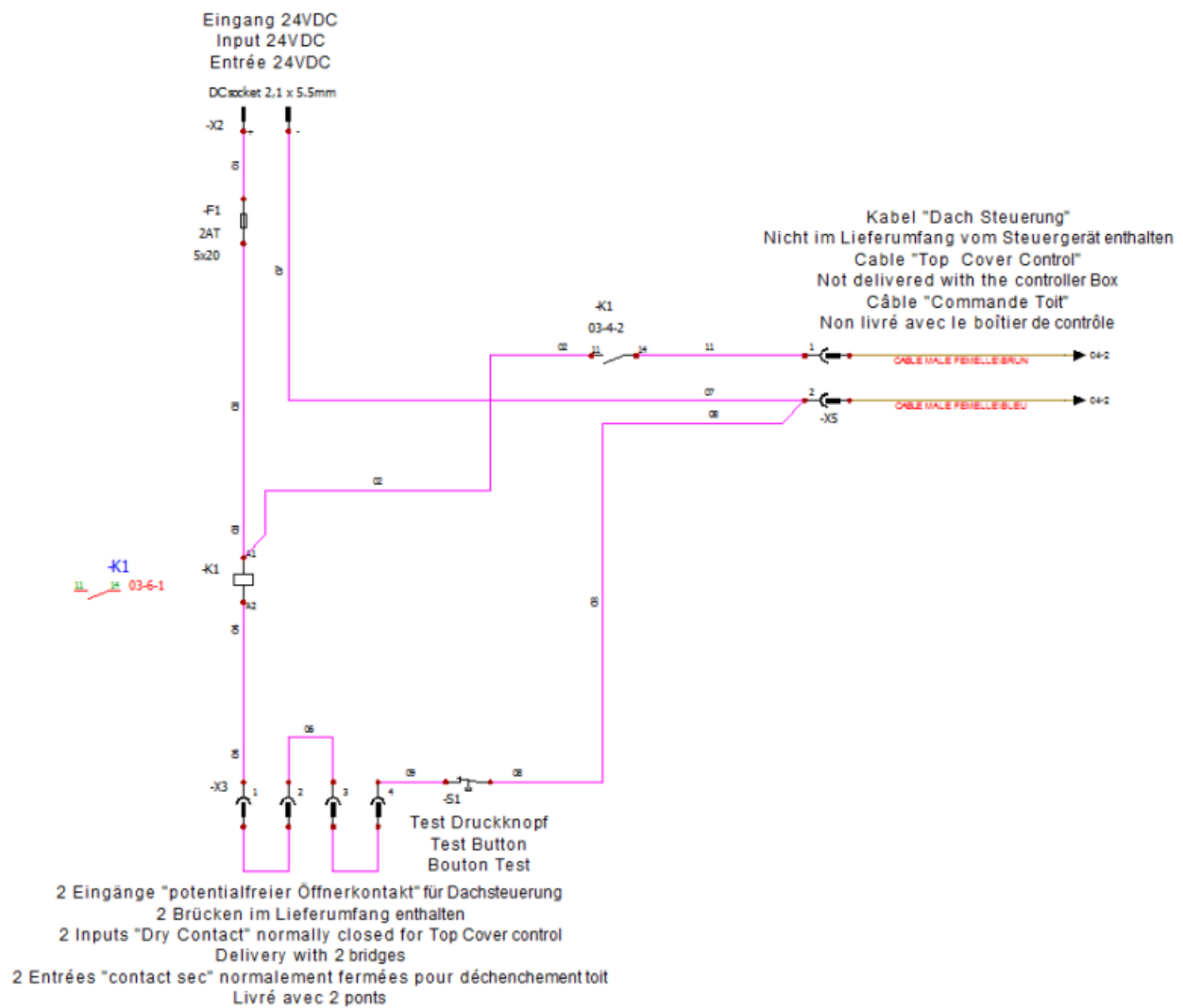
DE Die Dächer können durch den Test Druckknopf oder ein externes Signal geöffnet werden.

EN The top covers can be opened using the test button or an external signal.

FR Les toits peuvent être ouverts par le biais du bouton de test ou d'un signal externe.



Electrical drawing



Item numbers

Anlehnung Part number Référence	Bezeichnung Designation Désignation	Technische Daten Technical characteristics Caractéristiques technique
21130-592	Automatisches Dach 1200x600 Automatic top cover 1200x600 Toit automatique 1200x600	1200 mm x 600 mm RAL 7021
21130-593	Automatisches Dach 1200x800 Automatic top cover 1200x800 Toit automatique 1200x800	1200 mm x 800 mm RAL 7021
23130-205	Steuergerät Controller box Boitier de contrôle	1U RAL 7021
23130-206	Verbindungskabel 1m Cable de liaison 1m Connexion Cable 1m	1m 2x1,5mm ² Steuergerät/Dach, Dach/Dach, Stück auf Stück Verbindung controller/topcover, top cover/topcover, end to end connection Connexion Cable 1m boitier/toit toit, toit/toit, connexion bout à bout
23130-207	Verbindungskabel 2m Cable de liaison 2m Connexion Cable 2m	2m 2x1,5mm ² Steuergerät/Dach, Dach/Dach, Stück auf Stück Verbindung controller/topcover, top cover/topcover, end to end connection Connexion Cable 1m boitier/toit toit, toit/toit, connexion bout à bout
23130-226	Verbindungskabel 5m Cable de liaison 5m Connexion Cable 5m	5m 2x1,5mm ² Steuergerät/Dach, Dach/Dach, Stück auf Stück Verbindung controller/topcover, top cover/topcover, end to end connection Connexion Cable 1m boitier/toit toit, toit/toit, connexion bout à bout
23130-227	Netzeil 24VDC Power supply 24VDC Alimentation 24VDC	90-264VAC, 47-63Hz, 0,5A/230VAC INPUT : IEC C14 24VDC 1,67A 40W OUTPUT : Cable 1800 mm DC plug 2,1x5,5
62150-191	Anschlusskabel C13 - Schuko/UTE Power cable C13 - Schuko/UTE Câble d'alimentation C13 - Schuko/UTE	2500 mm, IEC C13 - Schuko/UTE Weitere Länge und Farbe im Schroff Katalog verfügbar For other lengths and colors please refer to the Schroff catalog Voir catalogue Schroff pour d'autres longueurs
60130-137	Anschlusskabel C13 - BS Power cable C13 - BS Câble d'alimentation C13 - BS	2500 mm, IEC C13 - BS Weitere Länge und Farbe im Schroff Katalog verfügbar For other lengths and colors please refer to the Schroff catalog Voir catalogue Schroff pour d'autres longueurs
60130-141	Anschlusskabel C13 - USA Power cable C13 - USA Câble d'alimentation C13 - USA	2500 mm, IEC C13 - USA Weitere Länge und Farbe im Schroff Katalog verfügbar For other lengths and colors please refer to the Schroff catalog Voir catalogue Schroff pour d'autres longueurs
60197-053	Anschlusskabel C13 - C14 Power cable C13 - C14 Câble d'alimentation C13 - C14	2500 mm, IEC C13 - IEC C14 Weitere Länge und Farbe im Schroff Katalog verfügbar For other lengths and colors please refer to the Schroff catalog Voir catalogue Schroff pour d'autres longueurs

WEB: nVent.com

Documents / Resources



[nvent 60130-885 Controller Box](#) [pdf] Instruction Manual
60130-885 Controller Box, 60130-885, Controller Box, Box, Controller