



[Home](#) » [nVent LENTON](#) » **nVent LENTON RBWS2223F 30 Degree Top Fill Angular Pouring Basin**
Owner's Manual 

Contents [[hide](#)]

- [1 nVent LENTON RBWS2223F 30 Degree Top Fill Angular Pouring Basin](#)
- [2 Specifications](#)
- [3 FEATURES](#)
- [4 PRODUCT ATTRIBUTES](#)
- [5 ADDITIONAL PRODUCT DETAILS](#)
- [6 Installation Guidelines](#)
- [7 DIAGRAMS](#)
- [8 Maintenance](#)
- [9 FAQs](#)
- [10 Documents / Resources](#)
 - [10.1 References](#)



nVent LENTON RBWS2223F 30 Degree Top Fill Angular Pouring Basin



Top fill pouring basins should be used on angular installations whenever the clearances of the structure allow. The compact size of the top-fill pouring basins helps ensure the best possible flow of filler material.

Specifications

- Catalog Number: RBWS2223F
- Material: Heat-resistant graphite
- Compatibility: T-Series and B-Series horizontal top fill sleeves
- Requires RBW167 pouring basin frame (sold separately)

FEATURES

- Made from heat-resistant graphite
- Durable, reusable and long-lasting
- Designed for use with T-Series and B-Series horizontal top fill sleeves

PRODUCT ATTRIBUTES

- Material: Graphite
- Diameter (Ø): 2 1/2"
- Length (L): 3.69

- Width (W): 3 1/2"
- Height (H): 5 1/2"
- Angle (a): 30 °

ADDITIONAL PRODUCT DETAILS

- RBWS2223 pouring basins require one RBW167 pouring basin frame (sold separately).
- Before installation, please read and understand all of the detailed instructions and safety notices provided in the nVent LENTON Cadweld Rebar Splicing System Instruction Manual.
- Sizes not shown may be available by special order. Contact your nVent LENTON representative for more information.

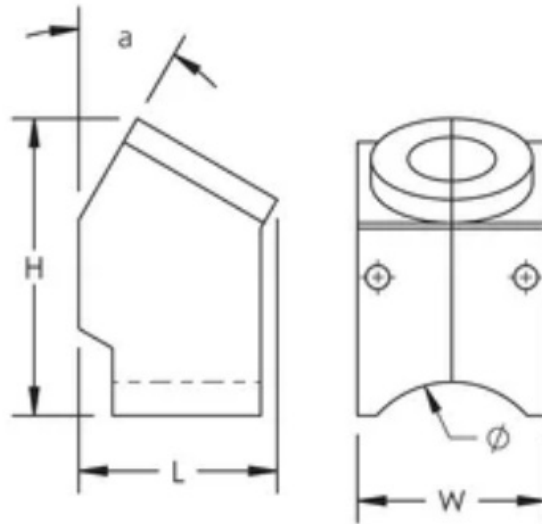
Installation Guidelines

Top fill pouring basins should be used on angular installations where clearances allow. Ensure to read and understand all detailed instructions and safety notices provided in the nVent LENTON Cadweld Rebar Splicing System Instruction Manual before installation.

Compatibility

Designed for use with T-Series and B-Series horizontal top fill sleeves. Ensure proper compatibility before installation.

DIAGRAMS



WARNING

nVent products shall be installed and used only as indicated in nVent's product instruction sheets and training materials. Instruction sheets are available at www.nvent.com and from your nVent customer service representative. Improper installation, misuse, misapplication or other failure to completely follow nVent's instructions and warnings may cause product malfunction, property damage, serious bodily injury and death and/or void your warranty.

Maintenance

The pouring basin is durable, reusable, and long-lasting. Regular maintenance checks are recommended to ensure optimal performance.

North America

+1.800.753.9221

Option 1 – Customer Care

Option 2 – Technical

Support

Europe

Netherlands

+31 800-0200135

France:

+33 800 901 793

Europe

Germany

800 1890272

Other Countries:

+31 13 5835404

APAC

Shanghai

+ 86 21 2412 1618/19

Sydney:

+61 2 9751 8500

2025 nVent. All nVent marks and logos are owned or licensed by nVent Services GmbH or its affiliates. All other trademarks are the property of their respective owners. nVent reserves the right to change specifications without notice. This document is system-generated.

FAQs

What is the primary application of the 30 Degree Top Fill Angular Pouring Basin?

It is designed primarily for use on angular installations where the structural clearances allow, facilitating the pouring process in those specific scenarios.

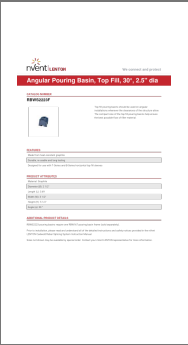
What are the material and durability features of this pouring basin?

The basin is made from heat-resistant graphite, making it durable, reusable, and long-lasting.

With what other components is the 30 Degree Top Fill Angular Pouring Basin compatible?


It is designed for use with T-Series and B-Series horizontal top fill sleeves, integrating well within those product lines for effective performance.


Documents / Resources

	<p>nVent LENTON RBWS2223F 30 Degree Top Fill Angular Pouring Basin [pdf] Owner's Manual</p> <p>RBWS2223F, RBWS2223F 30 Degree Top Fill Angular Pouring Basin, 30 Degree Top Fill Angular Pouring Basin, Top Fill Angular Pouring Basin, Angular Pouring Basin</p>
---	---

References

- [User Manual](#)

 nVent LENTON

 30 Degree Top Fill Angular Pouring Basin, Angular Pouring Basin, nVent LENTON, RBWS2223F, RBWS2223F 30 Degree Top Fill Angular Pouring Basin, Top Fill Angular Pouring Basin

Leave a comment

Your email address will not be published. Required fields are marked *

Comment *

Name

Email

Website

☐ Save my name, email, and website in this browser for the next time I comment.

Post Comment

Search:

e.g. whirlpool wrf535swhz

Search

[Manuals+](#) | [Upload](#) | [Deep Search](#) | [Privacy Policy](#) | [@manuals.plus](#) | [YouTube](#)

This website is an independent publication and is neither affiliated with nor endorsed by any of the trademark owners. The "Bluetooth®" word mark and logos are registered trademarks owned by Bluetooth SIG, Inc. The "Wi-Fi®" word mark and logos are registered trademarks owned by the Wi-Fi Alliance. Any use of these marks on this website does not imply any affiliation with or endorsement.