

[Skip to content](#)

## **Manuals+**

User Manuals Simplified.



# **nVent HOFFMAN SSTB Terminal Box Instruction Manual**

[Home](#) » [nVent HOFFMAN](#) » nVent HOFFMAN SSTB  
Terminal Box Instruction Manual

Contents [hide](#)

[1 SSTB Terminal Box](#)

[2 Product Information](#)

[3 Product Usage Instructions](#)

[4 Documents / Resources](#)

[5 Related Posts](#)



## **SSTB Terminal Box**



## **Product Information**

The product is an enclosure designed to protect electronic devices. It is important to note that when mounting the enclosure on or over a combustible surface, a floor plate of at least 1.43 mm galvanized or 1.6 mm uncoated steel extended at least 150 mm beyond the equipment on all sides must be installed. This is to prevent fire hazards.

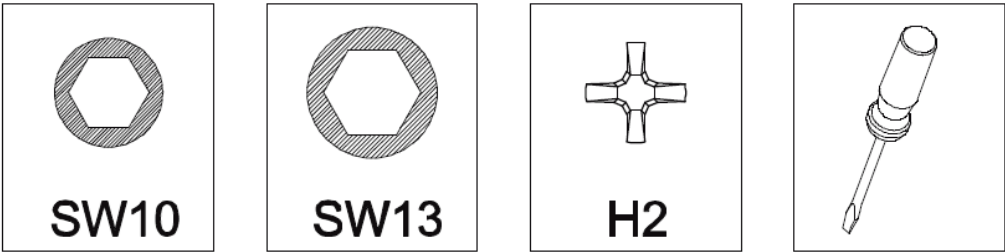
Additionally, to maintain the environmental integrity of the enclosure, devices with the same environmental ratings shall be used to close openings in customized enclosure. This ensures that the enclosure remains safe and functional.





**Product Usage Instructions**

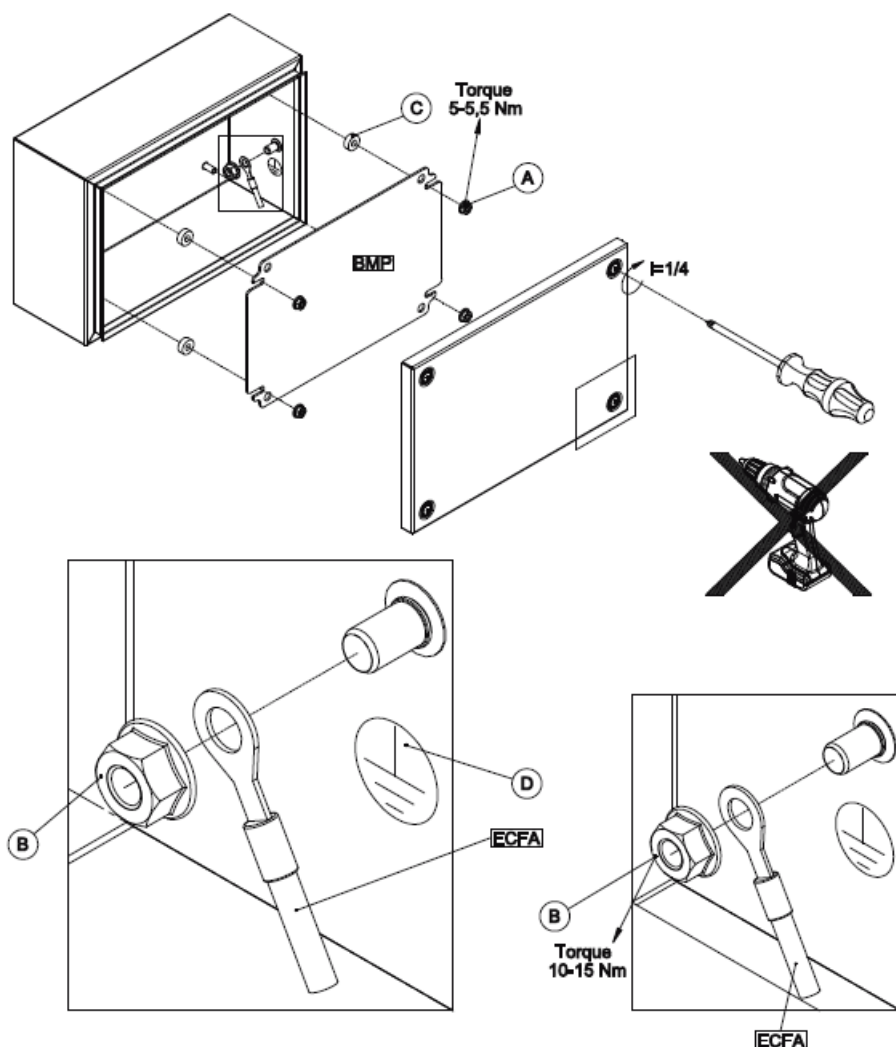
- 1. Ensure that when mounting the enclosure, it is not on or over a combustible surface. If it is, install a floor plate of at least 1.43 mm galvanized or 1.6 mm uncoated steel extended at least 150 mm beyond the equipment on all sides.
- 2. Only use devices with the same environmental ratings to close openings in customized enclosure. This will ensure that the enclosure remains safe and functional.

It is important to follow these instructions carefully to ensure proper usage and to prevent fire hazards or damage to the enclosure and electronic devices inside it.

**Hardware**



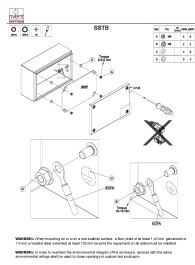
Ref.	Pic.	W (mm)	<600	≥600
A	 M6		4	6
B	 M8		2	2
C			4	6
D			2	2



**WARNING:** When mounting on or over a combustible surface, a floor plate of at least 1.43 mm galvanized or 1.6 mm uncoated steel extended at least 150 mm beyond the equipment on all sides must be installed.

**WARNING:** In order to maintain the environmental integrity of the enclosure, devices with the same environmental ratings shall be used to close openings in customized enclosure.

## Documents / Resources



[nVent HOFFMAN SSTB Terminal Box](#) [pdf] Instruction Manual  
SSTB 200x300x120mm, SSTB Terminal Box, SSTB, Terminal Box

## Manuals+,

- [home](#)
- [privacy](#)