

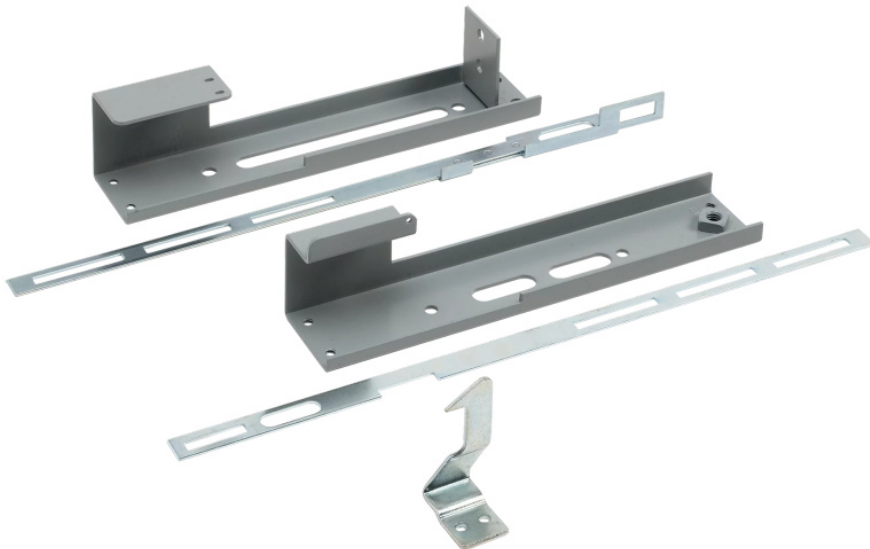


nVent HOFFMAN SITEL Operator Adapter Universal Cutout Owner's Manual

[Home](#) » [nVent HOFFMAN](#) » nVent HOFFMAN SITEL Operator Adapter Universal Cutout Owner's Manual 



OPERATOR ADAPTER UNIVERSAL CUTOUT,
SIEMENS LARGE HANDLE, GRAY, STEEL
CATALOG NUMBER
SITEL



Contents

- [1 SITEL Operator Adapter Universal Cutout](#)
- [2 FEATURES](#)
- [3 PRODUCT ATTRIBUTES](#)
- [4 ADDITIONAL PRODUCT DETAILS](#)
- [5 WARNING](#)
- [6 Documents / Resources](#)
 - [6.1 References](#)
- [7 Related Posts](#)

SITEL Operator Adapter Universal Cutout

Used on all nVent HOFFMAN Type 4 and 12 disconnect enclosures with a universal flange cutout. An operator adapter is required to install a disconnect in Bulletin A21, A28, A34, A35, and A4L3D HOFFMAN enclosures that have a universal cutout. Operator adapters include an adapter plate and additional components needed to interlock the master door with the disconnect operating mechanism. Installation instructions are included with each operator adapter. Each brand and type of disconnect requires a different operator adapter. Be sure to select the correct operator adapter and enclosure for the disconnect device selected. A 400A (or greater) disconnect switch and 600A (or greater) circuit breaker require the large handle. A 200A (or less) disconnect switch and 400A (or less) circuit breaker require a small handle.

FEATURES

Used on all nVent HOFFMAN Type 4 and 12 disconnect enclosures with a universal flange cutout
An operator adapter is required to install a disconnect in Bulletin A21, A28, A34, A35 and A4L3D HOFFMAN enclosures that have a universal cutout
Operator adapters include an adapter plate and additional components needed to interlock the master door with the disconnect operating mechanism
Installation instructions are included with each operator adapter
Each brand and type of disconnect requires a different operator adapter
A 400A (or greater) disconnect switch and 600A (or greater) circuit breaker require the large handle
A 200A (or less) disconnect switch and 400A (or less) circuit breaker require a small handle

PRODUCT ATTRIBUTES

Article Number: 28104
Height: 10.56 in
Width: 2.25 in
Depth: 0.62 in
Material: Mild Steel
Finish: Powder Coated
Color: Gray
Color Code: ANSI 61
Thickness: 12 ga
Brand and Type of Operator: Siemens I-T-E Max-Flex™; Large Handle

ADDITIONAL PRODUCT DETAILS

Please use new catalog numbers when ordering. Refer to the spec sheet for a catalog number cross-reference.

WARNING

nVent products shall be installed and used only as indicated in nVent's product instruction sheets and training materials.

Instruction sheets are available at www.nvent.com and from your nVent customer service representative. Improper installation, misuse, misapplication or other failure to completely follow nVent's instructions and warnings may cause product malfunction, property damage, serious bodily injury and death and/or void your warranty.

Our powerful portfolio of brands:

CADDY
ERICO
HOFFMAN
RAYCHEM
SCHROFF
TRACER

© 2024 nVent. All nVent marks and logos are owned or licensed by nVent Services GmbH or its affiliates. All other trademarks are the property of their respective owners.



nVent reserves the right to change specifications without notice.



Documents / Resources

	nVent HOFFMAN SITEL Operator Adapter Universal Cutout [pdf] Owner's Manual SITEL, SITEL Operator Adapter Universal Cutout, SITEL, Operator Adapter Universal Cutout, A dapter Universal Cutout, Universal Cutout, Cutout
--	--

References

-  [Building a more Sustainable and Electrified World | nVent](#)
-  [Building a more Sustainable and Electrified World | nVent](#)
- [User Manual](#)

[Manuals+](#), [Privacy Policy](#)

This website is an independent publication and is neither affiliated with nor endorsed by any of the trademark owners. The "Bluetooth®" word mark and logos are registered trademarks owned by Bluetooth SIG, Inc. The "Wi-Fi®" word mark and logos are registered trademarks owned by the Wi-Fi Alliance. Any use of these marks on this website does not imply any affiliation with or endorsement.