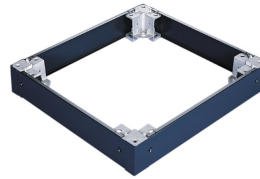



nVent HOFFMAN PPB166 Enclosure System Bases



# nVent HOFFMAN PPB166 Enclosure System Bases Owner's Manual

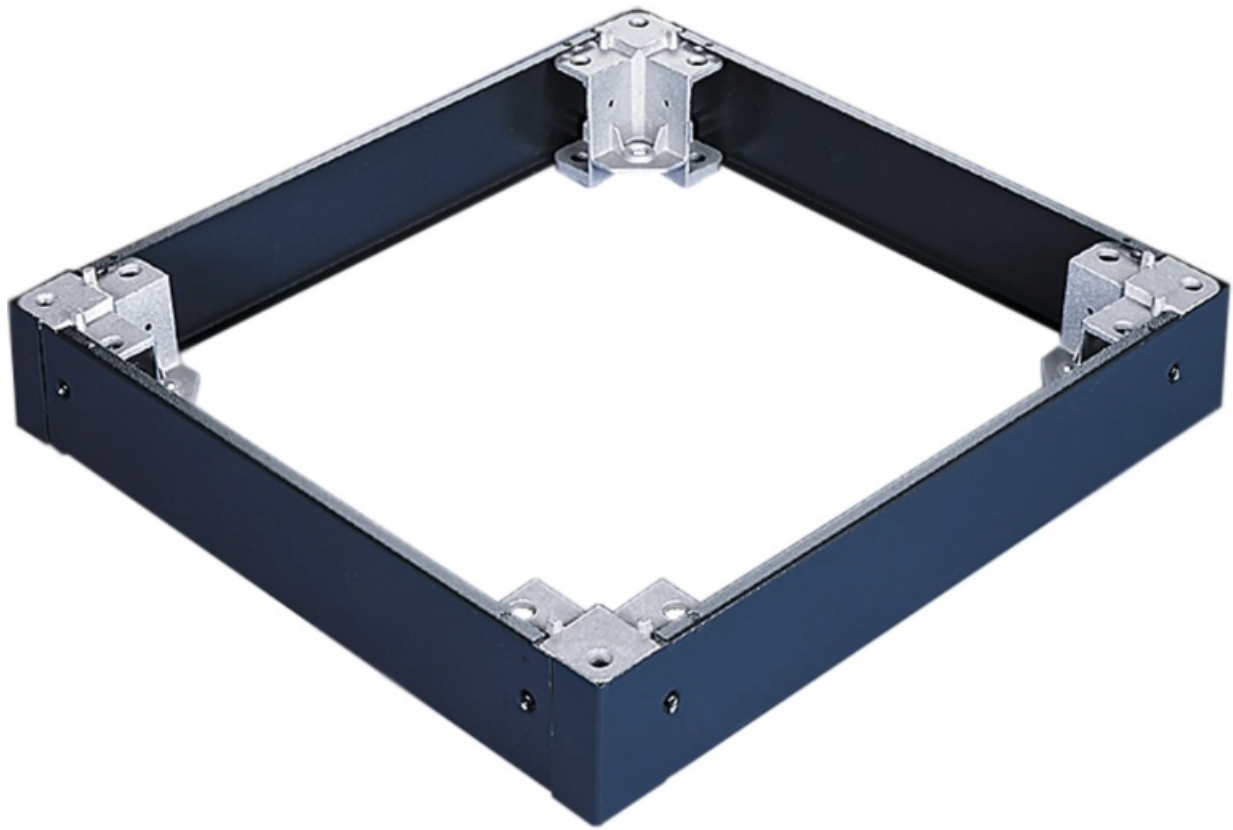
[Home](#) » [nVent HOFFMAN](#) » nVent HOFFMAN PPB166 Enclosure System Bases Owner's Manual 

## Contents

- [1 nVent HOFFMAN PPB166 Enclosure System Bases](#)
- [2 Product Usage Instructions](#)
- [3 FEATURES](#)
- [4 PRODUCT ATTRIBUTES](#)
- [5 Documents / Resources](#)
  - [5.1 References](#)
- [6 Related Posts](#)



**nVent HOFFMAN PPB166 Enclosure System Bases**



## Specifications

- **Catalog Number:** PPB166
- **Material:** Mild Steel
- **Weight:** 13.86 lb
- **Color:** Jet Black
- **Color Code:** RAL 9005
- **Finish:** Powder Coated
- **Thickness:** 16 ga

## Product Usage Instructions

### Installation

The Plinth Base is designed to be installed under an enclosure to provide space for cables to enter from below.

### Follow these steps for installation:

1. Position the four corner supports under the enclosure at the desired location.
2. Attach the access panels to the corner supports using the provided screws.
3. Ensure all components are securely fastened.

### Maintenance

- Regularly check the Plinth Base for any signs of damage or wear.
- Clean the surface as needed to maintain its appearance and functionality.

## FAQ

### **Q: What is the purpose of a Plinth Base?**

**A:** A Plinth Base provides space for cables to enter from below an enclosure.

### **Q: How can I ensure Type 12 protection when using the Plinth Base?**

**A:** Order a gland plate system along with the Plinth Base to provide Type 12 protection.

### **Q: Can I install the Plinth Base without all the necessary mounting hardware?**

**A:** It is recommended to use all provided mounting hardware for proper installation and stability of the Plinth Base.

- Plinth Bases are installed under an enclosure to provide space for cables to enter from below.
- A Plinth Base consists of four corner supports connected to four access panels.
- The corner supports are cast aluminum. The access panels attach to the corner supports with screws.
- All necessary mounting hardware is included. Order a gland plate system to provide Type 12 protection when using a Plinth Base.

## FEATURES

- All necessary mounting hardware included
- Order with a gland plate system to provide Type 12 protection when using a Plinth Base

## PRODUCT ATTRIBUTES

- **Article Number:** 97370
- **Material:** Mild Steel
- **Weight:** 13.86 lb
- **Color:** Jet Black
- **Color Code:** RAL 9005
- **Finish:** Powder Coated
- **Thickness:** 16 ga


## WARNING

- nVent products shall be installed and used only as indicated in nVent's product instruction sheets and training materials.
- Instruction sheets are available at [www.nvent.com](http://www.nvent.com) and from your nVent customer service representative.
- Improper installation, misuse, misapplication, or other failure to completely follow nVent's instructions and warnings may cause product malfunction, property damage, serious bodily injury, and death and/or void your warranty.

**Our powerful portfolio of brands:**

- [nVent.com](#) CADDY ERICO HOFFMAN RAYCHEM SCHROFF TRACER
- © 2024 nVent. All nVent marks and logos are owned or licensed by nVent Services GmbH or its affiliates.
- All other trademarks are the property of their respective owners.
- nVent reserves the right to change specifications without notice.

## Documents / Resources



[nVent HOFFMAN PPB166 Enclosure System Bases](#) [pdf] Owner's Manual  
PPB166 Enclosure System Bases, PPB166, Enclosure System Bases, System Bases, Bases

## References

- [User Manual](#)

[Manuals+](#), [Privacy Policy](#)

This website is an independent publication and is neither affiliated with nor endorsed by any of the trademark owners. The "Bluetooth®" word mark and logos are registered trademarks owned by Bluetooth SIG, Inc. The "Wi-Fi®" word mark and logos are registered trademarks owned by the Wi-Fi Alliance. Any use of these marks on this website does not imply any affiliation with or endorsement.