



nVent HOFFMAN F44WPFG Converting Closure Plate To Reducer Instructions

[Home](#) » [nVent HOFFMAN](#) » nVent HOFFMAN F44WPFG Converting Closure Plate To Reducer Instructions 

Contents

- [1 nVent HOFFMAN F44WPFG Converting Closure Plate To Reducer](#)
- [2 Product Information](#)
- [3 Product Usage Instructions](#)
- [4 Assembly Instruction](#)
- [5 Documents / Resources](#)
 - [5.1 References](#)



nVent HOFFMAN F44WPFG Converting Closure Plate To Reducer



Product Information

The product described in the user manual is a closure plate that can be converted into a reducer. The reducer is used in conjunction with a 4×4 wireway flange, a 4×4 gasket, a 6×6 wireway flange, and a 6×6 gasket.

The closure plate needs to be modified by adding a center cutout and four countersunk holes as shown in Figure 1. The reducer, 4×4 gasket, and 4×4 wireway flange should be connected together as shown in Figure 2. Additionally, the 6×6 wireway flange and 6×6 gasket should be connected to the reducer as shown in Figure 2.

Product Usage Instructions

1. Take the closure plate and add a center cutout and four countersunk holes according to the dimensions shown in Figure 1.
2. Take the reducer and align it with the 4×4 wireway flange. Attach the 4×4 gasket between the reducer and the flange.
3. Attach the 6×6 wireway flange to the other end of the reducer.
4. Place the 6×6 gasket between the 6×6 wireway flange and the reducer.
5. Ensure all connections are secure and properly aligned.

Make sure to refer to the figures mentioned in the instructions for a visual representation of how the components should be connected.

Assembly Instruction

1. Modify closure plate by adding center cutout and four countersunk holes as shown in Fig. 1.

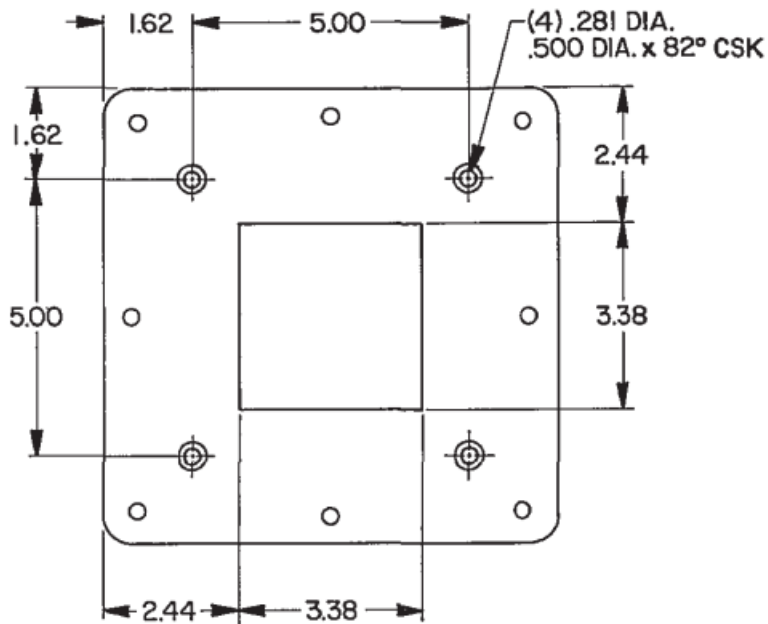


FIG. 1

2. Connect reducer and 4×4 gasket to 4×4 wireway flange as shown in Fig. 2.
3. Connect 6×6 wireway flange and 6×6 gasket to reducer as shown in Fig. 2.

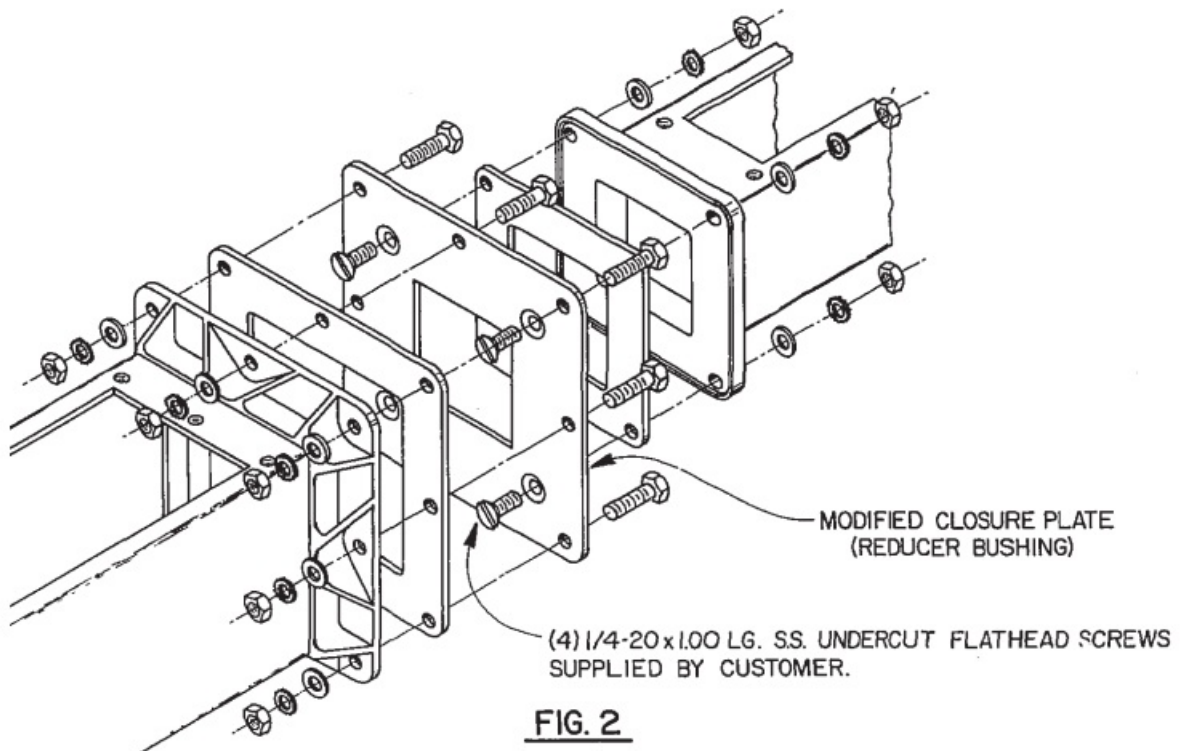
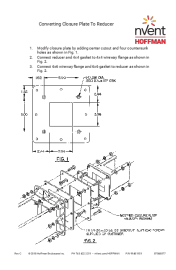


FIG. 2

© 2018 Hoffman Enclosures Inc.

- PH 763 422 2211
- nVent.com/HOFFMAN
- 87568877
- P/N 99401151

Documents / Resources

	<p>nVent HOFFMAN F44WPFG Converting Closure Plate To Reducer [pdf] Instructions Untitled, F44WPFG, F44WPFG Converting Closure Plate To Reducer, Converting Closure Plate To Reducer, Closure Plate To Reducer, Plate To Reducer, Reducer</p>
---	--

References

- [🌟 We connect and protect | nVent](#)

Manuals+.