



## nVent HOFFMAN AL31 Latch Kit Instruction Manual

[Home](#) » [nVent HOFFMAN](#) » nVent HOFFMAN AL31 Latch Kit Instruction Manual 

### Contents

- [1 nVent HOFFMAN AL31 Latch Kit](#)
- [2 Product Information](#)
- [3 Product Usage Instructions](#)
- [4 Latch Kit](#)
- [5 INSTALLATION](#)
- [6 Documents / Resources](#)
  - [6.1 References](#)
- [7 Related Posts](#)



**nVent HOFFMAN AL31 Latch Kit**



## Product Information

The Latch Kit is a set of latches designed for securing doors or ports. It includes rubber washers, lock nuts, and the necessary mounting hardware. The kit is compatible with various equipment and can be used for both internal and external applications.

## Warnings

To ensure safety, it is important to follow these warnings:

- Do not energize any circuits before checking all internal and external electrical and mechanical clearances.
- Verify that all assembled equipment functions safely and properly.

## Note

When replacing existing clamps, ensure that you use the same number of latches and position them in the same locations.

## Product Usage Instructions

1. Prepare the mounting hole as shown in the provided diagram.
2. Slide the rubber washer over the pre-assembled latch.
3. Insert the latch through the mounting hole.
4. Attach the locknut to the latch.
5. Tighten the locknut to a torque of 90 in-lbs (10 Nm).

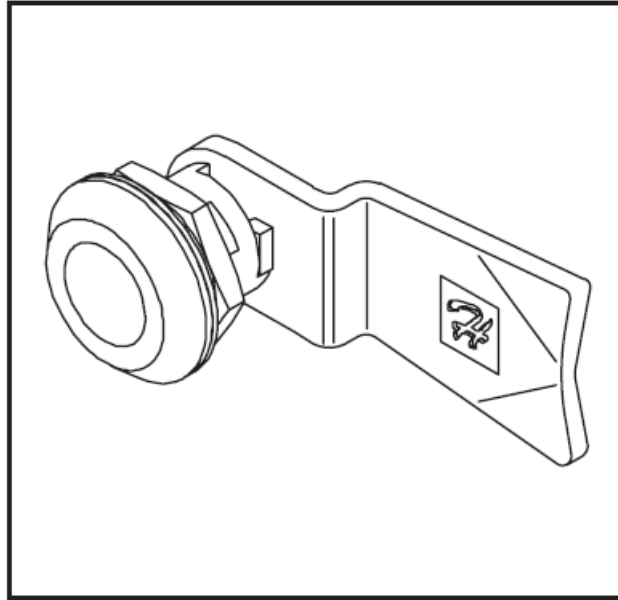
## Key Components

- Sello de goma (Rubber Washer)
- Lock Nut (Ecrou de serrure / Tuerca del candado)

- Door (Porte / Puerta)
- Required Mounting Hole (Trou de montage requis / Orificio de montaje requerido)

**Note:** This product revision is marked as Rev. C and has the part number P/N 23208001 and the serial number 87567809.

## Latch Kit



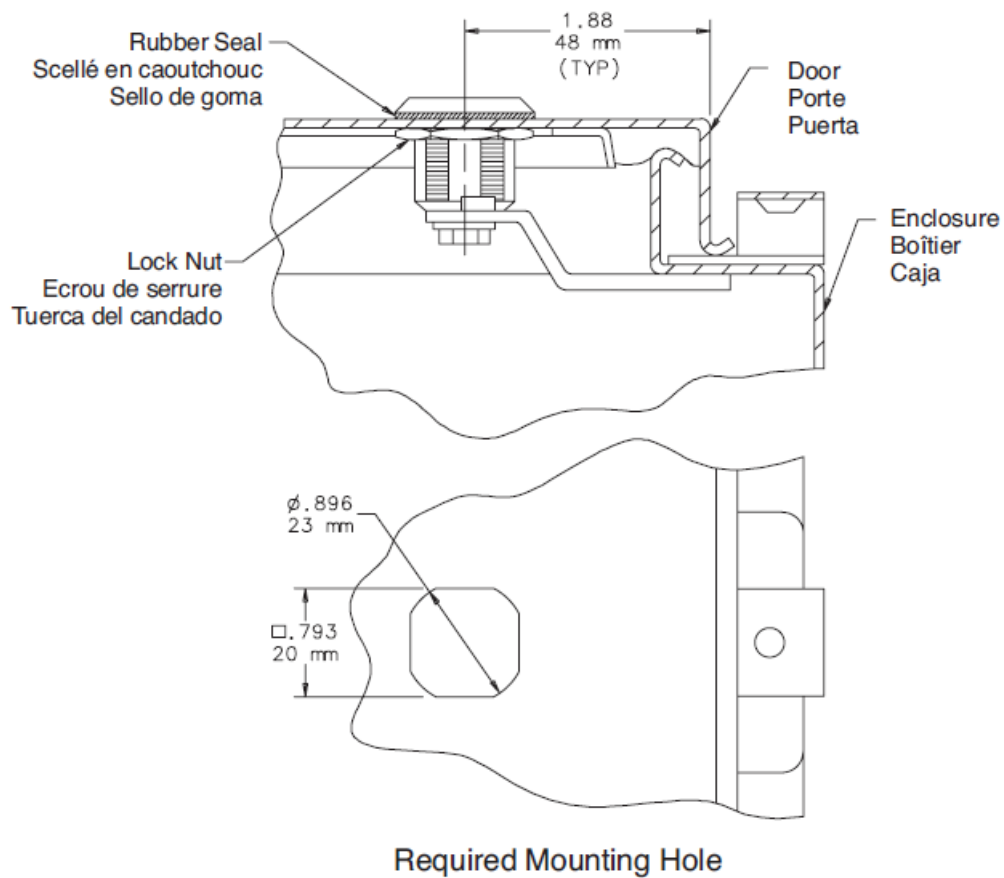
### WARNING

To avoid electric shock, do not energize any circuits before all internal and external electrical and mechanical clearances are checked to assure that all assembled equipment functions safely and properly.

**NOTE:** Replace existing clamps with the same number of latches and positioned in the same locations.

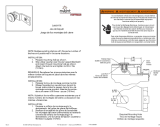
## INSTALLATION

1. Prepare mounting hole as shown.
2. Slip rubber washer over the pre-assembled latch and insert through mounting hole as shown. Attach the locknut and tighten to 90 in-lbs (10 Nm).



PH 763 422 2211 Rev. C • [nVent.com/HOFFMAN](http://nVent.com/HOFFMAN)

## Documents / Resources

|   |   |
|---|---|
|  | <p><a href="#">nVent HOFFMAN AL31 Latch Kit</a> [pdf] Instruction Manual<br/>AL31 Latch Kit, AL31, Latch Kit, Kit</p> |
|---|---|

## References

- [🌟 We connect and protect | nVent](#)