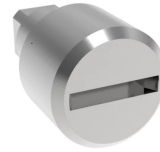


nVent HOFFMAN 47340001 Lock Inserts



nVent HOFFMAN 47340001 Lock Inserts Instruction Manual

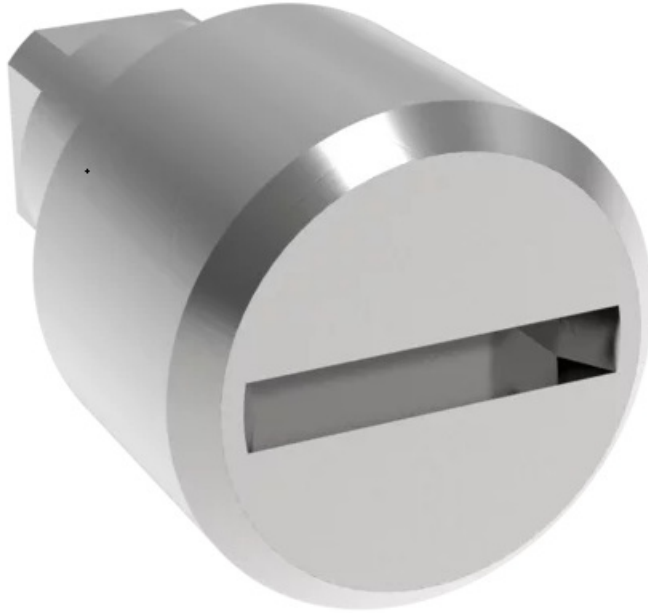
[Home](#) » [nVent HOFFMAN](#) » nVent HOFFMAN 47340001 Lock Inserts Instruction Manual 

Contents

- [1 nVent HOFFMAN 47340001 Lock Inserts](#)
- [2 Product Information](#)
- [3 Product Usage Instructions](#)
- [4 OVERVIEW](#)
- [5 PARTS](#)
- [6 INSTRUCTION](#)
- [7 Documents / Resources](#)
 - [7.1 References](#)



nVent HOFFMAN 47340001 Lock Inserts



Product Information

This product is the Inline Latch Inserts Barillet, identified by part number 87568582, Revision D.

Specifications:

- Model: Inline Latch Inserts Barillet
- Part Number: 87568582
- Revision: D
- Size: M5-0.8x10mm
- Torque: 5-10 in-lbs (0.6-1.1 Nm)

Product Usage Instructions

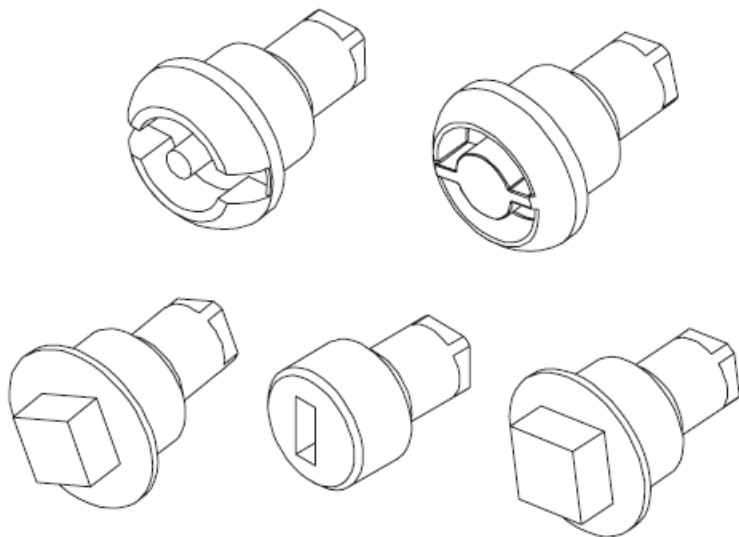
Installation:

1. Ensure the area where the latch inserts will be installed is clean and free from debris.
2. Insert the Inline Latch Inserts Barillet into the designated slot or opening.
3. Use the provided M5-0.8x10mm screws to secure the latch inserts in place.
4. Apply a torque of 5-10 in-lbs (0.6-1.1 Nm) to tighten the screws.

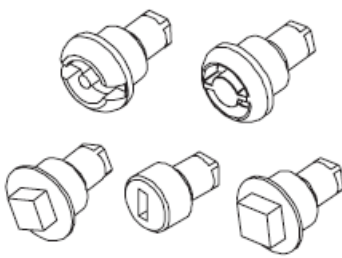


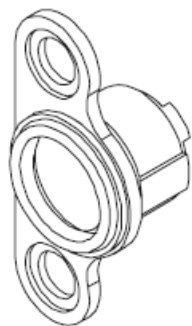
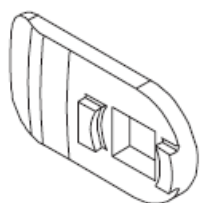
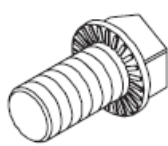
FAQ

- Q: What is the recommended torque for securing the Inline Latch Inserts Barillet?
A: The recommended torque for securing the latch inserts is 5-10 in-lbs (0.6-1.1 Nm).

OVERVIEW

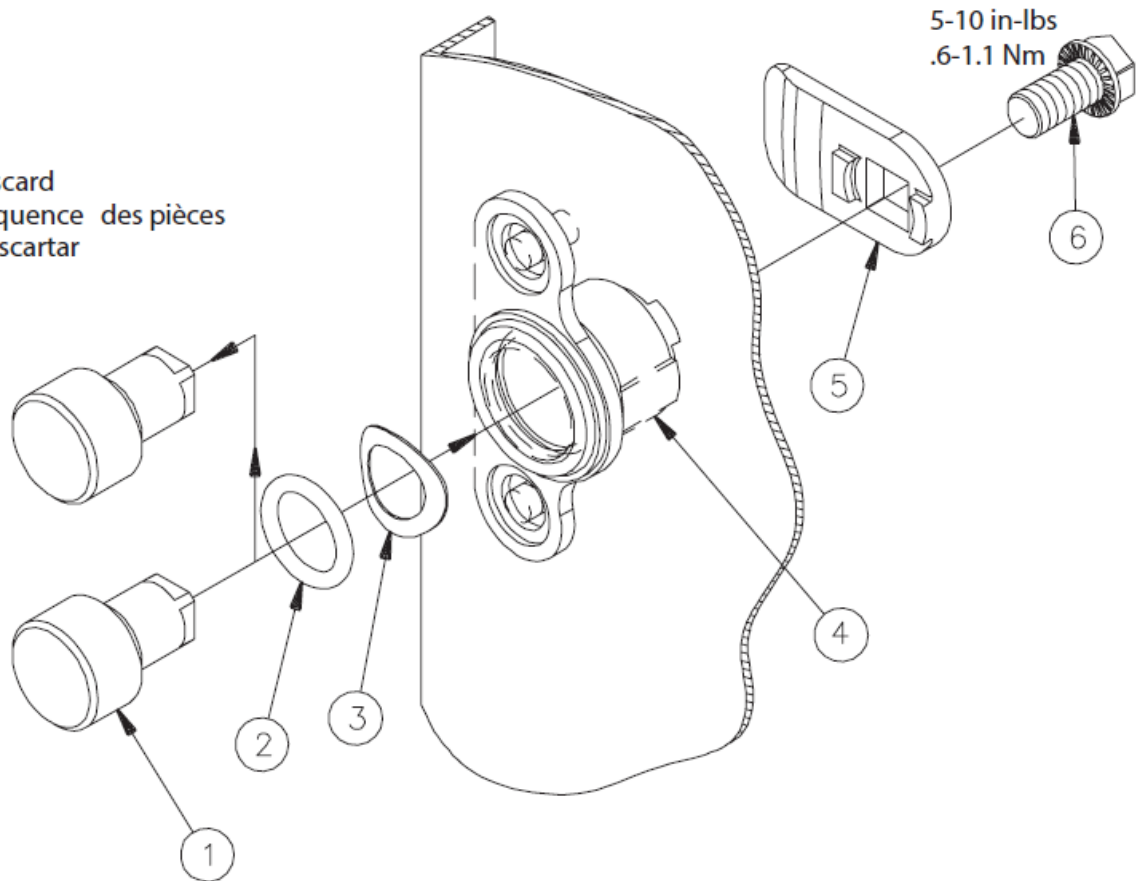


PARTS

<div>1</div> <div></div> <div>(1x)</div>	<div>2</div> <div></div>
<div>3</div> <div></div>	<div>4</div> <div></div>
<div>5</div> <div></div>	<div>6</div> <div>M5—0.8x10mm</div> <div></div> <div>5-10 in-lbs .6-1.1 Nm</div>

INSTRUCTION

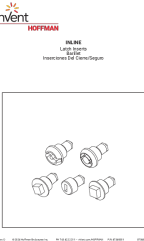
Discard
Séquence des pièces
Descartar



© 2024 Hoffman Enclosures Inc. PH 763 422 2211

nVent.com/HOFFMAN

Documents / Resources

	<p>nVent HOFFMAN 47340001 Lock Inserts [pdf] Instruction Manual 47340001 Lock Inserts, 47340001, Lock Inserts, Inserts</p>
---	--

References

- [Home | nVent HOFFMAN](#)
- [User Manual](#)

[Manuals+](#), [Privacy Policy](#)

This website is an independent publication and is neither affiliated with nor endorsed by any of the trademark owners. The "Bluetooth®" word mark and logos are registered trademarks owned by Bluetooth SIG, Inc. The "Wi-Fi®" word mark and logos are registered trademarks owned by the Wi-Fi Alliance. Any use of these marks on this website does not imply any affiliation with or endorsement.