



nVent HOFFMAN 1494C Large Handle Disconnect Switches Instruction Manual

[Home](#) » [nVent HOFFMAN](#) » nVent HOFFMAN 1494C Large Handle Disconnect Switches Instruction Manual 



OPERATOR ADAPTER ABL

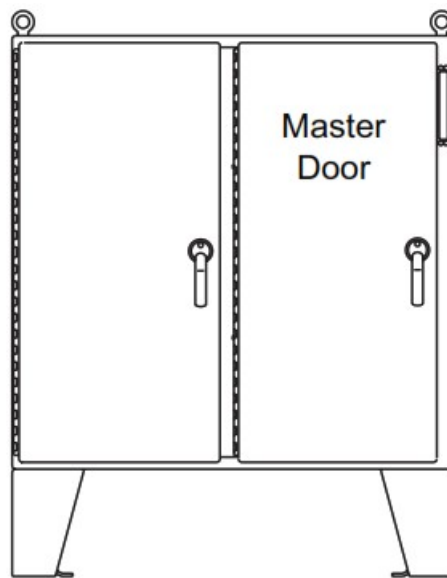
Installation Instructions for Allen-Bradley Bulletin
1494V, 1494C, 140G and 140U Large Handle Disconnect Switches

Contents

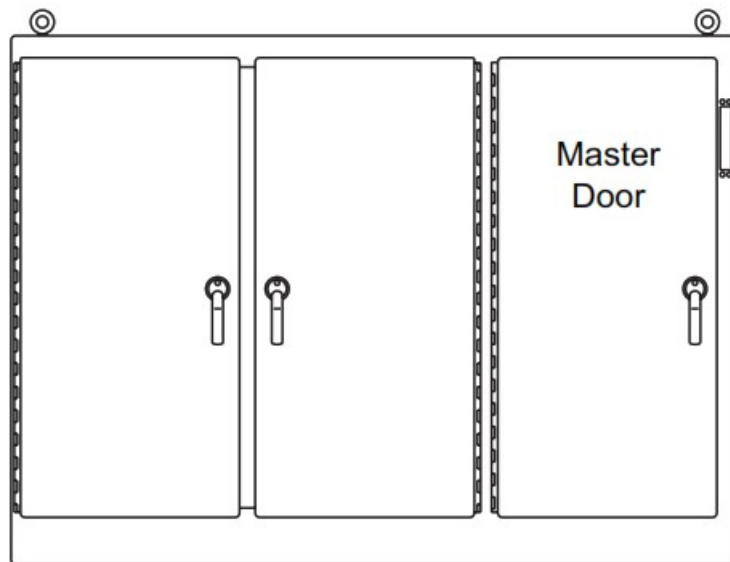
- [1 1494C Large Handle Disconnect Switches](#)
- [2 Parts List](#)
- [3 INTRODUCTION](#)
- [4 Documents / Resources](#)
 - [4.1 References](#)

1494C Large Handle Disconnect Switches

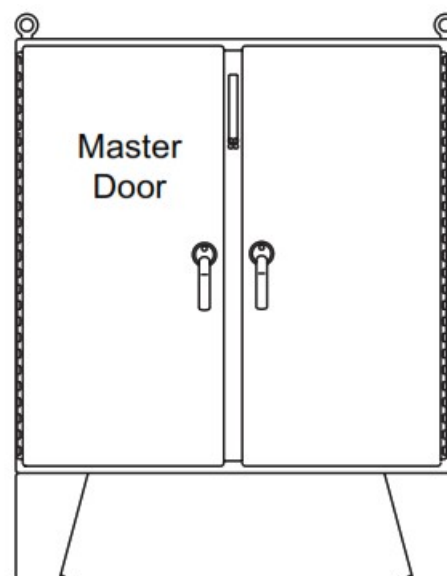
For floor-mounted enclosures with the disconnect on the right flange



For one- through six-door free-standing enclosures with the disconnect on the right flange



For floor-mounted enclosures with the disconnect on the centermost



WARNING

The functions, fits, and clearances of the installation described hereon are calculated from information supplied by the manufacturers of the equipment to be installed. Be certain to check the function, fits, and clearances of all equipment both before and after installation to assure that it operates properly and safely and meets all applicable codes, standards, and regulations.

In the event the completed installation does not function properly or fails to meet any such codes, standards, or regulations, do not attempt to make alterations or operate the equipment. Report such facts immediately to:

Customer Service Dept.
nVent Equipment Protection
2100 Hoffman Way
Minneapolis, MN 55303-1745
763.422.2211
hoffmanonline.com

Parts List

Operator Adapter, Catalog Number ABL, for Allen-Bradley Bulletins 1494V, 1494C, 140G and 140U Disconnects

| Item No. | Description | Part No. | Qty. |
|----------|---------------------------------|----------|------|
| 1 | ADAPTER PLATE, LARGE | 87932136 | 1 |
| 2 | PLATE GASKET | 89109613 | 1 |
| 3 | SCREW, 1/4-20X1/2 PAN HEAD | 99401031 | 4 |
| 4 | SLIDE ARM, ASSEMBLY | 27111002 | 1 |
| 5 | SHOULDER COLLAR, 3/4 DIAMETER | 27112001 | 1 |
| 6 | SCREW, 5/16-18X1 HEX HEAD | 99401081 | 1 |
| 7 | WASHER FLAT | 22101003 | 2 |
| 8 | LOCK WASHER, 1/4 INTERNAL TEETH | 99401300 | 2 |
| 9 | NUT, HEX 1/4-20 | 99401406 | 2 |
| 10 | DOOR CATCH | 23101002 | 1 |
| 11 | SCREW, 10-32X3/8 PAN HEAD | 99401007 | 2 |
| 12 | LOCK WASHER, #10 INTERNAL TEETH | 99401307 | 2 |
| 13 | NYLON WASHER | 23132003 | 4 |
| 14 | LOCKWASHER, 1/4 SPRING | 99401305 | 1 |
| 15 | INSTALLATION INSTRUCTIONS | 89114651 | 1 |

INTRODUCTION

This installation instruction is for the Allen-Bradley Large Handle.

Bulletin 1494V, 1494C, 140G and 140U mechanisms.

These mechanisms are for disconnect switches and circuit breakers mounted in Hoffman two door, floor-mounted with cutout on right hand flange or centerpost and one through six door, free-standing enclosures with the disconnect on the right flange.

ALLEN-BRADLEY SMALL HANDLE INSTALLATION STEPS

See Figure 1 for 1494V and 140G Variable Depth or Figure 2 for 1494C, 140G and 140U Cable Control.

Step 1

Install adapter plate (item 1) and plate gasket (item 2) on the inside of the enclosure, behind the rectangular opening provided. Gasket side with PSA should be attached to the Adapter Plate. Secure in place with four screws (item 3), and four nylon washers (item 13).

Step 2 – Install Large Handle

(1494V, 1494C, 140G and 140U) Assemble the Allen-Bradley operating mechanism and 1494F-M2 or 1494F-S2 large handle to the adapter plate which was installed in Step 1. Omit cap screw and lock washer which fit into bottom hole of Allen-Bradley operating handle.

Step 3 – Install Slide Arm and Defeater Bracket

(1494V and 140G Variable Depth) Install slide arm (item 4) through the hole in bottom of Allen-Bradley spring bracket. Put Allen-Bradley defeater bracket through slot in the end of the slide arm and mount per Allen-Bradley instructions. Place the smaller diameter end of 3/4 diameter shoulder collar (item 5) through oval slot in slide arm. Install longer cap screw (item 6) with lock washer (item 14) through shoulder collar into bottom mounting hole of Allen-Bradley operating handle and tighten. The slide arm should move up and down smoothly.

(1494C, 140G and 140U Cable Control) Put Allen-Bradley defeater bracket through slide arm (item 4) end slot and mount defeater bracket per Allen-Bradley instructions. Place the smaller diameter end of 3/4 diameter shoulder collar (item 5) through oval slot in slide arm. Install longer cap screw (item 6) with lockwasher (item 14) through shoulder collar into bottom mounting hole of Allen-Bradley operating handle and tighten. The slide arm should move up and down smoothly.

Step 4

Attach the bottom of the slide arm assembly (item 4) to the offset arm of the operator release mechanism. Use two flat washers (item 7), two lockwashers (item 8), and two hex nuts (item 9). Do not tighten until parts are adjusted. (See Step 5B).

Step 5 – The operator release mechanism is adjustable in two places

(A) Check the adjustment of the factory-installed roller bracket. The door latch should hit against the latch portion of the roller bracket when the door is closed and latched. Adjust up or down if necessary. The mechanism will then provide the necessary up- down motion required to operate the safety lock release in the Allen-Bradley operating handle.

(B) Adjust the length of the slide arm assembly with proper adjustment of the slide arm. The safety lock (in Allen-Bradley operating handle) should release just before the master door is fully latched. Lengthen slide arm if safety lock releases too soon. Shorten slide arm if safety lock releases too late.

Step 6

Attach the door catch (item 10) provided by Hoffman to the tapped spacer on the door using the bottom set of mounting holes. Use two screws (item 11) and two lockwashers (item 12). The door catch prevents the door from being opened when the Allen-Bradley operating handle is in the "ON" position.

Step 7

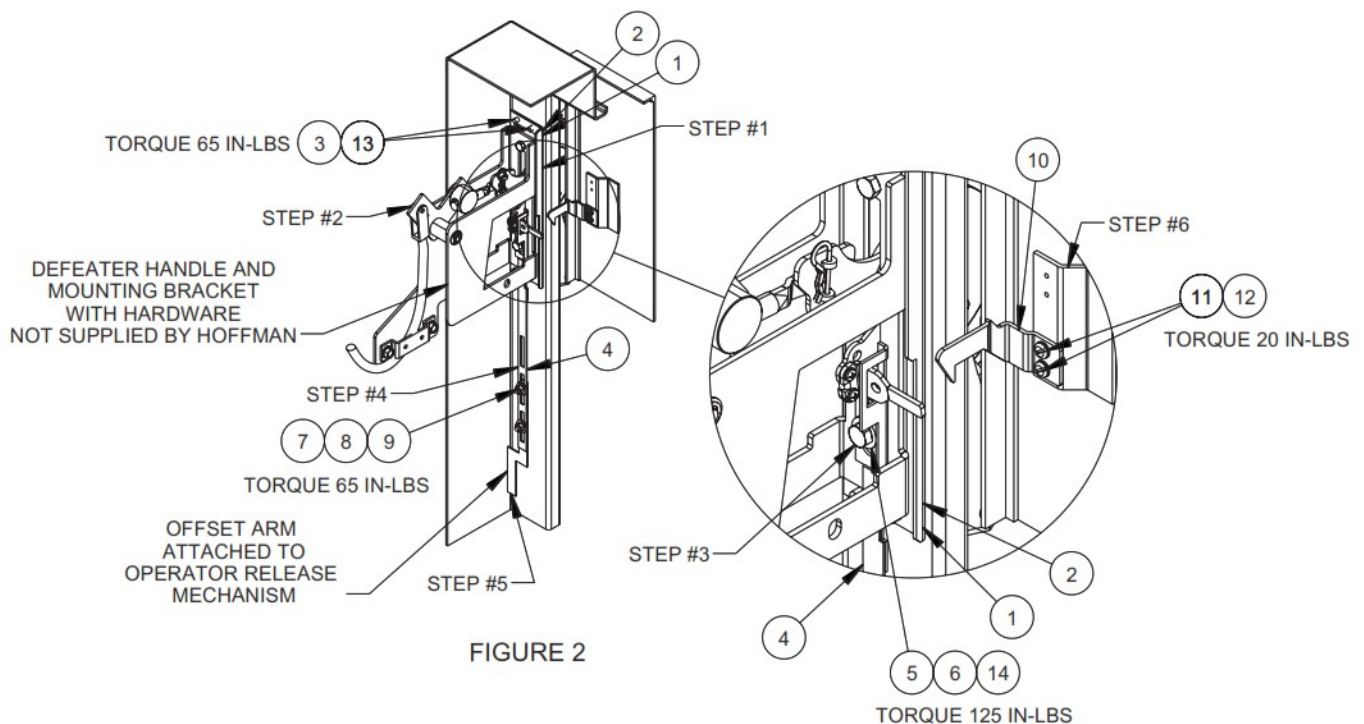
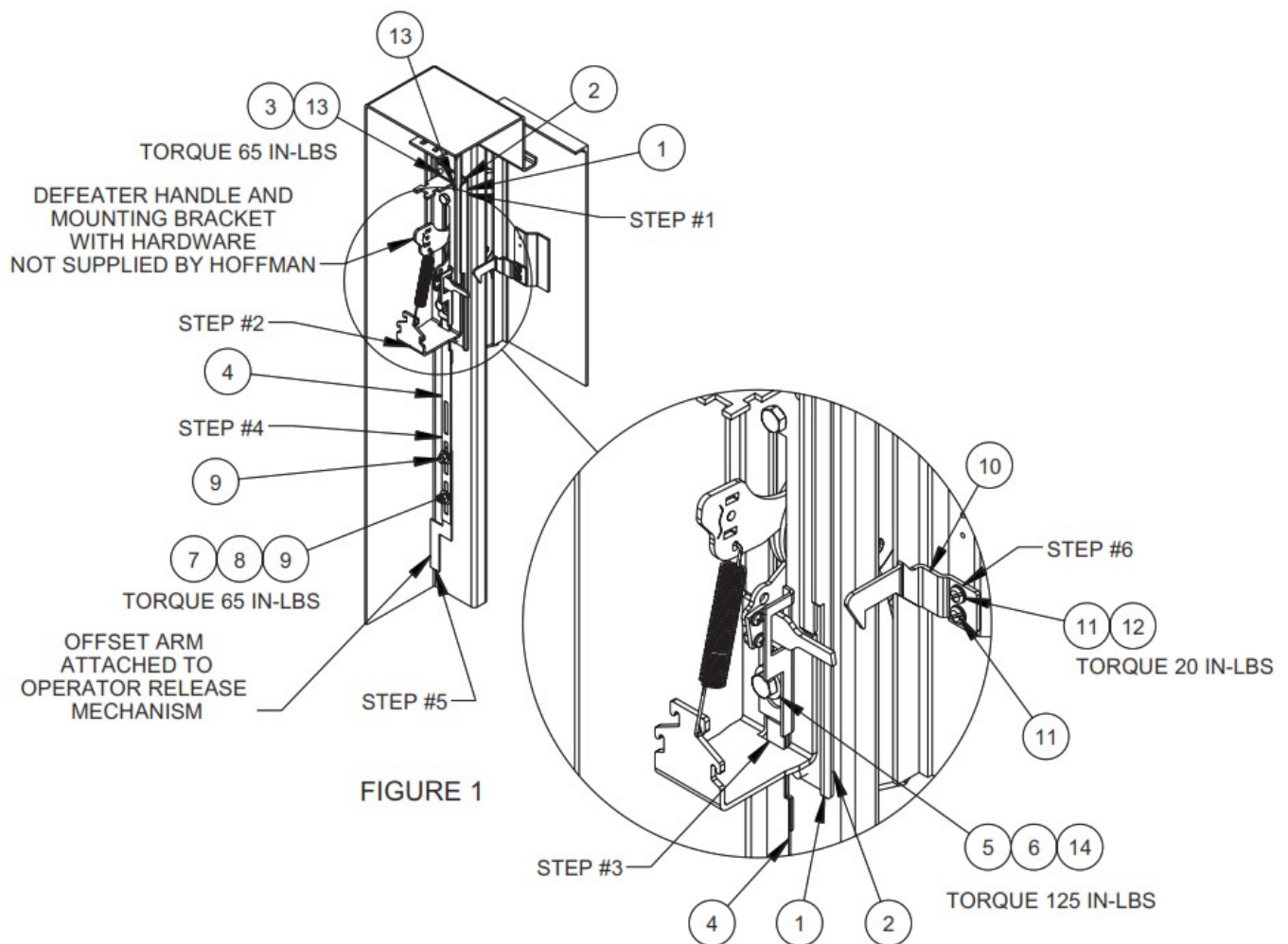
Drill and tap holes in panel PER ALLEN-BRADLEY INSTRUCTIONS.

Step 8

Install panel in enclosure.

Step 9

Mount disconnect switch or circuit breaker on panel using Allen-Bradley instructions and parts. For variable depth disconnects, find the enclosure depth dimension. See Allen-Bradley instructions to cut the connecting rod to length required and install and adjust Allen-Bradley connecting rod per Allen-Bradley instructions.



© 2018 Hoffman Enclosures Inc.
 PH 763 422 2211 · nVent.com/HOFFMAN
 89115481

| | |
|--|---|
|  | <p>nVent HOFFMAN 1494C Large Handle Disconnect Switches [pdf] Instruction Manual 1494C Large Handle Disconnect Switches, 1494C, Large Handle Disconnect Switches, Handle Disconnect Switches, Disconnect Switches, Switches, 140G, 140U, 1494V</p> |
|--|---|

References

- [!\[\]\(5ba1bc70d78f05c00988641e5e513c62_img.jpg\)
We connect and protect | nVent](#)