

## nVent CADDY NSW Flange Nut Owner's Manual

[Home](#) » [nVent Caddy](#) » nVent CADDY NSW Flange Nut Owner's Manual 

### nVent CADDY NSW Flange Nut Owner's Manual



#### Contents

- 1 FEATURES
- 2 PRODUCT ATTRIBUTES
- 3 ADDITIONAL PRODUCT DETAILS
- 4 DIAGRAMS
- 5 Documents / Resources
  - 5.1 References
- 6 Related Posts

## FEATURES

Ideal for retrofit projects, such as trapeze installations, where disassembly of the support system is not desired
Use as a stopper when installing nVent CADDY Rod Lock assemblies
Can be easily installed, removed, and repositioned at any location along the threaded rod
Ready to use out of the box and eliminates multiple pieces of standard hardware
Functions as a hex nut and flat washer combined
Washer is wide enough to work with standard strut channel profiles

## PRODUCT ATTRIBUTES

**Material:** Steel

**Finish:** Electrogalvanized

**Static Load Safety Factor:** 3:1

**Rod Size:** 1/2"

**Diameter:** 1.900"

**A:** 0.950"

**B:** 1/4"

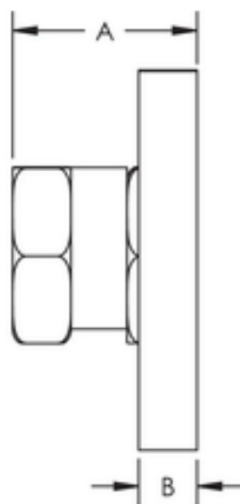
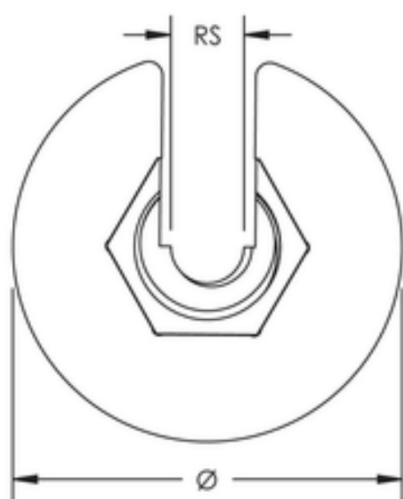
**Wrench Size:** 1"

**Static Load:** 300 lb

## ADDITIONAL PRODUCT DETAILS

For use on plain and electro zinc plated hardware only.

## DIAGRAMS



## WARNING

nVent products shall be installed and used only as indicated in nVent's product instruction sheets and training materials.

Instruction sheets are available at [www.nvent.com](http://www.nvent.com) and from your nVent customer service representative.

Improper installation, misuse, misapplication or other failure to completely follow nVent's instructions and warnings may cause product malfunction, property damage, serious bodily injury and death and/or void your warranty.

### North America

+1.800.753.9221

Option 1 – Customer Care  
Option 2 – Technical Support

### Europe

#### Netherlands:

+31 800-0200135

#### France:

+33 800 901 793

### Europe

#### Germany:

800 1890272

#### Other Countries:

+31 13 5835404

### APAC

#### Shanghai:

+ 86 21 2412 1618/19

#### Sydney:

+61 2 9751 8500

### Our powerful portfolio of brands:


[nVent.com](https://nVent.com) CADDY ERICO HOFFMAN RAYCHEM SCHROFF TRACER

© 2023 nVent. All nVent marks and logos are owned or licensed by nVent Services GmbH or its affiliates. All other trademarks are the property of their respective owners.

nVent reserves the right to change specifications without notice.



## Documents / Resources

	<p><a href="#">nVent CADDY NSW Flange Nut [pdf] Owner's Manual</a> SNSW50, SNSW Flange Nut, SNSW, Flange Nut, Nut</p>
---	---

## References

-  [Building a more Sustainable and Electrified World | nVent](#)

-  [Building a more Sustainable and Electrified World | nVent](#)
- [User Manual](#)

[Manuals+](#), [Privacy Policy](#)