



nVent CADDY RBT141 T-Series Horizontal Transition Sleeve Side Fill Owner's Manual

[Home](#) » [nVent Caddy](#) » nVent CADDY RBT141 T-Series Horizontal Transition Sleeve Side Fill Owner's Manual 



T-SERIES HORIZONTAL TRANSITION SLEEVE, SIDE FILL



The side fill horizontal T-Series sleeve has vent holes located 90 degrees from the tap hole to facilitate side fill installations when the interferences of the structure will not allow top filling. The vent holes are added to horizontal sleeves to reduce air entrapment and help ensure proper filling of the sleeve.

Contents

[1 FEATURES](#)

[2 SPECIFICATIONS](#)

[3 ADDITIONAL PRODUCT DETAILS](#)

[4 DIAGRAMS](#)

[5 WARNING](#)

[6 Documents / Resources](#)

[6.1 References](#)

[7 Related Posts](#)

FEATURES

Designed to connect horizontal reinforcing bars and angular reinforcing bars up to 45 degrees

Used to splice different diameter bars Works with saw cut, flame cut and sheared bars Can be visually inspected after installation Available with extended sleeve lengths

SPECIFICATIONS

Catalog Number	Material	Finish	100% U.S. Domestic Content	Sleeve	Rebar Size, US	Rebar Size, Canada	Diameter 1(Ø1)	Diameter 2(Ø2)	Length 1(L1)	Length 2(L2)	Length 3(L3)	Unit Weight
RBT1418101HSA	Steel	Plain	Yes	Standard Length	#18, #14	55M, 45M	3.380"	2.630"	6.500"	3"	1.030"	8.800 lb

Designed to Meet:

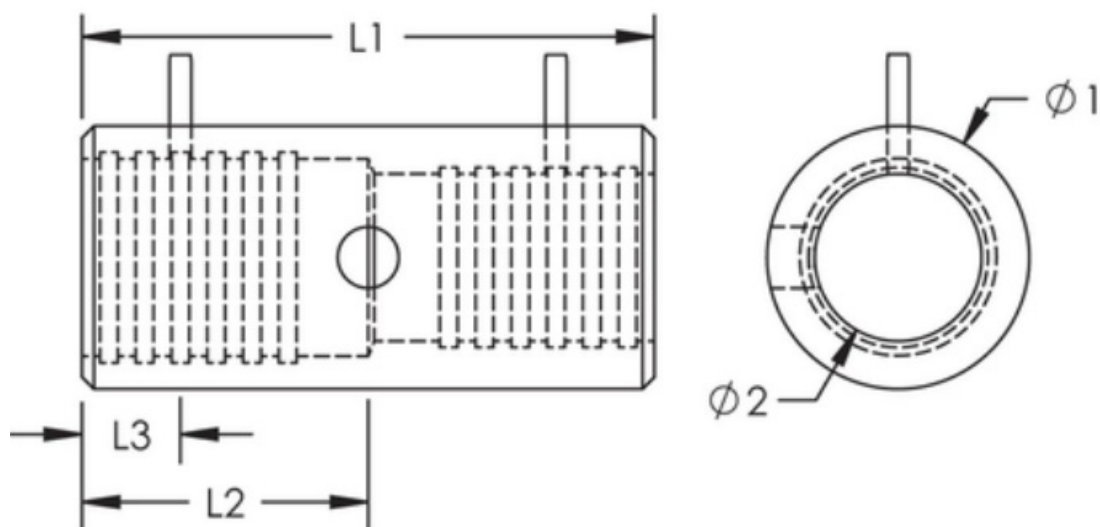
AASHTO;ABNT NBR 8548:1984;ACI 318 Type 1 (125% Specified Yield);ACI 318 Type 2 (Specified ensile);ACI 349;ACI 359;AS3600;CAN/CSA – N287.2/3/4;IBC Type 1 (125% Specified Yield);IBC Type 2 (Specified Tensile);US Army Corps of Engineers;CAN/CSA – A23.3

ADDITIONAL PRODUCT DETAILS

or to installation, please read and understand all of the detailed instructions and safety notices provided in the nVent LENTON Cadweld Rebar Splicing System Instruction Manual.

Sizes not shown may be available by special order. Contact your nVent LENTON representative for more information.

DIAGRAMS



WARNING

nVent products shall be installed and used only as indicated in nVent's product instruction sheets and training materials.

Instruction sheets are available at www.nvent.com and from your nVent customer service representative. Improper installation, misuse, misapplication or other failure to completely follow nVent's instructions and warnings may cause product malfunction, property damage, serious bodily injury and death and/or void your warranty.

North America +1.800.753.9221 Option 1 – Customer Care Option 2 – Technical Support	Europe Netherlands: +31 800-0200135 France: +33 800 901 793	Europe Germany: 800 1890272 Other Countries: +31 13 5835404	APAC Shanghai: + 86 21 2412 1618/19 Sydney: +61 2 9751 8500
---	--	--	--

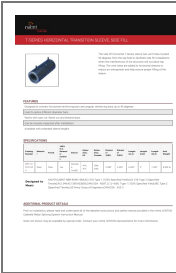


Our powerful portfolio of brands:

nVent.com CADDY ERICO HOFFMAN RAYCHEM SCHROFF
TRACER

© 2023 nVent. All nVent marks and logos are owned or licensed by nVent Services GmbH or its affiliates. All other trademarks are the property of their respective owners.

nVent reserves the right to change specifications without notice.



[nVent CADDY RBT141 T-Series Horizontal Transition Sleeve Side Fill](#) [pdf] Owner's Manual RBT141, 8101HS A, RBT141 T-Series Horizontal Transition Sleeve Side Fill, RBT141, T-Series Horizontal Transition Sleeve Side Fill, Horizontal Transition Sleeve Side Fill, Transition Sleeve Side Fill, Sleeve Side Fill, Side Fill, Fill

References

- [🌟 Building a more Sustainable and Electrified World | nVent](#)
- [🌟 Building a more Sustainable and Electrified World | nVent](#)
- [User Manual](#)