



nVent CADDY CRLS37EG 8 Inch Channel Nut With Push To Install Owner's Manual

[Home](#) » [nVent Caddy](#) » nVent CADDY CRLS37EG 8 Inch Channel Nut With Push To Install Owner's Manual 

nVent CADDY CRLS37EG 8 Inch Channel Nut With Push To Install



Contents

- [1 CATALOG NUMBER](#)
- [2 FEATURES](#)
- [3 PRODUCT ATTRIBUTES](#)
- [4 DIAGRAMS](#)
- [5 WARNING](#)
- [6 CUSTOMER SUPPORT](#)
- [7 Documents / Resources](#)
 - [7.1 References](#)
- [8 Related Posts](#)

CATALOG NUMBER

CRLS37EG



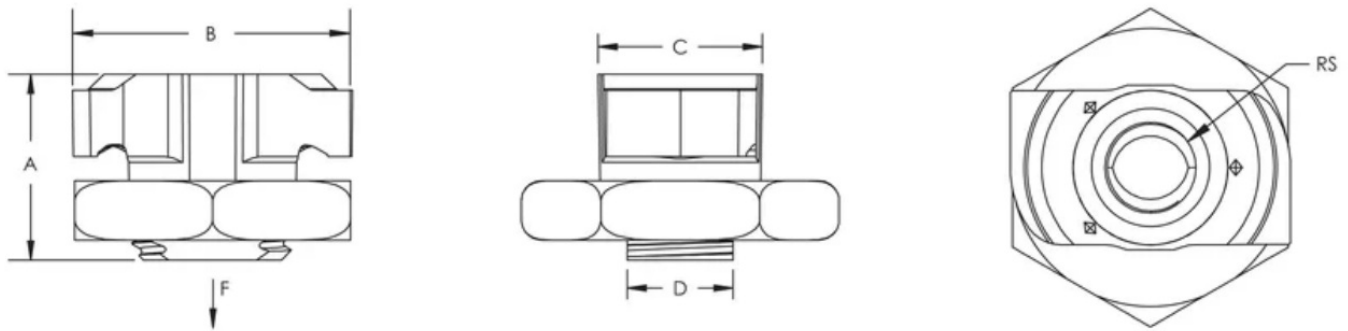
FEATURES

Provides fast universal attachment of threaded rod and hardware to standard strut profiles
Can be used to prefabricate assemblies which can be quickly pushed onto previously installed threaded rods
Works with slightly damaged threads and minor burrs on the threaded rod

PRODUCT ATTRIBUTES

- **Material:** Cast Iron
- **Finish:** Electrogalvanized
- **Rod Size (RS):** 3/8"
- **A:** 0.91"
- **B:** 1.4"
- **C:** 0.77"
- **D:** 0.53"
- **Static Load (F):** 750lb

DIAGRAMS



WARNING

nVent products shall be installed and used only as indicated in nVent's product instruction sheets and training materials.

Instruction sheets are available at www.nvent.com and from your nVent customer service representative. Improper installation, misuse, misapplication or other failure to completely follow nVent's instructions and warnings may cause product malfunction, property damage, serious bodily injury and death and/or void your warranty.

CUSTOMER SUPPORT

North America

+1.800.753.9221

Option 1 – Customer Care

Option 2 – Technical Support

TRACER

nVent.com

Our powerful portfolio of brands:

nVent.com CADDY ERICO HOFFMAN RAYCHEM SCHROFF

© 2024 nVent. All nVent marks and logos are owned or licensed by nVent Services GmbH or its affiliates. All other trademarks are the property of their respective owners.



nVent reserves the right to change specifications without notice.



Documents / Resources

	<p>nVent CADDY CRLS37EG 8 Inch Channel Nut With Push To Install [pdf] Owner's Manual CRLS37EG 8 Inch Channel Nut With Push To Install, CRLS37EG, 8 Inch Channel Nut With Push To Install, Nut With Push To Install, Push To Install</p>
--	---

References

-  [Building a more Sustainable and Electrified World | nVent](#)
-  [Building a more Sustainable and Electrified World | nVent](#)
- [User Manual](#)

Manuals+, Privacy Policy

This website is an independent publication and is neither affiliated with nor endorsed by any of the trademark owners. The "Bluetooth®" word mark and logos are registered trademarks owned by Bluetooth SIG, Inc. The "Wi-Fi®" word mark and logos are registered trademarks owned by the Wi-Fi Alliance. Any use of these marks on this website does not imply any affiliation with or endorsement.