



nVent CADDY B18 Series Combination Box Conduit Hanger Instructions

[Home](#) » [nVent Caddy](#) » nVent CADDY B18 Series Combination Box Conduit Hanger Instructions 

Contents

- [1 nVent CADDY B18 Series Combination Box Conduit Hanger](#)
- [2 Product Information](#)
- [3 Product Usage Instructions](#)
- [4 Sizing Chart](#)
- [5 SAFETY INSTRUCTIONS](#)
- [6 Assembly Instruction](#)
- [7 Installation attachment](#)
- [8 Additional B18 series applications](#)
- [9 TECHNICAL SUPPORT](#)
- [10 Documents / Resources](#)
 - [10.1 References](#)
- [11 Related Posts](#)



nVent CADDY B18 Series Combination Box Conduit Hanger



Product Information

- The product is a conduit and cable installation attachment. It is available in various sizes and configurations, as indicated by the part numbers and figures mentioned in the user manual. The product is designed for use with MC/AC cables and various conduit sizes.
- The product is made of durable materials, including plain or threaded rods, flanges, and studs. It can be used for single and multiple runs of conduit, and additional conduit clips can be ordered separately.
- It is important to note that the product should only be used as indicated in the user manual and training materials provided by nVent. Failure to follow the instructions and warnings may result in product malfunction, property damage, bodily injury, and voiding of the warranty.

Product Usage Instructions

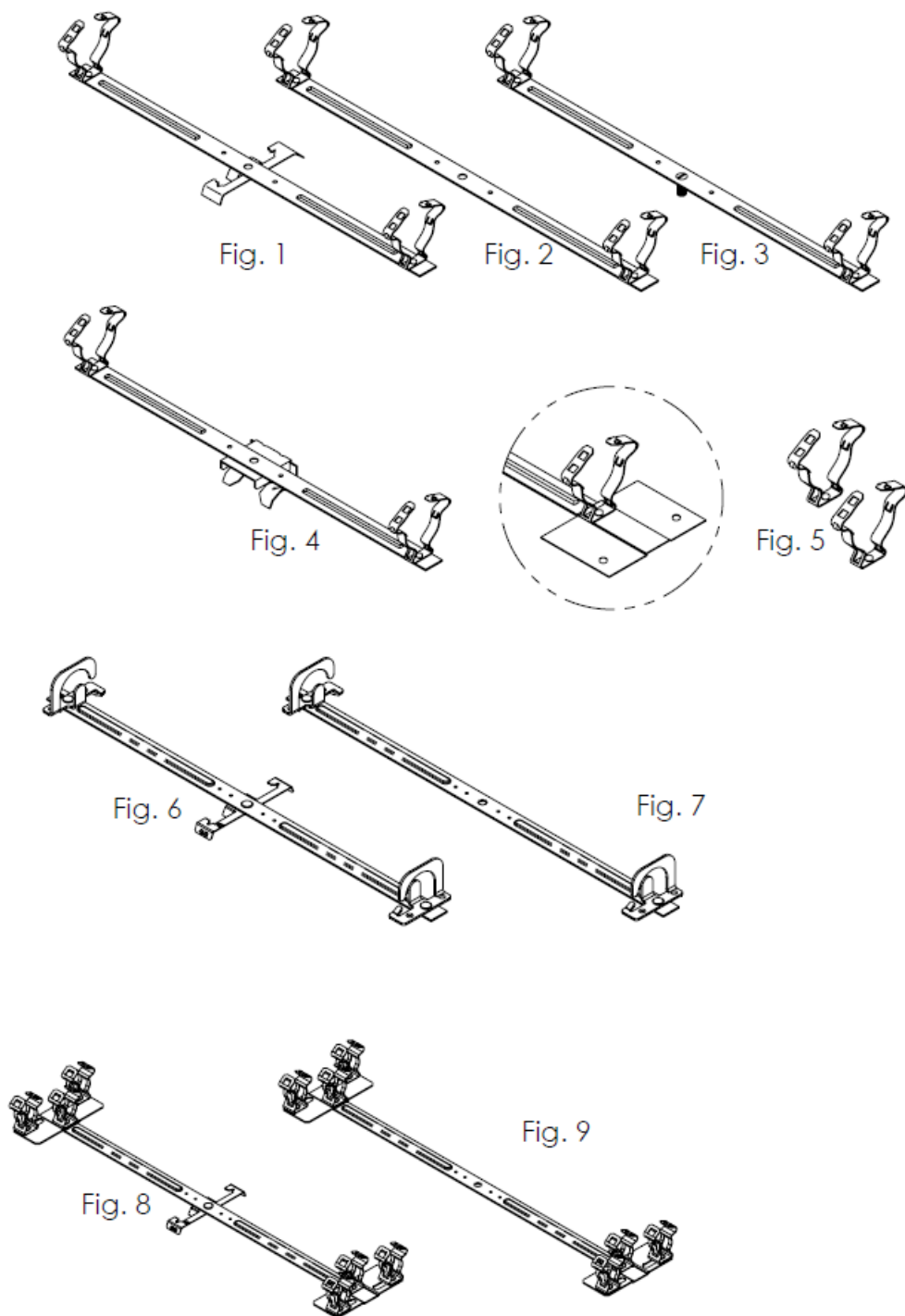
1. Consult local authority to determine if a dedicated drop wire or rod is required for installation.
2. Ensure the product is suitable for single or multiple runs of conduit. If using for a single run, adjust or remove any extra legs as needed.
3. When mounting the box to the B18 Bar using screws, such as nVent CADDY SMS8, make sure to use two screws.
4. If supporting the nVent CADDY B18 series with a threaded rod through both the B18 and the box, single support is sufficient. Additional screws are not necessary.
5. Ensure that all governing codes are followed during installation.
6. Evaluate the integrity of structures to which the product will be attached, ensuring they can safely accept the loads imposed. Consult a qualified engineer if necessary.
7. Use appropriate industry-standard hardware for installation.

Please note that the load ratings provided are for static conditions and do not account for dynamic loading such as wind, water, or seismic loads, unless otherwise specified.

It is the customer's responsibility to ensure proper installation and usage of the product, following all instructions and guidelines provided by nVent. Failure to do so may result in product failure and potential safety hazards.

Sizing Chart

Sizing Chart			
Global Part Number	Fig.	Conduit/Cable	Installation Attachment
6MB18	1	MC/AC	#12 Wire – 1/4" [6] Plain or Threaded Rod 1/8" [3] – 3/8" [9] Flange.
812MB18	1	1/2" [13] – 3/4" [19]	
16MB18	1	3/4" [19] – 1" [25]	
MCS50B18	6	MC/AC	
MCS100B18	6	MC/AC	
6M3B18CO	8	MC/AC	
6MB186	1	MC/AC	5/16" [8] – 3/8" [9] Plain or Threaded Rod 3/8" [9] – 7/16" [11] Flange
812MB186	1	1/2" [13] – 3/4" [19]	
16MB186	1	3/4" [19] – 1" [25]	
812MB188Z	1	1/2" [13] – 3/4" [19]	1/2" [13] and 5/8" [16] Threaded Rod
6MB1824	4	MC/AC	1/8" [3] – 1/4" [6] Flange
812MB1824	4	1/2" [13] – 3/4" [19]	
16MB1824	4	3/4" [19] – 1" [25]	
6MB1858	4	MC/AC	5/16" [8] – 1/2" [13] Flange
812MB1858	4	1/2" [13] – 3/4" [19]	
16MB1858	4	3/4" [19] – 1" [25]	
812MB18912	4	1/2" [13]- 3/4" [19]	9/16" [14] – 3/4" [19] Flange
6MB18A	2	MC/AC	1/4" [6] Center Hole for Screw or Threaded Rod
812MB18A	2	1/2" [13] – 3/4" [19]	
16MB18A	2	3/4" [19] – 1" [25]	
MCS50B18A	7	MC/AC	
6M3B18ACO	9	MC/AC	
812MB18S	3	1/2" [13] – 3/4" [19]	1/4-20 x 5/8" [16] stud.
*(XXX)CO	5	Factory riveted assembly for multiple conduit clips, mounting plate and oneclip, factory riveted. Additional conduit clips ordered seperately.	



To order with B18CO, add the suffix “CO” to the above part number. Additional conduit clips with thread impression use the 4I extension. (EX. 812M4I).

Note:

1. May require a dedicated drop wire/rod – consult the local authority.
2. Product intended for single and multiple runs of conduit. For single runs, the extra leg may be bent or removed if needed.
3. When mounting the box to B18 Bar and using screws, such as nVent CADDY SMS8, two screws are required. When supporting the nVent CADDY B18 series with a threaded rod going through both the B18 and the box, this single support is appropriate. Additional screws are not necessary.

SAFETY INSTRUCTIONS

Warning:

1. nVent products shall be installed and used only as indicated in nVent product instruction sheets and training materials. Instruction sheets are available at www.nVent.com and from your nVent customer service representative.
2. nVent products must never be used for a purpose other than the purpose for which they were designed or in a manner that exceeds specified load ratings.
3. All instructions must be completely followed to ensure proper and safe installation and performance.
4. Improper installation, misuse, misapplication, or another failure to completely follow nVent's instructions and warnings may cause product malfunction, property damage, serious bodily injury, and/or death, and void your warranty.
5. Products that are manufactured using spring steel components shall be used only in a non-corrosive indoor environment.
6. All pipe supports, hangers, intermediate components, and structural attachments must ONLY be used as described herein and are NEVER to be used for any other purpose.

NOTE:

All load ratings are for static conditions and do not account for dynamic loading such as wind, water or seismic loads, unless otherwise noted.

The customer is responsible for:

- Conformance to all governing codes.
- The integrity of structures to which the products are attached, including their capability of safely accepting the loads imposed, as evaluated by a qualified engineer.
- Using appropriate industry-standard hardware as noted above.

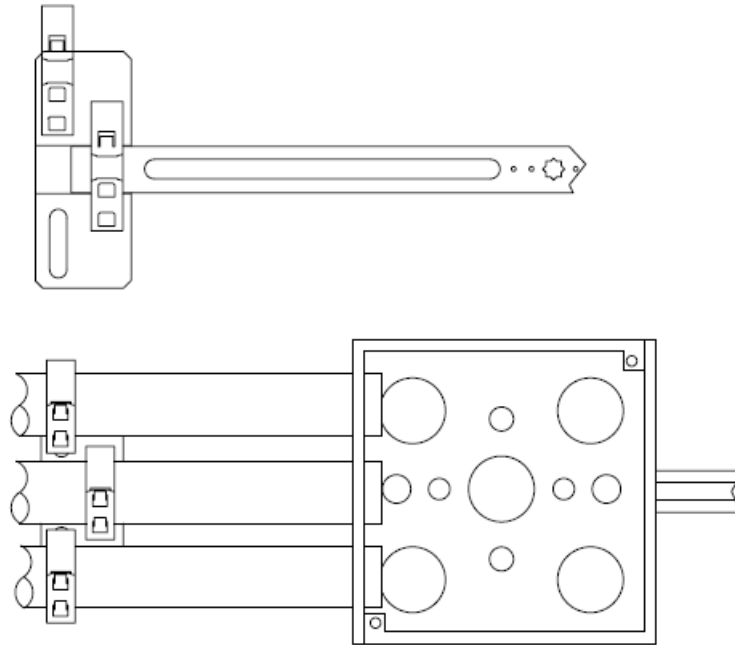
SAFETY INSTRUCTIONS:

- All governing codes and regulations and those required by the job site must be observed.
- Always use appropriate safety equipment such as eye protection, hard hat, and gloves as appropriate to the application.

nVent, nVent CADDY, nVent ERICO Cadweld, nVent ERICO Crittec, nVent ERICO, nVent ERIFLEX, and nVent LENTON are owned by nVent or its global affiliates. All other trademarks are the property of their respective owners. nVent reserves the right to change specifications without prior notice.

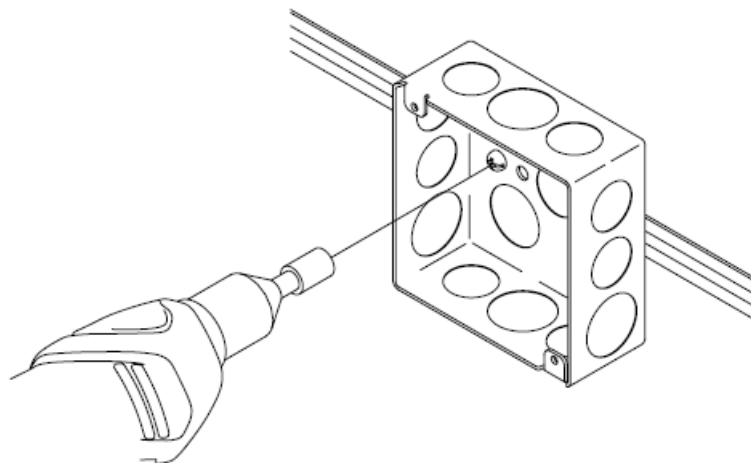
Assembly Instruction**Multiple conduit/cable assembly**

- To add additional conduit clips, position the additional clip over the slot on the B18CO. Secure with screw part number S3575BP50 (1/4-20 x 3/8" [10] round head).
- Conduit clips can slide within the slots to position them with the knockouts in the electrical box.



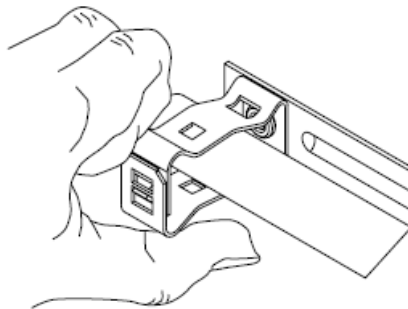
Attaching B18 series assembly to box

Attach the box with two self-tapping screws (SMS8) using the mounting holes on B18.

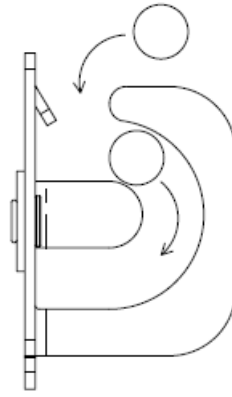


Attaching cable/conduit to B18 series assembly

- For conduit/cable installation into 6M, 812M and 16M clips.
- After the conduit/cable is installed into the box, snap clips are closed around the conduit/cable.



- For cable installation into MCS50 and MCS100.
- Insert cables into the opening as shown then slide cables around the “U”.
- MCS50 holds approximately 4 cables (0.430 [10.92] through 0.560 [14.22])
- MCS100 holds approximately 8 cables.



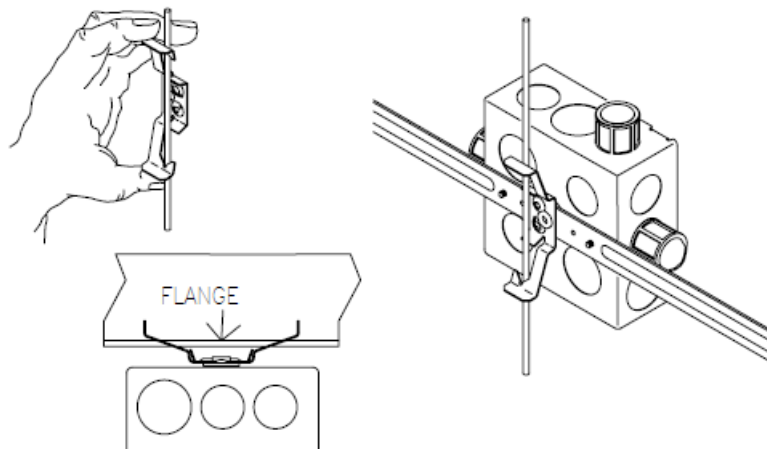
Installation attachment

Drop wire or flange (see sizing chart)

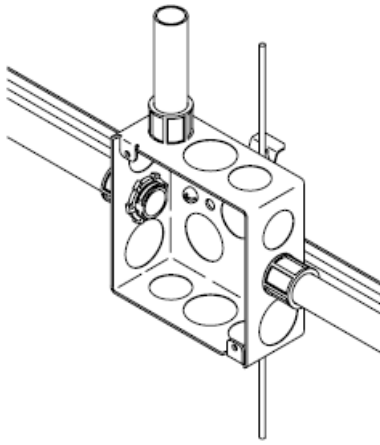
Part Number

- 6MB18
- 812MB18
- 16NB18
- MCS50B18
- MCS100B18
- 6M3B18CO
- 6MB186
- 812MB186
- 16MB186
- 812MB188Z

1. Squeeze the fastener and connect the top edge over the wire, rod, or onto the flange edge. Twist into place and squeeze.



2. Install conduit/cable in box.

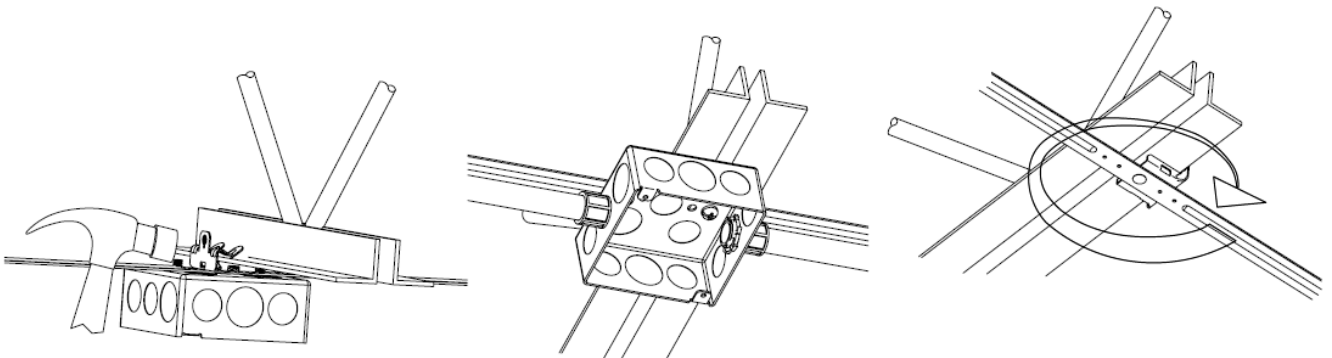


Bottom mount flange (see sizing chart)

Part Number

- 6MB1824
- 812MB1824
- 16MB1824
- 6MB1824
- 812MB1858
- 16MB1858
- 812MB18912

1. With Hammer, tap clamp onto the flange.
2. Install conduit/cable in the box.
3. Single swivel rotates 360

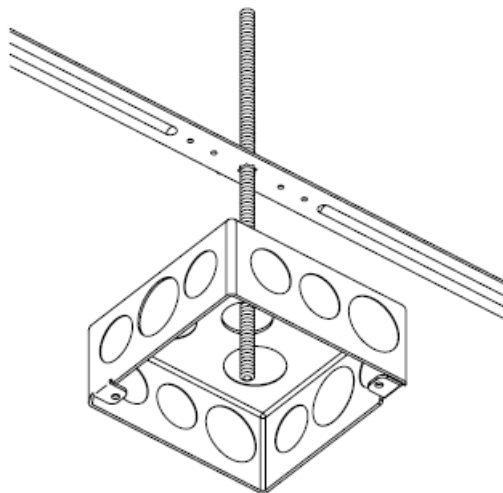


Screw or threaded rod (see sizing chart)

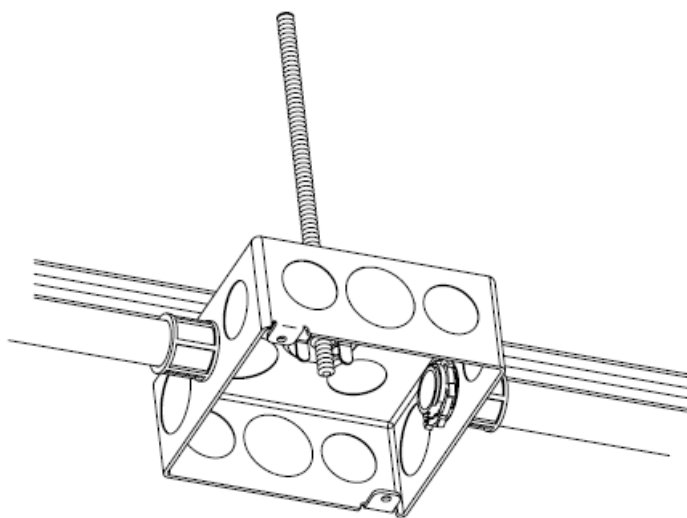
Part Number

- 6MB18A
- 812MB18A
- 16MB18A
- MCS50B18A
- 6M3B18ACO
- 812MB18S

1. Insert a threaded rod or screw through the center hole of the box and B18 series hanger as shown.



2. Install conduit/cable into the box.



- Threaded rod needs a nut and washer placed against the box and B18 series hanger to secure them.
- When a screw or stud is used, a nut is only needed on the side opposite of the screw head to secure the assembly.

Additional B18 series applications

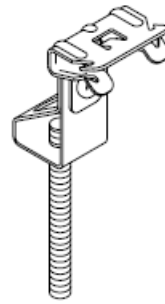
Sizing Chart		
Part Number	Fig.	Description
4WN	1	1/4" [6] Threaded rod to 1/8" [3] through 1/4" [6] flange
4TI24	2	1/4" [6] Threaded rod to 5/16" [8] through 1/4" [6] flange
4TI58	2	1/4" [6] Threaded rod to 5/16" [8] through 1/2" [13] flange
4TI912	2	1/4" [6] Threaded rod to 9/16" [14] through 3/4" [19] flange
6TI24	2	3/8" [10] Threaded rod to 5/16" [8] through 1/4" [6] flange
6TI58	2	3/8" [10] Threaded rod to 5/16" [8] through 1/2" [13] flange
6TI912	2	3/8" [10] Threaded rod to 9/16" [14] through 3/4" [19] flange

Fig. 1



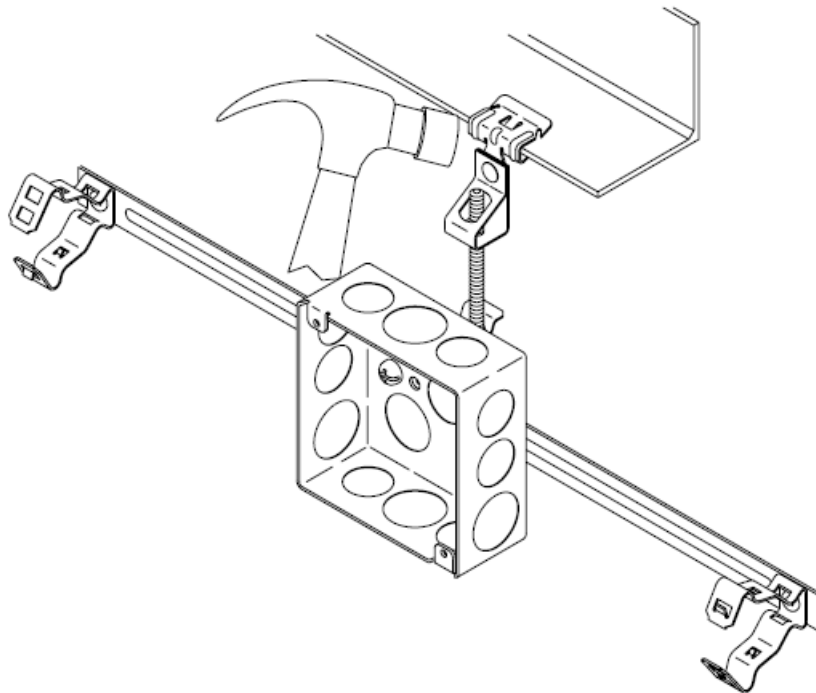
4WN

Fig. 2

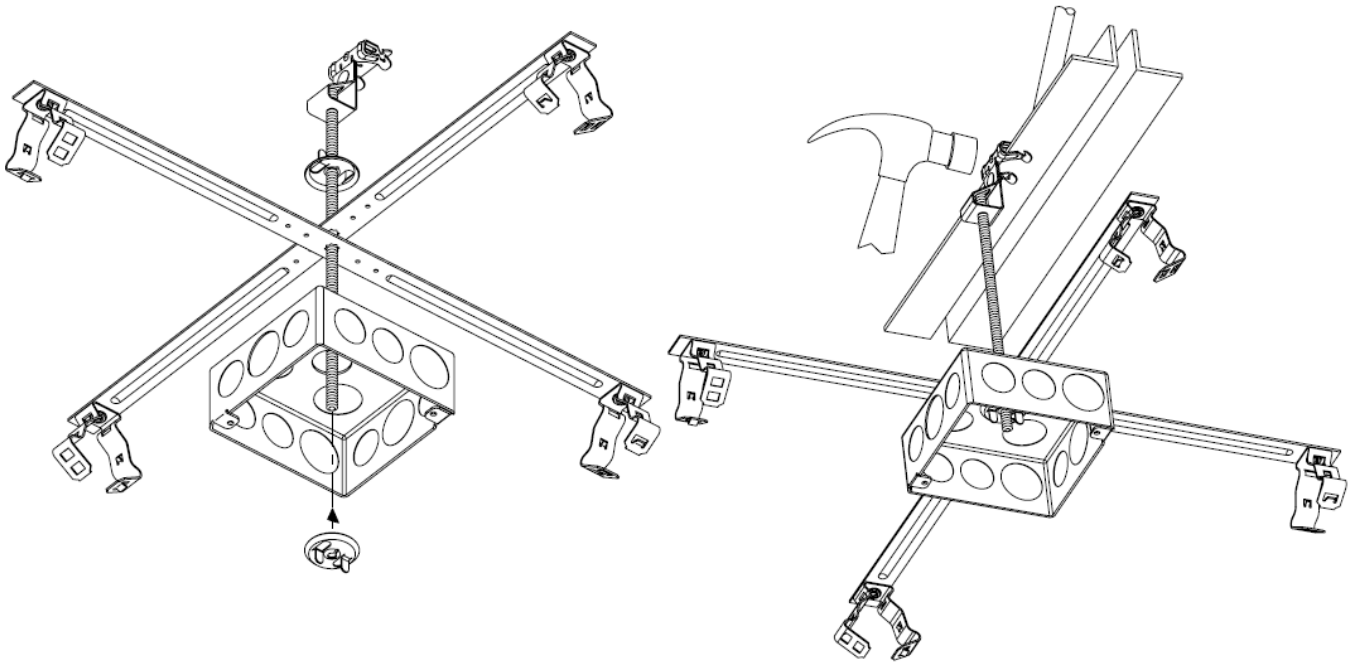


Threaded Rod Hangers

Assemble as shown using B18 series hangers with additional products listed in sizing chart on this page.



This installation allows either 2 or 4 runs of conduit to box. Determine your needs and push either 1 or 2 plain center hole B18 assemblies onto rod.



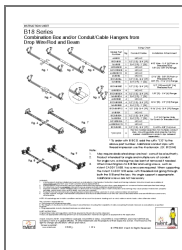
nVent, nVent CADDY, nVent ERICO Cadweld, nVent ERICO Critec, nVent ERICO, nVent ERIFLEX, and nVent LENTON are owned by nVent or its global affiliates. All other trademarks are the property of their respective owners. nVent reserves the right to change specifications without prior notice.

TECHNICAL SUPPORT

- www.nVent.com.

© 1998-2021 nVent All Rights Reserved.

Documents / Resources



[nVent CADDY B18 Series Combination Box Conduit Hanger \[pdf\] Instructions](#)

6MB18, 812MB18, 16MB18, MCS50B18, MCS100B18, 6M3B18CO, 6MB186, 812MB186, 16MB186, 812MB188Z, 6MB1824, 812MB1824, 16MB1824, 6MB1858, 812MB1858, 16MB1858, 812MB18912, 6MB18A, 812MB18A, 16MB18A, MCS50B18A, 6M3B18ACO, 812MB18S, B18 Series, B18 Series Combination Box Conduit Hanger, Combination Box Conduit Hanger, Box Conduit Hanger, Conduit Hanger, Hanger

References

- [🌟 The Future of Connection and Protection | nVent](#)