

NUX
NUX B-3RC
2.4GHZ
Wireless
Microphone
System



NUX B-3RC 2.4GHZ Wireless Microphone System Owner's Manual

[Home](#) » [NUX](#) » NUX B-3RC 2.4GHZ Wireless Microphone System Owner's Manual 

Contents

- [1 NUX B-3RC 2.4GHZ Wireless Microphone System](#)
- [2 Product Usage Instructions](#)
- [3 FAQ](#)
- [4 FCC Statement](#)
- [5 System Overview](#)
- [6 Features](#)
- [7 How to Operate](#)
- [8 Charge](#)
- [9 Application Scenarios](#)
- [10 Specifications](#)
- [11 Documents / Resources](#)
 - [11.1 References](#)

NUX

NUX B-3RC 2.4GHZ Wireless Microphone System



Specifications

- Product Name: 2.4GHz Wireless Microphone System
- Manufacturer: Cherub Technology Co., Ltd.
- Origin: Made in China
- Audio Quality: 24bit Hi-Resolution
- Frequency: 2.4GHz
- Latency: Ultra-low

Product Usage Instructions

Overview

The 2.4GHz Wireless Microphone System by Cherub Technology Co., Ltd. offers high-quality audio transmission with ultra-low latency, making it ideal for various applications.

Features

- Easy to use
- 2.4GHz wireless technology
- 24bit Hi-Resolution audio quality
- Ultra-low latency

Setup

1. Ensure the microphone and receiver are both powered on.
2. Pair the microphone with the receiver following the manufacturer's instructions.
3. Adjust volume levels as needed on both the microphone and receiver.

Operation

Once set up, speak or sing into the microphone within the recommended range for optimal performance. Monitor audio levels using the receiver's indicators and adjust settings as necessary.

Maintenance

Regularly check and replace batteries in the microphone to ensure uninterrupted operation. Keep the system clean and free from dust or debris that may affect performance.

FAQ

- **Q: Can I use multiple microphones with this system?**
 - A: Yes, you can use multiple microphones with the system, but ensure they are compatible and follow the pairing instructions for each additional microphone.
- **Q: How far is the effective range of the wireless system?**
 - A: The effective range may vary depending on environmental factors, but typically it can reach up to 100 feet indoors and 200 feet outdoors in optimal conditions.

WARNING

To reduce the risk of fire or electric shock, do not expose this appliance to rain or moisture.

FCC Statement

CAUTION

This device complies with part 15 of the FCC Rules. Operation is subject to the following two conditions:

1. this device may not cause harmful interference, and
2. this device must accept any interference received, including interference that may cause undesired operation.

Any changes or modifications not expressly approved by the party responsible for compliance could void the user's authority to operate the equipment.

NOTE: This equipment has been tested and found to comply with the limits for a Class B digital device, pursuant to Part 15 of the FCC Rules. These limits are designed to provide reasonable protection against harmful interference in a residential installation. This equipment generates, uses and can radiate radio frequency energy and, if not installed and used in accordance with the instructions, may cause harmful interference to radio communications. However, there is no guarantee that interference will not occur in a particular installation. If this equipment does cause harmful interference to radio or television reception, which can be determined by turning the equipment off and on, the user is encouraged to try to correct the interference by one or more of the following measures:

- Reorient or relocate the receiving antenna.
- Increase the separation between the equipment and receiver.
- Connect the equipment into an outlet on a circuit different from that to which the receiver is connected.
- Consult the dealer or an experienced radio/TV technician for help. The device has been evaluated to meet general RF exposure requirements. The device can be used in portable exposure conditions without restriction.

NOTE: This device and its antenna(s) must not be co-located or operation in conjunction with any other antenna or transmitter



- The lightning symbol within a triangle means, “Electrical caution!” It indicates the presence of information about operating voltage and potential risks of electrical shock.



- The exclamation point within a triangle means, “Caution!” Please read the information next to all caution signs.

System Overview

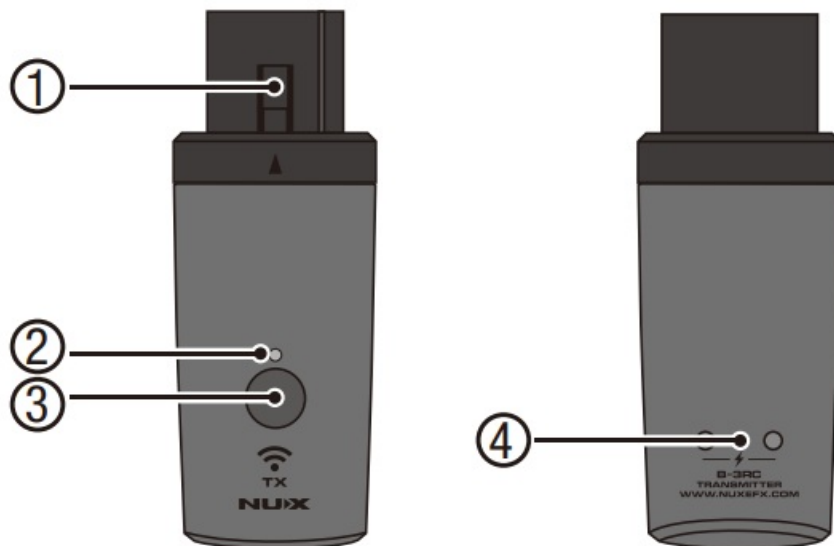
The NUX B-3RC is a new generation of 2.4GHz wireless microphone system, designed for those who want to get rid of the cables and enjoy the wireless world without a complicated setup. An extra dynamic microphone is packed into the box of the bundle set. If the environment is full of RF transmitters, sometimes B-3RC will meet interference, please keep B-3RC at least 3 meters from the Wi-Fi router. NUX B-3RC offers various of 2.4GHz wireless systems, the units will automatically choose a channel from all 6 channels. Please avoid using other wireless systems together with NUX ones, or there may be noise or interference issues.

Features

- Easy to use 2.4GHz wireless microphone system
- 24bit Hi-Resolution audio quality
- Ultra-low latency<4.8ms
- Auto pairing and auto channel selection
- Long-lasting built-in lithium battery(3.5 hours working time)

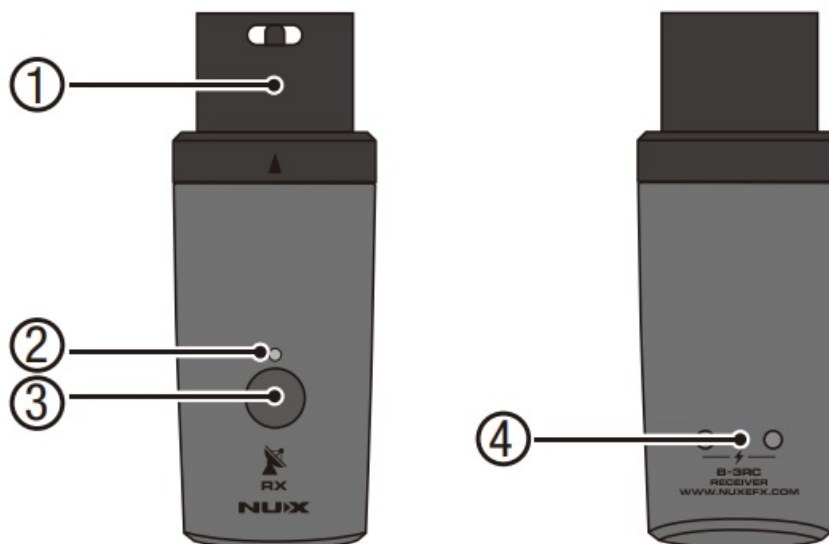
Transmitter

- Female Port
- Battery/Mute Indicator
- Power/Mute Button
- Magnetic charging contacts



Receiver

1. Male Port
2. Power/Mur Indicator
3. Power Button
4. Magnetic charging contacts



NDM-4 Dynamic Microphone

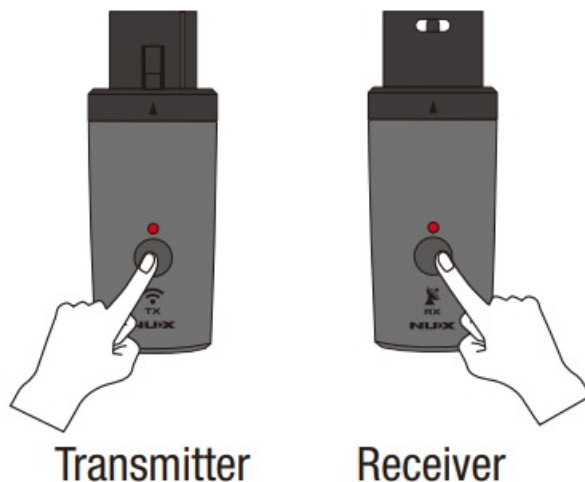
1. Mic
2. Switch
3. Transmitter Port

How to Operate

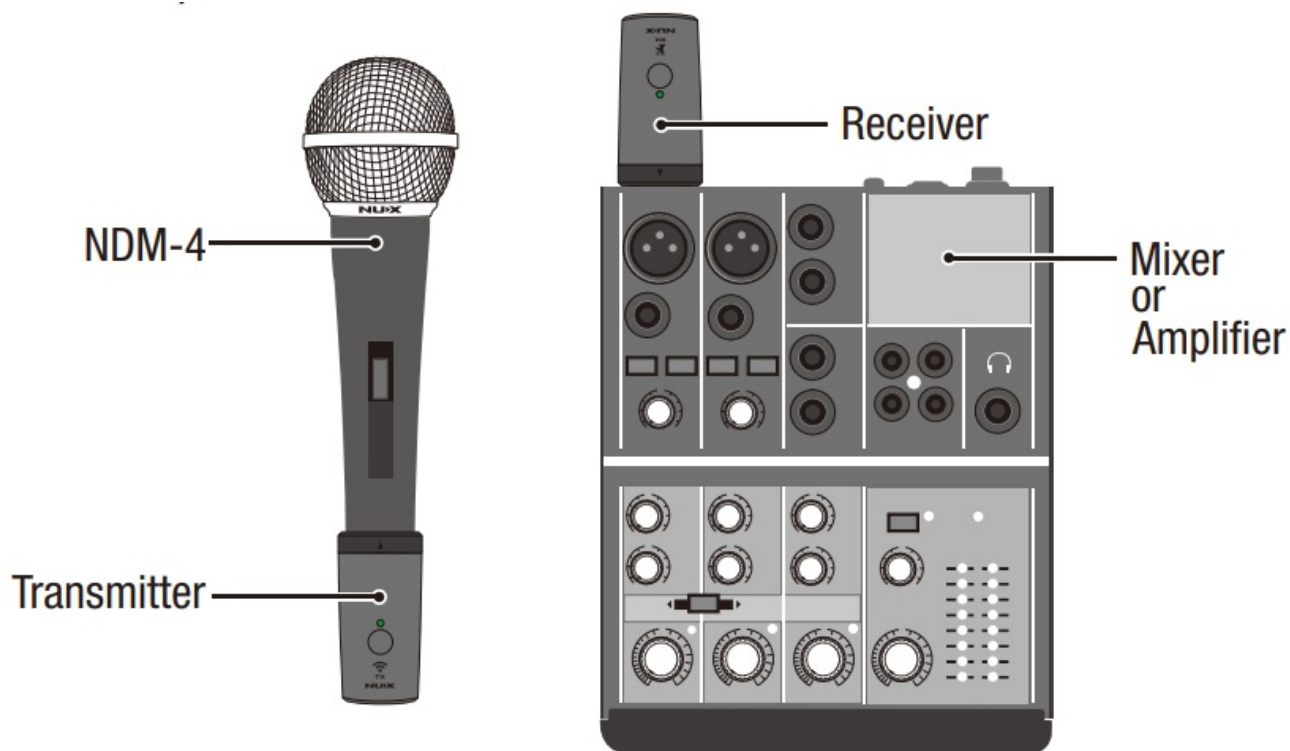
Transmitter and Receiver Pairing\

B-3RC has auto pairing and channel group selection. Please follow the steps:

1. Turn on the Transmitter and Receiver units.



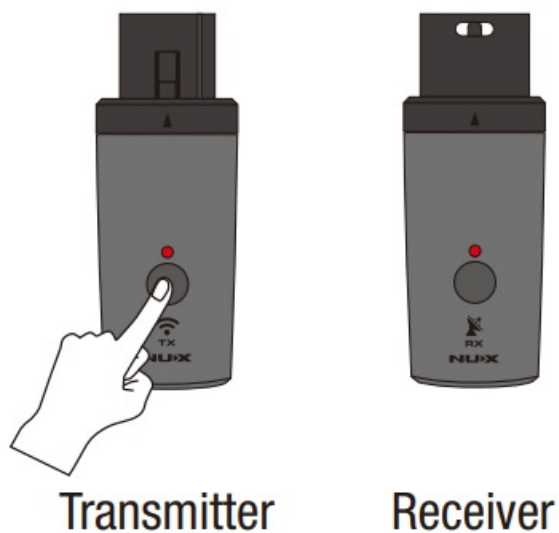
2. The Transmitter and Receiver will get paired automatically. (The device will detect current RF environment and choose the suitable Channel Group to operate while turn on.)
3. Connect the Transmitter to your dynamic microphone, and connect the Receiver to your mixer or amplifier



4. While you turn on the device, the power indicator(s) will show you the current battery status. The power indicator will show “GREEN” while working, if the Receiver does not get the signal, power indicator will show “RED” .

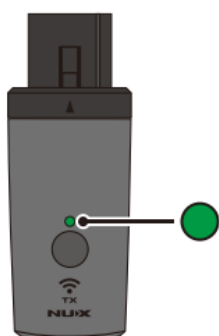
Mute Mode

While working, if you press the Transmitter’s power switch button, the device will enter MUTE mode. The Transmitter and the Receiver’s power indicators will show “RED” .



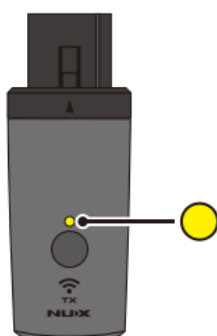
Battery status

When turning on the units, the power indicator shows the battery status:



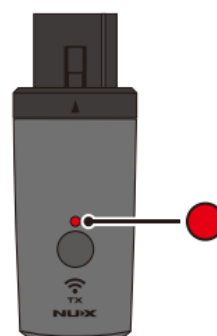
GREEN

Battery level
(100% ≥ Battery ≥ 75%)



YELLOW

Battery level
(75% > Battery ≥ 50%)



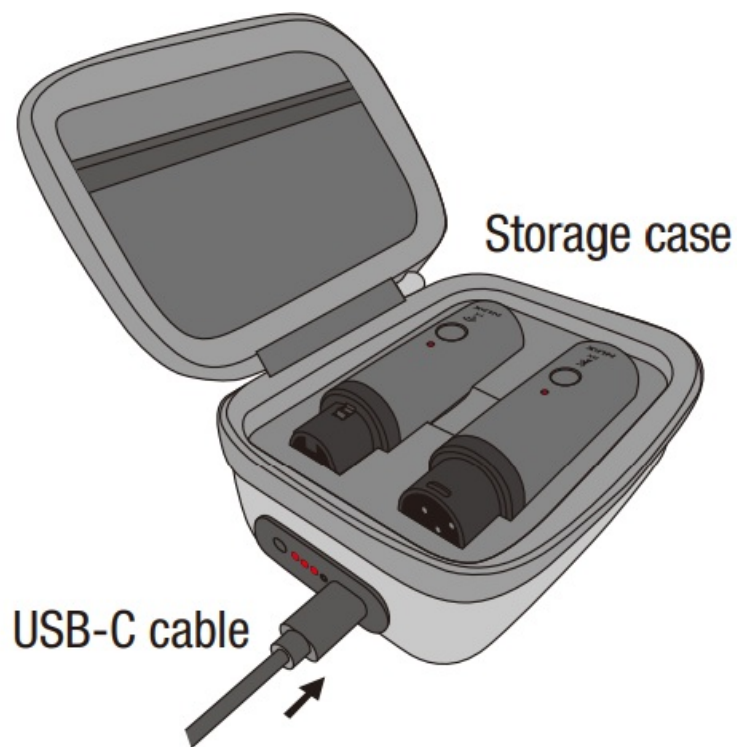
RED

Battery level
(50% > Battery ≥ 25%)

Charge

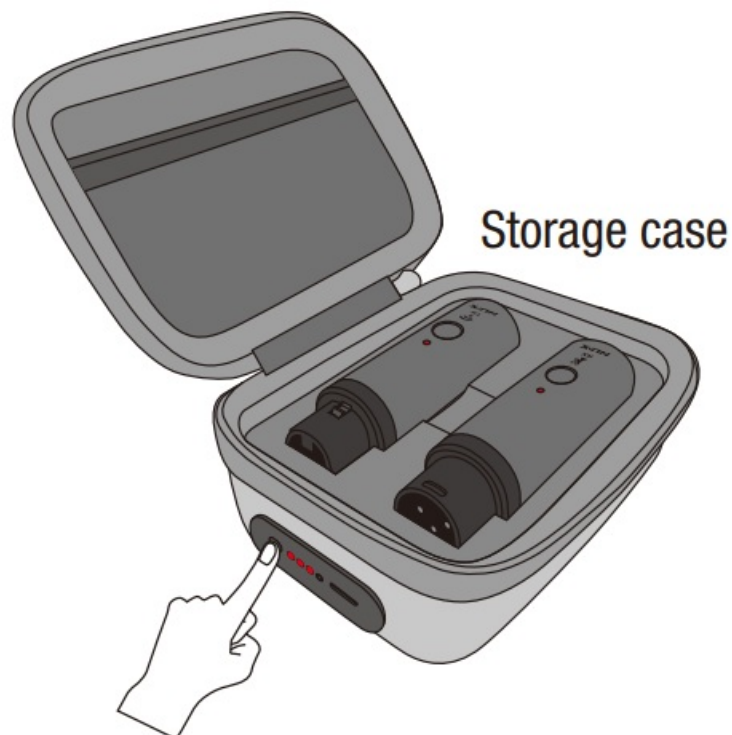
Rechargeable storage case

Charging the storage case: Connect the USB-C cable to the storage case's USB port, use 5V more than 2A adaptor to charge. It will take around 4 hours to fully charge the storage case.



Using storage case to charge the TX & RX

While the TX & RX are in the storage case, press the storage case's power button, the storage case will start to charge both units. While charging, both units will show RED. The storage case LED indicator will turn off after 5 seconds.

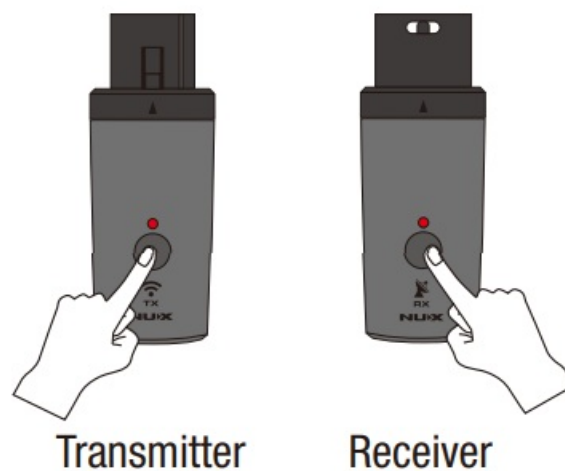


The storage case LED indicator

Mode	SOC	LED 1	LED 2	LED 3	LED 4
Charging	<25%	Flash	Off	Off	Off
	25% - 50%	On	Flash	Off	Off
	50% - 75%	On	On	Flash	Off
	75% - 100%	On	On	On	Flash
	100%	On	On	On	On
Discharging (All off after 5s)	>75%	On	On	On	On
	50% - 75%	On	On	On	Off
	25% - 50%	On	On	Off	Off
	5% - 25%	On	Off	Off	Off
	1% - 5%	Flash	Off	Off	Off
	<1%	Off	Off	Off	Off

Auto-Off Function

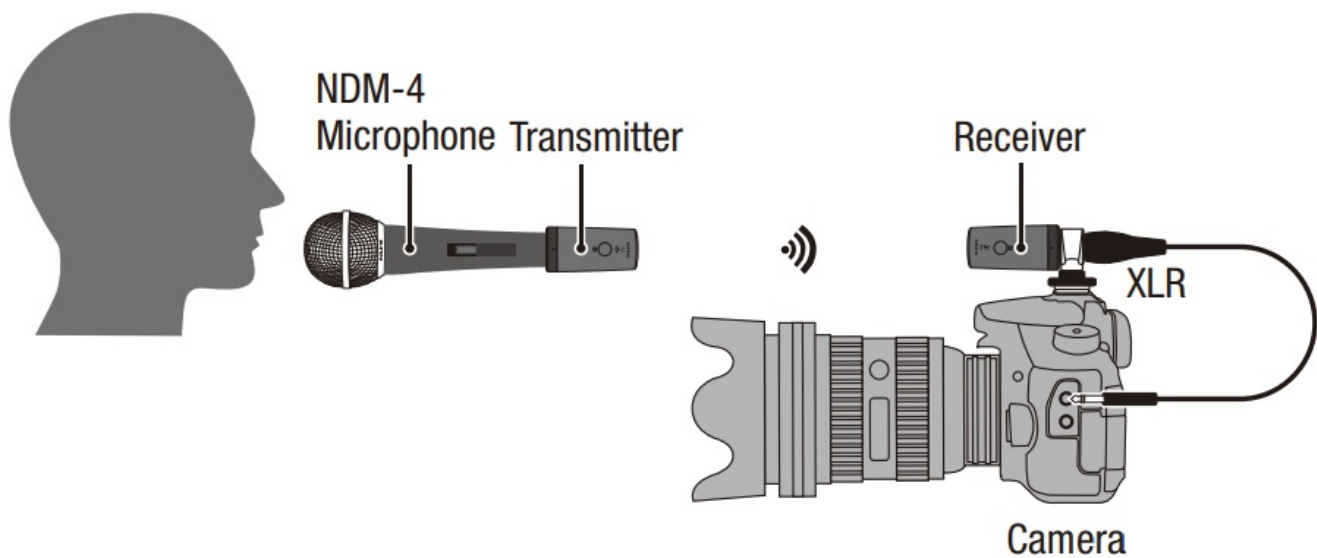
The B-3RC has a built-in auto power off feature. The transmitter or receiver will automatically shut down after 10 minutes if there is no wireless connection.



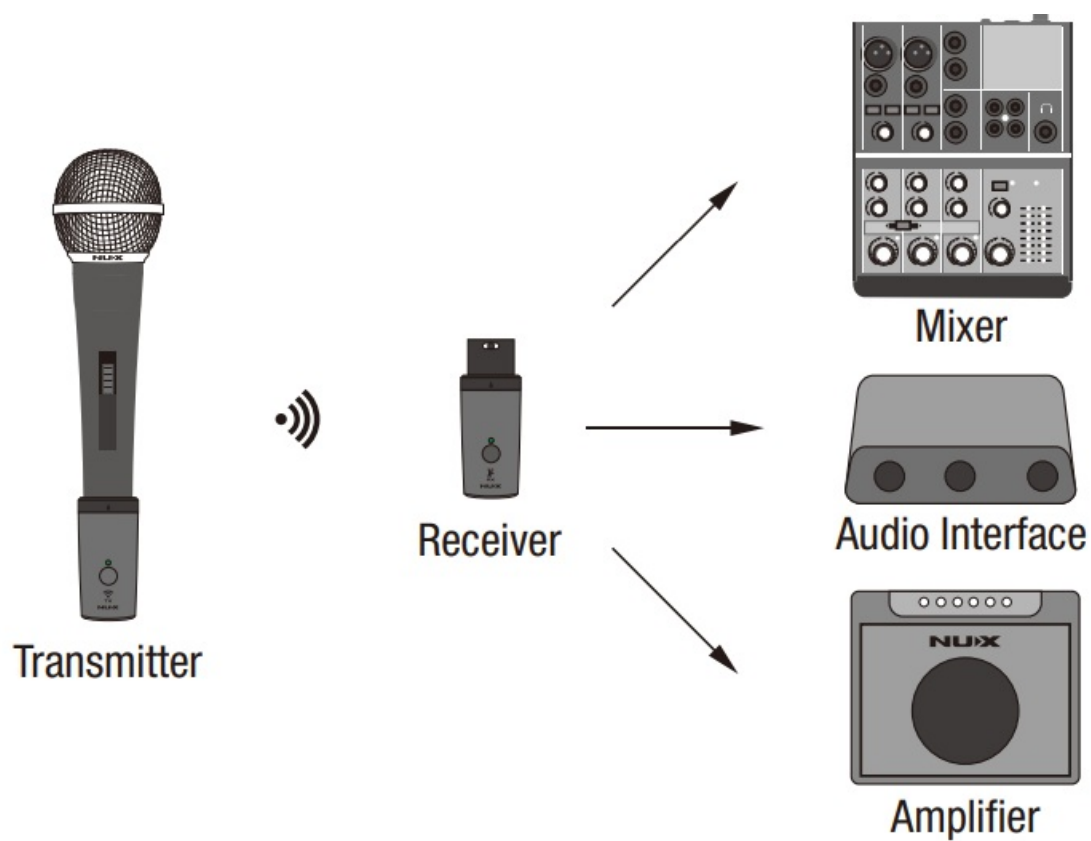
Press the power switch button to wake B-3RC up.

Application Scenarios

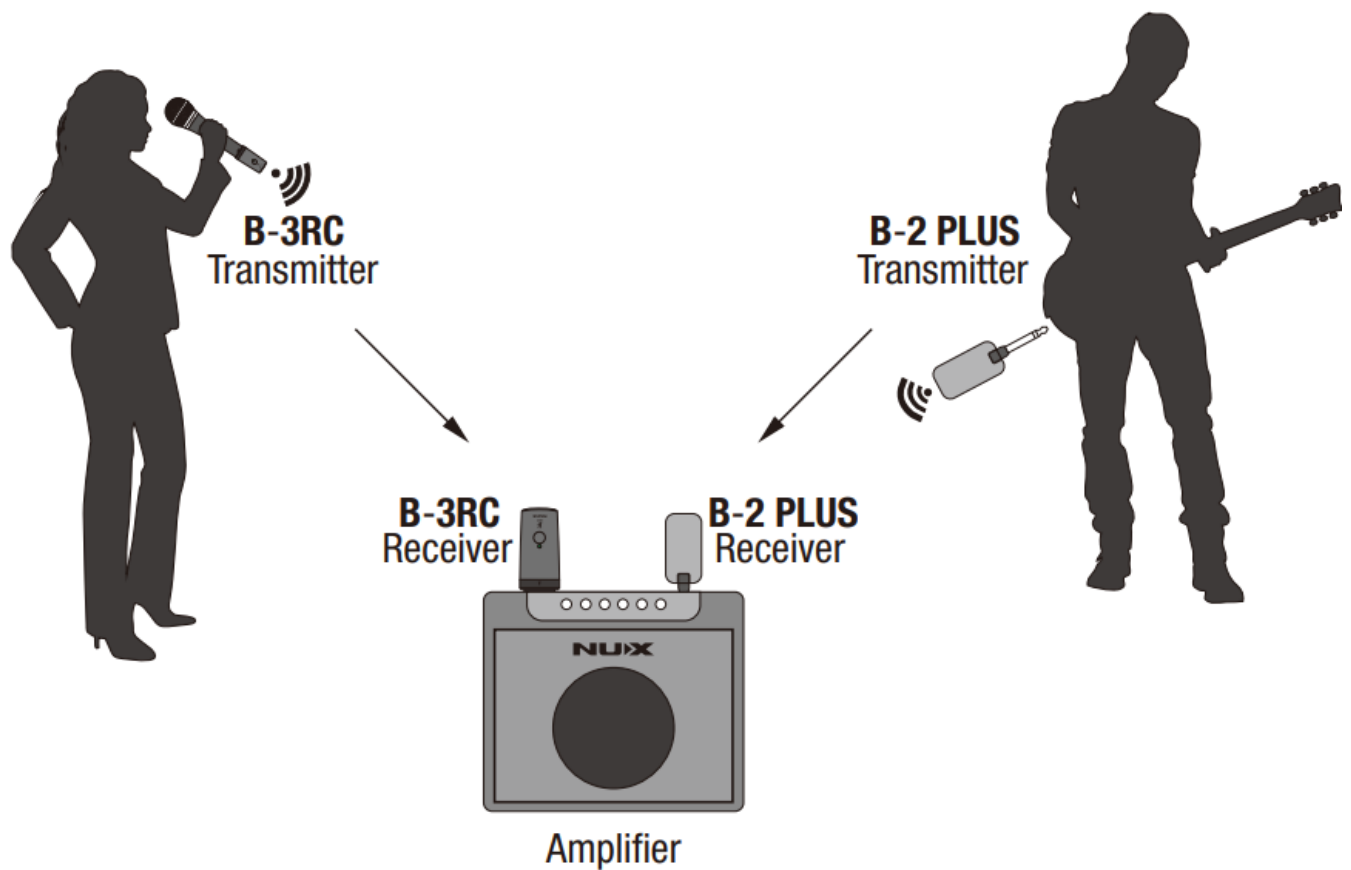
Wireless Recording



Conventional Use 1



Conventional Use 2



Specifications


- 2.4GHz operating frequency
- 24 bit sampling accuracy
- Latency: <4.8ms
- Transmission Range: Up to 100 feet line – of – sight
- THD + Noise < 0.1% @ 1kHz
- Built-in Battery Capacity (TX & RX): 330mAh/3.7V
- TX/RX Battery Running Time: 3.5 hours
- TX/RX Battery Charging Time: around 2.5 hours
- Storage Box Battery Capacity: 3000mAh/3.7V
- Storage Box Battery Charging Time: around 4 hours
- Dimensions
 - Transmitter: 80mm(L) x 24mm(W) x 24mm(H)
 - Receiver: 80mm(L) x 24mm(W) x 24mm(H)
- Weight
 - Transmitter: 36g
 - Receiver: 36g

*Specifications and appearance subject to change without notice.

All Rights Reserved. No part of this publication may be reproduced, stored in a retrieval system, or transmitted, in any form or by any means, electronic, mechanical, photocopying, recording, or otherwise, without the prior written

permission of Cherub Technology Co., Ltd.

Documents / Resources

	NUX B-3RC 2.4GHZ Wireless Microphone System [pdf] Owner's Manual B-3RC 2.4GHZ Wireless Microphone System, B-3RC, 2.4GHZ Wireless Microphone System, Wireless Microphone System, Microphone System, System
---	---

References

- [User Manual](#)

[Manuals+](#), [Privacy Policy](#)

This website is an independent publication and is neither affiliated with nor endorsed by any of the trademark owners. The "Bluetooth®" word mark and logos are registered trademarks owned by Bluetooth SIG, Inc. The "Wi-Fi®" word mark and logos are registered trademarks owned by the Wi-Fi Alliance. Any use of these marks on this website does not imply any affiliation with or endorsement.