

nutribullet
nutribullet
SmartSense Blender



nutribullet SmartSense Blender User Guide

[Home](#) » [nutribullet](#) » **nutribullet SmartSense Blender User Guide** 

Contents

- 1 nutribullet SmartSense Blender**
- 2 Product Usage Instructions**
- 3 Important safeguards.**
- 4 What's included**
- 5 Assembly guide.**
- 6 Control panel.**
- 7 Blending with the Pitcher.**
- 8 Care & maintenance.**
- 9 Documents / Resources**
 - 9.1 References**
- 10 Related Posts**

nutribullet

nutribullet SmartSense Blender

**Specifications:**

- Model: nutribullet SmartSense™ Blender
- Power: 1500 watts
- Capacity: 1.8 L pitcher

Product Usage Instructions**User Safety:**

For personal safety, follow these guidelines:

- Never immerse the Motor Base in water or other liquid.
- Avoid blending hot, warm, or carbonated ingredients in the pitcher.
- When adding ingredients during blending, carefully open the lid cap and pour ingredients into the mixture.

Blender Pitcher Safety:

Handle the blender pitcher with care and only use it with the vented pitcher lid. Avoid blending hot or carbonated ingredients in the pitcher.

Blade Safety:

Blades are sharp, handle with care. Avoid using non-food items or hard ingredients that may damage the blades. Inspect blades regularly and discontinue use if damaged.

Product Safety:

Avoid touching the blades while they are moving. Always unplug the unit and allow the blades to stop before removing the pitcher from the motor base.

Electrical Safety:

Avoid using the blender in locations with incompatible electrical specifications. Never use a converter device that may cause electrical issues.

Ventilation:

Place the motor base on a level surface with proper ventilation to prevent overheating. Avoid placing flammable materials near the blender.

Medical Safety:

Consult your physician for health and nutrition concerns. The information provided is general and not a replacement for professional advice.

FAQ:

- **Q: Can I blend hot liquids in the pitcher?**

A: It is not recommended to blend hot liquids in the pitcher to avoid potential risks of injury.

- **Q: How should I clean the blender?**

A: Only clean the exterior of the motor base with a damp cloth. Do not immerse it in water or other liquids.

SMARTSENSE
TM
BLENDERU

User guide.**Important safeguards.**

When operating your nutribullet® device, remember:

SAFETY COMES FIRST. WHEN USING ANY ELECTRICAL APPLIANCE. BASIC SAFETY PRECAUTIONS SHOULD ALWAYS BE OBSERVED, INCLUDING THE **FOLLOWING**:

WARNING! To avoid the risk of serious injury, death, property damage, or damage to your device, carefully read all instructions before operating your nutribullet® device. When using any electrical appliance, basic safety precautions should always be observed, including the important information in this User Guide.

If you let anyone else use your nutribullet®, make sure that they understand the health and safety information in this User Guide, as well as any additional safety or usage instructions provided. Each person using a device should carefully read the User Guide in its entirety to become familiar with the safe operation of the unit.

Save these instructions!

FOR HOUSEHOLD USE ONLY

PERSONAL SAFETY:

Failure to follow all instructions regarding the use of your nutribullet® device may result in serious personal injury, death, or property damage. Be aware of possible hazards when using or storing your nutribullet®.

WARNING! NEVER BLEND FOR LONGER THAN ONE MINUTE. DO NOT RUN CONSECUTIVE BLENDING CYCLES THAT EXCEED ONE MINUTE TOTAL.

The friction created by the blending process builds heat inside the Cup. Blending continuously for more than one minute increases the risk of pressurisation.

Consecutive blending cycles that exceed one minute total may over-pressurise the Cup, causing the Lid to open

forcefully, or the Cup and Motor Base, Blade, and Lid to separate from the Cup. This could expel hot ingredients and cause exposure to the blade, potentially resulting in bodily injury (including burns) and/or property damage.

- Do not use the nutribullet® for anything other than its intended purpose.
- Do not open the Lid or remove the Motor Base, Blade, and Lid until the blades have come to a complete stop. Blades can still activate when connected to the Motor Base and Lid is open.

WARNING! REMOVE ALL UTENSILS AND NON-FOOD ITEMS FROM THE PITCHER BEFORE OPERATING TO PREVENT BODILY INJURY, OR DAMAGE TO THE BLADE OR PITCHER.

- Do not leave or put non-food items in any of the attachments when blending. Doing so may damage the unit or crack or shatter the attachment, resulting in bodily injury or property damage.
- Close supervision is necessary when any appliance is used by or near children to ensure they do not play with the appliance. Keep cord out of reach of children.
- This appliance is not intended for use by persons (including children) with reduced physical, sensory, or mental capabilities, or lack of experience and knowledge, unless they are closely supervised and instructed concerning the use of the appliance by a person responsible for their safety.

NEVER LEAVE THE NUTRIBULLET® UNATTENDED WHILE IT IS IN USE.

- Do not place or operate the nutribullet® on uneven or unstable surfaces.
- Do not place any nutribullet® part or accessory in a microwave, conventional oven, air fryer, or stovetop pot, or immerse in boiling water, as this will damage the part.
- Do not place or operate your nutribullet® on or near a hot gas or electric burner, or in a heated oven.
- The risk of fire, shock, or damage to nutribullet® during cleaning can be reduced by taking the following precautions:
 - Turn off your device and unplug it before cleaning.
 - Only clean the exterior of the Motor Base with a clean dry cloth.
- To protect against the risk of electrical shock, DO NOT immerse the Motor Base in water or other liquid.

WARNING! NEVER WASH YOUR NUTRIBULLET® PARTS OR ACCESSORIES USING THE SANITISE OR HEAT CYCLE OF YOUR DISHWASHER. DOING SO CAN WARP THE PART, WHICH CAN CREATE HAZARDOUS CONDITIONS DURING USE THAT MAY RESULT IN BODILY INJURY OR PROPERTY DAMAGE.

- NEVER place any nutribullet® parts or accessories in the freezer. Do not use nutribullet® parts and accessories as storage containers in the freezer.
- Never attempt to defeat any safety interlock mechanisms on the appliance.
- Remove and safely discard any packaging material or promotional labels before using the appliance for the first time.
- Do not operate your nutribullet® if any of the parts and accessories are or appear to be damaged in any manner that may impair proper function or create a safety hazard. If you suspect your nutribullet® parts and/or accessories may be damaged, contact Customer Service for assistance at AU: 1300 285 538 / NZ: 0800 232 633.
- Do not use parts, accessories or attachments from other manufacturers, different models of nutribullet® or

magic bullet® products, or canning jars. Use of parts, accessories or attachments NOT specifically designed for your particular nutribullet® device may damage your unit or cause serious bodily injury, fire, or electric shock.

- Use only genuine nutribullet® attachments/accessories specifically designed for your nutribullet® device. Aftermarket parts are not made to nutribullet® specifications and may damage your unit or cause serious injury.

- DO NOT USE OUTDOORS.
- ALWAYS UNPLUG YOUR NUTRIBULLET® WHEN NOT IN USE.
- To unplug, grasp the plug and pull from the outlet. Never pull from the power cord.
- Always POWER OFF and UNPLUG the unit and wait until the Blade comes to a complete stop before assembling, disassembling, changing accessories, or cleaning.

USING THE BLENDING PITCHER:

WARNING! ONLY USE THE BLENDING PITCHER WITH THE VENTED PITCHER LID TO BLEND HOT, WARM,



OR CARBONATED INGREDIENTS.

- ALWAYS attach the Vented Pitcher Lid to the Blending Pitcher with the spout down and closed before blending to prevent ingredients from splashing or hot ingredients from splattering, which may cause burns, bodily injuries, or property damage.
- After blending hot ingredients or liquids, exercise caution when opening the Pitcher Lid, and be mindful of escaping hot steam or splattering hot ingredients.
- Do not overfill the Blending Pitcher beyond the MAX line.
- Do not use the Blending Pitcher if you detect cracking, cloudiness, or other damage. Visit bulletbrands.com.au / bulletbrands.co.nz or contact Customer Service to purchase a new Blending Pitcher.

WARNING! TO INCORPORATE INGREDIENTS DURING BLENDING, CAREFULLY OPEN THE LID CAP FROM THE PITCHER LID AND GENTLY POUR OR DROP INGREDIENTS INTO THE MIXTURE. BE ESPECIALLY MINDFUL WHEN ADDING TO HOT INGREDIENTS AND LIQUIDS, AS ESCAPING STEAM OR SPLATTERS MAY PRESENT A RISK OF INJURY.

- When using manual speeds, start blending on the LOW setting and, once ingredients are integrated, adjust the speed as needed.

BLENDER PITCHER SAFETY:

Proper Blending Pitcher use is important for the safe operation of your nutribullet®. Using the Blending Pitcher inconsistent with these instructions may result in bodily injury, property damage, or damage to your unit.

- Only operate the Blending Pitcher with the Pitcher Lid securely locked in place and the spout closed.
- Before blending, check that the vent slots on the Pitcher Lid are clear and unobstructed. Clogged or obstructed vent slots will pressurise the contents, which can cause the release of hot steam or splattered ingredients upon opening.
- For recipes that require certain ingredients to be incorporated during blending, first add the base ingredients, then attach the Pitcher Lid and begin blending. Once the ingredients are mixed well, twist open the Vented Lid

Cap and carefully pour or drop ingredients into the blended mixture. If the blended mixture is hot or warm, use caution and open the Vented Lid Cap slowly, being mindful of escaping hot steam or the splattering of hot ingredients. Always reinstall the Vented Lid Cap after adding ingredients.

- NEVER place hands or use utensils such as spatulas, spoons, or other tools that may make contact with the spinning blades while in operation. Doing so can damage the unit, shatter the Blending Pitcher, or cause severe bodily injury or property damage.
- ONLY USE THE TAMPER PROVIDED with your nutribullet® through the cover opening to push ingredients closer to the Blade. NEVER use the Tamper without the Pitcher Lid in place. The Tamper is specifically designed to avoid contact with the Blade through the Pitcher Lid. A scraper may be used, but only when the blender is powered off and the blades are at a complete stop.

GENERAL BLADE SAFETY:

WARNING! BLADES ARE SHARP! HANDLE WITH CARE TO AVOID BODILY INJURY. NON-FOOD ITEMS OR HARD INGREDIENTS MAY DAMAGE THE BLADES. ROUTINELY INSPECT THE BLADES AND DISCONTINUE USE IF THE BLADES ARE DAMAGED OR DO NOT FREELY ROTATE. CONTINUED USE WITH DAMAGED BLADES OR USE INCONSISTENT WITH THESE INSTRUCTIONS MAY RESULT IN BODILY INJURY, PROPERTY DAMAGE, OR DAMAGE TO YOUR UNIT.

NEVER STORE THE UNIT WITH THE BLADE EXPOSED. ALWAYS COVER THE BLADE WITH THE PITCHER LID. EXPOSED BLADES PRESENT A LACERATION HAZARD THAT MAY CAUSE SEVERE PERSONAL INJURY.

- Always POWER OFF and UNPLUG the unit and wait until the Blade comes to a complete stop before assembling, disassembling, changing accessories, or cleaning.
- If a leak occurs, power off or unplug the unit and allow the motor to come to a complete stop before removing. Instructions on how to clean up a major spill on next column on page 5.
- DO NOT crush ice. Your nutribullet® is not intended to be used as an ice crusher, which may shatter the Pitcher, causing injury or damage. Always use sufficient liquids when blending.
- Do not overload the Pitcher as this may prevent the blades from spinning.
- Do not attempt to grind dry ingredients such as grains, cereal, or coffee, as this may overheat the motor and/or damage the blades.
- AVOID CONTACT WITH MOVING PARTS! Keep hands and utensils out of and away from the Blade to reduce the risk of severe personal injury or damage to the unit.
- NEVER place the Extractor Blade or other accessory parts on the bottom rack of the dishwasher or use the heat/sanitise cycle while cleaning the components in the dishwasher.
- Periodically inspect your Blade. If the blades do not rotate freely or are damaged, immediately discontinue use and contact Customer Service.
- FOR OPTIMAL PERFORMANCE, WE RECOMMEND REPLACING THE BLADE EVERY 6 MONTHS, OR AS NEEDED, DEPENDING ON USE.
- Use of incompatible parts or aftermarket parts may result in damage to your nutribullet® unit or present safety hazards that may cause personal injury or property damage. When ordering replacement parts, always use genuine nutribullet® parts and accessories from bulletbrands.com.au / bulletbrands.co.nz or by contacting Customer Service at AU: 1300 285 538 / NZ: 0800 232 63.

PRODUCT SAFETY:

- DO NOT attempt to disengage the Pitcher while the blade is still moving.
- If you notice leakage, DO NOT attempt to remove the Pitcher. Immediately unplug the unit and allow the blades to come to a complete stop before removing the Pitcher from the Motor Base.

ELECTRICAL SAFETY:

Modification, improper use, and failure to follow the instructions for proper setup, use, and care of your nutribullet® device can increase the risk of property damage, serious personal injury, or death.

- In order to avoid a hazard due to inadvertent resetting of the thermal cut-out, this appliance must not be powered or operated through an external switching device, such as a timer, or connected to a circuit that is regularly switched on and off by the utility.
- NEVER use the unit in countries or locations with incompatible electrical specifications or plug types.
- DO NOT use the unit with a voltage converter device, as it may cause electrical shorting, fire, or electric shock, all of which may result in personal injury or property damage.
- Do not use the unit if the cord, plug, or Motor Base has been immersed in water or other liquids.

HOW TO CLEAN UP A SPILL:

STEP 1: The most important thing is to UNPLUG the motor base before cleaning!

STEP 2: Make sure the blade is not attached to the motor base.

STEP 3: Use a damp cloth to wipe down the inside and outside of the Motor Base.

- Do not attempt to plug the unit into an electrical outlet with wet hands.
- Do not use the cord, plug, or Motor Base if it has been immersed in water or other liquids. Any significant spillage on, under, or around the Motor Base should be cleaned and dried before plugging in and using the unit.
- Do not modify the electrical cord in any way.
- Do not attempt to plug the unit into an electrical outlet with wet hands.
- Avoid contact with the control panel display when the power icon is illuminated to prevent inadvertent and unexpected operation of the unit.
- Do not modify the electrical cord in any way.
- Do not operate any unit with a damaged electrical cord or plug. The electrical cord and plug are not suitable for replacement. If damaged, the appliance should be replaced. Contact Customer Service for assistance at AU: 1300 285 538 / NZ: 0800 232 63.
- Do not allow or place the electrical cord near or touching any hot surfaces, heat source, or flame, including the stove.
- Do not allow the electrical cord to hang over the edge of a table or counter.
- Do not pull, twist, or damage the power cord.
- Overloading the unit with ice or other ingredients may overheat the motor and engage the thermal breaker. If the internal thermal breaker shuts off the motor, unplug the Motor Base and let it cool for an hour before attempting to use it again. The thermal breaker will reset when the unit is unplugged and the thermal breaker cools down.
- Always UNPLUG your nutribullet® when it is not in use, and when assembling, disassembling, changing accessories, or cleaning.
- NEVER pull the power cord to remove the plug from the outlet. To unplug, grasp the plug and pull from the outlet.
- Use of incompatible parts or aftermarket parts may result in damage to your nutribullet® or present safety

hazards that may cause personal injury or property damage. When ordering replacement parts, always use genuine nutribullet® parts and accessories from bulletbrands.com.au / bulletbrands.co.nz or contact Customer Service at AU: 1300 285 538 / NZ: 0800 232 63.

VENTILATION:

- NEVER obstruct the ventilation openings on the bottom of the Motor Base of your nutribullet® device. Openings on the bottom of the Motor Base should be free of dust and lint and never obstructed. Obstructing the ventilation openings may overheat the motor, presenting a fire hazard that may cause property damage, serious personal injury, or death.
- ALWAYS operate the nutribullet® on a level surface, leaving unobstructed space beneath and around the Motor Base to permit proper air circulation. Slots on the bottom of the Motor Base are provided for ventilation to ensure reliable operation and to prevent the motor from overheating.
- NEVER place your nutribullet® on top of flammable materials such as newspapers, tablecloths, napkins, dishtowels, placemats, or similar materials.

MEDICAL SAFETY:

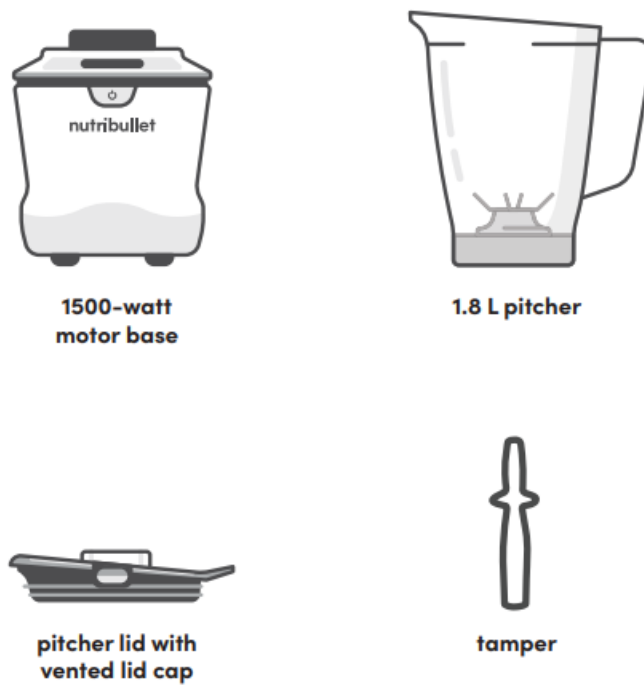
Always consult your physician regarding health and nutrition concerns and advice. The information contained in this User Guide, accompanied Recipe Guide, and/or online recipes are general suggestions and ideals, and are not meant to replace the advice of your physician

- ALWAYS follow recommended maintenance and care instructions in the User Guide. NEVER operate your nutribullet® with damaged components. If your nutribullet® malfunctions in anyway, immediately discontinue use and contact Customer Service at AU: 1300 285 538 / NZ: 0800 232. If you have any comments, questions, or concerns, please go to bulletbrands.com.au / bulletbrands.co.nz or call Customer Service.

Save these instructions!

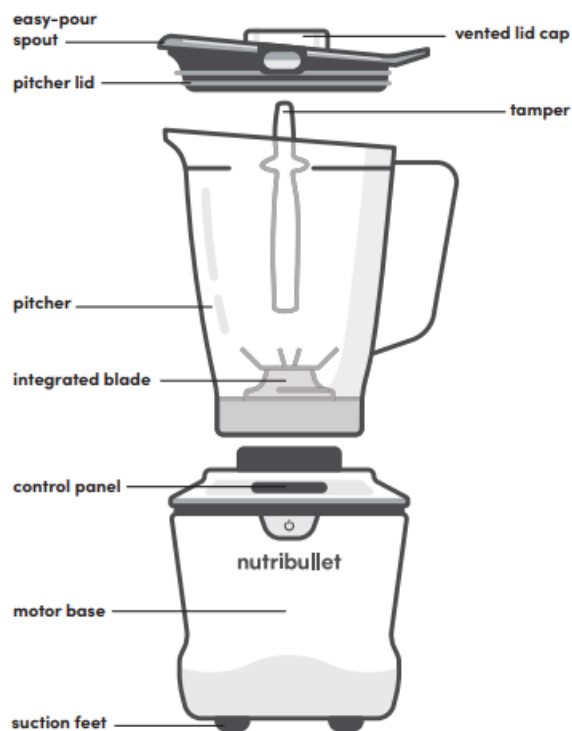
Thank you for purchasing the nutribullet SmartSense™ Blender.

What's included



Product configurations may vary. To see our full list of nutribullet® accessories, please visit bulletbrands.com.au / bulletbrands.co.nz

Assembly guide.

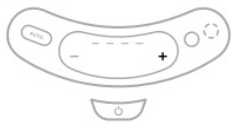


Control panel.



POWER

The Power button turns on the unit and illuminates the Control Panel.



The + button increases the blending speed within a range of 1 to 5. Blending speeds must be set prior to blending and can be adjusted at any point of the blending process.



The — button decreases the blending speed with in a range of 1 to 5. Blending speeds must be set prior to blending and can be adjusted at any point of the blending process.



AUTO

The AUTO button runs a fully automated cycle that determines the exact time, speed, and setting needed to optimally blend ingredients.



BLEND

The Solid Circle BLEND button activates blending for manual speeds. Press the BLEND button once to start blending, and a second time to stop.



PULSE

The Dashed Circle PULSE button activates the PULSE blending function. Set your blending speed, then press the PULSE button for hands-on control over blending time. Press and release quickly to pulse in short bursts, or press and hold the button down for a longer pulse.



TIMER

An LED timer counts up during the blending cycle to keep track of the length of your blends. Both manual and AUTO blending programs display the timer during blending. The speed setting is displayed in the status bar above the timer.

Blending with the Pitcher.

PLEASE KEEP THESE IMPORTANT SAFEGUARDS IN MIND WHEN USING THE APPLIANCE:

- Make sure the Motor Base is plugged in for use.
- DO NOT attempt to operate the Blending Pitcher on the appliance without attaching the Pitcher Lid and Vented Lid Cap.
- Never run the appliance while empty.
- Appliance accessories are not intended to be used in the microwave; microwaves may damage the accessories.
- Never leave the appliance unattended while in use. Use extra caution when blending hot liquids in the Pitcher.

WARNING! ALWAYS ATTACH THE PITCHER LID AND VENTED PITCHER LID CAP TO THE PITCHER BEFORE BLENDING HOT LIQUIDS TO PREVENT SPLATTERING OF CONTENTS WHICH MAY CAUSE BURNS AND

BODILY INJURIES. THE VENTED LID CAP IS VENTILATED TO ALLOW STEAM AND PRESSURE TO BE RELEASED WHILE GUARDING AGAINST EXCESS SPLASHING. WHEN BLENDING HOT INGREDIENTS, DO NOT PLACE HANDS NEAR THE VENTED LID CAP AS HOT STEAM AND SPLATTERS RELEASED CAN RESULT IN SCALDING OR BURN INJURIES.

FOR RECIPES THAT REQUIRE CERTAIN INGREDIENTS TO BE INCORPORATED DURING BLENDING, CAREFULLY REMOVE THE VENTED LID CAP AND POUR OR DROP INGREDIENTS INTO THE BLENDING MIXTURE.

BE ESPECIALLY MINDFUL WHEN ADDING INGREDIENTS TO HOT INGREDIENTS AND LIQUIDS, AS ESCAPING STEAM OR SPLATTERS MAY PRESENT A RISK OF INJURY. DO NOT EXCEED THE MAX LINE WHEN INSERTING ADDITIONAL INGREDIENTS. ALWAYS REINSTALL THE VENTED LID CAP AFTER ADDING THE INGREDIENTS. ALWAYS START THE BLENDING CYCLE ON THE LOW SETTING, INCREASING SPEED ONCE THE INGREDIENTS ARE INTEGRATED AND THE MIXTURE IS LEVEL (NO SPLASHING).

1. Place the Motor Base on a clean, dry, level surface, such as a counter or table.
2. Place the Pitcher on a clean, dry, level surface and add the ingredients to the Pitcher, making sure they do not exceed either the lower LIQUID MAX (1.65L) or higher solid MAX (1.8L) line.
- 3.



Mount the Pitcher Lid with Vented Lid Cap onto the Pitcher with the spout opposite the handle. The Pitcher Lid with Vented Lid Cap will snap into place when secured onto the Pitcher.



4. Place the Pitcher onto the Motor Base with the handle pointed directly toward the Control Panel. Twist clockwise to lock the Pitcher into place. (You should hear a “click” when it’s locked.)

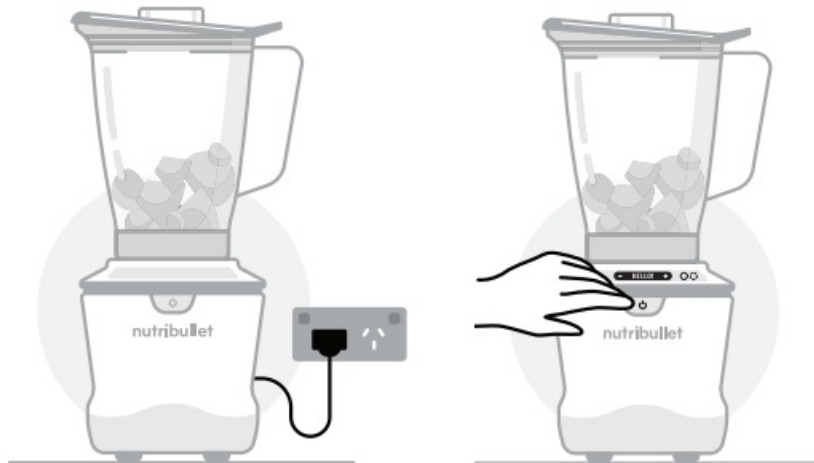
NOTE: If you are left-handed, place the handle facing toward the centre of the blending Control Panel and twist clockwise.

- 5.



Plug the Motor Base's power cord into an electrical outlet.

6. Press the Power Button to turn on the Blender. You will see the Control Panel illuminate.



7. Press the + or – buttons to increase or decrease blending speeds. Press the Solid Circle to start a blending cycle. Press the Dotted Circle for pulse blending. Press AUTO for an automated, high-speed blending cycle.
NOTE: You can press the Solid Circle or AUTO buttons again to pause or stop a blending cycle.



8. Once the blending cycle is complete, wait for the blades to stop turning.

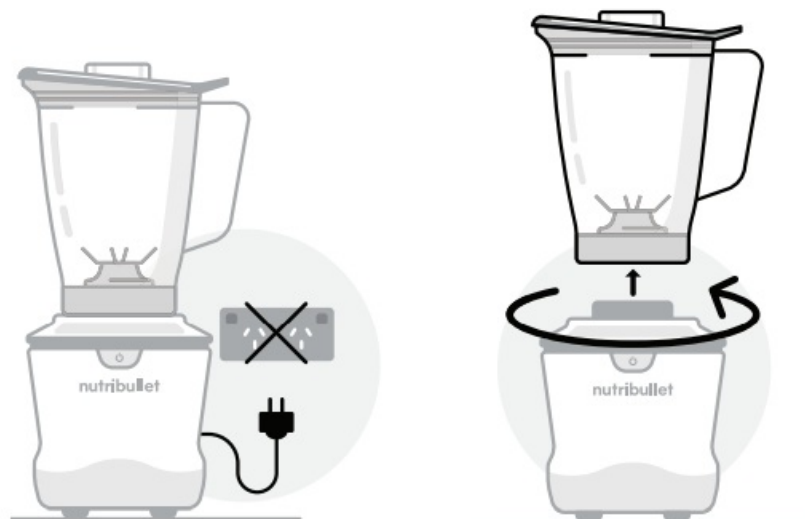


9. Press the Power Button to turn off the blender.
10. Twist the Pitcher counterclockwise to unlock,



Care & maintenance.

Here's how to clean your nutribullet®:



1. ALWAYS POWER OFF THE UNIT and UNPLUG the Motor Base from the power outlet when it is not in use.
Only attempt to handle the appliance once all parts have stopped moving! This includes during assembly and disassembly, while changing accessories during cleaning, and any time you leave the machine unattended.
2. Detach the nutribullet® Pitcher from the Motor Base.



3. Clean the individual components (Motor Base and Pitcher) as recommended in the following pages.

MOTOR BASE:

- To avoid the risk of injury, NEVER attempt to clean the actuator system on the Motor Base while the nutribullet® Blender is plugged in.
- Do not attempt to remove any pieces from the Motor Base.
- Use a sponge or dishcloth dampened with warm soapy water to wipe down the Motor Base until clean.
- To clean leakage residue from the Motor Base, wipe with a damp sponge and warm water.
- If necessary, you may use a small brush to scrub the actuator system area to ensure it's clean.

WARNING! Never submerge the Motor Base in water.

NUTRIBULLET® PITCHER:

WARNING! Blades are sharp! Use caution when cleaning the Pitcher.

- The Pitcher is dishwasher-safe. We recommend rinsing and briefly scrubbing it with a dish brush to remove any remaining debris before placing it in the dishwasher. NEVER use the heat/sanitize cycle to wash the Pitcher — high temperatures can warp the plastic.
- If preferred, hand-wash the Pitcher with soap and water. Stuck-on ingredients might require extra scrubbing with a dish brush or sponge.
- Regularly check the structure of the Pitcher and twisting threads for cracking, crazing, or breakage.
 - If damaged, replace immediately to prevent the risk of personal injury.

WARNING! NEVER USE A PITCHER THAT DOES NOT PROPERLY ALIGN WITH THE BLADE. Doing so may cause the Pitcher and Motor Base to separate, exposing the blade assembly and potentially causing severe personal injury.

EXTRACTOR BLADE:

WARNING! Blades are sharp! Handle the Extractor Blade with care when cleaning!

- Clean blades immediately after each use. For stubborn buildup, use a small brush or sponge to dislodge. After washing, dry the Extractor Blade completely.
- Do not remove any components of the Extractor Blade; this can result in permanent damage to the Blade, resulting in leakage when blending. If, over time, the Extractor Blade becomes loose or damaged, you may order a new Extractor Blade by contacting Customer Service at AU: 1300 285 538 / NZ: 0800 232 633.
- Periodically inspect your Extractor Blade. If the blades do not rotate freely or are damaged, immediately discontinue use and contact Customer Service. For optimal performance, we recommend replacing the Blade every 6 months, or as needed, depending on use.

WARNING! Never leave the Extractor Blade exposed when storing. Always attach the Extractor Blade to the Pitcher for proper storage.

TAMPER:

- Always hand-wash the Tamper with soap and water. Stuck-on ingredients might require extra scrubbing with a

dish brush or sponge.

STUBBORN CLEANUP:

If ingredients dry inside the nutribullet® Pitcher, fill your vessel with room-temperature water (70°F/21°C) to the liquid MAX line and add 1-2 drops of dish soap. Attach the Pitcher Lid with the Vented Lid Cap inserted, and place the Pitcher on the Motor Base. Blend on LOW for 20-30 seconds; this should loosen debris enough to scrub away with soap and water.

STORING:

Store the nutribullet® Pitcher upright with the Pitcher Lid secured on top. Do not place anything on top of the Pitcher Lid. Store the remaining pieces in a safe place where they will not be damaged and won't cause harm.

For replacement parts.

To order additional parts and accessories, please visit our website at bulletbrands.com.au / bulletbrands.co.nz or feel free to contact Customer Service at AU: 1300 285 538 / NZ: 0800 232 633.

one (1) year limited replacement warranty statement.

If your product becomes defective due to faulty material or workmanship within a period of 1 year from the date of purchase, we warrant to do the following:

- For New Zealand Consumers: We will replace the product with a new product, free of charge, or repair the product at our cost, at our discretion.
- For Australian Consumers: Our goods come with guarantees that cannot be excluded under the Australian Consumer Law. You are entitled to a replacement or refund for a major failure and for compensation for any other reasonably foreseeable loss or damage. You are also entitled to have the goods repaired or replaced if the goods fail to be of acceptable quality and the failure does not amount to a major failure.

YOUR WARRANTY

IS SUBJECT TO THE FOLLOWING CONDITIONS:

- DO NOT operate the appliance with a damaged plug or cord, or if the unit has been dropped, damaged or dropped in water. To avoid the risk of electric shock, do not disassemble or attempt to repair the appliance on your own. If the supply cord is damaged, it must be replaced by a qualified electrician in order to avoid a hazard. Incorrect re-assembly or repair can cause a risk of electric shock or injury to persons when the appliance is used.
- The item has not been misused, abused, neglected, altered, modified, or repaired by anyone.
- The item has been subjected to fair wear and tear.
- The item has not been used for trade, professional, or hire purposes.
- The item has not sustained damage through foreign objects, substances or accidents.

YOUR WARRANTY DOES NOT COVER:

- Components that are subject to natural wear and tear caused by normal use in accordance with operating instructions.
- Unauthorised/improper maintenance/handling or overload is excluded from this warranty.
- For guarantee claims, you will need to submit a proof of purchase in the form of a valid receipt that displays date and place of purchase.

This warranty does not replace but is in addition to your statutory rights.
This warranty does not apply to accessories supplied with the item.
This warranty applies only to the original purchaser and may not be transferred.
Replacement items will be covered by the limited warranty for the balance of the warranty period from the date of the original purchase.

PLEASE NOTE:

Only the defective product or parts returned to place of purchase will be replaced under this warranty.

NEW ZEALAND

- PO Box 100-707
- NSMC
- Auckland 0745 0800 232633
- bulletbrands.co.nz


AUSTRALIA

- PO Box 574
- South Morang Victoria 3752
- 1300 285538 bulletbrands.com.au

nutribullet® is a registered trademark of CapBran Holdings, LLC. Copyright © 2024 CapBran Holdings, LLC. All rights reserved. Los Angeles, CA 90024, USA. Made in China.

Capital Brands Distribution, LLC | All rights reserved. nutribullet® and the nutribullet® logo are trademarks of CapBran Holdings, LLC registered in the U.S.A. and worldwide. Illustrations may differ from the actual product. We are constantly striving to improve our products, therefore the specifications contained herein are subject to change without notice.
240717_NBF07600

Documents / Resources

 <p>nutribullet SMARTSENSE blender</p> <p>User guide.</p>	<p>nutribullet SmartSense Blender [pdf] User Guide SmartSense Blender, Blender</p>
--	--

References

- [n NutriBullet New Zealand | Shop Blenders, Food Prep & Cooking Appliances](#)
- [n NutriBullet Australia | Shop Blenders, Food Prep & Cooking Appliances](#)
- [User Manual](#)