

NUTRIBULLET NBJ50300 Slow Masticating Juicer Machine



NUTRIBULLET NBJ50300 Slow Masticating Juicer Machine User Guide

[Home](#) » [nutribullet](#) » NUTRIBULLET NBJ50300 Slow Masticating Juicer Machine User Guide 

Contents

- [1 NUTRIBULLET NBJ50300 Slow Masticating Juicer Machine](#)
- [2 Important safeguards](#)
- [3 What's included](#)
- [4 Assembly guide](#)
- [5 Before first use](#)
- [6 Assembly](#)
- [7 Usage instructions](#)
- [8 Juicing tips](#)
- [9 Troubleshooting](#)
- [10 Disassembly](#)
- [11 Care and maintenance](#)
- [12 WARRANTY](#)
- [13 LIMITED WARRANTY FOR NUTRIBULLET®](#)
- [14 FREQUENTLY ASKED QUESTIONS](#)
- [15 VIDEO – PRODUCT OVERVIEW](#)
- [16 References](#)

nutribullet®

NUTRIBULLET NBJ50300 Slow Masticating Juicer Machine



Important safeguards

Warning! To avoid the risk of serious injury, carefully read all instructions before operating your NutriBullet® Slow Juicer. When using any electrical appliance, basic safety precautions should always be observed, including the following important information.

Save these instructions!

FOR HOUSEHOLD USE ONLY

GENERAL SAFETY INFORMATION

- This juicer system has moving parts, and is not intended for use by children or persons with reduced physical, sensory, or mental capabilities, or who lack experience and knowledge of its safe operation. Such persons require close supervision and thorough instruction on its proper use and safe operation.
- Close supervision is necessary when any appliance is used by or near children. Children should be supervised to ensure that they do not play with the appliance. Keep cord out of reach of children. This appliance is not a toy.
- To protect against fire, electrical shock, and injury to persons, do not immerse the appliance, motor base, cord, plug-in water, or any other liquid.
- Unplug from the outlet when not in use, before putting on or taking off parts, and before cleaning or attempting to move the appliance.
- To unplug, grasp the plug and pull from the outlet. Never pull from the power cord.

Avoid contact with moving parts.

- Regularly inspect the power cord, plug, and entire appliance for any damage.
- Do not operate any appliance with a damaged cord or plug or after the appliance malfunctions, or is dropped or damaged in any manner.
- Contact NutriBullet® customer service for assistance at 1 (800) 523-5993.
- The use of attachments not recommended or sold by NutriBullet® may cause fire, electric shock, or injury.
- This appliance is for household use only. Do not use this appliance for anything other than its intended use. Do not use outdoors. Misuse may cause injury.
- Do not let the power cord hang over the edge of a table or countertop.
- Do not let the power cord touch hot surfaces, including the stove, or become knotted or tangled.
- Always make sure the juice bowl cover is securely in place and locked to the juice bowl before the motor is turned on. Do not attempt to unlock the juice bowl cover from the juice bowl while the juicer is in operation.
- Always make sure the juicer is turned off after each use. Make sure the auger has stopped rotating and the motor has completely stopped before disassembling. The juicer will automatically turn off if the juice bowl cover is removed during operation.
- Do not push food into the feed chute with your fingers or utensils. Always use the food pusher provided. Do not place your hand or fingers into the feed chute when it is attached to the appliance. If food becomes lodged in the feed chute, use the food pusher provided to push it down. Turn the motor off and ensure that all moving parts have stopped before disassembling the juicer to remove the remaining food.
- Turn the motor off, unplug the unit, and ensure that all moving parts have stopped before disassembling the juicer to remove the remaining food or to clean.
- Do not use the appliance if the auger is damaged.
- This appliance has a polarized plug (one prong is wider than the other). To reduce the risk of electric shock, this plug will fit in a polarized outlet only one way. If the plug does not fit fully in the outlet, reverse the plug. If it still does not fit, contact a qualified electrician. Do not modify the plug in any way.

ADDITIONAL SAFEGUARDS

- Remove and safely discard any packaging material or promotional labels before using the juicer for the first time.
- To eliminate a choking hazard for young children, remove and safely discard the protective cover fitted to the power plug of this appliance.
- Do not put any NON-food items into the feed chute.
- Always make sure the juicer is properly and completely assembled before connecting to a power outlet and operating.
- Ensure that the surface where the appliance operates is stable, level, clean, and dry.
- Vibration may occur during normal operation.
- Any significant spillage onto the surface under or around the appliance, or onto the appliance itself, should be cleaned and dried before continuing to use the appliance.
- When using this appliance, provide adequate air space above and on all sides for circulation.
- Do not operate the juicer for more than 15 minutes at a time when juicing at a rapid rate or with firm pressure. Allow the motor to rest for 1 (one) minute between each use.

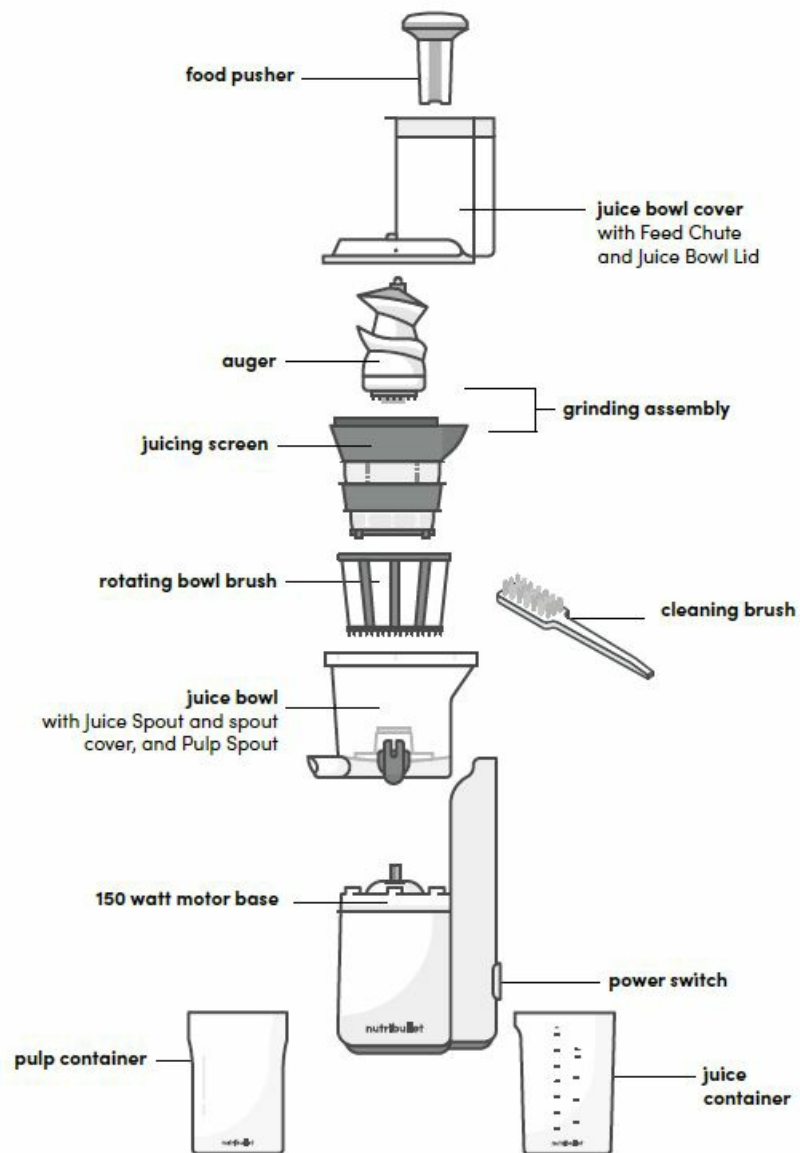
This juicer is only designed to juice fresh fruits and vegetables. Do not use any frozen fruits or vegetables.

- Remove rind from all citrus fruit before juicing.
- Do not juice stone fruit unless pits or seed stones have been removed.
- Do not leave the appliance unattended when in use. Keep hands, fingers, hair, clothing, as well as spatulas and other utensils, away from the feed chute opening during operation.
- Keep the appliance clean. Refer to the Care and Cleaning section for tips and best practices.
- Any maintenance other than cleaning should be performed by an authorized NutriBullet® Service Center.
- Do not attempt to repair or service this juicer yourself. Contact NutriBullet® Customer Service for assistance at 1 (800) 523-5993.
- If any of the contained instructions or warnings are not understood, please contact NutriBullet® Customer Service for assistance at 1 (800) 523-5993.

What's included



Assembly guide



Before first use

Before using your juicer for the first time, please take a moment to perform the steps below.

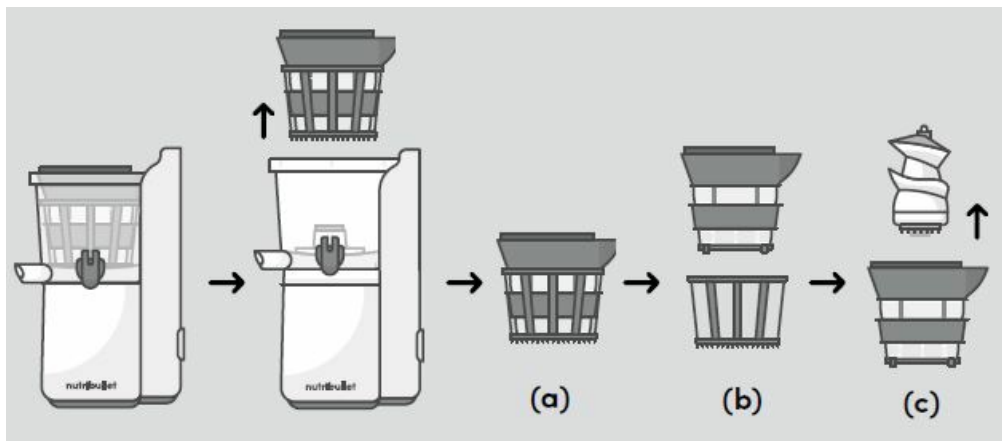
UNPACK

- Open the box and remove the appliance with its various components, placing all parts on a flat, level surface.

SEPARATE

A few parts will be packed together. Separate them using the following 3 steps (see image):

- Lifting up, remove the Grinding Assembly and Rotating Bowl Brush together from the Juice Bowl.
- Detach the Rotating Bowl Brush by moving it down.
- Lifting up, remove the Auger from the Juicing Screen.



CLEAN

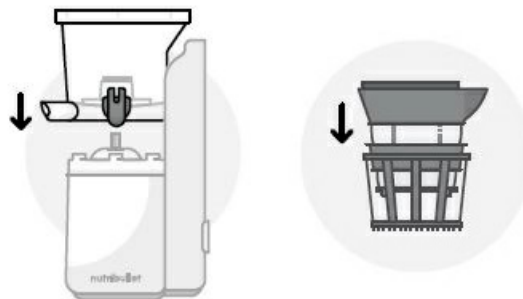
- Immerse all detachable parts and accessories (not the base) in warm, soapy water. Rinse and dry.
- Clean the outside of the base with a clean, damp cloth.
- **WARNING:** Never submerge the Motor Base in water or any other liquid.

Assembly

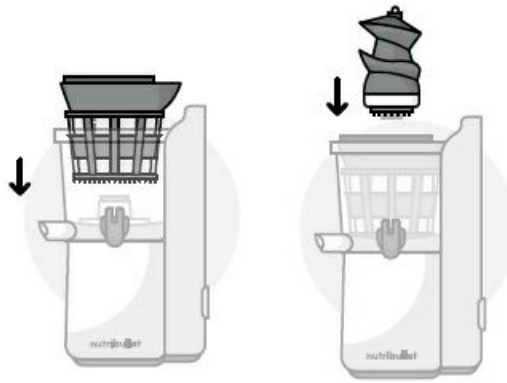
- Before starting assembly, check that the appliance is unplugged and the power switch is off.
- Check the position of the pulp plug. Look at the bottom of the Juice Bowl. Make sure the pulp plug is positioned properly in the pulp spout (see image).



- Attach Juice Bowl to Motor Base. Position the Juice Bowl on top of the Motor Base and push downwards, making sure the bowl is tightly fastened to the base and locked securely in place. The Juice Bowl must be attached in its proper position or the appliance will not operate.
- Put the Juice Screen into the Rotating Bowl Brush.

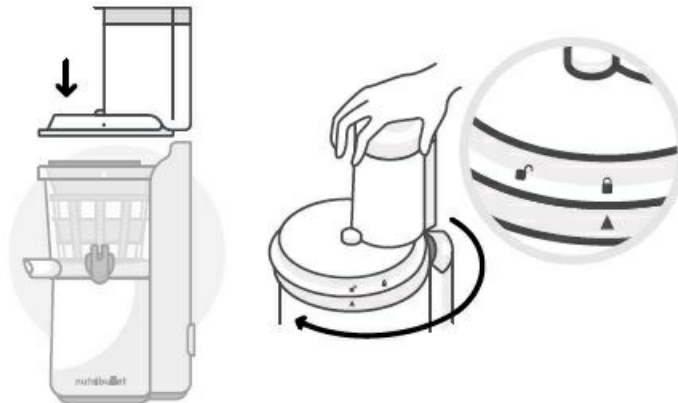


- Place the screen and brush assembly into the Juice Bowl.
NOTE: You may need to turn it slightly before it seats properly.
- Put the Auger into the strainer and ensure the Auger is positioned properly onto the center axis. Turn and press down on the head until it is seated securely into place.

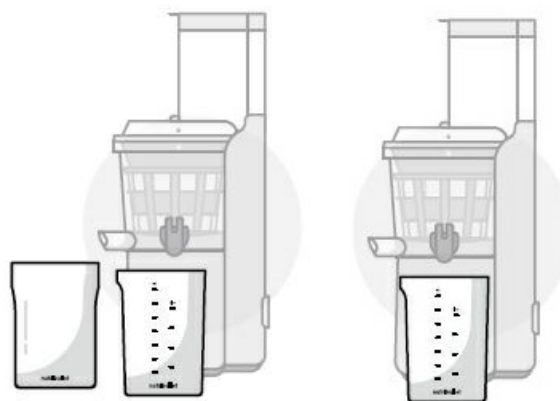


- Place the Juice Bowl Cover on top of the Juice Bowl, making sure the “unlocked” symbol on the lid aligns with the arrow symbol on the bowl. Rotate cover clockwise to lock it in place.

NOTE: To ensure the Juice Bowl Cover is fully locked, rotate it until the “locked” symbol on the Juice Bowl Cover aligns with the up-triangle symbol on the Juice Bowl (see closeup image). Make sure the Juice Bowl Cover is fully locked in position, or the appliance will not operate. (To remove the Juice Bowl Cover from the Juice Bowl, rotate it counter-clockwise.)



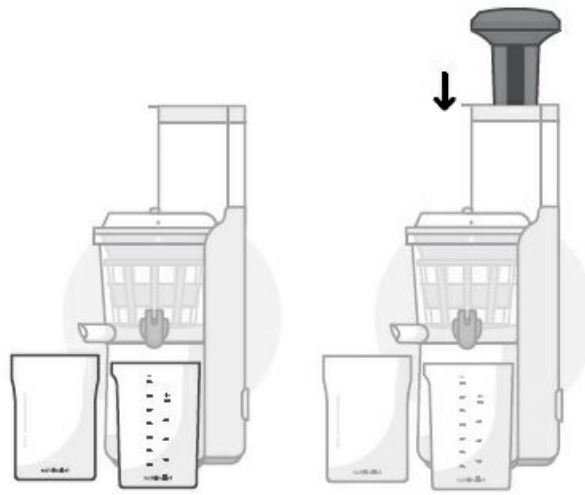
- Place Juice and Pulp Containers under spouts.
- Position the Juice Container below the juice spout, this is on the right side of the Juice Bowl with the spout cover.



- Place the Pulp Container below the pulp spout.

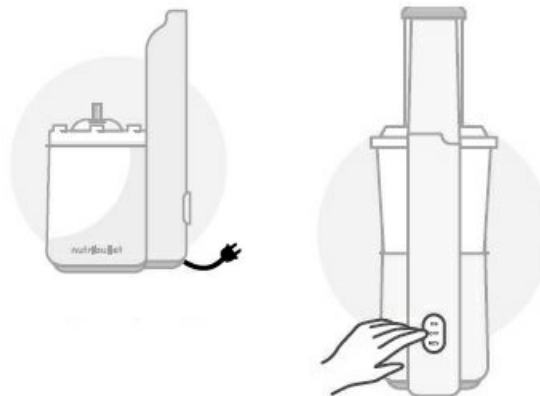
NOTE: The juice and Pulp Containers must be in their proper positions before juicing. During operation, juice will flow into the Juice Container from the juice spout, while pulp will be ejected from the pulp spout and collected by the Pulp Container.

- Put the Food Pusher into the feed chute. The juicer is now ready to operate.

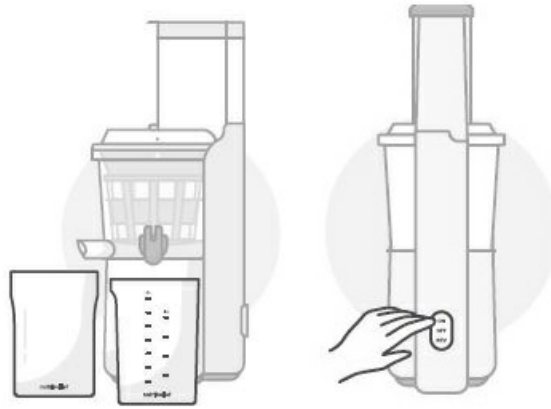


Usage instructions

1. Prepare foods for juicing, and make sure nonjuiceable foods are not used.
 - Remove any hard seeds, pits, and skin – for example, peel and pits should be removed from oranges, lemons, grapefruits, and melons.
 - Cut foods into smaller pieces if needed to fit into the feed chute.
 - Do not attempt to process thick or hard foods that don't contain any juice to extract (for example, it is not recommended to process bananas, avocados, coconuts, or similar hard foods, since these may damage the motor).
2. Before plugging the power cord into an outlet, make sure the power switch is in the "OFF" position.



3. The power switch has three settings. Pressing the power switch to the "ON" position activates the motor and starts making juice; pressing the power switch to "OFF" turns off the machine; and "REV" means reverse rotation, only used when something is stuck and you need to unclog the unit.
4. Make sure the juice and Pulp Containers are in their proper positions.
5. Plug the juicer into the power outlet, then press the power switch to the "ON" position.



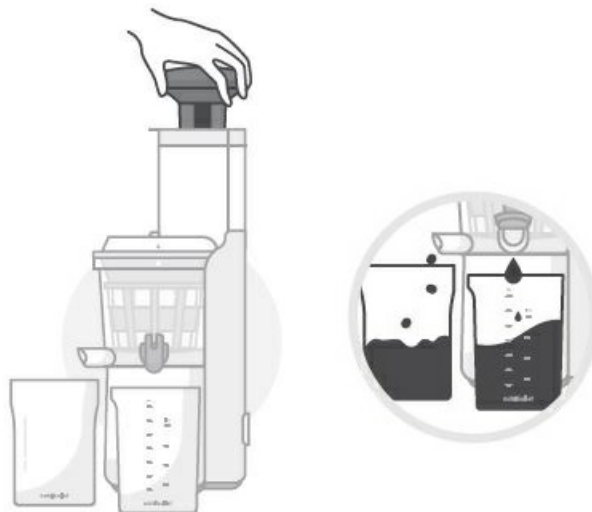
6. Drop the prepared fruits or vegetables into the feed chute and gently push the items down into the grinding assembly, using the Food Pusher.

CAUTION: Never place your finger or hand into the feed chute. Always use the food pusher provided.

- The appliance will start to process the food items. After a few moments, the juice will flow out.

NOTE: For efficient juicing, alternate feeding soft foods and hard foods into the feed chute. For example, follow leafy greens with an apple slice, or orange with a carrot. The harder produce will help with processing the softer produce and extract more juice.

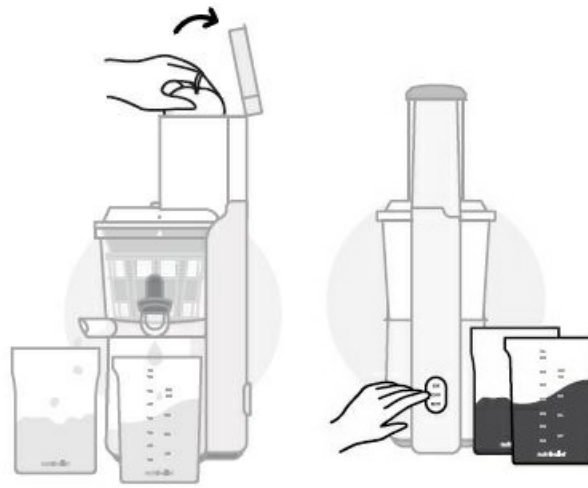
CAUTION: The auger must stop rotating before changing from “ON” to “REV”. Do not turn the power switch from “ON” to “REV” or from “REV” to “ON” without pressing the power switch to “OFF” first. Once the appliance is “OFF” and has stopped running completely then turn the power switch from “OFF” to “REV” or from “OFF” to “ON”.



7. While you are juicing, you may choose to open the wide chute lid, which will open the chute to 3-inches. This will accommodate larger pieces of fruits and vegetables. When the wide chute lid is in the open position, the motor will pause and the Auger will stop rotating. After you have inserted fruits and vegetables into the large chute, close the wide chute lid to restart the motor and continue juicing.
8. Once the Juice Container is full, or all food has been processed, turn the power switch to “OFF”. If you have more food to process, empty the Juice and Pulp Containers before starting a new round of juice extracting.

NOTE: Do not insert too much food to extract at one time. During operation, once the Juice Container is full, you must stop the appliance and empty the Juice and Pulp Containers before the next juicing cycle.

CAUTION: During operation, if the Juice Bowl Lid is disconnected from the Juice Bowl, the motor will stop.



Juicing tips

PROPER PRODUCE PREP

Prepare fruit and veggies before inserting them into the juicer:

- Clean produce properly. Rinse with lukewarm water, produce wash, or water and apple cider vinegar.
- Peel or remove skin as needed. Foods with thick or hard skin must be peeled before being put into the juicer.
- Remove rind from all citrus fruits before juicing.
- Remove large pits and seeds from stone fruit before juicing. Stone fruit may be used only if the seeds or pits have been removed. Fruit with hard cores must be pitted. The cores of peach, plum, mango, and apricot should not be put into the feed chute, to avoid any potential malfunction.
- Chop food items down to the right size – small enough to fit easily into the feed chute, without having to force pieces down with the Food Pusher.
- Foods with less moisture and hard fiber: Cut into slices.
- Leafy vegetables and foods with long, hard fiber (such as celery and kale): Cut the stems into 4 inch pieces and then roll up the leaves well.
- For efficient juicing, alternate feeding soft foods and hard foods into the feed chute. For example, follow leafy greens with an apple slice, or an orange with a carrot. The harder produce will help with processing the softer produce and extract more juice.
- Frozen food items can be put in the juicer after being defrosted.

FEED CHUTE

- Never place your hand, fingers, utensils, or other foreign objects into the feed chute while it is attached to the appliance.
- Do not overload the feed chute. Insert food gradually, at a pace the juicer can keep up with.
- Use only the provided Food Pusher to push food into the feed chute. Never use fingers, utensils, or any other apparatus.
- Never use excessive force to push items into the feed chute.
- After inserting food, ensure all items have moved down the feed chute before adding more.
- If any food gets stuck in the feed chute, use the Food Pusher to move it down the chute.
- For best taste, consume fresh juice and pulp within 72 hours of juicing.

CAUTION: Do not operate the unit without feeding food into it, to avoid damaging the grinding assembly.

FOODS THAT CANNOT BE JUICED:

- Foods that do not contain juice to extract (for example, bananas, avocados, coconuts)
- Stone fruits that have large pits or seeds that have not been removed
- Hard fruits or thick vegetables rich in fiber and starch
- Frozen fruits or vegetables

Troubleshooting

PROBLEM: PARTS ARE DIFFICULT TO DISASSEMBLE

- **Solution:** After finishing juicing, in order to detach and clean parts more easily, continue to run the juicer for about 30 seconds without adding any additional food in order to process any food that might be stuck in the Auger and Juicing Screen.
- **Another tip:** after you are done extracting juice, pouring some water in the feed chute to clean it can help make it easier to disassemble.

PROBLEM: JUICER IS STUCK AND WON'T OPERATE

- **Solution:** If the juicer is stuck and not operable, press the power switch to the "OFF" position. Then press the RESET switch, which is located at the bottom of the base (see image). Next, press and hold the power switch in the "REV" position for a few seconds, then try operating again. If this reverse function does not work, turn off the machine, unplug, and reassemble it, using the instructions given earlier in this guide. After reassembly, try turning on the machine to see if normal function has been restored.

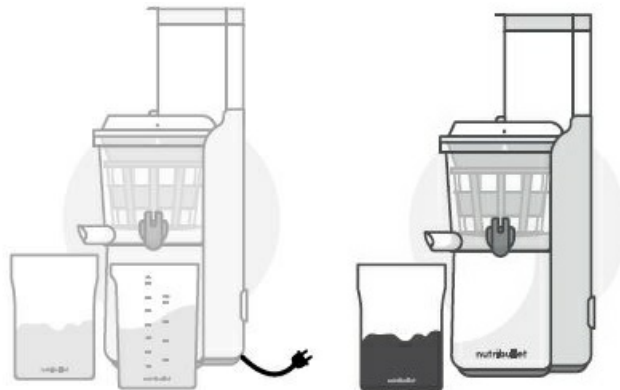


PROBLEM: THE JUICER TURNED OFF IN THE MIDDLE OF JUICING. If the motor overheats, the juicer will turn off.

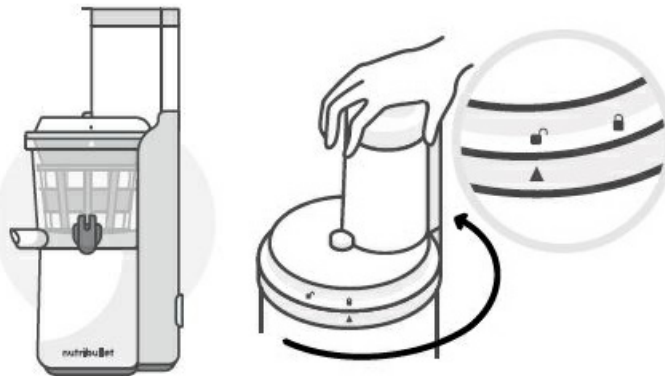
- **Solution:** If the juicer is overheated and stops working, unplug it and allow it to cool down for at least fifteen minutes before attempting to use it again.

Disassembly

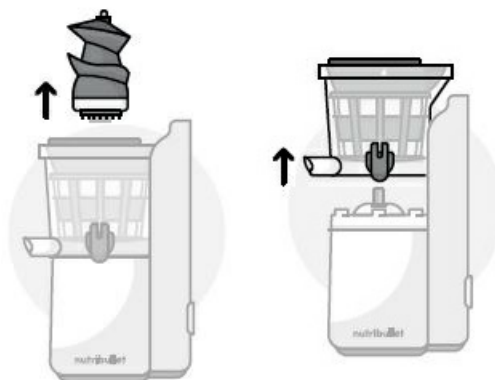
1. Make sure the juicer is powered OFF, cooled down completely, and unplugged before starting disassembly. Ensure that the motor has completely stopped, the grinding assembly has stopped moving, and all moving parts have stopped before disassembling juicer.
2. Remove the Juice Container from under the juice spout. To prevent drips, use the spout cover to close the juice spout.



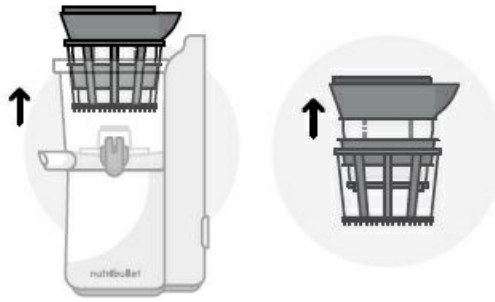
3. Remove the Pulp Container from under the pulp spout.
4. Twist the Juice Bowl lid counter-clockwise to unlock it, then lift to remove it from the top of the juicing jar.



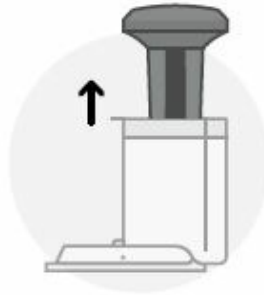
5. Remove the Auger from the bowl.
6. Detach and lift the Juice Bowl (with the Rotating Bowl Brush, Juicing Screen, and Auger still inside) off the top of the base.



7. Remove the Rotating Bowl Brush and Juicing Screen together from the bowl.
8. Detach the Rotating Bowl Brush from Juicing Screen moving it downwards.



9. If the Food Pusher is inside the feed chute, remove it.



Care and maintenance

Cleaning the NutriBullet® Slow Juicer is quick and easy. All parts (except for the base) can be cleaned by simply rinsing with warm soapy water, or most parts are dishwasher safe. Here are some tips for cleaning and best practices.

1. Always make sure the base is unplugged before you begin assembly, disassembly, cleaning, or storage of the unit.
2. Detach and separate the parts of the juicer (see Disassembly section).
3. Empty the Pulp and Juice Containers (store or throw away pulp, store or consume juice).
4. Clean the Juice Bowl Cover, Food Pusher, Auger, Juicing Screen, Rotating Bowl Brush, Juice Bowl, and the juice and Pulp Containers under running water.
CAUTION: Do not use a metal sponge to clean, it will damage the machine.
5. Clean all juicer parts, except for the Motor Base, in warm, soapy water. Or, you can put all parts into the dishwasher except for the Auger.
CAUTION: ALWAYS clean the Auger by hand with warm, soapy water and a soft cloth. The Auger is not dishwasher safe.
6. The Cleaning Brush can be used for better cleaning of the Juicing Screen. The screen can be cleaned completely using the small Cleaning Brush. Use this brush to scrub the Screen under running water. Be sure to properly clean the screen every time you juice. Leftover traces of fruits and vegetables can cause residue buildup in the strainer, which can clog the holes and may prohibit maximum juice extraction.
CAUTION: The Juice Screen is sharp, so handle carefully during cleaning.
7. If you need to clean the pulp spout, first pull the pulp plug out of the pulp spout, then clean it thoroughly with the narrow end of the Cleaning Brush. The narrow end of the Cleaning Brush is sized so that it can fit inside of the pulp spout to help remove pulp that has been stuck. Run water through the bowl and pulp spout to help remove any remaining pulp.
8. Wipe the outside of the base with a clean, damp cloth.
WARNING: Never submerge the Motor Base into water or other liquid.

9. Let all parts dry thoroughly, then assemble and store the appliance in a dry place. The Juice Container can be stored in the Pulp Container.

PRO TIP: Clean your appliance as soon as possible after juicing. If allowed to sit, pulp may dry on one or more parts (such as the Juicing Screen), which can make it more difficult to scrub away residue. If any pulp residue does cake onto any parts of the unit, allow those parts to soak in hot water for 30 minutes, which should soften the residue and make it easier to remove.

Replacement parts

To order additional parts and accessories, please visit our website at nutribullet.com/shop/accessories or feel free to contact Customer Service: 1 (800) 523-5993.

How to store

- To save juice for future use, store it covered in the Juice Container in your refrigerator.
- You can also store pulp the same way, in the Pulp Container. For best taste, consume juice and pulp within 72 hours. Store juicer in a safe dry place where parts will not be damaged and won't cause harm. When moving the juicer, always grasp it by the base (not the Juice Bowl or Juice Bowl Cover).

WARRANTY

NutriBullet® Slow Juicer one-year limited warranty.

LIMITED WARRANTY FOR NUTRIBULLET®

NutriBullet's limited warranty obligations are confined to the terms set forth below:

- NutriBullet, LLC ("NutriBullet") warrants this NutriBullet® against defects in materials and workmanship for a period of one year from the date of original retail purchase. This limited warranty is valid only in the country in which the product is purchased and comes with the product at no extra charge, however shipping and processing fees will be incurred for returns, replacements and or refunds.
- If a defect exists, and NutriBullet® is obligated under this limited warranty, at its option NutriBullet® will (1) repair the product at no charge, using new or refurbished replacement parts, (2) exchange the product with a product that is new or that has been manufactured from new or serviceable used parts and is at least functionally equivalent to the original product, or (3) refund the purchase price of the product. A replacement product assumes the remaining warranty of the original product. A repaired product has a one-year warranty from the date of repair. When a product or part is exchanged, any replacement item becomes your property and the replaced item becomes NutriBullet's property. When a refund is given, your product becomes NutriBullet's property.

OBTAINING WARRANTY SERVICE

- For limited warranty service, simply call our customer service department at 1 (800) 523-5993 or contact us via email from our website at nutribullet.com; click the Contact Us link, fill out and submit the customer contact form, and we will be glad to help you.

- When you contact our customer service department, you will be asked to provide your name, address, telephone number, and proof of the original purchase (receipt) containing a description of the product(s), purchase date, and the appropriate NutriBullet® serial number(s). Before sending your product for limited warranty service, please make sure to keep a copy of all relevant documents for your files (receipt, etc.). It is always recommended to purchase product insurance and tracking services when sending your product for service. Remember, shipping and processing fees will be incurred and are not covered by the one-year limited warranty.

EXCLUSIONS & LIMITATIONS

- This NutriBullet® One-Year Limited Warranty applies only to NutriBullet® products distributed by or for NutriBullet that can be identified by the “NutriBullet” trademark, trade name, logo, and bar code. This NutriBullet Slow Juicer™ One-Year Limited Warranty does not apply to any other products that may appear to be authentic, but were not distributed/sold by NutriBullet. Normal wear and tear is not covered by this limited warranty.
- This limited warranty applies to consumer use only, and is void when the product is used in a commercial or institutional setting.
- This limited warranty extends only to the original consumer purchaser and is not transferable. In addition, proof of purchase must be demonstrated.
- Repair or replacement of the product (or, if repair or replacement is not feasible, a refund of the purchase price) is the exclusive remedy of the consumer under this limited warranty. NutriBullet shall not be liable for any incidental or consequential damages for breach of this limited warranty or any implied warranty on this product.
- This limited warranty gives you specific legal rights, and you may also have other rights which vary from state to state. NutriBullet is not liable for any damage to products not covered by this warranty (e.g., cups, book, User Guide).
- This limited warranty does not apply: (a) to damage caused by accident, abuse, misuse, or misapplication; (b) to damage caused by improper maintenance (including unauthorized parts service); (c) to a product or a part that has been modified in any way; (d) if any NutriBullet® serial number or trademark has been removed or defaced; and/or (e) if the product has been used with an adapter/converter and/or (f) if the product has been used for commercial or industrial purposes.
- THIS LIMITED WARRANTY AND THE REMEDIES SET FORTH ABOVE ARE EXCLUSIVE AND IN LIEU OF ALL OTHER WARRANTIES, REMEDIES AND CONDITIONS, WHETHER ORAL OR WRITTEN, EXPRESS OR IMPLIED. NUTRIBULLET SPECIFICALLY DISCLAIMS ANY AND ALL IMPLIED WARRANTIES, INCLUDING, WITHOUT LIMITATION, WARRANTIES OF MERCHANTABILITY AND FITNESS FOR A PARTICULAR PURPOSE. IF NUTRIBULLET CANNOT LAWFULLY DISCLAIM IMPLIED WARRANTIES UNDER THIS LIMITED WARRANTY, ALL SUCH WARRANTIES, INCLUDING WARRANTIES OF MERCHANTABILITY AND FITNESS FOR A PARTICULAR PURPOSE ARE LIMITED IN DURATION TO THE DURATION OF THIS LIMITED WARRANTY. No NutriBullet® reseller, agent, or employee is authorized to make any modification to this warranty.
- NUTRIBULLET IS NOT RESPONSIBLE FOR DIRECT, SPECIAL, INCIDENTAL OR CONSEQUENTIAL DAMAGES RESULTING FROM ANY BREACH OF WARRANTY OR CONDITION, OR UNDER ANY OTHER LEGAL THEORY, INCLUDING BUT NOT LIMITED TO LOST PROFITS, DOWNTIME, GOODWILL, DAMAGE TO OR REPLACEMENT OF EQUIPMENT AND PROPERTY. NUTRIBULLET SPECIFICALLY DOES NOT REPRESENT THAT IT WILL BE ABLE TO REPAIR ANY PRODUCT UNDER THIS LIMITED WARRANTY.

- Some states and provinces do not allow the exclusion or limitation of incidental or consequential damages or exclusions or limitations on the duration of implied warranties or conditions, so the above limitations or exclusions may not apply to you. This warranty gives you specific legal rights, and you may also have other rights that vary by state or province.

Warranty registration

- Please visit nutribullet.com/warranty-registration or call 1 (800) 523-5993 to register your new NutriBullet® Slow Juice. You will be asked to enter the Serial Number* of your product, along with the purchase date and place of purchase.
- The registration will enable us to contact you in the unlikely event of a product safety notification. By registering your product, you acknowledge you have read the instructions and understood the warnings as set forth in the accompanying instructions.
- To find the serial number, check under the Motor Base. If you cannot find the serial number, call customer service for assistance.



1 (800) 523-5993 | nutribullet.com

NUTRIBULLET® is the registered trademark of CAPBRAN HOLDINGS, LLC Copyright © 2021 CAPBRAN HOLDINGS, LLC. Distributed by CAPITAL BRANDS DISTRIBUTION, LLC. LOS ANGELES, CA 90025 USA All Rights Reserved. MADE IN CHINA Illustrations may differ from the actual product. We are constantly striving to improve our products, therefore the specifications contained herein are subject to change without notice.
210216_NBJ50300

FREQUENTLY ASKED QUESTIONS

What sets the NUTRIBULLET NBJ50300 Slow Masticating Juicer Machine apart from other juicers?

The NUTRIBULLET NBJ50300 features a slow masticating mechanism that ensures maximum extraction of nutrients from fruits and vegetables, providing healthier juices.

What is the price of the NUTRIBULLET NBJ50300 Slow Masticating Juicer Machine?

The NUTRIBULLET NBJ50300 Slow Masticating Juicer Machine is priced at \$147.41, offering a premium option for those seeking high-quality juicing.

What are the dimensions of the NUTRIBULLET NBJ50300 Slow Masticating Juicer Machine?

The NUTRIBULLET NBJ50300 Slow Masticating Juicer Machine measures 6.25 inches in diameter, 7 inches in width, and 17 inches in height, providing a compact yet functional design.

What is the capacity of the NUTRIBULLET NBJ50300 Slow Masticating Juicer Machine?

The NUTRIBULLET NBJ50300 Slow Masticating Juicer Machine has a capacity of 1.5 pounds, allowing for juicing a substantial amount of produce in one go.

What material are the blades of the NUTRIBULLET NBJ50300 Slow Masticating Juicer Machine made of?

The blades of the NUTRIBULLET NBJ50300 Slow Masticating Juicer Machine are made of stainless steel and alloy steel, ensuring durability and efficient juicing performance.

Who is the manufacturer of the NUTRIBULLET NBJ50300 Slow Masticating Juicer Machine?

The NUTRIBULLET NBJ50300 Slow Masticating Juicer Machine is manufactured by NutriBullet, a reputable brand known for its innovative kitchen appliances.

Is the NUTRIBULLET NBJ50300 Slow Masticating Juicer Machine heavy?

Yes, the NUTRIBULLET NBJ50300 Slow Masticating Juicer Machine weighs 11 pounds, indicating a sturdy build for stable juicing operations.

What is the item model number of the NUTRIBULLET NBJ50300 Slow Masticating Juicer Machine?

The item model number of the NUTRIBULLET NBJ50300 Slow Masticating Juicer Machine is NBJ50300, facilitating easy identification and compatibility with accessories or replacement parts.

How can I address issues with excessive pulp in the juice produced by my NutriBullet NBJ50300 Slow Masticating Juicer Machine?

To minimize pulp in the juice, try adjusting the settings on your juicer. You may also need to clean the juicing components thoroughly, as pulp buildup can affect the juicer's performance.

What should I do if my NutriBullet NBJ50300 Slow Masticating Juicer Machine is leaking during operation?

Check to ensure that all parts of the juicer are properly assembled and tightened. Inspect the juicer's seals and gaskets for any signs of damage or wear. Additionally, avoid overloading the juicer with too much produce at once, as this can lead to leakage.

How can I troubleshoot if my NutriBullet NBJ50300 Slow Masticating Juicer Machine is producing less juice than usual?

If your juicer is producing less juice than usual, check to make sure that the fruits and vegetables you are using are fresh and properly prepared. You may also need to clean the juicer's components, as a buildup of pulp or debris can impede the juicing process.

What should I do if my NutriBullet NBJ50300 Slow Masticating Juicer Machine is making unusual noises during operation?

Unusual noises during operation can indicate that there is an issue with the juicer's motor or other internal components. Turn off the juicer and unplug it from the power source, then inspect the juicer for any visible signs of damage or obstruction.

How can I prevent clogging in my NutriBullet NBJ50300 Slow Masticating Juicer Machine?

To prevent clogging, be sure to cut your fruits and vegetables into smaller pieces before juicing them. Additionally, clean the juicer's components thoroughly after each use to remove any pulp or debris that could potentially cause clogs.

What should I do if my NutriBullet NBJ50300 Slow Masticating Juicer Machine stops mid-operation?

If your juicer stops mid-operation, first turn it off and unplug it from the power source. Check the juicer for any signs of obstruction or damage, and clear any clogs that you find. Allow the juicer to cool down for a few minutes before attempting to restart it.

How can I address issues with juice overflow in my NutriBullet NBJ50300 Slow Masticating Juicer Machine?

If your juicer is overflowing with juice, try reducing the amount of produce you are juicing at one time. You may also need to adjust the settings on your juicer to slow down the juicing process and prevent overflow.

VIDEO – PRODUCT OVERVIEW



<https://www.manualslib.com/manual/421414/NutriBullet-NBJ50300-Slow-Masticating-Juicer-Machine.html>
[Download the PDF link: NUTRIBULLET NBJ50300 Slow Masticating Juicer Machine User Guide](#)
[Slow-Masticating-Juicer-Machine-User-Guide.mp4](#)

REFERENCE: [NUTRIBULLET NBJ50300 Slow Masticating Juicer Machine User Guide-wiki](#)

References

- [User Manual](#)

