

nutribullet

nutribullet FLIP
Portable Blender



nutribullet FLIP Portable Blender User Guide

[Home](#) » [nutribullet](#) » nutribullet FLIP Portable Blender User Guide 

Contents

- 1 nutribullet FLIP Portable Blender
- 2 Product Usage Instructions
- 3 GENERAL USE AND SAFETY
- 4 LITHIUM-ION BATTERIES
- 5 PRODUCT SAFETY
- 6 What's included.
- 7 Assembly guide.
- 8 LED indicators.
- 9 Using the nutribullet Flip.™
- 10 Using the to-go lid.
- 11 Troubleshooting.
- 12 Care & maintenance.
- 13 Documents / Resources
 - 13.1 References
- 14 Related Posts

nutribullet

nutribullet FLIP Portable Blender



Product Specifications:

- **Product Name:** Nutribullet FlipTM
- **Intended Use:** Household Use Only
- **Usage Restrictions:** Do not blend hot, warm, carbonated, or effervescent ingredients. Do not blend contents for more than one minute.

Product Usage Instructions

Personal Safety:

Warning: Do not blend hot, warm, carbonated, or effervescent ingredients as it may cause pressure build-up and potential bodily harm.

Always remove utensils and non-food items from the cup before operating to prevent injuries or damage.

Avoid exposing the Nutribullet FlipTM to extreme temperatures to prevent damage to components.

Cup Safety:

Proper cup use is crucial for safe operation. Failure to follow cup usage instructions may result in injuries or damage to the unit.

Blade Safety:

Warning: Blades are sharp. Handle with care to avoid bodily injury.

Blade Care Caution: Discontinue use if the blade is bent or damaged.

Surrounding Safety:

Avoid using the Nutribullet FlipTM while engaging in activities that require your undivided attention to prevent accidents.

General Use and Safety:

Warning: Follow all safety precautions mentioned in the user manual to ensure safe operation of the Nutribullet FlipTM.

Frequently Asked Questions (FAQ):

1. Q: Can I blend hot liquids in the Nutribullet Flip™?

A: No, it is advised not to blend hot, warm, carbonated, or effervescent ingredients to prevent potential hazards.

2. Q: How long can I blend ingredients in one cycle?

A: Do not blend contents for more than one minute in a single cycle to avoid over-pressurizing the cup.

3. Q: Can I use the Nutribullet Flip™ in a vehicle or while operating machinery?

A: No, it is not recommended to use the Nutribullet Flip™ while driving, operating machinery, or engaging in activities requiring full attention.



WARNING! To reduce the risk of serious injury, read the User Guide before operating your nutribullet Flip™. Save these instructions. Be sure anyone who uses the nutribullet® knows how to do so safely.

Important safeguards.

When operating your nutribullet Flip™, remember: SAFETY COMES FIRST.

WARNING! To avoid the risk of serious injury, death, property damage, or damage to your device, carefully read all instructions before operating your nutribullet Flip™. When using any electrical appliance, basic safety precautions should always be observed, including the following important information. READ CAREFULLY AND THOROUGHLY BEFORE OPERATING.

If you let anyone else use your nutribullet Flip™, make sure that they understand the health and safety information in this User Guide, as well as any additional safety or usage instructions provided. Each person using a device should read the User Guide completely, and become familiar with the safe operation of the unit.

Save these instructions!

FOR HOUSEHOLD USE ONLY

READ ALL INSTRUCTIONS CAREFULLY AND THOROUGHLY BEFORE OPERATING.

PERSONAL SAFETY:

WARNING! DO NOT BLEND HOT, WARM, CARBONATED, OR EFFERVESCENT INGREDIENTS.

Such use may pressurize the Cup during blending, potentially causing the Lid to open forcefully, or the Cup and Motor Base, Blade, and Lid to separate from the Cup. This could expel hot ingredients and cause exposure to the blade, potentially resulting in bodily injury and/or property damage.

Only blend room-temperature or refrigerated ingredients (70°F/21°C or cooler).

Carbonated and effervescent ingredients (e.g., soda, baking powder, baking soda, yeast, some batters, cake mix, dry ice, or other things that become bubbly) release gasses that increase pressure within the Cup when blending. Some protein powders also include effervescent ingredients. Always check your ingredients before blending.

Remove all utensils and non-food items from Cup before operating to prevent bodily injury, or damage to the blade or Cup.

Do not expose your nutribullet Flip™ to extreme temperatures or leave in the freezer or refrigerator, as this can damage the batteries, seals, and other components.

WARNING! DO NOT BLEND CONTENTS FOR MORE THAN ONE MINUTE. DO NOT RUN CONSECUTIVE BLENDING CYCLES THAT EXCEED ONE MINUTE TOTAL.

The friction created by the blending process builds heat inside the Cup. Blending continuously for more than one minute increases this risk of pressurization. Consecutive blending cycles that exceed one minute total may over-pressurize the Cup, causing the Lid to open forcefully, or the Cup and Motor Base, Blade, and Lid to separate from the Cup. This could expel hot ingredients and cause exposure to the blade, potentially resulting in bodily injury and/or property damage.

- Do not open the Lid or remove the Motor Base, Blade, and Lid from the Cup until the blades have come to a complete stop. Blades can still activate when the Motor Base, Blade, and Lid is opened.

- DO NOT insert finger or any object in the sip/straw hole while the motor is activated and the blades are spinning. Failure to follow these precautions may result in bodily injury, property damage, or damage to your unit.

WARNING! DO NOT LEAVE BLENDED FOODS IN A SEALED CUP FOR PROLONGED PERIODS OF TIME. If left inside a sealed Cup, a blended mixture may spoil and ferment. During fermentation, the mixture may release gases that build pressure inside the Cup. Over-pressurization may cause the Lid to open forcefully, or the Cup and Motor Base, Blade, and Lid to separate from the Cup. This could cause exposure to the blade, potentially resulting in serious bodily injury, property damage, or damage to your unit. Do not leave blended ingredients in the sealed Cup for a prolonged period of time.

To release pressure in the Cup, open the Lid to the drinking spout pointing away from your face and body. Always exercise caution, being mindful of escaping steam, gases, or foodstuffs that may splatter or spray out.

CUP CAUTION:

- Always use caution when opening the Lid. Open the Lid slowly with the opening pointed away from your face and body, being mindful of any splattering that may occur.

CUP SAFETY:

Proper Cup use is important for the safe operation your nutribullet Flip™. Using the Cup inconsistent with these instructions may result in bodily injury, property damage, or damage to your unit.

- Use only nutribullet® attachments/accessories specifically designed for your nutribullet Flip™. Always use genuine nutribullet® replacement parts and accessories. Aftermarket parts are not made to nutribullet® specifications and may damage your unit or cause serious injury.
- The manufacturer does not recommend the use of attachments, including canning jars, with the nutribullet Flip™. Attempting to use attachments not included with the product's configuration may result in injury to persons.
- ALWAYS ensure the Cup is securely tightened and locked onto the Motor Base, Blade, and Lid before blending. The motor will not turn on unless the Cup is situated in the locked position.
- ONLY operate the unit with the Lid cover snapped in place.
- Never operate your nutribullet Flip™ while the Cup is empty.
- DO NOT exceed the MAX line. Exceeding the MAX line can jam the blade or cause leakage.
- NEVER remove the Cup or open the Lid while the unit is in operation.
- DO NOT overfill the Cup with ice, as this may impede blade rotation, which can result in damage to the unit or injury. Always be sure to add a sufficient amount of liquid to the Cup before blending.
- Only use genuine nutribullet® parts. Order replacement parts from bulletbrands.com.au/bulletbrands.co.nz.

BLADE SAFETY:

WARNING! BLADES ARE SHARP! HANDLE WITH CARE TO AVOID BODILY INJURY.

- Do not touch the sharp edges of the blades.
- Do not place hands or fingers near the blades when attaching the Cup to the Motor Base, Blade, and Lid.
- Handle with care when washing the blade by hand.
- Always ensure the power is off and the charger is unplugged when assembling, disassembling, or cleaning the blade or Motor Base, Blade, and Lid.
- Do not store the Motor Base, Blade, and Lid with the blades exposed. Always cover the blade with either the

Cup or Blade Cover.

BLADE CARE CAUTION:

WARNING! DISCONTINUE USE IF THE BLADE IS BENT OR DAMAGED.

- Routinely inspect the blades for damage, and if detected, contact Customer Service for blade replacement.

SURROUNDING SAFETY:

WARNING! DO NOT USE YOUR NUTRIBULLET FLIP™ WHILE DRIVING, OPERATING MACHINERY, CYCLING, WALKING, OR ENGAGING IN OTHER ACTIVITIES THAT REQUIRE YOUR UNDIVIDED ATTENTION.

- Do not place your nutribullet Flip™ on uneven or unstable surfaces.
- Do not dry your device with a hair dryer, clothes dryer, conventional oven, or microwave oven. If your device becomes wet, gently wipe the exterior with a clean, dry cloth.
- Do not use your device near water or in wet, rainy, or snowy conditions.
- Do not use your device near an open flame or other heat source; near areas of excessive dirt, dust, oil, or chemicals; or in direct sunlight.
- Do not expose your nutribullet Flip™ to extreme temperatures, it can cause the batteries to rupture or explode.

GENERAL USE AND SAFETY

WARNING! FAILURE TO FOLLOW ALL INSTRUCTIONS REGARDING YOUR NUTRIBULLET FLIP™ MAY RESULT IN PROPERTY DAMAGE, SERIOUS PERSONAL INJURY, OR DEATH.

- This appliance is not intended for use by persons (including children) with reduced physical, sensory, or mental capabilities; or lack of experience and knowledge, unless they are closely supervised and instructed concerning the use of the appliance by a person responsible for their safety. Close supervision is necessary when any appliance is used by or near children. Children should be supervised to ensure they do not play with the appliance.
- Periodically inspect your nutribullet Flip™ components for damage or wear that may impair proper functioning or create a safety hazard.
- Be aware of possible hazards when charging, using, or storing your nutribullet Flip™.
- Do not use this blender for anything other than its intended use.
- Avoid contact with moving parts. Do not attempt to defeat any safety interlock mechanisms.
- Do not insert anything other than the appropriate charger into the USB-C port. Do not allow dust, dirt or moisture to accumulate inside the port.
- Do not crush, drop, or damage the Motor Base, Blade, and Lid. Do not operate if this component is damaged in any manner. Contact Customer Service for assistance at AU: 1300 285 538 / NZ: 0800 232 633.

WARNING! MODIFICATION, IMPROPER USE, AND FAILURE TO FOLLOW INSTRUCTIONS CAN INCREASE THE RISK OF PROPERTY DAMAGE, SERIOUS PERSONAL INJURY, OR DEATH.

- Only use the Charging Cable and Power Supply that came with your unit.
- Do not charge this appliance with any other charger or attempt to use the Power Supply on any other product.
- NEVER USE UNAPPROVED POWER SOURCES OR RAPID CHARGERS.
- To avoid the risk of electrical shock, fire, or bodily injury, DO NOT charge or use in wet conditions, or immerse

the Charging Cable, Power Supply, or Motor Base, Blade, and Lid in water or other liquids.

- Do not operate the unit if there is damage to the Charging Cable or Power Supply, if there has been an appliance malfunction, or if the Motor Base, Blade, and Lid has been dropped or damaged in any manner. Contact Customer Service for assistance at AU: 1300 285 538 / NZ: 0800 232 633.
- Always UNPLUG the nutribullet Flip™ and allow the unit to completely SHUT DOWN when not in use, and BEFORE assembling, disassembling, changing accessories, or cleaning. Your nutribullet Flip™ will SHUT DOWN automatically when left undisturbed for 90 seconds.
- Do not charge your device around flammable materials, on your bed or couch, or on top of any type of paper.
- Using incompatible parts or aftermarket accessories may damage your nutribullet Flip™ or create safety hazards that may cause personal injury or property damage. **WARNING! FAILURE TO TAKE THE FOLLOWING PRECAUTIONS CAN RESULT IN SERIOUS PERSONAL INJURY, DEATH FROM ELECTRIC SHOCK OR FIRE, OR DAMAGE TO YOUR DEVICE.**

WARNING! DO NOT USE THE POWER SUPPLY WITH A VOLTAGE CONVERTER DEVICE OR ADAPTER.

- Do not use non-standard power sources, such as generators or inverters. Use only AC power provided by a standard wall outlet or automobile lighter port.
- Exposed device cables and cords pose a potential tripping hazard. Arrange all cables and cords so that people and pets are not likely to trip over or accidentally pull on them as they move around or walk through the area.
- Do not let the Charging Cable hang over the edge of a table or counter.



LITHIUM-ION BATTERIES

Your nutribullet Flip™ contains rechargeable lithium-ion batteries. The batteries are not replaceable and must be recycled or disposed of properly. Consult your local council for information regarding available recycling and/or disposal options. Improper disposal may result in injury, death, or property damage as a result of fire, overheating, or explosion.

- The motor base is equipped with a Lithium-Ion battery, and it is very important to never dispose of it in regular household waste. Lithium-Ion batteries in compacting rubbish trucks pose a risk of ignition.
- Opening and/or repairing or attempting to replace the batteries to your device can cause electric shock, device damage, fire, and personal injury, or property damage.
- Do not expose the Motor Base containing the Lithion-Ion battery pack to fire or excessive heat. Exposure to fire or temperatures above 130°C may damage the batteries and cause an explosion.
- Do not recharge your nutribullet Flip near a fire, heat source, or in extremely hot conditions.
- Recommended storage and ambient charging temperature: 10°C–40°C.
- Do not use your unit in any area with a potentially explosive atmosphere (e.g., fueling areas or fuel service stations, below decks on boats or other vessels, fuel and/or chemical transfer and storage facilities, and areas where flammable chemicals or particles, such as grain dust or metal powders have collected in the air). In such areas, sparks can occur and cause an explosion or fire.
- Do not use your unit if the Motor Base is overheated, has an odor, is bulging, or changes in color/shape.

PRODUCT SAFETY

- NEVER PLACE THE MOTOR BASE, BLADE, AND LID IN THE DISHWASHER.
- Do not blend stone fruit in this appliance unless pits/seeds have been removed. Hard ingredients may damage the blade.
- The blades may stop turning if the Cup is overfilled or if there is an insufficient amount of liquid in the Cup. If this occurs, please refer to the Errors section in this User Guide.
- Do not attempt to clean the Motor Base, Blade, and Lid by immersing it in water or other cleaning liquids. Follow the instructions in the Care & Maintenance section on page 20.
- Only the Cup and plastic accessories of the nutribullet Flip™ are dishwasher-safe. If you choose to clean these in the dishwasher, only place them on the top rack of the dishwasher and do not run the heat or sanitizing cycle.
- Do not overload your wall outlet. Confirm that it is rated to handle the total current (in amps) drawn by your device (as indicated on your Power Supply Unit) and any other devices using the same circuit.
- Never use a damaged Power Supply, or one that has been dropped or received a sharp impact.
- Do not charge in an area of extreme heat or cold.
- Always unplug the Power Supply when not in use.

CABLE AND CORD SAFETY:

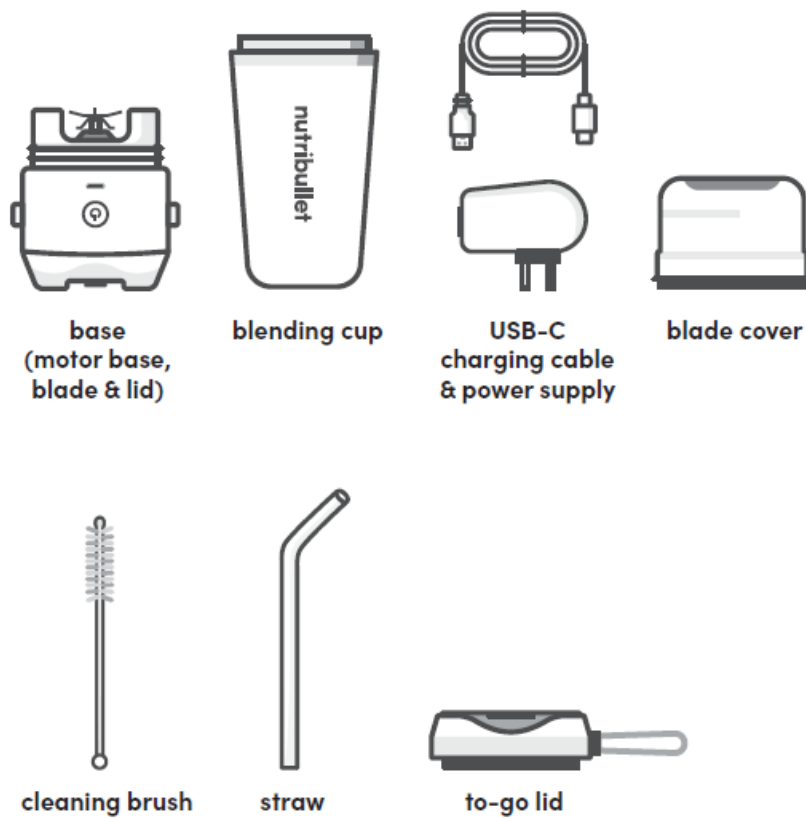
WARNING! USE ONLY THE CHARGING CABLE THAT CAME WITH YOUR NUTRIBULLET FLIP™ TO CHARGE.

- Inspect your Power Supply and cables regularly.
- Do not wrap or wind the Charging Cable too tightly when storing. Do not bend or crease the Charging Cable when using.
- When positioning your device or Power Supply, ensure that the cables are not bent sharply and that the connectors are not pushed against a wall or hard surface.
- Do not allow pets or children to bite or chew on cables and cords.
- Always disconnect the Power Supply from the outlet by pulling on the plug portion of the block. Never pull on the Charging Cable to remove the Power Supply from the wall.
- Do not let the Charging Cable touch hot surfaces or any extreme heat source, or become knotted, tangled, or frayed.
- Do not grab or carry your device by the Charging Cable.
- The recommended storage and ambient charging temperature range for this device is between 50°F–104°F (10°C–40°C).

Save these instructions!

Thank you for purchasing the nutribullet Flip™.

What's included.

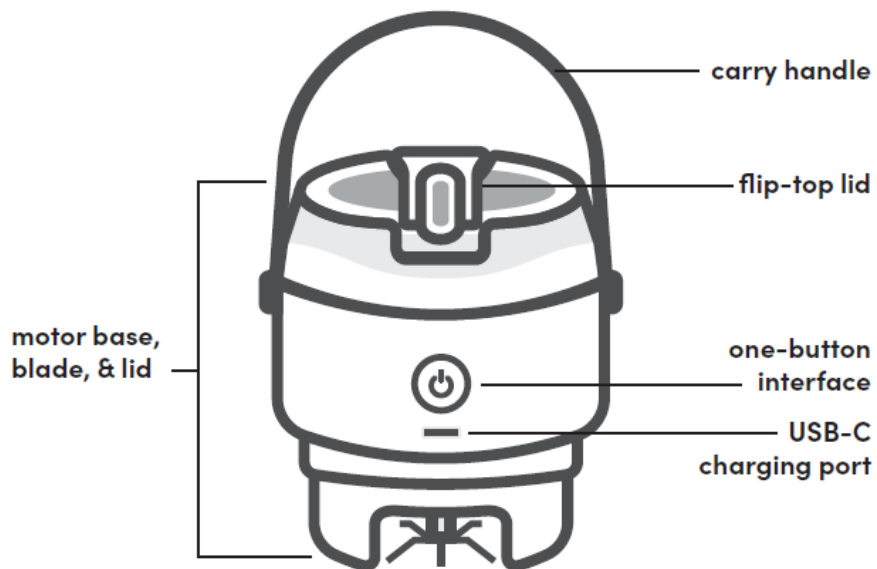


Before first use.

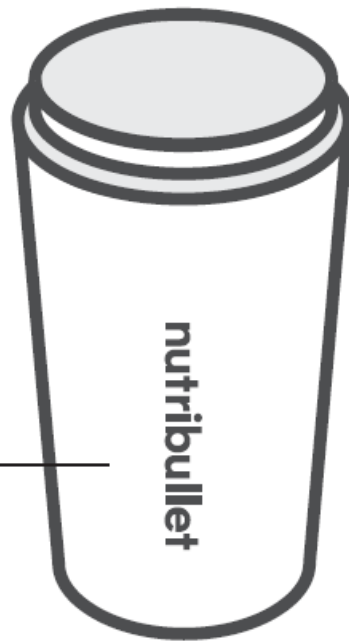
Remove all packaging materials, stickers, and the like, and clean your unit with care according to the instructions detailed in the Care & Maintenance section (pg. 20).

Charge the unit for at least 2 hours using the provided USB-C Charging Cable and Power Supply.

Assembly guide.



590ml stainless
steel insulated
blending cup*



WARNING! DO NOT exceed the MAX fill capacity. 590ml total Cup capacity. 475ml MAX fill line capacity.

LED indicators.

The nutribullet Flip™'s indicator has six LED light bars that appear white, yellow, red, or green according to the unit's operational status. The meaning of each display is detailed below.

Charging.



LED light bars



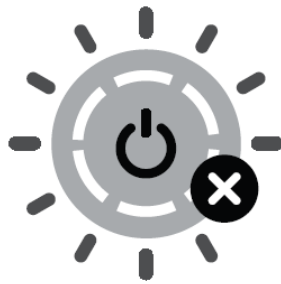
NO POWER:

All LEDs off.

PLUGGED IN:

When plugged in to charge, the color of LED indicates charge status.

- SOLID GREEN: full charge.
- FLASHING GREEN: ready for normal use.
- FLASHING YELLOW: low charge, can run several cycles.
- FLASHING RED: needs charging, do not use to blend.



DURING USE:

- FLASHING YELLOW: use error, refer to pg. 19 to diagnose issue
- FLASHING RED: functional error. Immediately discontinue use of your blender. Refrain from pressing the Power Button for at least 90 seconds to allow the unit to shut down automatically, then refer to the troubleshooting guide on page 19 for details.

Settings.



WAKE:

Press the Power button once to wake up your blender.

The LED ring will illuminate in a clockwise direction. When the ring is fully illuminated, the unit is ready to blend.

- WHITE: ready for normal use.
- YELLOW: low charge, can run several cycles.
- RED: needs charging, do not use.

BLEND MODE:



Press the Power button to start a 30-second blend cycle.
White LEDs circulate clockwise during the blending cycle.

SLEEP MODE:



After 90 seconds of inactivity, your blender will automatically SHUT DOWN/go into sleep mode. When the ring light is off, the blender is powered off.

Using the nutribullet Flip.™



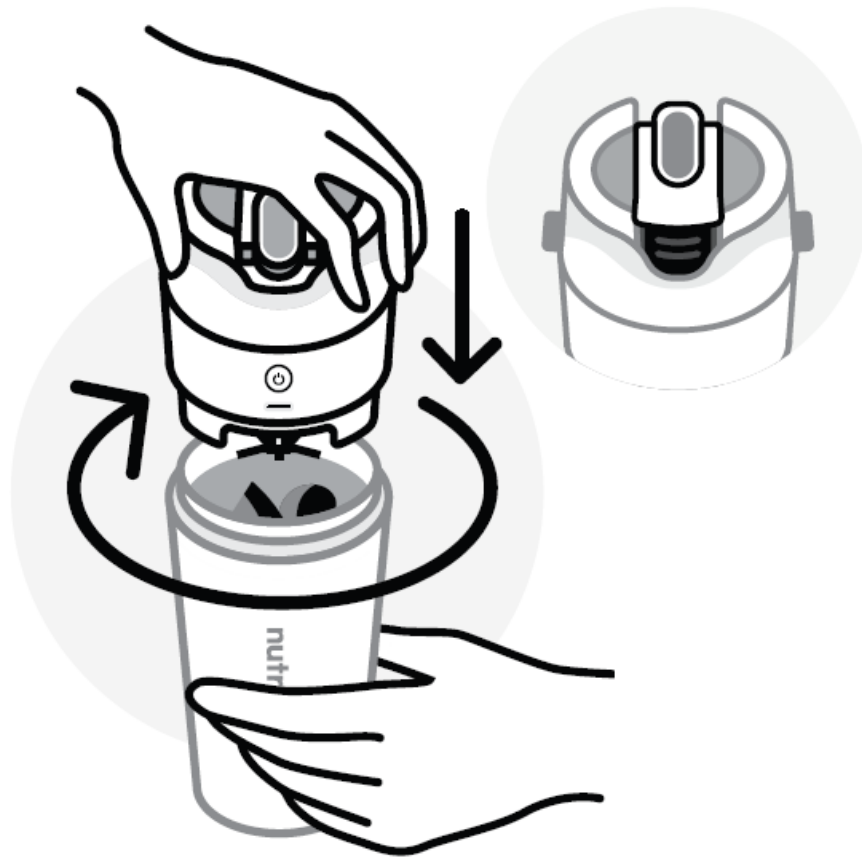
1. Place the Blending Cup on a clean, dry, and level surface.



2. Twist off the Motor Base, Blade, and Lid and add ingredients.

NOTE: Make sure you don't overfill the Cup. Follow the minimum liquid and MAX fill marks on the Cup. When adding ice, it should not exceed 25% of the Cup's total volume. Always add a sufficient amount of liquid ingredients.

WARNING! NEVER open the Flip-Top Lid or attempt to place anything into the sip hole while the motor is running to prevent injury or damage.



3. Twist the Motor Base, Blade, and Lid back onto the Blending Cup. Make sure the Flip-Top Lid is snapped closed and sealed.



4. With the blender right side-up (Motor Base, Blade, and Lid on top), press the Power Button once to wake up the blender. Wait about 1 second for the LED light ring to fully illuminate.

NOTE: The LED light ring will fully illuminate white if the Motor Base, Blade, and Lid is properly installed. If the Motor Base, Blade, and Lid is installed incorrectly, the LED light ring will flash yellow.



5. When ready, press the Power Button again to begin a 30-second blending cycle.

NOTE: To prevent blade blockage or stalling, start the blending cycle with the blender right-side-up (Motor Base, Blade, and Lid on top).



6. Once blending begins, flip your blender upside- down (Motor Base, Blade, and Lid on bottom) so the ingredients make contact with the blade. Place the blender on a clean, dry, and level surface until blending is complete.

NOTE: If you want to Pulse your ingredients or stop the blending cycle early, press the Power Button during the blending cycle.



7. Once blending is complete, flip your blender so the Motor Base, Blade, and Lid is right-side-up and open the Flip-Top Lid to enjoy your blend.



8. Use the Carry Handle to take your blend on the go.

WARNING! NEVER open the Flip-Top Lid or attempt to place anything into the sip hole while the motor is running to prevent injury or damage.

Using the to-go lid.

Your nutribullet Flip™ also comes with a twist-on To-Go Lid that you can swap with the Motor Base, Blade, and Lid. The To-Go Lid offers two ways to enjoy your blend: through a sipping spout at the front of the Lid, or through the straw opening in the center of your Lid.



1. Remove, clean, and Cover Mdry theotor Mot Base/Lid with the blade cor Base, Bover before stlade, oring. and Lid. Cover with the Blade Cover before storing.



2. Twist on the To-Go Lid.



3. To open the sipping spout, unsnap the cover fl ap from the front of the To-Go Lid, then fl ip it all the way over, snapping it into place at the opposite side of the To-Go Lid.



4. The nutribullet® tab at the center of the To-Go Lid covers the straw opening. To reveal the opening, keep the sipping spout cover flap closed and slide the center tab towards the back of the To-Go Lid.

NOTE: The To-Go Lid is not leak-proof and will not prevent blends from seeping or spilling out of the Cup. Be

sure to always keep your Cup upright when using the To-Go Lid.

NOTE: DO NOT insert/use straw when motor is on.

Troubleshooting.

WARNING!

Before first use, review all warnings and caution statements in the important safeguards section (pages 1-6).

ALWAYS use caution when opening the Flip-Top Lid. ALWAYS power off unit before opening the Flip-Top Lid Cap slowly, being mindful that the spraying of contents may occur.

NEVER try to operate your nutribullet Flip™ while driving or while engaging in other situations that require your undivided attention.

NEVER use a rapid charger or a higher-wattage charger. Use only the AC power provided.

NEVER use the charger with any voltage converter device or adapter.

ONLY use the Power Supply and Charging Cable that came with your unit.

NEVER start your car with the unit plugged into the automobile lighter port, as this can potentially cause a power surge that will damage the electronics.

DON'T leave your nutribullet Flip™ unattended when in use.

DON'T charge your nutribullet Flip™ if your USB-C charging port is wet, damaged, or dirty.

NEVER add hot or warm ingredients to your Blending Cup. Heated ingredients can cause pressure to build inside the Cup potentially causing the Flip-Top Lid to open forcefully, or the Cup and Motor Base, Blade, and Lid to separate from the Cup. This could expel hot ingredients and cause exposure to the blade, potentially resulting in bodily injury and/or property damage.

DO NOT blend contents for more than one minute. Do not run consecutive blending cycles that exceeds one minute total. The friction created by the blending process builds heat inside the Cup. Consecutive blending cycles that exceed one minute total may over-pressurize the Cup, potentially causing the Flip-Top Lid to open forcefully, or the Cup and Motor Base, Blade, and Lid to separate from the Cup. This could expel hot ingredients and cause exposure to the blade, potentially resulting in bodily injury and/or property damage.

Batteries are not replaceable. NEVER try to open, repair, or attempt to replace the batteries to your unit.

FLASHING LED COLOR: YELLOW

FLASHING LED COLOR: RED

Care & maintenance.

Before cleaning the nutribullet Flip™, UNPLUG the nutribullet Flip™ and allow the unit to completely SHUT DOWN by leaving the unit undisturbed for 90 seconds. Always make sure the blades are completely stopped before assembling or disassembling..

WARNING! NEVER submerge or rinse the entire Motor Base, Blade, and Lid in water or any other liquid, and be sure to keep water and other liquids away from the USB-C port.

Cleaning.

AUTOMATIC CLEANING:

You may use a blending cycle to quickly clean your blender.

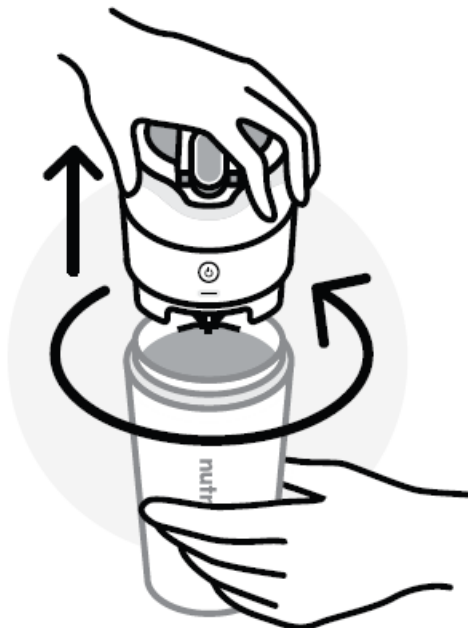


1. Rinse out the Blending Cup with fresh water. Add a drop of dish soap to the Blending Cup and fill halfway with water.

NOTE: For stubborn residue, allow the soap and water to sit for a few minutes on each end of the Blending Cup before running the cleaning cycle.



2. Start a blending cycle, and flip and shake the blender to agitate the water during the cycle.



3. After the cycle ends, open the Flip-Top Lid that covers the sip hole and empty the contents. Repeat the cycle once more, using only fresh water for the final rinse. Do not add soap.



4. Dry the Motor Base, Blade, and Lid upright with the Flip-Top Lid open.

NOTE: Make sure and pat the USB-C port dry and store in sunny area to fully dry before you begin charging.

CLEANING BY HAND:

MOTOR BASE, BLADE, AND LID: When hand-cleaning, always be mindful not to rinse/submerge the entire Motor Base, Blade, and Lid in water, and take care to prevent water from entering the USB-C port.

- Blade: point downward at an angle and carefully clean and rinse only the blade area of the Motor Base, Blade, and Lid, keeping your thumb or finger over the USB-C port.
- Drinking Spout: with the blade facing up, carefully rinse out the sip hole under a gentle flow of warm water, keeping your thumb or finger over the USB-C port.

Use the included Cleaning Brush to help clean the straw, under the blades, sip hole, and vent hole.

To dry, gently wipe and dry the Motor Base, Blade, and Lid and the USB-C port with a clean cloth. Rest the Motor Base upright with the

Flip-Top Lid open. Make sure the USB-C port is completely dry before charging.

WARNING! DO NOT submerge or rinse the entire Motor Base, Blade, and Lid in water or any other liquid.

BLENDING CUP:

Wash with soap and water.

DISHWASHER:

The Blending Cup and To-Go Lid are the only components of the nutribullet Flip™ that are dishwasher-safe, in the top rack only. To clean the blade and sip hole, follow the Hand Cleaning instructions above.

WARNING! DO NOT place your Motor Base, Blade, and Lid in the dishwasher.

Storage.

Always keep your nutribullet Flip™ in a dry, temperature-controlled location. Always store the Motor Base, Blade, and Lid with the Cup or Blade Cover attached, so the blades are covered and not exposed. Do not stack any objects on top of the unit while storing.

For replacement parts.

Visit bulletbrands.com.au/bulletbrands.co.nz or call Customer Service at AU: 1300 285 538 / NZ: 0800 232 633.

one (1) year limited replacement warranty statement.

If your product becomes defective due to faulty material or workmanship within a period of 1 year from the date of purchase, we warrant to do the following:

- For New Zealand Consumers: We will replace the product with a new product, free of charge, or repair the product at our cost, at our discretion.
- For Australian Consumers: Our goods come with guarantees that cannot be excluded under the Australian Consumer Law. You are entitled to a replacement or refund for a major failure and for compensation for any other reasonably foreseeable loss or damage. You are also entitled to have the goods repaired or replaced if the goods fail to be of acceptable quality and the failure does not amount to a major failure.

YOUR WARRANTY IS SUBJECT TO THE FOLLOWING CONDITIONS:

- DO NOT operate the appliance with a damaged plug or cord, or if the unit has been dropped, damaged or dropped in water. To avoid the risk of electric shock, do not disassemble or attempt to repair the appliance on your own. If the supply cord is damaged, it must be replaced by a qualified electrician in order to avoid a hazard. Incorrect re-assembly or repair can cause a risk of electric shock or injury to persons when the appliance is used.
- The item has not been misused, abused, neglected, altered, modified or repaired by anyone.
- The item has been subjected to fair wear and tear.
- The item has not been used for trade, professional or hire purposes.
- The item has not sustained damage through foreign objects, substances or accident.

YOUR WARRANTY DOES NOT COVER:

- Components that are subject to natural wear and tear caused by normal use in accordance with operating instructions.
- Unauthorised/improper maintenance/handling or overload is excluded from this warranty.
- For guarantee claims, you will need to submit a proof of purchase in the form of a valid receipt that displays date and place of purchase.

This warranty does not replace but is in addition to your statutory rights.

This warranty does not apply to accessories supplied with the item.

This warranty applies only to the original purchaser and may not be transferred.

Replacement items will be covered by the limited warranty for the balance of the warranty period from the date of the original purchase.

PLEASE NOTE:

Only the defective product or parts returned to place of purchase will be replaced under this warranty.

NEW ZEALAND

PO Box 100-707
NSMC
Auckland 0745
0800 232633
bulletbrands.co.nz

AUSTRALIA


PO Box 574
South Morang
Victoria 3752
1300 285538

nutribullet® is a registered trademark of CapBran Holdings, LLC. Copyright © 2024 CapBran Holdings, LLC. All rights reserved. Los Angeles, CA 90024, USA. Made in China.


Capital Brands Distribution, LLC | All rights reserved.

nutribullet® and the nutribullet® logo are trademarks of CapBran Holdings, LLC registered in the U.S.A. and worldwide.

Illustrations may differ from the actual product. We are constantly striving to improve our products, therefore the specifications contained herein are subject to change without notice.

 Detachable supply unit.

Documents / Resources

 <p>User guide.</p>	<p>nutribullet FLIP Portable Blender [pdf] User Guide FLIP Portable Blender, FLIP, Portable Blender, Blender</p>
---	--

References

- [n NutriBullet New Zealand | Shop Blenders, Food Prep & Cooking Appliances](#)
- [n NutriBullet Australia | Shop Blenders, Food Prep & Cooking Appliances](#)
- [User Manual](#)