




nutribullet 0540 Portable Blender User Guide

[Home](#) » [nutribullet](#) » **nutribullet 0540 Portable Blender User Guide** 

Contents

- [1 nutribullet 0540 Portable Blender](#)
- [2 Product Information](#)
- [3 Product Usage Instructions](#)
- [4 FAQ \(Frequently Asked Questions\)](#)
- [5 Product Overview](#)
- [6 Using And Power Instruction](#)
- [7 Documents / Resources](#)
 - [7.1 References](#)

nutribullet

nutribullet 0540 Portable Blender



Product Information

Specifications:

- Power: 16,400 watts
- Maximum Speed: 12
- Blade RPM: 300 (at level 8)
- Motor Speed: 200 (at level 4)
- Capacity: 100 ml

Product Usage Instructions

Safety Instructions:

Before using the product, please read and follow all the important safety instructions provided in the user manual in your preferred language.

Step 1: Preparation

1. Make sure the product is unplugged and clean.
2. Place the product on a stable and flat surface.
3. Ensure that the blending cup is securely attached to the base.

Step 2: Adding Ingredients

Add your desired ingredients into the blending cup. Make sure not to exceed the maximum capacity of 100 ml.

Step 3: Assembling

1. Place the lid firmly on the blending cup.
2. If applicable, attach any additional accessories or blades.

Step 4: Operating

1. Plug in the product.
2. Select the desired speed using the control panel or buttons.
3. Press the power button to start blending.

Step 5: Cleaning

After use, make sure to unplug the product and disassemble all parts for cleaning. Wash the blending cup, lid, and any accessories with warm soapy water. Avoid immersing the base in water.

FAQ (Frequently Asked Questions)

Q: Can I exceed the maximum capacity of 100 ml?

A: No, it is important not to exceed the maximum capacity as it may affect the performance and safety of the product.

Q: Can I immerse the base in water for cleaning?

A: No, the base should not be immersed in water. Only the blending cup, lid, and accessories are safe to wash with warm soapy water.

Q: What should I do if the product does not turn on?

A: First, ensure that the product is properly plugged in and that there is power supply. If the issue persists, refer to the troubleshooting section in the user manual or contact customer support.

Q: Can I use the product for hot ingredients?

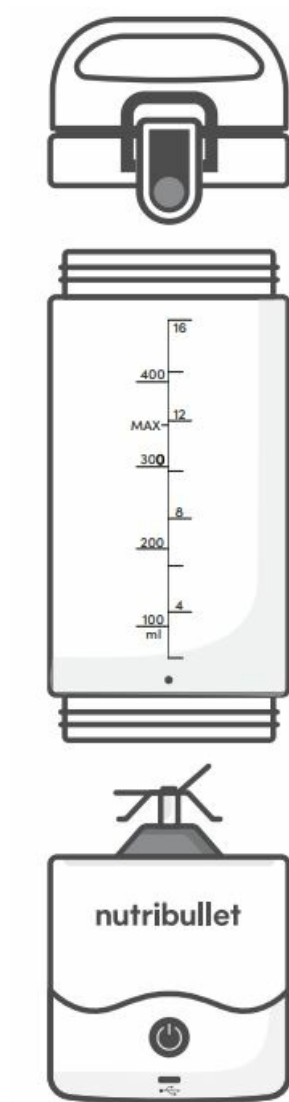
A: No, this product is not suitable for blending hot ingredients. Only use with cold or room temperature ingredients.

Carefully read all the important safeguards instructions before using the product.



Read all important safety instructions carefully before using the device.

Product Overview



Using And Power Instruction

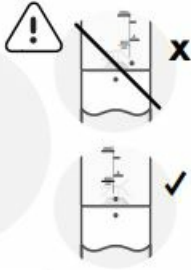
1



2



3

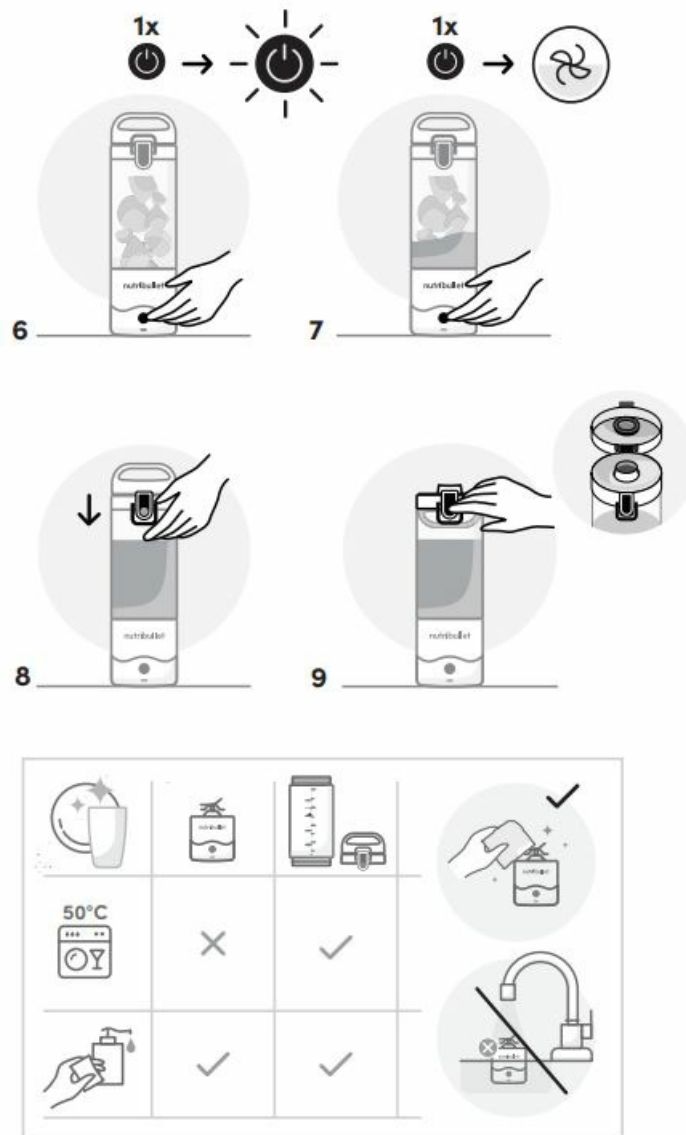


4




5





Capital Brands Distribution, LLC | All rights reserved. nutribullet and the nutribullet logo are trademarks of CapBran Holdings, LLC registered in the U.S.A. and worldwide. Illustrations may differ from the actual product. We are constantly striving to improve our products, therefore the specifications contained herein are subject to change without notice. 230919_nutribullet® Portable Blender

Documents / Resources

 <p>Quick guide.</p>	<p>nutribullet 0540 Portable Blender [pdf] User Guide 0540, 0540 Portable Blender, Portable Blender, Blender</p>
---	--

References

- [User Manual](#)

[Manuals+](#), [Privacy Policy](#)