



NUTREA 932007 Double Flow Instruction Manual

[Home](#) » [NUTREA](#) » NUTREA 932007 Double Flow Instruction Manual 

NUTREA 932007 Double Flow



THE DEVICE IS INTENDED FOR ONE USER ONLY

Contents

- 1 Introduction
- 2 Read before use
- 3 The different parts
- 4 Cleaning and disinfecting
- 5 Assembling the breast pump
- 6 Explanation of the buttons
- 7 How to use the breast pump
- 8 Pumping positions
- 9 Troubleshooting
- 10 Warranty policy
- 11 Product specifications
- 12 CUSTOMER SERVICES
- 13 Documents / Resources
 - 13.1 References

Introduction

The DoubleFlow breast pump is a double-sided electric breast pump that women can use for expressing and collecting breast milk after pregnancy. The breast pump is compact and designed in collaboration with professionals.

	
BPA-free Made of BPA-free plastic and dishwasher safe	Two motors Adjust the pumping program per individual breast
	
Express twice as fast Shorten expressing time by pumping double-sided	Closed system Protects breast milk and pump from contamination
	
2 year warranty Read the manual for the conditions	

Do you have questions or want to share feedback with us? We would love to hear from you, please send us an email at info@nutrea.nl

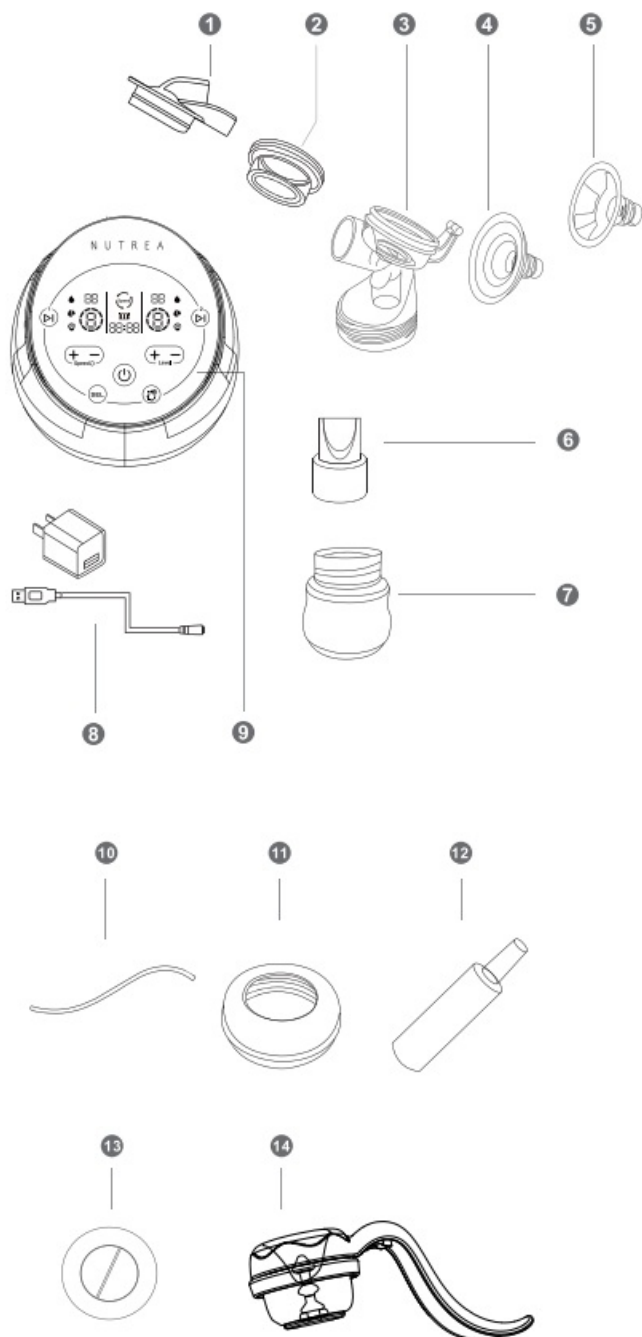
The product images shown are for illustration purposes only and may not accurately represent the product

Read before use

- Switch off the breast pump before removing it from the breast
- Do not wash the breast pump motor in water or other liquids
- Parts must be dry before storage to avoid mold build-up
- Contact your lactation consultant if you are expressing too little milk and stop expressing if there is no milk flow and you do not get a let-down reflex
- Contact your lactation consultant if pumping is painful
- Only use the breast pump during pregnancy after consultation with your lactation consultant or midwife
- Do not use aggressive and/or abrasive cleaning agents, this can damage the parts
- Store in a cool, dry place and avoid direct sunlight
- Replace parts or the entire product if it shows signs of wear or damage
- Do not use a cleaning brush or brush as this may damage parts and shorten their life
- Use an appropriate breast shield size or breast shield reducer to pump comfortably
- Keep out of reach of children
- To avoid damage to the breast pump motor, use only the supplied adapter
- Wash your hands thoroughly before using this appliance and dry all parts thoroughly to prevent damage from water entering the pump motor
- Do not use the pump if you have the impression that the packaging is damaged or has already been placed.
Please contact customer service immediately

The different parts

1. Diaphragm cap
2. Silicone diaphragm
3. Breast shield connector
4. Breast shield brace
5. Silicone breast shield
6. Silicone valve
7. Bottle 150ml
8. USB cable and adapter
9. Breast pump motor
10. Air tube
11. Ring cover
12. Tube adapter
13. Seal ring
14. Manual breast pump lever



Cleaning and disinfecting

This chapter discusses methods for cleaning and disinfecting the breast pump. To ensure that your expressed breast milk is safe for your baby, make sure your breast pump is properly cleaned. Before cleaning and disinfecting, wash your hands thoroughly and only use tap water of drinking quality or bottled water for cleaning.

Cleaning all washable parts

The washable parts include all parts except the breast pump motor, hose and USB cable and adapter.

Clean

Before first use and after each use

1. Disassemble all washable parts
2. Wash the parts by hand

- a. Rinse the parts with cold drinking quality water.
 - b. Clean the parts in warm soapy water.
 - c. Rinse the parts for 15 seconds with drinking quality cold water.
3. Dishwasher wash
4. Place the parts on the top rack of the dishwasher.

Disinfect

Before first use and once a day

1. Boil in boiling water for about 5 minutes. Make sure all parts are submerged.
2. Sterilization in microwave or steamer. We do not recommend using this method for more than 5 minutes.

Cleaning the breast pump motor

Clean the breast pump motor after each use

1. Switch off the breast pump.
2. Remove the plug from the socket.
3. Take a clean cloth and moisten it with drinking-quality water and remove the breast pump motor.
4. Dry the breast pump motor with a clean, dry cloth.



NB: The breast pump motor cannot be disinfected or cleaned with water



Do not use any cleaning agents or abrasive cloths

Cleaning the tube

In principle, you do not have to clean the tube because there should be no milk or moisture in it. If you find water or milk in the tube, clean the tube as follows. .

1. Switch off the breast pump
2. Disconnect the tubing from the breast pump motor and connector.
3. Completely flush the tube with cold water.
4. Wash the tube in warm soapy water.
5. Rinse the tube with cold water.

Dry

1. Shake off any remaining water from the parts.
2. Dry them with a clean cloth or let them air dry.




Dry all parts thoroughly before use

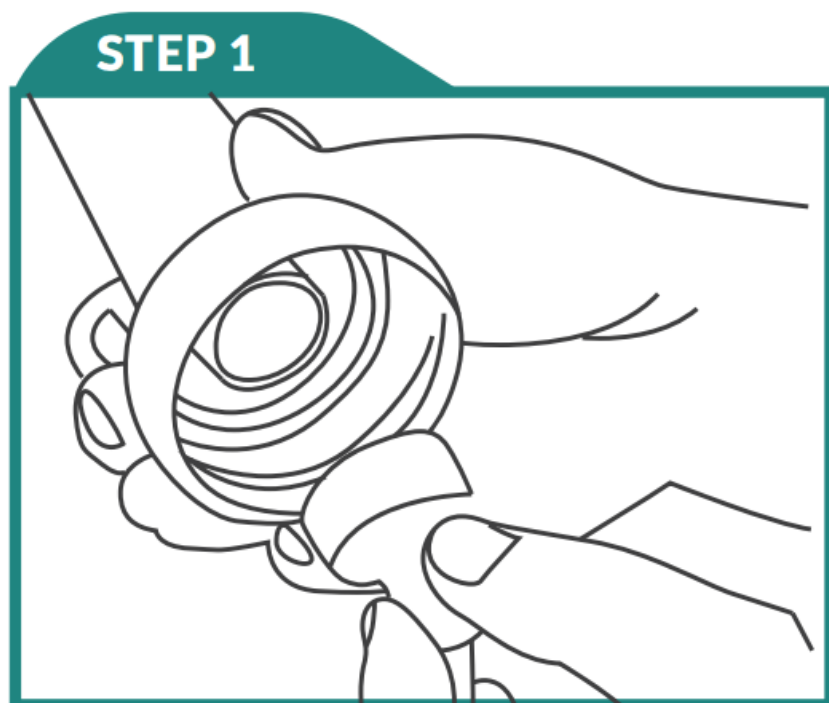


Do not store wet or damp parts as this can cause mold to develop.

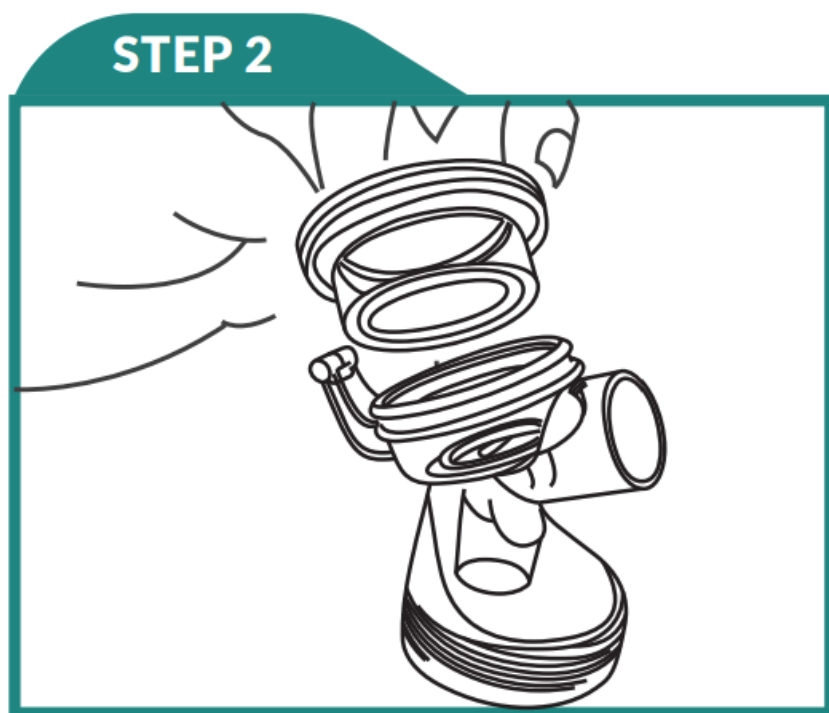
Assembling the breast pump

 Wash your hands thoroughly before assembling the pump. Before use, ensure that all washable parts are cleaned and disinfected as described in this manual. And make sure all parts are dry before assembling.

1. Fit the valve into the breast shield connector and make sure the valve is pushed in properly

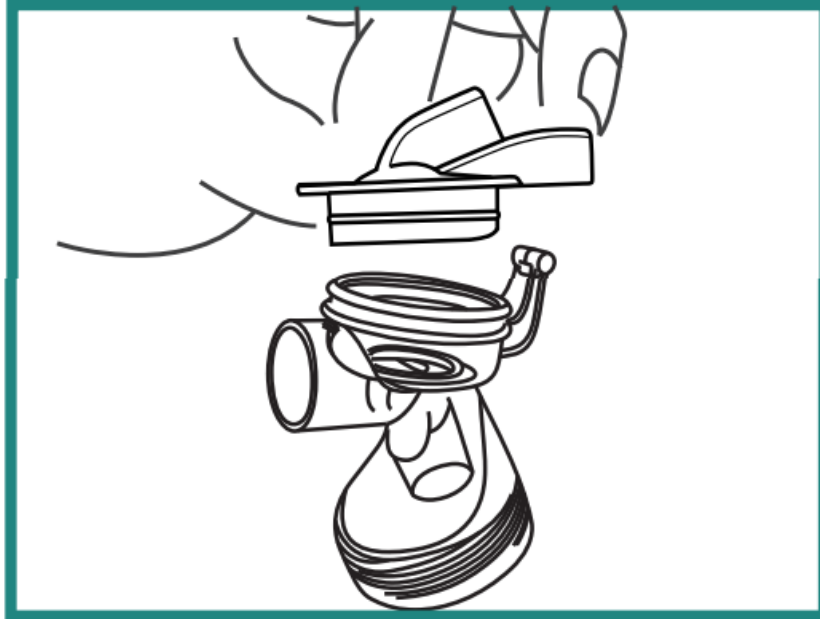


2. Install the diaphragm onto the breast shield connector.



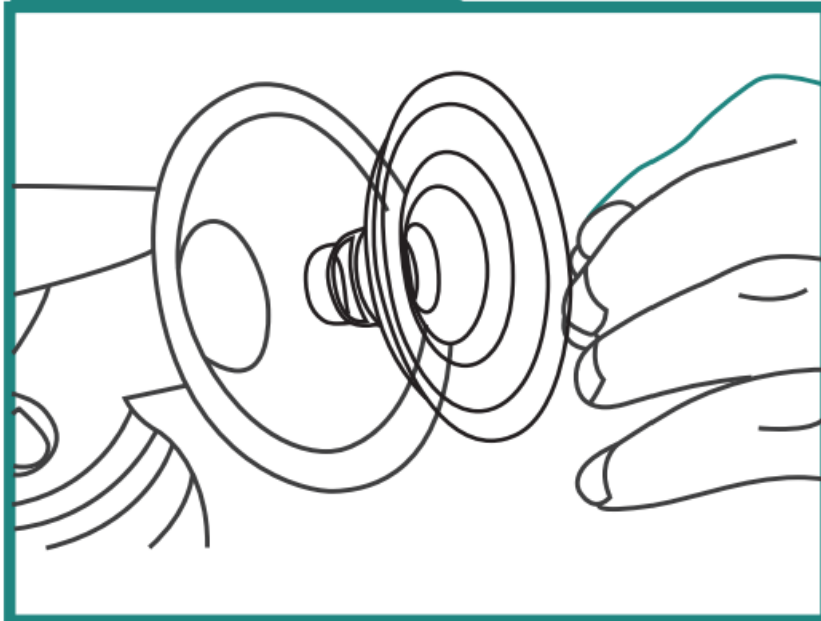
3. Firmly insert the tube adapter into the diaphragm cap.

STEP 3



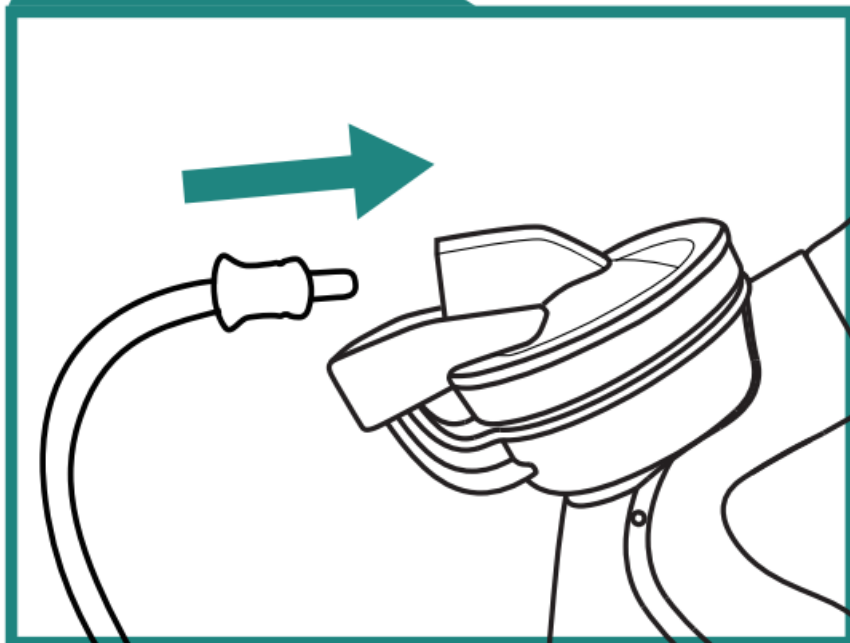
4. Tighten the breast shield connector onto the bottle securely.

STEP 4



5. Attach the diaphragm cap to the diaphragm and breast shield connector and press firmly.

STEP 5



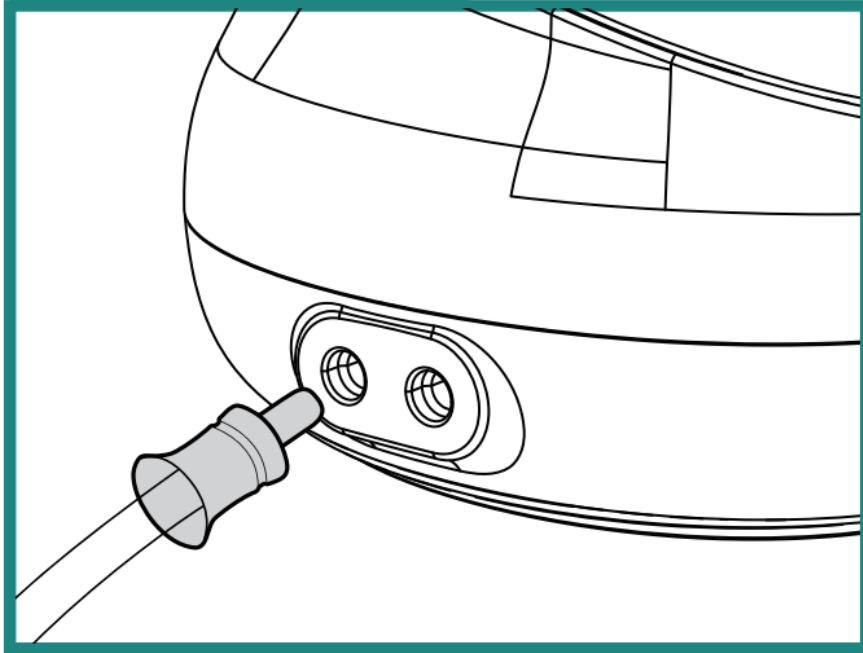
6. Install the silicone breast shield onto the breast shield brace. Press the edge of the silicone breast shield over the breast shield brace, making sure the gaps are properly aligned.

STEP 6



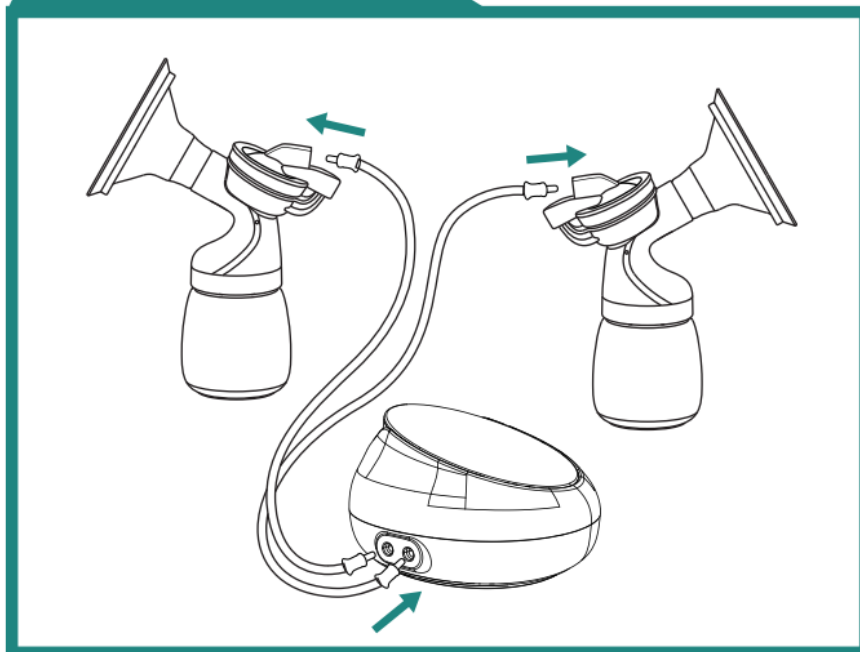
7. Firmly insert the tubing adapter into the breast pump motor.

STEP 7



8. Repeat the steps for the second double-sided pumping bottle. The installation is complete and the breast pump is ready to use.

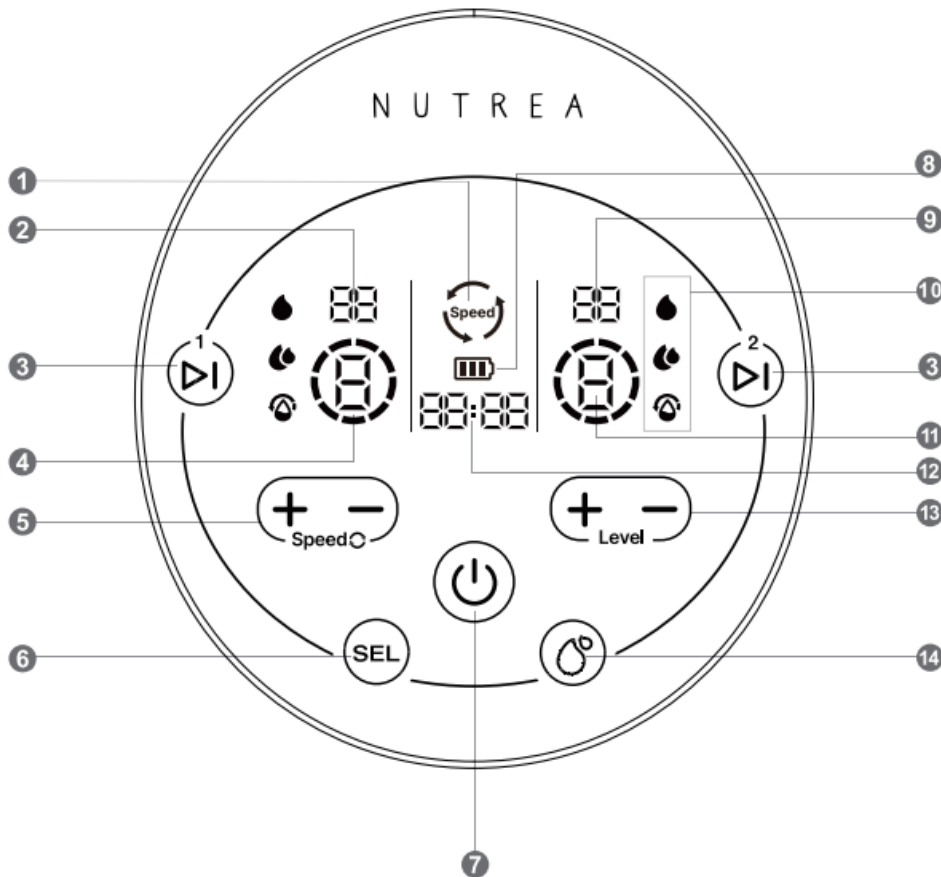
STEP 8



Explanation of the buttons

1. Speed mark
2. Speed left
3. Pause button
4. Vacuum left
5. Adjust speed
6. Selection button

7. On/Off button
8. Battery percentage
9. Speed right
10. Pump mode
11. Vacuum right
12. Time indication
13. Adjust vacuum level
14. Customize pumping mode



How to use the breast pump



Instructions before use:

Make sure that all parts of the breast pump are fully disinfected and that the breast pump is assembled according to the instructions. Wash your hands and warm compress and massage the breast before expressing. After massaging the breast, sit up straight and align the silicone center of the breast pump cup with the nipple. Firmly press the breast pump onto the breast to ensure no air can enter and provide good suction. Do not lie down or tilt the breast pump.



On off switch

Long press this button to turn on the machine and a second press turns off the machine. The pump will shut down automatically after working for 30 minutes



Vacuum level adjust button

These two knobs are for adjusting the vacuum. In the massage mode from level 1 to level 4, it will automatically switch to the next level after 45 seconds. In level 5 to level 9 of the massage mode, you can switch manually according to your own comfort. Each mode has 9 levels, the higher the level, the stronger the suction power.



Speed adjust button

These two buttons are for speed adjustment. If the speed is not comfortable for you, you can use this button to increase or decrease the speed. If you want to adjust the speed per breast, first press the select button. Adjusting the rate is only possible in expression mode and 2-in-1 mode.



Pause button

These two buttons are pause buttons, you can press one of them to pause the pump on the left or right side.



Selection button

First press the select button to individually adjust the suction level or speed for the left or right side.



Mode button

There are three working modes, massage mode, suction stimulation mode and expression mode. When the machine is turned on, the default working mode is level one of massage mode. Press this button to switch to Stimulation and Expression mode.



Massage mode



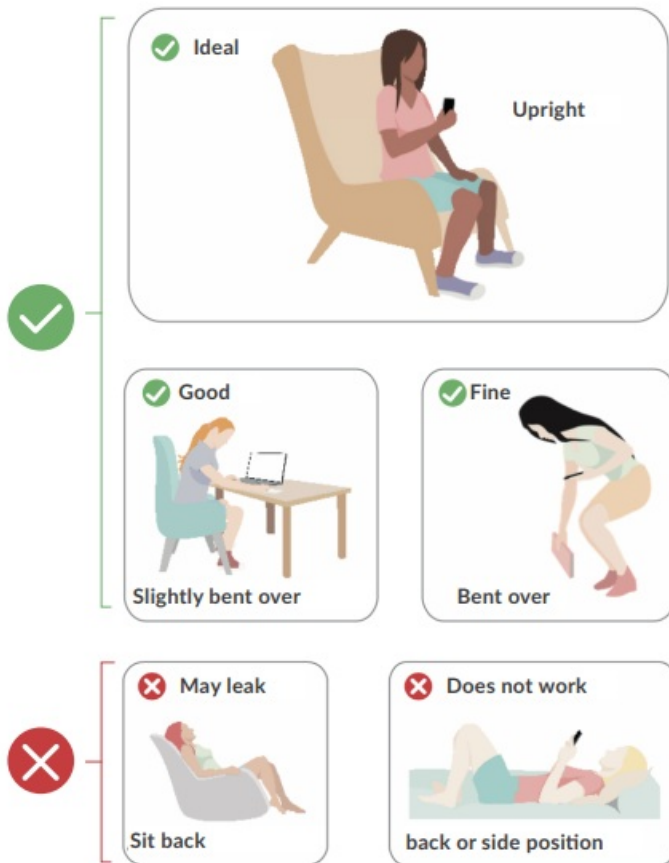
Expression mode



2-in-1 mode

Pumping positions

Pump positions



Troubleshooting



There is little or no suction power

- Check that all parts are clean and dry.
- Check whether parts such as the valve, hose or other parts are damaged.
- Check that all connectors are properly connected.
- Check that the air hose is not pinched or that there is moisture in it.
- Make sure that the breast shields seal around the breast airtight.



The breast pump motor does not turn on

- Check if the battery is fully charged
- Check if the adapter and charging cable are connected properly
- Contact Nutrea Customer Service



Milk in the air hose

- Check that the diaphragm is not damaged
- Contact Nutrea Customer Service

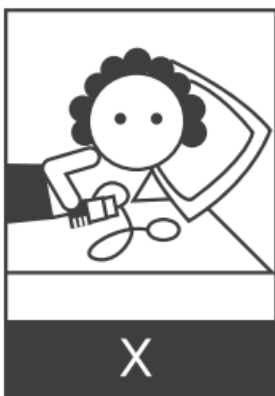


Before use, all parts must be dry to avoid damage to the breast pump motor



Do you have pain while expressing? Please contact your lactation consultant or nurse immediately.

Sit up straight while pumping. Do not lean forward or lie on your side. See also the pumping positions in the previous chapter.



Warranty policy

We offer a 24-month warranty on the pump mechanism (control module) and a 90-day warranty on the washable parts from the original date of purchase. Defects discovered within the warranty period must be reported to Nutrea through Customer Service. Nutrea reserves the right to determine the cause of the defect to determine whether it is covered by the warranty.

The warranty does not cover normal wear and tear or damage caused by use, physical or natural destruction, accident, abuse, neglect or other external causes. Any attempt to disassemble the pump mechanism (control module) will void this warranty.

In the event that Nutrea decides to replace the product or parts, the duration of this warranty will not be extended for the replacement product.

Use by more than one person may result in health hazards and will void the warranty.

Product specifications

Brand:	Nutrea
Brand:	DoubleFlow
EAN number:	8720648346453
Bottle capacity:	150 ml
Average charging time:	4 hours
Vacuum range:	40 tot 280 mmHg
Power connection:	5V DC
Battery type:	Lithium polymer
Battery capacity:	3000 mAh
Dimensions motor:	126*131*84 mm
Weight motor:	428 gram


CUSTOMER SERVICES

Adress: Crooswijksestraat 104, 3034 AP Rotterdam, The Netherlands

Email: info@nutrea.nl

DoubleFlow

Documents / Resources

	<p>NUTREA 932007 Double Flow [pdf] Instruction Manual 932007 Double Flow, 932007, Double Flow, Flow</p>
---	--

References

- [User Manual](#)

[Manuals+](#), [Privacy Policy](#)

This website is an independent publication and is neither affiliated with nor endorsed by any of the trademark owners. The "Bluetooth®" word mark and logos are registered trademarks owned by Bluetooth SIG, Inc. The "Wi-Fi®" word mark and logos are registered trademarks owned by the Wi-Fi Alliance. Any use of these marks on this website does not imply any affiliation with or endorsement.