



NUTOMO M3 Smart Door Lock Handle Sets Keyless User Manual

[Home](#) » [NUTOMO](#) » NUTOMO M3 Smart Door Lock Handle Sets Keyless User Manual 

NUTOMO

USER MANUAL

Smart Door Lock

Version: M3-MSBF2HS-NUT/M3-
MBBF2HS-NUT 2.0

Contents

- [1 M3 Smart Door Lock Handle Sets Keyless](#)
- [2 Product Details](#)
- [3 How to Install the Lock](#)
- [4 Detect Left/Right Hand Door](#)
- [5 How to Reset the Lock](#)
- [6 Quick Guide of Use the Lock](#)
- [7 How to Use it by App](#)
- [8 How to Pair Gateway, Alexa](#)
- [9 How to Program by Keypad](#)
- [10 FAQ](#)
- [11 Documents / Resources](#)
 - [11.1 References](#)
- [12 Related Posts](#)

M3 Smart Door Lock Handle Sets Keyless



Letter of thanks to clients

Dear client,

First of all, thank you so much for choosing the NUTOMO brand among plenty of products.

NUTOMO aims at the “safe, simple, smart life”. NUTOMO has its own manufactory and mainly produces locks selling all around the world, such as United States, Europe, Japan, etc.

Further, all products are the most assuring products selected after countless uses, tests, and personal experiences of staff. Up to now, we have also received the encouragement and love of numerous customers, for which we are also very grateful. In the future, all staff of our company will work harder and NUTOMO will always study and integrate the world’s most cutting-edge technology into our products that will exceed customers’ expectations. We are also very willing to listen to every customer’s opinions and advice to make more improvements and efforts in the future.

Last but not least, if you have any issues such as installation or suggestions about the product, please do not hesitate to contact us by phone or email at any time. “Customer foremost” will always be our constant principle.

Wish you all the best and luck. Please continue to support NUTOMO in the future, thank you!



Scan me

APP download



<http://onelink.to/xf7eah>

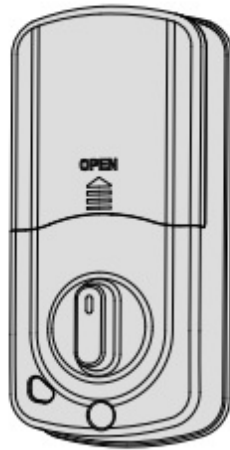


<http://onelink.to/ttlock>

Product Details



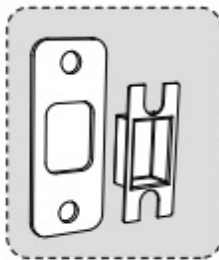
Exterior lock



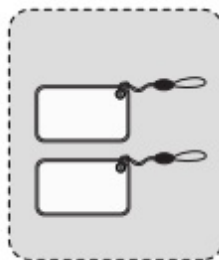
Interior lock



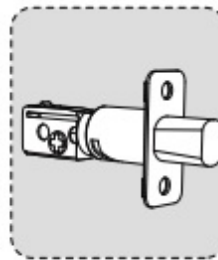
Mounting Plate



Strike Plate



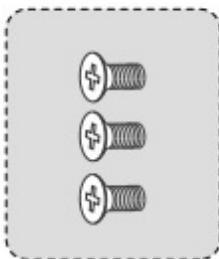
IC Cards



Deadbolt



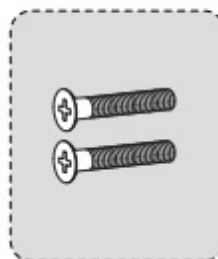
Physical Keys



Interior Lock
Screws



Deadbolt/Strike
Plate Screws

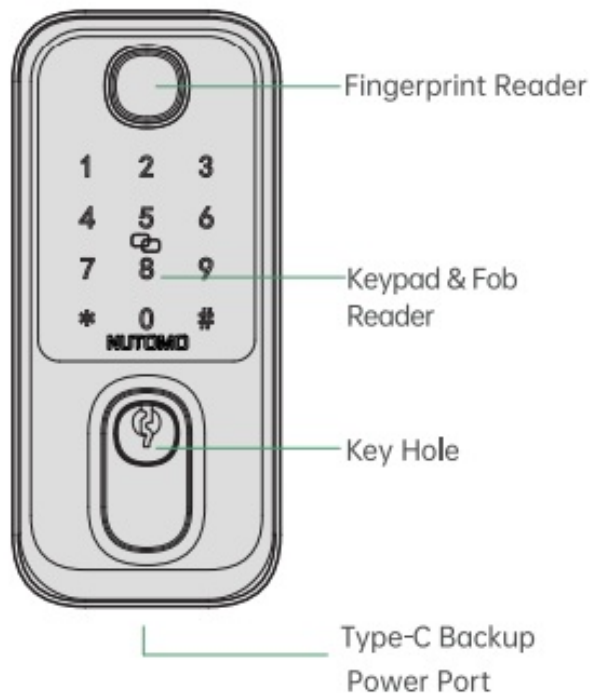


Mounting
Plate Screws

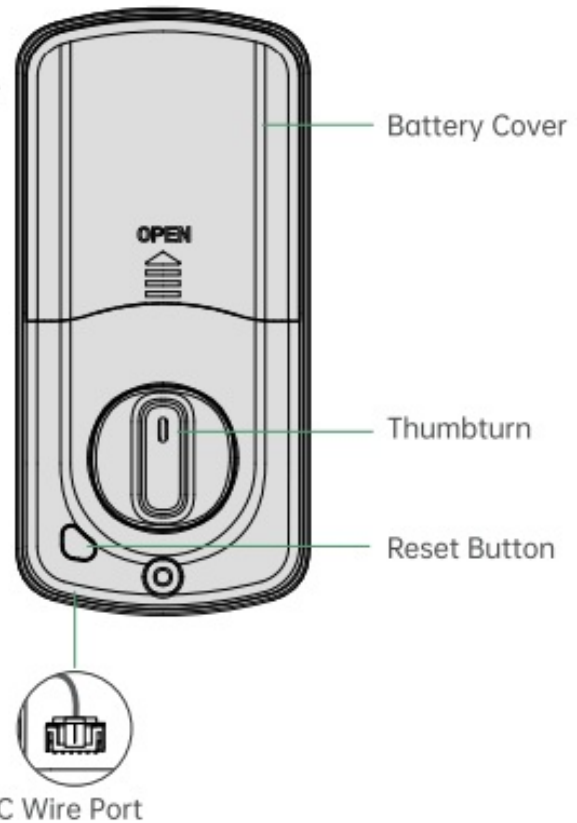


User Manual

Front Panel:



Back Panel:



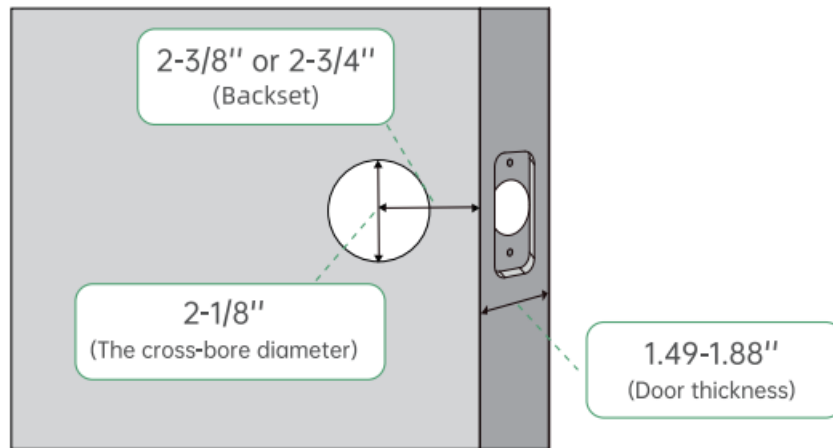
Category	Detailed parameters
The power supply voltage	DC 4.5V ~9.0vV
Low voltage alarm voltage	4.8V±0.1V
Standby current	90mA
Working current	<400mA
Working temperature	-20°C ~ +70°C
The keyboard type	Capacitive touch keyboard
Password number	250 groups
Fingerprint type	Capacitive semiconductor sensor
IC card number	1000Pcs
Unlock modes	Fingerpringt/Passcord/APP control/IC card IMechanical key/eKey/Alexa
FAR	<0.001%
FRR	<1.0%

How to Install the Lock

1. Measure the Door Size

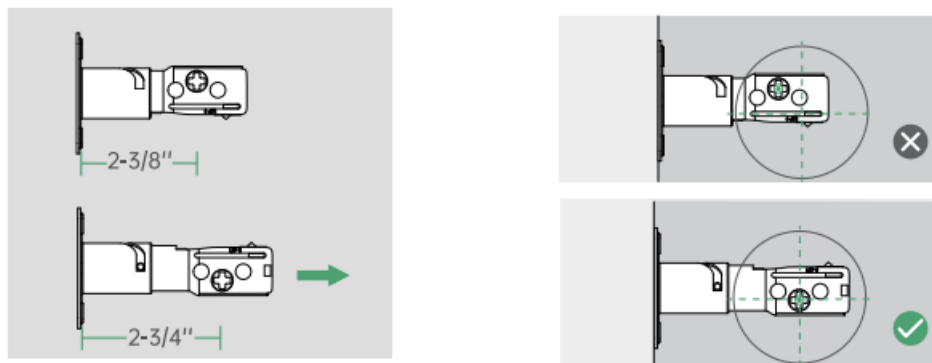
Make sure door thickness is 1.49-1.88", door hole diameter is 2-1/8", measure backset size is 2-3/8" or 2-3/4"

with the deadbolt.



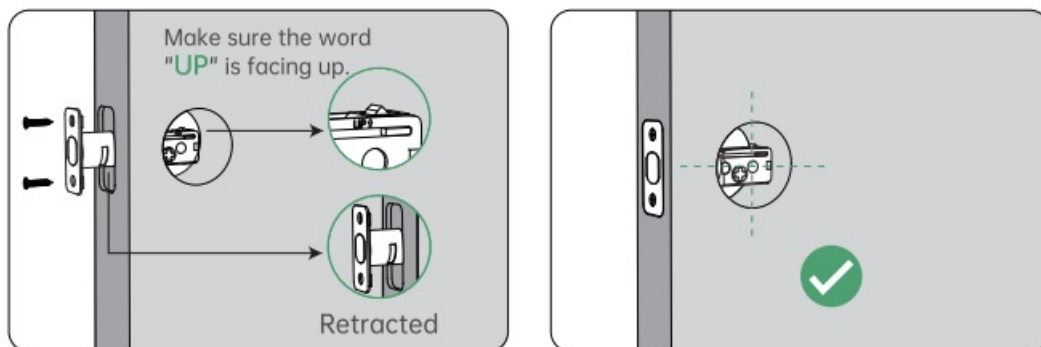
2. Adjust the Length of the Deadbolt

Adjust the deadbolt to $2\frac{3}{8}"$ or $2\frac{3}{4}"$ based on your door backset size.



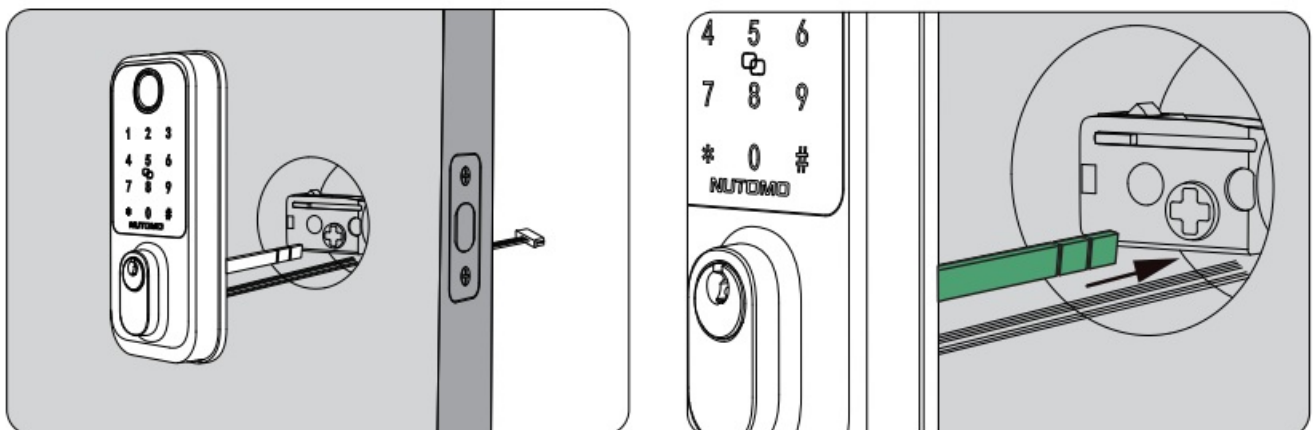
3. Install Deadbolt

Fix the deadbolt with 2pcs deadbolt screws, keep the deadbolt in retracted status.



4. Install Exterior Lock

Route the IC cable below the deadbolt, spindle must be in 'vertical' status.



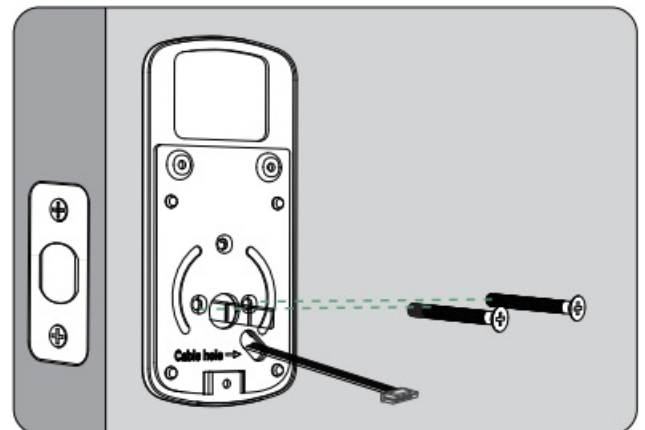
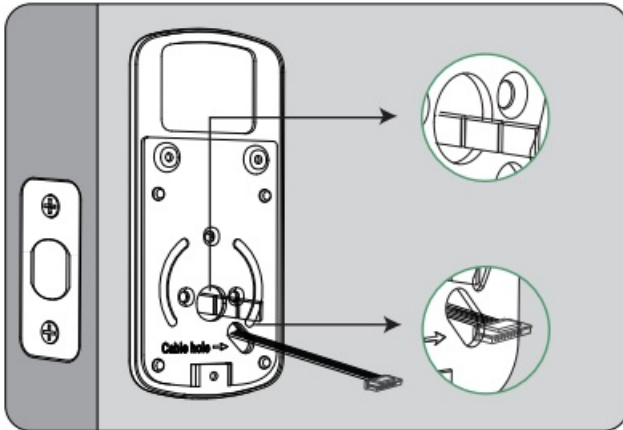
Route the IC cable below the deadbolt.

NOTE: Do not insert the key during installation.

NOTE: deadbolt must be in unlock position and the spindle must be in "vertical" status.

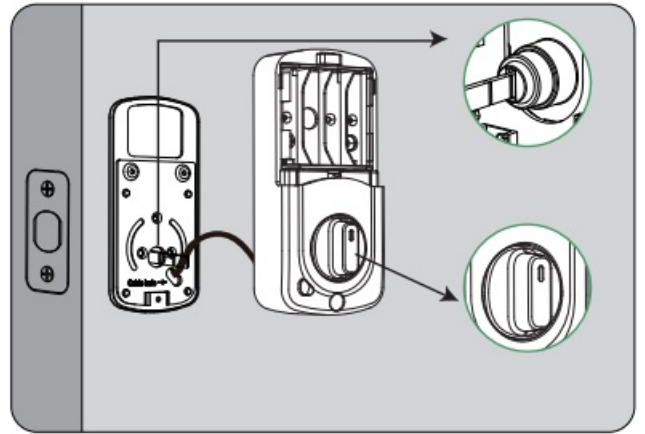
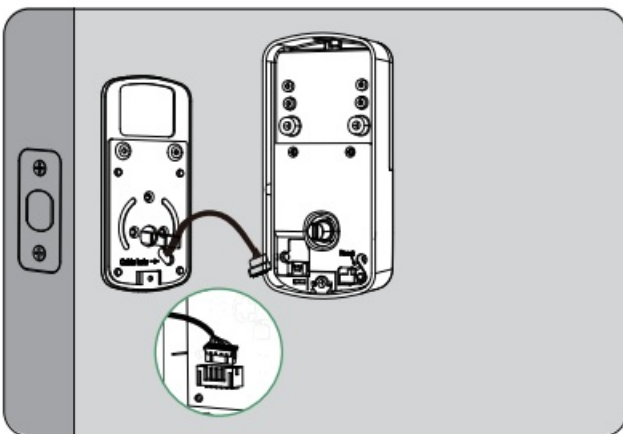
5. Fix the Mounting Plate

- Fix the black rubber pad on the metal plate(black rubber pad face inside), route the cable through the hole in the mounting plate,word with "Cable Hole" should face outside.
- Fix the plate with 2pcs mounting plate screws.



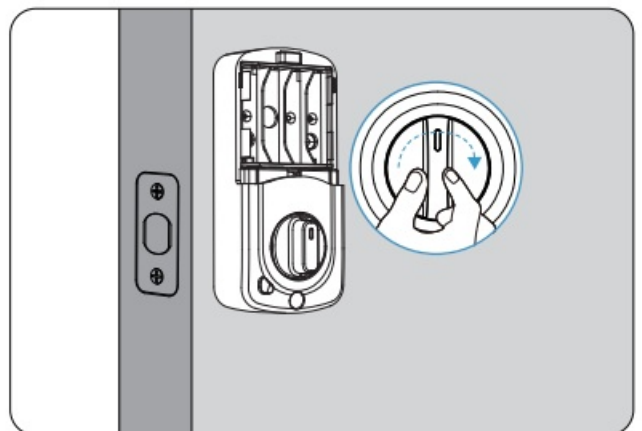
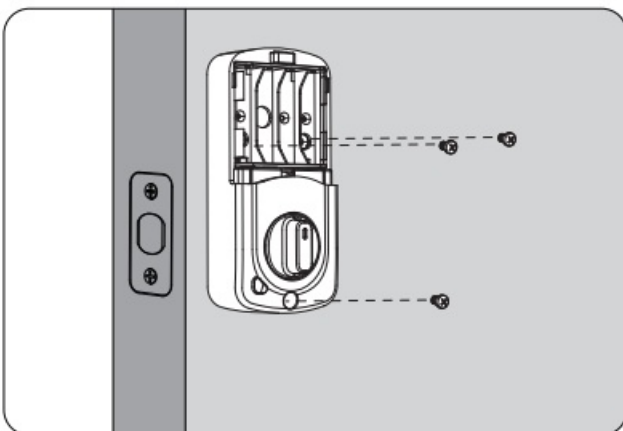
6. Install the Interior Lock. Connect the IC cable tightly.

- Rotate the door knob in vertical position and insert the spindle(Don't load batteries until lock is completely installed).



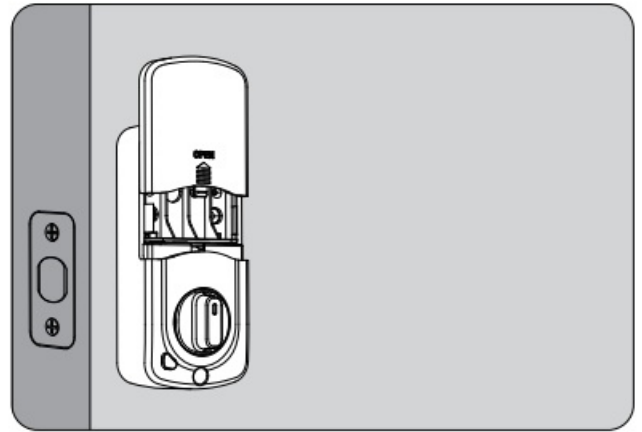
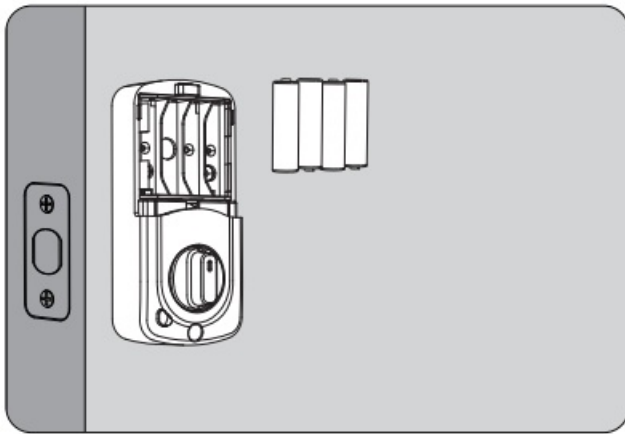
7. Fix Interior Lock

- Secure the lock with 3pcs interior lock screws.
- Test the lock by rotating the door knob to see if the deadbolt can be extended and retracted smoothly.



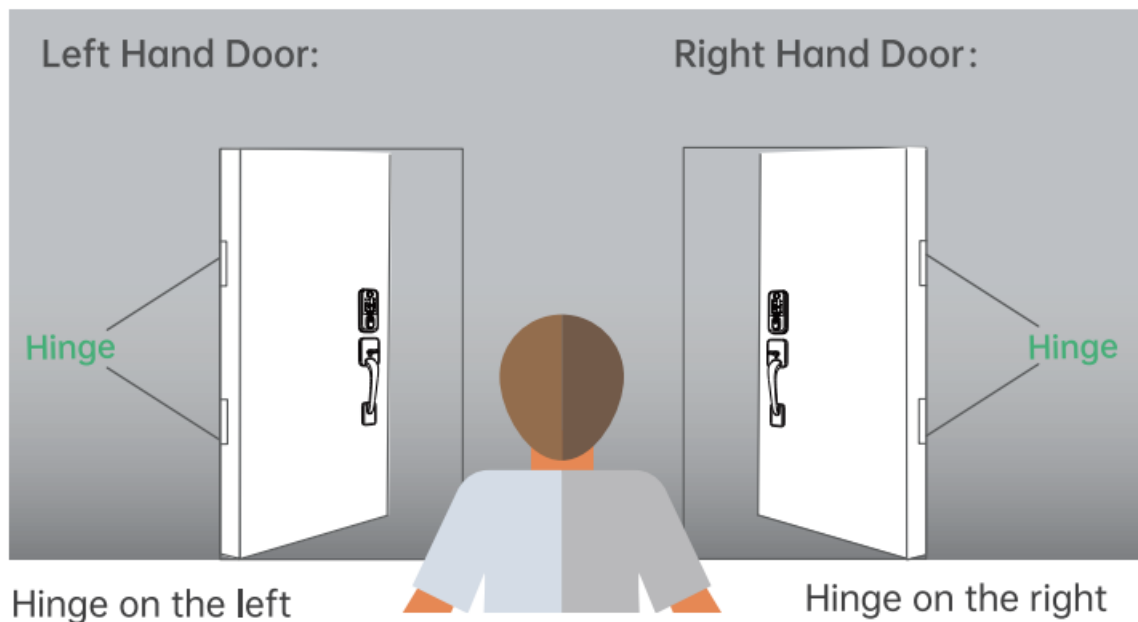
8. Install Batteries

Please install 4 pcs AA batteries in unlock status and keep the door open to avoid being locked out.



Detect Left/Right Hand Door

Set left/right hand door



The most important step is to adjust this smart lock 'door opening direction' by phone App or programming code. Recommend to use Next Lock/TT lock App on phone for easier setting.

How to know your door opening direction?

Standing outside of your door(Facing the keypad), locate the door hinge.

Hinge is on the left, go to Next Lock→Settings→Door opening direction→choose 'open to left'(Left hand door)

hinge is on the right, go to Next Lock→Settings→Door opening direction→choose 'open to right'(Right hand door)

NOTE:

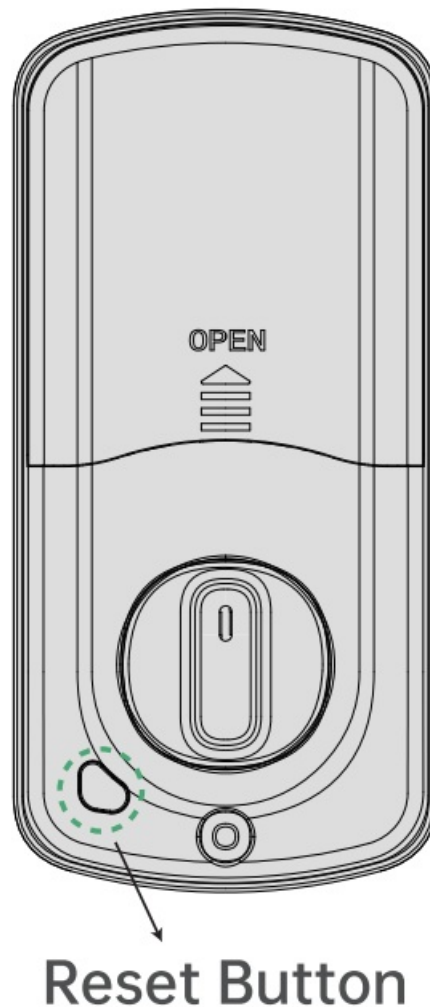
1. Please register a Next Lock account and make sure the lock is paired with Next Lock App before you set the 'door opening direction' on the phone, detailed steps can be seen on Page 12-13
2. Detailed steps about programming code can be seen on Page 26-27 <08 >

How to Reset the Lock

Reset method 1:(Recommend)

1. Take down one battery and wait for 5 seconds.
2. Put the battery back.
3. Long press the reset button for 10 seconds while the keypad lighting up.
4. After hearing “Please input the initialization password”, enter 000#.
5. After hearing “Administrator deleted successfully”, reset successfully.

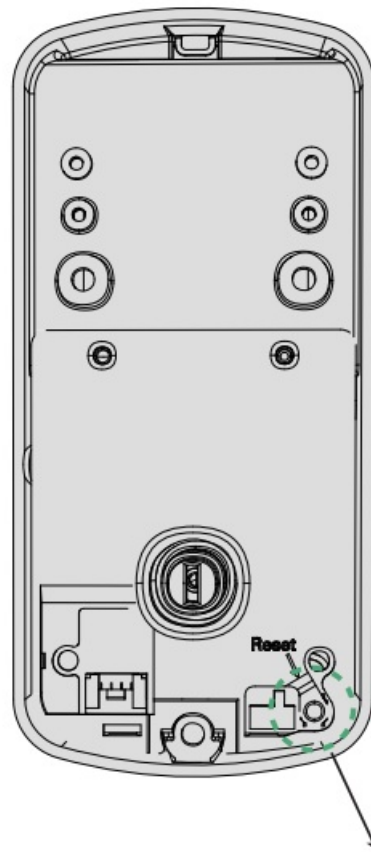
NOTE: If method 1 doesn't work, please try method 2 or contact customer service for help.



Reset method 2:

1. Uninstall the back lock by taking down the battery cover. take out the 3 screws on the back lock.
2. Load the batteries.
3. Hold the Reset Button (The position is shown below)for 5 seconds. You'll hear the sound"Input initialization passcode" from the lock.
4. Input 000# on the keypad after the sound. You'll hear "Administrator deleted successfully", which means reset successfully.

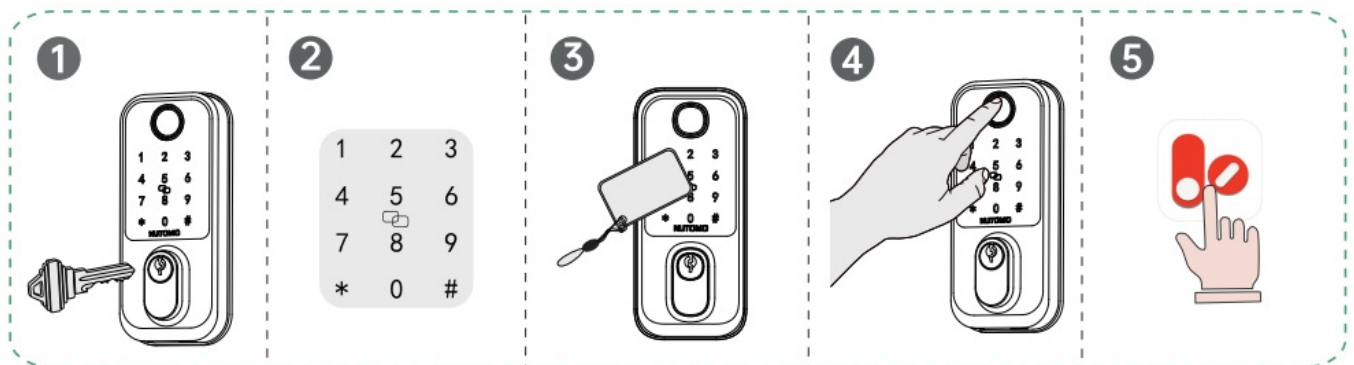
NOTE: If this method doesn't work, please contact customer service.



Reset Button

Quick Guide of Use the Lock

Your lock is now installed! Let's learn to use it!
Unlock the door from outside



Unlock the door from inside

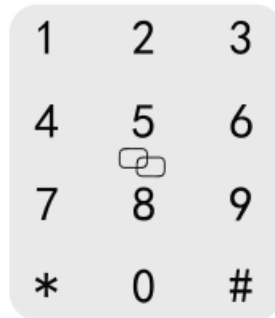


Rotate the turn piece to
unlock position



Next Lock App

Lock the door from outside



1. Hold “#” on the keypad for 2S.
2. In auto lock mode, the bolt will extend out automatically.
3. Lock with physical keys.
4. Lock by App on the phone.

Lock the door from inside

1. Rotate the turn piece to lock position.
2. Lock by App on the phone.

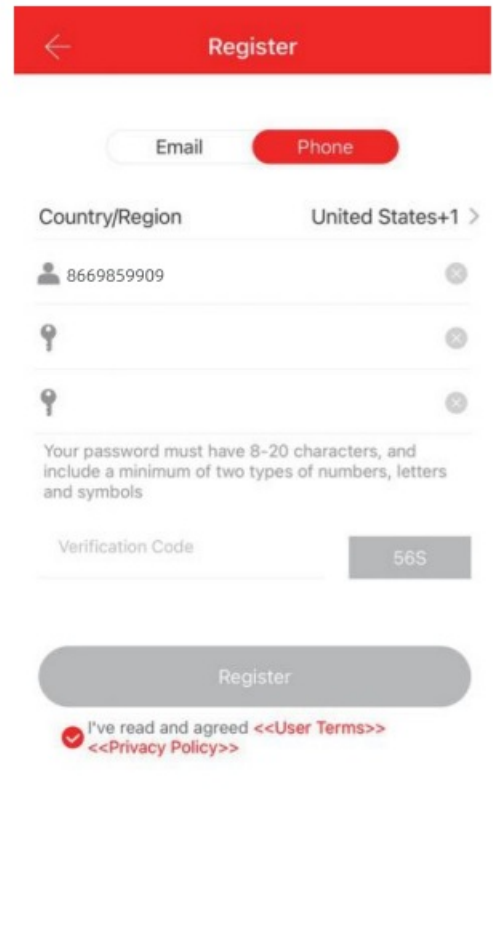
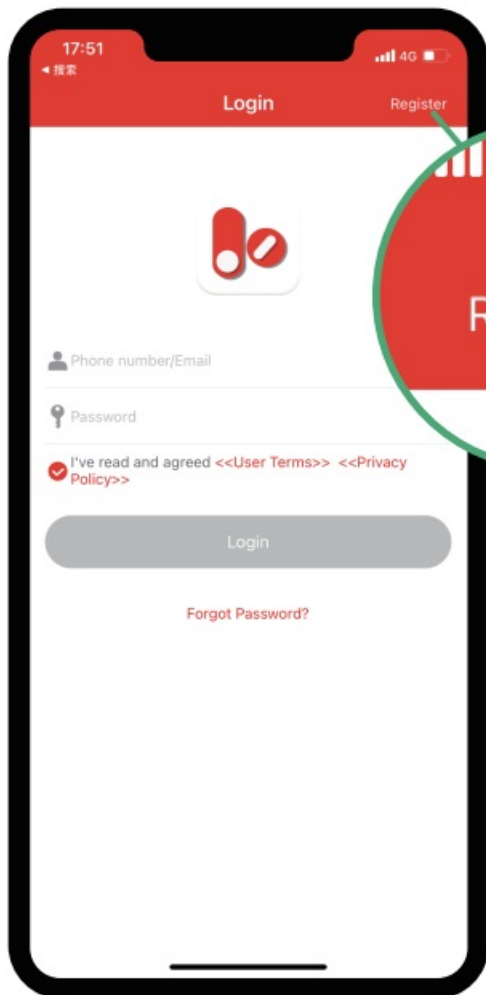
How to Use it by App

1. Account Registration

1. Download the Smart Lock app from Google play or APP Store.
2. Search “Next Lock” or “TT Lock”.



3. Click register to get started.
4. Enter the email or phone number (e.g. 9.8669859909), and set the password, click Get Code and enter the verification code (Please select the correct Country/Region).



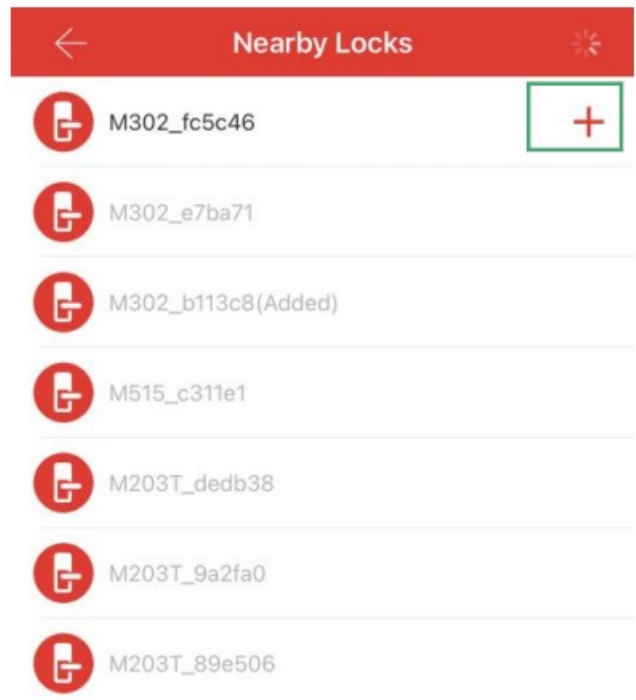
2. Pair the lock and Next Lock App

Step 1: Click “Big Plus”, please make sure your phone bluetooth is turned on, and make sure you are nearby the lock within 3 meters.



Step 2: Touch the keypad and click “Next”.

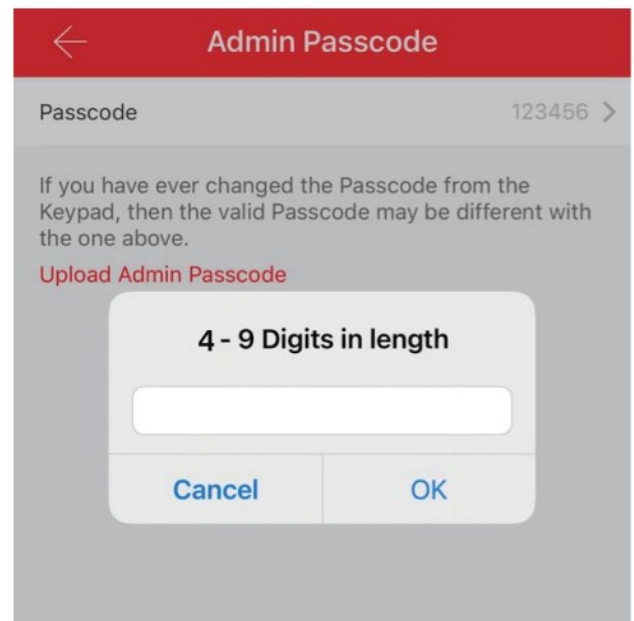
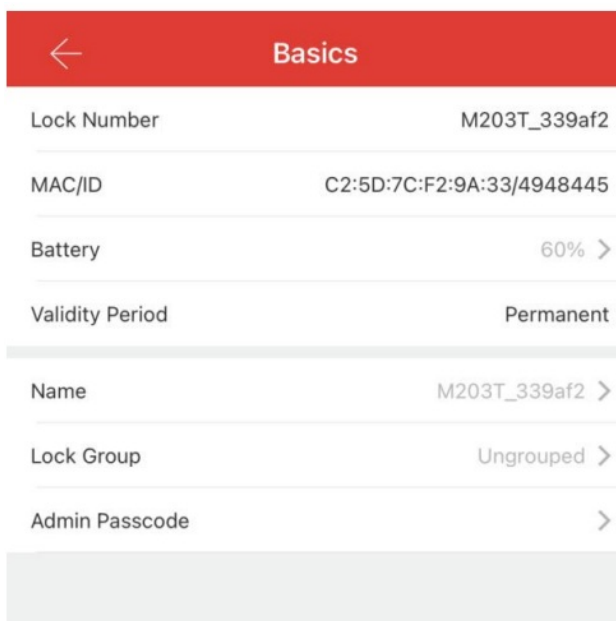
Step 3: Click the red plus sign to add the lock, please name the lock like “front door”.



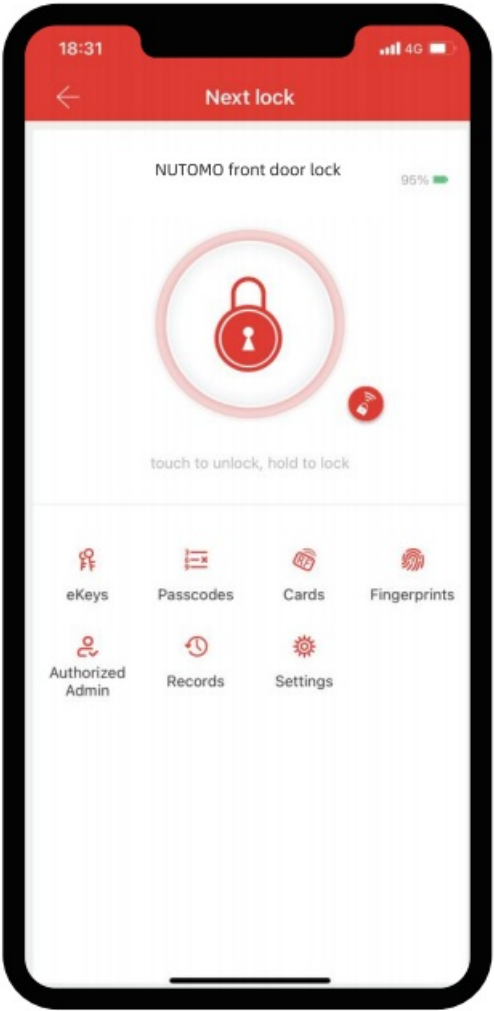
3. Modify Admin Passcode










Step 4: NOTE: The default code(123456#) will be invalid after pairing successfully

Set your new Admin passcodes: Click settings > Basics > Admin Passcode.

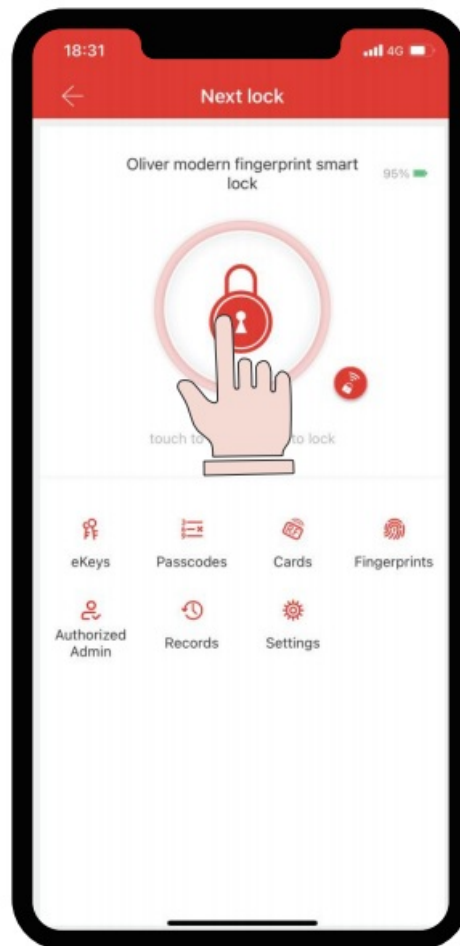


4. App Features Overview



	<p>Unlock/Lock</p> <p>Unlock/Lock using phone's bluetooth</p>
	<p>Remote Unlock</p> <p>Unlock remotely if G2 Gateway is connected nearby</p>
	<p>eKeys</p> <p>Others can control the lock via the app</p>
	<p>Passcodes</p> <p>Generate 5 different types of passcodes</p>
	<p>Cards</p> <p>Set up your fobs here</p>
	<p>Fingerprints</p> <p>Set up fingerprints</p>
	<p>Authorized Admin</p> <p>create and edit admins</p>
	<p>Records</p> <p>view entry times ottempts and methoods set ayte locj and passage mode here</p>
	<p>Setting</p>

5. Unlock/Lock by App



Unlock: Tap this big icon once.

Lock: Press this big icon for seconds.



Tap to remotely unlock

(Need extra G2 gateway, sold separately)

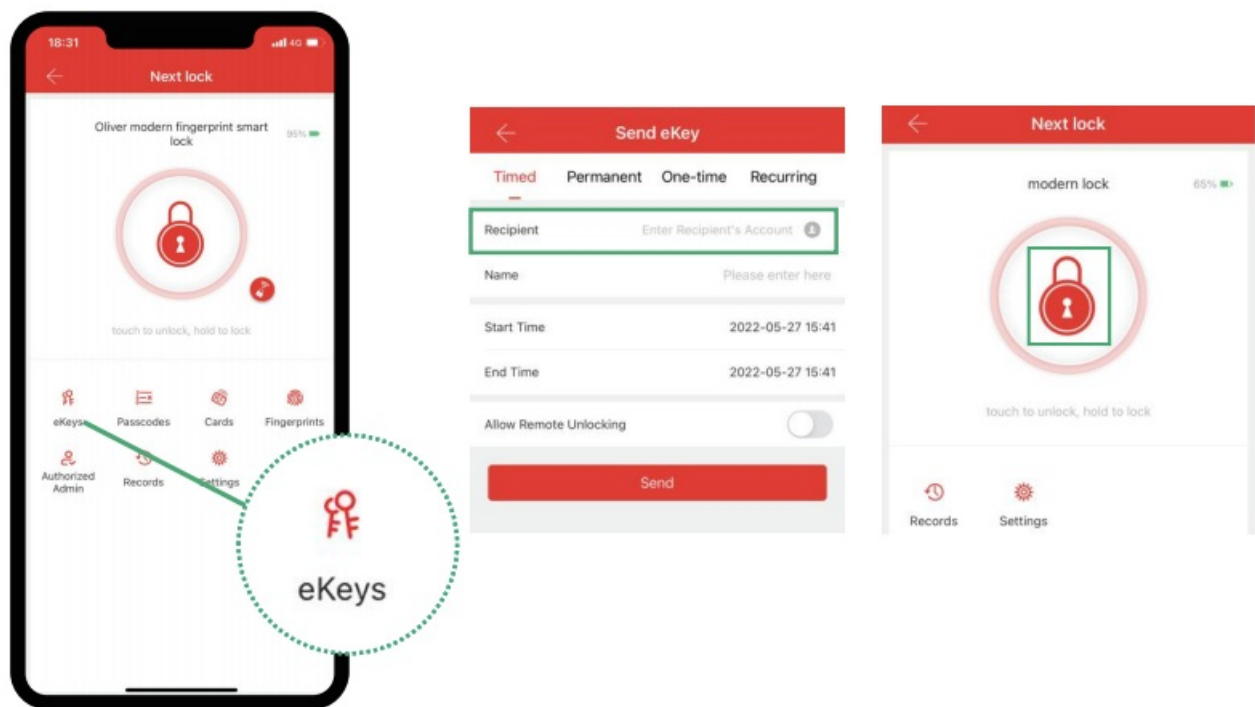
6. Share Ekeys

NOTE: eKeys are different from passcodes. eKeys require the other user to download the next lock app and then they can lock/unlock by APP too.

Step1: eKeys works by sharing app access of your lock with another Next lock account. eKey recipients will also be able to use their phone to unlock/lock the smart lock.

Step2: Enter recipient's account, it can be the phone number or email address used during registration.

Step3: The recipient needs to log into their next lock account, then they can find the code in their messages and gain the privilege to lock/unlock.



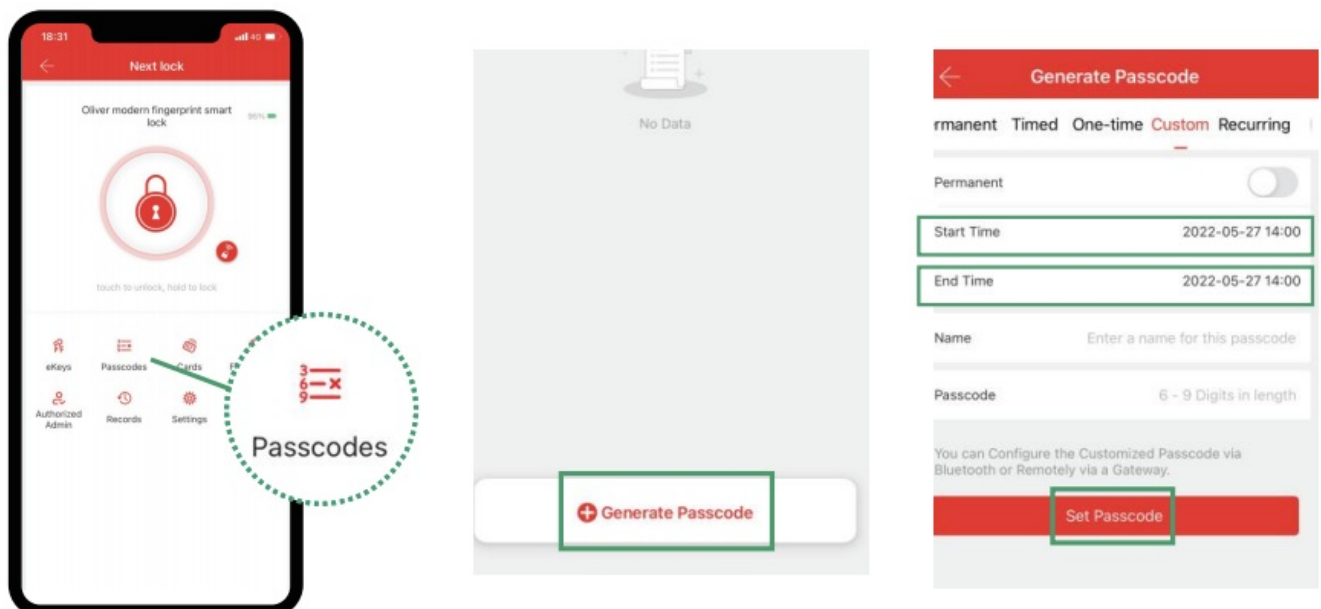
7. Share Passcodes

Step1: Click passcodes to code page.

Step2: Click generate passcode.

Step3: Name your code > set time duration > set 4-9 digits code> click generate(set passcode).

NOTE: To generate custom codes or change any type codes, please make sure you are nearby the lock within 3 meters and the bluetooth is turned on, unless you have the G2 gateway and it is connected.

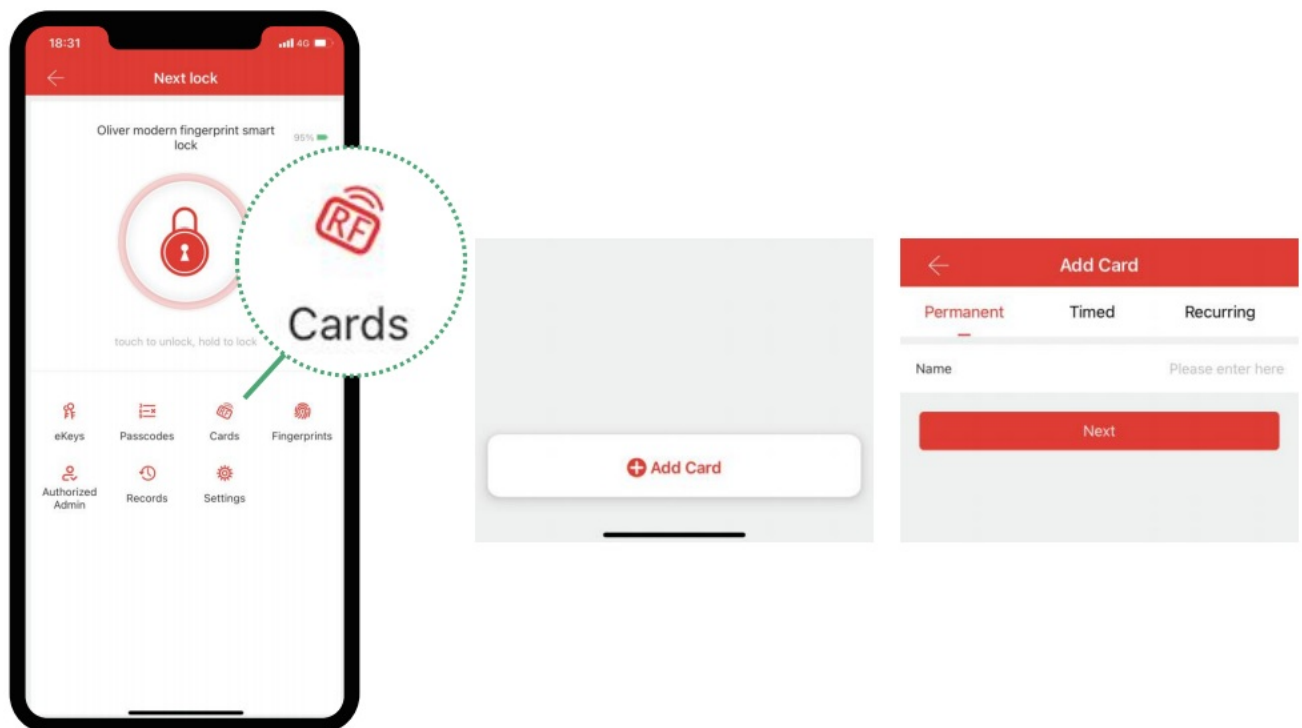


Here are some illustrations for 6 different codes.

Permanent	Lasts permanently
Timed	Lasts between selected hours
One-time Erase	Lasts for one use
Erase	Erases all codes on lock
Custom	Set your own digits such as 123456 (permanent or timed)
Recurring	Lasts during scheduled hours weekly

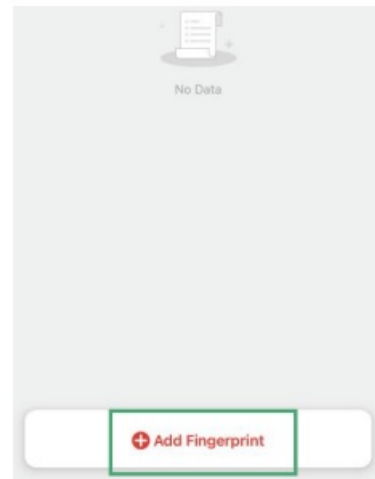
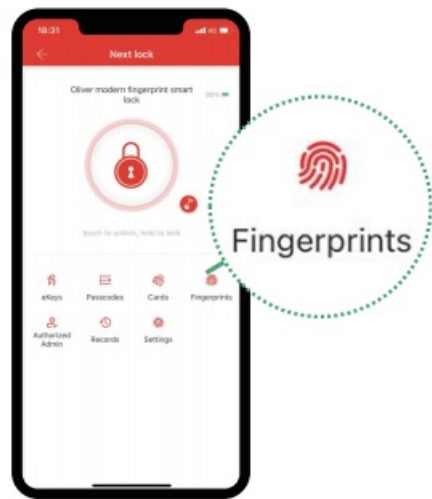
8. Set IC cards

1. Click "Cards".
2. Click "Add Card".
3. Set up the valid period of the IC card.
4. Once the lock says "Please swipe your card" > place the IC card against 5 on the keypad.
5. If you hear prompt voice "input successful", the IC card can be used to unlock your door.



9. Add Fingerprints

- Step1: Tap on "Fingerprints".
- Step2: Tap on "Add Fingerprints".
- Step3: Set up the validity period of the fingerprint.
- Step4: Follow instructions on app, you will be asked to place your finger on the sensor 4 times.



 The image shows a form titled 'Add Fingerprint'. It has three tabs: 'Permanent', 'Timed' (which is selected), and 'Recurring'. Below the tabs, there are three input fields: 'Name' with the placeholder text 'Please enter here', 'Start Time' with the value '2022-06-17 14:14', and 'End Time' with the value '2022-06-17 14:14'. At the bottom, there is a red button labeled 'Next'.


10. Authorized Admin

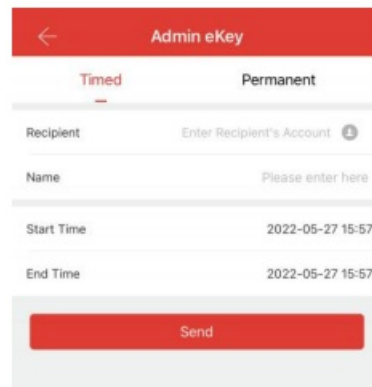
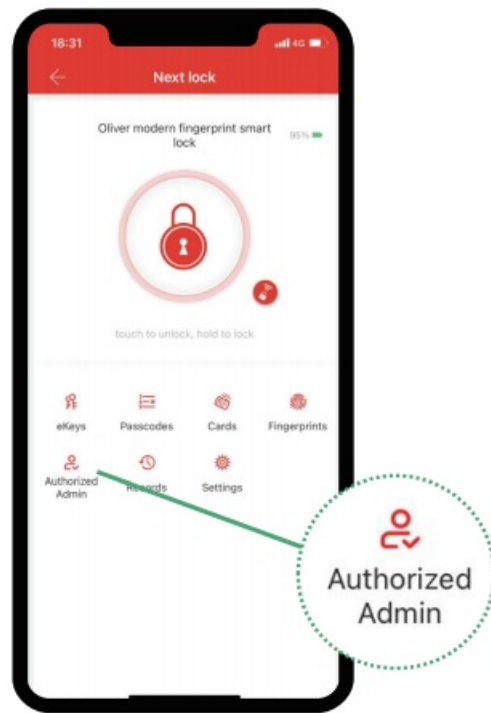
NOTE: Authorized Admin is similar to eKeys but has more rights than eKeys.

An authorized admin can do the following:'

1. Unlock/lock via the app.
2. Generate/edit/delete passcodes/IC card/fingerprints.
3. Adjust settings like passage mode, auto-lock timer, and turn on/off the lock sound.

Step1: Click Authorized Admin.

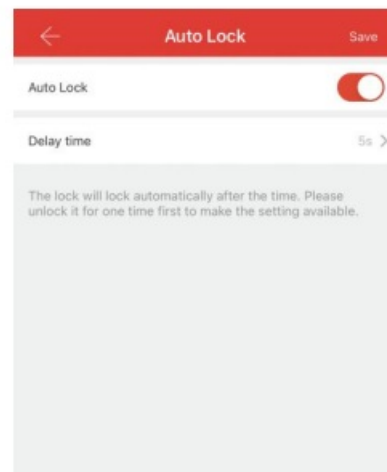
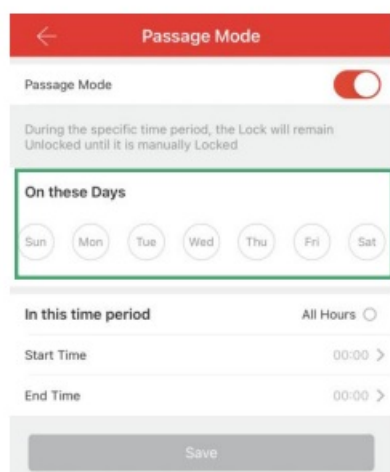
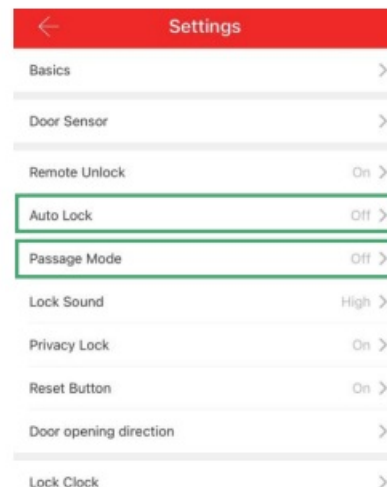
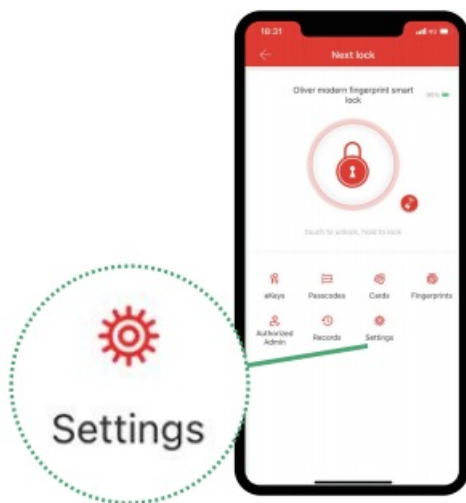
Step2: Enter recipient's account, it can be the phone number or email address used during registration.



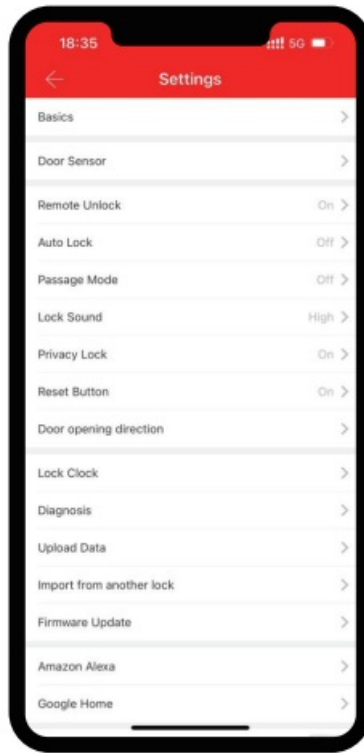
11. Auto Lock/ Passage Mode

Auto Lock: Tap "Settings" > Tap "Auto Lock" > Auto-lock will automatically lock the door when it has be opened after 5 seconds by default.

Passage Mode: Tap "Settings" > Tap "Passage Mode" > set up the specific time period > During the specific time period, the lock remain unlocked until it is manually locked(Auto lock will be disabled during Passage Mode validity period).



12. Lock Setting



Basic: You can view and Lock basic information, lock name etc.

Door Sensor: You will be able to get door status and auto-lock the door with a door sensor (Sold separately).

Remote Unlock: Allows you to unlock the smart lock remotely via a gateway (Sold separately). This feature can only be turned on/off via Bluetooth.

Lock Sound: Turn on/off the sound of the lock. Adjust the lock prompt voice volume.

Door opening direction: If your door lock/unlock result is opposite as expected, you can change this feature.

Import from another lock: Allows for the transfer of eKeys, authorized Admin, passcodes and IC cards from one lock to another.

Privacy Lock: Turn on/off via the reset button on the back panel. This function prevent someone unlock from outside.

Reset Button: Turn on/off the reset function via the reset button on the back panel.

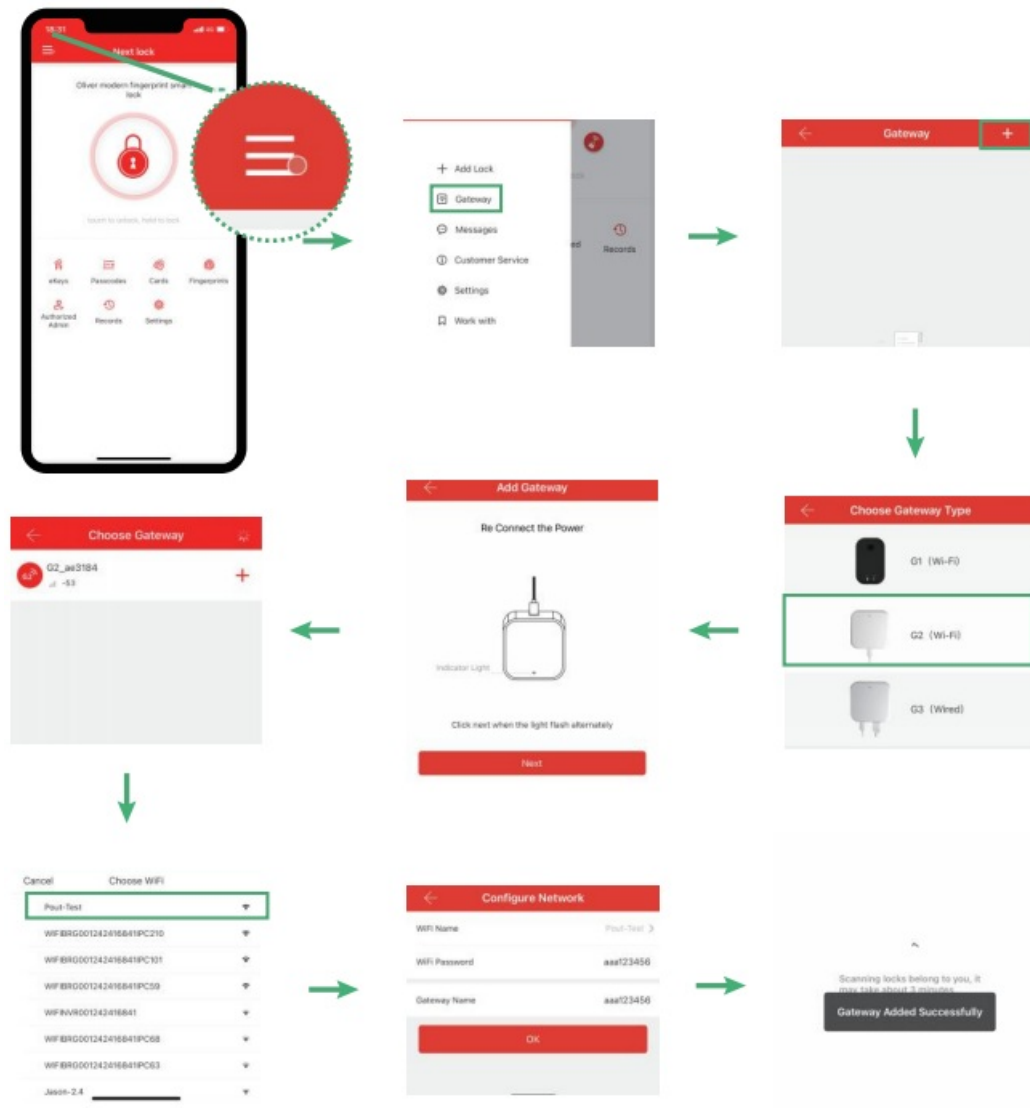
How to Pair Gateway, Alexa

1. Pair the Gateway

1. After pairing, check the signal: click "Gateway" > choose the gateway connected > Nearby locks > check if the signal is strong > move the gateway closer to lock if the signal is weak.

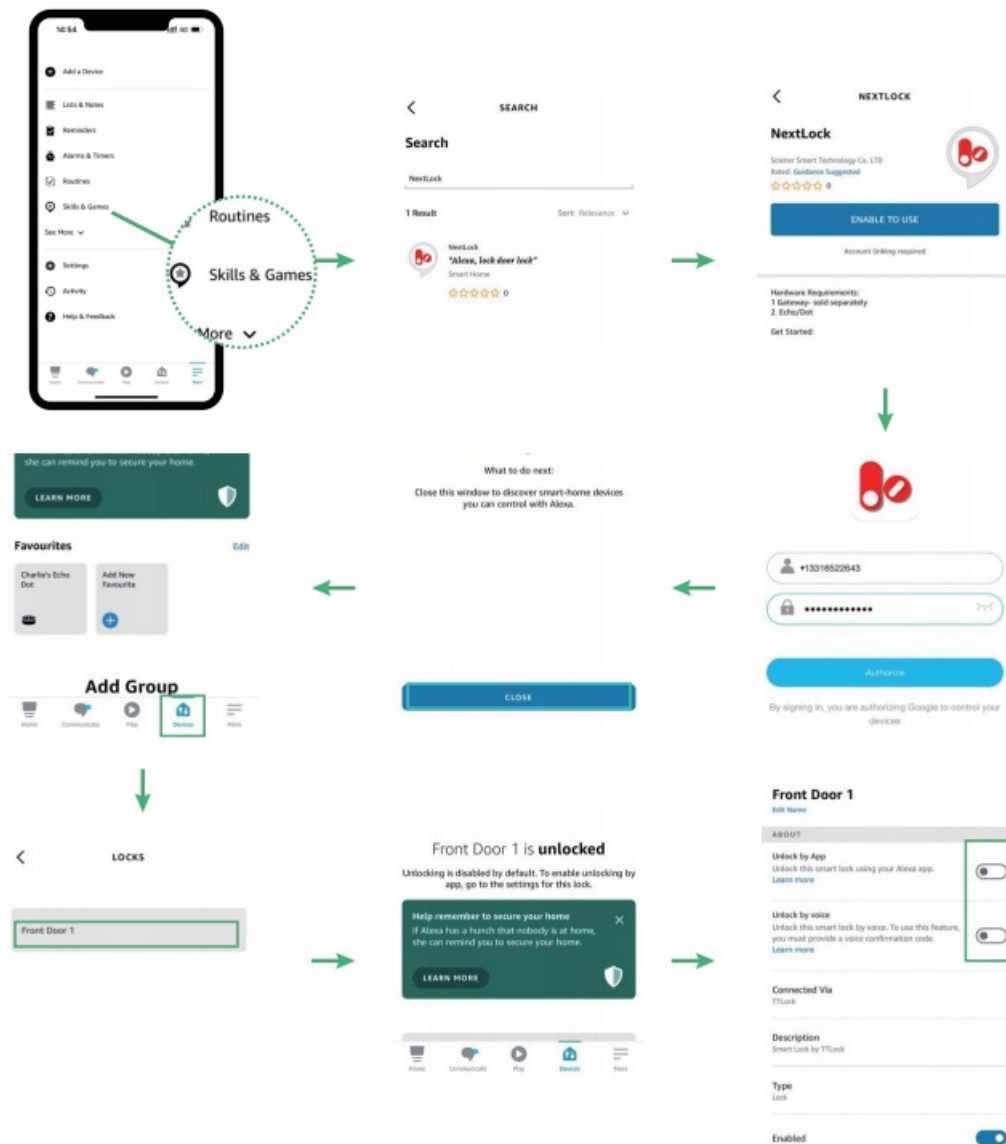
Please make sure the distance between the gateway and the smart lock is within 16feet, and make sure your phone and the gateway are connected to the same WiFi(The gateway only works with 2.4 GHz WiFi).

If you have 5G Wi-Fi, you can set and add 2.4Ghz Wi-Fi by dual band router.



2. Pair the Alexa

Hit setting (on the upper right)> Turn on the “unlock by voice”,
set the code for unlocking by voice every time.



How to Program by Keypad

* : Return to the previous step

: Press 1 second to confirm; long press for 2 seconds to lock the door Default admin passcode: 123456#

Type	Method
Modify Admin Passcode	A:*12#default admin passcode#new admin passcode#new admin passcode# B: Go to Next Lock App > Settings > Basics > Admin code > Modify New passcode
Set General Passcode =	*85#admin passcode#new passcode
Modify General Passcodes	*10#original passcode#new passcode#new passcode#
Set Fingerprints	*85#admin passcode#collect fingerprints
Set IC cards	*85#admin passcode#add IC cards
Delete all Passcodes	*71#admin passcode#(note: admin passcode won't be deleted)
Delete all Fingerprints	*70#admin passcode#
Delete all IC cards	*69#admin passcode#
Delete single passcode	*72#admin passcode#the passcode you want to delete#

Type	Method
Set left hand lock	Standing outside of the door(facing the keypad), if the door hinge is on the left side: *46#Admin Password#1#
Set right hand lock	Standing outside of the door(facing the keypad), if the door hinge is on the right side: *46#Admin Password#2#
Open the door temporarily	Input 123# after unlock the door
Auto Lock	*21#admin passcode#1-900#(1-900 seconds is the auto lock time)
Turn on Turn off the lock voice	*30#admin passcode#1#(turn on) #0#(turn off)
Set English as language	*39#admin passcode#2#

FAQ


1. Installation

Questions	Answers
How to adjust left or right hand door ?	A.Go to Next Lock App > setting > door opening direction > choose left or right hand door
How to modify passcode?	A.Go to Next Lock App > setting > basics > admin passcode>modify
How to set auto-lock timer?	A.Go to Next Lock App > setting > Auto lock > set timer B.After setting, lock the door from inside manually 1 time so it can be acticated. NOTE: Auto lock only trigged when you use digital unlock like fingerprint/keypad/Next Lock. It won't work if unlock manually.
How to make sure the door is open in a specific time?	A.Go to Next Lock App > setting > passage mode > set timer B.After setting, unlock the door from inside manually 1 time so it can be acticated. Note: passage mode only trigged when you use digital lock like fingerprint/keypad/Next Lock. It won't work if lock manually.
Why the deadbolt can't fully retracte d?	Please follow the steps to re-install the lock correctly.
When I unlock/lock the door by fingerprints or passcodes, the lock doesn't work?	Please check if the motor make sounds when you unlock or lock by keypad or fingerprints. If motor doesn't make sounds, please contact our customer service team.

Can I remotely share a guest passcode/share E-keyshare admin to visitors?	Yes, you can generate remotely and share the passcode/share e-Key /share admin to visitors even far away from the home (without Wi-Fi). NOTE: Only changing Custom Code needs to turn on the bluetooth and near to the lock or G2 gateway.
What if the batteries run out, can I still use the key to enter?	Yes, you can open the lock with a mechanical key, and you can also use a type-C cable connecting the lock to charge it.
Why can't I unlock/lock by Wi-Fi on the phone?	You can unlock/lock by bluetooth on the phone. Wi-Fi unlock/lock remotely require to purchase an extra G2 gateway (sold separately).
Why can't I connect it with Alexa or Google assistant?	A. Make sure you purchased the G2 gateway. (sold separately). B. Follow the steps to Connect the G2 gateway correctly, make sure the gateway status is 'online' and the signal is 'strong' (check this on Next Lock app). 3. Follow the steps to connect the Alexa or Google assistant correctly.
Fingerprints is not sensitive and seldom works.	A: Delete the fingerprint and add it again. B: Go to Next Lock App > fingerprints > choose to delete > add the new one. C: Completely put your finger on the reader and let it to collect more angles of your finger.
Why I can't register my account on Next Lock app with my phone number?	Please choose the country code as a prefix, for instance, United States country code is +1, then input your phone number.

Can not pair the lock with APP.	A: Turn on the Bluetooth and near your lock > Open the Next Lock App > Click "+" button > Choose "All Locks" > Touch the lock keypad to light up it > Click the "+" to add the lock while wake up the keypad. B: If no lock shows up (all gray), please reset your lock. C: Follow the above steps to add the lock again after the reset. NOTE: Reset steps can be found on page 9
After replacing the new battery, the App shows that the battery level is incorrect.	A: Go to Next Lock APP > Go to the Settings (main page) > Basics > Battery > Update. B: If it still fails, Open the Next Lock App > Click Settings > Click Basic > Lock Number, and send it to the customer service to update.
How to lock/unlock via keypad?	Lock: Wake up the keypad and press the # for 2 seconds. Unlock: Wake up the keypad, input passcodes#.
The lock works backwards. Lock turns unlock while unlock turns lock.	Go to Next Lock APP > Settings > Door opening direction > Open to right/left.

Documents / Resources

 The image shows the cover of the user manual for the NUTOMO M3 Smart Door Lock. It features the NUTOMO logo at the top, a central illustration of the door lock handle with a keypad, and the text 'USER MANUAL Smart Door Lock' at the bottom. A small version number 'Version: M3-M3S0000-REL100-00000000-0001-01' is visible at the very bottom.	<p>NUTOMO M3 Smart Door Lock Handle Sets Keyless [pdf] User Manual</p> <p>M3 Smart Door Lock Handle Sets Keyless, M3, Smart Door Lock Handle Sets Keyless, Door Lock Handle Sets Keyless, Lock Handle Sets Keyless, Handle Sets Keyless, Sets Keyless, Keyless</p>
---	--

References

- [User Manual](#)