



# NUTOMO Keyless Entry Keypad Door Lock with Handle User Manual

[Home](#) » [NUTOMO](#) » NUTOMO Keyless Entry Keypad Door Lock with Handle User Manual 

## Contents

- [1 NUTOMO Keyless Entry Keypad Door Lock with Handle](#)
- [2 PRODUCT DETAILS](#)
  - [2.1 Package Included](#)
  - [2.2 Product Overview](#)
  - [2.3 Specifications](#)
- [3 GETTING STARTED](#)
- [4 INSTALL THE LOCK](#)
- [5 HOW TO PROGRAM BY KEYPAD](#)
- [6 MORE FUNCTIONS](#)
- [7 Documents / Resources](#)
  - [7.1 References](#)
- [8 Related Posts](#)

# NUTOMO

**NUTOMO Keyless Entry Keypad Door Lock with Handle**



## Letter of thanks to clients

Hi dear client,

First of all, thank you so much for choosing the NUTOMO brand among plenty of products.

NUTOMO aims at the “safe, simple, smart life”. NUTOMO has its own manufactory and mainly produces locks selling all around the world, such as United States, Europe, Japan, etc.

Further, all products are the most assuring products selected after countless uses, tests, and personal experiences of staff. Up to now, we have also received the encouragement and love of numerous customers, for which we are also very grateful. In the future, all staff of our company will work harder and NUTOMO will always study and integrate the world’s most cutting-edge technology into our products that will exceed customers’ expectations. We are also very willing to listen to every customer’s opinions and advice to make more improvements and efforts in the future.

Last but not least, if you have any issues such as installation or suggestions about the product, please do not hesitate to contact us by phone or email at any time, “Customer foremost” will always be our constant principle. Wish you all the best and luck. Please continue to support NUTOMO in the future, thank you~

## PRODUCT DETAILS

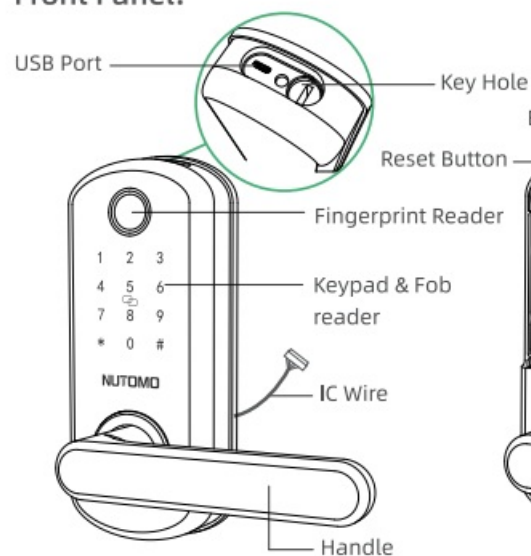
### Package Included



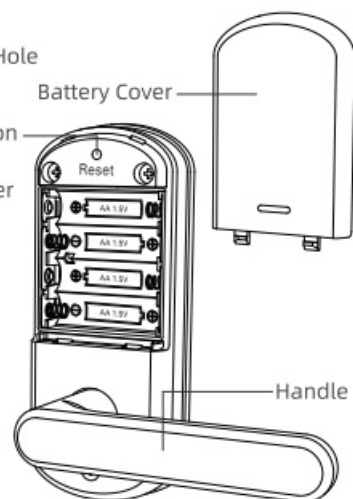
## Product Overview

### Front Panel:

#### Front Panel:



#### Back Panel:



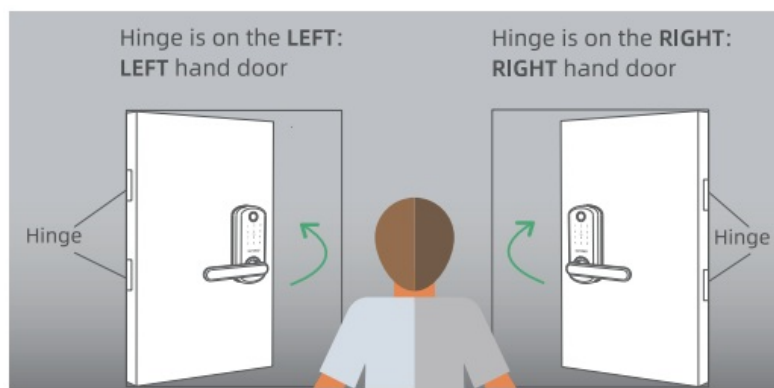
## Specifications

Material	Alloy
Power Supply	4pcs AA Batteries (Not provided)
Operating Temp Range	-13°F~149°F
Unlock Ways	Keys, Passwords, Fingerprints and IC Cards
Password Digits	6-10 Digits
Passwords Storage	300
Fingerprints Storage	100
IC Cards Storage	299
IC Cards Type	13.56Mhz

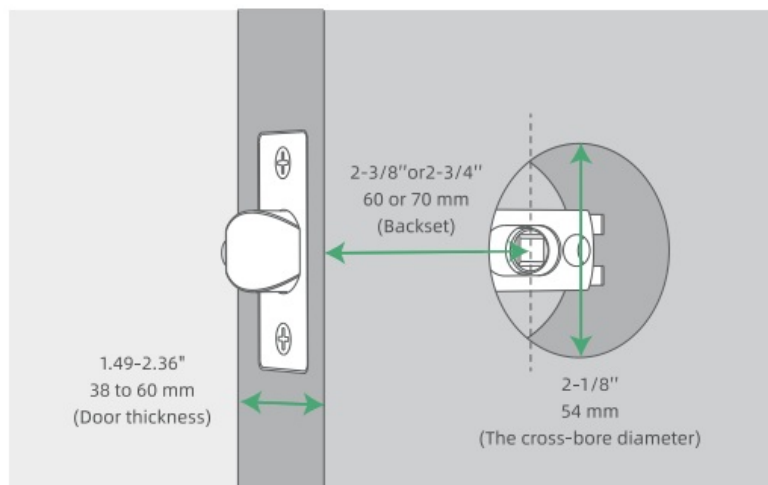
## GETTING STARTED

### 1. Identify Left/Right-Hand Door

Stand by OUTSIDE facing the keypad.

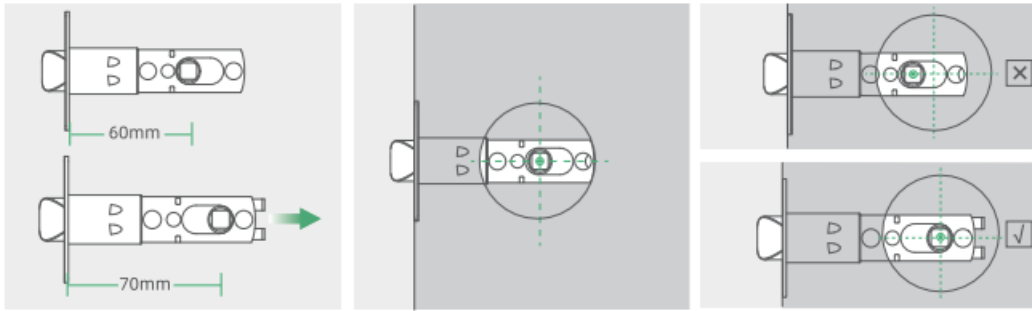


### 2. Check Door Measurements



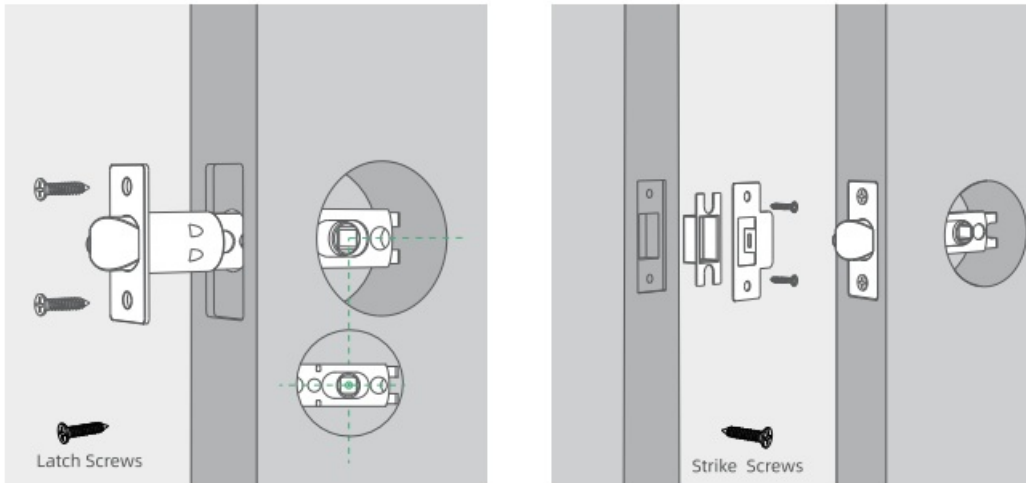
## INSTALL THE LOCK

### 1. Adjust the Latch



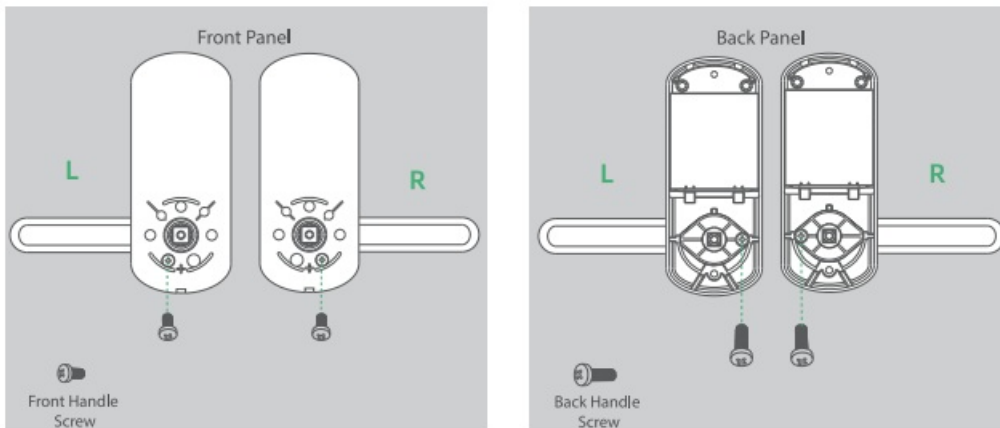
- **A** Measuring if the latch is long enough, pull it to adjust from 60mm to 70mm.
- **B** If the 'square' latch hole is centered in the door hole, no need to adjust.
- **C** If not, adjust it until it is centered.

## 2. Install the Latch and Strike Plate



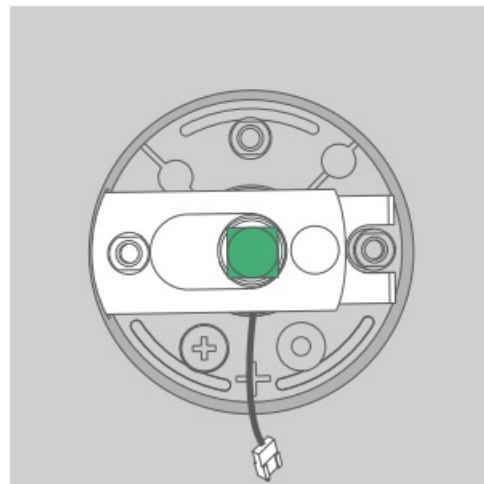
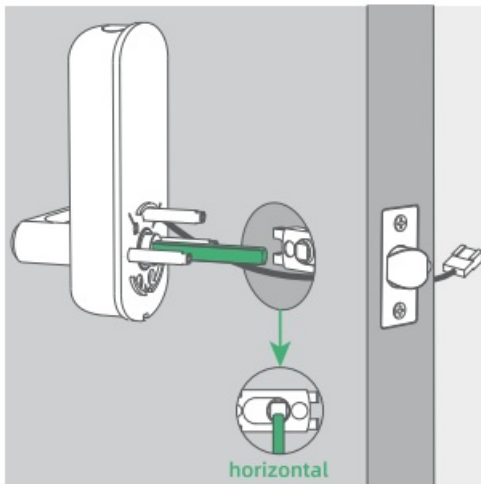
- Insert the latch and keep the latch square hole horizontal.
- Use related screws to tight up.

## 3. Adjust the Handle Direction



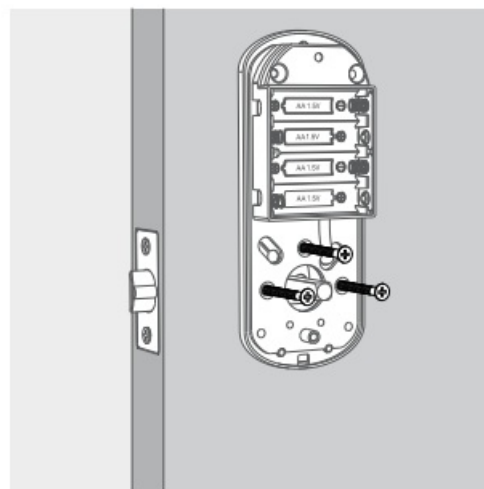
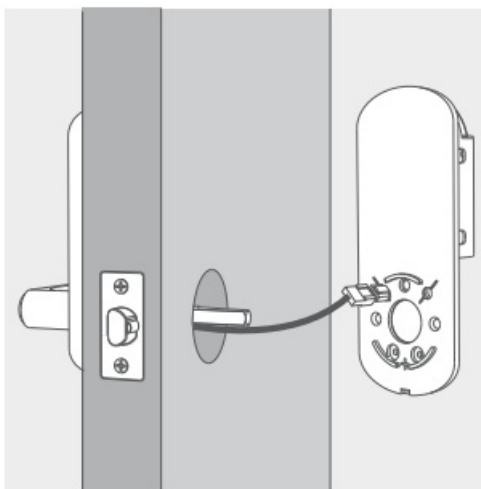
- Left Hand Door: Turn the front handle to Left and turn the back handle to Right.  
Right Hand Door: Turn the front handle to Right and turn the back handle to Left.
- After the adjustment, tighten the screws according to the pictures in the corresponding direction.

## 4. Install the Front Panel



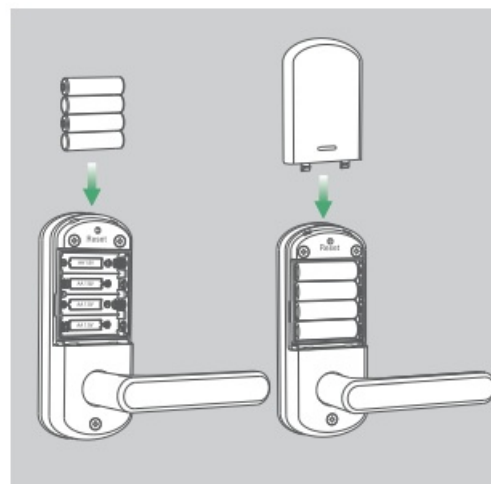
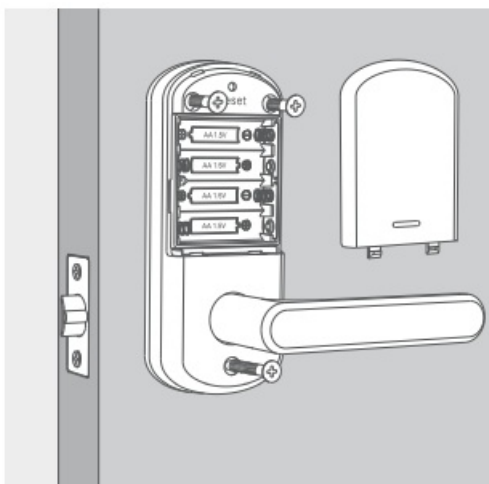
- Insert the flat ruler and keep it horizontal.
- The IC wire needs to pass under the latch.

#### 5. Route the IC Wire & Install the Mounting Plate



- Connect the IC wire of front and back panel.
- Tighten up 3\*mounting plate screws to fix the mounting plate. Note: If the thickness of your door is greater than 48 mm, please use longer screws.

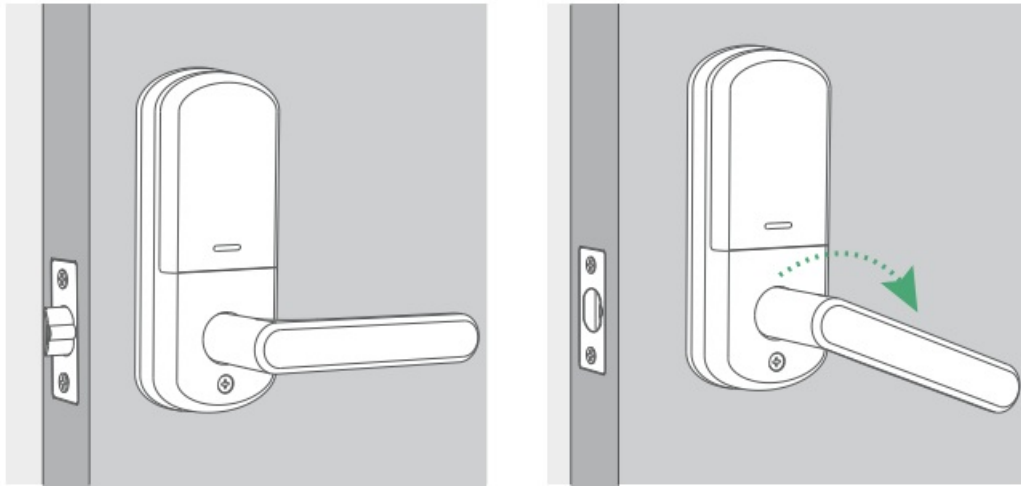
#### 6. Install the Back Panel



Tighten the 3\*back panel screws.

- Install the batteries and cover.

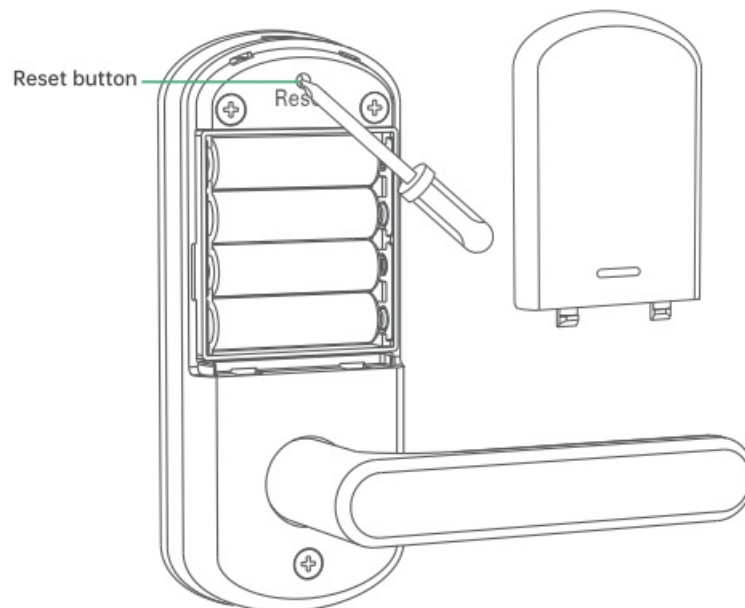
#### 7. Test



- Press the handle of the back panel to see whether the latch can retract normally.
- Before the administrator password is set (in reset mode), any password /fingerprint/ IC card can unlock.
- Enter 6-1 0 digits end with# to unlock, it will auto-lock within 5s.

#### 8. How to reset

- Remove the battery cover when powered on, press and hold the reset button for about 5s, and release it after hearing the voice “Initializing”.
- When you hear “succeed” it indicates that the reset is successful. (any 6-1 0 digits password /fingerprint/ IC card can be unlocked now.)
- If you don't have a screwdriver or tool of sufficient size to press the reset button, you can remove the back panel and hold the reset button directly (also ensure that it is powered on).



## HOW TO PROGRAM BY KEYPAD

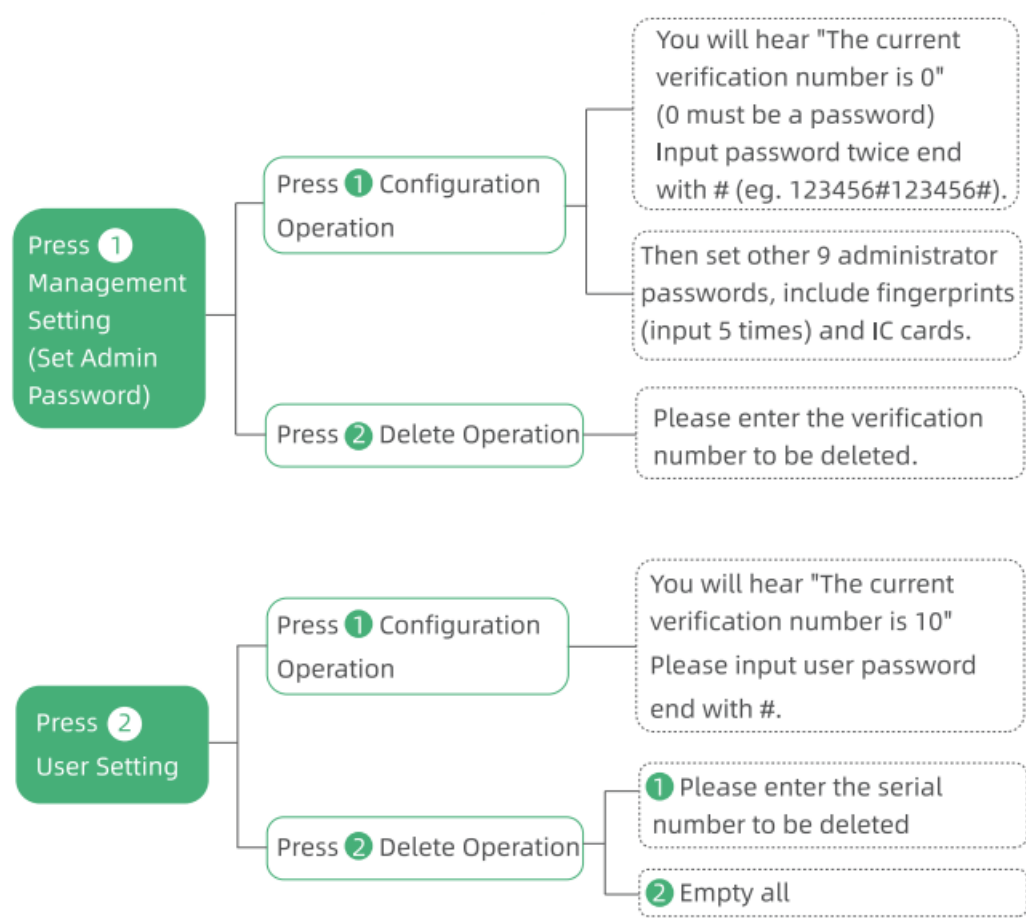
### Notes:

- The[\*] on the keypad can be used to return to the previous menu, clear the input content, and exit the system/menu.
- The[#] on the keypad is used to operate all entered confirmation keys and doorbell functions.
- Wake up the keypad and enter[\* #] to enter the menu.

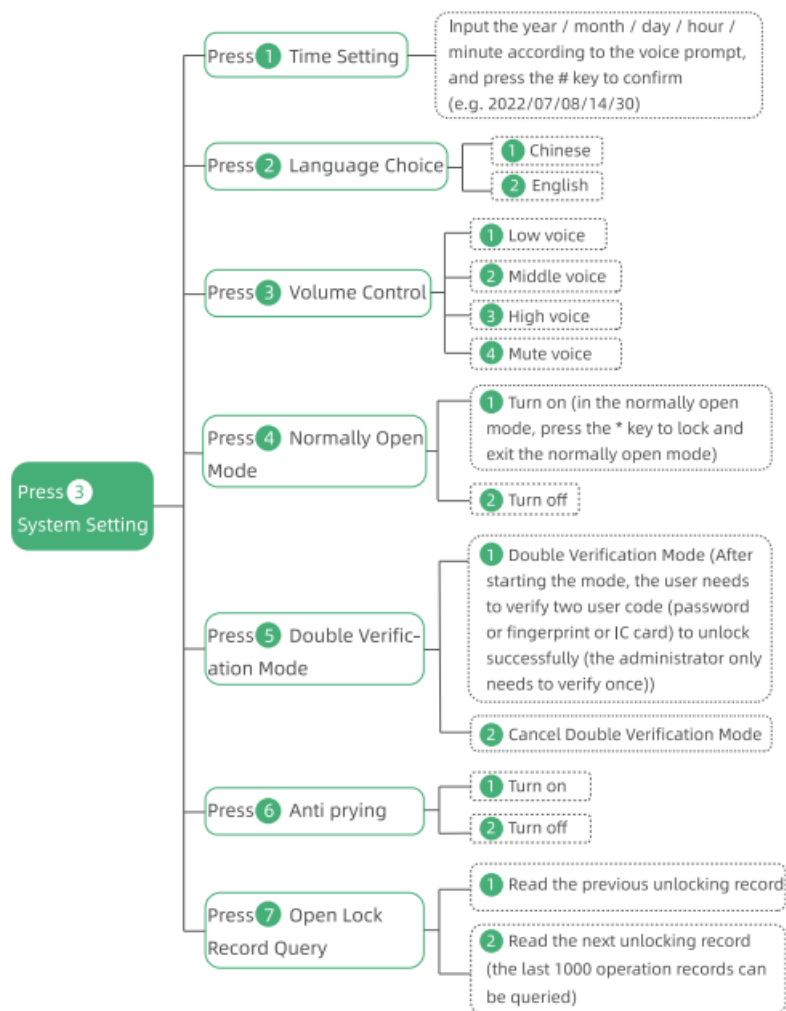
(After having the administrator password, you need to enter the “\*#+ administrator password#” to enter the

menu.)

Press[\*#] to enter the menu







## MORE FUNCTIONS

### 1. Doorbell

After waking up the keypad, press#, and the doorbell will sound three times.

### 2. Low Battery Alarm

When the battery is low, every time you wake up the keypad, there will be a voice reminder that the battery is low, and please replace the battery.

### 3. Password Input Error Protection


Enter the wrong password 5 times in a row and enter the locked state for 3 minutes (the keypad cannot be woken up in the locked state, and an alarm will sound when you touch the keypad).

## AFTER-SALES CONTACT INFORMATION

E-mail: [Honestrend@hhnest.com](mailto:Honestrend@hhnest.com)

Toll Free: (888) 988-2118

(Available from 6:00pm-8:00am in Pacific Time)

 <p>NUTOMO</p> <p>USER MANUAL</p>	<p><a href="#">NUTOMO Keyless Entry Keypad Door Lock with Handle</a> [pdf] User Manual</p> <p>Keyless Entry Keypad Door Lock with Handle, Keyless, Entry Keypad Door Lock with Handle, Keypad Door Lock with Handle, Door Lock with Handle, Lock with Handle</p>
--	--

References

- [User Manual](#)