

Nureva HDL300 Sound Location Sata Enable Tracking for Lumens PTZ Cameras User Guide

[Home](#) » [nureva](#) » Nureva HDL300 Sound Location Sata Enable Tracking for Lumens PTZ Cameras User Guide 

Contents

- [1 Nureva HDL300 Sound Location Sata Enable Tracking for Lumens PTZ Camera](#)
- [2 Product Usage Instructions](#)
- [3 Hardware Connections](#)
- [4 Install Nureva Console client](#)
- [5 Set angle positions](#)
- [6 Documents / Resources](#)
 - [6.1 References](#)
- [7 Related Posts](#)



Nureva HDL300 Sound Location Sata Enable Tracking for Lumens PTZ Camera



Specifications

- **Product:** Nureva HDL300
- **Hardware Connections:**
 - Nureva HDL300 Microphone
 - Cables: Cat5e, HDMI, USB 2.0
 - HDL300 Connect Module
 - CamConnect Processor (AI-BOX1)
 - Display
 - Meeting Room PC (Windows OS)
 - Lumens PTZ Camera

Product Usage Instructions

Hardware Connections

Ensure all hardware components are connected as follows:

- Connect Nureva HDL300 Microphone using the provided cables.
- Connect HDL300 Connect Module to the CamConnect Processor and Display.
- Connect Meeting Room PC to the Display.
- Set up Lumens PTZ Camera for video integration.

Install Nureva Console Client

Follow these steps to install and set up the Nureva Console client:

1. Download the Console Client from [here](#).
2. Install the Console client and launch the app on your PC.
3. Connect the Nureva Connect Module to the PC using a USB cable.

Set up Nureva HDL300 Integration

To integrate the Nureva HDL300 with the Console client:

- Pull down the vertical scroll bar in the Console client.
- Go to 'Integrations' and expand 'Local Integrations'.

Setup Camera Tracking Integration

Follow these steps to set up camera tracking integration:

- Enable 'Network Integration Settings'.
- Enter the Nureva device's IP address and apply the settings.
- Confirm that port 8931 is allowed to connect with your PC.

Set Angle Position

To adjust the angle positions of the Nureva HDL300:

- The maximum Azimuth Angle range is -70 to +70 degrees.
- 0 degrees represents the center point.
- Refer to the diagram provided for sound source detection in the 0-degree region.

Frequently Asked Questions (FAQ)

• Q: What cables are required for connecting the Nureva HDL300 Microphone?

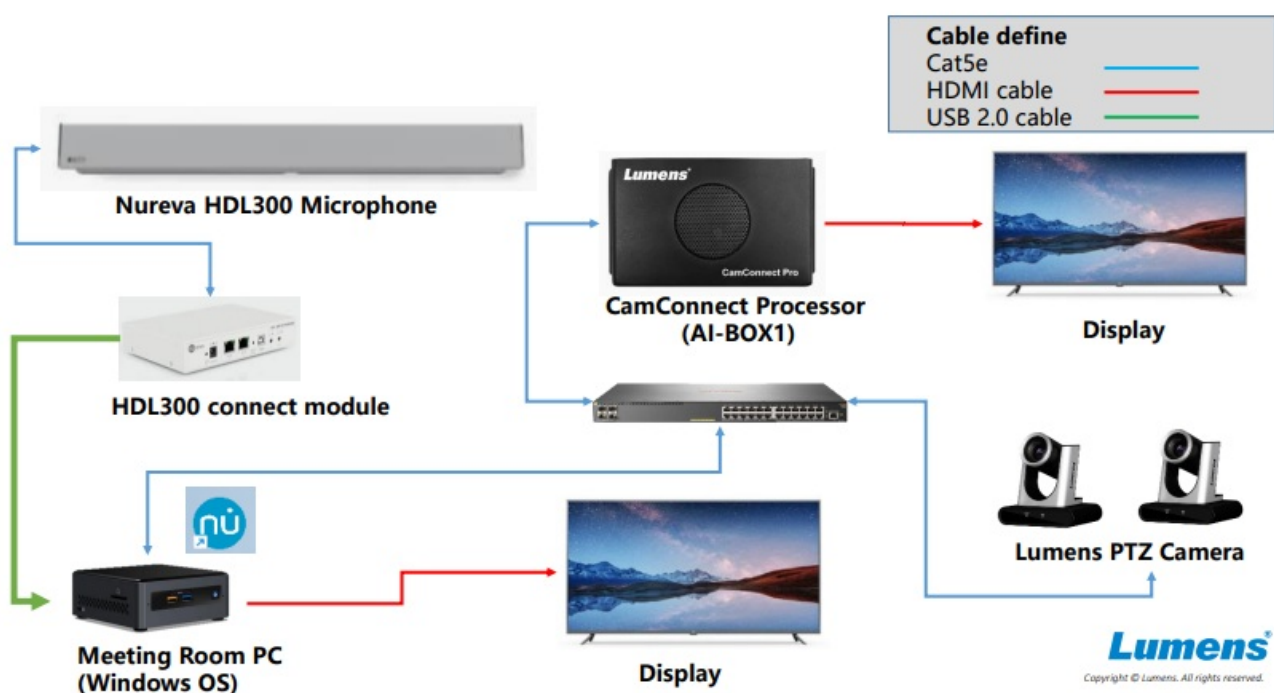
A: The Nureva HDL300 Microphone requires Cat5e, HDMI, and USB 2.0 cables for connection.

• Q: What is the IP port used by the Nureva HDL300 device for integration?

A: The default port used by Nureva HDL300 is 8931. Please ensure this port is permitted on your PC for connectivity.

Nureva HDL300 Settings Guide

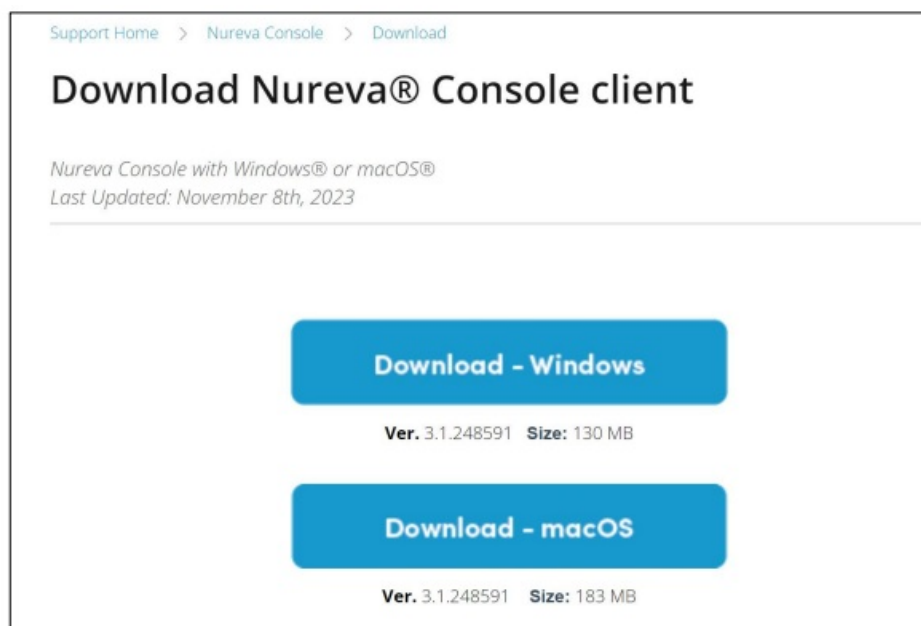
Hardware Connections



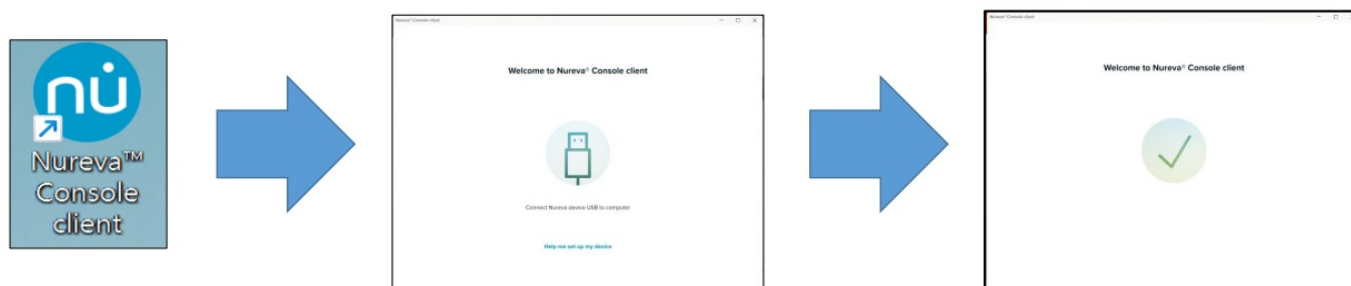
Install Nureva Console client

Download [Console Client]

<https://support.nureva.com/97341-download/win-mac-download-nureva-console-client>

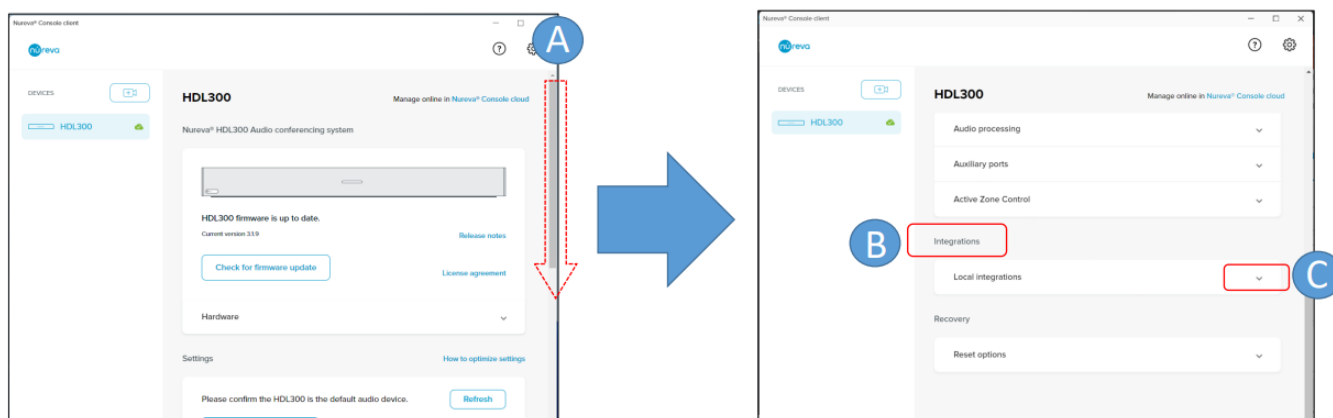


Set up Nureva Console client



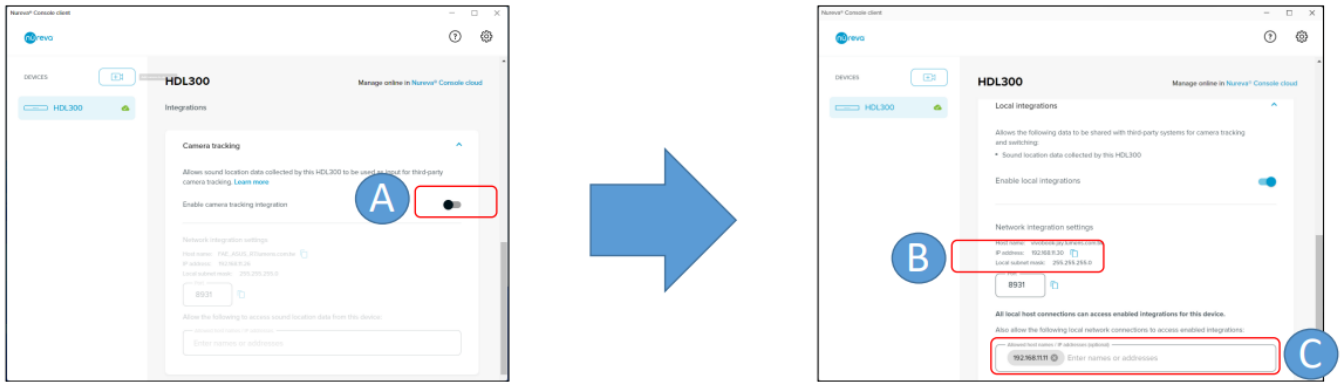
- Install Nureva Console client then launch the Console client app. Connect the Nureva connect module to the PC with a USB cable.

Set up Nureva HDL300 integration



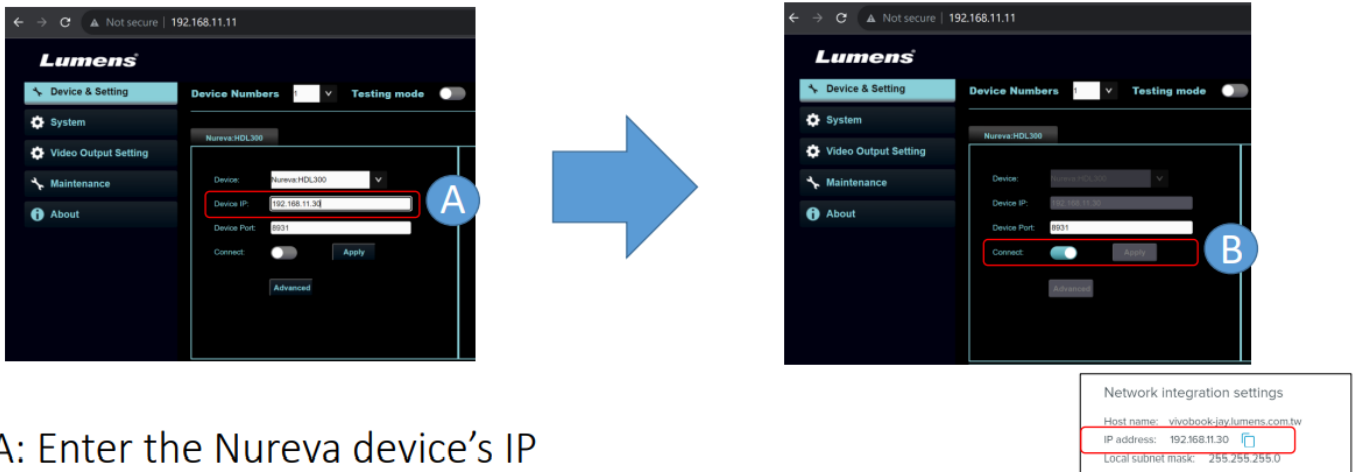
- A: Pull the vertical scroll bar of the Console client down
- B: Go to the 'Integrations' option and expand [Local integrations]

Setup camera tracking integration



- A: Enable [Network integration settings]
- B: Copy the IP address (C)

Setup camera tracking integration

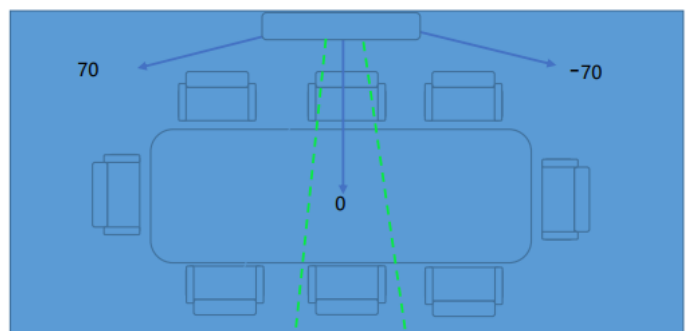
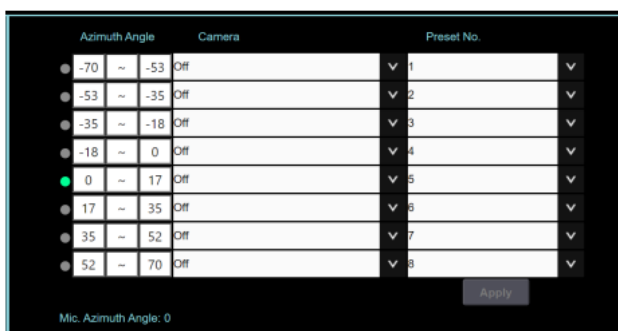


A: Enter the Nureva device's IP

- A: Enter the Nureva device's IP
- B: Press [Apply] and the toggle [connect] bar to enable
- Nureva's default port is 8931. Please confirm the port is permitted to connect with your PC.


Set angle positions

Set angle positions



Note: The maximum “Azimuth Angle” range is -70 to +70 degrees. 0-degrees is the center point. The diagram above shows a sound source detected in the 0-degree region.
Copyright © Lumens. All rights reserved.

Documents / Resources

	Nureva HDL300 Sound Location Sata Enable Tracking for Lumens PTZ Cameras [pdf] Use r Guide RM-CG, AI-BOX1, Lumens PTZ Camera, HDL300 Sound Location Sata Enable Tracking for Lu mens PTZ Cameras, HDL300, Sound Location Sata Enable Tracking for Lumens PTZ Cameras, Sata Enable Tracking for Lumens PTZ Cameras, Tracking for Lumens PTZ Cameras, Lumens PTZ Cameras, PTZ Cameras
---	--

References

- [User Manual](#)

[Manuals+](#), [Privacy Policy](#)

This website is an independent publication and is neither affiliated with nor endorsed by any of the trademark owners. The "Bluetooth®" word mark and logos are registered trademarks owned by Bluetooth SIG, Inc. The "Wi-Fi®" word mark and logos are registered trademarks owned by the Wi-Fi Alliance. Any use of these marks on this website does not imply any affiliation with or endorsement.