

NUPRIME Audio Stream 9 Reference Class Network Streamer



# NUPRIME Audio Stream 9 Reference Class Network Streamer User Manual

[Home](#) » [NUPRIME](#) » NUPRIME Audio Stream 9 Reference Class Network Streamer User Manual 

## Contents

- 1 Audio Stream 9 Reference Class Network Streamer
- 2 FCC NOTICE – DECLARATION OF CONFORMITY INFORMATION
- 3 SAFETY INSTRUCTIONS
- 4 WIRELESS AUTO SETUP
- 5 CONTROLLING MULTIPLE STREAM-9 AND RE -STREAMING
- 6 INTRODUCTION
- 7 SPECIFICATIONS
- 8 IDENTIFICATION OF CONTROLS
- 9 STANDBY DISPLAY MENU
- 10 Official Reference Combination
- 11 LIMITED WARRANTY
- 12 OBTAINING WARRANTY SERVICE
- 13 EXCLUSIONS AND LIMITATIONS
- 14 Documents / Resources
  - 14.1 References
- 15 Related Posts



**Audio Stream 9 Reference Class Network Streamer**



## FCC NOTICE – DECLARATION OF CONFORMITY INFORMATION

This equipment has been tested and found to comply with the limits for a Class B digital device, pursuant to part 15 of the FCC Rules. These limits are designed to provide reasonable protection against harmful interference in a residential installation. This equipment uses and can radiate radio frequency energy and, if not installed and used in accordance with the instructions, may cause harmful interference to radio communications.

However, there is no guarantee that interference will not occur in a particular installation. If this equipment does cause harmful interference to radio or television reception, which can be determined by turning the equipment on and on, the user is encouraged to try to correct the interference by one or more of the following measures:

- Reorient or relocate the receiving antenna .
- Increase the separation between the equipment and the receiver .
- Connect the equipment into an outlet on a circuit different from that to which the receiver is connected.
- Consult the dealer or an experienced radio/TV technician for help.

**WARNING:** Only peripherals complying with the FCC class B limits may be attached to this equipment.

Changes or modifications made to this equipment, not expressly approved by us or parties authorized by us could void the user's authority to operate the equipment. This device complies with part 15 of the FCC Rules. Operation is subject to the following two conditions: (

1. This device may not cause harmful interference, and
2. this device must accept any interference received, including interference that may cause undesired operation.

## EU DECLARATION OF CONFORMITY



C E Hereby, N uPrime Audio, Inc. declares that this device is in compliance with the essential requirements and other relevant provisions of Directive 2004/108/EC.

The manufacturer of this product is NuPrime Audio, Inc., 1712 Pioneer Ave. Ste 1817, Cheyenne, Wyoming 82001, USA.

The Authorized Representative for EMC and product safety is Nu Prime Audio, Inc., 1712 Pioneer Ave. Ste 1817, Cheyenne, Wyoming 82001, USA.

For any service or guarantee matters please refer to the addresses given in separate service or guarantee documents.

## **For Customers in Europe**

Disposal of Old Electrical & Electronic Equipment (Applicable in the European Union and other European countries with separate collection systems)

This symbol on the product or on its packaging indicates that this product shall not be treated as household waste. Instead it shall be handed over to the applicable collection point for the recycling of electrical and electronic equipment. By ensuring this product is disposed of correctly, you will help prevent potential – negative consequences for the environment and human health, which could otherwise be caused by inappropriate waste handling of the product. The recycling of materials will help to conserve natural resources. For more detailed information about recycling of this product, please contact your local Civic Office, your household waste disposal service or the shop where you purchased the product.

## **SAFETY INSTRUCTIONS**

There are two categories of Safety Instructions included in this manual:

- Product Warnings, (i.e., what must never be done to assure avoiding those hazards that
- could cause bodily injury or property damage); and
- User Directions (i.e., what must always be done to assure the safe use of your device).

The Safety Instructions contained in this manual have been categorized in accordance with the seriousness of the potential hazards through the use of Signal Words. Those Signal Words, and their intended meanings, are as follows:

**DANGER:** Indicates that a failure to observe the Safety Instructions could result in death or catastrophic bodily injury.

**WARNING:** Indicates that a failure to observe the Safety Instructions could result in serious bodily injury.

**CAUTION:** Indicates that a failure to observe the Safety Instructions could result in minor bodily injury or property damage.

**NOTE:** Designates important information that relates to activities and/or conditions that might result in loss of data and/or damage to your device.

### **Safe Use and Operation of Your Device**

This equipment emits stray RF energy and will interfere with the reception of signals by airborne electronic navigational devices or medical devices. Do not operate this equipment near any sensitive medical devices.

**WARNING:** Use only grounded AC power cords.

Always immediately disconnect the power to the equipment in the event the device emits an unusual odor or sound or generates smoke.

- **WARNING:** Never attempt to disassemble, repair or make any modification to your device. Disassembly, modification or any attempt at repair could cause bodily injury or property damage, as well as damage to the device itself.
- **WARNING:** Your device is not a toy. Never allow children to play with your device. Misuse, rough or improper handling of your device by children could result in serious bodily injury for any of the enumerated safety warnings in this manual. In addition, always keep all accessories and
- components out of the reach of small children as small parts might present a choking hazard. Seek immediate medical attention if choking occurs or if any small part has been swallowed.

- **CAUTION:** Never raise the sound volume level too high when using your device with earphones. An excessive sound volume level could cause damage to your hearing.
- **WARNING:** To reduce the risk of fire or electric shock, do not expose the unit to moisture or water.
- Do not allow foreign objects to get into the enclosure. If the unit is exposed to moisture, or a foreign object gets into the enclosure, immediately disconnect the power cord from the wall. Take the unit to a qualified service person for inspection and necessary repairs.
- Read all the instructions before connecting or operating the component.
- Keep this manual so you can refer to these safety instructions.
- Heed all warnings and safety information in these instructions and on the product itself. Follow all operating instructions.
- Do not use this unit near water.
- You must allow a minimum 10 cm or 4 inches of unobstructed clearance around the unit. Do not place the unit on a bed, sofa, rug, or similar surface that could block the ventilation openings. If the unit is placed in a bookcase or cabinet, there must be ventilation of the cabinet to allow proper cooling.
- Keep the component away from radiators, heat registers, stoves, or any other appliance that produces heat.
- The unit must be connected to a power supply only of the type and voltage specified on the rear panel. Connect the component to the power outlet only with the supplied power supply cable or an exact equivalent. Do not modify the supplied cable.
- Do not route the power cord where it will be crushed, pinched, bent, exposed to heat, or damaged in any way. Pay particular attention to the power cord at the plug and where the cord exits the back of the unit.
- The power cord should be unplugged from the wall outlet during a lightning storm or if the unit is to be left unused for a long period of time.

**Immediately stop using the component and have it inspected and/or serviced by a qualified service agency if:**

- The power supply cord or plug has been damaged .
- Objects have fallen or liquid has been spilled into the unit .  
The unit has been exposed to rain .
- The unit shows signs of improper operation .
- The unit has been dropped or damaged in any way

## **WHAT'S IN THE BOX**

- STREAM-9 xl
- Main power cordxl
- Metal remote-controlxl
- User manual
- Wi-Fi & Bluetooth antennaxl
- HDMI Cable for 1 2sxlFollow the Quick Setup Guide to help you get started with your STREAM-9.

## **SAVE THE PACKAGING**

Please save the box and the packaging that came with the STREAM-9. Should you move or need to transport your STREAM-9, this is the safest container to use.

## FACTORY RESET

STREAM-9 can be restored to factory default settings by pressing and holding the RED button at the rear panel for 5 seconds.

## QUICK SETUP GUIDE

Your STREAM-9 can be connected to your home network via a wired or wireless connection.

## IMPORTANT!

- For wired and wireless connection to be established, ensure that a broadband router that supports Ethernet and Wi-Fi standards is set up and available.
- Use tablets, smartphones, and other applicable devices that support iOS (Apple) or Android operating systems as mobile device controllers. These devices are not supplied with your STREAM-9.
- Download and install the Omnia Receiver App to your iOS device from the App Store or your Android device from the Google Play Store.
- Always ensure that your STREAM-9 is updated with the latest firmware. Go to the STREAM-9 product page at [nuprimeaudio.com](http://nuprimeaudio.com) for firmware update information.

## WIRED CONNECTION

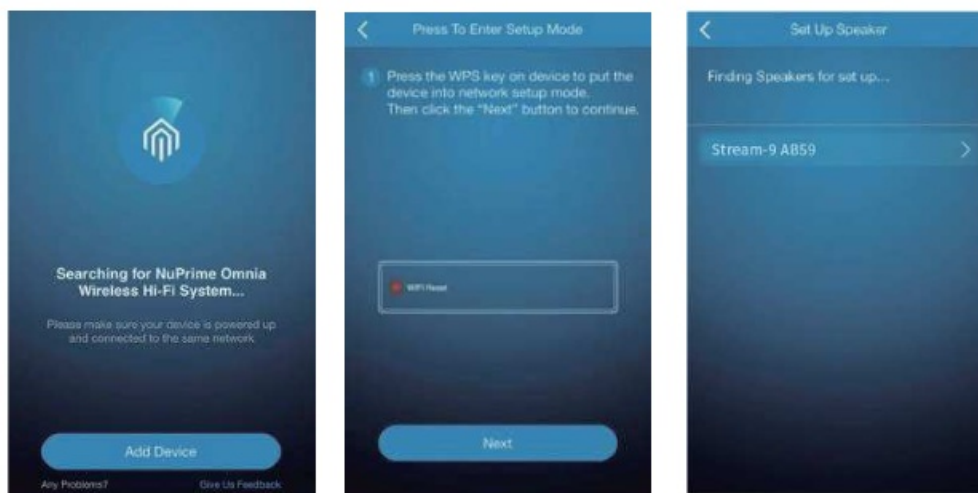
Using an ethernet cable (not supplied), connect one end to STREAM-9's LAN port and the other end directly to your wired network or router.

### POWER UP STREAM-9

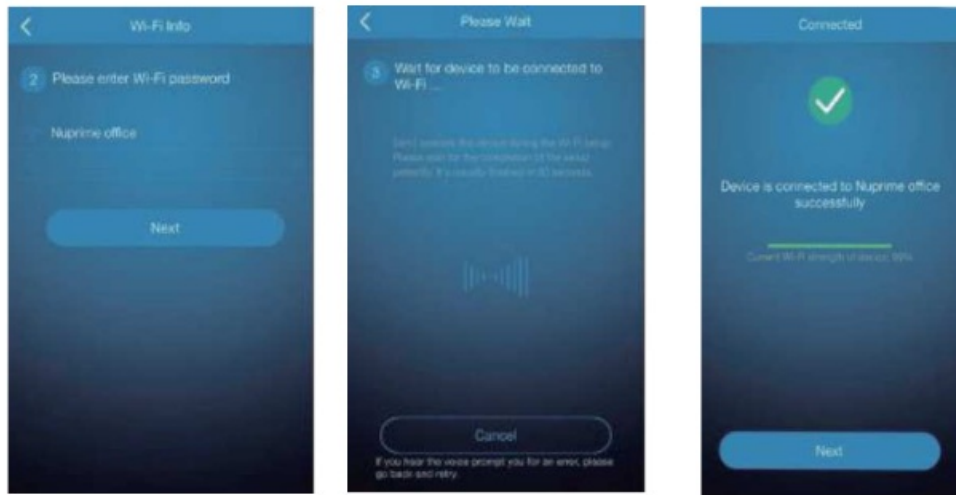
Turn on STREAM-9 Press the red button on the rear panel once When first launch (do not press and hold).

## WIRELESS AUTO SETUP

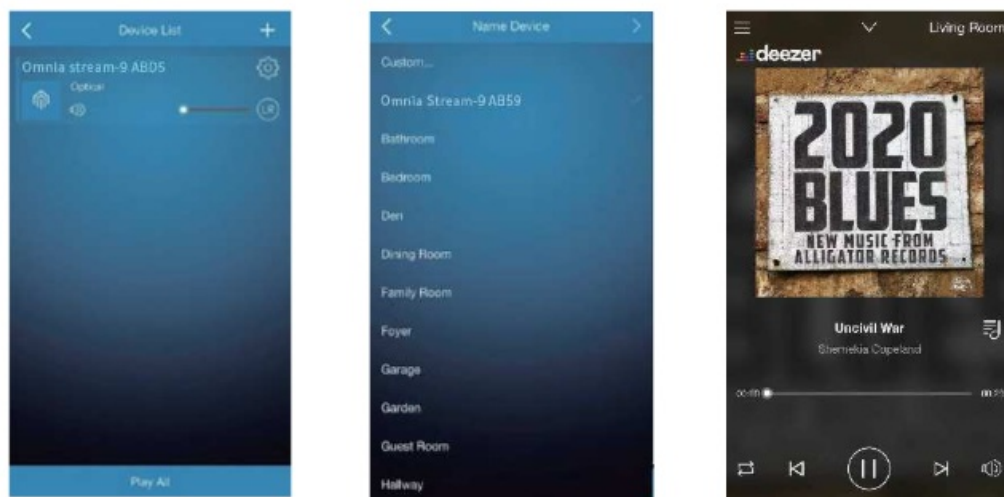
1. When you first launch the Omnia Receiver app, it will automatically search for the STREAM-9. If it does not detect any compatible devices, the app will show the following screen:
2. If you haven't pressed the red button on the rear panel once (do not press and hold) after power on, do it now.
3. Select STREAM-9 device (the Omnia Receiver app called all receiving devices as Speaker).



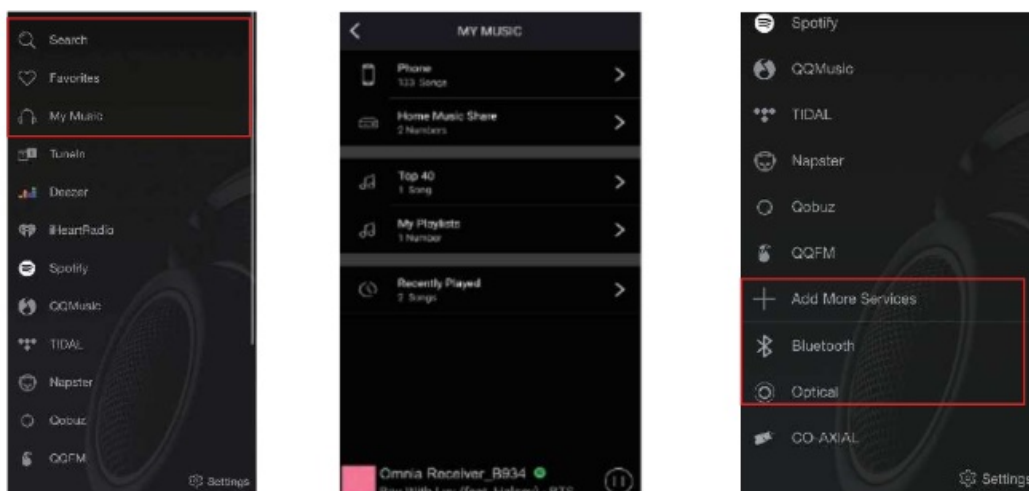
4. Configure Wi-Fi setup on STREAM-9 by selecting the same SSID of the Wi-Fi network on your mobile device.
5. Wait for the STREAM-9 to connect to the selected Wi-Fi network.
6. Device is connected.



7. Name your device.
8. Pick from a list of standard room names or create your own.
9. Play music using the Nu Prime Omnia App as a functional remote control.

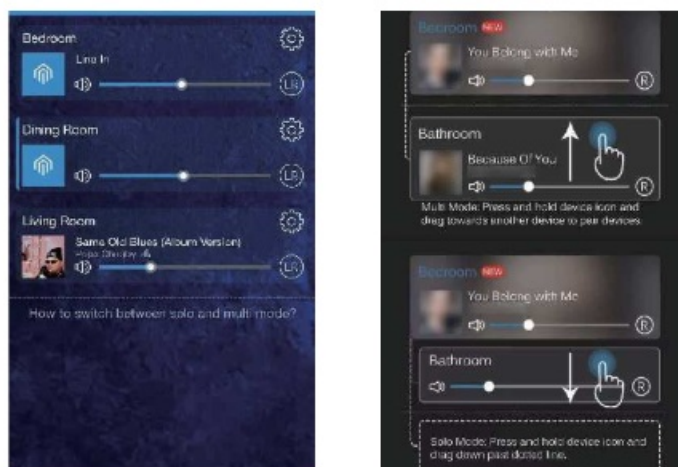


10. Select “Add More Services” to hide or show the list of music services. If you intend to use the physically connected inputs as source, hide the unused music services. Most of these services can be entirely controlled by the Omnia Receiver app. For Spotify, you will need to have their app installed, and first use their app to play to the Omnia Receiver. You can then control the playlist from the Omnia Receiver app
11. Select input source if you are not using streaming services.



## CONTROLLING MULTIPLE STREAM-9 AND RE -STREAMING

1. Each STREAM-9 is independently controlled by the Omnia Receiver app and can be accessed from the Device List. You can assign different names to each receiver, choose what songs each of them is playing, or even group them to play the same music. To group devices, press and hold a device icon and drag towards another device or existing group .

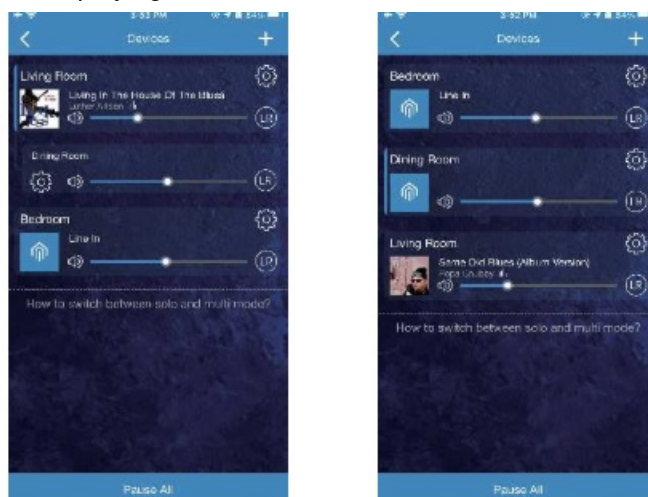


Note: NuPrime Omnia App will temporarily lose connection to the STREAM-9 as the unit reboots during the upgrade process. Please quit the App and reopen once the upgrade has been completed.

### GROUP'S DEVICE MASTER AND RE-STREAMING

When multiple devices are grouped, the first device in the group act as the master for music source. Re-streaming happens when the master device receives music from Bluetooth, coaxial or optical input and streams to all other receivers within the group.

2. Select a group or single device for playing music



## INTRODUCTION

The NuPrime STREAM-9 is a Reference Class Multi-Room Streaming Station designed for audiophiles who required high-resolution digital sources from local music libraries as well as network streaming music. It includes multiple digital outputs for connecting to external DAC.

**A summary of the following features put STREAM-9 ahead of its peers:**

- Wi-Fi 24-bit/192kHz and Bluetooth 5.0 aptX HD streaming .
- A selectable sampling rate converter {SRC} samples the streaming source or digital input music to a higher



sampling rate (up to PCM 24 -bit/768kHz and DSD256) with ultra-low jitter and distortion.

- Support all major online streaming services, Bluetooth 5.0 (aptX HD), network DLNA and AirPlay 2 streaming.
- Re-streaming of connected optical and coaxial inputs.

The free Nu Prime Omnia Receiver app (available for iOS and Android ) is very easy to use and allows you to control your smart music system , select your source music and group destination speakers (including receiving streamers).

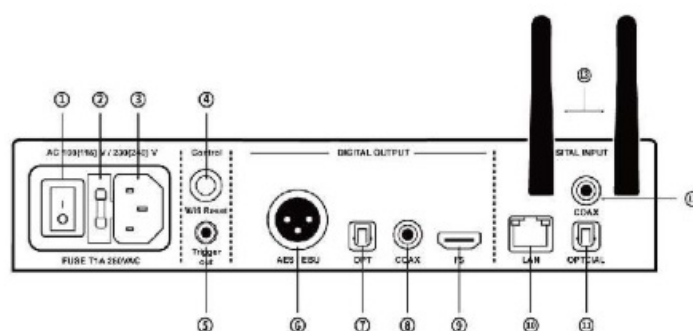
## SPECIFICATIONS

### Digital I/O & Wireless

- Bit Depths: 16-32 bit
- Streaming Audio Processing Engine : up to 192KHz / 24-bit
- Optical S/PDIF Input: PCM up to 192KHz and supporting DoP format DSD64
- Coaxial S/PDIF Input: PCM up to 192KHz and supporting DoP format DSD64
- IIS/DSD HDMI output: PCM up to 768KHz/32Bit and DSD up to DSD256
- AES/ EBU OUTPUT: PCM up to 768KHz/32Bit and DSD up to DoP256
- Optical output: PCM up to 192KHz and supporting DoP format DSD64
- Coaxial output: PCM up to 192KHz and supporting DoP format DSD64
- Quickly guide WIFI connection settings via BLE
- Streaming Technologies: Bluetooth 5.0 (aptX HD), DLNA, AirPlay, AirPlay 2
- Network Connectivity: Gigabit Ethernet RJ45, 802.11 b/g/n Wi -Fi
- Streaming Services: Deezer,iHeartRadio,Qobuz, QQ Music,Spotify, TIDAL,TuneIn

## IDENTIFICATION OF CONTROLS

### Rear Panel Illustration



#### 1. POWER SWITCH

#### 2. FUSE

#### 3. POWER SOCKET

- Connect to AC input.

#### 4. FACTORY RESET/ Wi -Fi RESET BUTTON

- Push and hold the button for 5 seconds to restore to factory settings.
- If Wi-Fi is disconnected from STREAM -9, push once for STREAM-9 to search the Wi-Fi signal again.



## 5. TRIGGER OUT

- The +12V TRIGGER OUT is used for controlling external equipment equipped with a +12V trigger input.  
Use a mono cable with a 3.5mm male plug.

## 6. . AES/ EBU OUTPUT

## 7. SPDIF OPTICAL OUTPUT

- Connect to the corresponding optical digital input of sources such as DAC and receivers.

## 8. COAXIAL SPDIF OUTPUT

- Connect to the corresponding coaxial digital input of sources such as DAC and receivers.

## 9. HDMI 125 OUTPUT

## 10. LAN

- RJ45 ethernet connection for wired network.

## 11. OPTICAL INPUT &

## 12. COAXIAL INPUT

- Connect to corresponding optical digital output of devices such as CD player, TV set-topbox, and digital music player.
- Support sampling rate to PCM 192KHz including DoP format DSD64.

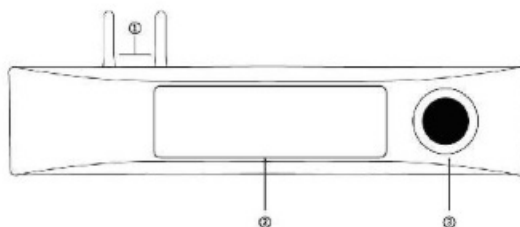
## 13. ANTENNA (Wi-Fi & Bluetooth)

- Used for Wi-Fi & Bluetooth connections.
- Qualcomm Bluetooth 5.0 (aptX HD)

### ATTENTION!

Please ensure that the STREAM-9 is powered off or unplugged from the mains power outlet before making any connections.

### Front Panel Illustration



#### 1. Dual-band antenna

#### 2. Display

#### 3. Function Control knob

- Press to select input
- Turn to select sampling rate

### REMOTE CONTROL

#### 1. Power ON/Standby button. To power off STREAM-9, use the AC switch.

#### 2. Preset channels for favorite music services.

#### 3. Source input selection

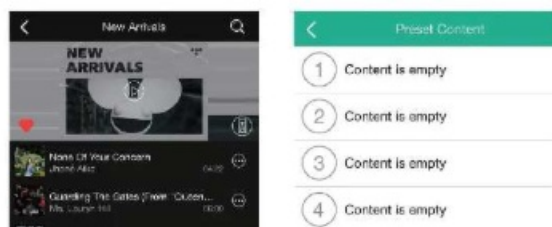
#### 4. . Sampling Rate Conversion

#### 5. Multi-function control for music playback

6. . Adjust the brightness of the OLED display screen



### Setting the Remote Control Preset Keys 1 to 9



If any of these Presets have been programmed, they will show the name of a playlist.

### Setting the Preset Channels

1. . On the App, select any playlist that you want to set on the Remote Control keys 1 to 9.
2. Only the playlist that has a speaker icon on the top right corner can be programmed as a Preset. Select the speaker icon and a Present Content box will pop up.
3. Select any of the 1 to 9 and confirm that you want to link this playlist to the corresponding Remote Control Preset Key

### TECHNICAL HIGHLIGHTS

Nu Prime proprietary Sampling Rate Converter (SRC) chip, low noise linear power supply and power circuit, plus other audiophile-grade components enable the STREAM-9 to achieve world class performance above its peers.

### Amlogic A113X

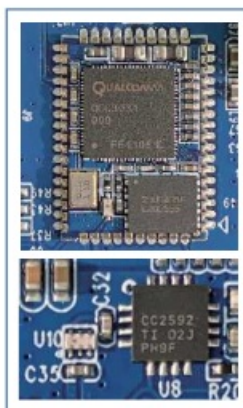
64-bit quad-core Arm Cortex-A53 processor for high resolution wireless streaming

Low noise linear power supply



### Ultra Hi-Res Sampling Rate Converter

- The sampling rate of any digital inputs, including streaming , can be converted up or down between PCM and DSD, from 44. 1kHz to 768kHz or DSD64 to DSD256 .
- The conversion is achieved by up-sampling to megahertz before down converting to the targeted sampling rate with ultra-low jitter and distortion.
- Nu prime customize the exclusive SRC chipsets with the Taiwan IC design house.
- Our team use two of them in the STREAM-9 circuit to make the special sound tuned.
- Bluetooth Wireless HD -Qualcomm aptX HD supports 24 -bit music quality over Bluetooth.
- A Bluetooth signal extender enhances signal over 30 meters.



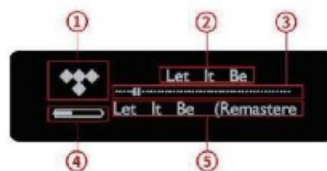
### DISPLAY SCREEN

- General mode



1. IR receiver.
2. input selected indicator.
3. Music service source, sample rate, or status indicator when used different input.
4. Volume setting from 0dB to -99dB level.
5. Amber LED lights up when STREAM-9 is in standby mode.

- Streaming Music mode



1. Music streaming name.
2. Track name indicator.
3. Playback progress indicator.
4. Volume setting level.
5. Track information

## STANDBY DISPLAY MENU

### Power on

NuPrime logo



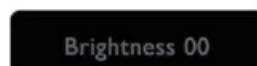
### Standby

Amber LED lights up when Function Control knob is pressed for 5 seconds



### Display Brightness

Press the Remote Control "DISPLAY" button to adjust the backlight level from 00 to 10



## Source Selection

STREAM-9 supports Wi-Fi, Bluetooth, Optical, and Coaxial inputs.

- Press the Function Control knob to toggle between the inputs.
- Use the Remote Control to select any input directly.



## SRC ( Sample Rate Converter) options:

STREAM-9 supports two ways to convert the sampling rate from input to output.

1. Press the SRC button on the Remote Control and then the arrows next to the SRC button.
2. Use the knob on the front panel to change the sampling rate.

Note that the SRC setting is saved to memory when Stream-9 is turned off so any accidental change of the sampling rate is memorized.

## Dimension and Weight

- Product Dimensions (W x H x D): 235 x 55 x 281 mm (includes feet and extended rear panel terminals)
- Product Weight: 4 kg ( 8.82 lbs.)
- Package Dimensions (W x H x D) : 390 x 80 x 360 mm
- Shipping Weight: 5 kg (11 lbs.)

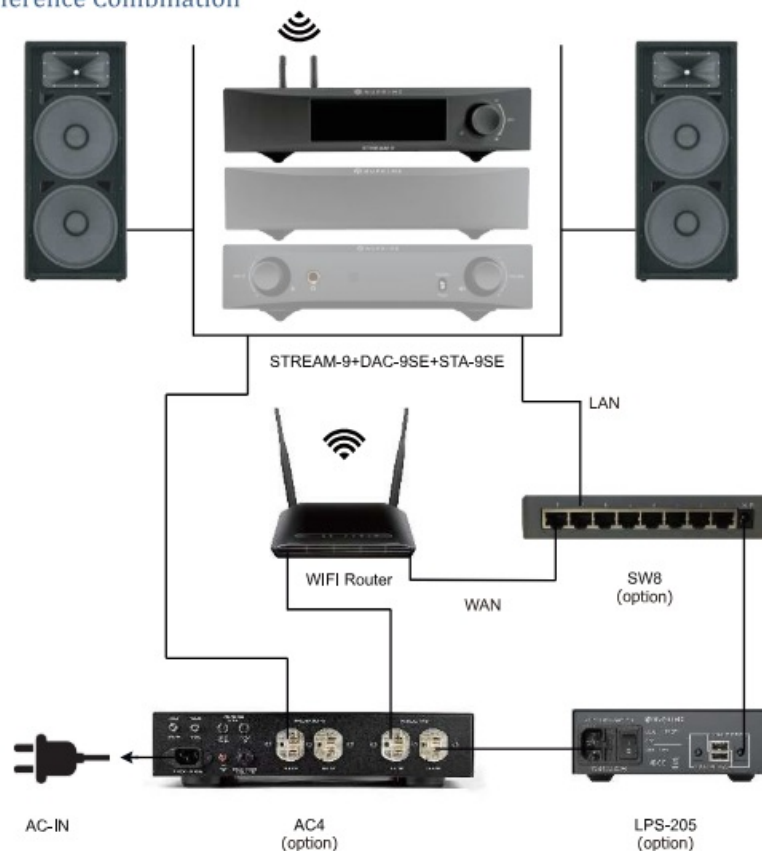
All artist and product names, logos and brands are property of their respective owners. Names, images or likenesses are copyrights of their respective owners.

Specifications and supported cloud services are subject to change without notice. Please refer to [www.nuprimeaudio.com](http://www.nuprimeaudio.com) for latest information.

## Official Reference Combination



Official Reference Combination



## NUPRIME'S LIMITED WARRANTY AND LIMITATION OF LIABILITIES

### ADDITIONAL RIGHTS

For consumers, who are covered by consumer protection laws or regulations in their country of purchase or, if different, their country of residence, the benefits conferred by this warranty are in addition to all rights and remedies conveyed by such consumer protection laws and regulations. This warranty does not exclude, limit or suspend any rights of consumers arising out of nonconformity with a sales contract. Some countries, states and provinces do not allow the exclusion or limitation of incidental or consequential damages or allow limitations on how long an implied warranty or condition may last, so the limitations or exclusions described below may not apply to you. This warranty gives you specific legal rights, and you may also have other rights that vary by country, state or province. This limited warranty is governed by and construed under the laws of the country in which the product purchase took place.

## LIMITED WARRANTY

For a period of ONE (1) YEAR from the date of retail purchase by the original end-user purchaser ("Warranty Period"), NuPrime warrants (in) this product against defects in materials and workmanship, and (ii) that each Product, unmodified and under normal use and conditions, will substantially comply with NuPrime's applicable written technical documentation for the Product. NuPrime reserves the right to make substitutions and modifications from time to time in the specifications of Products sold by NuPrime, provided that such substitutions or modifications do not materially affect overall Product performance.

If a hardware defect exists and a valid claim is received within the Warranty Period, at its option and to the extent permitted by law, NuPrime will (1) repair the hardware defect at no charge, using new or refurbished replacement parts, (2) exchange the product with a product that is new or which has been manufactured from new or serviceable used parts and is at least functionally equivalent to the original product, or (3) refund the purchase price of the product. NuPrime may request that you replace defective parts with user-installable new or refurbished parts that

NuPrime provides in fulfillment of its warranty obligation. A replacement product/part assumes the remaining warranty of the original product or ninety (90) days from the date of replacement or repair, whichever provides longer coverage for you. When a product or part is exchanged, any replacement item becomes your property and the replaced item becomes NuPrime's property. When a refund is given, your product becomes NuPrime's property.

## **OBTAINING WARRANTY SERVICE**

If you purchased the product in the U.S., deliver the product, at your expense, to any NuPrime Service Center located in the U.S. If you purchased the product outside of the U.S., deliver the product to any NuPrime Authorized Importer in the country where you purchased the product. Be aware, however, that not all countries have NuPrime Authorized Service Providers ("NASP") and not all Authorized Service Providers outside the country of purchase have all parts or replacement units for the product. If the product cannot be repaired or replaced in the country it is in, it may need to be sent to a different country or returned to the country of purchase at your expense for repair or replacement. If you seek service in a country that is not the country of original purchase, you will comply with all applicable import and export laws and regulations and be responsible for all custom duties, V.A.T. and other associated taxes and charges. Where international service is available, NuPrime may repair or exchange defective products and parts with comparable products and parts that comply with local standards. You can always deliver the product to NuPrime's U.S.A or Taiwan service center for obtaining warranty service, however, you may have to pay for shipping cost.

NuPrime may send you user-installable new or refurbished replacement product or parts to enable you to service or exchange your own product ("DIV Service"). Upon receipt of the replacement product or part, the original product or part becomes the property of NuPrime and you agree to follow instructions, including, if required, arranging the return of original product or part to NuPrime in a timely manner.

When providing DIV Service requiring the return of the original product or part, NuPrime may require a credit card authorization as security for the retail price of the replacement product or part and applicable shipping costs. If you follow instructions, NuPrime will cancel the credit card authorization, so you will not be charged for the product or part and shipping costs. If you fail to return the replaced product or part as instructed or the replaced product or part is not eligible for warranty service, NuPrime will charge the credit card for the authorized amount.

## **EXCLUSIONS AND LIMITATIONS**

This Limited Warranty applies only to hardware products manufactured by or for NuPrime that can be identified by the "NuPrime" trademark, trade name, or logo affixed to them. The Limited Warranty does not apply to any non-NuPrime hardware products or any accessories, even if packaged or sold with NuPrime hardware. Non-NuPrime manufacturers, suppliers, may provide their own warranties. Other accessories distributed by NuPrime under the NuPrime brand name are not covered under this Limited Warranty. This warranty does not apply: (a) to damage caused by accident, abuse, misuse, misapplication, liquid contact, fire, earthquake, non-NuPrime products, or other external causes; (b) to damage caused by service performed by anyone who is not a NASP; (c) to a product or a part that has been modified without the written permission of NuPrime; (d) to consumable parts, such as batteries, or protective coatings designed to diminish over time unless failure has occurred due to a defect in materials or workmanship; (e) to cosmetic damage, including but not limited to scratches, dents, and broken plastic on ports; (f) to defects caused by normal wear and tear or otherwise due to the normal aging of the product; or (g) if any NuPrime serial number has been removed or defaced.




Important: Do not open the hardware product. Opening the hardware product may cause damage that is not covered by this warranty. Only NuPrime or a NASP should perform service on this hardware product.

- This warranty and remedies set forth above are exclusive and in lieu of all other warranties, remedies and conditions, whether oral or written, express or implied. Nu Prime specifically disclaims any and all implied warranties, including, without limitation, warranties of merchantability and fitness for a particular purpose. If NuPrime cannot lawfully disclaim implied warranties under this limited warranty, all such warranties, including warranties of merchantability and fitness for a particular purpose are limited in duration to the duration of this warranty. No NuPrime reseller, agent, or employee is authorized to make any modification, extension, or addition to this warranty.
- NuPrime is not responsible for direct, special, incidental or consequential damages resulting from any breach of warranty or condition, or under any other legal theory, including but not limited to lost profits, downtime, goodwill, damage to or replacement of equipment and property, any costs of recovering, reprogramming, or reproducing any program or data stored in or used with Nu Prime products, and any failure to maintain the confidentiality of data stored on the product. Nu Prime specifically does not represent that it will be able to repair any product under this warranty or make a product exchange without risk to or loss of programs or data.
- Some states and provinces do not allow the exclusion or limitation of incidental or consequential damages or exclusions or limitations on the duration of implied warranties or conditions, so the above limitations or exclusions may not apply to you. This warranty gives you specific legal rights, and you may also have other rights that vary by state or province.
- Proof of purchase in the form of a bill of sale or receipted invoice which is evidence that the unit is within the Warranty period must be presented to obtain warranty service.

Replacement as provided under this warranty is the exclusive remedy of the consumer. NuPrime shall not be liable for any incidental or consequential damages for breach of any express or implied warranty on this product. Except to the extent prohibited by applicable law, any implied warranty of merchantability or fitness for a particular purpose on this product is limited in duration to the duration of this warranty.

Documents / Resources

	<a href="#">NUPRiME Audio Stream 9 Reference Class Network Streamer</a> [pdf] User Manual Audio Stream 9 Reference Class Network Streamer, Reference Class Network Streamer, Class Network Streamer, Network Streamer, Streamer
---	--

References

- [User Manual](#)

[Manuals+](#), [Privacy Policy](#)

This website is an independent publication and is neither affiliated with nor endorsed by any of the trademark owners. The "Bluetooth®" word mark and logos are registered trademarks owned by Bluetooth SIG, Inc. The "Wi-Fi®" word mark and logos are registered trademarks owned by the Wi-Fi Alliance. Any use of these marks on this website does not imply any affiliation with or endorsement.