

## Nuna Base Curv Rotating Slide Isofix Installation Guide



**IMPORTANT! THIS SHORT INSTRUCTION IS FOR OVERVIEW ONLY.  
FOR MAXIMUM PROTECTION AND COMPLETE INFORMATION IT IS ESSENTIAL  
TO *READ AND FOLLOW THE INSTRUCTION MANUAL OF THE CHILD RESTRAINT  
CAREFULLY.***

## **Contents** [ [hide](#) ]

- [1 Product Information](#)
- [2 Warranty](#)
- [3 Contact](#)
- [4 Child Usage Requirements](#)
- [5 Parts List](#)
- [6 Product Set Up](#)
- [7 Product Use](#)
- [8 Documents / Resources](#)
  - [8.1 References](#)

## **Product Information**

**Model Number:**.....

**Manufactured Date:**.....

## **Warranty**

We have purposely designed our high-quality products so that they can grow with both your child and your family. Because we stand by our product, our gear is covered by a custom warranty per product, starting from the day it was purchased. Please have the proof of purchase, model number and manufactured date available when you contact us.

**For warranty information please visit:**

[www.nunababy.com](http://www.nunababy.com)

Click the “Warranty” link on the homepage.

## **Contact**

For replacement parts, service, or additional warranty questions, please contact our customer service department.

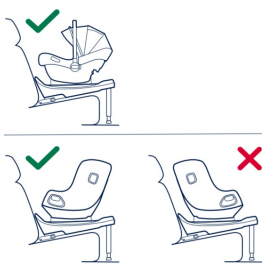

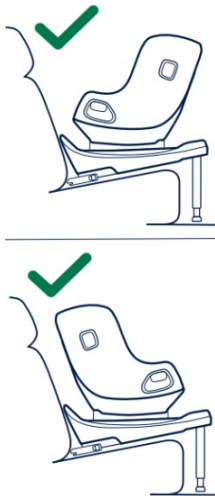

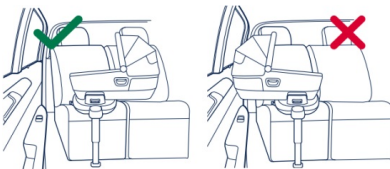
[info@nunababy.com](mailto:info@nunababy.com)

[www.nunababy.com](http://www.nunababy.com)

NUNA International B.V.  
 Van der Valk Boumanweg 178 C  
 2352JD Leiderdorp  
 The Netherlands

## Child Usage Requirements

This product is suitable for use with child restraint and children that meet the following requirements:

Child's Age	Installation Mode	Installation	Swivel Lock
<15M	Rearward Facing Mode		
>15M	Rear/ Forward Facing Mode		
<12M	Lateral Facing Mode		/

### WARNING

Failure to follow these warnings and instructions could result in serious injury or death.

For proper protection of your child, it is important to use and install BASE curv according

to the instructions given in this manual.

BASE curv is compatible with PIPA next / PIPA lite / ARRA flex / TODL next / TODL lite/ CARI next.

The available models may be different depending on the region.

Please refer to the child restraint instruction manual for more information.

This short instruction is for overview only. For maximum protection and complete information it is essential to read and follow the instruction manual of the following carefully:

Please refer to PIPA next instruction manual for the installation of PIPA next.

Please refer to PIPA lite instruction manual for the installation of PIPA lite.

Please refer to ARRA flex instruction manual for the installation of ARRA flex.

Please refer to TODL next / TODL lite instruction manual for the installation of TODL next / TODL lite.

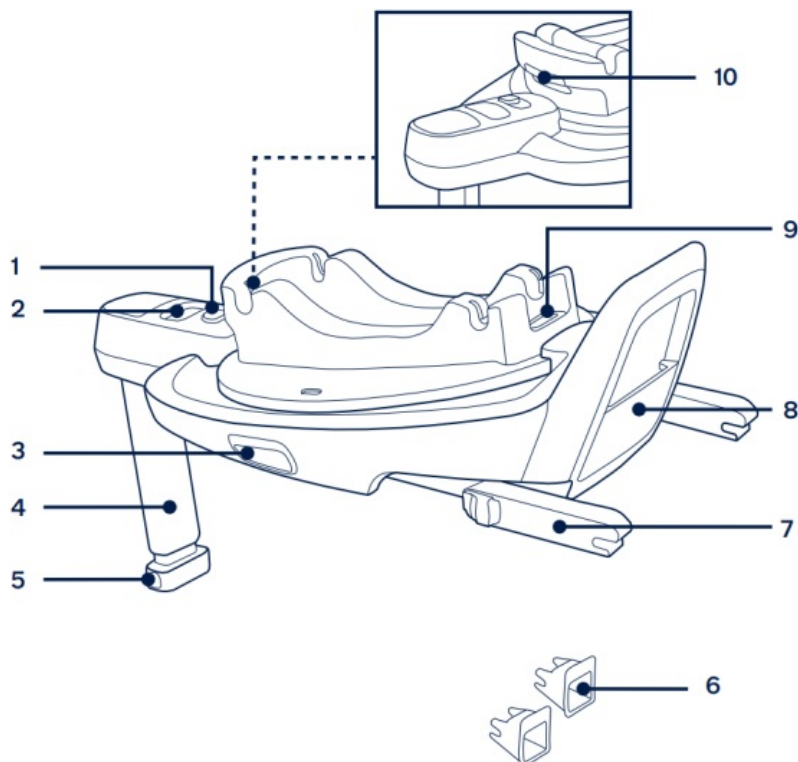
Please refer to CARI next instruction manual for the installation of CARI next.

Do not rotate the base when using with CARI next.

Be careful when rotating the base to prevent hand injuries.

## Parts List

Make sure all parts are available before assembly. If any part is missing, please contact local retailer. No tools are required for assembly.

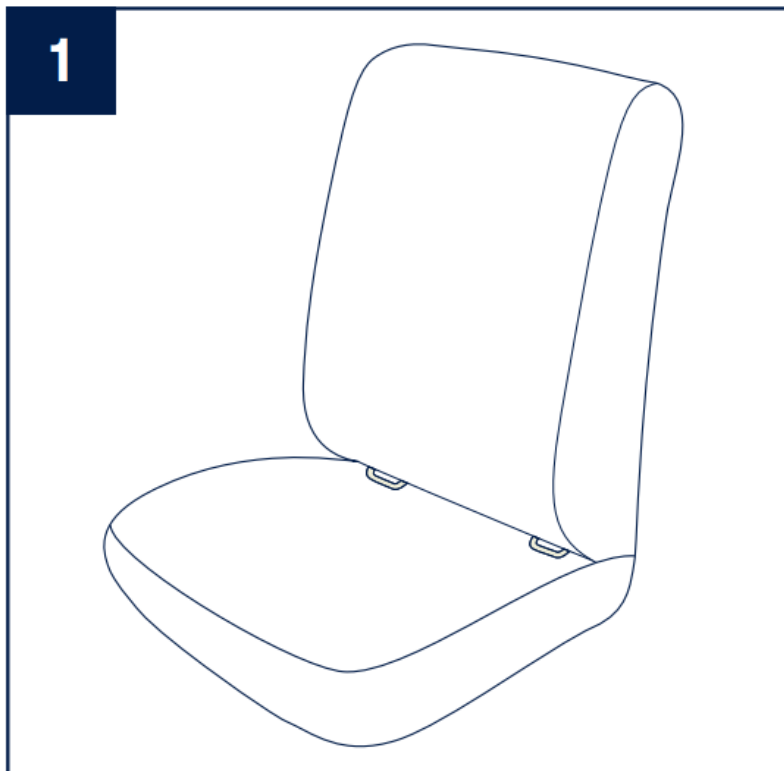


1. Swivel Lock
2. ISOFIX Adjustment Button
3. Infant Carrier Rotation Button
4. Load Leg
5. Load Leg Adjustment Button
6. ISOFIX Guides
7. ISOFIX Connector
8. Instruction Manual Storage Compartment
9. Infant Carrier Release Button
10. Release Button

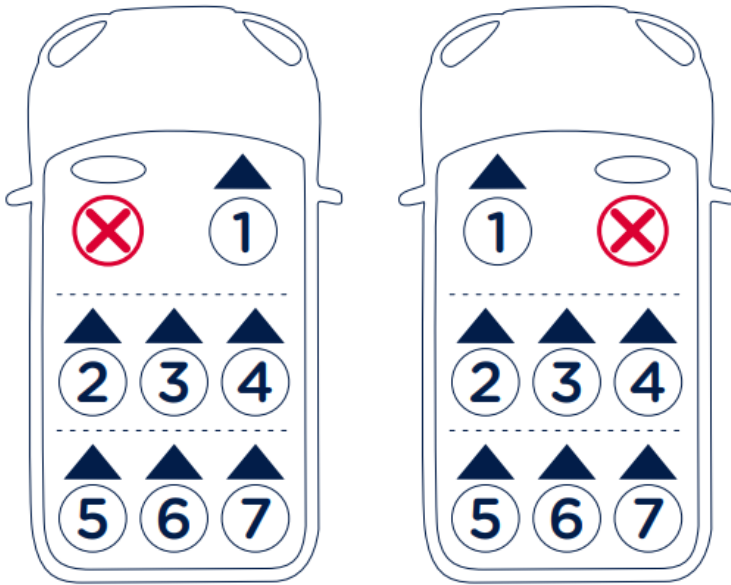
## Product Set Up

### Installation Concerns

This enhanced child restraint is only suitable for vehicle seats equipped with ISOFIX anchorage bars. **(1)**



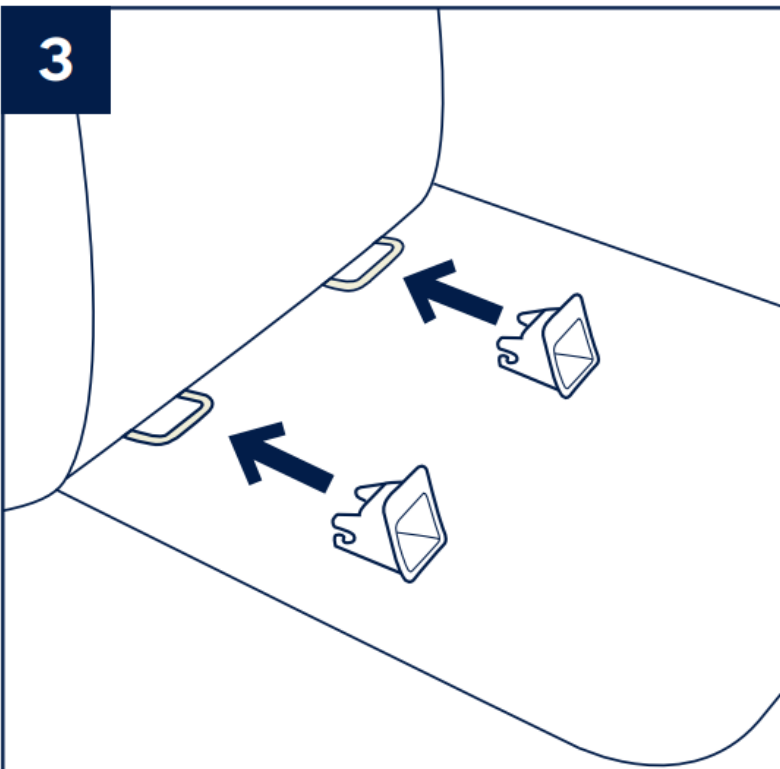
DO NOT install this enhanced child restraint on vehicle seats that face sideways or rearward with respect to the moving direction of the vehicle. **(2)**

**2**

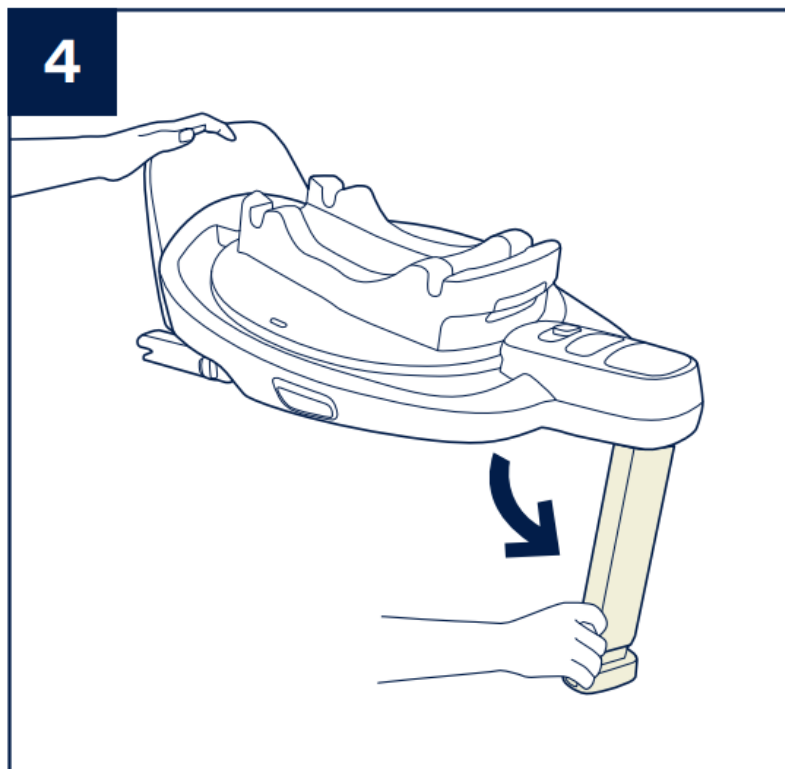
## Product Use

### Base Installation

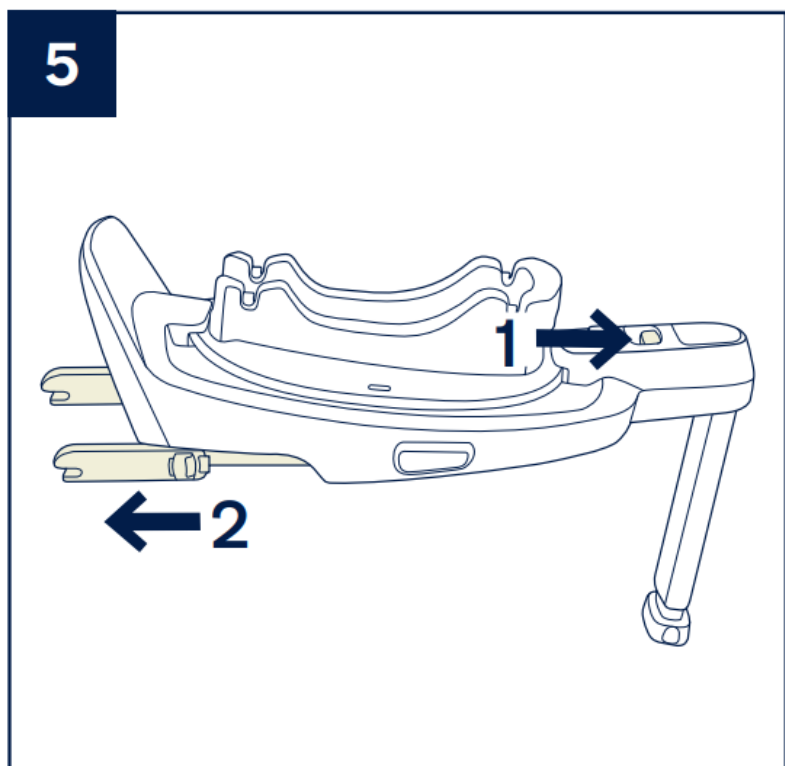
1. Attach the ISOFIX guides to the vehicle's ISOFIX anchor bars (see vehicle owner's manual). **(3)** The ISOFIX guides can protect the surface of the vehicle seat from being torn. They can also guide the ISOFIX connectors.

**3**

2. Unfold the load leg. **(4)**

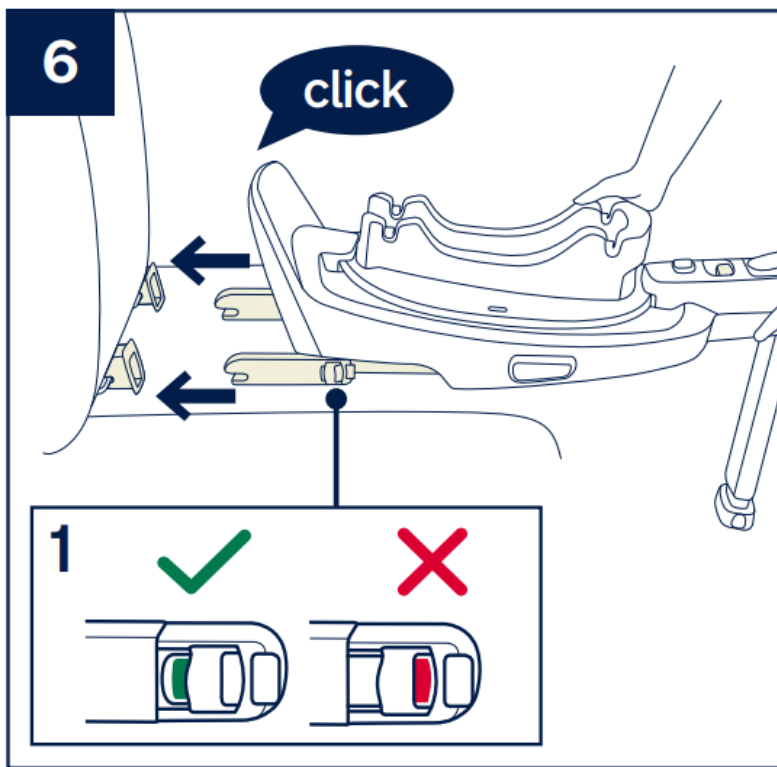


3. Extend the ISOFIX connectors by pressing the ISOFIX adjustment button while pulling on the connector. **(5)**



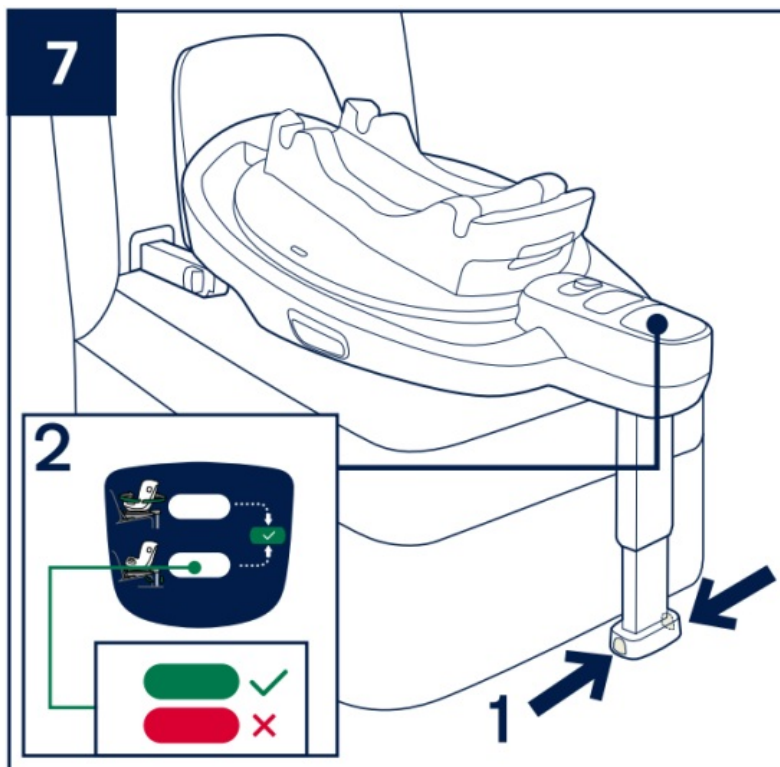
4. Press the ISOFIX adjustment button to adjust the ISOFIX connectors.

Line up the ISOFIX connectors with the ISOFIX guides, and then “click” both ISOFIX connectors into the ISOFIX anchor bars. **(6)**



- Make sure that both ISOFIX connectors are securely attached to their ISOFIX anchor bars. There should be two audible clicks and the colors of the indicators on both ISOFIX connectors should be completely green. **(6)-1**
- Check to make sure the base is securely installed by pulling on both ISOFIX connectors.

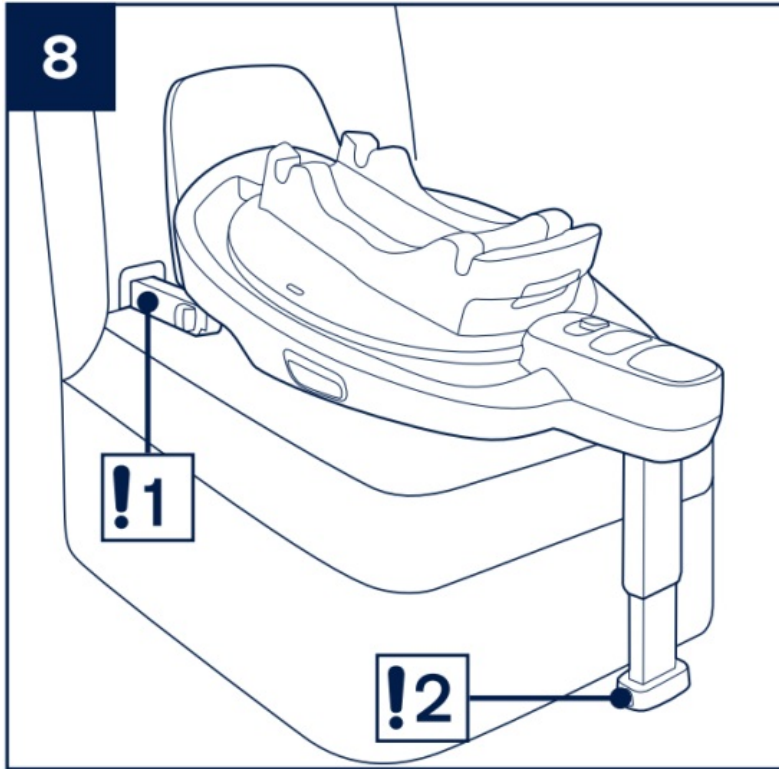
5. After placing the base on the vehicle seat, extend the load leg to the floor **(7)**.



When the load leg is installed correctly, the load leg indicator will show green. Red will be shown when installed incorrectly. **(7)-2**



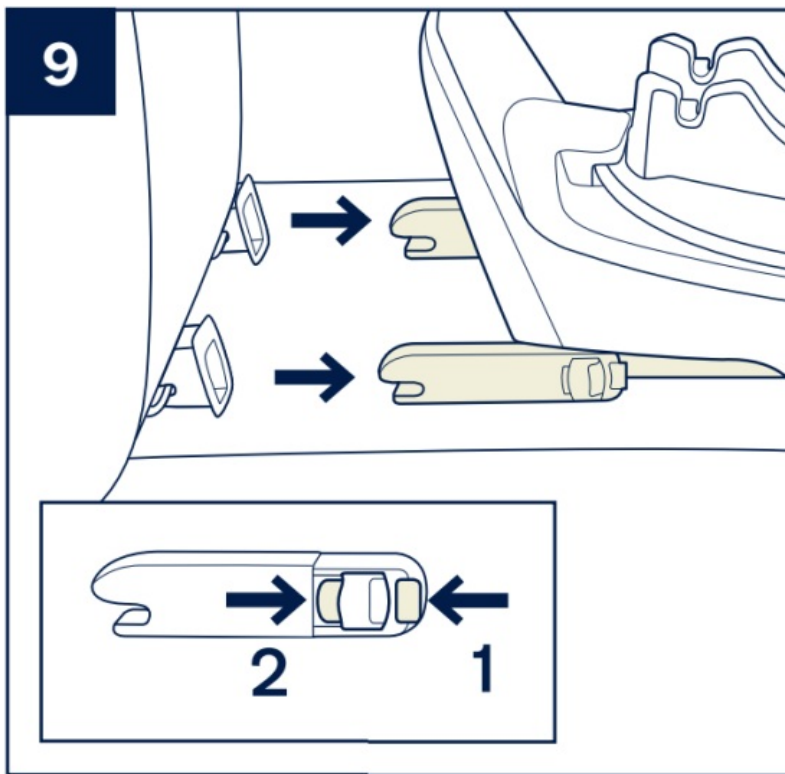
- The load leg has multiple positions. When the load leg indicator shows red this means the load leg is in the wrong position.
  - Make sure the load leg is in full contact with the vehicle floor pan.
  - Squeeze the load leg adjustment button, then shorten the load leg upwards. **(7)-1**
- The completely assembled base is shown as **(8)**.



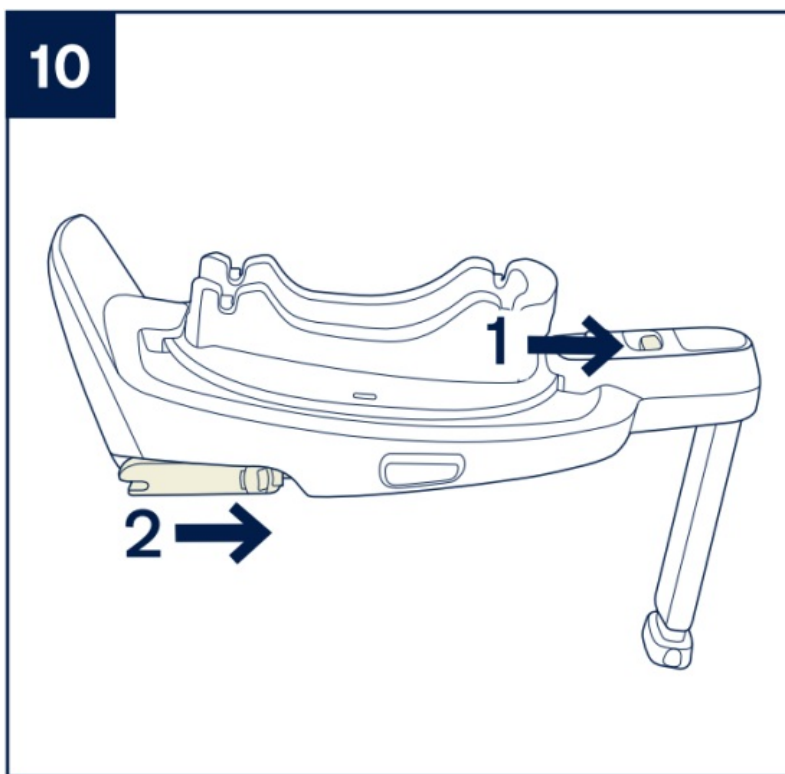
- The ISOFIX connectors must be attached and locked onto the ISOFIX anchor bars. **(8)-1**
- The load leg must be installed correctly with green indicator. **(8)-2**

## Uninstalling the Base

1. To remove the base, press the secondary lock button (9)-1 first, followed by the button (9)-2 on the ISOFIX connectors before removing the base from the vehicle seat. **(9)**

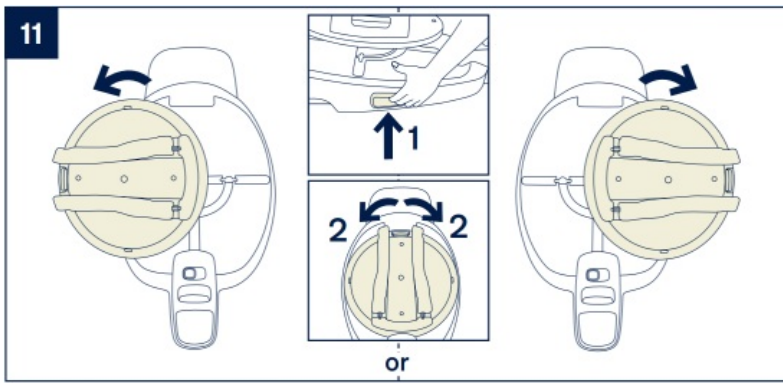


2. For transporting, press ISOFIX Adjustment button and move the ISOFIX connectors back into the storage position. **(10)**



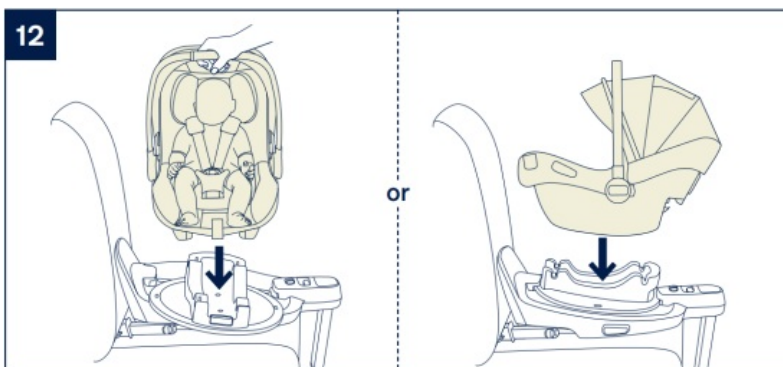
### Attaching Infant Carrier to the Base

1. Press the infant carrier rotation button on either side **(11)-1** to rotate the base **(11)-2**.

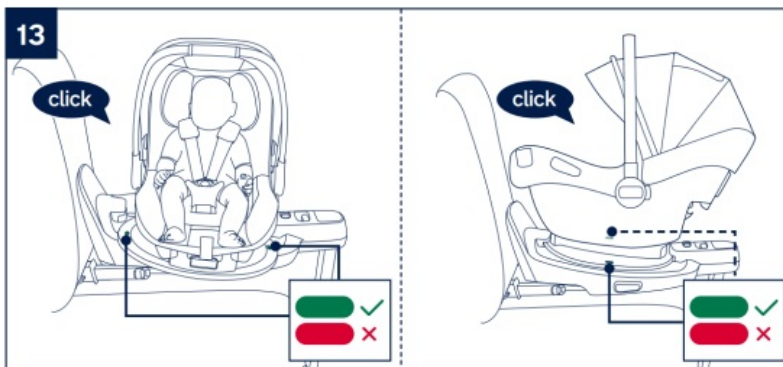


- Press and hold the infant carrier's rotation button to rotate the base toward the door side for easier loading or unloading.

2. Push the infant carrier down onto the base. The infant carrier can be installed in either the lateral facing or rearward facing position **(12)**.

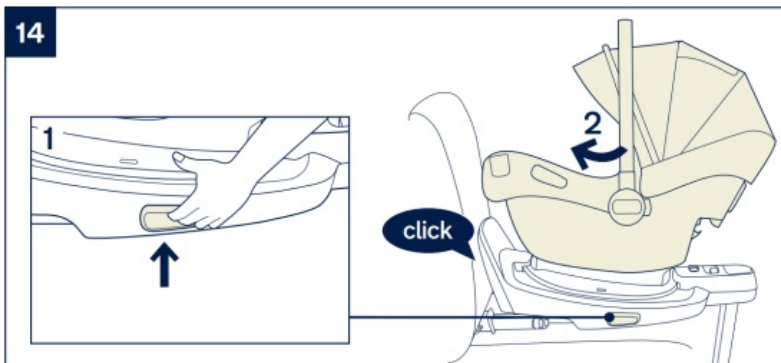


When the infant carrier is securely attached, the indicators on both sides will show green **(13)**.



- Ensure the infant carrier is securely locked onto the base by pulling up on the handle.

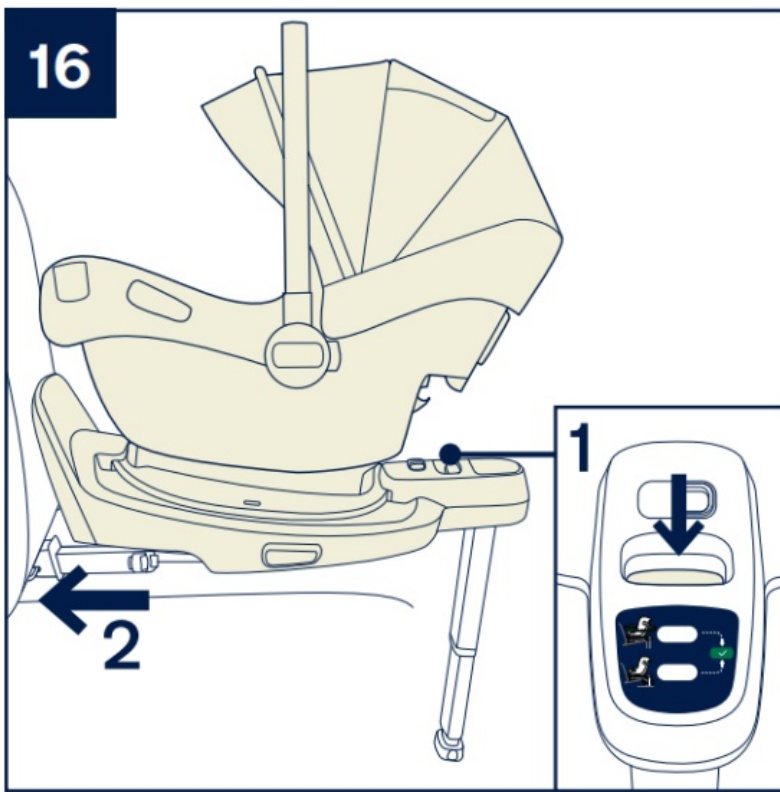
3. Press the rotation button **(14)-1** to rotate the infant carrier to rearward facing position **(14)-2**.



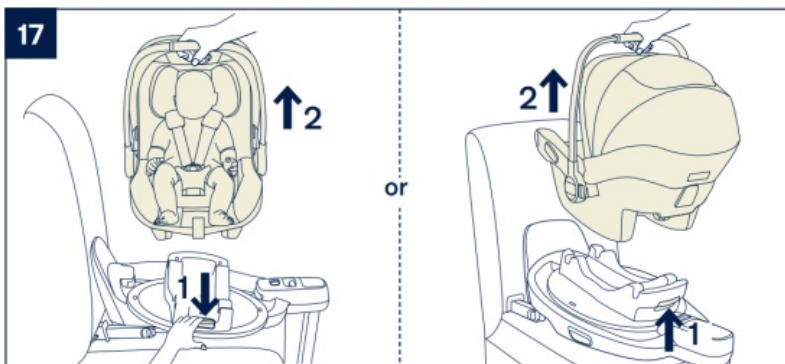
The rotation indicator will show green when it is locked into position **(15)**.



4. Press the ISOFIX adjustment button to adjust the base for a better position. **(16)**



5. The infant carrier can be released from either the lateral facing or rearward facing position. To release the infant carrier, squeeze the infant carrier release button **(17)-1**, then lift the infant carrier up. **(17)-2**

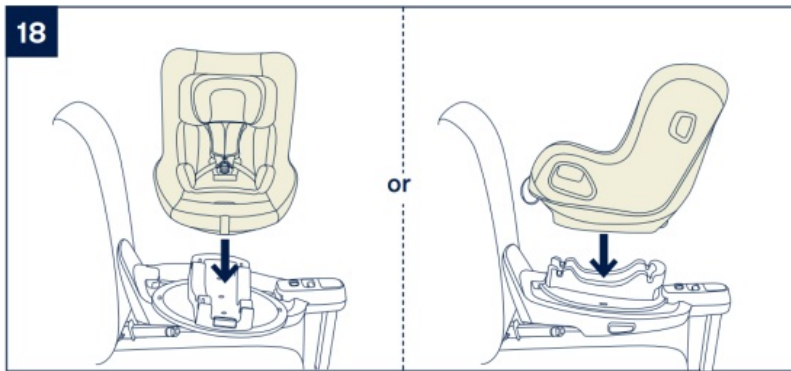


- Ensure that your vehicle has sufficient space before leaving the base in a lateral position after removing the child restraint. In some vehicles, space may be limited, and the vehicle door could make contact with the base when it is positioned laterally.

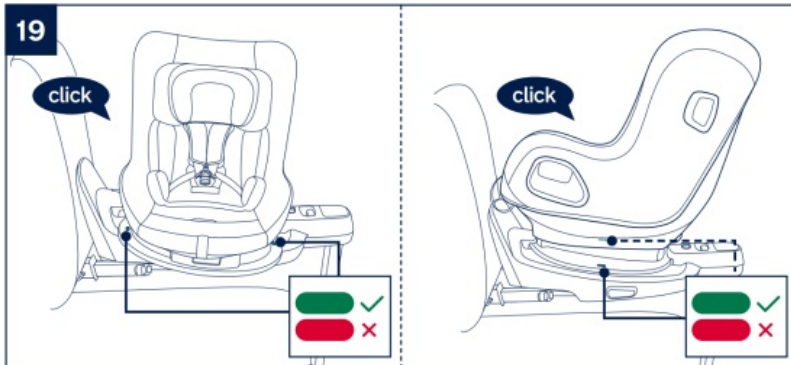
### Attaching enhanced child restraint to the Base

1. Ensure that the enhanced child restraint is installed on the vehicle seat before securing the child in it.
  - Press and hold the rotation button on child restraint to rotate the base toward the door side for easier loading or unloading of the child.
2. Push the enhanced child restraint down onto the base. The enhanced child restraint

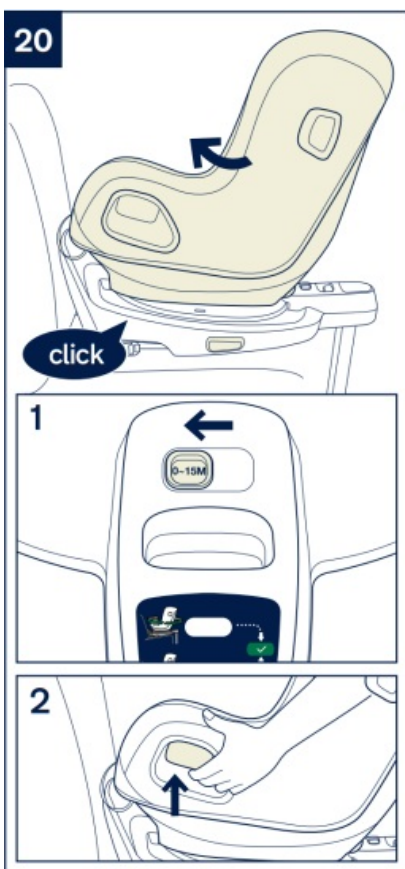
can be installed in either the lateral facing or rearward facing position **(18)**.



When securely attached, the indicators on both sides will show green **(19)**.



3. Please slide the swivel lock to the left when using the enhanced child restraint in rearward facing mode only. **(20)-1**.

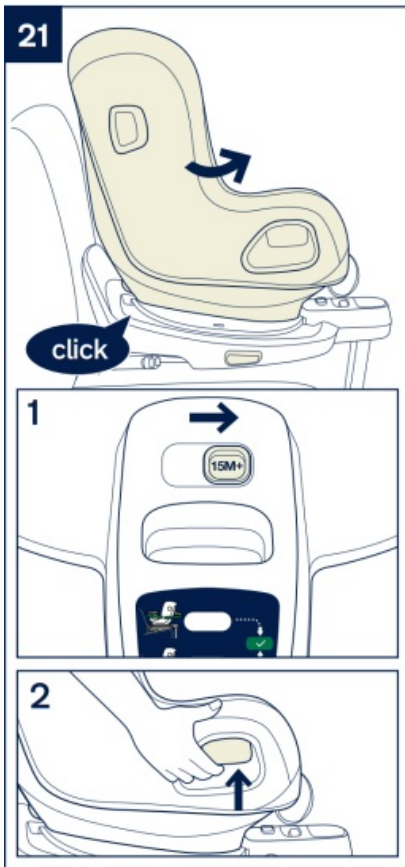


- Press and hold the child restraint's rotation button **(20)-2** to rotate the enhanced child restraint to rearward facing position (20). The rotation indicator will show

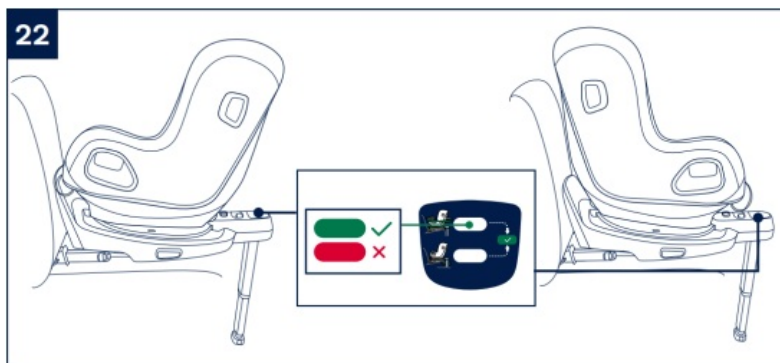


green when it is locked into position **(22)**.

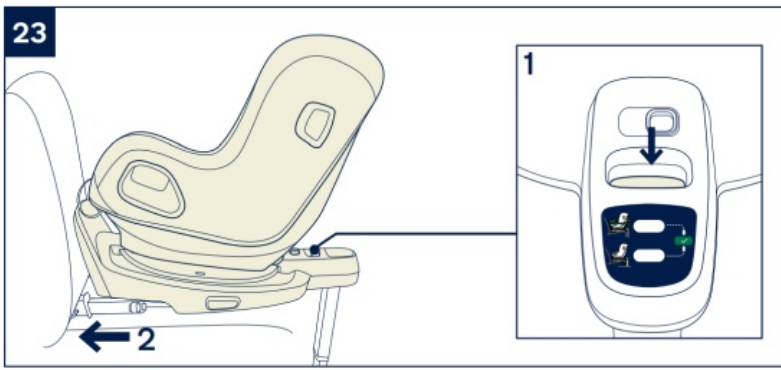
4. Please slide the swivel lock to the right when using the enhanced child restraint in forward facing and rearward facing mode. **(21)-1**.



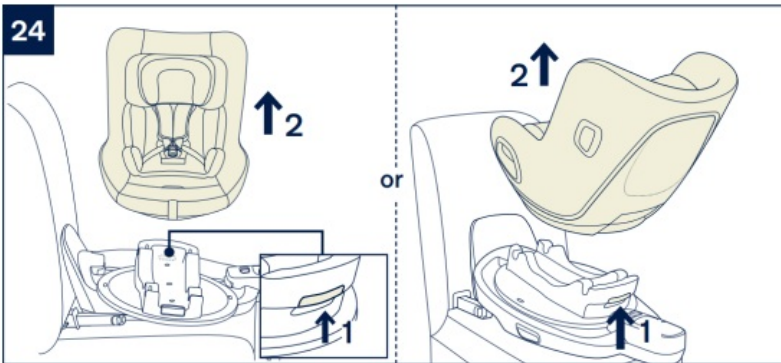
- Press and hold the child restraint's rotation button **(21)-2** to rotate the enhanced child restraint to forward facing position **(21)**. The rotation indicator will show green when it is locked into position **(22)**.



5. Press the ISOFIX adjustment button and push the base towards the vehicle backrest to a position in which the child seat can still be rotated outwards. **(23)**



6. The enhanced child restraint can be released from either the lateral facing or rearward facing position. To release the enhanced child restraint, squeeze the release button (24)-1, then lift the enhanced child restraint up. (24)-2



### Attaching Carry Cot to the Base

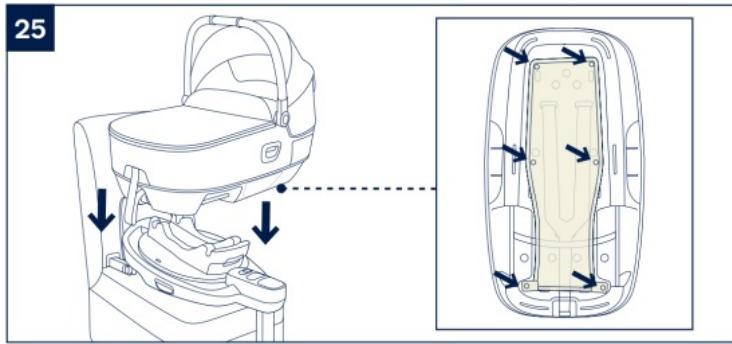
1. Push the carry cot down onto the base (25), when securely attached, the indicators on both sides will show green. (26)



- Please check that the mesh at the bottom of the carry cot is securely in place



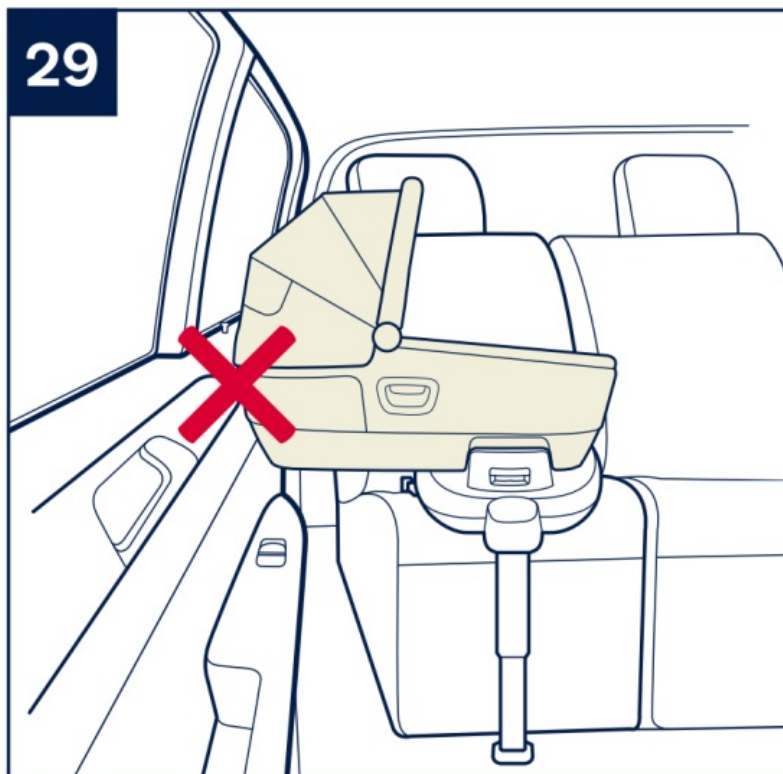
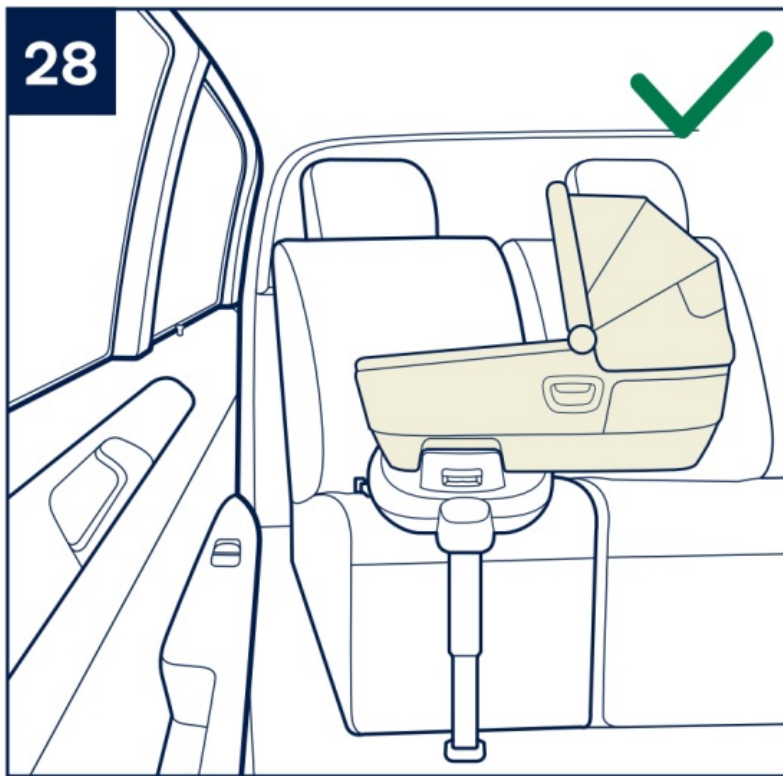
before installing the carry cot. **(25)**



- Ensure the carry cot is securely locked onto the base by pulling up on the handle.
2. Press the ISOFIX adjustment and push the base back until it comes in contact with the vehicle seat back.
  3. To release the carry cot, squeeze the release button on the base **(27)-1**, then lift the carry cot up. **(27)-2**



- Ensure that the carry cot is correctly installed on the base as shown in **(28)**.



NUNA International B.V. Nuna and all associated logos are trademarks.



**Documents / Resources**



## [Nuna Base Curv Rotating Slide Isofix \[pdf\]](#) Installation Guide

Base Curv Rotating Slide Isofix, Rotating Slide Isofix, Slide Isofix

## References

- [User Manual](#)

Base Curv Rotating Slide Isofix, nuna, Rotating Slide Isofix, Slide

nuna Isofix

## Leave a comment

Your email address will not be published. Required fields are marked \*

Comment \*

Name

Email

Website

☐ Save my name, email, and website in this browser for the next time I comment.

**Post Comment**

## Search:

e.g. whirlpool wrf535swhz

Search

[Manuals+](#) | [Upload](#) | [Deep Search](#) | [Privacy Policy](#) | [@manuals.plus](#) | [YouTube](#)

This website is an independent publication and is neither affiliated with nor endorsed by any of the trademark owners. The "Bluetooth®" word mark and logos are registered trademarks owned by Bluetooth SIG, Inc. The "Wi-Fi®" word mark and logos are registered trademarks owned by the Wi-Fi Alliance. Any use of these marks on this website does not imply any affiliation with or endorsement.