

NUMERIC Digital 600 EX V UPS



NUMERIC Digital 600 EX V UPS User Manual

[Home](#) » [NUMERIC](#) » NUMERIC Digital 600 EX V UPS User Manual 

Contents

- 1 [NUMERIC Digital 600 EX V UPS](#)
- 2 [Product Usage Instructions](#)
- 3 [FAQ](#)
- 4 [CONGRATULATIONS](#)
- 5 [INTRODUCTION](#)
- 6 [IMPORTANT SAFETY INSTRUCTIONS](#)
- 7 [SYSTEM DESCRIPTION](#)
- 8 [INSTALLATION AND OPERATION](#)
- 9 [SPECIFICATION](#)
- 10 [TROUBLESHOOTING](#)
- 11 [Contact](#)
- 12 [Documents / Resources](#)
 - 12.1 [References](#)

NUMERIC®

NUMERIC Digital 600 EX V UPS



Specifications:

- Model: Digital 600 EX V
- Application: Personal Computers
- AVR: Double boost and single buck AVR
- Voltage Range: 140 to 300VAC
- Charger: Fast charger recharge battery
- Features: Built-in DC start function, generator compatibility

Product Usage Instructions

1. Inspection:

Remove the UPS from its packaging and inspect it for any shipping damage. If damaged, return to the dealer.

2. Placement:

Install the UPS in a protected environment with adequate airflow, free from dust and contaminants. Keep away from high temperatures and humidity. Place at least 20 cm away from the monitor.

3. Charging:

Plug the UPS into a power supply to recharge the battery fully for at least 8 hours without any load connected.

4. Connection:

Plug the UPS into a grounded receptacle and connect computer devices to the power receptacles on the back panel.

5. Turn On/Off:

To turn on/off the UPS, press the power switch lightly.

6. DC Start:

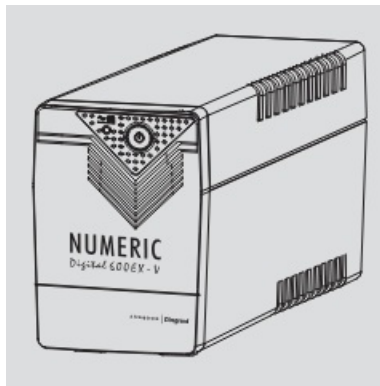
If AC utility power is not available, press the power switch to start the UPS using DC Start.

FAQ

- **Q: What should I do if I discover shipping damage on the UPS?**
 - A: If you find any damage, repack the unit and return it to the dealer from whom you purchased it.
- **Q: How long should I charge the UPS before use?**
 - A: Charge the UPS fully by leaving it plugged in for at least 8 hours without any load connected.

CONGRATULATIONS

We are delighted to welcome you to our family of customers. Thank you for choosing Numeric as your reliable power solution partner, you now have access to our widest network of 250+ service centers in the country. Since 1984, Numeric has been enabling its clients to optimize their business with top-notch power solutions that promise seamless and clean power with controlled environmental footprints. We look forward to your continued patronage in the years to come. This manual contains detailed instructions on how to use, install and operate this product.



Disclaimer

- The contents of this manual are bound to change without prior notice.
- We have exercised reasonable care to give you an error-free manual. Numeric disclaims liability for any inaccuracies or omissions that may have occurred. If you find information in this manual that is incorrect, misleading or incomplete, we would appreciate your comments and suggestions.
- Before you begin the installation of the product, please read this manual thoroughly. The warranty of this product is null and void, if the product is abused/misused.

INTRODUCTION

Digital 600 EX V is designed for personal computers. Equipping double boost and single buck AVR, Digital EX V UPS can stabilize a wide voltage range from 140 to 300VAC. The fast charger recharge battery ensures that battery is always ready for power backup. Built-in DC start function and generator compatibility makes UPS adapt to various operational conditions. The following points shows other handy features of Digital EX UPS.

- Microprocessor control guarantees high reliability
- Double boost & single buck AVR stabilize wide voltage fluctuations
- Fast charger ensures battery readiness for power backup
- DC start function
- Generator compatibility
- Auto restart while AC recovery
- Compact size, light weight

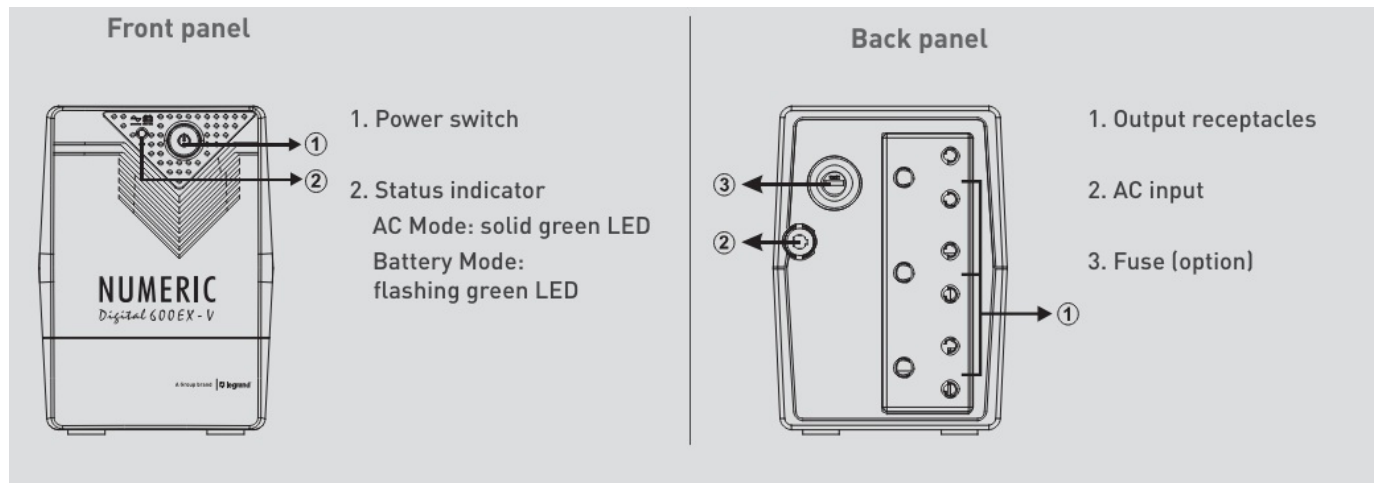
IMPORTANT SAFETY INSTRUCTIONS

Save these instructions: This manual contains important instructions for the model Digital 600 EX V that should be followed during installation and maintenance of the UPS and batteries.

- This UPS utilizes voltages that may be hazardous. Do not attempt to disassemble the unit. The unit contains no user serviceable parts. Only factory service personnel may perform repairs.
- Connection to any other type of receptacle other than a 2-pole, 3-wire grounding receptacle may result in shock hazard as well as violate local electrical codes.
- In the event of an emergency, turn the power switch to the "off" position and disconnect the power cord from the AC power supply to properly disable the UPS
- Do not allow any liquids or any foreign object to enter the UPS. Do not place beverages or any other liquid-containing vessels on or near the unit.
- This unit is intended for installation in a controlled environment (temperature controlled, indoor area free of conductive contaminants). Avoid installing the UPS in locations where there is standing or running water, or excessive humidity.
- Do not plug the UPS input into its own output.
- Do not attach a power strip or surge suppressor to the UPS.
- Do not attach non-computer related items, such as medical equipment, life-support equipment, microwave ovens, or vacuum cleaners to UPS.
- To reduce the risk of overheating the UPS, do not cover the UPS' cooling vents and avoid exposing the unit to direct sunlight or installing the unit near heat emitting appliances such as space heaters or furnaces.
- Unplug the UPS prior to cleaning and do not use liquid or spray detergent.
- Do not dispose off battery or throw batteries in a fire. The battery may explode.
- Do not open or mutilate the battery or batteries. Released electrolyte is harmful to the skin and eyes. It may be toxic.
- A battery can present a risk of electrical shock and high short circuit current. The following precautions should be observed when working on batteries:
 1. Remove watches, rings, or other metal objects from the hand.
 2. Use tools with insulated handles.

3. Wear rubber gloves and boots.
 4. Do not lay tools or metal parts on the top of batteries.
 5. Disconnect charging source prior to connecting or disconnecting batteries terminal.
- Servicing of batteries should be performed or supervised by personnel knowledgeable of batteries and the required precautions. Keep unauthorized personnel away from batteries.
 - When replacing batteries, replace with the same type and number of the sealed lead-acid batteries. The maximum ambient temperature rating is 40 0c.
 - This pluggable type-A equipment with battery already installed by the supplier is operator installable and may be operated by laymen.
 - During the installation of this equipment it should be assured that the sum of the leakage currents of the UPS and the connected loads does not exceed 3.5 mA.
 - Beware of hazards that may arise through electric shocks. Also, while disconnecting this unit from the mains, may be available through. supply from battery. The battery supply should be therefore disconnected in the plus and minus pole of the battery when maintenance or service work inside the UPS is necessary.
 - The mains socket outlet that supplies to the UPS shall be installed near the UPS and shall be easily accessible

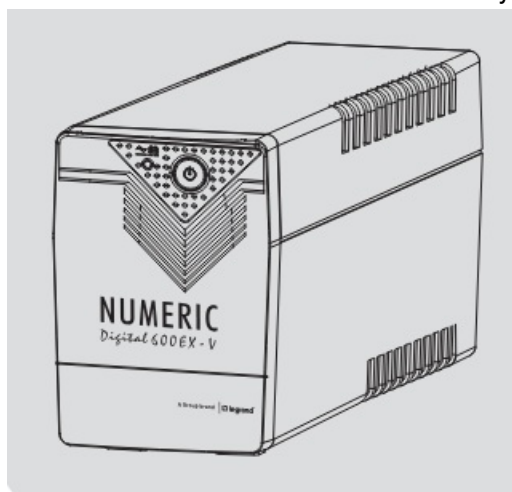
SYSTEM DESCRIPTION



INSTALLATION AND OPERATION

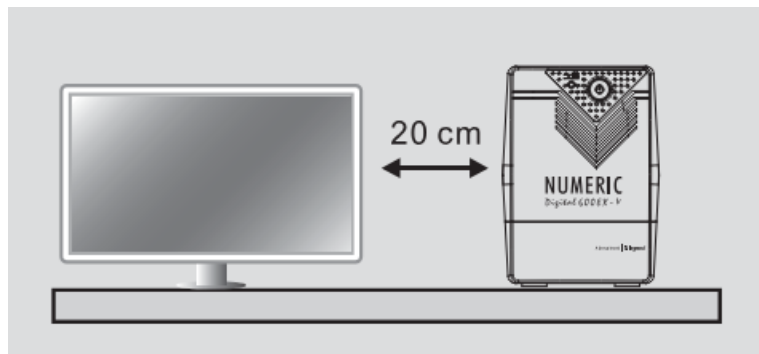
Inspection

Remove the UPS from its packaging and inspect it for damage that may have occurred during shipping. If any damage is discovered, repack the unit and return it to the dealer from whom you had purchased.



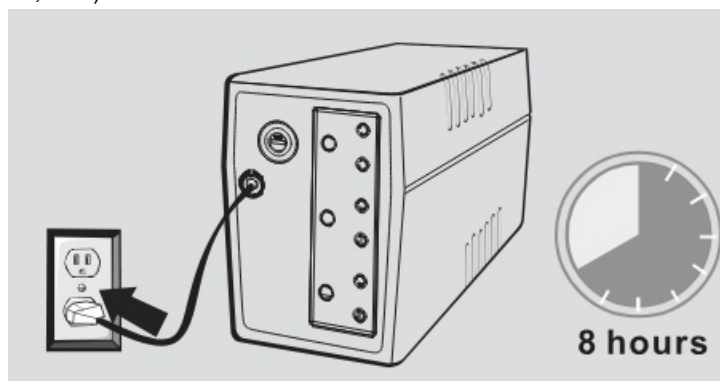
Placement

Install the UPS unit in any protected environment that provides adequate airflow around the unit, and is free from excessive dust, corrosive fumes and conductive contaminants. Do not operate your UPS in an environment where the ambient temperature or humidity is high. On the other hand, place the UPS at least 20 cms away from the monitor to avoid interference.



Charging

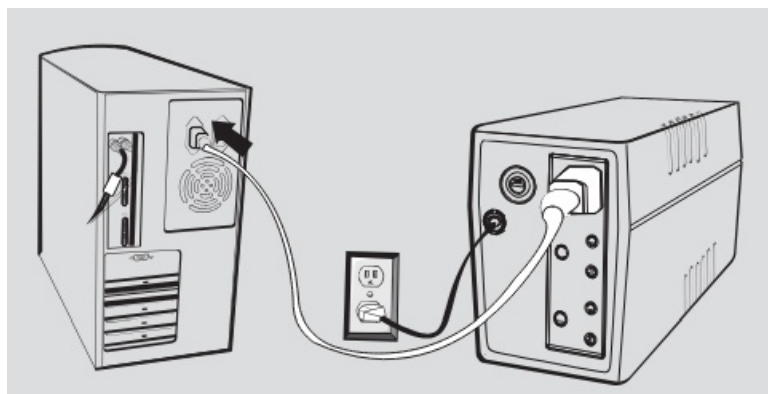
This unit is shipped from the factory with its internal battery fully charged, however, some charge may be lost during shipping and the battery should be recharged prior to use. Plug the unit into an appropriate power supply and allow the UPS to charge fully by leaving it plugged in for at least 8 hours with no load (no electrical devices such as computers, monitors, etc.) connected.



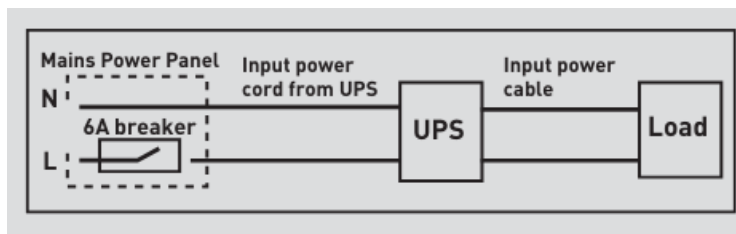
Connection

Plug the UPS into a 2-pole, 3-wire grounded receptacle. Then connect one computer related device into each of the power receptacles supplied on the back panel.

Note: Circuit breaker rating of the branch circuit supplied from the mains input panel sizing must be 6 A/250 Vac in accordance with National Electrical Codes and Standards as per schematic (based on N.E.C NFPA 70 -2014; Reference: Article 240)

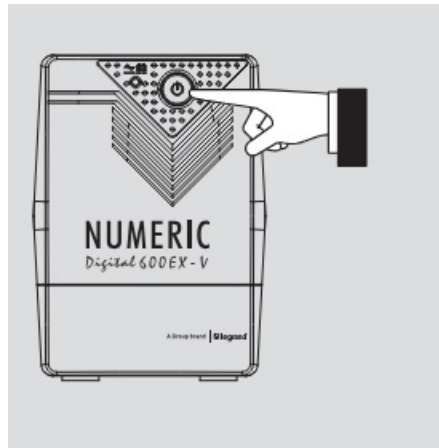


Note: Circuit Breaker rating of the Branch Circuit supplied from the mains input panel sizing must be 6 A/250 Vac in accordance with National Electrical Codes and Standards as per schematic (based on N.E.C NFPA 70 -2014; Reference: Article 240)



Turn On/Off

- To turn on the UPS unit, press the power switch lightly.
- To turn off the UPS unit, press the power switch again.



DC Start

This series is equipped with DC Start. To start the UPS when AC utility power is not available, simply press the power switch.

Green Power Function

UPS is equipped with Green Power function. If no load is connected, UPS will automatically shut down in 5 minutes for energy saving during power failure. The UPS will restart while AC recovery.

SPECIFICATION

Model	Description	Digital 600 EX V
Capacity	VA/W	600 VA/360 W
Input	Voltage range	140-300 Vac
Frequency	50 Hz	
Output	Voltage	190-253 Vac
	Voltage regulation (Batt. mode)	230 Vac +/- 10%
	Frequency regulation (Batt. mode)	50 +/-1 Hz
Waveform	Modified sine wave	
Battery	Battery type and number	12 V/7 Ah x 1 pc (sealed, lead-acid, maintenance free, 6 cells battery)
	Back up time (1 PC load)	10 min
Recharge time	4-8 hours to 90% after complete discharge	
Transfer time	Typical	4-8 ms, max 10 ms
Indicator	AC mode	Green lighting
	Back up mode	Green flashing
Audible alarm	Back up mode	Sounds every 10 seconds
	Low battery	Sounds every second
	Overload	Sounds 0.5 seconds
	Fault	Continuously sounds
Protection	Full protection	Discharge, overcharge and overload protection
Physical	Dimension (DXWXH)	279 X 101 X 143 mm
	Net weight	4.23 kg
Environment	Operating environment	0-40°C, 0-90% relative humidity (non-condensing)
	Noise level	Less than 40 dB

Product specifications are subject to change without further notice

TROUBLESHOOTING

Use the following table to solve minor problems. If any abnormal situation occurs that are not listed above, please call service technician for assistance

Problem	Possible cause	Remedy
No LED light on the front panel after pressing the power on/off switch.	1. Battery weak	Re-charge battery up to 4-6 hours
	2. Battery defect	Replace with the same type of battery
	3. Power on/off switch is not firmly pressed.	Press the power switch again
Alarm beeps continuously when utility power is normal	Overload of the UPS	Verify that the connected load is equal to or less than the UPS capability as specified
Green LED flashes, and UPS keeps running in battery mode when utility power exists.	1. Fuse blowout or breaker trips	Replace with same type of fuse or reset breaker.
	2. Utility power fluctuation exceeds UPS voltage range	Normal condition. No action is needed.
	3. Loosen power cord	Reconnect the power cord properly.
UPS provides inadequate run-time.	1. Overload of the UPS	Remove some non-critical load
	2. Battery voltage is too low	Charge battery 4-6 hours or more
	3. Battery defect due to high-temperature environment, or improper operation to the battery.	Replace with the same type of battery

Contact

Head Office

- 10th Floor, Prestige Center Court,
- Office Block, Vijaya Forum Mall, 183,
- N.S.K Salai, Vadapalani,
- Chennai – 600 026.
- Phone: +91 44 4656 5555

Regional Offices

New Delhi

- B-225, Okhla Industrial Area,
- 4th Floor, Phase-1,
- New Delhi – 110 020.
- Phone: +91 11 2699 0028
- Kolkata
- Bhakta Tower, Plot No. KB22,
- 2nd & 3rd Floor, Salt Lake City,
- Sector – III, Kolkata – 700 098.
- Phone : +91 33 4021 3535 / 3536

Mumbai

- C/203, Corporate Avenue, Atul Projects,
- Near Mirador Hotel, Chakala,
- Andheri Ghatkopar Link Road,
- Andheri (East), Mumbai – 400 099.
- Phone : +91 22 3385 6201

Chennai

- 10th Floor, Prestige Center Court,
- Office Block, Vijaya Forum Mall,
- 183, N.S.K Salai, Vadapalani,
- Chennai – 600 026.
- Phone : +91 44 3024 7236 / 200

Branch Offices

Chandigarh

- SCO 4, First Floor, Sector 16,
- Panchkula, Chandigarh – 134 109.
- Phone : +91 93160 06215

Dehradun

- Unit-1 and 2, Chakrata Road,
- Vijay Park Dehradun – 248001.
- Uttrakhand
- Phone : +91 135 661 6111

Jaipur

- Plot No. J-6, Scheme-12B,
Sharma Colony, Bais Godown,
- Jaipur – 302 019.
- Phone : +91 141 221 9082

Lucknow

- 209/B, 2nd Floor, Cyber Heights,
- Vibhuti Khand, Gomti Nagar,
- Lucknow – 226 018.
- Phone : +91 93352 01364
- Bhubaneswar

- N-2/72 Ground Floor, IRC Village,
- Nayapally, Bhubaneswar – 751 015.
- Phone: +91 674 255 0760

Guwahati

- House No 02,
- Rajgarh Girls High School Road
- (Behind Rajgarh Girls High School),
- Guwahati – 781 007.
- Phone : +91 96000 87171

Patna

- 405, Fraser Road, Hemplaza,
- 4th Floor, Patna – 800 001.
- Phone : +91 612 220 0657

Ranchi

- 202 & 203, 2nd Floor, Sunrise Forum,
- Bardwan Compound, Lalpur, 2nd Floor,
- Ranchi – 834 001.
- Phone : + 91 98300 62078

Ahmedabad

- A-101/102, Mondeal Heights,
- Beside Hotel Novotel, Near Iscon Circle,
- S G Highway, Ahmedabad – 380 015.
- Phone : +91 79 6134 0555

Bhopal

- Plot No. 2, 221, 2nd Floor, Akansha Complex,
- Zone-1, M.P.Nagar, Bhopal– 462 011.
- Phone : +91 755 276 4202

Nagpur

- Plot.No.174, H.No.4181/C/174, 1st Floor,
- Loksewa Housing Society, Near Dr. Umathe
- & Mokhare College, Bhamti Road,
- Lokseva Nagar, Nagpur – 440 022.

- Phone : +91 712 228 6991 / 228 9668

Pune

- Pinnacle 664 park avenue, 8th floor,
- Plot no 102+103, CTS No. 66/4,
- Final, 4, Law College Rd, Erandwane,
- Pune, Maharashtra – 411 004.
- Phone : +91 +20 6729 5624

Bengaluru

- No-58, First Floor, Firoze White Manor,
- Bowring Hospital Road,
- Shivajinagar, Bangalore -560 001.
- Phone : +91 80 6822 0000

Coimbatore

- No. B-15, Thirumalai Towers, No. 723,
- 1st Floor, Avinashi Road, Coimbatore – 641 018.
- Phone : +91 422 420 4018

Hyderabad

- Prestige Phoenix Building,
- 1st Floor, Survey no. 199,
- No. 6-3-1219/J/101 & 102, Uma Nagar,
- Opposite to Begumpet Metro Station
- Begumpet 500016
- Phone: +91 40 4567 1717/2341 4398/2341 4367

Kochi

- Door No. 50/1107A9, JB Manjooran Estate,
- 3rd Floor, Bypass Junction,
- Edappally, Kochi – 682 024.
- Phone : +91 484 6604 710

Madurai

- 12/2, DSP Nagar,
- Dinamalar Avenue,
- Madurai – 625 016.

- Phone : +91 452 260 4555

Contact us.:

- Email: customer.care@numericups.com
 - Phone: 0484-3103266 / 4723266
 - www.numericups.com
-

Documents / Resources



[NUMERIC Digital 600 EX V UPS](#) [pdf] User Manual
Digi600EX-V, Digital 600 EX V UPS, Digital 600 EX V, UPS

References

- [User Manual](#)

Manuals+, Privacy Policy

This website is an independent publication and is neither affiliated with nor endorsed by any of the trademark owners. The "Bluetooth®" word mark and logos are registered trademarks owned by Bluetooth SIG, Inc. The "Wi-Fi®" word mark and logos are registered trademarks owned by the Wi-Fi Alliance. Any use of these marks on this website does not imply any affiliation with or endorsement.