

nuaire BPS V-CO - Vertical Boxer Packaged Solution with Connect



nuaire BPS V-CO – Vertical Boxer Packaged Solution with Connect Control User Guide

[Home](#) » [Nuaire](#) » nuaire BPS V-CO – Vertical Boxer Packaged Solution with Connect Control User Guide 

Contents

- [1 nuaire BPS V-CO – Vertical Boxer Packaged Solution with Connect Control](#)
- [2 Specifications](#)
- [3 Symbols](#)
- [4 SAFETY INFORMATION](#)
- [5 Installation](#)
- [6 Documents / Resources](#)
 - [6.1 References](#)
- [7 Related Posts](#)



nuaire BPS V-CO – Vertical Boxer Packaged Solution with Connect Control



Specifications

- **Model:** BPS
- **Type:** Passivhaus End Panel

Symbols

- **GENERAL WARNING:** Signifies a general warning regarding a hazard specified by supplementary information.
- **ELECTRIC SHOCK:** This unit must be completely electrically isolated before any panels are removed. Check mains supply and control connections.
- **ROTATING PARTS:** This unit contains fast-moving rotational parts that may start automatically. It is the sole responsibility of the installer to adequately guard these components.
- **REFER TO INSTRUCTION MANUAL:** Read and understand the installation and maintenance manual before installing, operating or maintaining this product.

SAFETY INFORMATION

- Isolate from the power supply before removing any covers. During installation/maintenance ensure all covers are fitted before switching on the mains supply.
- Ducting must be securely fixed with screws to the spigot to prevent access to live parts. Duct runs terminating close to the fan must be adequately protected by suitable guards.
- This appliance should not be used by children or persons with reduced physical, sensory or mental capabilities or lack of experience and knowledge unless they have been given supervision or instruction concerning the safe use of the appliance by a person responsible for their safety. Children shall not play with the appliance. Cleaning and user maintenance shall not be carried out by children.
- Any ducting, silencers, or other similar ancillaries attached to the flange connector must be independently supported by others.

Symbols

GENERAL WARNING

Signifies a general warning regarding hazards specified by supplementary information.

ELECTRIC SHOCK

This unit must be completely electrically isolated before any panels are removed. Check mains supply and control connections.

ROTATING PARTS

This unit contains fast-moving rotational parts which may start automatically. It is the sole responsibility of the installer to adequately guard these components.

REFER TO INSTRUCTION MANUAL

Read and understand the installation and maintenance manual before installing, operating, or maintaining this product.

Important Information

- Read these instructions completely and thoroughly before working with the product.
- Keep these instructions in a location where they are accessible to all users at all times.

Personal Protective Equipment

The following minimum Personal Protective Equipment (PPE) is recommended when interacting with Nuaire products:

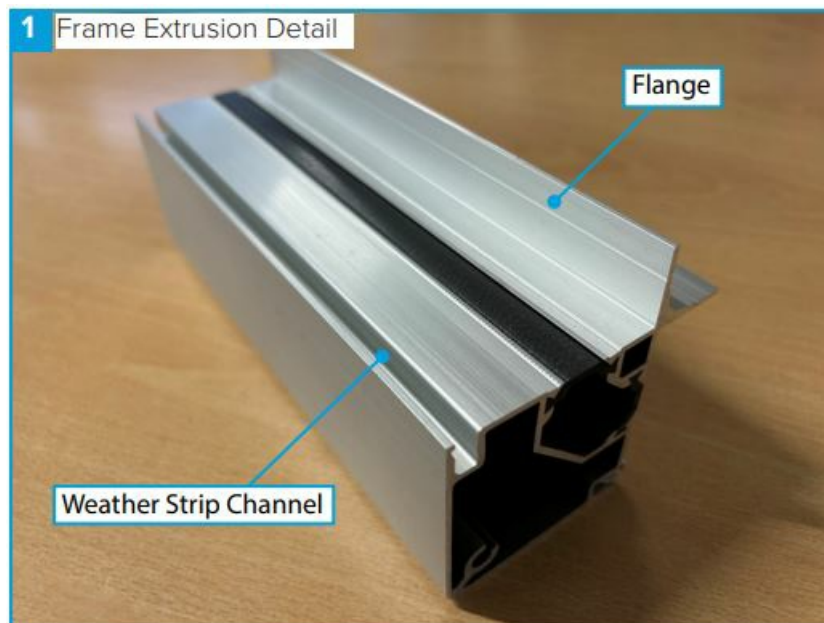
- Protective steel-toed shoes – when handling heavy objects.
- Full Finger Gloves (Marigold PU800 or equivalent) – when handling sheet metal components.
- Semi Fingerless Gloves (Marigold PU3000 3DO or equivalent) – when conducting light work on the unit requiring tactile dexterity.

Nuaire would always recommend a site-specific risk assessment by a competent person to determine if any additional PPE is required.

Installation

Sealing Strip

1. The black sealing strip must first be installed onto inner flange of the frame extrusion around the connection opening (Figure 1).



2. Starting at the centre of the lower flange (Figure 2), work your way around the opening, making sure the sealing strip is hammered into all four corners, using a ball-pein hammer (Figure 3).



IMPORTANT

Care should be taken not to damage the cable bulkhead connectors, located near the framework (Figure 4), when installing the sealing strip.

3. When you arrive back to the start of the sealing strip again, trim off the excess using side cutters. (Figure 5-7).



Grey Weather Strip

1. If the light grey weather strip (Figure 8) has not yet been installed into the channel provided in the frame (Figure 1), this must be installed, before continuing.

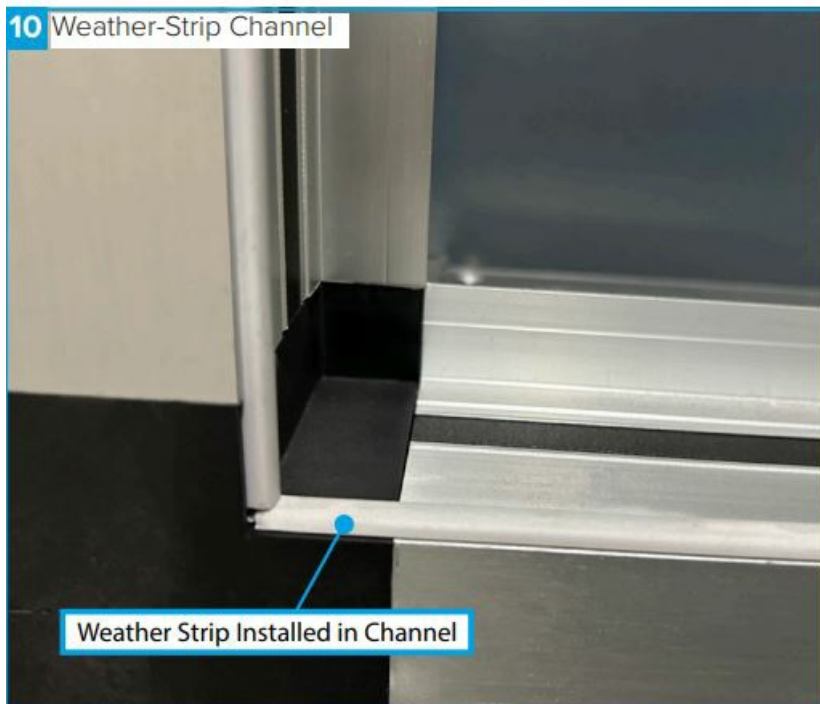
8 Weather Strip



9 Weather-Strip and its Channel

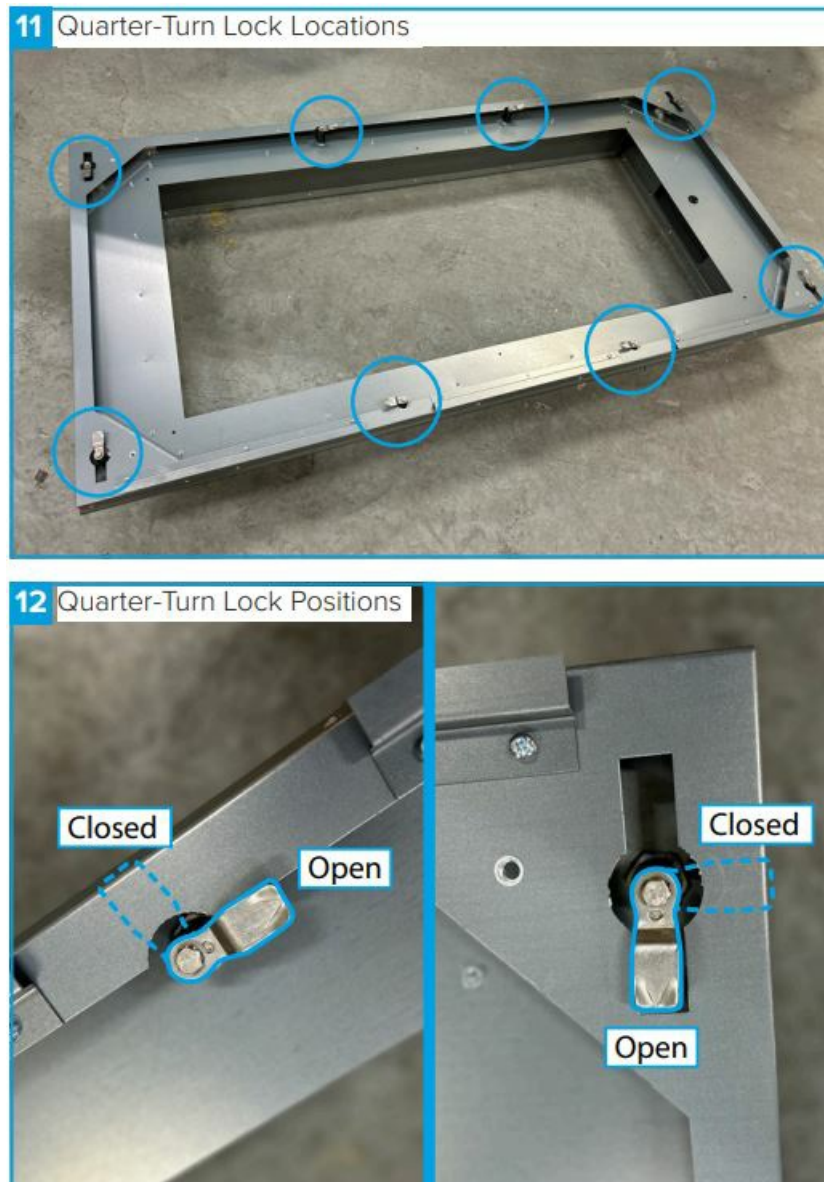


10 Weather-Strip Channel



End Panel

1. Before lifting the end panel into place the quarter-turn locks must be rotated into the 'Open' position (Figures 11 & 12).



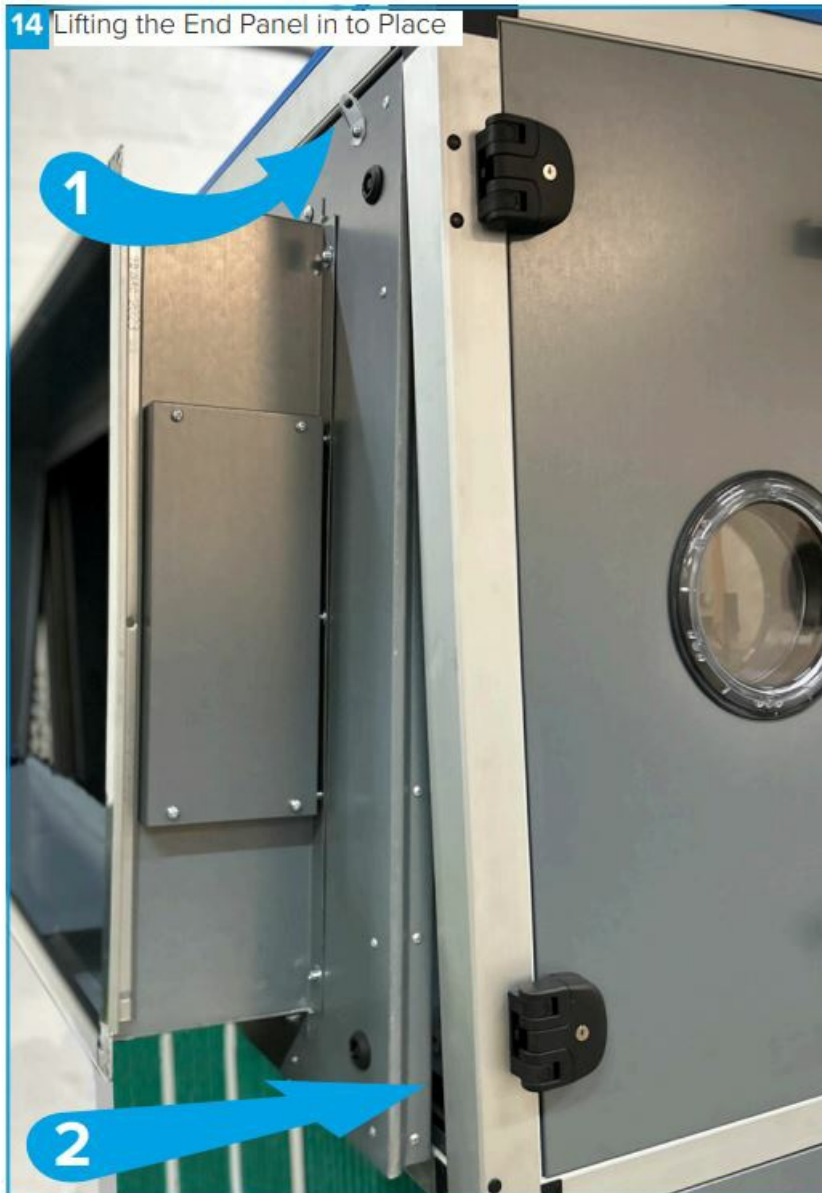
2. Ensure the return fold located on the back of the end panel, pictured in Figure 13, is located at the top before lifting the panel into place.

13 Return Fold on Top Edge of the End Panel



3. Lift the end panel into place (Figure 14) locating the return strip at the top of the panel behind the frame flange first (1), then pushing in the lower edge of the panel (2).

IMPORTANT: Please observe the correct lifting methods for the weight of the product, using mechanical lifting equipment where appropriate. Lifting lugs (Figure 15) are provided along the top edge of the end panels.

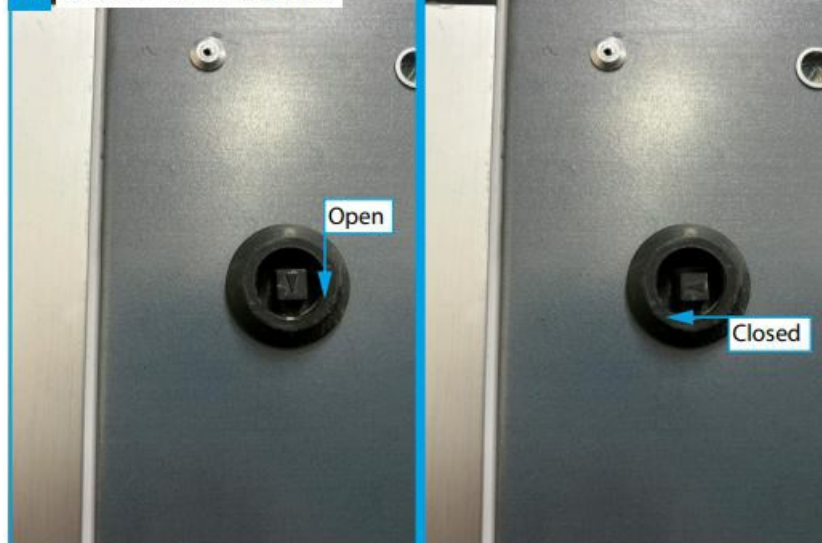


Close all of the quarter-turn locks using the key provided (Figure 16) ensuring all locks are now in the 'Closed' position in relation to the end of the panel (Figure 17).

16 Closing the Quarter-Turn Locks



17 Quarter-Turn Positions



IMPORTANT: Any ducting, silencers or other similar ancillaries attached to the flange connector must be independently supported by others.
The panel will now be fitted tight against the black sealing strip

18 Panel Sealed Against Sealing Strip



19 Panel Sealed Against Sealing Strip



20 Panel Sealed Against Sealing Strip




AFTER SALES AND REPLACEMENT PARTS

- For technical assistance or further product information, including spare parts and replacement components, please contact the After Sales Department.
- If ordering spares please quote the serial number of the unit together with the part number, if the part number is not known please give a full description of the part required. The serial number will be found on the identification plate attached to the unit casing.

Telephone 02920 858 400 aftersales@nuaire.co.uk

Technical or commercial considerations may, from time to time, make it necessary to alter the design, performance, and dimensions of equipment, and the right is reserved to make such changes without prior notice. Nuaire | Western Industrial Estate | Caerphilly | CF83 1NA | nuaire.co.uk

Documents / Resources

	<p>nuaire BPS V-CO - Vertical Boxer Packaged Solution with Connect Control [pdf] User Guide</p> <p>672108, 671760, BPS V-CO - Vertical Boxer Packaged Solution with Connect Control, BPS V-CO - Vertical, Boxer Packaged Solution with Connect Control, Packaged Solution with Connect Control, Solution with Connect Control, Connect Control, Control</p>
--	---

References

- [N Ventilation Systems for Better Indoor Air Quality | Nuaire](#)
- [User Manual](#)