



NT200E OBDII-EOBD Code Reader User Guide

[Home](#) » [NT200E](#) » NT200E OBDII-EOBD Code Reader User Guide 

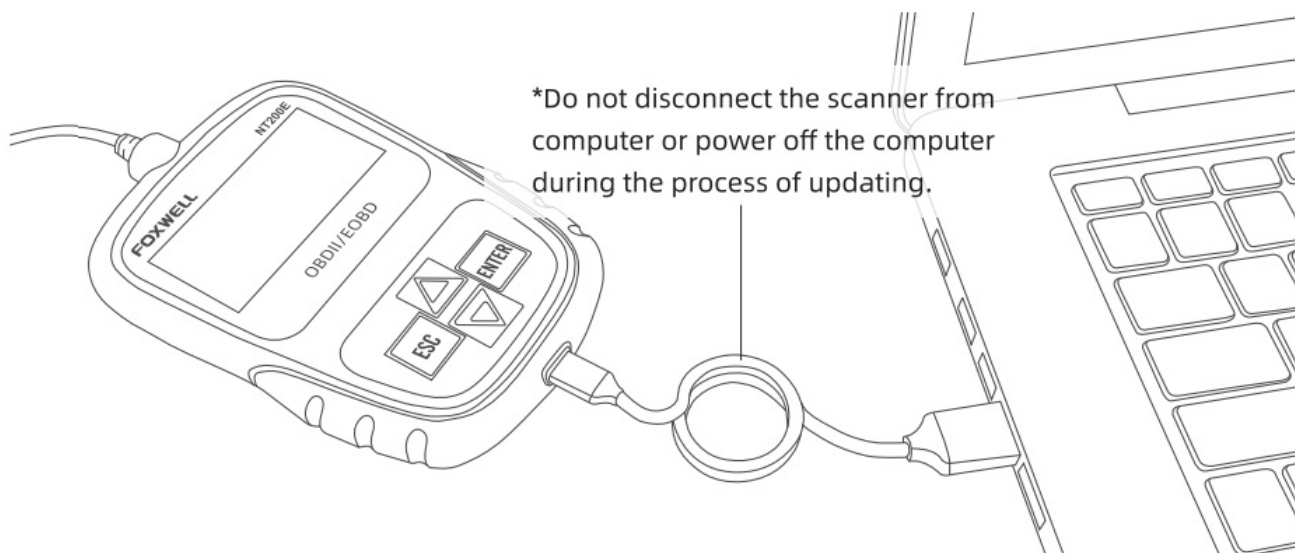
NT200E OBDII-EOBD Code Reader



Contents

- [1 Updating](#)
- [2 OVERVIEW](#)
- [3 NT200E/NT200C OBD II /EOBD CODE READER](#)
- [4 How to use NT200E/NT200C?](#)
- [5 OBD Service Modes](#)
- [6 Documents / Resources](#)
- [7 Related Posts](#)

Updating

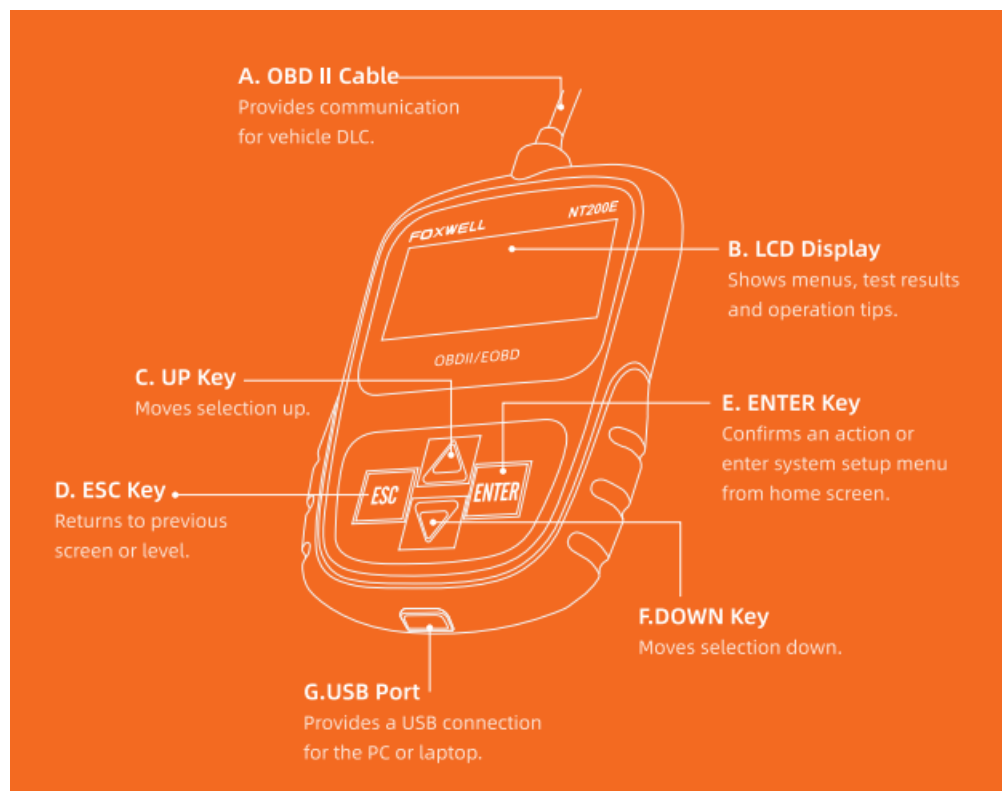


***No Registration Required/ PC:** Windows 7, Windows 8 and Windows 10 supported.

Updating

1. Download the update tool NT_WONDER and install
2. Enable NT_WONDER and connect NT20 0E/NT200C to the computer with USB cable.:
3. Click <Update on line> or <Update offline> to start updating according to the software version conditions.
4. An Update Finished Message displays when the update is completed.

OVERVIEW



Shenzhen Foxwell Technology co., Ltd.

Pictures illustrated here are for reference only and this Quick start Guide is subject to change without prior notice,

for more details, please refer to the user's Manual.

NT200E/NT200C 080 II /EO8D CODE READER

The NT200E/NT200C CAN OBDII/EOBD Code Reader is an innovative and affordable solution specially designed for DIYers to get easy and quick access to engine problems on all OBDII compliant vehicles sold worldwide since 1996.

Applicable Functions

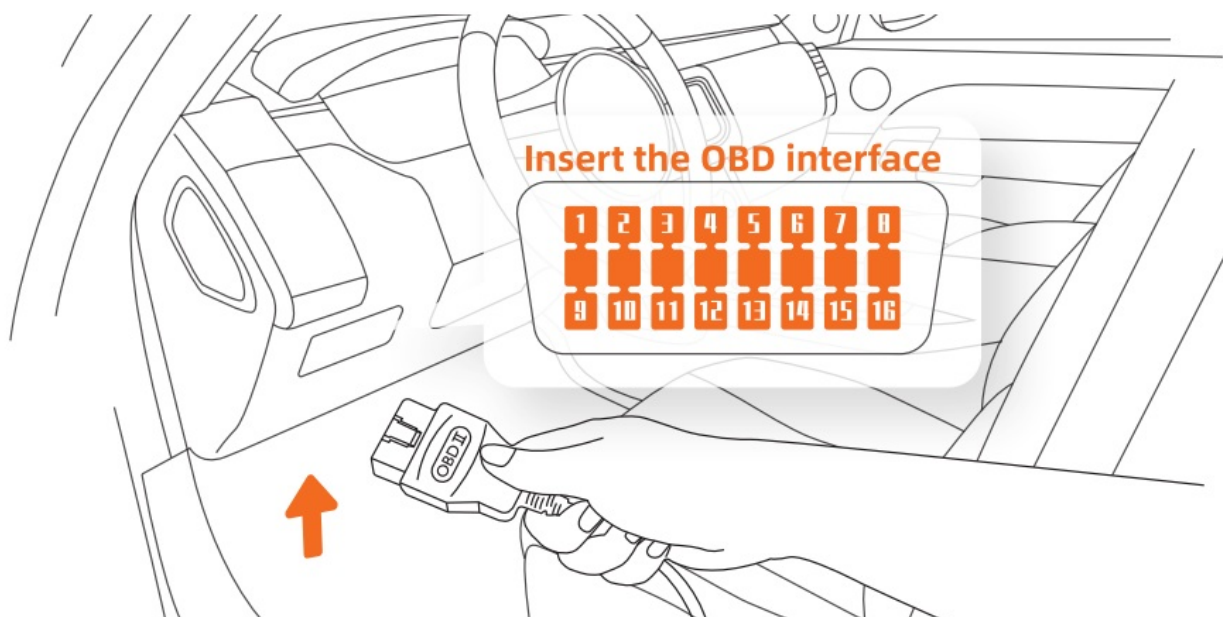
- ☒ Read Codes / Freeze Frame Data
- ☒ On-board Monitor Test/ Component Test
- ☒ Erase Codes I Live Data
- ☒ Vehicle Information I Modules Present
- ☒ I/M Readiness / 02 Sensor Test
- ☒ Unit of measure I DTC GUIDE

How to use NT200E/NT200C?

Before start diagnosis, please make sure :

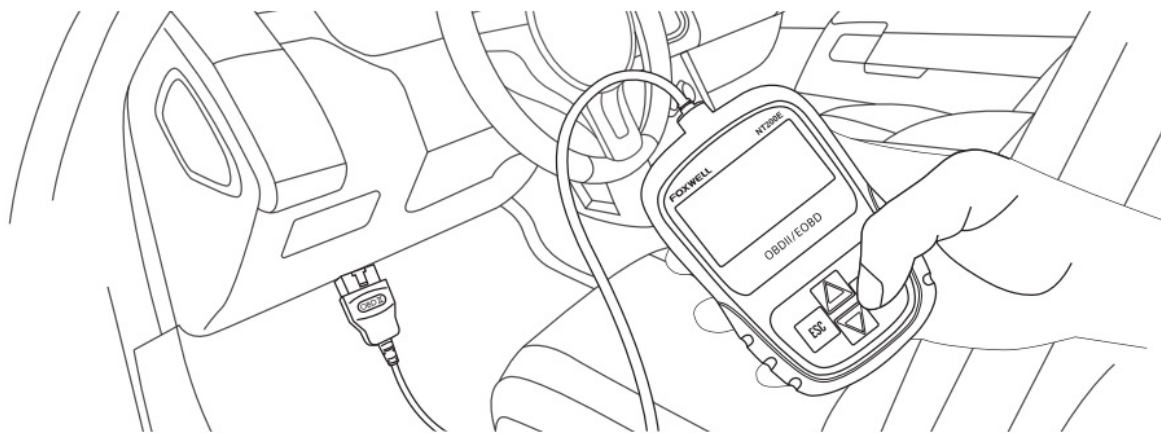
1. The ignition switch is turned to ON position.
2. The engine is off.
3. The vehicle battery voltage is between 10-14 volts.
4. The scanner is connected to the vehicle correctly.

Don't connect or disconnect the equipment while the ignition is on or the engine is running.



OBD-11 Connector and Pinout

1. Vendor Option/
2. SAEJ1850BUS+
3. Vendor Option/
4. Chassis Ground/
5. Signal Ground I
6. CAN High(ISO 15765-4) I
7. K-line of ISO 9141-2 and ISO 14230-4 / 8
8. Vendor Option /
9. Vendor Option /
10. SAE J1850BUS- /
11. Vendor Option /
12. Vendor Option /
13. Vendor Option/
14. CAN Low(ISO 15765-4) /
15. L-line of ISO 9141-2 and ISO 14230-4 /
16. Battery Power



1. Turn on the ignition of your car.

2. In the main menu, ENTER OBDII/EOBD, then NT200E/NT200C starts scanning, wait for several seconds, choose "yes/no" with right arrow key, and enter the Diagnostic Menu.



3. Choose "Read Codes"- Choose each selection to check. Pending Codes means the codes need to be confirmed after several driving cycle.



4. Enter "Live Data", graphing selected live data will also help locate bad sensors.



5. Enter "View Freeze Frame", which is a snapshot of critical vehicle operating conditions automatically recorded by the on-board computer at the time DTC(Diagnostic Trouble Code) set. Check the data which you need to locate bad sensors.



6. O2 Monitor Test, On-Board Monitor Test, Component Test, the availability of these tests may depend on the actual condition of your vehicle.

7. Enter "I/M Readiness

OBd Service Modes

***Mode 1:** Real-time data, MIL, IM monitors.

***Mode 2:** Freeze frame.

***Mode 3:** Stored DTCs.

***Mode 4:** Clear/Reset DTCs and emissions-related diagnostic information.

***Mode 5:** O2 monitoring tests, supported.

***Mode 6:** Test results for continuously and non continuously monitored systems, supported.

***Mode 7:** Pending DTCs.

***Mode 8:** Request control of on-board-system, test or component (bidirectional controls).

***Mode 9:** Request VIN and other data.

***Mode 10:** Allows a scan tool to obtain permanent codes.

Contact Us

For service and support, please contact us.

Website: www.foxwelltech.us

E-mail: support@foxwelltech.com

Service Number: + 86-755-26697229

Fax: + 86-755-26897226

Pictures illustrated here are for reference only and this Quick Start Guide is subject to change without prior notice. For more details, please refer to the User's Manual.

Documents / Resources



[NT200E NT200E OBDII-EOBD Code Reader](#) [pdf] User Guide

NT200E OBDII-EOBD Code Reader, NT200E, OBDII-EOBD Code Reader, EOBD Code Reader, Code Reader, Reader

