

NSL
Up-02-12V-BLK
RGBW Uplight



NSL Up-02-12V-BLK RGBW Uplight Installation Guide

[Home](#) » [nsl](#) » NSL Up-02-12V-BLK RGBW Uplight Installation Guide 

Contents

- [1 NSL Up-02-12V-BLK RGBW Uplight](#)
- [2 Product Usage Instructions](#)
- [3 IMPORTANT SAFETY INSTRUCTIONS](#)
- [4 PRODUCT OVERVIEW](#)
- [5 SPECIFICATION](#)
- [6 INSTALLATION](#)
- [7 SET UP YOUR PHONE](#)
- [8 Documents / Resources](#)
 - [8.1 References](#)
- [9 Related Posts](#)

NSL

NSL Up-02-12V-BLK RGBW Uplight



Product Specifications:

- **Item:** Spotlight
- **Voltage:** 9-17VAC/DC
- **Wattage:** 0-8W (adjustable)
- **Color Temperature:** RGB-CCT tunable
- **CRI:** >65
- **Beam Spread:** Adjustable
- **IP Rating:** IP65
- **Material:** Aluminium
- **Operating Temperature:** -40°C to 40°C

Product Usage Instructions

Installation:

1. Protect the main low voltage cable by routing it in close proximity to the luminaire or fitting, or next to a building structure.
2. Do not bury the cable except for a maximum of 6 inches (15.2cm) to connect to the main low voltage cable.
3. Cut off the length of the cable so that it is connected to a connector within 6 inches (15.2cm) from a building structure, a luminaire, or fitting.

Setup:

1. Connect the fixture with the stake.
2. Connect the lead wire with the power supply cable.

Setting Up Your Phone:

1. Install the Tuya smart application by scanning the QR code or downloading from Apple Store or Google Play.
2. Ensure Bluetooth/Wi-Fi on your phone is turned on. If it's a Wi-Fi-Bluetooth version, turn on both Bluetooth and Wi-Fi.
3. Join your local Wi-Fi network via the Tuya app (supports only 2.4GHz Wi-Fi networks).

Frequently Asked Questions (FAQ):

Q: What should I do if I encounter issues during installation?

A: If you face any problems during installation, please refer to the troubleshooting section of the user manual or contact our customer support for assistance.

Q: Can I adjust the color temperature of the spotlight?

A: Yes, the color temperature of the spotlight is RGB-CCT tunable, allowing you to adjust it according to your preference using the provided controls.

IMPORTANT SAFETY INSTRUCTIONS

WARNING

This fixture is intended for installation in accordance with local codes and the National Electric Code (NEC). Failure to adhere to these codes and instructions may result in serious injury, property damage and void the warranty.

THE MAIN LOW VOLTAGE CABLE FROM THE LUMINAIRE IS TO BE:

Protected by routing in close proximity to the luminaire or fitting, or next to a building structure such as a house or deck.

Not to be buried except for a maximum of 6 inches (15.2cm) in order to connect to the main low voltage cable.

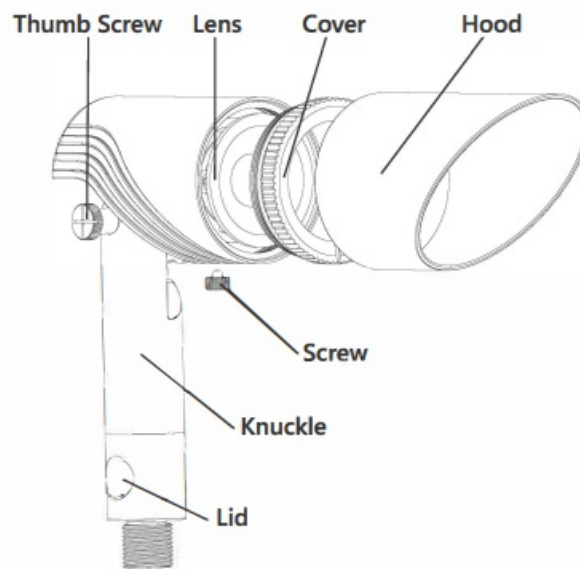
Have the length cut off so that it is connected to a connector within 6 inches (15.2cm) from a building structure, a luminaire or fitting.

WARNINGS

- These instructions do not intend to cover all variations in installation, operation maintenance or mounting situations.
- Make sure that the power is turned OFF before installing or servicing this fixture.
- Wiring requires waterproof wire connectors
- THE LIGHTED LAMP IS HOT. Luminaire can be extremely HOT in a short time. Do not touch any hot luminaire, lens or housing while power is on.
- Keep lamp away from materials that may burn.
- Do not operate the fixture with a damaged or missing lens or shield.
- Fixture(s) should be used "ONLY" with low voltage landscape power units that do not exceed 25A, 15V.
- The power units reduce the voltage from 120 volts to 12 volts.
- The main cable from power units should be buried for less than 6 inches under the ground level and can be purchased from your local electric supply house.
- **Warning:** Fixture(s) wires have to be run in close proximity to fixture(s) and not buried more than 3 inches.

- Dig a small hole and insert fixture spike into ground and turn on power unit.

PRODUCT OVERVIEW

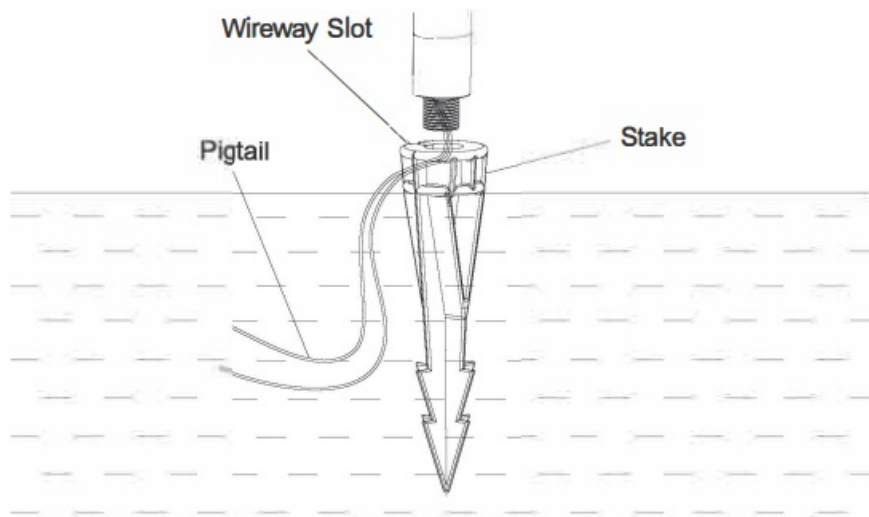


SPECIFICATION

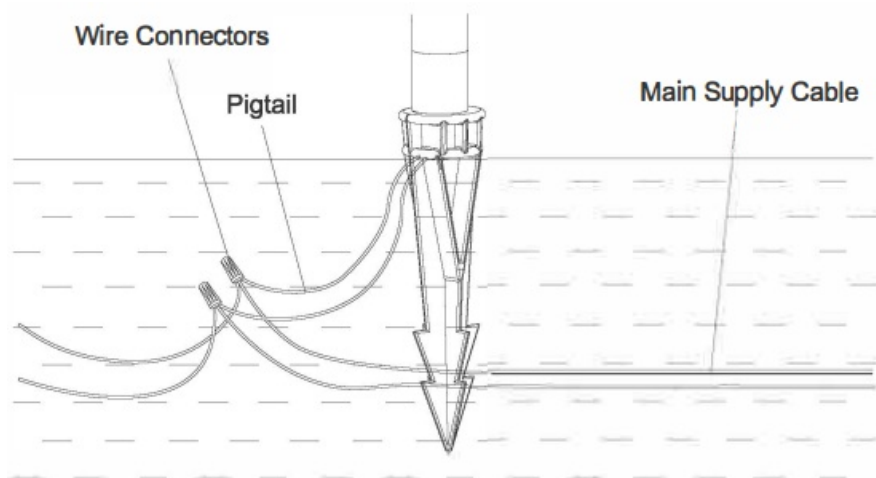
Item	Spotlight
Voltage	9-17VAC/DC
Wattage	0-8W(adjustable)
Color Temperature	RGB-CCT tunabel
CRI	>85
Beam Spread	24°/36°/60°
IP Rating	ee:65
Material	Aluminium
Operating Temperature	-40" C-40" C

INSTALLATION

1. Connect the fixture with the stake



2. Connect the lead wire with power supply cable



SET UP YOUR PHONE

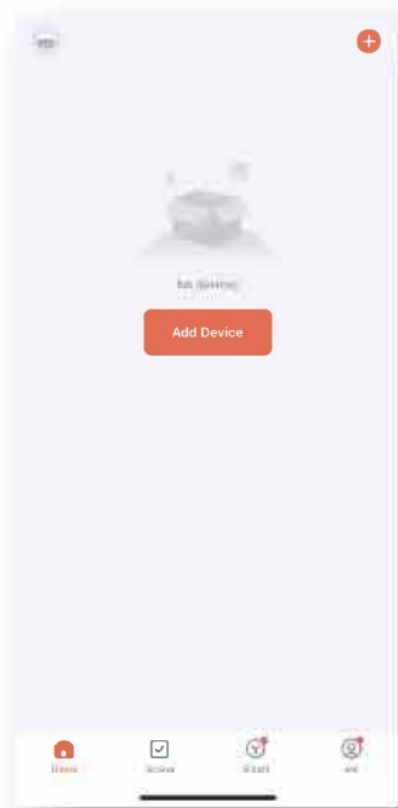
Step 1: Install the Tuya smart application by scanning the QR code or you can find it in Apple Store and Google Play, make sure Bluetooth/WiFi on your phone is on. If the product is the WiFi-Bluetooth version, turn on both Bluetooth and Wi-Fi, then join in your local Wi-Fi network via Tuya app (only supports 2.4GHz Wi-Fi networks).



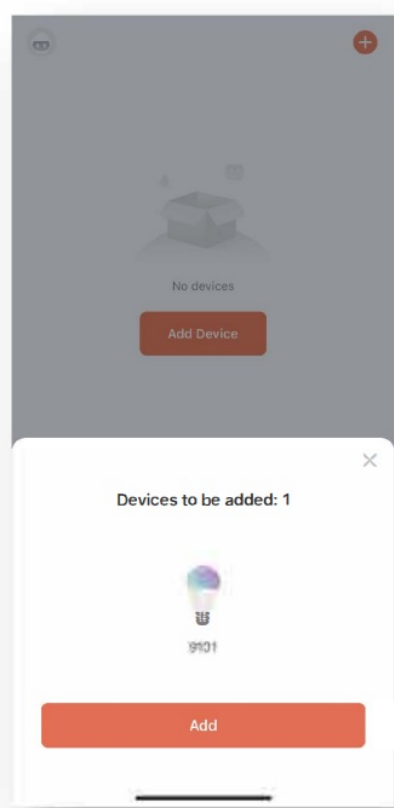
▲ Figure 1

Step 2: Power on the lighting device (with low voltage), tap the Tuya icon on your phone to access Tuya Smart App. The interactive interface is shown in Figure 2 below.

Step 3: If the lighting device is in pairing mode, your phone will automatically discover the lighting device. Simply tap "Add" to add it, as shown in Figure 3 below.



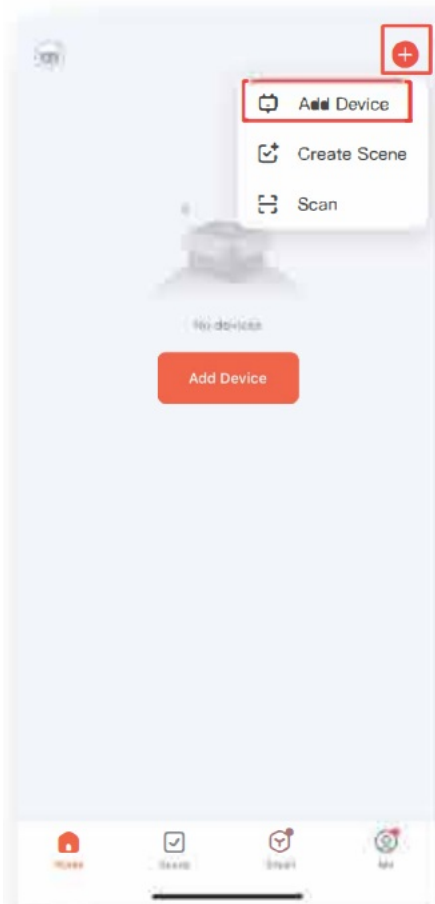
▲ Figure 2



▲ Figure 3

Step 4: If the device doesn't pop up automatically during the Step 3 process, tap the upper right corner [o] button, then select "Add Device" from the dropdown menu that appears, as shown in Figure 4.

Step 5: At this point, the Tuya app will search for the device again. When the device is detected, tap "Add" to add it, as shown in Figure 5.



▲ Figure 4



▲ Figure 5

Step 6: Alternatively, you can manually add the device by selecting and adding it from the “Lighting” category. Choose “BLE” for Bluetooth version devices and “BLE Wi-Fi” for WiFi-Bluetooth devices, as shown in Figure 6.

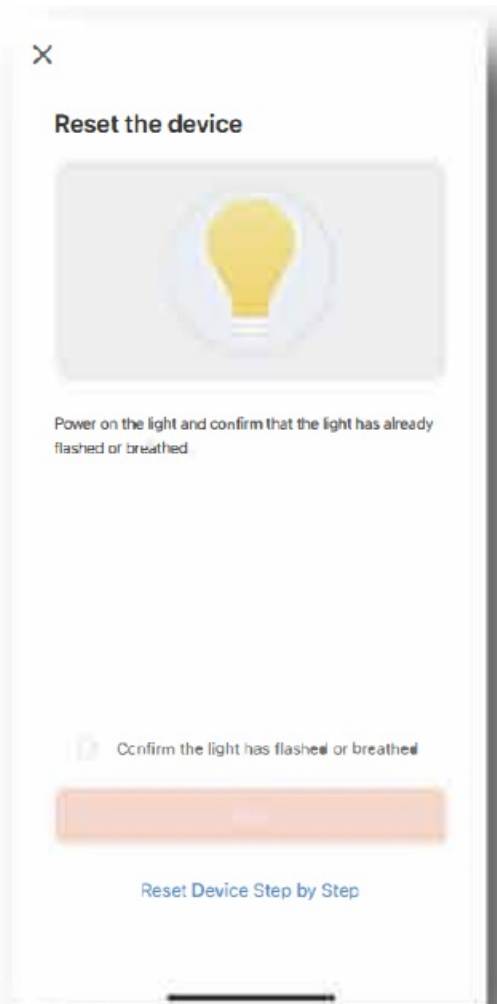
Step 7: If your phone still can’t detect the lighting device after Step 6, ensure that the device is powered on (with low voltage). Open the cover of the knuckle and reset the device by pressing the reset button five times or by power cycling the lighting device (turning it off and on) five times rapidly. When the device is in a breathing lighting mode, it indicates that the device has been reset (the light will blink stronger and weaker 3 to 4 times before maintaining a constant

brightness). The image below (Figure 7) shows the prompt on your phone. If the lighting device has blinked before, click the circle on the left side of “Confirm the light has flashed or breathed,” and then click “Next.” Your phone will automatically search for the lighting device.

Repeat Steps 3, 4, 5 and 6 to establish the connection between the lighting device and your phone.



▲ Figure 6

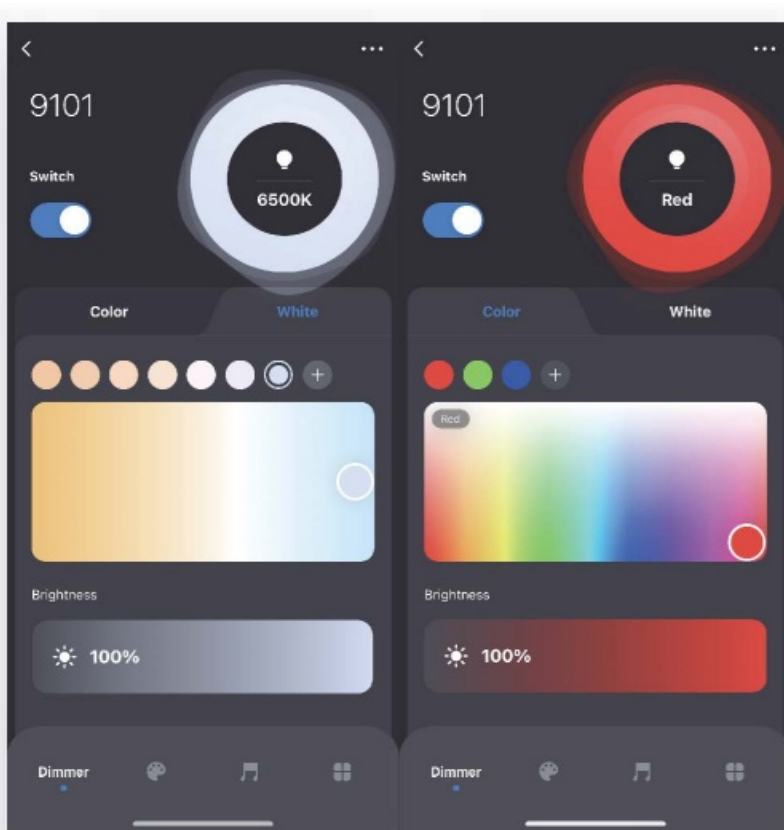


▲ Figure 7

Step 8: Access the user interface to rename and group the lighting devices. Customize the light settings according to your preferences, including brightness, white light color temperature, and scene modes. Refer to Figures 8, 9, and 10 for guidance.



▲ Figure 8




▲ Figure 9

▲ Figure 10

Step 9: When the distance between your phone and the lighting device exceeds the maximum range, the phone won't be able to control the lighting device, and the device will maintain the settings from its last connection with the phone. Once your phone is within the maximum connection range of the lighting device, open the Tuya app then you can simply continue using your phone to control the lighting device.

Step 10: If you need to use another phone to control the lighting device, delete the lighting device via the Tuya Smart's device management on your phone (tap the [:] in the upper right corner of the screen). The lighting device will reset automatically. If you haven't removed the lighting device via Tuya smart, manually reset the device by pressing the reset button or power on/off it five times rapidly. Afterward, repeat Steps 2 to 8 to connect the new phone to the lighting device.

Documents / Resources

	<p>NSL Up-02-12V-BLK RGBW Uplight [pdf] Installation Guide Up-02-12V-BLK RGBW Uplight, Up-02-12V-BLK, RGBW Uplight, Uplight</p>
---	---

References

- [User Manual](#)

[Manuals+](#), [Privacy Policy](#)

This website is an independent publication and is neither affiliated with nor endorsed by any of the trademark owners. The "Bluetooth®" word mark and logos are registered trademarks owned by Bluetooth SIG, Inc. The "Wi-Fi®" word mark and logos are registered trademarks owned by the Wi-Fi Alliance. Any use of these marks on this website does not imply any affiliation with or endorsement.