



NOVUS N Control 6000 IP Recorders User Manual

[Home](#) » [Novus](#) » NOVUS N Control 6000 IP Recorders User Manual 

noVus[®]



User's manual
N CONTROL 6000

Contents

1 FOREWORD INFORMATION

1.1 Main characteristics

1.2 Recommended PC specification

2 INSTALLATION AND LAUNCHING OF THE SOFTWARE

2.1 Installation of the software.

2.2 Software startup

2.3 Login window

2.4 Record partition settings

2.5 Application interface

3 Server processes

4 Basic functionality support.

4.1 Device adding

4.2 Change the device's IP address

4.3 Manually adding a device.

4.4 Adding devices to the zone.

4.5 Removing a device from the list.

5 Displaying images from devices

5.1 Live view

5.2 Records playback

5.3 Copying recordings from the playback window

5.4 Copying recordings to the remote device

6 Documents / Resources

6.1 References

7 Related Posts

FOREWORD INFORMATION

Main characteristics

- Software used for connections to 6000 series NOVUS NVRs & NHDRs.
- Multiscreen environment;
- Group device management;
- Advanced user management;
- Site maps feature;
- Local record and playback;
- H.265 and H.264 compression;
- Support of alarm event scenarios;

Recommended PC specification

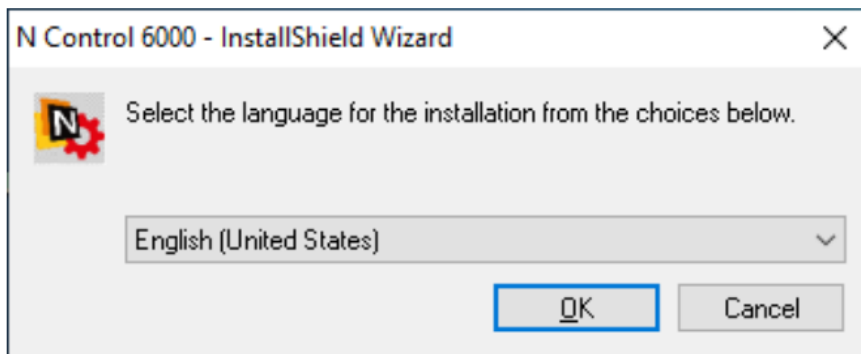
The PC hardware requirements are listed below:

1. Intel i3 CPU Processor or higher. I5-7400 3.0GHz recommended.
2. RAM Memory DDR3 4 GB. 16GB recommended.
3. OS : Windows10 (32bit\64bit) Pro, Windows8 (32bit\64bit)
4. The network adaptor 100/1000 Mb/s
5. Graphic card NV GT430, AMD HD6570 or better. Nvidia GeForce GTX1060 6GB recommended.
6. Hard disk 500 GB SATA minimum.

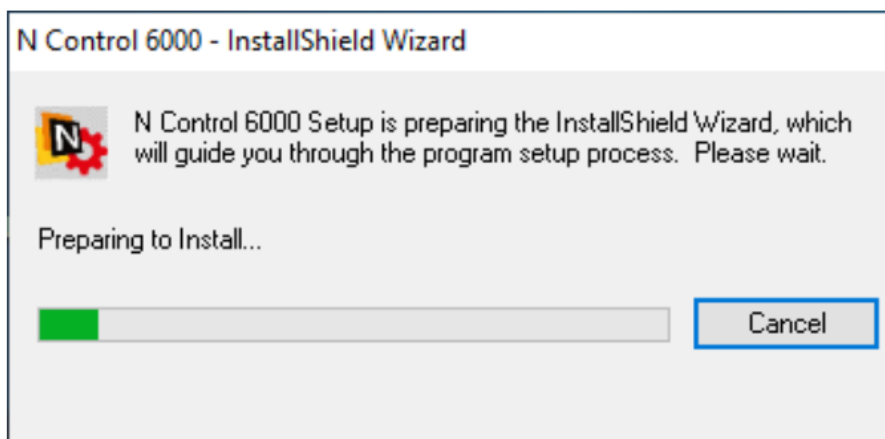
INSTALLATION AND LAUNCHING OF THE SOFTWARE

Installation of the software.

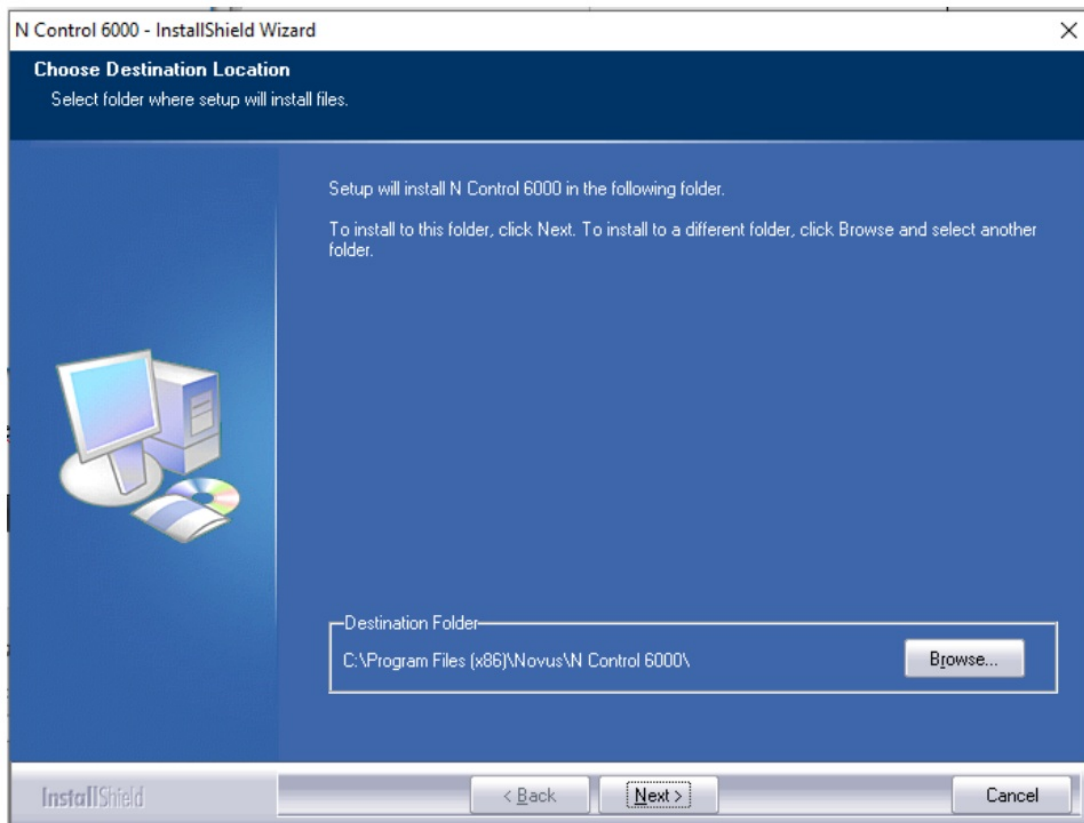
Download N Control 6000 from www.novuscctv.com and save it on the local drive. Run the software to begin the installation. Setup windows is displayed (as shown below). Press OK to continue, or Cancel to exit the installation.



After confirming the language selection, the installer prepares the Installation Wizard.

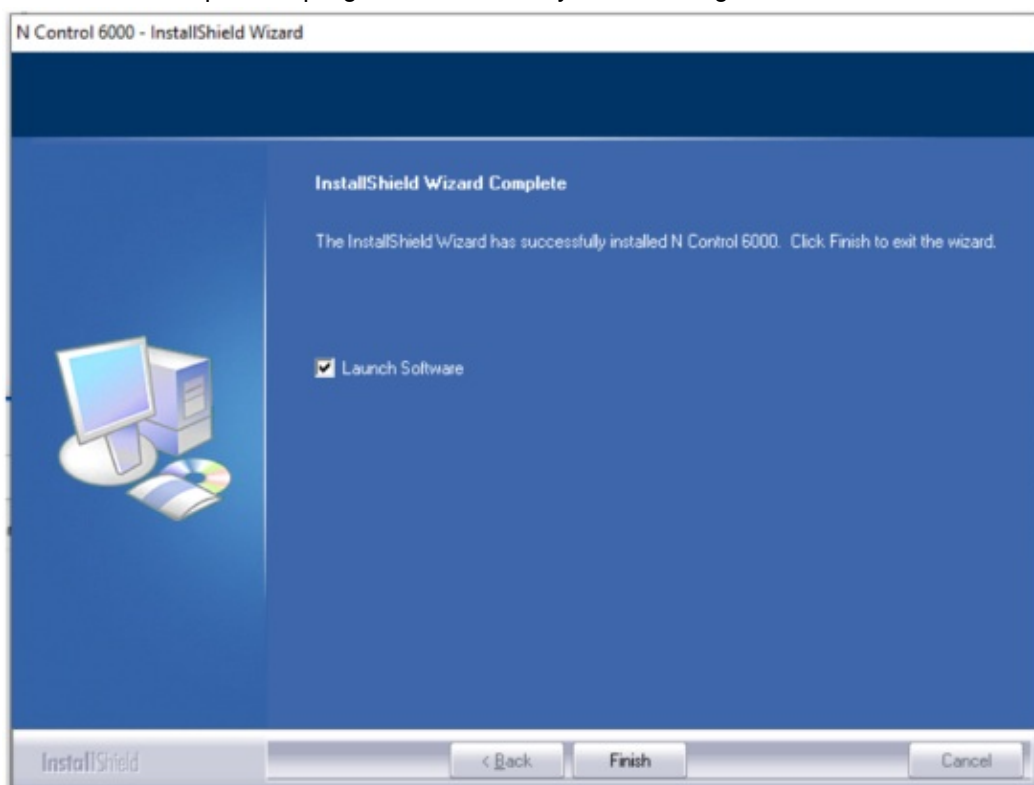


Select the installation path. Press the Browse button to select new installation folder. Press Next to continue. The default path is C:\Program Files (x86)\Novus\N Control 6000.



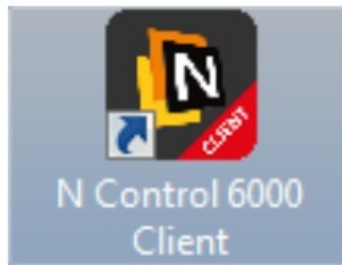
After selecting the installation path, the program installs automatically. When the operation is complete the window below appears.

Choose Launch Software to open the program automatically after clicking the Finish button.



Software startup

The N Control 6000 program can be started by clicking on the MonitorClient.exe file (in the directory where installed software) or with the N Control 6000 Client icon located on the desktop.



Login window

After starting the software, the login window appears.

A screenshot of the 'Login' window. The window has a dark gray title bar with the text 'Login' and a close button (X). The main area is light gray. It contains a 'User Name' dropdown menu with 'root' selected, a 'Password' text field with four dots, two checkboxes labeled 'Remember Password' and 'Auto Login', and three buttons at the bottom: 'Login', 'Cancel', and 'Reset password'.

User name – select the user from the list. At first, start here is only a super administrator account available called root. After adding more users, the first time you log in, enter their names. The next time you log in, they will be on the list choice.

Password – a place to enter the password of the selected user. The default administrator password is passed.

Remember Password – the option saves the password in the program, the user will not need it type next time

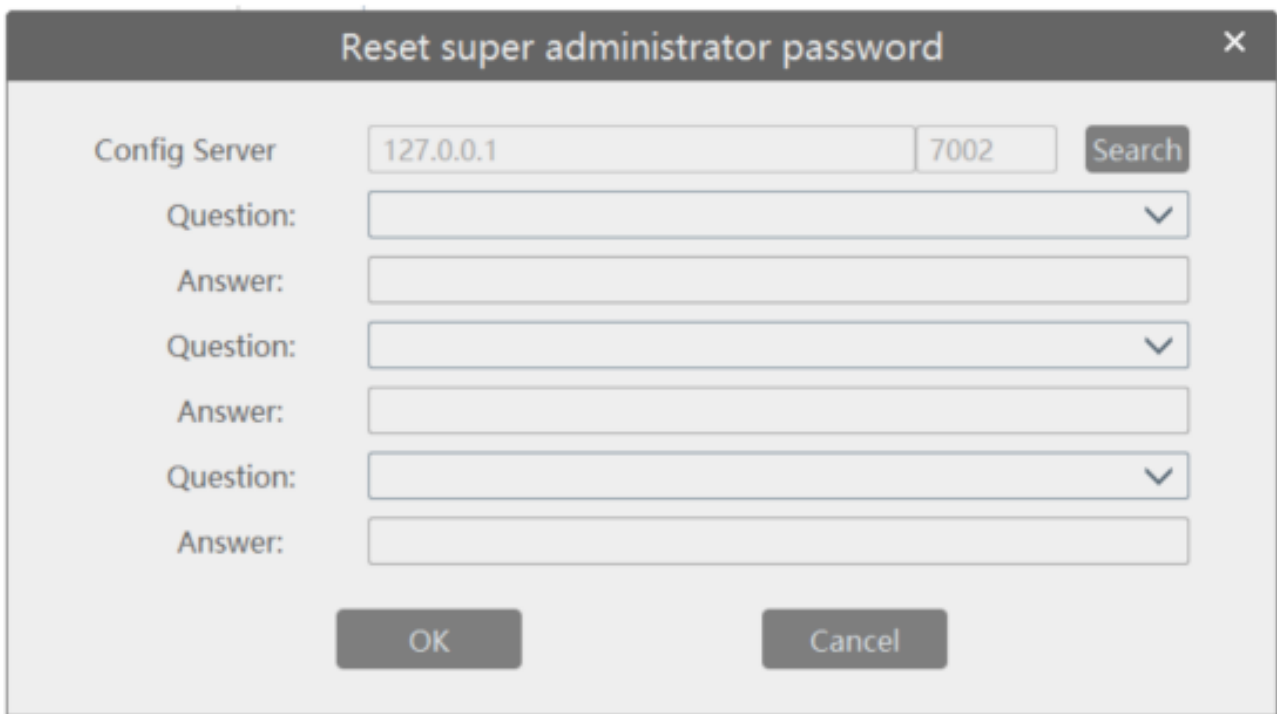
Auto Login – the option saves the password in the program, the user will not need to type it next time

Login – Log into the account of the indicated user.

Cancel – resignation from starting the software.

Reset password – the option to give a new password to the super administrator account. At the first login is not available. To use this option, you must first select 3 security questions and define the answers.

After pressing the Reset password button, the following window appears.

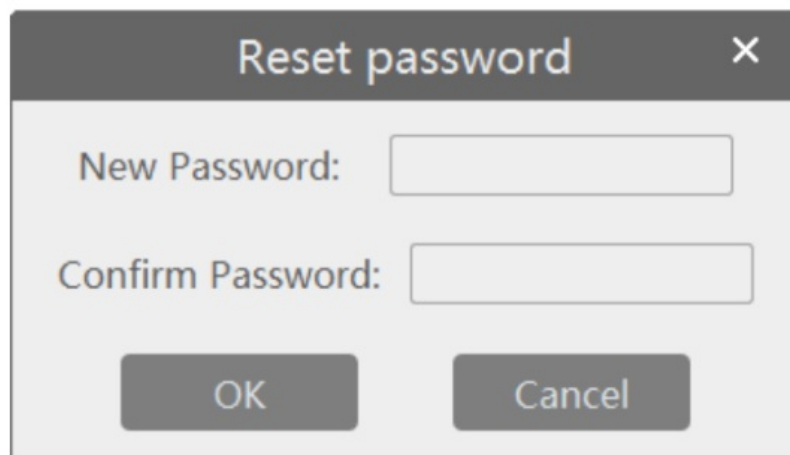


The dialog box is titled "Reset super administrator password" with a close button (X) in the top right corner. It contains the following fields and controls:

- Config Server:** A text field containing "127.0.0.1" and a port field containing "7002", followed by a "Search" button.
- Security Questions:** Three sets of "Question:" (dropdown menus) and "Answer:" (text fields) pairs.
- Buttons:** "OK" and "Cancel" buttons at the bottom.

After pressing the Search button, the defined security questions appear. Questions are defined in the Accounts and permissions section, User Account Settings tab, button Edit security questions.

After correctly filling in the answer and pressing the OK button, a window with fields for entering a new password appears.



The dialog box is titled "Reset password" with a close button (X) in the top right corner. It contains the following fields and controls:

- New Password:** A text field.
- Confirm Password:** A text field.
- Buttons:** "OK" and "Cancel" buttons at the bottom.

After entering the new password twice, you can log into the software. All user account settings can be changed in the Accounts and Permissions section.

Record partition settings


During the first run (or when we do not select a partition). After logging in, the application will display the window for selecting the partition for saving the recordings by the program. In the program window, select the partition on which the program is to save by marking the checkbox and pressing the OK button.

Record Partition Setting				
<input type="checkbox"/>	Partition Symbol	Partition ...	Remain Size	
<input type="checkbox"/>	C(System Driver)	930GB	348GB	
<input type="checkbox"/>	S	2963GB	1576GB	
<input type="checkbox"/>	X	2963GB	1576GB	
<input type="checkbox"/>	Y	5383GB	1221GB	

OK Cancel

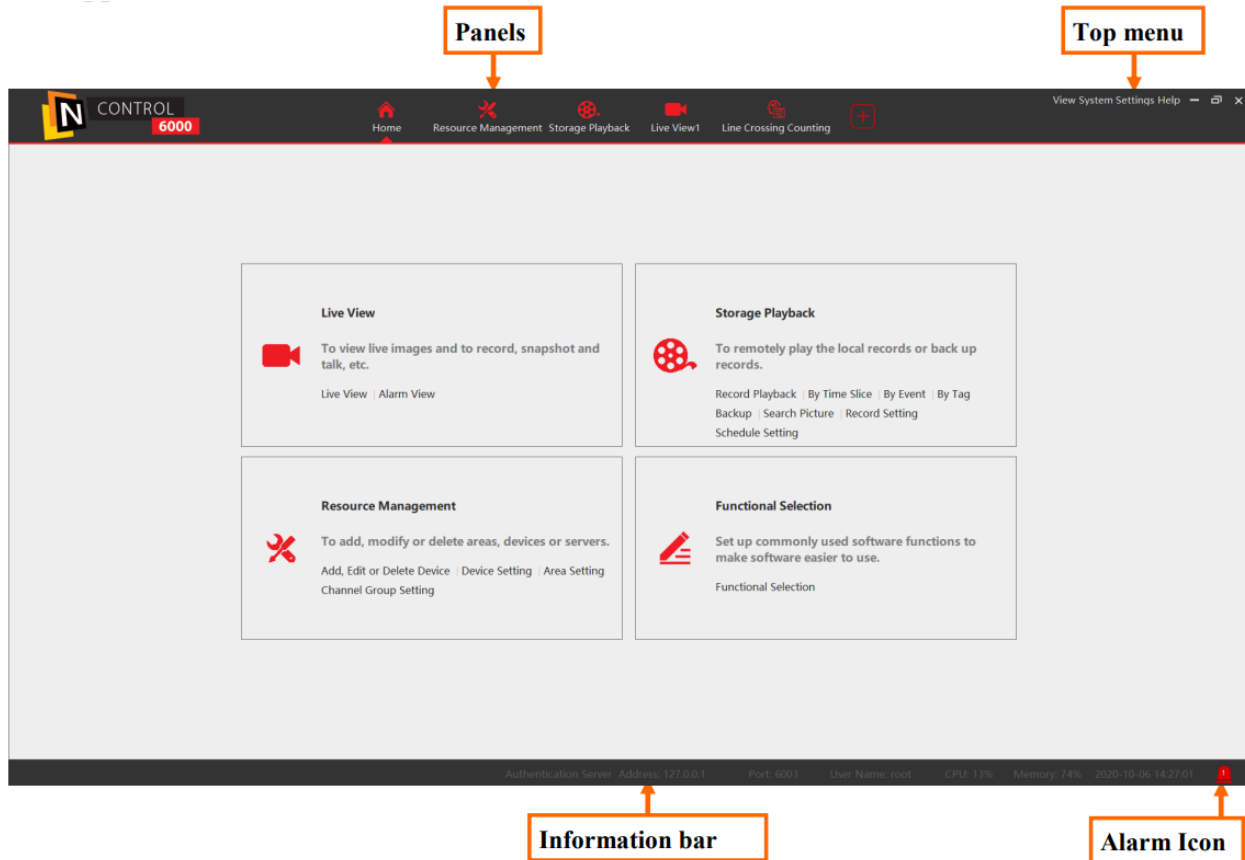
It is not recommended to select the system partition or with less than 50 Gb of free space. Saving recordings on the system partition may cause partition overflow and unstable system operation. Therefore, after selecting the system partition, a warning window will appear. Clicking the OK button will confirm the selection and clicking the Cancel button will cancel the selection.

Question

 If you select the system partition as the storage partition, there is a risk of damage to the system.If the system partition has less than 50GB of free space, some previous records will be overwritten. Are you sure to continue?

OK Cancel

Application interface



Panels – displays the icons of the currently open application panels. By clicking on the panel icon it appears in the main window.

The + button opens a new live camera view window. After entering in particular settings, when a new camera preview window is opened, more are added on the bar icons. They can be closed with a cross in the corner of the icon (it appears when you hover over the icon). Individual panels can be moved as a separate application window to another monitor.

Menu – allows you to switch between live view (View), enter settings available functions (System Settings) or check the software information (Help).

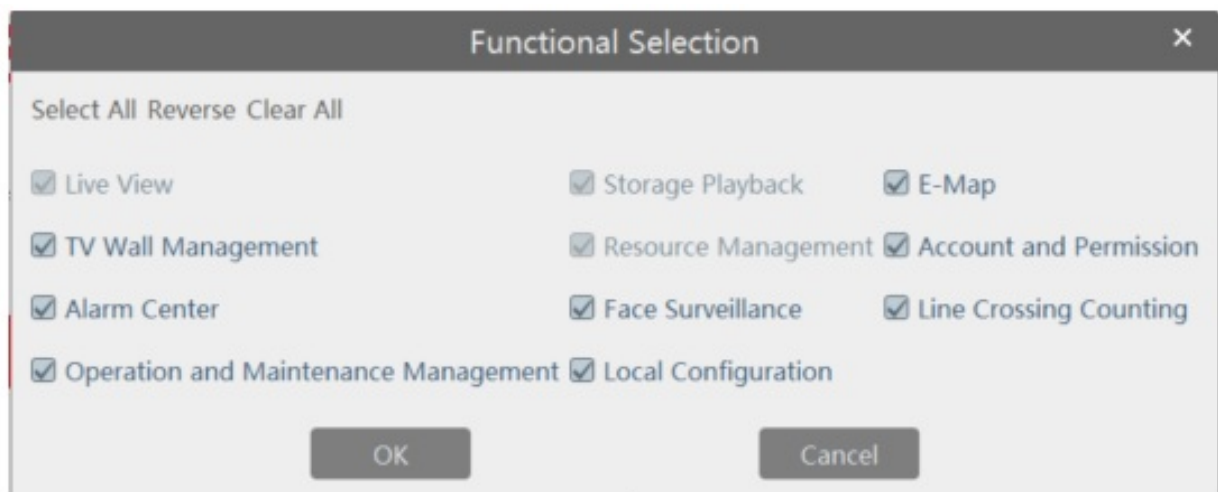
Main window – active panel displayed. The initial Start panel displays a list of panels grouped in sections.

Information bar – displays the authentication server IP address, communication port, name logged in user, unit load level (CPU and memory), current date, and time.

The red color of the unit load level additionally warns against overload.

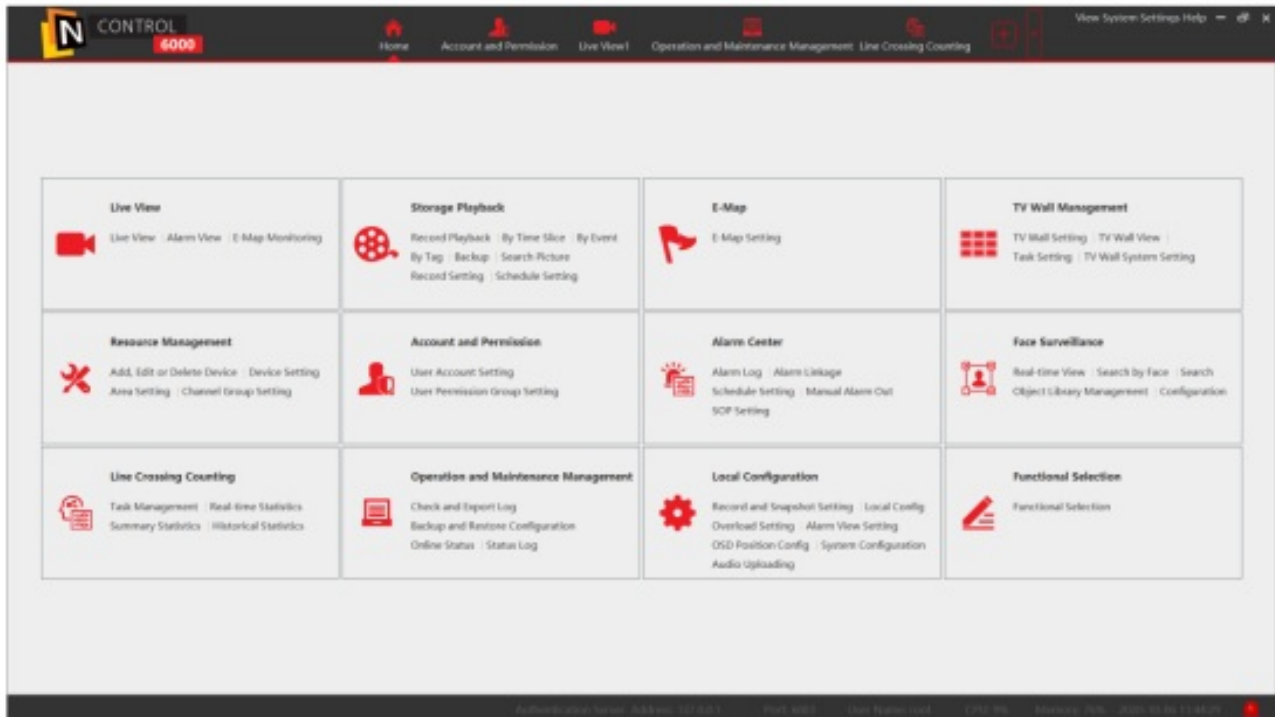
Alarm Icon – allows you to quickly display a list of current alarms.

The Start panel shows 6 sections at the beginning. The last section Functional Selection allows you to enable and turn off individual sections. After clicking on this section, the following window appears:



Live view, Storage playback, Resource management sections are mandatory.
The other sections can be turned on as an option for setting up, and turned off when they are not needed.
There are buttons at the top of the window:

- Select All – selects all possible options.
- Reverse – inverts the selected selection (except for sections that cannot be switched).
- Clear All – deselects all sections.



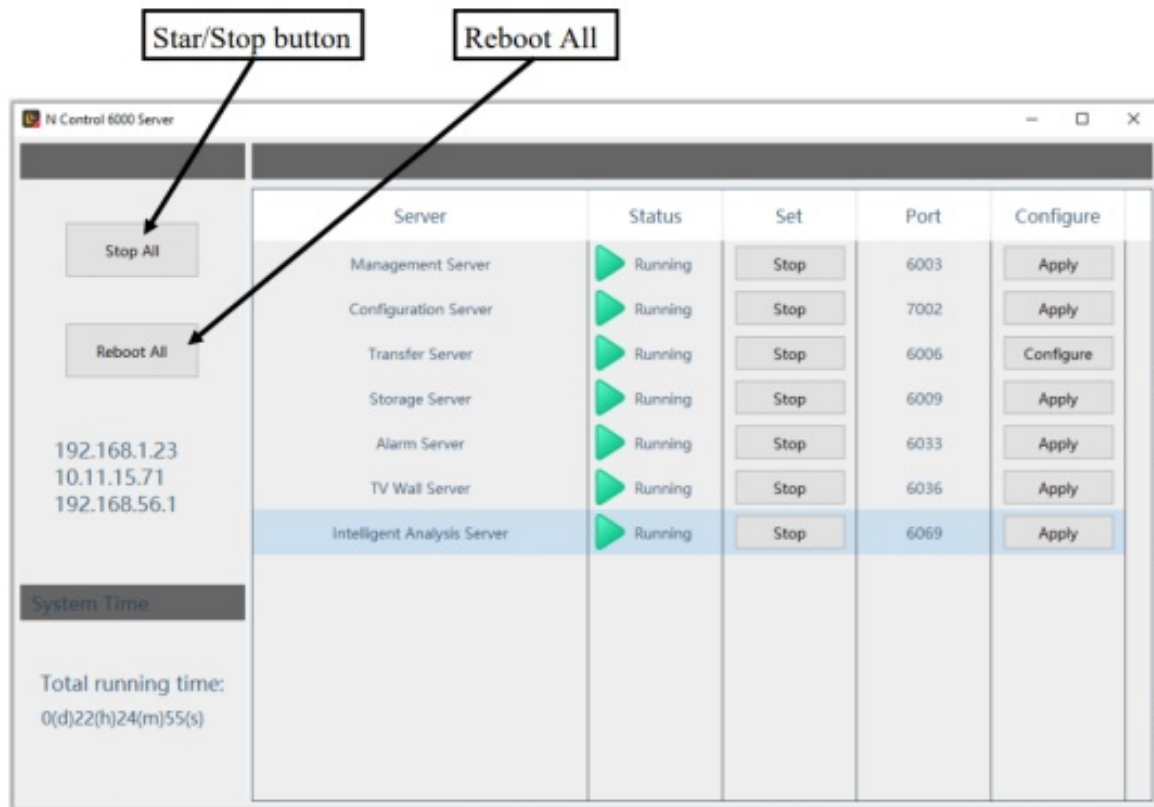
After enabling all options, we have a maximum of 12 sections with all possible functions.

Server processes

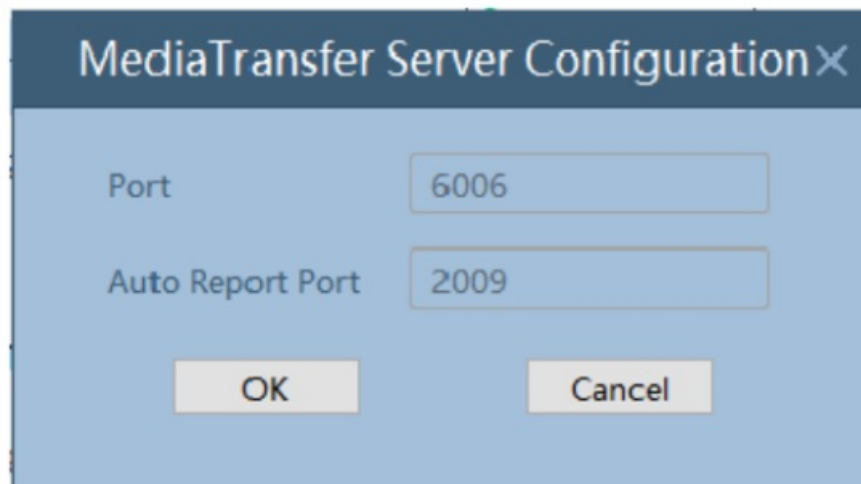
When the N Control 6000 software is started, server processes are started in the background.
They can be viewed using the N control 6000 Server icon in the right part of the taskbar.



After clicking on the icon, a window showing the status of server processors appears. Clicking the Stop All button stops all N Control processes. After clicking Start All N control processes should start.



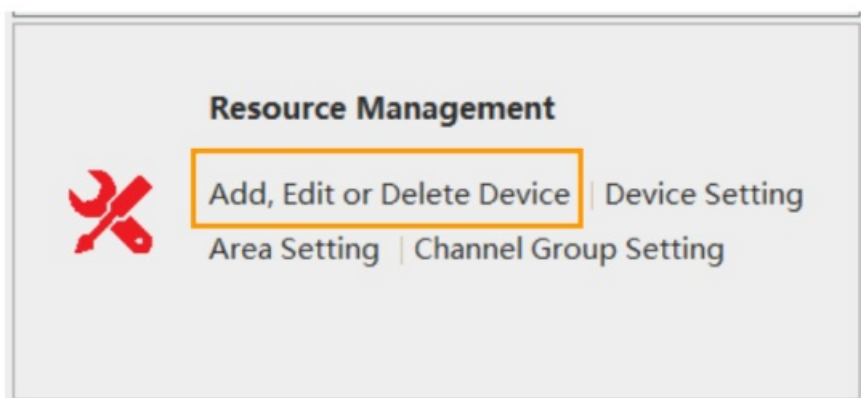
After clicking the Configure button, a window for specifying the port for the service will open.



Basic functionality support.

Device adding

To add a device, find the Resource Management section



To add a device, find the Resource Management section add click on Add, Edit or Deleted Device. In the window that appears, click the Add button in Encoding device

Add, Edit or Delete Device

Device Setting

Area Setting

Channel Group Setting

Device Type

Encoding Device (Online/Total number:0/0)

Decoder (Online/Total number:0/0)

Intelligent Analysis Server (Online/Total number:0/0)

Storage Server (Online/Total number:0/0)

Media Transfer Server (Online/Total number:0/0)

Alarm Server (Online/Total number:1/1)

TV Wall Server (Online/Total number:0/0)

Add

Delete

Select Area

Select Transfer Server

Select Storage Server

Batch Upgrade for IPC

Select SOP

	Edit	Device N...	Type	Channel ...	Alarm In ...	Alarm Ou...	IP Address...	Port	Select Area	Select Tra...

A list of devices found by the program will be displayed in the window. To add a device from the list they should be marked with a checkmark in the selection field of the first column to the right of the list and then clicking the OK button.

Add Encoding Device

Quickly Add

Manually Add

Initiatively Report

Device Quantity:43

Refresh

	Device Name	IP Address	ModifiyIP ...	Port	Subnet Mask	Protocol	Version	Device I...
<input type="checkbox"/>	1.4.4	192.168.3.200		6036	255.255.0.0	Standard Device	1.4.4	00:1B:9D:07:6...
<input type="checkbox"/>	5VE 6202M	192.168.122.101		9008	255.255.0.0	Standard Device	4.2.1.0	00:1B:AE:3A:3...
<input type="checkbox"/>	5DN3600C	10.11.15.203		9008	255.255.0.0	Standard Device	4.3.0.0	00:1B:9D:06:9...
<input type="checkbox"/>	edggy	10.11.11.117		9008	255.0.0.0	Standard Device	3.4.2	00:1B:9D:55:5...
<input type="checkbox"/>	NOVUS IP CAMERA	192.168.1.40		9008	255.255.0.0	Standard Device	4.1.3.0	00:1B:9D:05:E...
<input type="checkbox"/>	8DN3512	10.11.15.204		9008	255.255.255.0	Standard Device	4.1.3.0	00:1B:9D:05:B...
<input type="checkbox"/>	5VE6402	10.11.15.196		9008	255.255.255.0	Standard Device	4.3.0.0	00:1B:9D:06:B...
<input type="checkbox"/>	NOMERA	10.11.23.220		9008	255.255.0.0	Standard Device	4.2.1.0	00:1B:9D:07:0...

Select Transfer Server

Transfer Server

Select Storage Server

Storage Server

Select Area

default area

Create Area

☐ Automatically Link Area

Default password

OK

Cancel

If the device has been correctly added, the device data will be displayed in black. A gray color in the data line and a status other than Online in the Online Status column means that the device has failed to connect.

Add Encoding Device

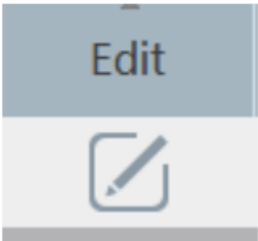
Quickly Add

Manually Add

Initiatively Report

IP Address/IP Range/Domain Name/URL	Protocol	Port	User Name	Password	Test	Delete
<div>IP Address</div> <div>0 . 0 . 0 . 0</div>	Standard Device	6036	root		

To edit device parameters, click on the field in the Edit column.



In the opened window, you can edit connection parameters such as Port, Username, Password and IP Address. After making changes, press the OK button to save the parameters.

Change Encoding Device

Initiatively Report

Device Number

Select Area

default area

Select Transfer Server

Transfer Server

Select Storage Server

Storage Server

Device Address

IP Address

10.11.15.144

Protocol

Standard Device

Port

6036

User Name

root

Password

.....

SOP

OK

Cancel

Change the device's IP address

The device's IP address can be changed in the device search window before adding. Click on the ModifyIP Address field.

Add Encoding Device

Quickly Add

Manually Add

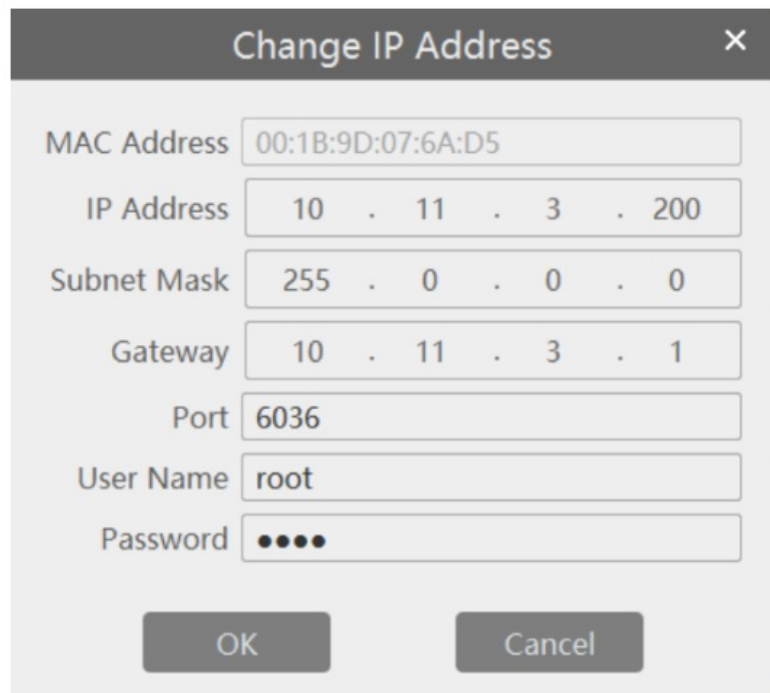
Initiatively Report

Device Quantity:32

Refresh

	Device Name	IP Address	ModifyIP ...	Port	Subnet Mask	Protocol	Version	Device ID
	Device Name	10.11.3.200		6036	255.0.0.0	Standard Device	1.4.4	00:1B:9D:07:6A:1
	1.4.4	192.168.3.200		6036	255.255.0.0	Standard Device	1.4.4	00:1B:9D:07:6A:7

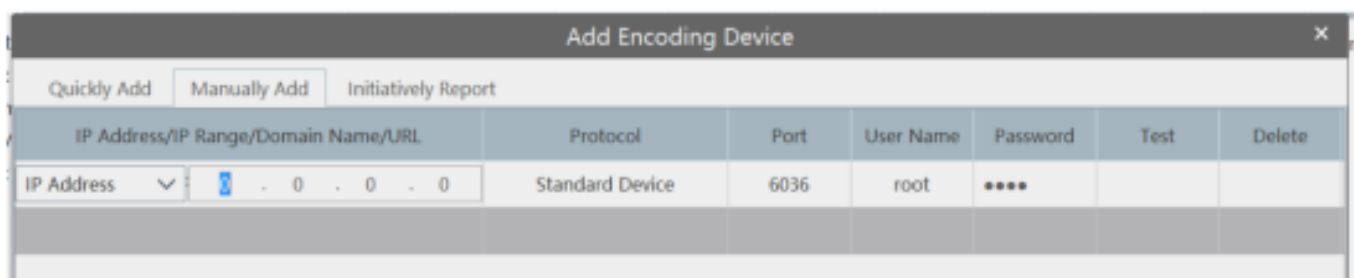
In the opened window, you can modify the following data: IP address, Mask, Gateway, Port, User name and Password. The network settings will be changed after pressing the OK button, if the credentials provided in the User name and Password fields are correct.



A dialog box titled "Change IP Address" with a close button (X) in the top right corner. It contains several input fields: "MAC Address" with the value "00:1B:9D:07:6A:D5", "IP Address" with "10 . 11 . 3 . 200", "Subnet Mask" with "255 . 0 . 0 . 0", "Gateway" with "10 . 11 . 3 . 1", "Port" with "6036", "User Name" with "root", and "Password" with four dots. At the bottom are "OK" and "Cancel" buttons.

Manually adding a device.

To add a device to the program that is not searched, e.g. outside the local network, select the Manual adding tab in the search engine.



A dialog box titled "Add Encoding Device" with a close button (X) in the top right corner. It has three tabs: "Quickly Add", "Manually Add" (which is selected), and "Initiatively Report". Below the tabs is a table with the following columns: "IP Address/IP Range/Domain Name/URL", "Protocol", "Port", "User Name", "Password", "Test", and "Delete". The first row of the table contains the following data: "IP Address" (with a dropdown arrow), "0 . 0 . 0 . 0", "Standard Device", "6036", "root", "****", and an empty "Test" cell. The "Delete" column is empty for this row.

The following address specification modes to connect to the device are available in the IP Address / IP Range / Domain Name / URL column:

IP address – The address of a single device given as decimal numbers

IP range – allows you to add more devices by specifying a range of IP addresses including the first and last addresses. Devices will be added with each available address between the ranges given.

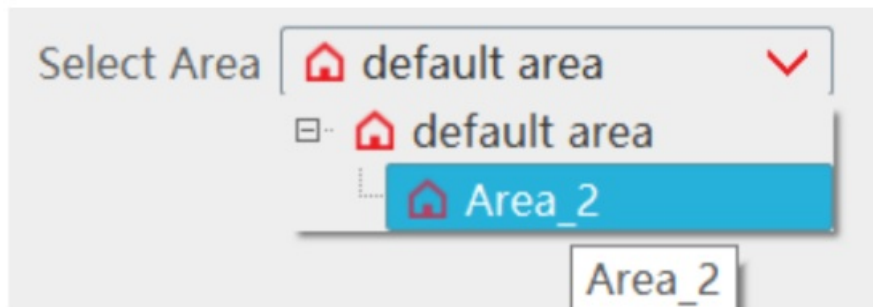
Domain name – allows you to enter an address using the domain name changed into an IP address using the DNS service

URL – Enter a URL to the RTSP streaming device.

After defining the address to connect to the device, in the Protocol field, select Standard device for the recorder or camera, and in the Ports field, enter the data port (by default 6036 for the recorder, 9008 for the camera). Enter the login details in the User name and Password fields. After clicking the Test connection button, the program will check the connection. If the test is successful, press the OK button to save the parameters.

Adding devices to the zone.

The program has a defined default zone Default area to which devices are added, unless we define other zones. To add a zone, click on the Create zone button in search device window. In the opened window, select the Parent Zone and enter the required zone name in the Zone name field. When adding a device, in the Select zone field you can select the zone to which the device is to be added.



To transfer an already existing device, select the check box on the device list and click the Select Area button.



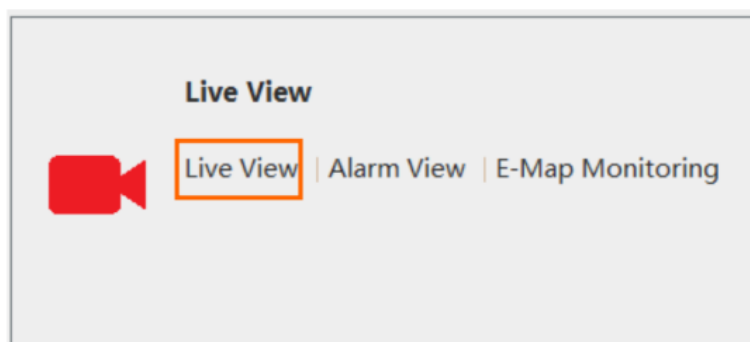
After selecting the target zone and pressing the OK button, the device will be moved to another zone.

Removing a device from the list.

To delete devices, select devices on the list and click the Delete button. In the window that opens, confirm your choice by clicking the OK button.

Displaying images from devices

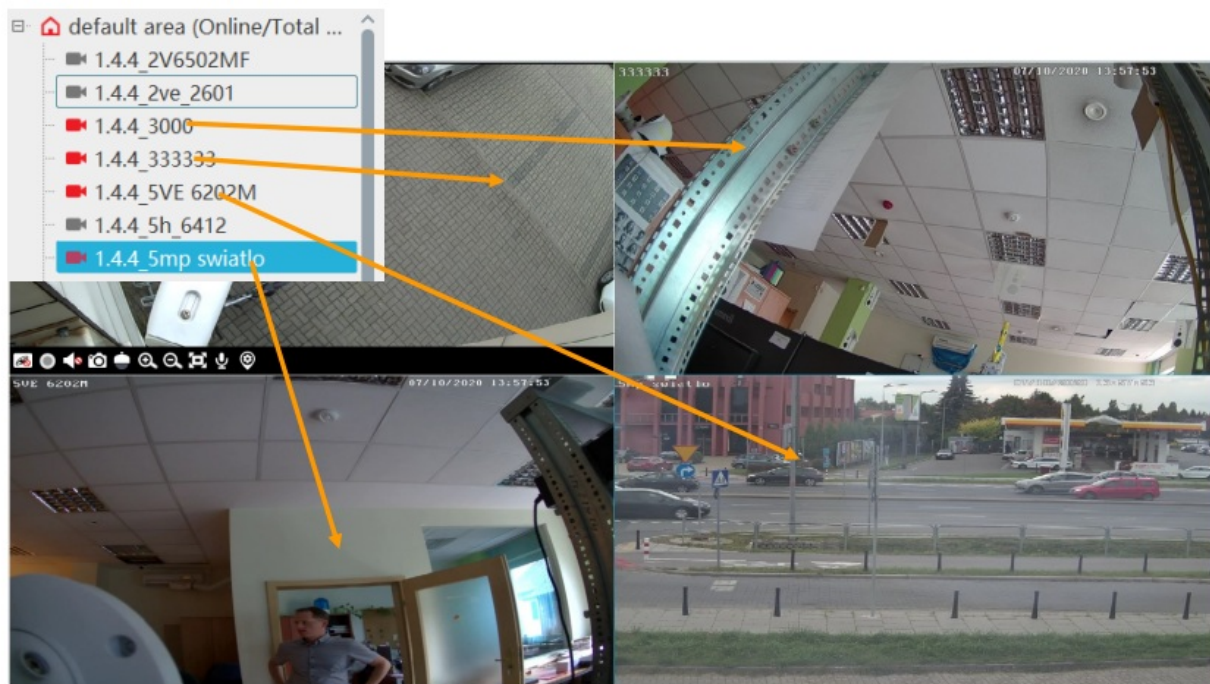
Live view



To switch to the image display, select from the bar at the top of the screen or select Live View form menu.

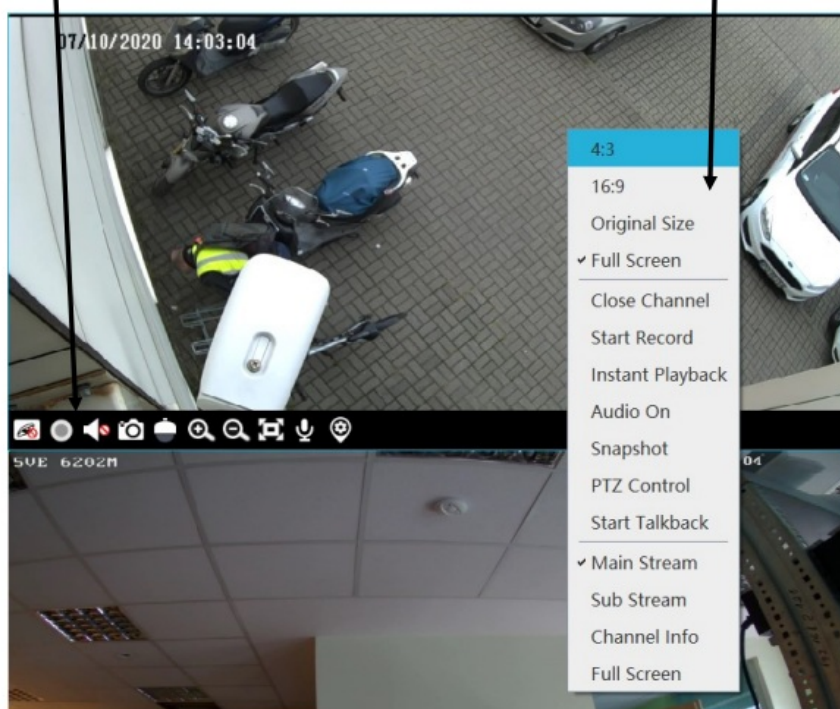


In the tab with the list of channels, expand the list of devices by clicking on the + field. From the expanded list devices, drag the selected channels while holding the left button to the display windows .



Positioning the mouse cursor at the bottom of the display window opens the display menu.

The display options are available after pressing the right mouse button on the displayed screen

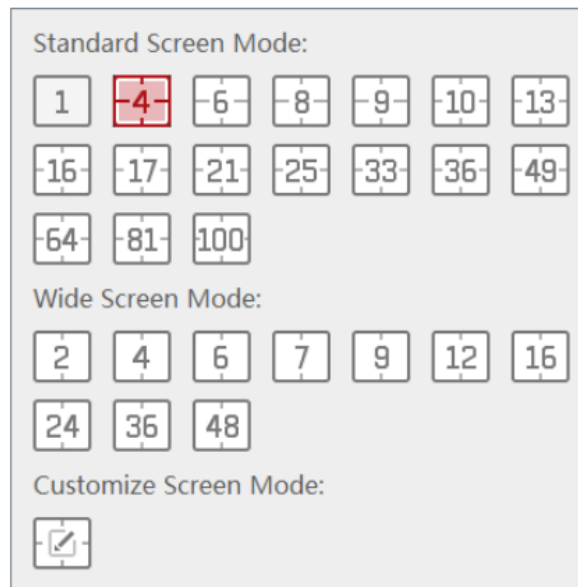


The selection of divisions is available after clicking on the icon of one of the divisions

The selection of divisions is available after clicking on the



After clicking the button for additional divisions a window with additional divisions is displayed.



Additionally, the following settings are available on the bar:



– displaying video images in full screen



– enabling / disabling OSD display in video windows



– enable audio broadcasting from selected devices



– manual activation of alarm outputs on connected devices



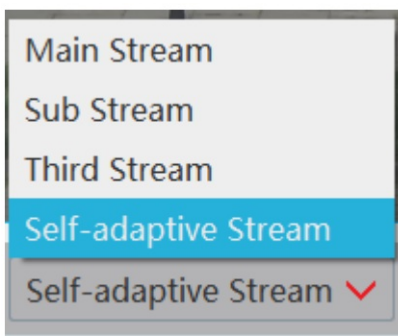
– enable / disable display of detection areas



– disable display for all cameras in the window



– saves display layout



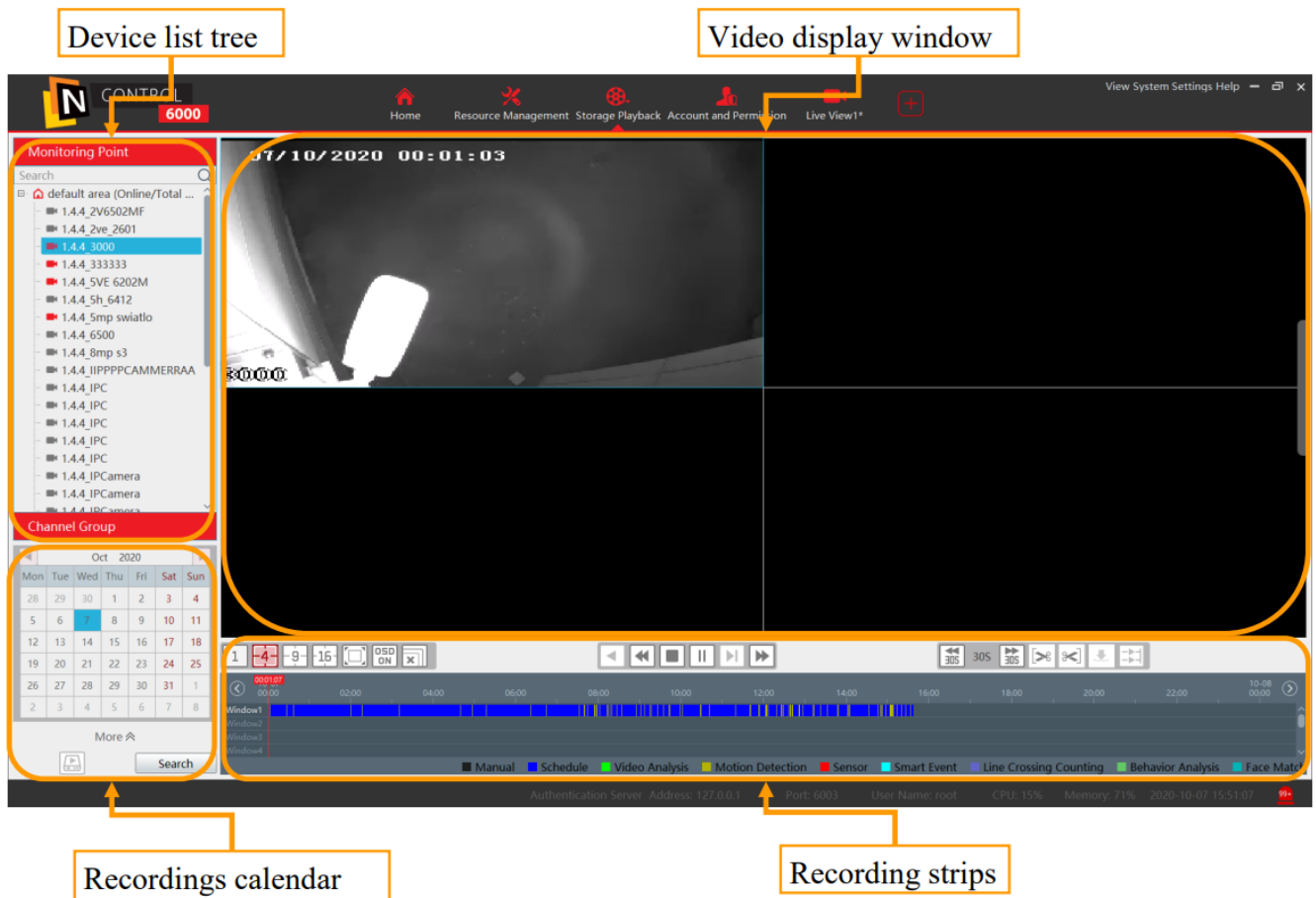
– selection allows you to manually select the type of stream displayed in the window.

Records playback

To run the recordings playback window, click on the Record playback in Storage Playback menu.



The recordings playback panel is displayed then.



In the lower left corner of the program there is an icon in which the settings mean the program has play recordings from external devices such as recorders or use the recordings saved by the program on the selected partition.



– selects recordings from external devices



– selects playback of recordings saved in the client software

To view the recordings, move the name of the selected channel from the list on the left while holding left mouse button to right video window. At the bottom of the menu, a bar is displayed specifying the length of available recordings for the selected day. To change the day of playback, select it in the calendar window. Days for which devices with recordings are marked in blue.

Oct 2020						
Mon	Tue	Wed	Thu	Fri	Sat	Sun
28	29	30	1	2	3	4
5	6	7	8	9	10	11
12	13	14	15	16	17	18
19	20	21	22	23	24	25
26	27	28	29	30	31	1
2	3	4	5	6	7	8

Clicking on the calendar opens the day and displays a bar of available recordings. Clicking on the bar starts playback at the selected point in time. The colors of the record bar indicate the type of recordings according to the descriptions at the bottom of the playback window.



In the record control bar there are buttons for selecting splits and controls displaying images in windows. The following buttons are used to control playback



– Rewind



– Slow playback



– Stop playback



– Play / Pause



–Next frame. The button is active after pausing the material



– Speed up playback



– Play 30 seconds forward or backward.



– Selection of backup start time



– Selection of backup end time



– Run a backup



– multi-channel synchronous / asynchronous reproduction switch.

Copying recordings from the playback window

It is possible to copy recordings from the material playback panel.

From the channel list on the left, drag a channel to the video display window.

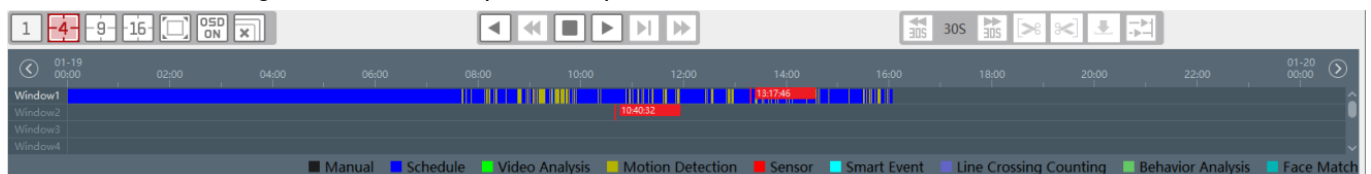


A bar showing the available scope of the recording will be displayed in the window below. To switch to recordings from the main stream, right-click on the video screen.

In the displayed window, select the Main Stream option to display and rip the main stream.

After loading the recordings bar, click on the bar at the point in time from which you want to start copying recordings and click on the button .

Then select the point in time you want the recording to end and press the button a white bar will be displayed on the time bar indicating the time of the clip to be copied.



Then select the point in time you want the recording to end and press the button .

After clicking the button, the Backup panel opens with information about the backup being made. The saving path is displayed in the Backup Path column. Clicking the Open File Position item in the Operation column opens the window in which the files are saved.

<input type="checkbox"/>	Edit	Device Name	Type	Channel ...	Alarm In ...	Alarm Ou...	IP Address/IP Ra...	Port	Select Area	Select Transfer Se...	Select Storage Se...	Online St...
<input type="checkbox"/>		6408 lpr	Standard Device	2	16	4	10.11.15.144	6036	default area	Transfer Server	Storage Server	Online
<input type="checkbox"/>		1-4-4	Standard Device	6	17	5	10.11.15.1	6036	default area	Transfer Server	Storage Server	Wrong Pas

The Start Time and End Time fields contain information about the start and end time of the recording file. The Progress column shows the percentage of the copy performed. If the field in the Progress field displays a value of 100%, it means the backup is completed.

Copying recordings to the remote device

The program enables remote backup of recordings to a USB flash drive in the recorder. The copying process can be started without the necessity to log into the recorder by a local user. To start remote copying, select Backup in the Storage Playback section.

In the menu that opens, double-click on the selected channel from the list on the left to load the bar showing the type and time of recordings. The selected time range of recordings should be marked by clicking in the selected place on the bar and holding the left mouse button, select the end of the recording and then release the mouse button. The copying process will start after clicking the Backup on Dev button. (Be sure to connect the disk recorder to the USB port.) The Progress column shows the percentage of the copying process. 100% means copying the material.

No.	Channel	Start Time	End Time	Duration	Progress	Operation	Backup Path
1	Device Name_SVE 620...	2021-01-20 11:19:33	2021-01-20 11:49:33	0:30:0	100%		Remote Equipment

After the copying process is completed, you can disconnect the USB disk from the recorder. The video data will be saved in AVI format.

2021-03-10 MB, MK
AAT SYSTEMY BEZPIECZEŃSTWA SP. Z O.O. , ul. Puławska 431, 02-801 Warszawa, Polska
tel.: 22 546 07 00, faks: 22 546 07 59

Documents / Resources

<p>User's manual</p> <p>N CONTROL 6000</p>	<p>NOVUS N Control 6000 IP Recorders [pdf] User Manual</p> <p>N Control 6000 IP Recorders</p>
--	---

References

- **N** [NOVUS Professional solution for your security systems | Video surveillance \(CCTV\), Access control](#)

Manuals+.