



# novopress AFP 101 Press Machine Instruction Manual

[Home](#) » [novopress](#) » novopress AFP 101 Press Machine Instruction Manual 

## Contents

- [1 novopress AFP 101 Press Machine](#)
- [2 Preface](#)
- [3 Basic safety information](#)
- [4 Intended use](#)
- [5 Technical Data](#)
- [6 Brief description of the press tool](#)
- [7 Start-up and operation](#)
  - [7.1 Compression](#)
- [8 Cleaning, maintenance and repair](#)
- [9 Warranty](#)
- [10 Documents / Resources](#)
- [11 Related Posts](#)

**novopress**

**novopress AFP 101 Press Machine**



**Pressgerät**  
AFP 101

Ser-nr:

1. EN 294, EN 349, EN 55014-2, EN 60745, EN ISO 12100-1, EN ISO 12100-2
2. VDE 0100, VDE0106

We hereby declare that with respect to its design and construction the machine stated below and the model thereof which we have brought into circulation conform with the applicable basic requirements on health and safety. Any use of the machine other than that for which it is intended and any modification made thereto without our consent shall render this declaration null and void.

- Applied harmonized standards, in particular:  
see Item 1 above
- Applied national standards, in particular:  
see Item 2 above

Datum / Herstellerunterschrift: 20.12.05  
Angaben zum Unterzeichner:



Geschäftsführer

## **Preface**

### **Dear customer,**

Thank you for the trust you have placed in us with the purchase of your new Novopress press tool. All equipment and tools for the press-fitting of pipe systems are developed and continuously optimised by Novopress in close co-operation with the system suppliers. Each Novopress tool is carefully tested and subjected to stringent quality control. The quality of the Novopress tools is also evidenced by the unique warranty period. Nevertheless, the service life of a tool depends, to a large extent, on you the customer. Please observe the information contained in this Operating Manual and the system supplier's processing instructions. The more caution you exercise in using your Novopress tools, the longer you will be able to use them reliably.

## **Basic safety information**

The following pictograms will be used to highlight sections of text. Please observe these instructions and act with special caution in these cases. All working safety instructions are also to be passed on to other users/ specialist technicians.

### **Warning!**

For your own safety and the protection of your press tool, please observe the text passages marked with this symbol.

**Note!**

This information is directly linked to the description of a function or an operating sequence.

Please read this Operating Manual carefully. The attached safety instructions must be observed.

**Intended use**

- The AFP 101 press tool is exclusively intended for the use of press jaws manufactured by Novopress or approved by Novopress in agreement with the system supplier. For further details, please contact the system supplier.
- The tool and the press jaws serve exclusively for the purpose of press-fitting pipes and fittings for which the relevant press jaws are intended.
- Any other or additional use is regarded as non-intended.
- Novopress is not liable for any resulting consequences or damage. Neither is it liable for press jaws of other manufacturers nor for any damage caused by such.
- Intended use also includes observance of the Operating Manual, adherence to the inspection and maintenance conditions as well as compliance with all the relevant safety regulations.

**Technical Data****AFP 101**

|   |  |
|---|--|
| Rated voltage:                          | 9.6 V =  |
| Power Consumption:                      | 240 W  |
| Rated load:                             | 19 kN  |
| Height:                                 | 80 mm with battery                                       |
| Length:                                 | 348 mm with 1.3 Ah battery<br>363 mm with 3.0 Ah battery |
| Width:                                  | 62 mm  |
| Net weight (without battery):           | 1.50 kg  |
| Max. noise level                        | 81 db(A)   |
| Noise pressure level at the user's ear: | 68 db(A)   |
| Vibration value:                        | < 2.5 m/s <sup>2</sup>                                   |
| Type of Protection:                     | IP20   |
| Temperature range during operation:     | -20°C to +60°C   |

**Rechargeable battery**

|                                     | Standard       | Optional       |
|-------------------------------------|----------------|----------------|
| Voltage:                            | 9.6 V =        | 9.6 V =        |
| Capacity:                           | 1.3 Ah NiCd    | 3.0 Ah NiMH    |
| Height:                             | 85 mm          | 100 mm         |
| Length:                             | 80 mm          | 80 mm          |
| Width:                              | 62 mm          | 62 mm          |
| Weight:                             | 0.35 kg        | 0.55 kg        |
| Temperature range during operation: | -10°C to +60°C | -10°C to +60°C |

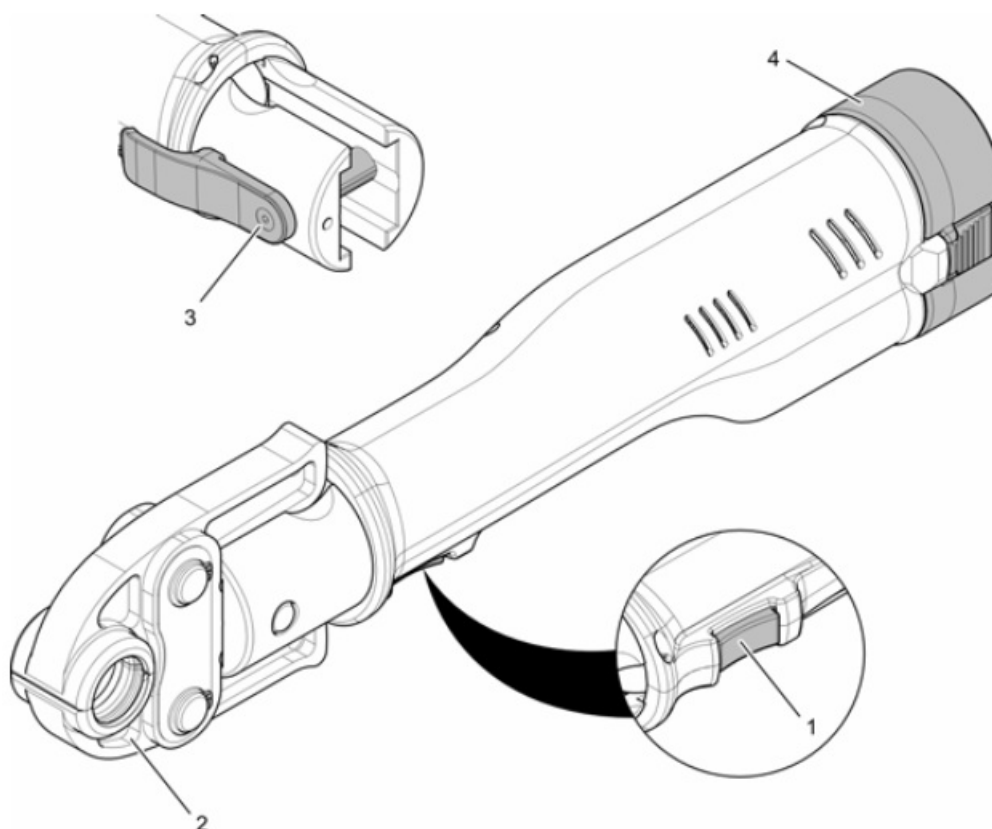
**Note:**

The batteries are not charged when delivered. Charge the batteries before using them for the first time. The rechargeable batteries only achieve full capacity after recharging 4-5 times.

**Battery charger**

For information on the function and operation of the battery charger and the rechargeable batteries, please consult the operating instructions for the battery charger provided.

**Brief description of the press tool**



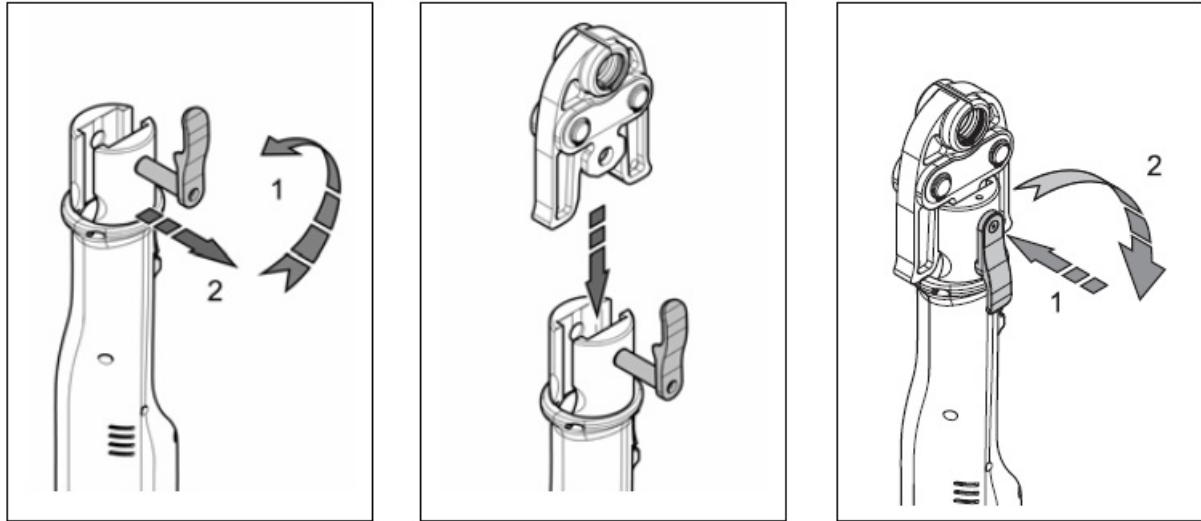
1. Start button
2. Press jaws
3. Retaining pin
4. Rechargeable battery

### Automatic press cycle

The press tool features positive control. During compression, the press tool remains in the position reached, even if the button is temporarily released. When the intended switch-off force is reached, this is perceptible by means of an increase in the motor speed and a perceptible decrease in pressure. After releasing the button, the tool returns to its initial position. For safety reasons, the positive control is only activated after a minimum force has been achieved. Until this force is achieved, the pressing process can be interrupted at any time by releasing the button. The tool then automatically returns to its initial position.

## Start-up and operation

### Preparing the AFP 101



### Warning:

Damage is caused to unit by not locking the retaining pin fully.

- Press in retaining pin to the stop and turn 180° to the rear.

### Operation at temperatures below -10°C

- Insert press jaws
- Perform a few dry runs with the AFP 101.
- The tool is ready for operation.

### Press tool and rechargeable battery

#### Notes on the rechargeable battery

### Note:

The AFP 101 press tool must only be operated with 9.6 V rechargeable batteries. The 9.6 V rechargeable battery must only be used in the appropriate press tools.

### Behaviour of press tool when batteries are almost discharged:

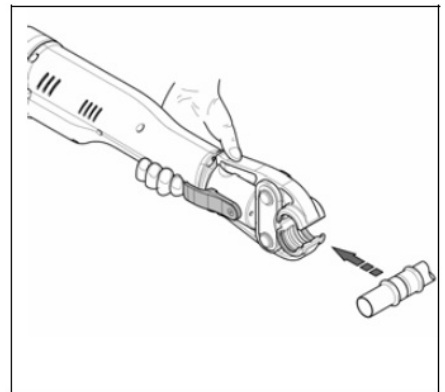
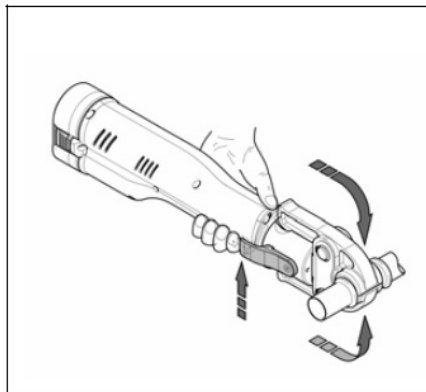
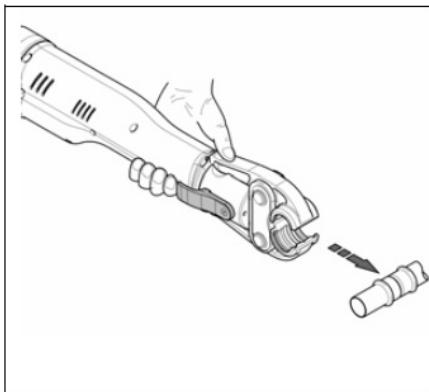
If the battery charge diminishes, the press tool requires significantly more time for the pressing cycle. The rechargeable battery should be replaced or recharged as soon as possible.

### Compression

Danger of crushing! There is a danger of crushing of the fingers and hands. Keep any body parts or foreign objects away from the press jaws when initiating the pressing cycle. Do not hold the jaw lever during the pressing cycle.

**Warning:**

Do not operate the tool without the press jaws. Keep fingers away from the danger area when no press jaws are fitted.

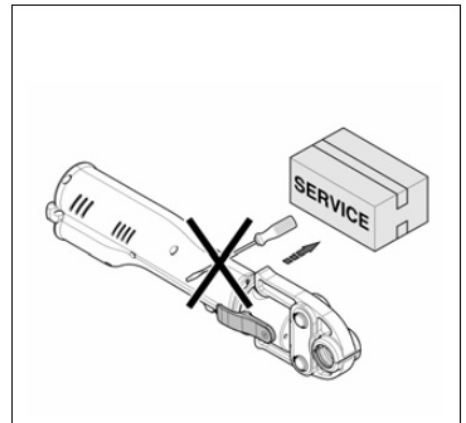
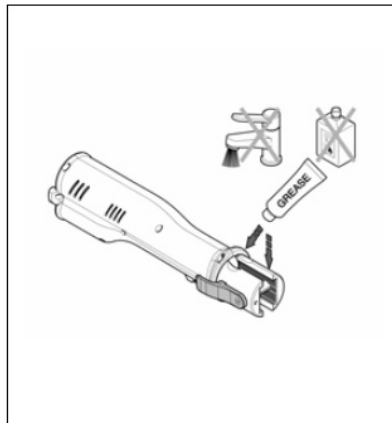
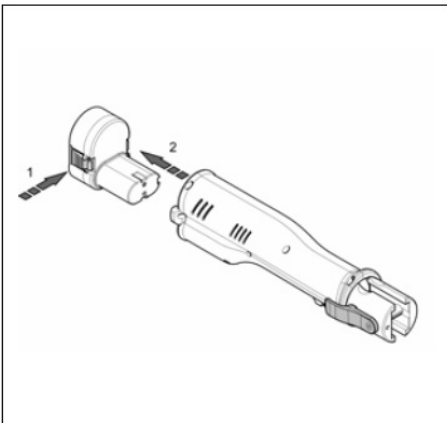


- Check whether the nominal width of the press fitting corresponds to the nominal width of the press jaws.
- Observe the system manufacturer's instructions when fitting the press jaws.
- Press and hold the button.
- When compression is complete, detach the press jaws from the press fitting.

## Cleaning, maintenance and repair

**Warning:**

Observe the safety instructions and always remove the battery before performing cleaning or maintenance work.



## Maintenance intervals

We recommend that our authorized NOVOPRESS specialist workshops be used for maintenance and repair work (see service addresses). Have the equipment repaired by a specialist only.

The next recommended maintenance is indicated by means of an inspection sticker on the press tools. This sticker, the colour of which is changed each year, indicates the date of the next maintenance (month/year). This applies to new tools and components, as well as to the individual maintenance intervals for the equipment.

- **Regularly**

Inspect the equipment for external damage and have it repaired if necessary.

- **Bi-annually**

Have the tool inspected in accordance with DIN VDE 0701-1 and DIN VDE 0702 by a qualified electrician or a Novopress workshop.

- **Annually**

- Have the press tool inspected by a Novopress workshop.

## **Disposal**

- **Warning!** Hydraulic fluids pose a hazard to groundwater. Uncontrolled draining or improper disposal are punishable by law.
- We recommend that disposal be carried out by authorised specialist companies.

## **Warranty**

Novopress grants a minimum warranty period of two years on its press tools. The warranty period always begins upon delivery of the tool and can be proven by means of the sales documentation if necessary.

### **2 year warranty for new tools**

The minimum warranty period for the AFP 101 press tool is two years. Within this period, the warranty covers the repair of any damage or malfunctions with regard to the tool which are attributable to material or production faults.

### **Not covered by the warranty are:**

- Damage caused by improper use or inadequate maintenance.
- Damage caused by the use of press jaws not approved for the relevant tool by Novopress.
- Damage caused by press-fitting unsuitable pipes or fittings.
- Wearing parts do not fall within the scope of the warranty.
- All warranty claims expire 2 years after the date of purchase and 2 ½ years after delivery by Novopress.
- Services or parts provided under warranty are free of charge. However, the user bears all shipping costs.
- Claims can only be recognised if the tool is delivered to Novopress or a Novopress workshop unopened.

Repair or replacement of the tool under warranty does not result in an extension of the warranty period. Repair or replacement can only be performed using as-new components, the function of which corresponds to that of the old components. Each defective and therefore replaced component is the property of the manufacturer.

### **3 year warranty for new tools**

The warranty period for the AFP 101 press tool is extended by 1 year, if it is sent at least every 12 months to Novopress or to an authorised Novopress workshop for maintenance. This maintenance is subject to a charge. For details of costs, please contact Novopress or an authorized Novopress workshop.

After the expiry of the warranty period, Novopress provides the following warranty in the case of a repair:

- ## Scharnhorststrabe 1

- ## Documents / Resources

