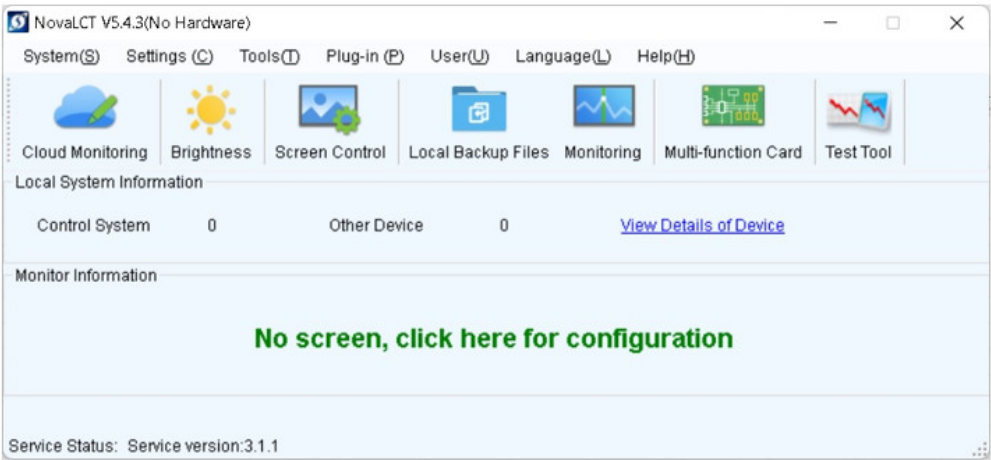


NOVASTAR Test Tool Software User Guide

[Home](#) » [NOVASTAR](#) » NOVASTAR Test Tool Software User Guide 



User Guide



Test Tool

Contents

1 Test Tool Software

2 Software Introduction

3 Test Patterns

4 Software Settings

5 Documents / Resources

5.1 References

Test Tool Software



Software Introduction

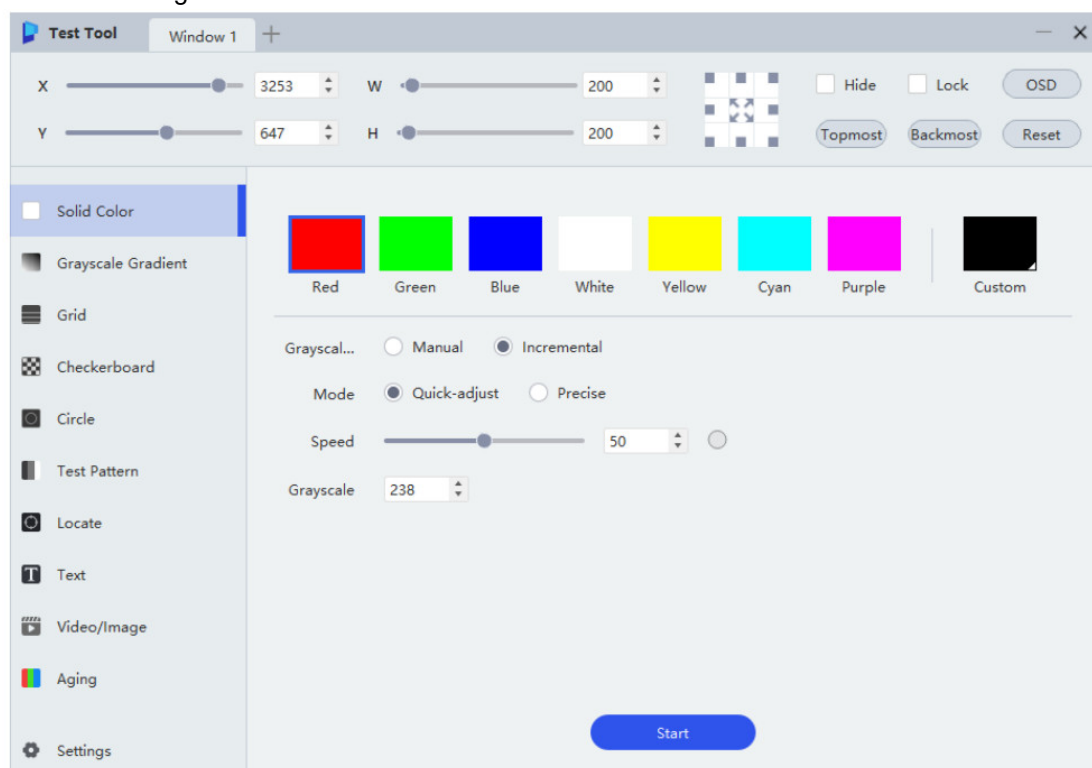
The Test Tool offers a wide range of test patterns to facilitate screen testing, including assessments of display effects, aging, problem identification, and more.

Test Patterns


2.1 Set Test Window

Open the Test Tool and perform the corresponding operations to complete the window settings.


Figure 2-1 Window settings



- Add window


Click  on the right side of the window tab to add a new window. The window name cannot be changed.

- Delete window

Click  on the right to the window name to delete the window. Window 1 is the default window and cannot be deleted.

- Adjust window position
 - Adjust the values of X and Y to adjust the window coordinates.
 - Drag the window directly to the desired position.
 - Click on the grid with the square in the image below to adjust the window to the corresponding position on the screen.



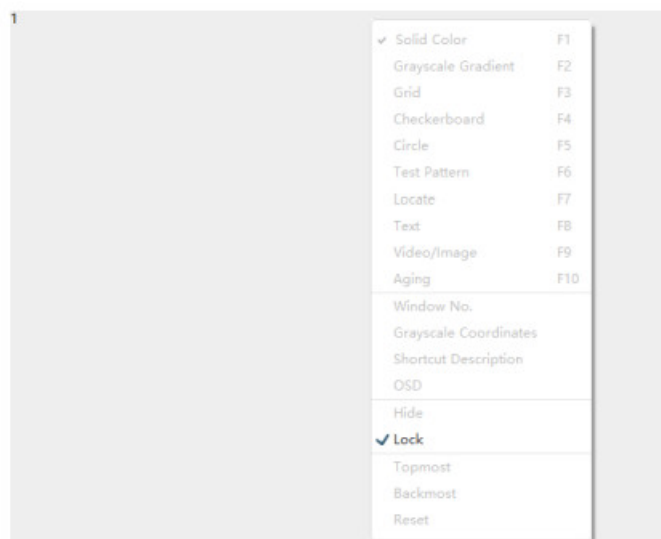
- Adjust window size
 - Adjust the values of W and H to adjust the width and height of the window.
 - Adjust the window size directly by dragging its edges.
 - Double-click the window to enter/exit full-screen.
 - Click  in the center of the image below to maximize the current window.

- Hide/Show window

To hide the current window, select the Hide option. To display the window, simply deselect the Hide option.

- Lock/Unlock window

To prevent modifications to the current window, select the Lock option. To unlock, right-click the window and deselect Lock from the popup menu.



- Topmost/Backmost

Click Topmost to bring the current window to the front; click Backmost to send the current window to the back.
- On Screen Display

Click OSD to open a pop-up dialog box where you can set the on screen display content and its properties.
- Reset

Click Reset to restore the position and size of the current window to the default values.

2.2 Set Test Pattern

The Test Tool offers a wide range of test patterns. Please configure the settings to suit your needs.

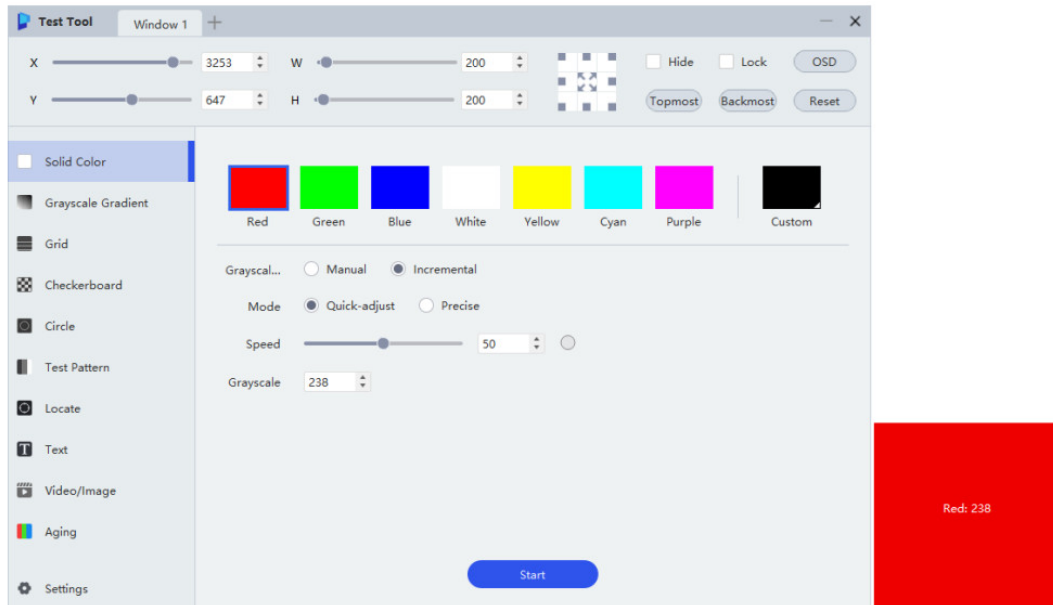
Solid Color

Set the color (customizable) and grayscale adjustment method to test the accuracy of the displayed color on the screen.

Grayscale adjustment method:

- Manual: Drag the slider to adjust the grayscale manually.
- Incremental: Set the grayscale increment method and transition interval. Click Start to enable automatic changes.

Figure 2-2 Solid color settings and the corresponding pattern



Grayscale Gradient

Set the properties of the pattern, including screen color, gradient stretch, stripe height, levels, gradient direction, moving direction and speed to test the uniformity of grayscale gradient on the screen.


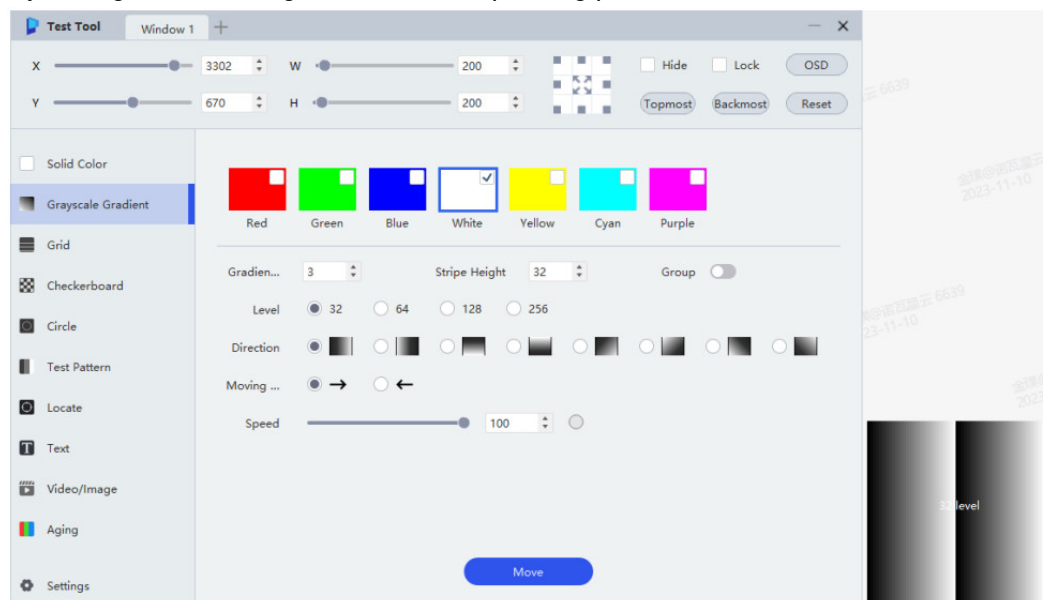
Toggle on Group to , where you can select the desired number of levels to group and the layout of the screen.

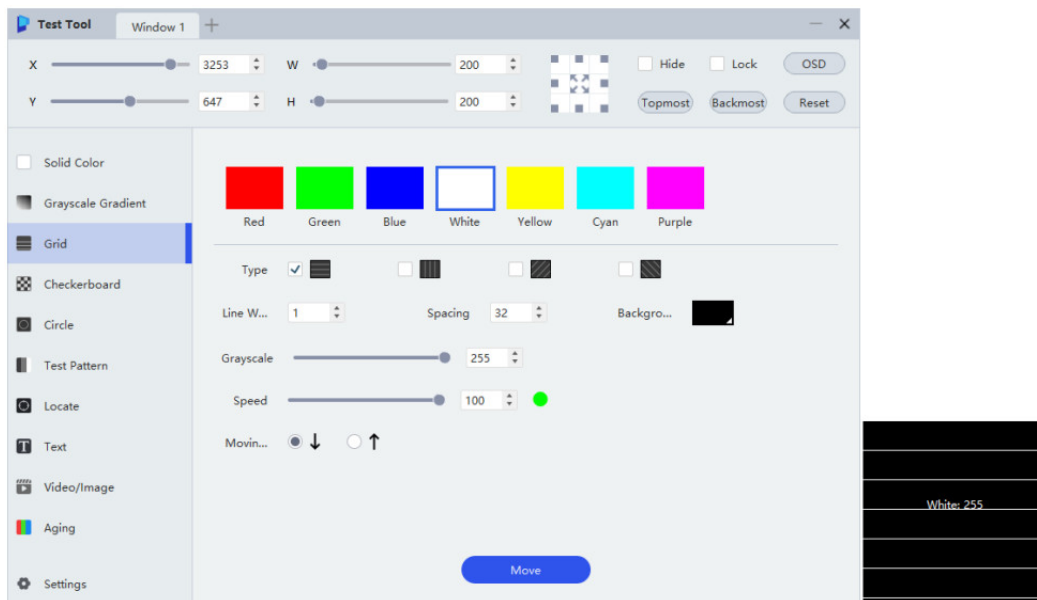
Figure 2-3 Grayscale gradient settings and the corresponding pattern



Grid

Set the color, type, line width, spacing, background color, grayscale, speed, and moving direction of the grid lines to test the display effects at different angles on the screen and perform a simple test for dead pixels.

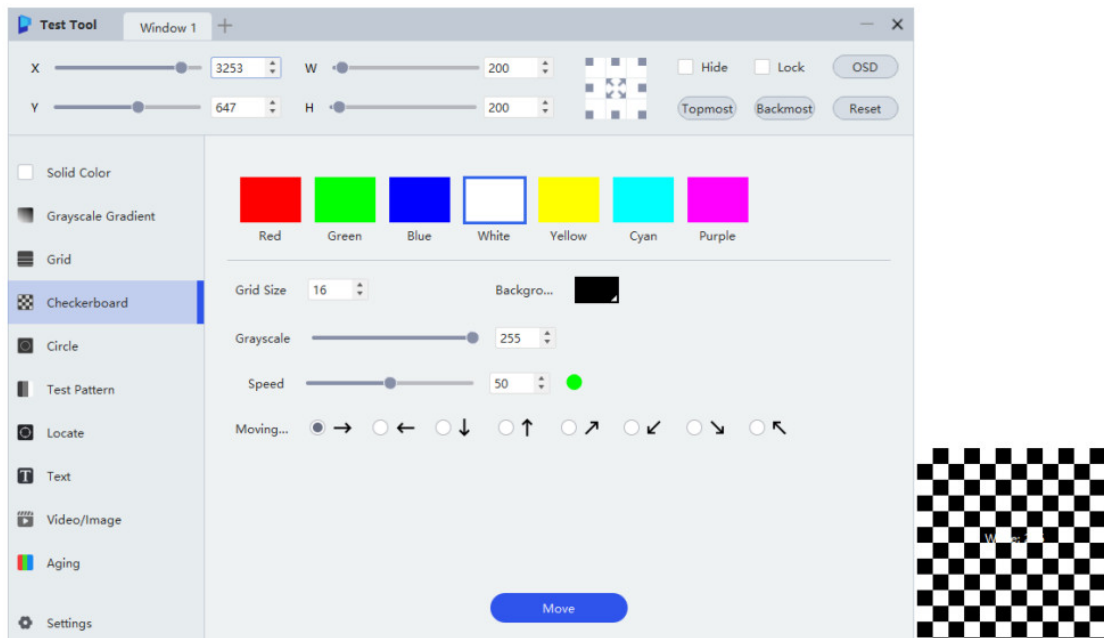
Figure 2-4 Grid settings and the corresponding pattern



Checkerboard

Set the grid color, grid size, background color, grayscale, moving direction, and moving speed to examine the level of display screen coupling.

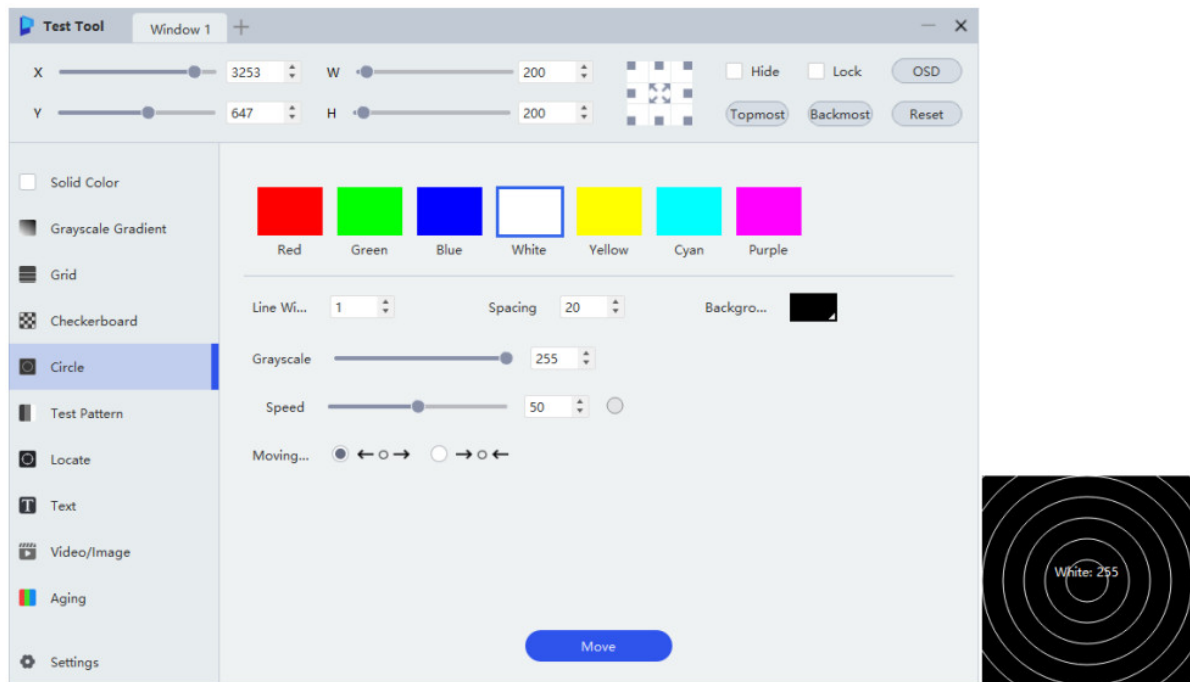
Figure 2-5 Checkerboard settings and the corresponding pattern



Circle

Set the color, line width, spacing, background color, grayscale, moving direction, and moving speed to examine the ghosting level of the screen.

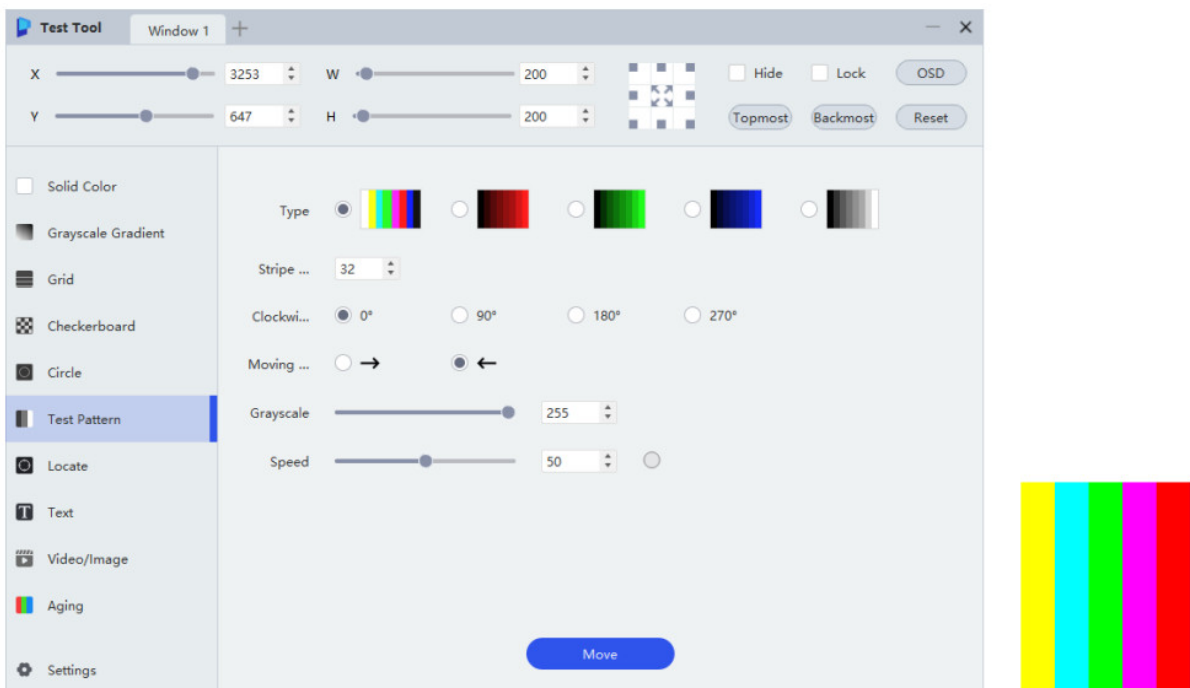
Figure 2-6 Circle settings and the corresponding pattern



Test Pattern

Set the pattern type, stripe width, rotation angle, moving direction, grayscale, and speed to test the display effect on the screen and camera shooting results.

Figure 2-7 Test pattern settings and the corresponding pattern

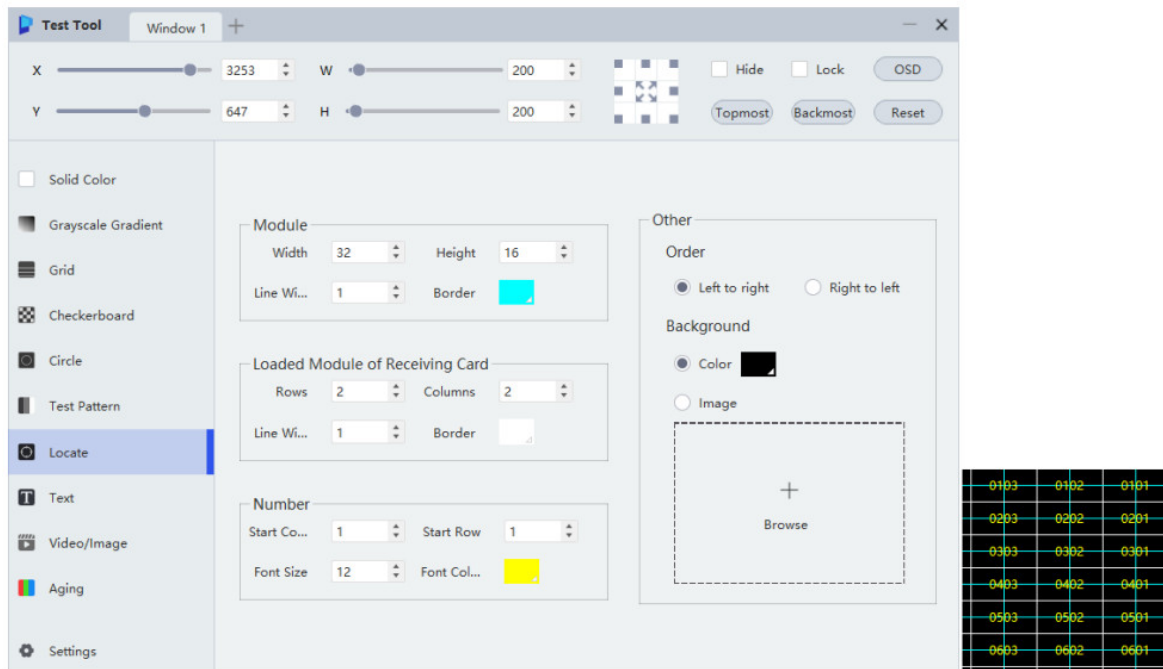


Locate

Set up a test pattern that corresponds to the actual positions of the cabinets and the modules. The pattern includes cabinet numbers, cabinet borders, and module borders to examine the accuracy of data group.

- Module: Set the width and height of the modules, and the width and color of the module lines.
- Loaded Module of Receiving Card: Set the number of rows and columns of the cabinet and the width and color of the lines.
- Number: Set the start row and start column of the cabinet number, the font size and font color.
- Other: Set the order of the cabinet number and background.

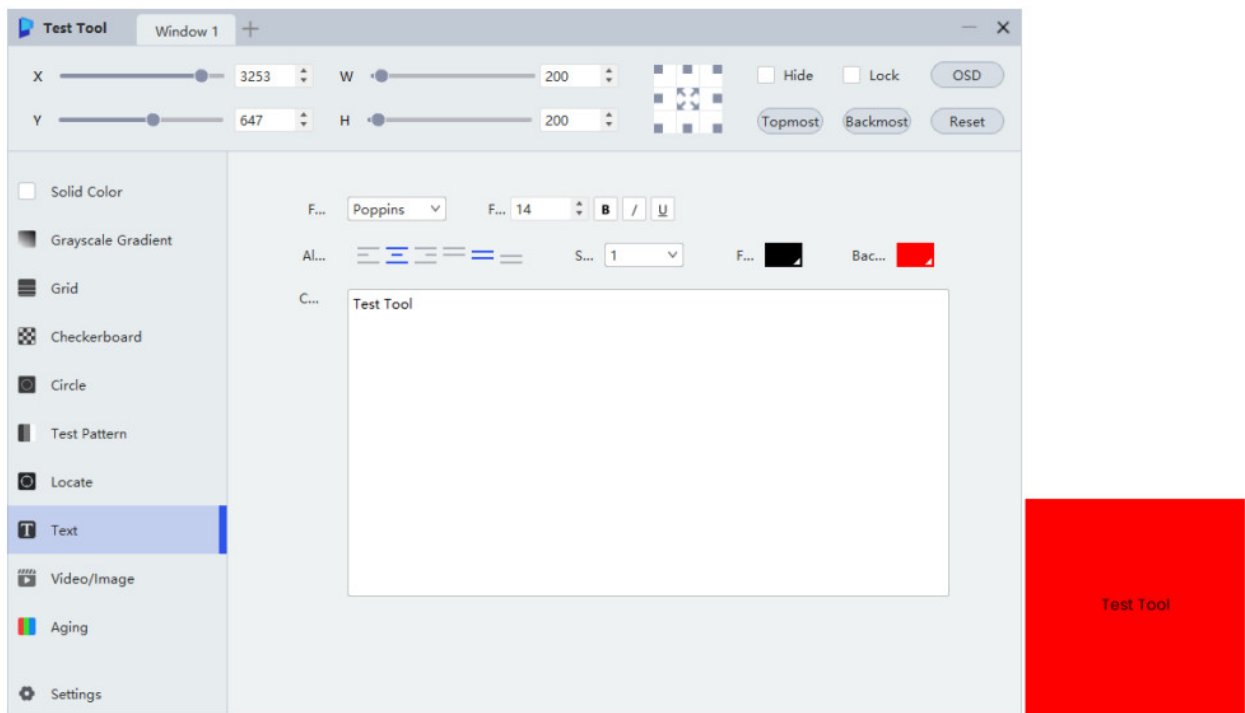
Figure 2-8 Locate settings and the corresponding pattern



Text

Set the font name, font size, bold, italic, underline, alignment, spacing, text color, background color, and content of the text.

Figure 2-9 Text settings and the corresponding pattern



Video/Image

Configure the playlist and adjust the playback settings for videos and images to conduct video aging tests or assess display effects.



Note

- 4K to 8K videos can only be played in one window at a time, and cannot be played in multiple windows simultaneously.
- The smoothness of video playback is related to the hardware performance of the computer.
- The video playback function is exclusively intended for screen testing and cannot be used for commercial or professional video playback.

You can perform the following operations as required:










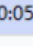

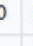
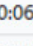
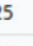
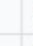
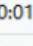
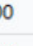
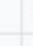
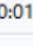
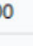
- Add video/image: Click Add and select a video or image in the pop-up dialog box, then click Open to add it to the playlist.
- Set loop: Select Repeat List or Repeat One from the drop-down menu. This will allow you to loop the video or image either by the playlist as a whole or by a single item.
- Adjust file index: Click  or  to adjust the file index in the list.
- Remove file: Click  to remove the file from the list.
- Set playback parameters: Specify the image's display mode and duration, as well as the video's display mode, playback progress, and pause/play functionality.
- Play a file: Click the target file to initiate playback. The currently playing file will be indicated by the  displayed next to its filename.
- Pause playback: During video playback, click  on the right side of playback progress to pause and the  icon will be displayed on the right side of the video name.
- Resume playback: Click  on the right side of the playback progress to resume.

Figure 2-10 Video/Image settings

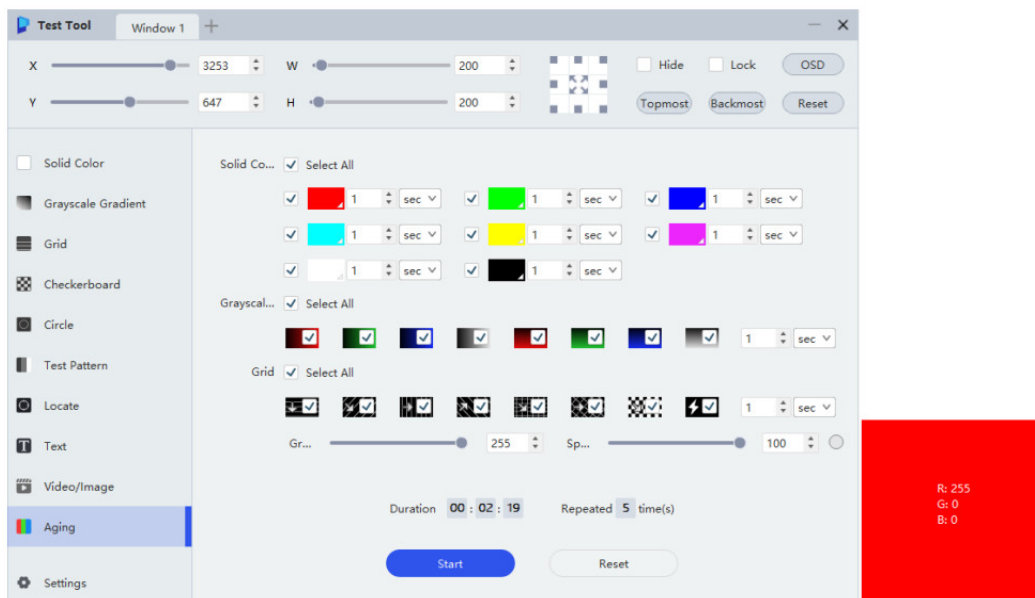
Loop: Repeat List		Add			
No.	Content	Original ...	Playbac...	Path	Operation
1	Video 1.mp4 	1920*1080	00:05:06	C:/Users/Nova005839/Desktop	  
2	Video 2.mp4	1920*1080	00:06:25	C:/Users/Nova005839/Desktop	  
3	Image 1.png	589*428	00:01:00	C:/Users/Nova005839/Desktop	  
4	Image 2.png	169*169	00:01:00	C:/Users/Nova005839/Desktop	  
5					
6					
7					
8					
9					
10					

Aging

Set the color and duration for solid color patterns, the type and transition interval for grayscale gradient patterns, and the type, transition interval, grayscale, and speed for grid patterns. This feature is designed for conducting aging tests on LEDs through continuous playback and for aging tests on the power supply unit of the cabinet using black and white flickering patterns that induce current pulses.

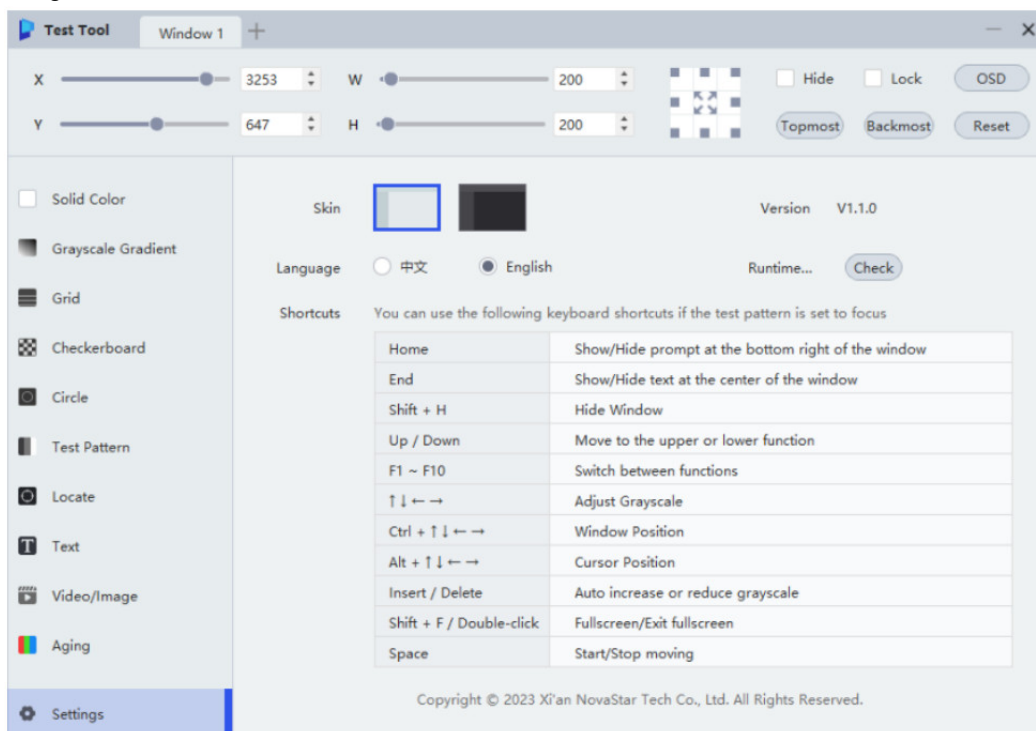
The aging test duration and pattern repeat times will be displayed on the software interface. To reset, simply click Reset.

Figure 2-11 Aging settings and the corresponding pattern



Software Settings

Click Settings located in the lower-left corner of the interface and then customize the options for the Test Tool.
Figure 3-1 Settings



- Change skin
To change the visual appearance, simply click on a skin theme of your preference.
- Change language
For language selection, choose either 中文 or English to switch to the corresponding language.
- Check runtime environment
To view pertinent information about the software's operating environment, such as the operating system, local IP, and DirectX version, click Check to open a dialog box with the details.
- View shortcut keys
View the instructions for keyboard shortcut keys.
- View copyright information

View the copyright information of the software.

Copyright © 2023 Xi'an NovaStar Tech Co., Ltd. All Rights Reserved.
No part of this document may be copied, reproduced, extracted or transmitted in any form or by any means without the prior written consent of Xi'an NovaStar Tech Co., Ltd.

Trademark

NOVA)STAR is a trademark of Xi'an NovaStar Tech Co., Ltd.

Statement

Thank you for choosing NovaStar's product. This document is intended to help you understand and use the product. For accuracy and reliability, NovaStar may make improvements and/or changes to this document at any time and without notice. If you experience any problems in use or have any suggestions, please contact us via the contact information given in this document. We will do our best to solve any issues, as well as evaluate and implement any suggestions.

Official website
www.novastar.tech
Technical support
support@novastar.tech

Documents / Resources

	<p>NOVASTAR Test Tool Software [pdf] User Guide Test Tool Software, Tool Software, Software</p>
---	---

References

- [User Manual](#)