



# Nova LCT Windows PC Screen Configuration User Guide

[Home](#) » [nova](#) » Nova LCT Windows PC Screen Configuration User Guide 

## Contents

- [1 Nova LCT Windows PC Screen Configuration](#)
- [2 Product Information](#)
- [3 Product Usage Instructions](#)
- [4 WIRING AND CONNECTIONS](#)
- [5 SOFTWARE DOWNLOAD AND INSTALLATION](#)
- [6 LED SCREEN CONFIGURATION](#)
- [7 RECEIVING CARD CONFIGURATION](#)
- [8 SCREEN CONNECTION](#)
- [9 Documents / Resources](#)
  - [9.1 References](#)



## Nova LCT Windows PC Screen Configuration



## Product Information

- Product Name: Windows PC Screen Configuration Manual with Nova LCT
- Supported Screens: Screens assembled with cabinets in the horizontal position
- Language: English

## Product Usage Instructions

### Wiring and Connections:

#### Step 1:

- **Wiring and Connections** There are 2 ways to connect your LED display with the content player and your PC. Choose one of the following connection methods (A or B). 1.A
- **Network Connection with Ethernet Cables (Recommended)**
- Connect a standard network cable straight from the LED out port of the controller to the first LED display frame.
- Ensure there is no router or switch between the player and the screen.
- Connect a standard network cable from your PC to your router.
- Connect a standard network cable from your router to the Ethernet port of the content player. 1. B
- **Wi-Fi Access Point Connection**
- Connect a standard network cable straight from the LED out port of the controller to the first LED display frame.
- Ensure there is no router or switch between the player and the screen.
- Check the side sticker on the content player for the Wi-Fi access point name and password.
- Connect your PC to the content player's Wi-Fi access point by following these steps:
  1. Click on the wireless networks icon in the lower right corner of your PC's desktop.
  2. Select the button to manage Wi-Fi connections.
  3. A list of Wi-Fi networks detected by your PC will be displayed.
  4. Look for the network called PAX (the exact name is on the sticker on the side of the content player) and click on "Connect."
  5. Type the Wi-Fi password (12345678 by default) and click "Next."
  6. Now you are directly connected to the content player of your LED display.

### Software Download and Install

#### Step 2:

- **Software Download and Installation 2.1 Download and Install NovaLCT** – Visit NovaStar's website (<https://www.novastar.tech>) and go to the Downloads section.
- Download the latest version of NovaLCT from the Software tab in the Download section.
- Install NovaLCT following all default instructions.
- The installation of NovaLCT may trigger additional software and driver installations for the correct detection of the LED display. Allow every step.

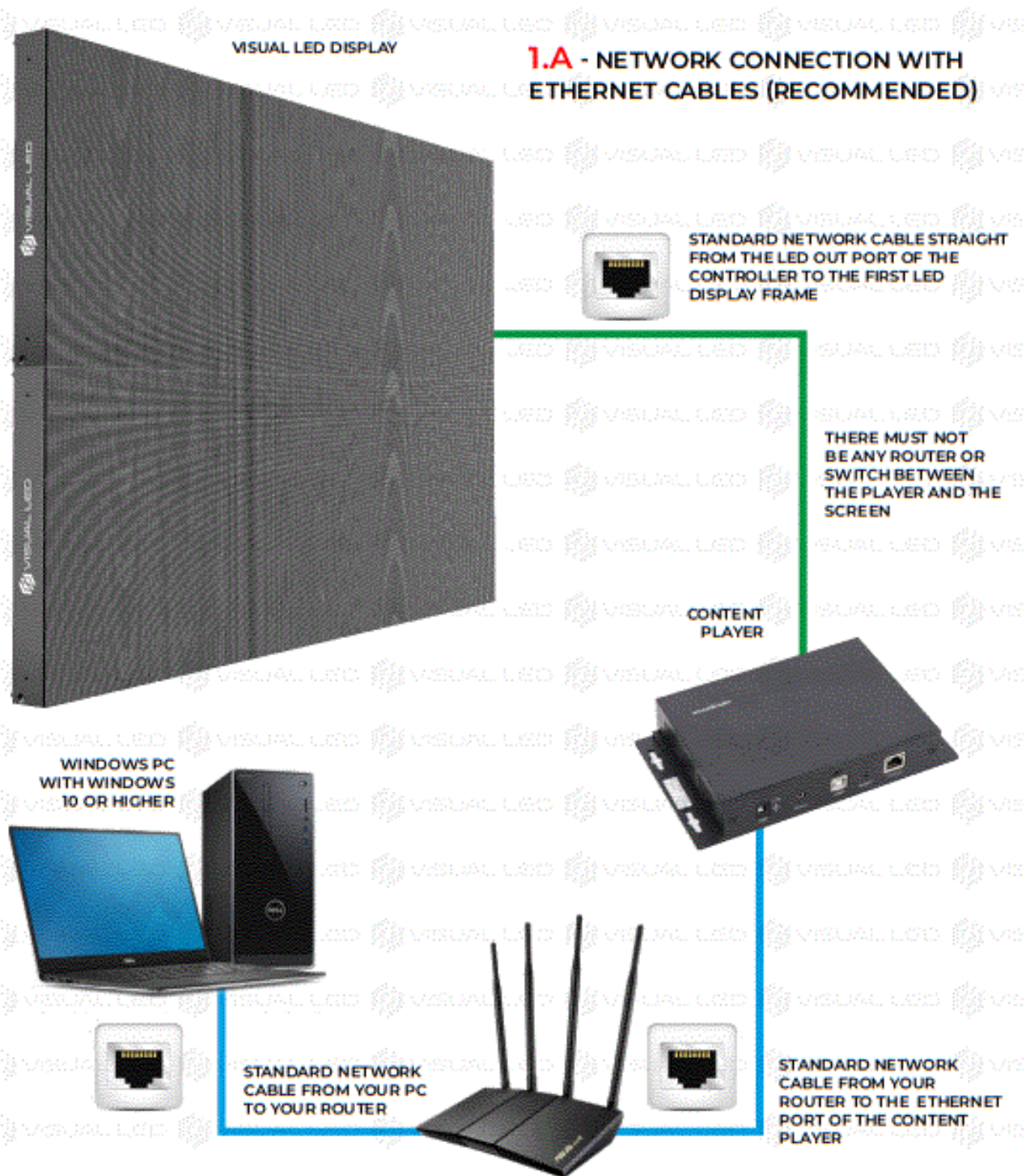
### LED Screen Configuration:

#### Step 3:

- Log in to the Content Player from NovaLCT
- Launch NovaLCT software on your PC.
- Login to the content player using the provided credentials or follow the instructions given in the manual. Please refer to the complete user manual for further configuration steps and detailed instructions.

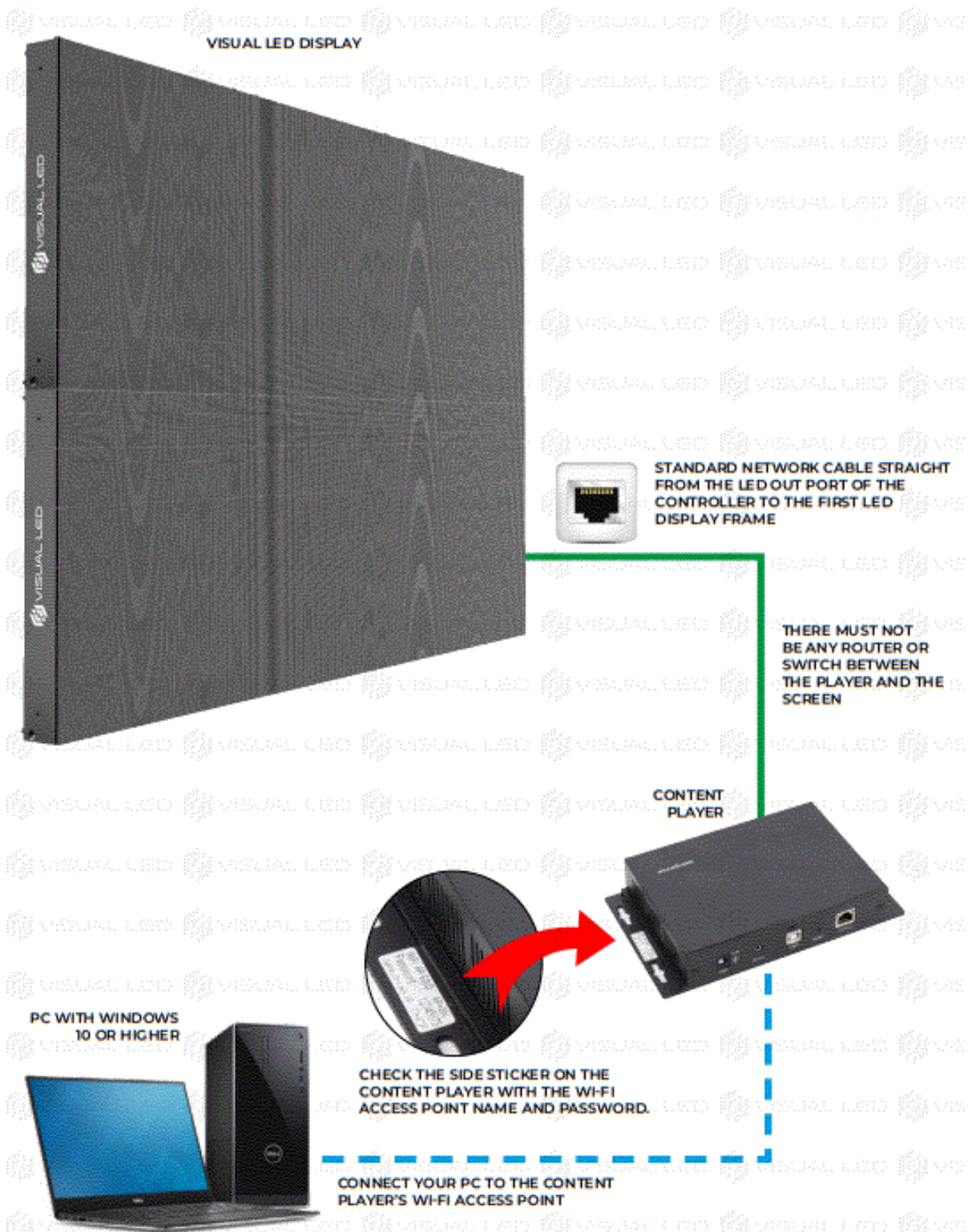
## WIRING AND CONNECTIONS

THERE ARE 2 WAYS TO CONNECT YOUR LED DISPLAY WITH THE CONTENT PLAYER AND YOUR PC. CHOOSE ONE OF THE FOLLOWING CONNECTION METHODS (A OR B).

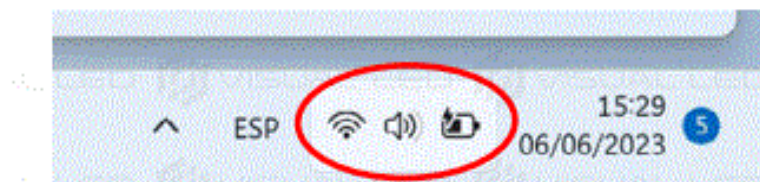


## B – WI-FI ACCESS POINT CONNECTION

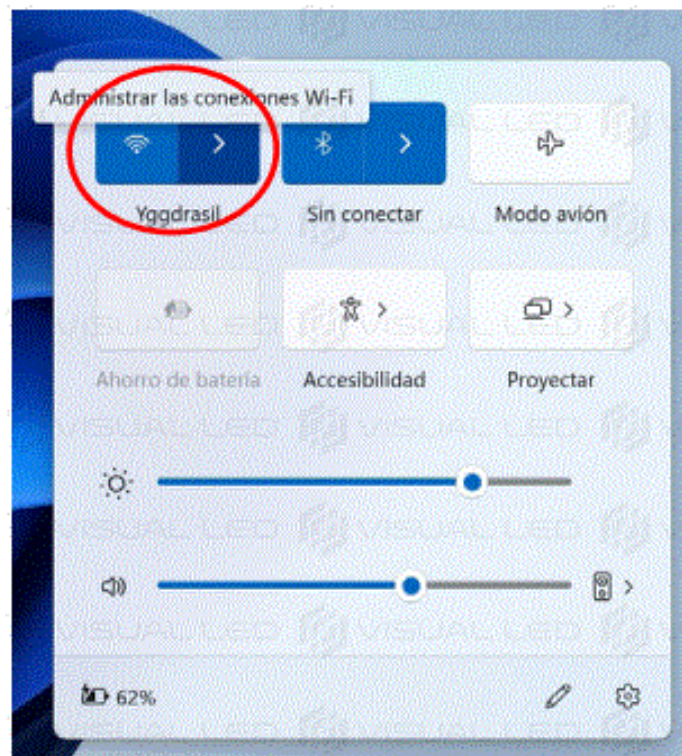




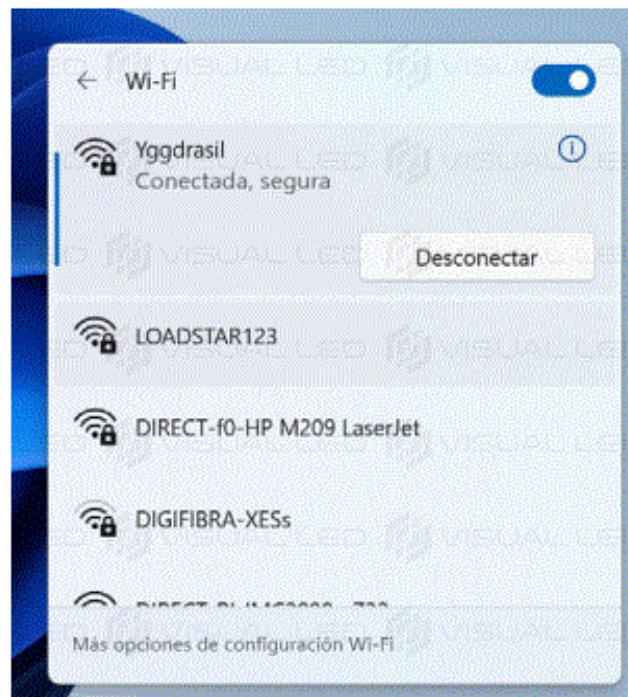
1. CLICK ON THE WIRELESS NETWORKS ICON IN THE LOWER RIGHT CORNER OF YOUR PC'S DESKTOP.



2. SELECT THE BUTTON TO MANAGE WIFI CONNECTIONS

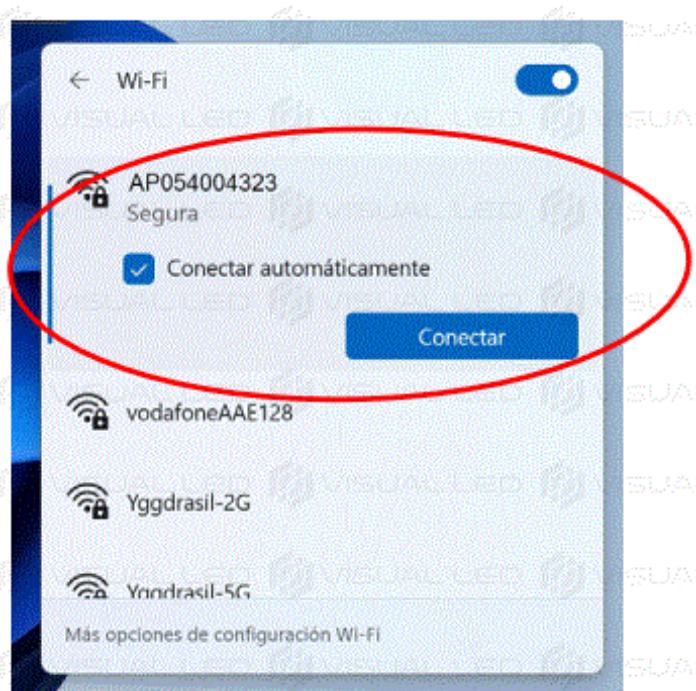


3. A LIST OF WI-FI NETWORKS DETECTED BY YOUR PC WILL BE DISPLAYED.



4. CHECK FOR THE NETWORK CALLED APXXXXXXXXX (THE EXACT NAME IS ON THE STICKER ON THE SIDE OF THE CONTENT PLAYER) AND CLICK ON "CONNECT"





5. TYPE THE WI-FI PASSWORD (12345678 BY DEFAULT) AND CLICK “NEXT”.



6. NOW YOU ARE DIRECTLY CONNECTED TO THE CONTENT PLAYER OF YOUR LED DISPLAY

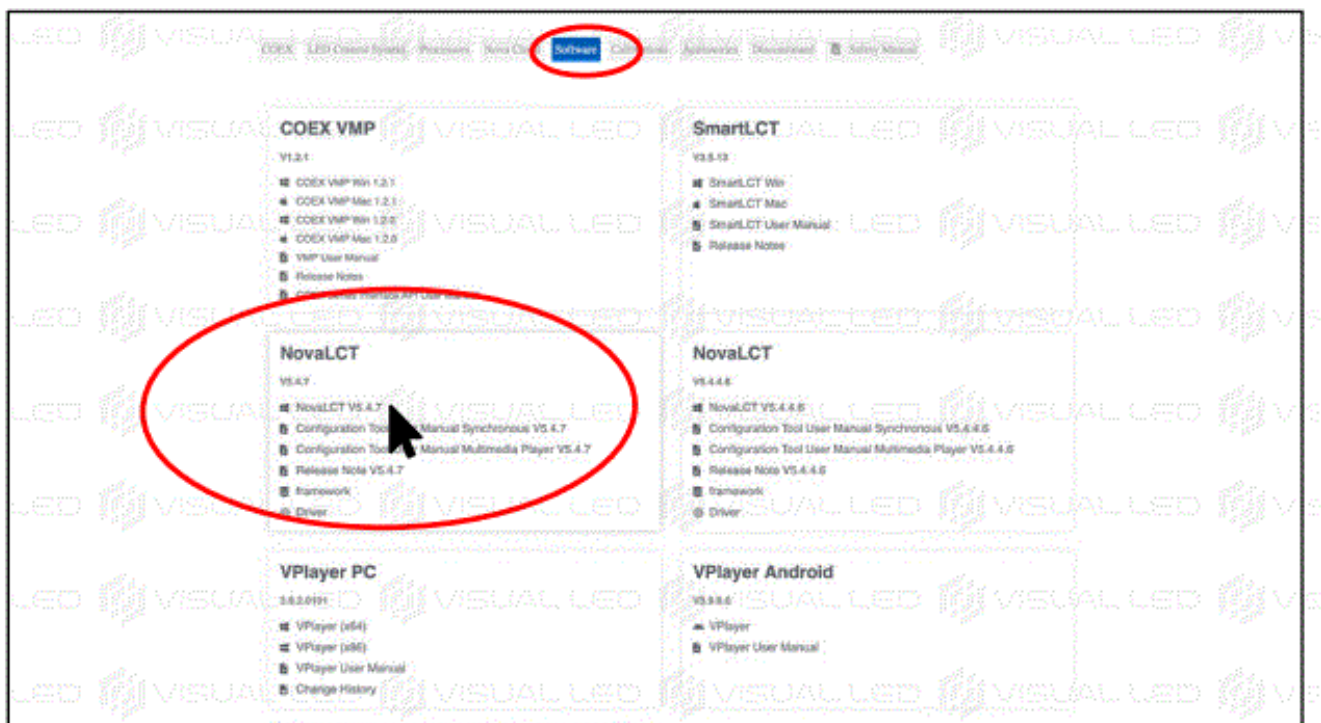
## SOFTWARE DOWNLOAD AND INSTALLATION

### DOWNLOAD AND INSTALL NOVALCT

- VISIT NOVASTAR’S WEBSITE ([HTTPS://WWW.NOVASTAR.TECH](https://www.novastar.tech)) AND GET TO THE DOWNLOADS SECTION



- DOWNLOAD THE LATEST VERSION OF NOVALCT FROM THE “SOFTWARE” TAB IN THE DOWNLOAD SECTION.



## WARNING

INSTALL NOVALCT FOLLOWING ALL DEFAULT INSTRUCTIONS.

THE INSTALLATION OF NOVALCT MAY TRIGGER ADDITIONAL SOFTWARE AND DRIVERS INSTALLATIONS FOR THE CORRECT DETECTION OF THE LED DISPLAY. ALLOW EVERY STEP.

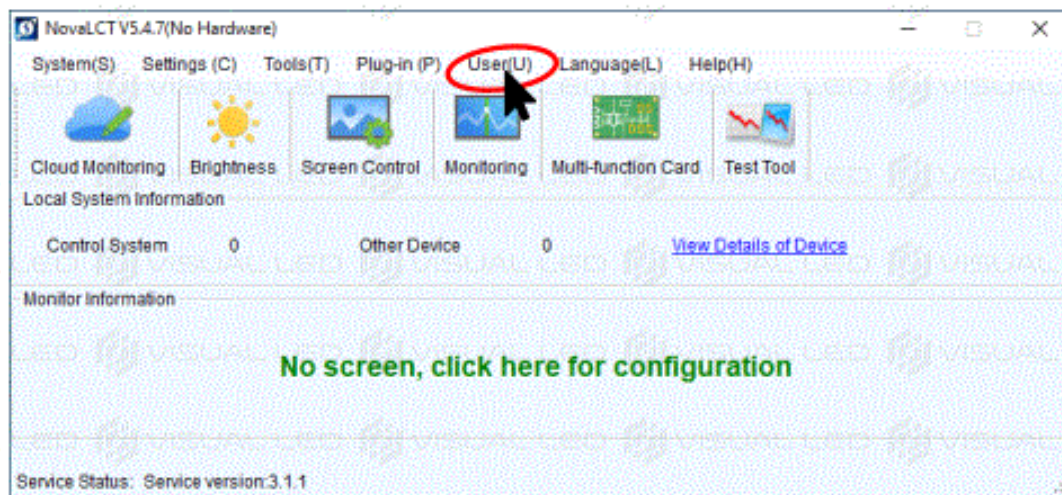
## LED SCREEN CONFIGURATION

### LOGIN TO THE CONTENT PLAYER FROM NOVALCT

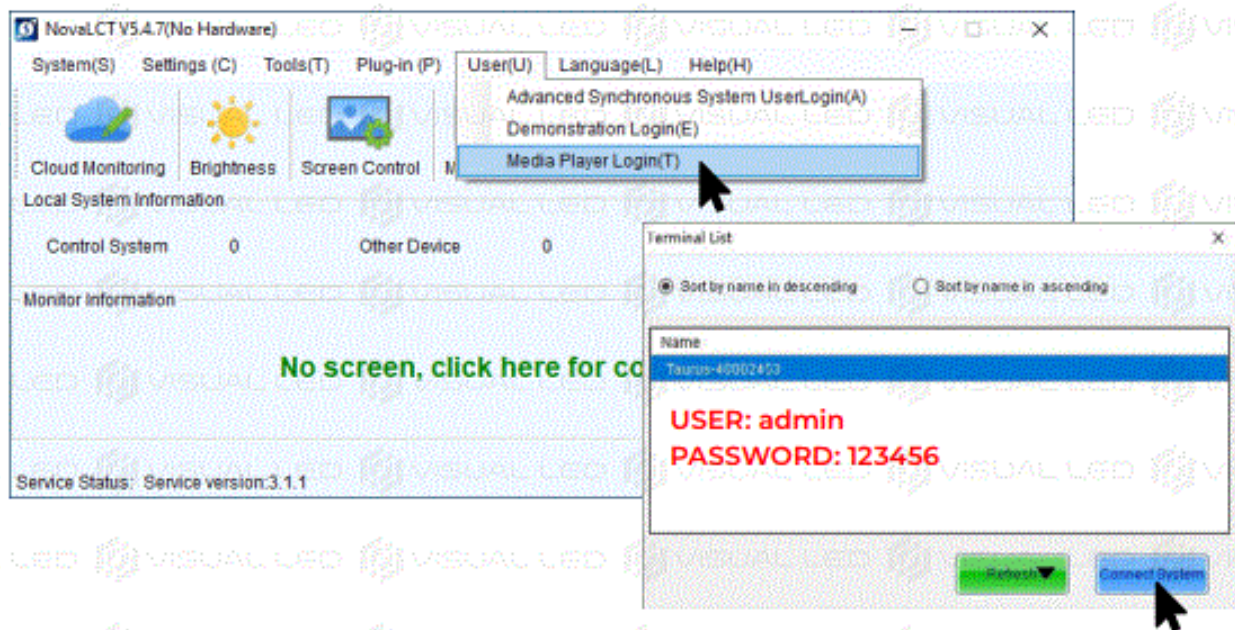
### LOGIN TO THE CONTENT PLAYER

- RUN NOVALCT AND ALLOW ANY NETWORK ACCESS PERMISSION.





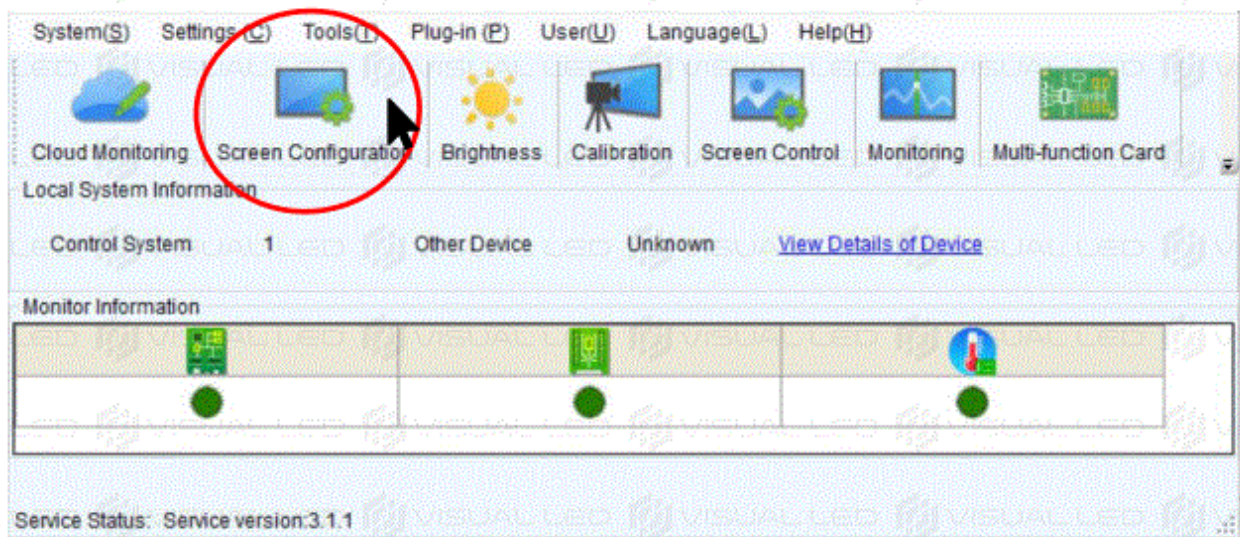
CLICK ON THE "USER" MENU AND SELECT "MEDIA PLAYER LOGIN".



## WARNING

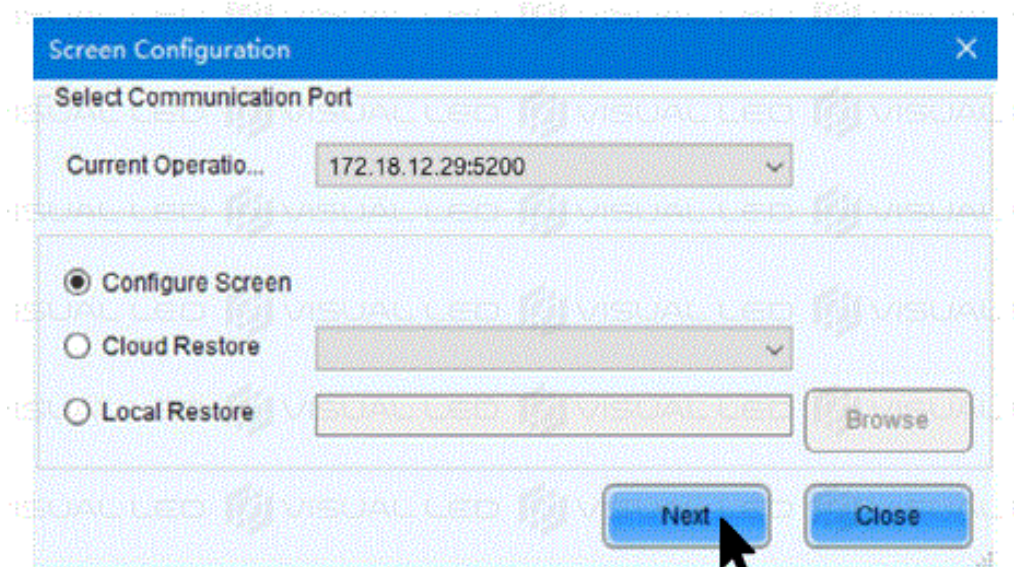
- YOUR PLAYER WILL APPEAR IN THE TERMINALS LIST AS TAURUS-XXXXXXXXXX. SELECT THE PLAYER AND CLICK ON "CONNECT SYSTEM" USING THESE CREDENTIALS: ADMIN / 123456
- IF THE PLAYER DOES NOT APPEAR, PLEASE NOTE THAT IT MAY TAKE 1 OR 2 MINUTES FOR THE PLAYER TO BE DETECTABLE AFTER IT IS TURNED ON. IF IT STILL DOES NOT APPEAR, CHECK ALL CONNECTIONS, UNPLUG THE PLAYER AND PLUG IT AGAIN. WAIT 2 MINUTES AND CLICK "REFRESH" TO FORCE DETECTION
- IF THE LOGIN TO THE PLAYER IS CORRECT THE SOFTWARE WILL SHOW NEW BUTTONS LOOKING LIKE THE IMAGE BELOW.





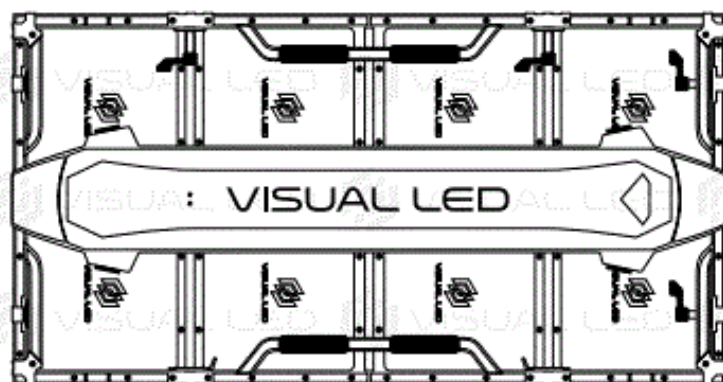
## ACCESS TO SCREEN CONFIGURATION

- CLICK ON "SCREEN CONFIGURATION" AND SELECT THE COMMUNICATION PORT CORRESPONDING TO YOUR PLAYER AND THEN CLICK ON NEXT



## RECEIVING CARD CONFIGURATION

### IDENTIFY THE POSITION OF YOUR LED CABINETS

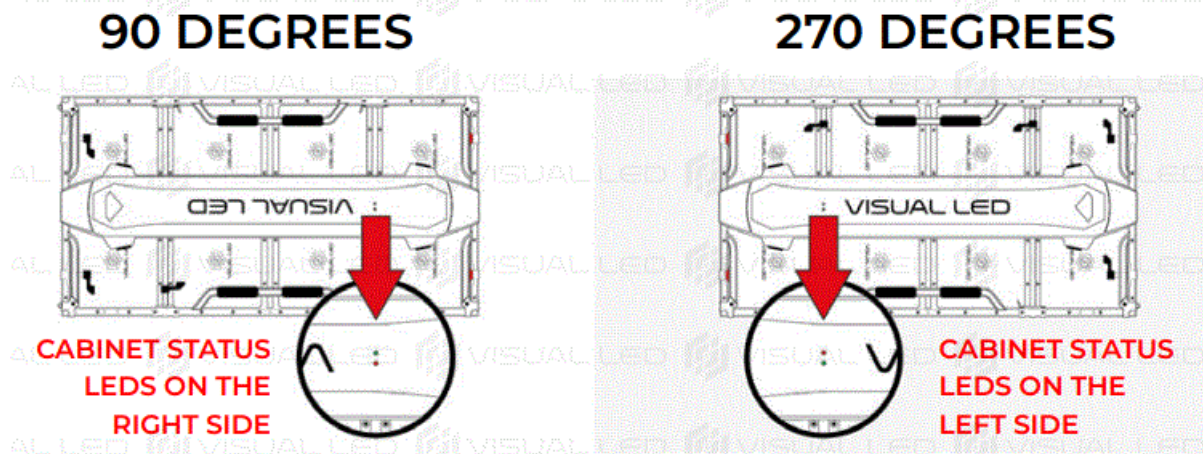


HORIZONTAL CABINET



- IF YOUR DISPLAY IS ASSEMBLED WITH HORIZONTAL CABINETS, YOU MUST REQUEST YOUR CONFIGURATION FILE BY EMAIL AT [SOPORTE@VISUALLED.COM](mailto:SOPORTE@VISUALLED.COM) AND FOLLOW THE STEPS IN SECTION 4.2

YOU WILL HAVE TO CHOOSE ONE OF THE 2 FILES DEPENDING ON HOW YOU HAVE MOUNTED YOUR CABINETS HORIZONTALLY:

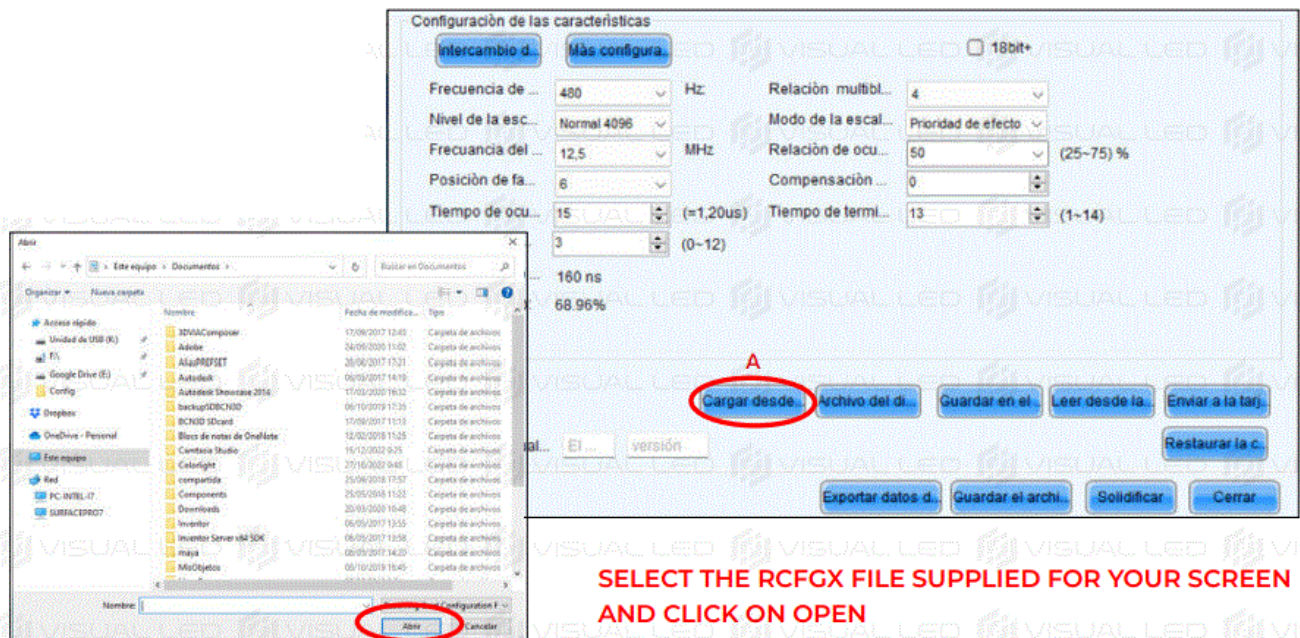


THE DEGREES OF ROTATION OF THE CABINETS ARE ALWAYS COUNTED CLOCKWISE AND FROM A FRONT VIEW OF THE DISPLAY

#### LOADING THE RECEIVING CARD CONFIGURATION FILE FOR HORIZONTAL CABINETS

USE THE FILE PROVIDED BY VISUAL LED ACCORDING TO THE ROTATION (90° / 270°) OF THE CABINETS ON YOUR DISPLAY.

- A: AT THE BOTTOM OF THE WINDOW, CLICK ON THE “LOAD FROM FILE” BUTTON. A WINDOW TO OPEN AN RCFGX FILE WILL APPEAR.



SELECT THE RCFGX FILE SUPPLIED FOR YOUR SCREEN AND CLICK ON OPEN

AFTER LOADING THE FILE, THE RESOLUTION IN PIXELS OF A CABINET WILL BE UPDATED IN THE WIDTH AND HEIGHT SECTION. IT IS INDIFFERENT WHETHER IT APPEARS AS “REGULAR” OR “IRREGULAR”.





## SENDING THE NEW CONFIGURATION TO THE SCREEN

- B: AT THE BOTTOM, CLICK ON THE “SEND TO RECEIVING CARD” BUTTON. THE “SEND PARAMETERS” WINDOW WILL APPEAR

Configuración de las características

☐ 18bit+

Frecuencia de ...	480	Hz	Relación multibl...	4	
Nivel de la esc...	Normal 4096		Modo de la escal...	Prioridad de efecto	
Frecuencia del ...	12.5	MHz	Relación de ocu...	50	(25~75) %
Posición de fa...	6		Compensación ...	0	
Tiempo de ocu...	15	(=1,20us)	Tiempo de termi...	13	(1~14)
Tiempo de ca...	3	(0~12)			
Ancho mínimo ...	160 ns				
Efecto de brillo:	68.96%				

Información actual...

- C: SELECT THE CHECKBOX “RESET STARTING COORDINATE...” AND CLICK ON SEND. WAIT UNTIL YOU RECEIVE A CONFIRMATION MESSAGE.

Send Parameters to Receiving Card

☒ All Recei... ☒ Reset the Starting Coordinate ...

☐ Specify Receiving Card

- D: CLICK ON SAVE, AND WAIT FOR ANOTHER CONFIRMATION MESSAGE.

Posición de fa... 6 Compensación ... 0

Tiempo de ocu... 15 (=1,20us) Tiempo de termi... 13 (1~14)

Tiempo de ca... 3 (0~12)

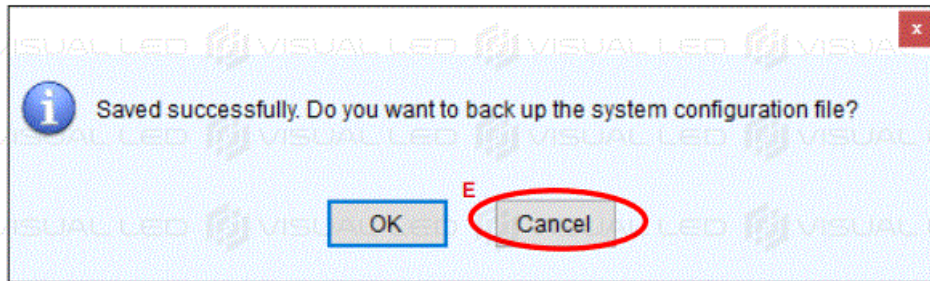
Ancho mínimo ... 160 ns

Efecto de brillo: 68.96%

Información actual...

- E: CANCEL THE BACKUP





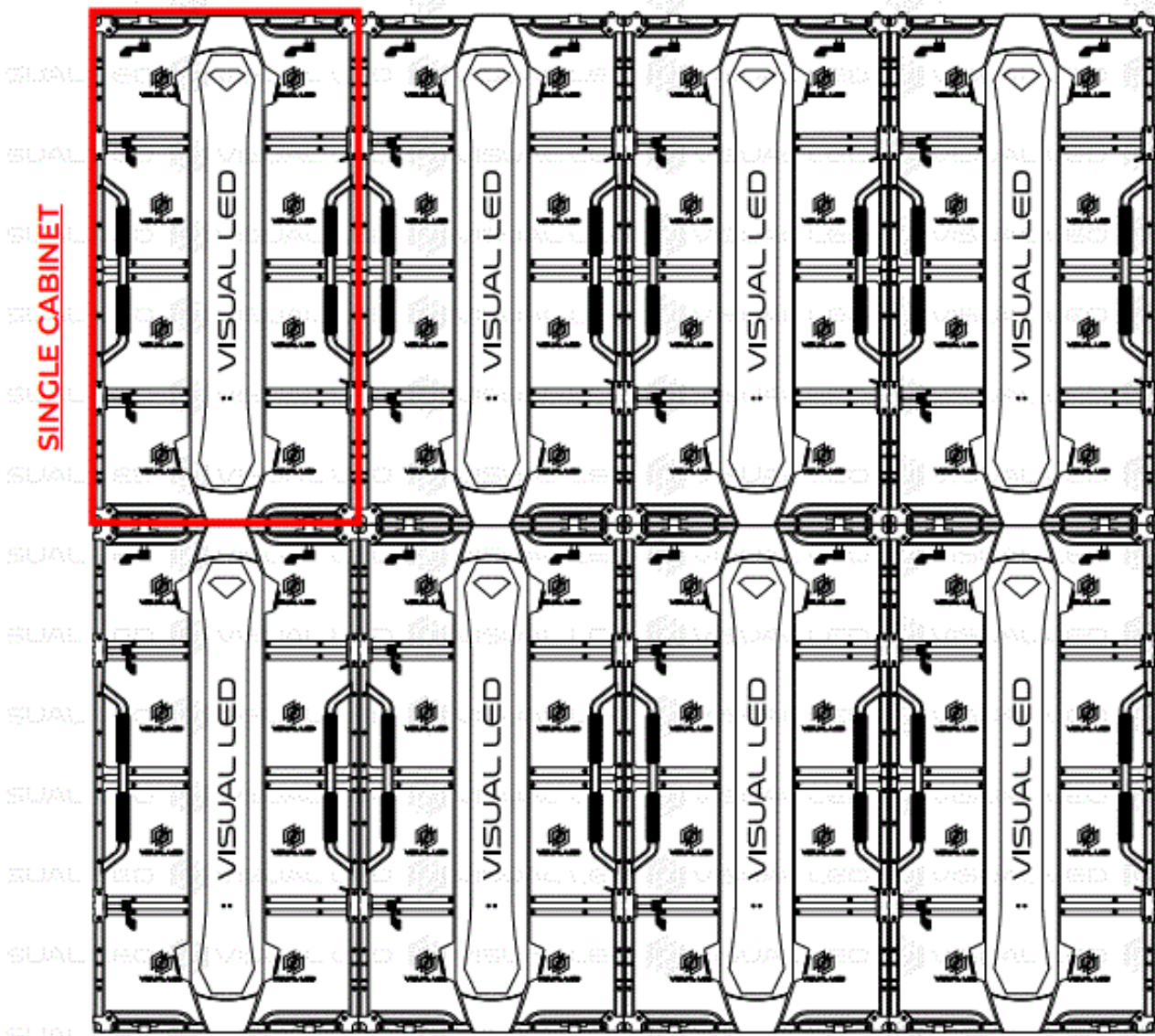
## SCREEN CONNECTION

### SCREEN CONNECTION CONFIGURATION

- EXAMPLE OF CONNECTION SETTINGS (CONNECTION TAB OF THE DISPLAY...)

IN THIS SECTION WE CONFIGURE THE POSITION OF THE CABINETS AND THE THE DATA WIRING OF THE SCREEN.

AS AN EXAMPLE WE ARE GOING TO CONFIGURE A SCREEN WITH 8 CABINETS POSITIONED IN 2 ROWS OF 4.



- BASED ON THIS EXAMPLE YOU CAN CONFIGURE THE NUMBER OF CABINETS CORRESPONDING TO THE SIZE OF YOUR SCREEN.

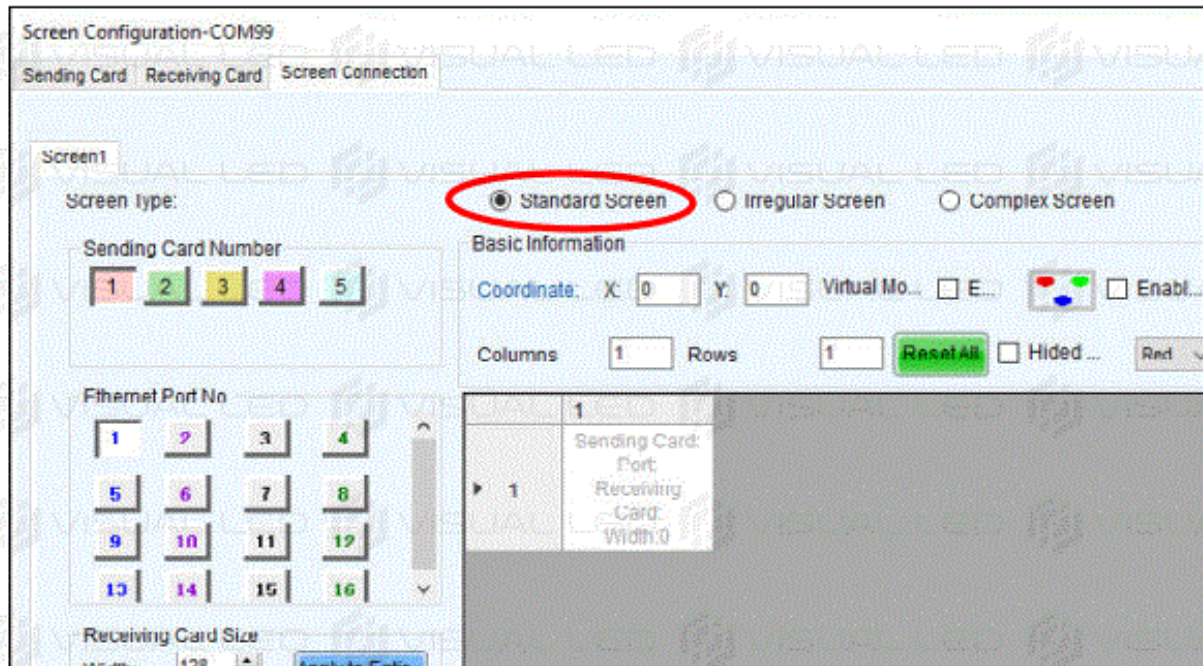


## SETTING THE NUMBER OF CABINETS FOR YOUR DISPLAY

- IN THE “SCREEN CONNECTION” TAB, CLICK ON THE “CONFIGURE” BUTTON IN THE UPPER RIGHT CORNER.



- A: SELECT THE “STANDARD SCREEN” OPTION AT THE TOP OF THE SCREEN.



- B: ON RECEIVING CARD SIZE, CHECK THAT THE WIDTH AND HEIGHT NUMBERS ARE THE SAME THAT APPEAR ON THE SENDING CARD TAB: CABINET INFORMATION. IF THEY ARE NOT TYPE IN THE PIXEL WIDTH AND HEIGHT TO MATCH IT.  
IN CASE THEY DO NOT MATCH, MODIFY THESE NUMBERS AND CLICK ON THE “APPLY TO ROW” AND “APPLY TO COLUMN” BUTTONS.

Configuración de la pantalla de visualización-COM99

Tarjeta de envío Tarjeta receptora Conexión de la pantalla

Pantalla1

Tipo de la pantalla: ☒ Pantalla de visualización

Número de serie de la tarjeta de envío

1	2	3	4	5
---	---	---	---	---

Número de puerto de red

1	2	3	4
5	6	7	8
9	10	11	12
13	14	15	16

**B**

Medida de la tarjeta receptora

Ancho: 128

Altura: 256

☐ Posición:

Conexión Rápida

2	W	S	W
S	W	2	W

Información del cuerpo de caja

☒ Regular

Ancho(número): 128

Altura(número): 256

Dirección de ...: Desde derecho

- C: GO TO THE "COLUMNS" BOX AND TYPE IN THE NUMBER OF COLUMNS CORRESPONDING TO HOW YOUR SCREEN IS SET UP. ACCORDING TO OUR EXAMPLE WE WILL ENTER 4.



Screen Configuration-COM99

Sending Card Receiving Card Screen Connection

Screen1

Screen Type: ☒ Standard Screen ☐ Irregular Screen ☐ Complex Screen

Sending Card Number: 1 2 3 4 5

Ethernet Port No.: 1 2 3 4 5 6 7 8 9 10 11 12

Basic Information

Coordinate: X: 0 Y: 0 Virtual Mo... ☐ F ☐ Fnabl

Columns: 1 Rows: 1  ☐ Hided ... Red

1 Sending Card: Port Receiving Card: Width 0

- D: GO TO THE "ROWS" BOX AND TYPE IN THE NUMBER OF ROWS CORRESPONDING TO HOW YOUR SCREEN IS SET UP. ACCORDING TO OUR EXAMPLE WE WILL ENTER 2.

Screen Configuration-COM99

Sending Card Receiving Card Screen Connection

Screen1

Screen Type: ☒ Standard Screen ☐ Irregular Screen ☐ Complex Screen

Sending Card Number: 1 2 3 4 5

Ethernet Port No.: 1 2 3 4 5 6 7 8 9 10 11 12

Basic Information

Coordinate: X: 0 Y: 0 Virtual Mo... ☐ F ☐ Fnabl

Columns: 1 Rows: 2  ☐ Hided ... Red

1 Sending Card: Port Receiving Card: Width 0

AFTER ENTERING THE NUMBERS OF COLUMNS AND ROWS, WHITE RECTANGLES WILL APPEAR REPRESENTING THE CABINETS THAT MAKE UP OUR DISPLAY. ADAPT THE NUMBER OF ROWS AND COLUMNS TO FIT YOUR OWN LED DISPLAY.



Tarjeta de envío Tarjeta receptora Conexión de la pantalla de visualización

Pantalla1

Tipo de la pan... ☒ Pantalla de visualiza... ☐ Pantalla de visualización complicada

Número de serie de la tarjeta de envío

1 2 3 4 5

Información básica

Coordenadas: X: 0 Y: 0 Modo virt... ☐ M... ☐ Habilit...

Número de... 4 Número de... 2 Volver a c... ☐ Ocultar ... Rojo ☐ ★

Número de puerto de red

1 2 3 4

5 6 7 8

9 10 11 12

13 14 15 16

Medida de la tarjeta receptora

Ancho: 128 Aplicar a la fi...

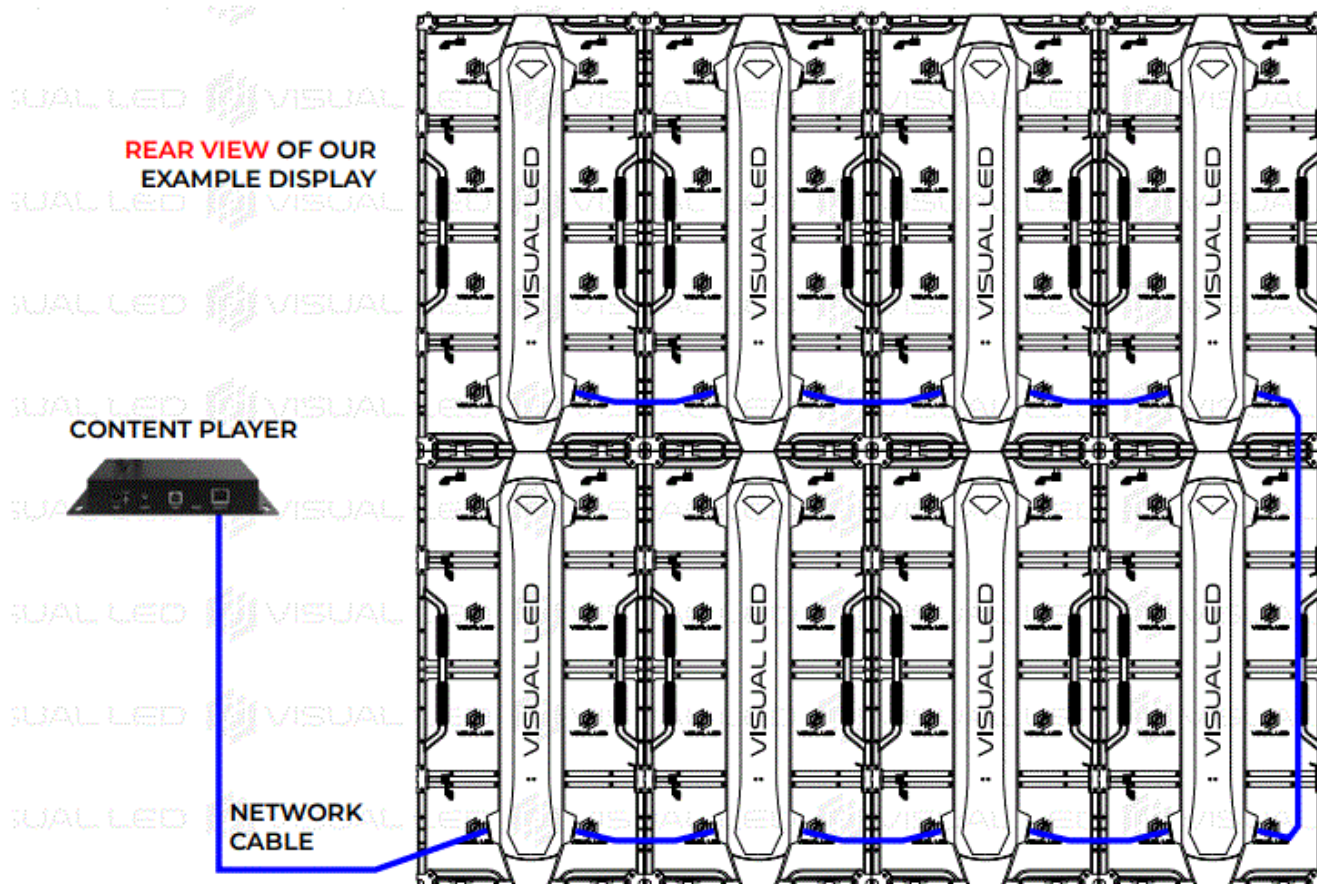
Altura: 256 Aplicar a al...

☐ Posición La actual red de b...

	1	2	3	4
1				
2				

## CONFIGURE DATA WIRING CONNECTIONS

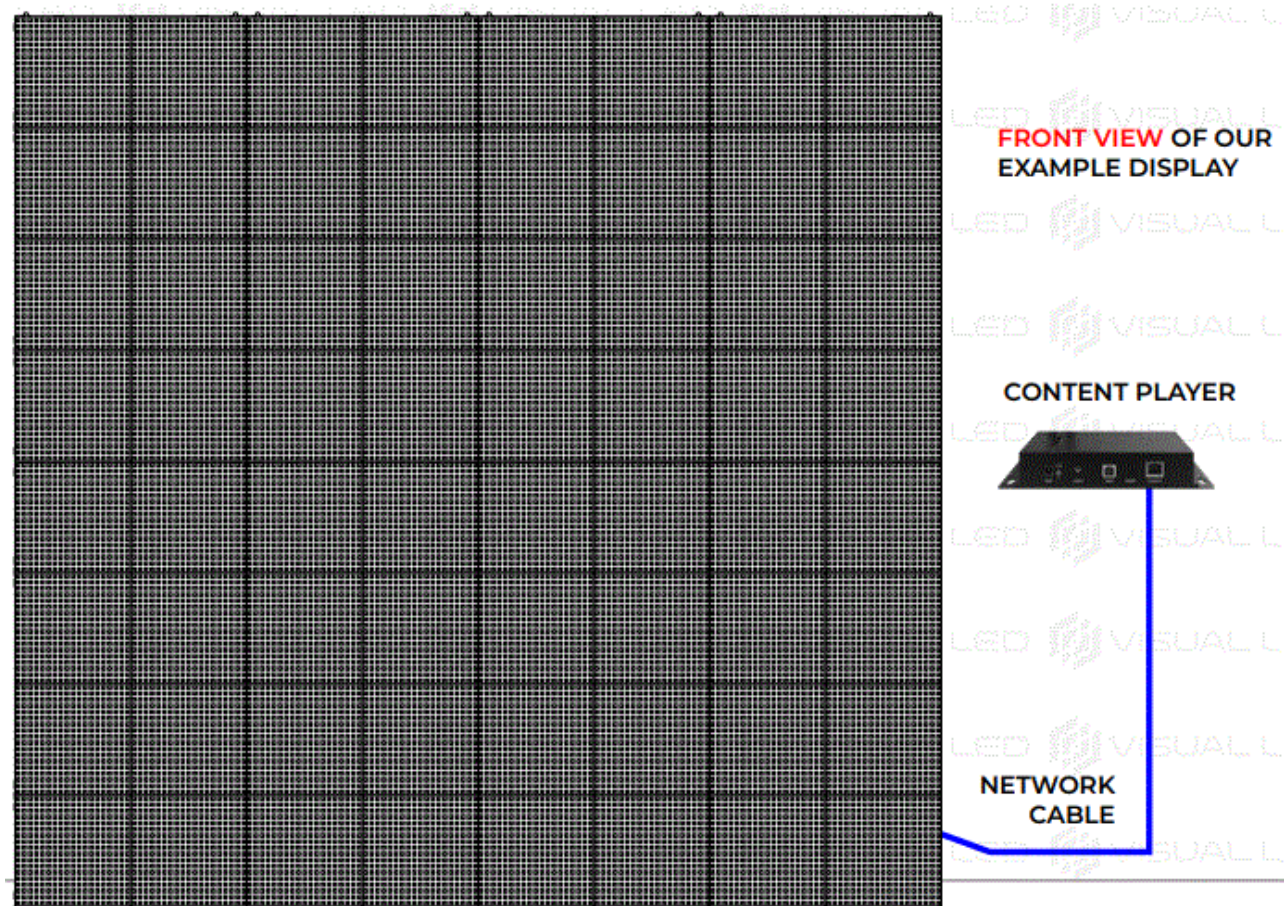
- BEFORE WE BEGIN, LET'S TAKE A LOOK AT THE BACK VIEW OF THE DATA WIRING OF OUR EXAMPLE DISPLAY. THE DATA ENTERS THROUGH THE LOWER LEFT CABINET.



- IMPORTANT:** IN NOVALCT WE WILL SHOW THE DISPLAY DATA WIRING FROM A FRONT VIEW.



THEREFORE, THE DATA WIRING ENTERS FROM THE LOWER RIGHT FRAME.



- NOW WE WILL SET HOW THE SCREEN IS WIRED. WE WILL WORK WITH THE MOUSE BY CLICKING ON THE WHITE FRAMES TO SET THE PATH OF THE SCREEN DATA WIRES.

Columns	4	Rows	2	Reset All	<input type="checkbox"/> Hided ...	Red
	1	2	3	4		
1	Sending Card: Port: Receiving Card: Width:0	Sending Card: Port: Receiving Card: Width:0	Sending Card: Port: Receiving Card: Width:0	Sending Card: Port: Receiving Card: Width:0		
2	Sending Card: Port: Receiving Card: Width:0	Sending Card: Port: Receiving Card: Width:0	Sending Card: Port: Receiving Card: Width:0	Sending Card: Port: Receiving Card: Width:0		

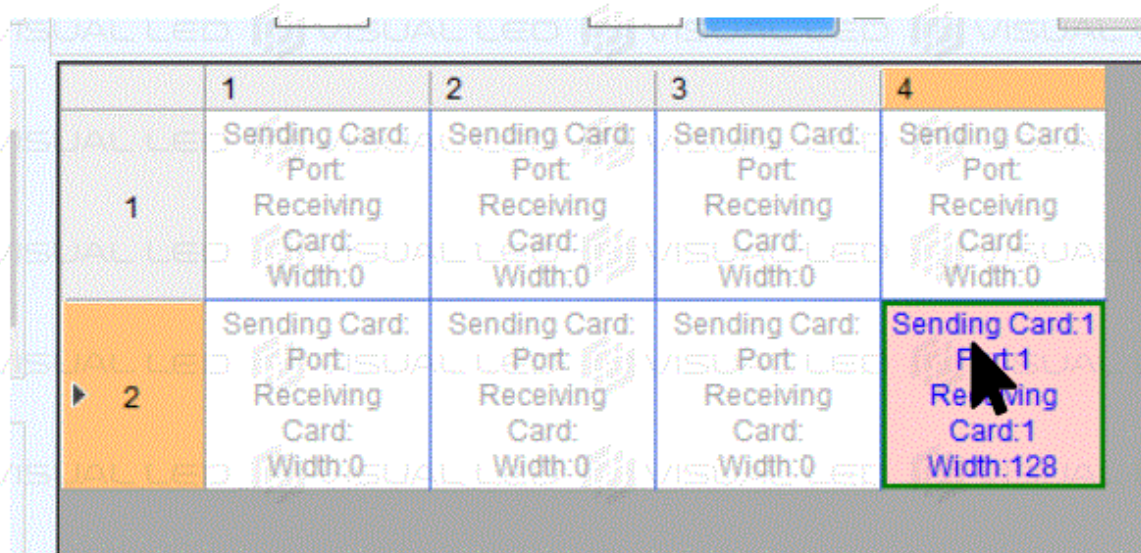
**IMPORTANT: THIS CONFIGURATION SCREEN REPRESENTS THE CABINETS FROM A FRONT VIEW.**

IF AT ANY TIME DURING THIS PROCESS WE MAKE A MISTAKE, WE CAN UNDO THE WIRING ORDER BY CLICKING ON THE FRAMES WITH THE RIGHT MOUSE BUTTON. THERE IS ALSO A "RESET" BUTTON TO RESTART THE WIRING.

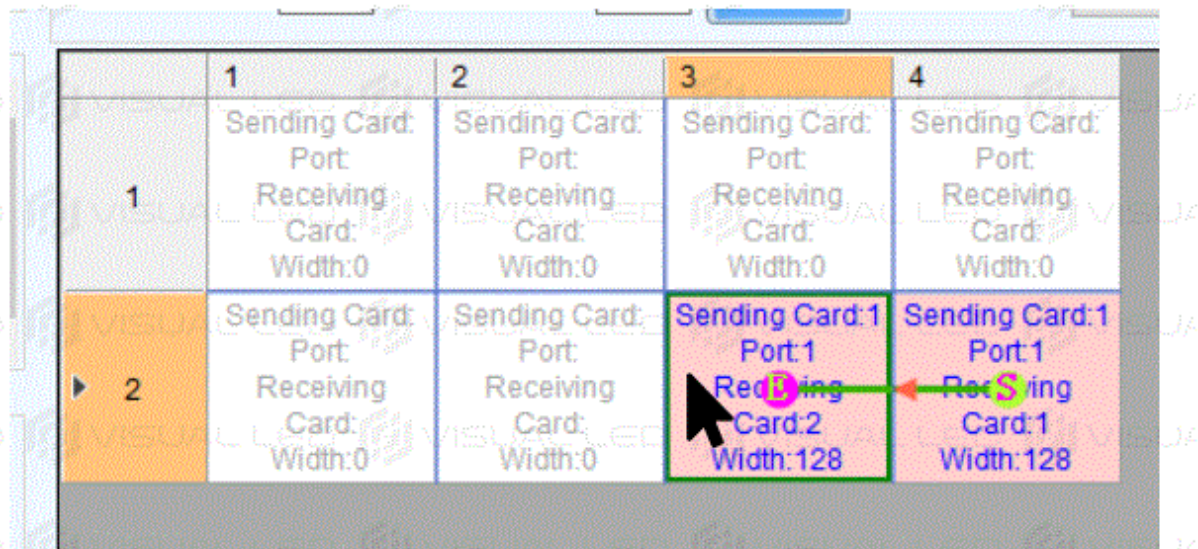
**WARNING**

WE MUST ALWAYS START BY CLICKING ON THE CABINET WHERE THE DATA ENTERS THE SCREEN FROM A FRONT VIEW.  
IN OUR EXAMPLE IS THE LOWER RIGHT OF THE DIAGRAM. IT WILL LIGHT UP IN PINK.





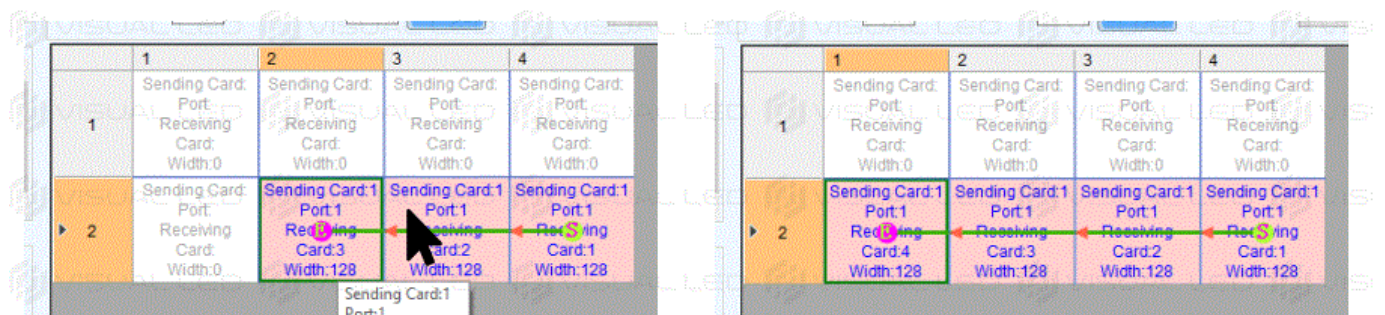
THEN WE CLICK ON THE NEXT CABINET OF THE SAME ROW FOLLOWING THE PATH OF THE DATA CABLES ON THE SCREEN



THIS WILL ALSO LIGHT UP PINK AND A LETTER E (END) WILL APPEAR INDICATING THAT IT IS THE LAST CABINET IN THE CIRCUIT AT THIS TIME. A LETTER S (START) WILL APPEAR ON THE FIRST CABINET INDICATING THAT IT IS THE FIRST CABINET IN THE CIRCUIT.

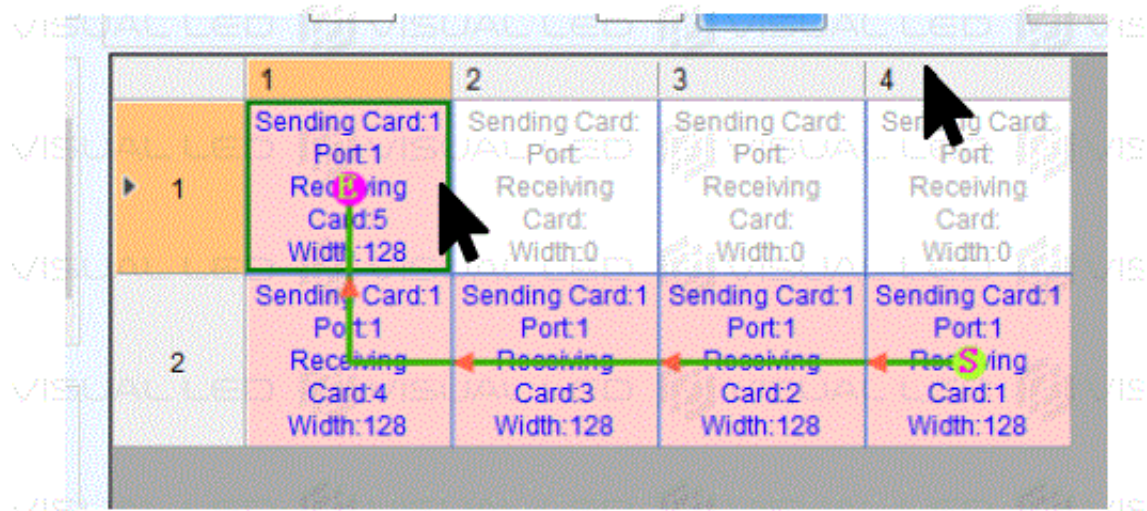
### WARNING

NOTE THAT IN A HORIZONTALLY ASSEMBLED DISPLAY THE WIRING CIRCUIT WILL BE DIFFERENT (IT WILL PROBABLY GO FROM BOTTOM TO TOP IN COLUMNS). WE CLICK IN ORDER ON THE CABINETS OF THE LOWER ROW FOLLOWING THE WIRING.

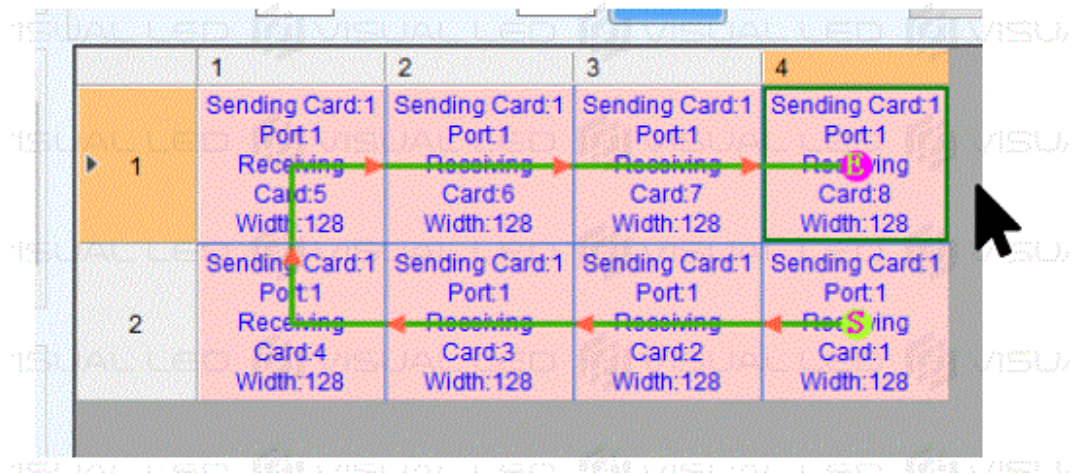
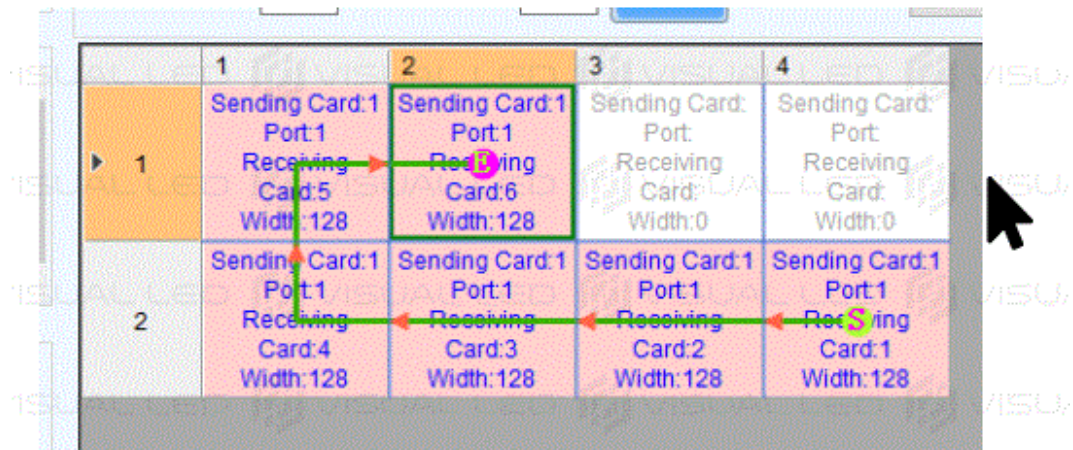


- WHEN WE REACH THE END OF THE ROW WE CLICK ON THE TOP CABINET FOLLOWING THE PATH OF THE NETWORK CABLES ON THE SCREEN.



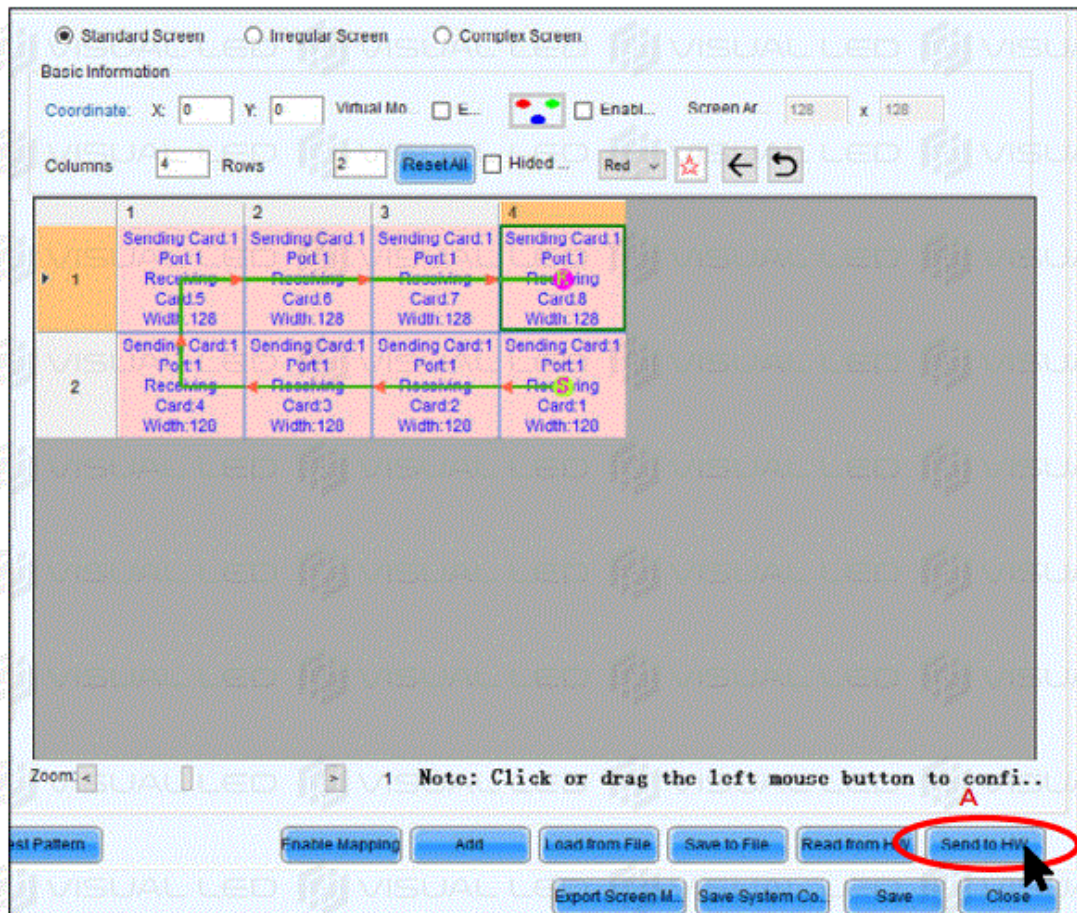


- CONTINUE CLICKING IN ORDER ON THE CABINETS UNTIL THE TOP ROW IS COMPLETED.

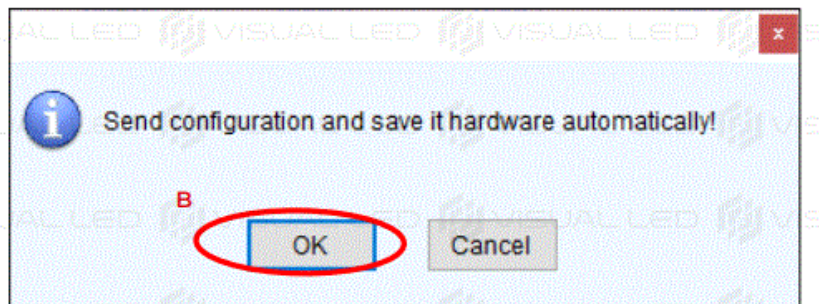


**SENDING THE CONFIGURATION TO THE SCREEN**

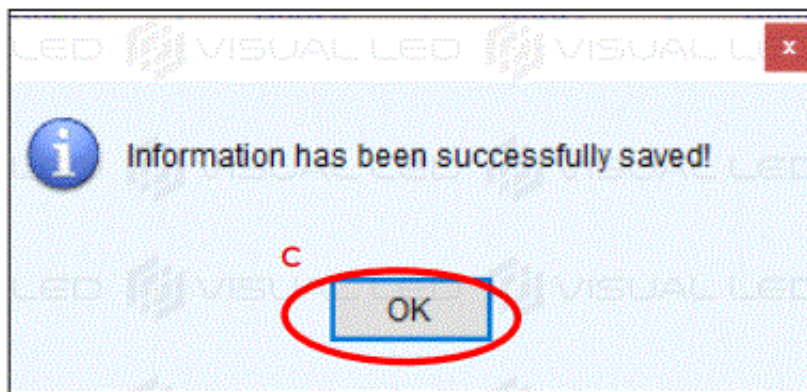




- AFTER DRAWING THE DATA WIRING ON THE CABINETS, WE WILL SEND THIS CONFIGURATION TO THE SCREEN.
- A: CLICK ON THE “SEND TO HW” BUTTON.

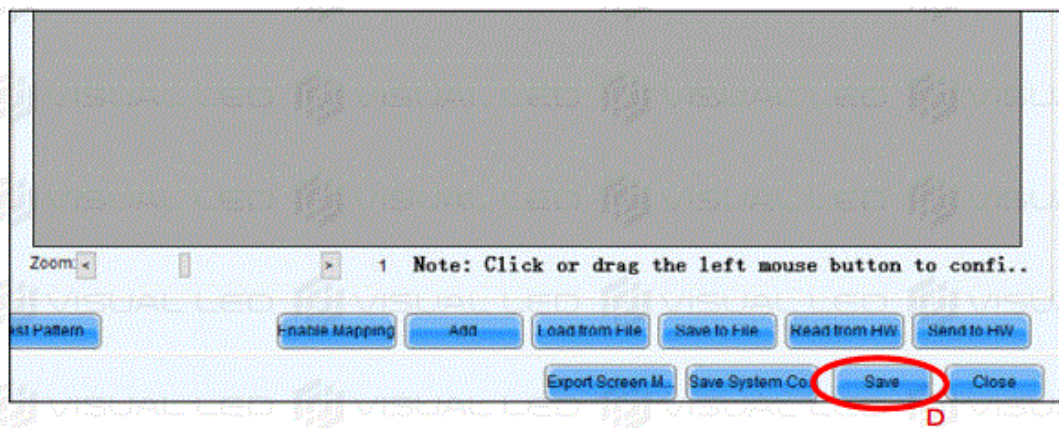


- B: A CONFIRMATION WINDOW WILL APPEAR: CLICK OK



- C: WHEN THE CONNECTIONS MAP IS SENT, A CONFIRMATION MESSAGE WILL POP UP. CLICK OK





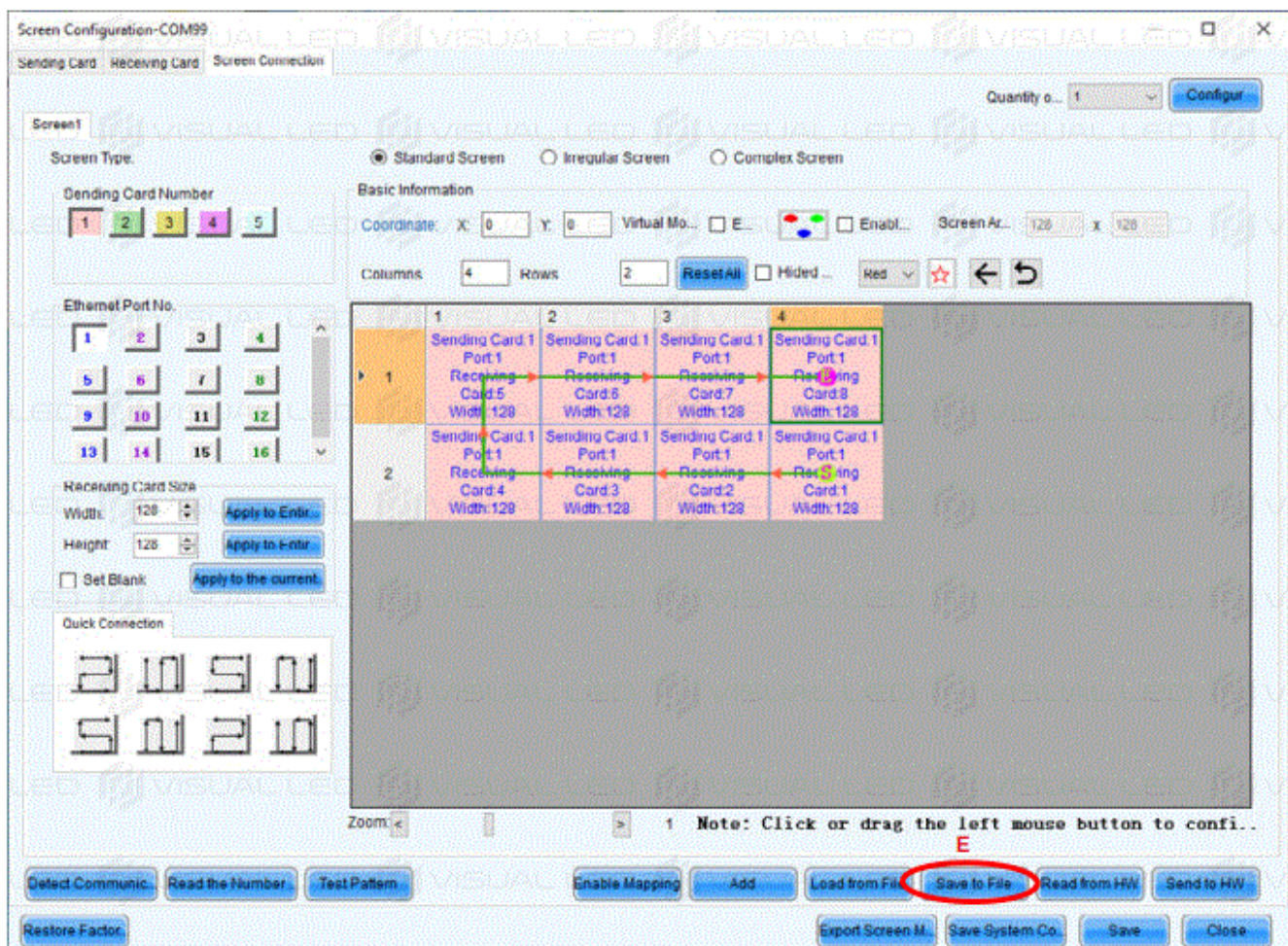
- D: CLICK ON THE “SAVE” BUTTON AND WAIT FOR ANOTHER CONFIRMATION MESSAGE ACCEPT THE CREATION OF A CONFIGURATION BACKUP

### WARNING

AFTER THIS STEP YOU SHOULD BE ABLE TO CORRECTLY VIEW THE DEFAULT CONTENTS LOADED IN THE NOVASTAR PLAYER.

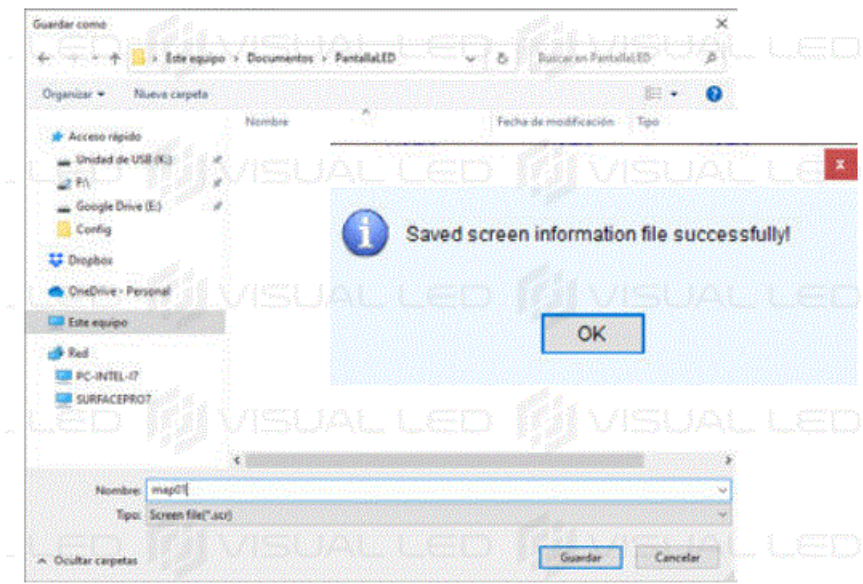
### BACKUP FILE OF THE SCREEN CONNECTION CONFIGURATION

- FINALLY, WE WILL MANUALLY SAVE A BACKUP FILE OF THE DATA WIRING CONFIGURATION



- E: CLICK ON THE “SAVE TO FILE” BUTTON. A WINDOW TO SAVE THE WIRING BACKUP FILE WITH MAP

EXTENSION WILL APPEAR. SAVE IT IN THE SAME FOLDER AS YOUR RECEIVING CARD FILE



- YOU HAVE NOW SUCCESSFULLY CONFIGURED YOUR LED DISPLAY. YOU CAN CLOSE THIS CONFIGURATION WINDOW AND THE NOVALCT PROGRAM, THIS SOFTWARE IS ONLY USED FOR THE CONFIGURATION OF THE DISPLAY. NOT ALL FUNCTIONS OF THIS SOFTWARE ARE COMPATIBLE WITH ALL DISPLAYS. AFTER A CORRECT CONFIGURATION YOU CAN UNINSTALL IT FROM YOUR SYSTEM.

**Documents / Resources**

	<p><a href="#">Nova LCT Windows PC Screen Configuration</a> [pdf] User Guide</p> <p>LCT Windows PC Screen Configuration, LCT, Windows PC Screen Configuration, PC Screen C onfiguration, Screen Configuration</p>
--	---

**References**

- [Global leading LED display control solution](#)